

FREE!

GREAT FALLS, MONTANA

Online Version



# WE ARE LOCAL



Issue : 47

## SOCIALBYTES

February 19, 2025

**Brett Harris Insurance Agency**

**FARMERS INSURANCE**

**Brett Harris**  
Agent

300 15th St S, STE 9  
Great Falls, MT 59405  
Office 406.452.6695  
Fax 406-452-3488  
bharris5@farmersagent.com  
MT Producer LIC 3001670132

### Row the Boat Together

In business, just like in life, you're either rowing together—or you're drifting apart. R.J. Fleck's "Row the Boat" philosophy, made famous in the sports world, applies perfectly to small businesses and local teams right here in Great Falls.

At its core, "Row the Boat" is about mindset, teamwork, and resilience. The oar represents the energy you bring every day. The boat is the company, carrying everyone toward the goal. The compass? That's the vision guiding the way. When everyone rows in sync—with shared purpose and relentless effort—businesses don't just survive, they thrive.

Think about it: A local café succeeds not just because of great coffee, but because the baristas, managers, and owners are all pulling in the same direction, committed to service and quality. A family-owned hardware store competes with big chains because its team believes in what they do, works hard, and supports each other.

Challenges will come—economic shifts, competition, unexpected hurdles—but a team that rows together doesn't panic. They adapt, adjust, and keep moving forward.

So, ask yourself: Is your team rowing in unison, or are some letting go of their oars? Building a "Row the Boat" culture means setting clear goals, encouraging accountability, and fostering a never-quit attitude.

Great Falls businesses, it's time to grab those oars, lock in your vision, and row—together—toward success.

ADVERTISE IN SOCIALBYTES  
406.899.0404

**The Institute of Empowered Health**

**Tasha Pepos, RDN, LN**  
Owner, Holistic Nutritionist

#2 5th St. N, Suite 200  
Great Falls, MT 59401  
(406) 898 - 4223  
www.instituteofempoweredhealth.com

**#MadeEasy**

**Battle Born**  
Financial Advisor & Health Insurance Broker

- \*Health Insurance
- \*Medicare
- \*Financial Planning

406-602-8800  
1201 10th Ave S, Ste 105  
Great Falls, MT 59405

**SUNMED™**  
Your CBD Store

All Natural USDA Organic CBD  
For all YOURS and your PETS Needs  
Buy one 1800mg Strawberry Lime Water Soluble  
GET 50% OFF 2k Topical Cream  
1520 3RD ST NW Tel # 406-899-0853

*Brain Teaser*

I'm tall when I'm young, and I'm short when I'm old.  
What am I?

**GF**  
**G**

Great Falls Gazette  
I Like it Local

1601 2nd Ave N  
Great Falls, Mt 59401  
(406) 604-8929  
info@gfgazette.com  
https://gfgazette.com

**Why do mathematicians hate the U.S.? Because it's indivisible.**

**I think circles are pointless.**

**I used to think I was indecisive, but now I'm not sure.**

**Phillip Mahoney**  
Flooring Specialist

**PIERCE FLOORING WHOLESALE DIRECT**

1204 - 7th Street South • PO Box 3429  
Great Falls, MT 59403-3429  
www.pierceflooringwholesale.com

Cell (406) 868-7433  
(406) 727-3832 x8009  
Toll Free 800-893-7975  
pmahoney@pierce.biz

**Onge's Fashions**  
Specializing in Missy and Plus Sizes

WE ARE UNIQUE BUT NOT A BOUTIQUE

600 CENTRAL PLAZA, DOWNTOWN  
406-952-4643 M-F 9:30 - 5:30 | SAT 9:30 - 4:00 | SUN 1:00-4:00

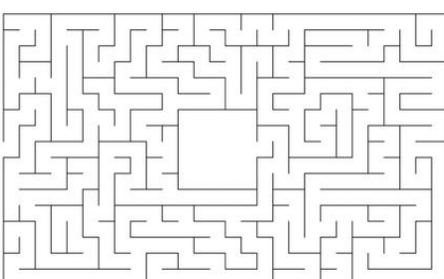
**Falls Print Works**

406-315-1653  
fallsprintworksgmail.com

**Looking for work?**

**NOW HIRING**

Join us, Wednesdays, for C.A.B. Several C.A.B. members are now hiring. Discover new career opportunities!



*The Conundrum Corner:*  
by Doug Mercado

406.551.6309

ESTD 2024

**3 SUNS CLEANING SERVICE**  
RELIABLE & AFFORDABLE SERVICE GUARANTEED

3Suncleaning.com

Residential, Janitorial, Deep Clean  
Vacation Home, Move In/Out

406-792-5602  
3sunsmt@gmail.com

**Blessed Bee**  
MASSAGE THERAPY

Tracy "Tess" Johnson LMT  
(406) 231-6122  
1601 2nd Ave N, Suite 616  
Great Falls, MT 59401

- ACROSS**
- To propel a boat using oars
  - The ability to guide and inspire others
  - Forward movement or progress
  - Achieving a desired result or goal
  - The process of improving or expanding
- DOWN**
- The ability to recover from challenges
  - A clear idea of future goals
  - A tool used for rowing a boat
  - Working together to achieve a common goal
  - A small vessel used for traveling on water

x	+	+	+	-	+	1228			
x	-	+	x	-	+	1280			
-	x	-	-	-	+	519			
-	+	+	-	+	-	-1991			
+	-	-	-	x	+	520			
+	+	20	-	+	x	+	+	-42	
-	+	-	-	-	+	-	-	-	-
-	-	-	+	+	+	+	-	-	-
-	-	-	-	38	x	+	23	+	-1279
1158	-39	18	534	1315	183	-32			

Fill in the missing numbers  
The missing values are the whole numbers between 1 and 49.  
Each number is only used once.  
Each row is a math equation.  
Each column is a math equation.  
Remember that multiplication and division are performed before addition and subtraction.



# OPEN DOOR

## wellness center

Office Hours: 8 AM to 5 PM M - F  
2022 Central Ave. Great Falls, MT 59401  
Phone: 406.781.4414 - Fax: 406.205.2358



GREAT FOOD, SERVICE & ATMOSPHERE  
Overlooking the City of Great Falls

WEDDINGS | CONVENTIONS | PROMS  
ANNIVERSARIES | BUSINESS MEETINGS  
HOLIDAY PARTIES | REUNIONS | MORE!

Third Floor of GTF Airport (406) 564-9358 greatfallseventcenter.com

TREASURE STATE PAYMENTS

## PAYMENT SOLUTIONS

- CREDIT CARD / DEBIT CARD PROCESSING
- MERCHANT SERVICES

406.231.1687

SAVING YOU MONEY AND FUELING YOUR BUSINESS



Issue : 47

# FREE! SOCIALBYTES - WE ARE LOCAL

February 19, 2025

## Great Falls Auto Repair



We love people who love their cars

**James Gowers**  
Owner/CEO

1121 25th Ave NE, Unit #4  
Black Eagle, MT 59414  
Phone: 406-727-0021  
Cell: 406-231-1022  
E-mail: shop@greatfallsautorepair.com

www.greatfallsautorepair.com

# Law411

Lawyer, meet Client.  
Client, meet Lawyer.



Upload your case today at LAW411.com

## Silhouette BRIDAL STUDIO

Bridal Gowns & Accessories



406.564.6287

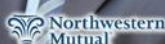
silhouettebridalstudio.com

809 9th Street S. Great Falls, MT 59405

## DOUG J. MERCADO

Financial Advisor

406.551.6309  
970.231.4659  
Great Falls, MT  
DouglasMercado.nm.com  
LIC4283608 (CA)



## Southern Peach Cobbler

### Ingredients

- For the peaches:
  - 6-7 fresh peaches, peeled and sliced (or 2 (15 oz) cans of peaches, drained)
  - ¾ cup granulated sugar
  - 1 teaspoon cinnamon
  - ½ teaspoon nutmeg
  - 1 teaspoon vanilla extract
  - 1 tablespoon lemon juice
  - 1 tablespoon cornstarch (for thickening, optional)
- For the cobbler batter:
  - 1 cup all-purpose flour
  - 1 cup granulated sugar
  - 1 teaspoon baking powder
  - ¼ teaspoon salt
  - ¾ cup milk
  - ½ cup (1 stick) unsalted butter, melted

### Instructions

- Preheat your oven to 375°F (190°C).
- In a mixing bowl, toss the sliced peaches with sugar, cinnamon, nutmeg, vanilla, lemon juice, and cornstarch (if using).
- Let the peaches sit while you prepare the batter.
- Place the butter in a 9x13-inch baking dish.
- Put the dish in the oven for a couple of minutes to melt the butter, then remove it.
- In a separate bowl, whisk together the flour, sugar, baking powder, and salt.
- Gradually stir in the milk until smooth.
- Pour the batter evenly over the melted butter (don't stir!).
- Spoon the peach mixture evenly over the batter (again, do not stir—this helps create that classic cobbler texture).
- Bake for 40-45 minutes, or until golden brown and bubbling.
- Let cool slightly before serving.
- Optional: Serve warm with vanilla ice cream or whipped cream for the ultimate Southern treat!

## Wolthoff Media

Business and Networking Coach



- Media Strategies
- Business Growth
- Business Start-up
- Next Step Leadership
- Video Production
- Commercials
- Interviews
- On-Line courses



Schedule a meeting

406.899.0404  
jayson@jaysonwolthoff.com  
https://jaysonwolthoff.com

## STARadio

STARadio, Great Falls, MT  
1300 Central Ave West  
Great Falls, MT 59404  
P: (406)761-2800

STARadio: Your Voice, Your Community,  
Your Station – Proudly Serving Great Falls!

STARadio is proud to partner with We Are Local to bring even greater value to our amazing Great Falls community. Together, we're amplifying local voices, supporting businesses, and connecting neighbors through meaningful stories and opportunities. At STARadio, we believe in keeping it local—because when we invest in each other, our community shines brighter!

### Word Find

M	W	A	R	W	O	J	D	W	R	N	U	M	W	H
S	U	C	C	E	S	S	M	O	D	Z	O	T	U	S
L	O	V	U	G	Q	Y	W	N	M	Q	L	G	F	P
M	E	G	K	S	R	N	V	O	I	B	E	V	X	Y
F	U	A	Q	B	Y	K	E	I	G	Y	W	K	H	H
X	C	T	D	N	I	L	P	S	R	S	U	F	Y	K
Y	D	R	N	E	K	I	O	I	O	H	S	Z	R	U
D	V	O	E	E	R	L	P	V	W	Q	V	O	V	M
Q	F	V	G	L	M	S	A	E	T	R	W	H	J	L
M	L	W	G	Q	U	O	H	H	H	M	A	N	G	O
H	I	A	V	D	T	P	M	I	A	F	E	O	B	E
R	R	T	A	O	B	H	J	E	P	A	S	P	K	L
I	Y	A	C	W	W	B	T	O	T	A	M	Y	S	L
K	P	I	E	C	N	E	I	L	I	S	E	R	D	G
Y	G	D	L	A	M	L	G	A	L	V	F	D	W	A

Row  
Boat  
Oar  
Vision  
Teamwork

Success  
Leadership  
Growth  
Resilience  
Momentum

### "WE ARE LOCAL"

ADVERTISE  
HERE

406.899.0404

### What's Happening Great Falls

#### Coffee and Business (CAB)

Wednesdays @ 9:00 a.m.  
Location: The Station, 119 River Drive North

#### Singo

Tuesdays @ 6:30 p.m.  
Annie's Tap House

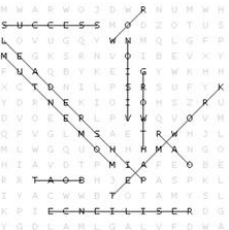
#### Tardi Gras

February 28th  
NewBerry

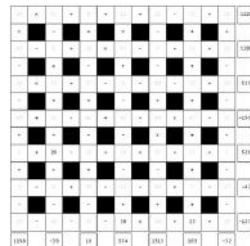
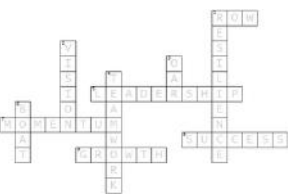
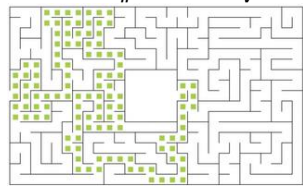
### Did You Know...

The first motorized snowplow was developed in 1913-1914 by Good Roads Machinery in Kennett Square, PA. It was specifically designed to meet the needs of the New York City Street Cleaning Bureau, making it one of the earliest snow removal innovations built for motorized equipment.

### Answers



Brain Teaser Answer: candle



## Here for Our Community's Heroes!

Proudly sponsoring this salute to our military and first responders, the **Brett Harris Agency** is your local champion in safeguarding what matters most. Whether it's personal, commercial, vehicle, life, home, or recreational insurance, we tailor protections to fit your life. In challenging times, we're your fortress of savings and security.

Ready for a personalized insurance experience?

Call us at 406.452.6696

**Brett Harris Insurance Agency – where your peace of mind is our priority!**



Clarke and Lewie's  
Life in Bloom  
Central Ave meats  
Fire Pizza  
Luna Coffee  
Double Barrel

Street Burgers  
Tracy's Home Depot  
Electric City Speedway  
Teriyaki Madness  
SunMed  
Wheat Montana

Cafe Rio  
Brush Crazy  
Smoked  
Brian's Top Notch Cafe  
BackRoads  
Inge's Fashions

