

spenard builders supply 

BUILD YOUR CABIN WITH SBS

KITS & SHELL PACKAGES

Easy to Ship - Easy to Build



SBS CABIN SHELL PACKAGE | 12' X 16' CARIBOU



Image shown is not the basic package.

The SBS Modular Wall Panel System

Flexible Design!

The Caribou Cabin package includes floor joists, trusses, prebuilt wall panels, windows and doors. The Caribou Cabin basic shell package starts at 12'x16'. Utilizing the 4' modular panels you can extend the size of your cabin in 4' increments. It allows you to decide how big or small to build, to fit your needs.

Field Panels are solid faced and corner panels come in left and right sections. All panels are available with your choice of T1-11 or OSB siding. The Door Panel is pre-cut for a 3'0" X 6'8" exterior door and Window Panel-openings are cut to fit various size windows. This allows you to substitute windows or a door, to suit

your personal design. Other options, including garage door panels are also available.

Cabin Shell Includes:

- 2 x 6 construction with 16" O.C. studs
- Pier blocks
- Floor beams
- BCI joists
- Flooring plywood
- Smart Panel Wall panels
- 3'x3' double pane slider Windows (2)
- Exterior Fiberglass Door
- Roof trusses
- Metal roofing (choice of colors)
- Steps
- Handrails
- All fasteners required



ADDITIONAL CRITERIA/NOTES:

SBS CABIN SHELL PACKAGE | 16' X 20' CARIBOU



Image shown is not the basic package.

Customize and Design

Portable Design

Most components weigh less 100 lbs. and can be handled easily by two people. The 16'x20' kit pieces can be transported without the use of heavy equipment. SBS offers delivery options, to help you get closer to building your dream cabin.

How to Build:

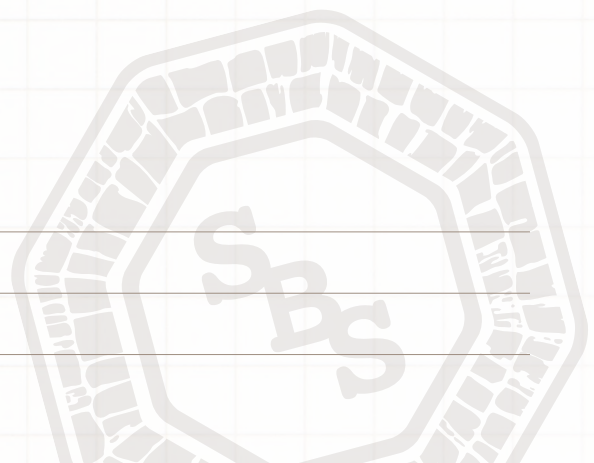
SBS offers step by step directions on "How to Build". You can ask your sales rep. for a print out, DVD or find it on You Tube. Some carpentry ability is required.

Multiple Finish Options:

- Insulation
- Drywall
- Paneling
- Electrical
- Floor coverings
- Ceilings
- Decking
- Stairs
- Heating
- & more!



ADDITIONAL CRITERIA/NOTES:





BLACK BEAR | 16' X 20' SBS Cabin Shell Package #320

2 STORY CABIN WITH LOFT & COVERED PORCH

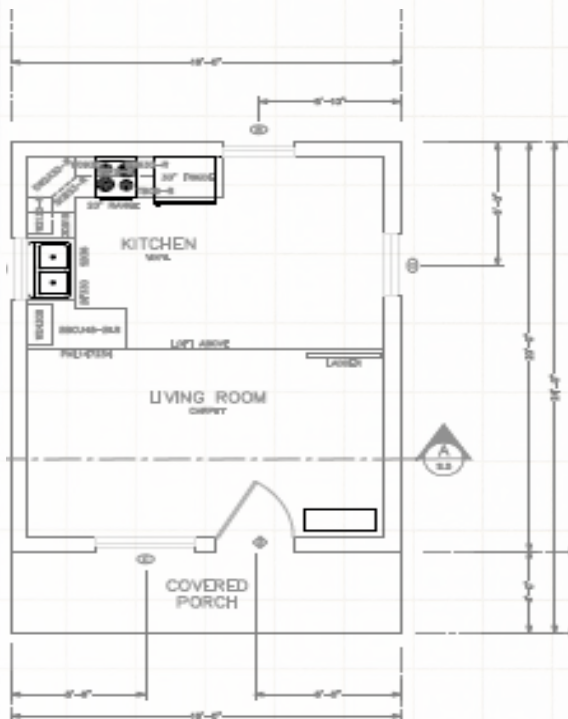
Estimated Shipping Weight: 20,000 lbs.



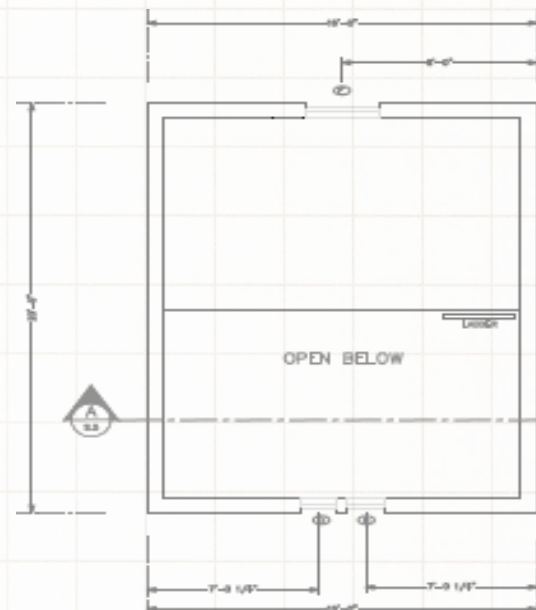
Front Elevation



Side Elevation



Lower Level Floorplan



Upper Level Floorplan

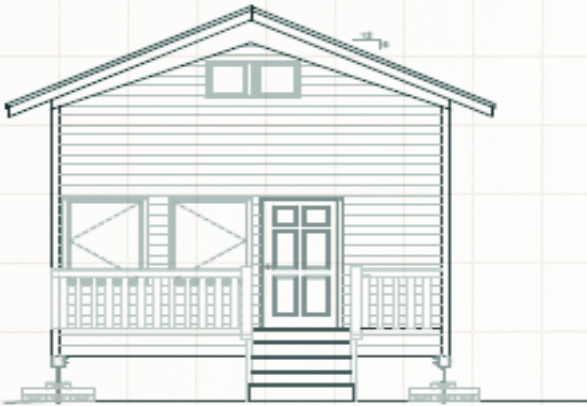
ADDITIONAL CRITERIA/NOTES:



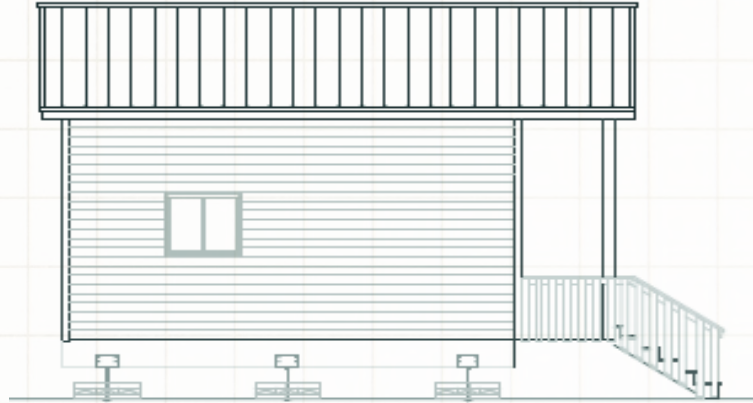
GRIZZLY BEAR | 20' X 24' SBS Cabin Shell Package #480

2 STORY CABIN WITH LOFT & COVERED PORCH

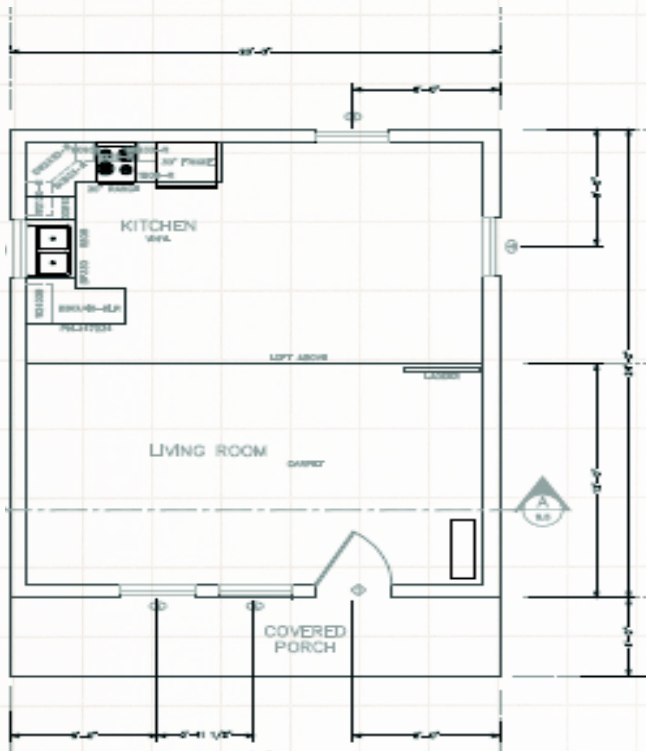
Estimated Shipping Weight: 25,000 lbs.



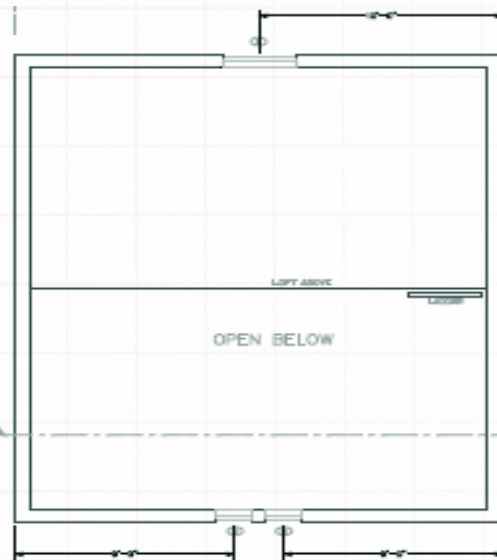
Front Elevation



Side Elevation

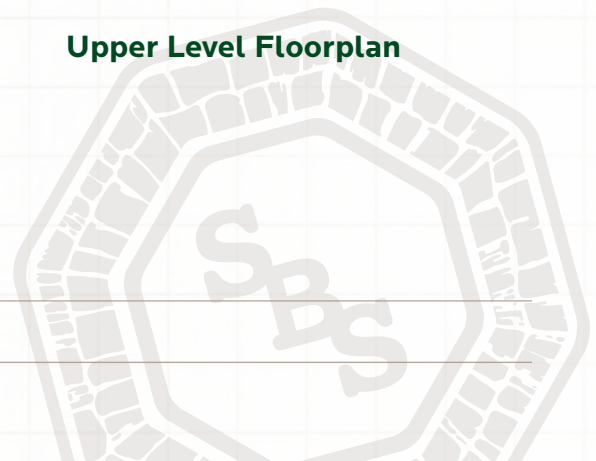


Lower Level Floorplan



Upper Level Floorplan

ADDITIONAL CRITERIA/NOTES:

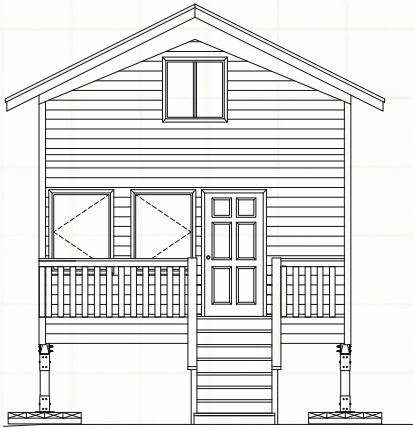




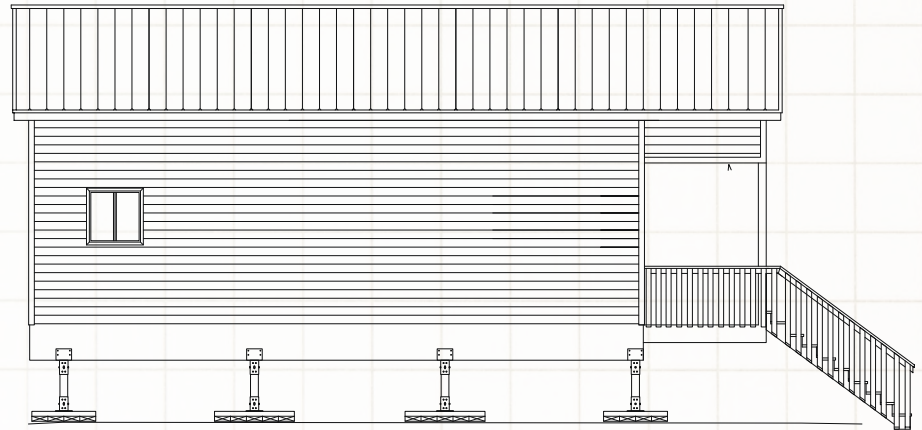
KODIAK BEAR | 24' X 28' SBS Cabin Shell Package #800

2 STORY CABIN WITH LOFT & COVERED PORCH

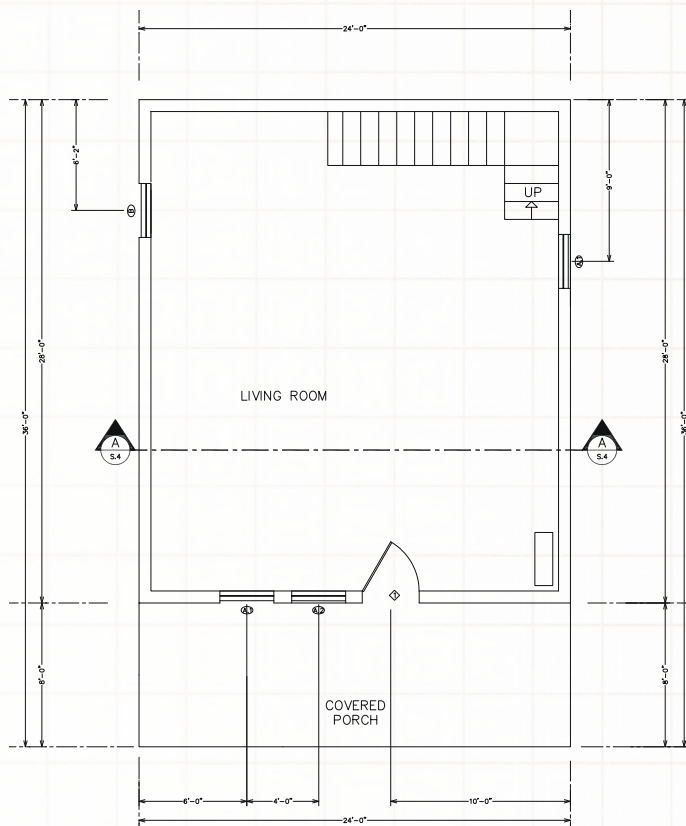
Estimated Shipping Weight: 41,000 lbs.



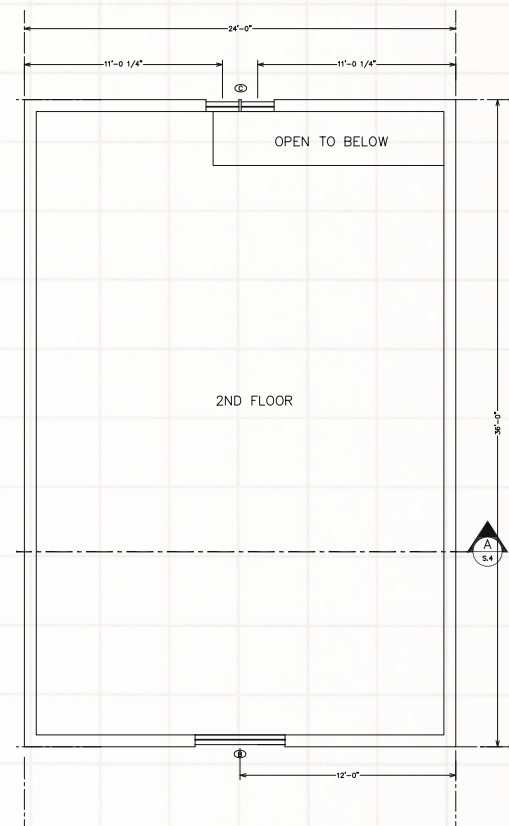
Front Elevation



Side Elevation



Lower Level Floorplan



Upper Level Floorplan

ADDITIONAL CRITERIA/NOTES:



Image shown may not be the basic package.

The Bear Series Cabin Shell Packages Include:

**Exclusively
at SBS!**



- Foundation Treated Pads and Adjustable Bearing Brackets
- Floor System with 5.5"x15" GLB's/CD Ply Sheathing
- Prefabricated Wall Panels with CD Ply Sheathing and Cedar Trim
- Roof Truss Package with Roof/Gable Sheathing
- Loft Floor Framing with 5/8" CD Ply (Half Loft Ledger to Wall Panels)
- Metal Roofing with Felt
- 6 Panel Man Door
- Vinyl Windows
- 2x Treated Deck Framing and Boards/Porch Beams
- Assembly Hardware
- Exterior Wall/Trim Paint
- Loft Ladder System

Optional Add-On Packages

- **Insulation (roof, walls & soffit sheathing)**
- **Sheetrock**
- **Kitchen (packaged 8'x9' - corner section)**
- **Siding (Klondike metal siding)**

Specifications subject to change without prior notice. Refundable deposit for the assembly drawing set and written assembly-text will be required. Only available with the purchase of the cabin package.

**We have several other
Add-Ons available.**

SBS can fully customize your cabin. Appliances, Cabinets, Countertops, Flooring, Heating and more! Additional Add-Ons will be quoted upon request.

spenard builders supply

Thank you for your interest in a SBS Cabin Package. Our cabin packages have been designed with Alaskans in mind. Affordable, comfortable cabins that will stand-up to tough weather conditions. We've made a point of selecting building materials that have a proven record in rural communities with available materials like metal siding and roofing, R-21 and R-38 insulation and energy rated vinyl windows.

Our program offers a selection of cabin plans, with itemized materials lists included with each package. We can customize any plan to your specific needs.

The strength of our program is service. No one has more experience than Spenard Builders Supply when it comes to rural Alaska. We understand the challenges of a short building season. We've developed freight options that provide more flexibility to your building plans. Your cabin package will be backed by a team of professionals that know Alaska. From Barrow to Sitka, SBS has been making dreams come true for over 70 years.

We look forward to working with you.

FOR MORE INFO VISIT
SBSALASKA.COM &

ASK SBS

Visit our **YouTube** Channel to
learn how to build a Caribou!



**spenard
builders
supply **