

FOR LEASE - OFFICE BUILDING

2449-2459 James Street, Syracuse, NY 13206



8,553 SF AVAILABLE | 1-STORY | 15 PARKING SPACES

BELLCORNERSTONE
Commercial Real Estate

FOR MORE INFORMATION:

Mark Bethmann

BellCornerstone

315.427.7676

mbethmann@bellcornerstone.com

Dan Lynch

BellCornerstone

315.498.1600

dlynch@bellcornerstone.com



www.BellCornerstone.com

PROPERTY OVERVIEW

2449-2459 James Street, Syracuse, NY 13206

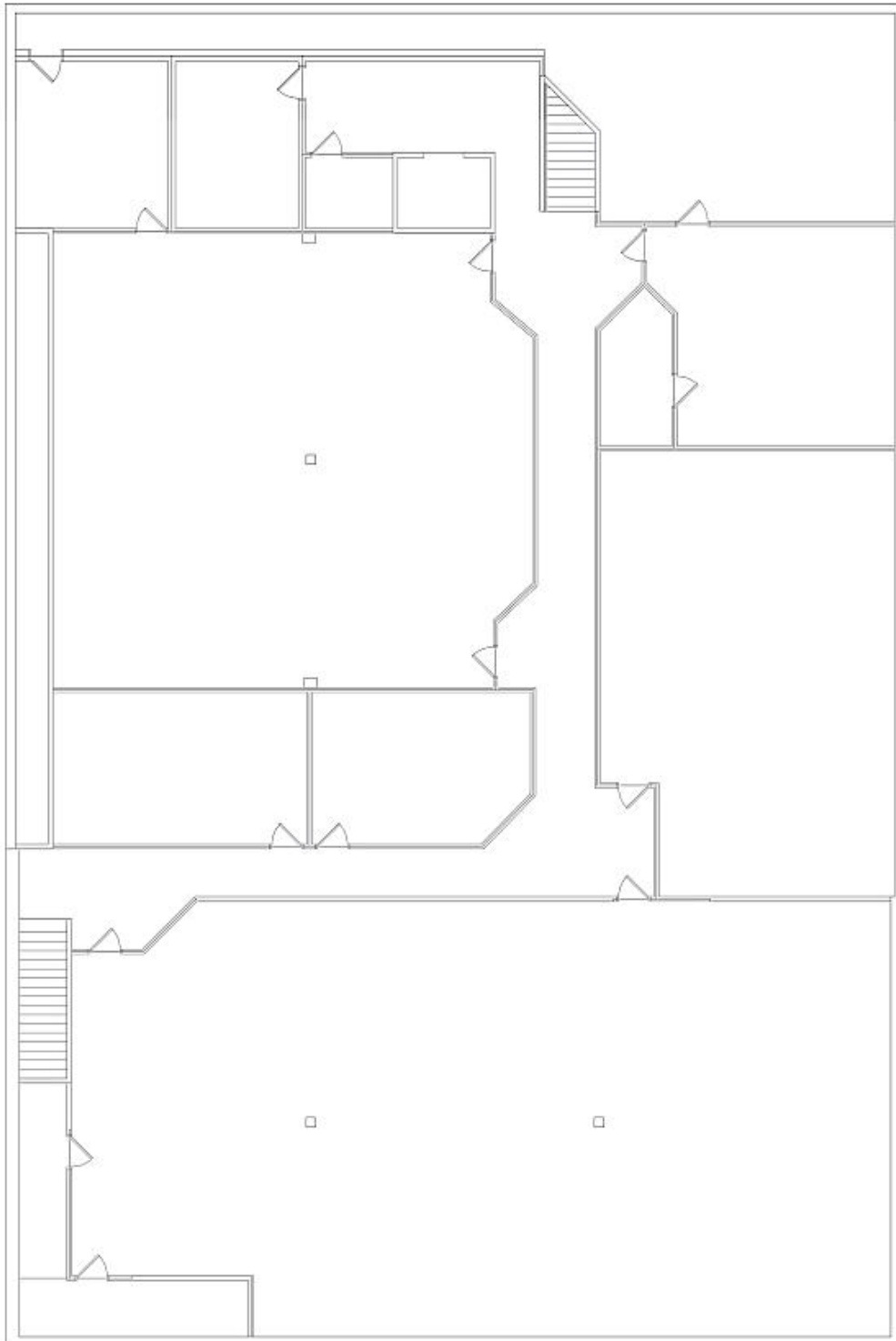


PROPERTY FEATURES

Property Type:	Office
Building Class:	C
Year Built:	1920
Building SF:	8,553 SF
Floors:	1
Parking:	15 Surface Parking Spaces

FLOORPLAN

2449 James Street Annex Lower Level



NY432, Lower Level
NY432-2459 James Street
2459 James Street
Syracuse, NY



**2449-2459 James Street,
Syracuse, NY 13206**

BELLCORNERSTONE

Commercial Real Estate

FOR MORE INFORMATION:

Mark Bethmann

BellCornerstone

315.427.7676

mbethmann@bellcornerstone.com

Dan Lynch

BellCornerstone

315.498.1600

dlynch@bellcornerstone.com

DISCLAIMER: The information contained in this flyer has been prepared to provide summary information and to establish a preliminary level of interest in the subject property. The information contained herein is for informational purposes only and does not constitute an offer to sell, lease, or sublease, nor is it a solicitation for same.