



2023-24



April 13, 2024



Rucks2pucks

**Celebrating 55 Years of
Boston Bruins Tradition on Ice**



OFFICIAL

Chicken Sandwich OF THE Boston Bruins Alumni Association



Greater Boston Area & New Hampshire

JAMES
&
WHITNEY
Co.

PROUD TO BE THE OFFICIAL
ROOFING + EXTERIORS
PARTNER OF THE
BOSTON BRUINS ALUMNI
ASSOCIATION!

SERVING
MAINE &
NEW
HAMPSHIRE!



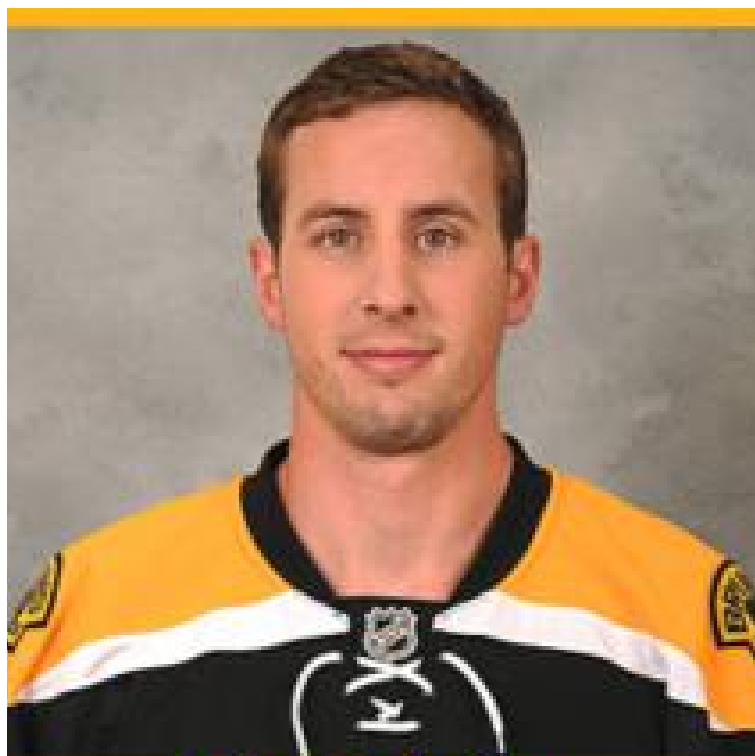
ROOFING
SIDING
DECKING +
MORE!



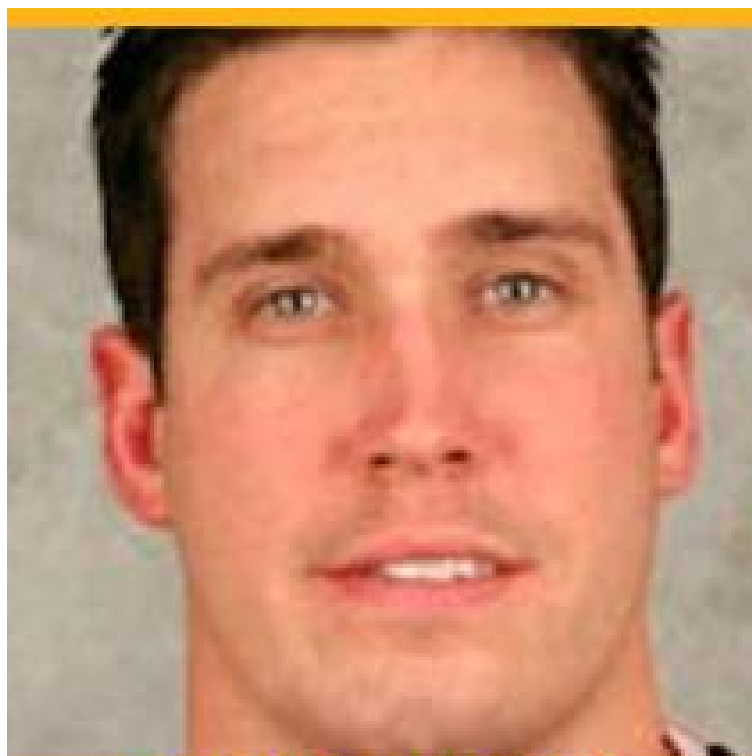
Boston Bruins Alumni Roster

	Coach	Tom Songin	Boston College; 3 years with Boston Bruins
	Coach	Patrick Leahy	3 seasons with Boston Bruins
#52	Goalie	Shamus Egan	Merrimack College
#10	Forward	Kenny Hodge	4 years in NHL; 2 years with Boston Bruins
#11	Forward	Joe Mullen	17 NHL seasons; 1 with Boston Bruins
#18	Defense	Rich Brennan	6 NHL seasons; 1 with Boston Bruins
#20	Forward	Bob Sweeney	10 years in NHL; 6 with Boston Bruins
#23	Forward	Bill Bennett	2 years in NHL; 1 with Boston Bruins
#29	Forward	Luc Dufour	4 NHL seasons; 2 with Boston Bruins
#32	Forward	Bruce Crowder	4 years in NHL; 3 with Boston Bruins
#38	Defense	Bobby Allen	3 years in NHL; 2 with Boston Bruins
#40	Defense	Bruce Shoebottom	4 NHL seasons with Boston Bruins
#41	Forward	Guy Larose	6 NHL seasons; 1 with Boston Bruins
#42	Forward	Tim Sweeney	8 years in NHL; 3 with Boston Bruins
#43	Forward	Jean-Yves Roy	4 NHL seasons; 2 with Boston Bruins
#52	Defense	Chris Dymant	2 years with Providence Bruins
#59	Forward	Tim Schaller	7 NHL seasons; 2 with Boston Bruins
#70	Defense	Patrick Mullen	Son of Joe Mullen

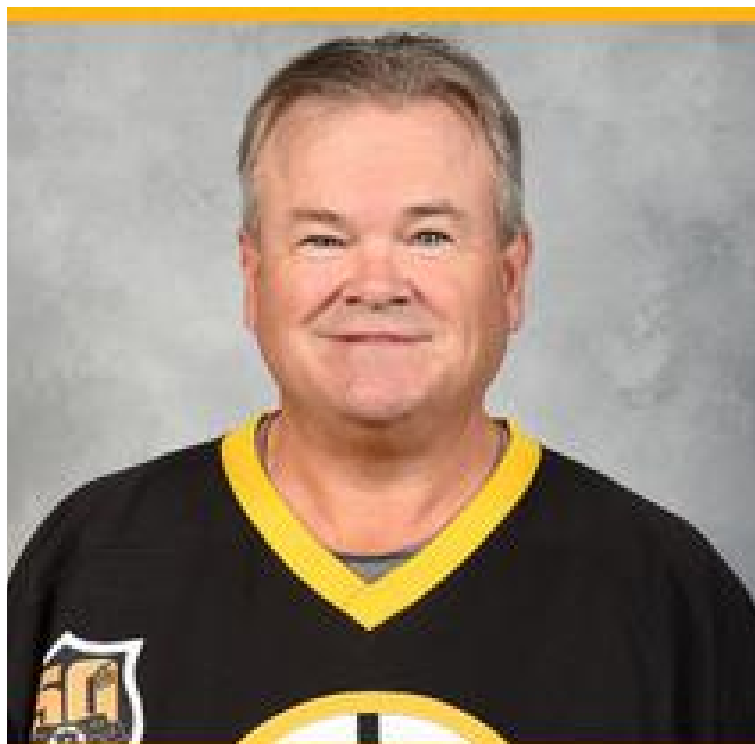
BOSTON BRUINS ALUMNI TEAM
2023-24 season



Tim Schaller
2016-2018



CHRIS DYMENT
Providence Bruins



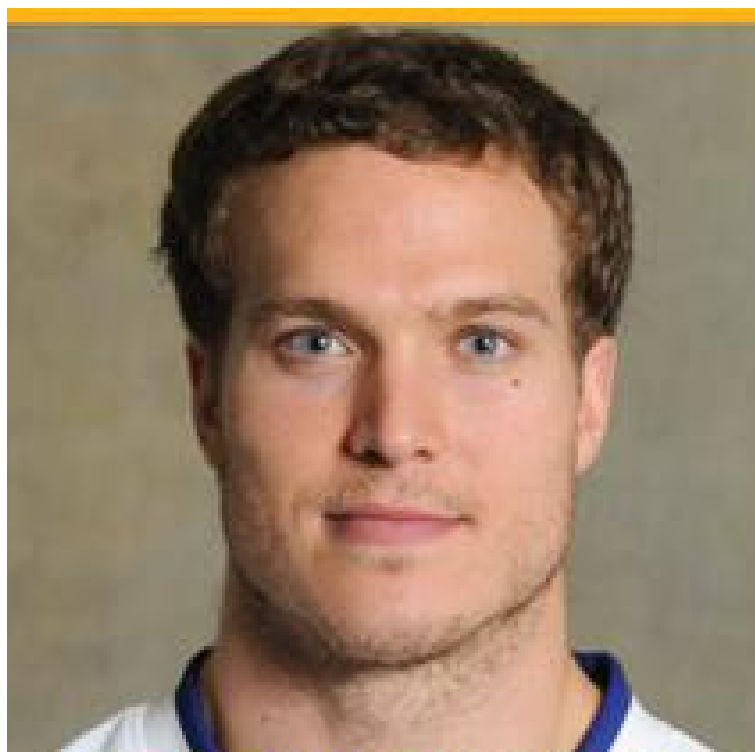
TIM SWEENEY
1992-93 & 1994-97



SHAMUS EGAN
Honorary Alumni

Boston Bruins Tradition on Ice

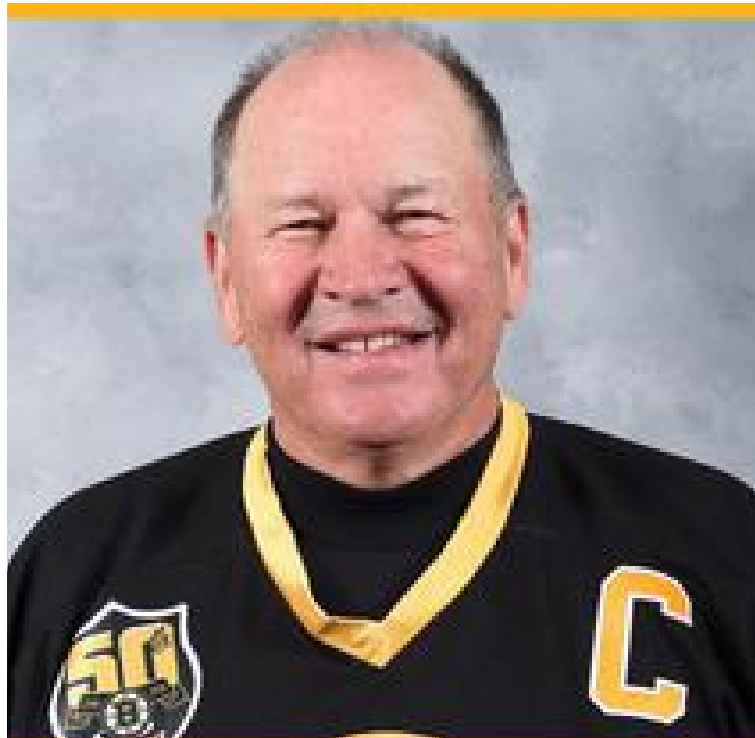
BOSTON BRUINS ALUMNI TEAM
2023-24 season



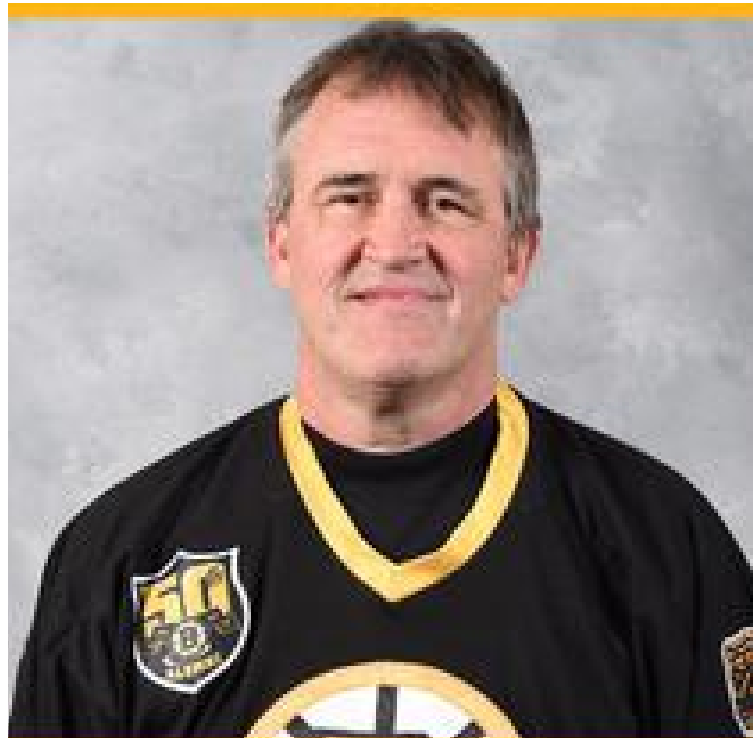
PATRICK MULLEN
Honorary Alumni



KEN HODGE, JR
1990-1992



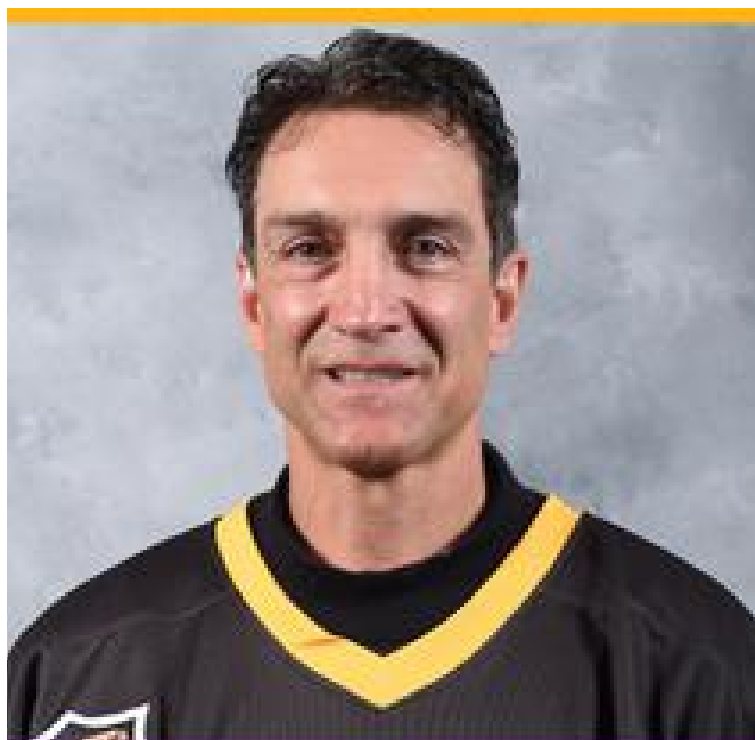
TOM SONGIN
1978-1981



BRUCE SHOEBOTTOM
1987-1991

Boston Bruins Tradition on Ice

BOSTON BRUINS ALUMNI TEAM
2023-24 season



JEAN YVES-ROY
1996-1998



GUY LAROSE
1994-1995



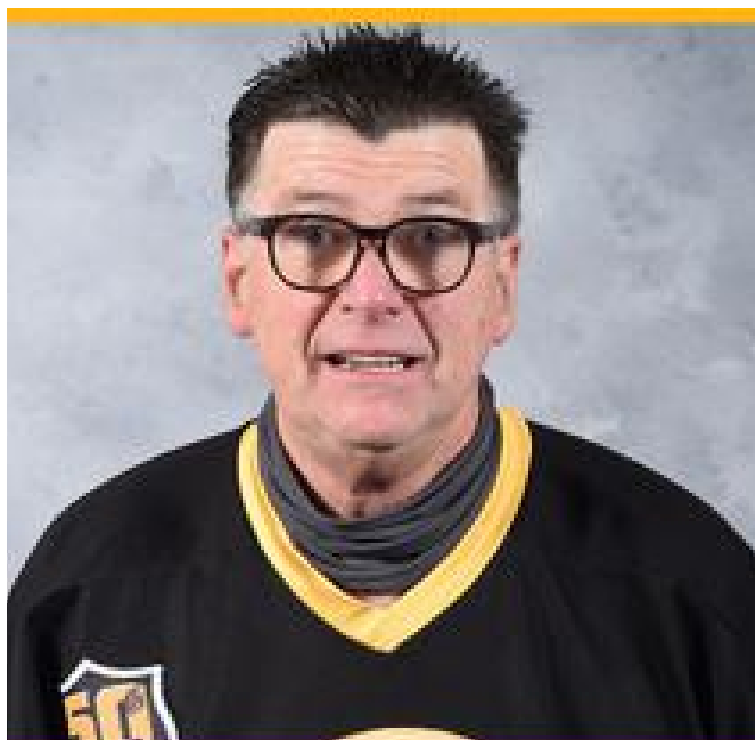
BRUCE CROWDER
1981-1984



RICHIE BRENNAN
2002-2003

Boston Bruins Tradition on Ice

BOSTON BRUINS ALUMNI TEAM
2023-24 season



BILLY BENNETT
1978-1979



BOBBY ALLEN
2006-2008



PAT LEAHY
2002-2006



BOB SWEENEY
1986-1992

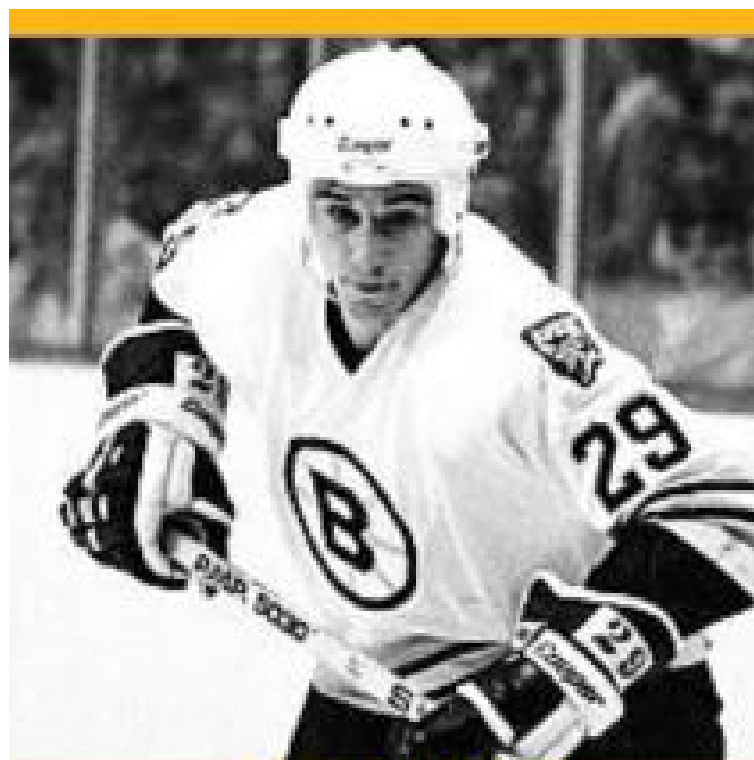
Boston Bruins Tradition on Ice

BOSTON BRUINS ALUMNI TEAM

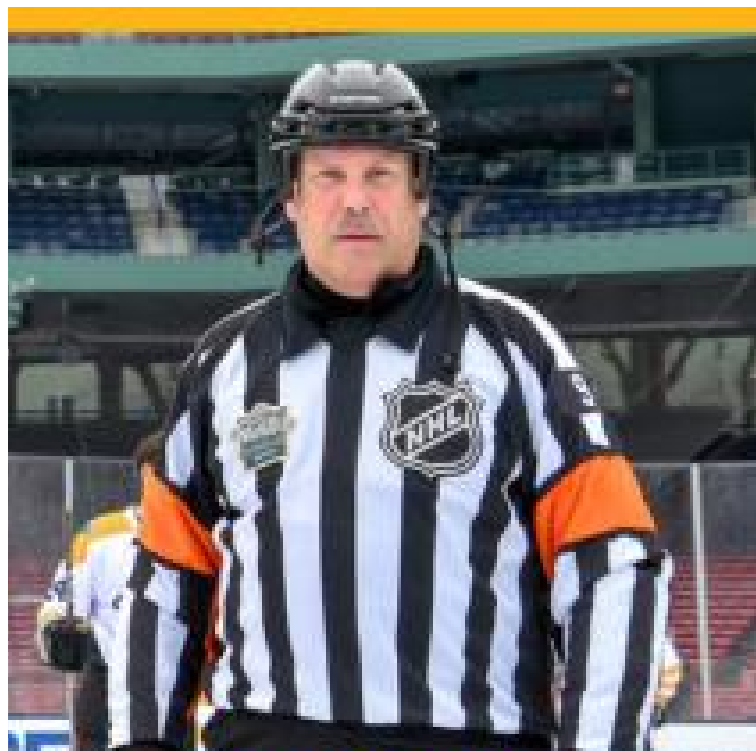
2023-24 season



GRAEME TOWNSHEND
1989-1991



Luc Dufour
1982-1984



Don Garcia
Referee



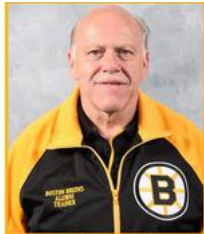
Doug Smith
Referee

Boston Bruins Tradition on Ice

BOSTON BRUINS ALUMNI TEAM 2023-2024 season



Karen Wonoski
Bruins Alumni Coordinator



Bob Cormier
Alumni Hockey Operations



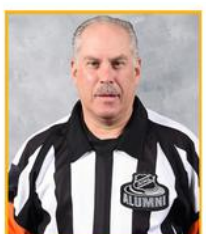
John Horrigan
Alumni Game Announcer



Frank Walker
Alumni Trainer/Equipment MGR



Mike Foley
Alumni Trainer/Equipment MGR



Don Garcia
Alumni Game Referee



Maria Coan
Alumni Memorabilia Sales



Alex Bezanson
Alumni Trainer/Equipment MGR



Mark Willand
Media Director



Steve Babineau
Bruins Photographer



Craig Michaud
Alumni Photographer



Ned Costantino
Alumni Photographer

**Watch Today's Game on May 1 at
BostonBruinsAlumni.com**

2023-24 Schedule

Saturday, November 4, 2023 at 4:00pm
 Saturday, November 11, 2023 at 2:00pm
 Saturday, November 18, 2023 at 1:00pm
 Sunday, November 19, 2023 at 2:00pm

DCU Center, Worcester, MA
 Warrior Ice Arena, Brighton, MA
 NESCC, Marlborough, MA
 Warrior Ice Arena, Brighton, MA

Why Me & Sherry's House
 Team Edna
 Wes Tuttle Foundation
 Mass. Down Syndrome Congress

Saturday, December 2, 2023 at 4:00pm
 Sunday, December 17, 2023 at 2:00pm

Warrior Ice Arena, Brighton, MA
 Warrior Ice Arena, Brighton, MA

Warrior for Life Fund
 Matt Light Foundation

Saturday, January 6, 2024 at 4:00pm
 Saturday, January 13, 2024 at 4:00pm
 Sunday, January 14, 2024 at 4:00pm
 Saturday, January 20, 2024 at 2:00pm
 Sunday, January 21, 2024 at 2:30pm
 Friday, January 26, 2024 at 7:00pm

Pop Whalen Arena, Wolfeboro, NH
 Berkshire School, Sheffield, MA
 Tsongas Arena, Lowell, MA
 Warrior Ice Arena, Brighton, MA
 Skate 3, Tyngsboro, MA
 Wells Fargo Center, Philadelphia, PA

Friends of Pop Whalen
 Berkshire County Special Rec. Team/WFL
 Bridge Club of Greater Lowell
 Warrior for Life Fund
 Tom Smith Foundation
 50th Anniv. of Flyers 1974 Stanley Cup

Saturday, February 3, 2024 at 1:00pm
 Sunday, February 4, 2024 at 3:00pm
 Saturday, February 17, 2024 at 3:00pm
 Saturday, February 24, 2024 at 1:00pm
 Sunday, February 25, 2024 at 2:30pm

The Bog, Kingston, MA
 Everett Arena, Concord, NH
 Walter Brown Arena, Boston, MA
 Amelia Park Arena, Westfield, MA
 Asiaf Arena, Brockton, MA

Great Blizzard Special Hockey
 Stephen Cmar ROTC Scholarship Fund
 Salesforce/Just Keep Livin
 Amelia Park Arena/Westfield Police Dept.
 Brockton Fire Department

Saturday, March 2, 2024 at 2:00pm
 Sunday, March 10, 2024 at 2:00am
 Saturday, March 16, 2024 at 2:00pm
 Saturday, March 23, 2024 at 2:00pm
 Sunday, March 24, 2024 at 2:00pm
 Saturday, March 30, 2024 at 1:00pm

The Colisée, Lewiston, ME
 Rinks at Exeter, Exeter, NH
 Dover Ice Arena, Dover, NH
 Warrior Ice Arena, Brighton, MA
 Larsen Rink, Winthrop, MA
 Veteran's Memorial Rink, Haverhill, MA

Lewiston Police Department
 Spartans for Life
 My Breast Cancer Support
 Moments that Matter
 Boston Bruins Foundation
 Haverhill Police Relief Association

Sunday, April 7, 2024 at 2:00pm
 Saturday, April 13, 2024 at 3:00pm
 Sunday, April 14, 2024 at 1:00pm
 Saturday, April 20, 2024 at 2:00pm
 Sunday, April 28, 2024 at 1:00pm

Warrior Ice Arena, Brighton, MA
 Quincy Ice Arena, Quincy, MA
 Danbury Ice Arena, Danbury, CT
 Warrior Ice Arena, Brighton, MA
 Benny Magiera Mem. Rink W. Warwick, RI

Dana Farber Cancer Institute
 Rucks2Pucks
 Danbury Girls Hockey
 Stanley Keg Games
 Central Rhode Island Knights Hockey

IT'S TIME FOR
 YOUR BRAND TO
 TAKE CENTER ICE.

DISCOVER THE PERFECT LOCATION FOR YOUR
 BUSINESS WITH OVERTIME REAL ESTATE.



OVERTIME
 REAL ESTATE



PAT LEAHY

PAT@OVERTIMERE.COM

@OVERTIMERELL



Rucks2Pucks Roster

Head Coach: Tom Beech, USMC

Asst. Coach: Jon Zwirblia, USMC

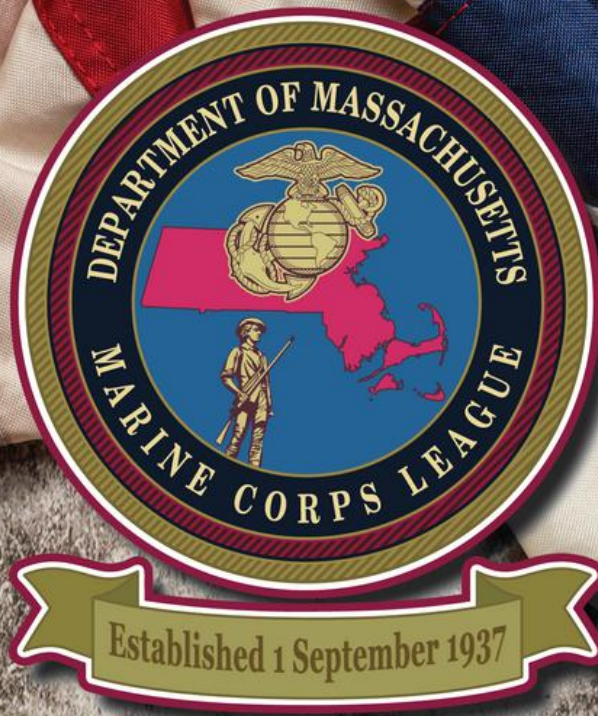
#5 Mark Burr, USMC
#7 Mike Griffith, USMC
#8 Sean Smith, USMC
#12 Dave Samara, USMC
#13 Josh Livingstone, USMC
#15 Sean Adams, USMC
#16 Dan Beneway, US Navy
#17 Luke McCullough, USMC
#28 Dan Krawetz, US Army
#37 Pat Slason, USMC
#41 Sean Dykens, US Army
#73 Jeremy Souza, USMC
#77 Lucas Breton, USMC
#95 Jake Wood, US Army

Alternate Captains:

#44 Mike Szlachta, USMC
#88 Mike Wright, USMC

Captain:

#55 Brendan Cabey, USMC



**HAVE YOU SERVED HONORABLY
IN THE UNITED STATES MARINE CORPS?**

**DO YOU MISS THE CAMARADERIE
YOU ONCE EXPERIENCED?**

LOOK NO FURTHER THAN THE MARINE CORPS LEAGUE!

In the Marine Corps League, you will be surrounded by like-minded brothers and sisters who are looking to better the lives of our fellow Veterans as well as our local community, all while enjoying the same traditions we experienced in the World's Finest United States Marine Corps.

SEMPER

Please Visit

FIDELIS

MCLDEPTOFMASSACHUSETTS.ORG

FOR MORE INFORMATION



Tom Beech

774-239-1673

Your Real Estate Professional

tombeechrealtor@gmail.com



**M.P.Wright
Plumbing & Heating**

Michael Wright

(781) 247 - 3929

mpwrightplumbing@yahoo.com

Fully Licensed & Insured
Veteran Owned & Operated

Milton

CAT

CMG HOME LOANS

DavidSamara.com



ACC SERVICES
QUALITY OVER QUANTITY
(817) 343-3714



Marine Corps League

★ ★ ★ ★ ★ ★ ★ ★

Worcester Detachment



Veteran owned

Veteran operated



Honorable Contracting

Full service build and repair

774-545-6187



ACE OF DOGS

BEHAVIORAL MODIFICATION - BASIC & ADVANCED OBEDIENCE -
CANINE GOOD CITIZEN CERTIFICATION - AGGRESSIVE DOGS

VETERAN OWNED & OPERATED

Proud partner of 22Mohawks, a non-profit for veteran suicide prevention





TD GARDEN IS PROUD TO SUPPORT THE
BOSTON BRUINS ALUMNI ASSOCIATION.



From your friends at TD Garden, proud home of the Boston Bruins.

TD GARDEN

Keep us in your sites.



Proud sponsor of the Boston Bruins: past, present and future

- Site Development
- Soil Remediation
- Earthwork

- Utility Work
- Site Improvements
- Equipment Rental

JAMES W.

FLETT

CO. INC.

EXCAVATING CONTRACTORS

800 Pleasant Street, Belmont, MA 02478 • 617-484-8500 • Fax 617-484-1279 • www.jwflett.com

YOUR TEAM, YOUR CHOICE.

We believe in building winning partnerships to protect your team for tomorrow. Whether your team is your family, business, or your employees, you can depend on Cross Insurance for the best insurance solutions.



COMMERCIAL INSURANCE PERSONAL INSURANCE EMPLOYEE BENEFITS SURETY

OFFICIAL INSURANCE BROKER



www.crossagency.com

Original Boston Garden established in 1928 Dolben established in 1929

The difference is DOLBEN

We are the Dolben Company – a dynamic real estate firm, with a family inspired culture, developing and managing best-in-class multifamily communities throughout the New England and Mid-Atlantic markets since 1929.

With our core value of stewardship, coupled with our extensive industry experience, we maximize each and every investment's potential.

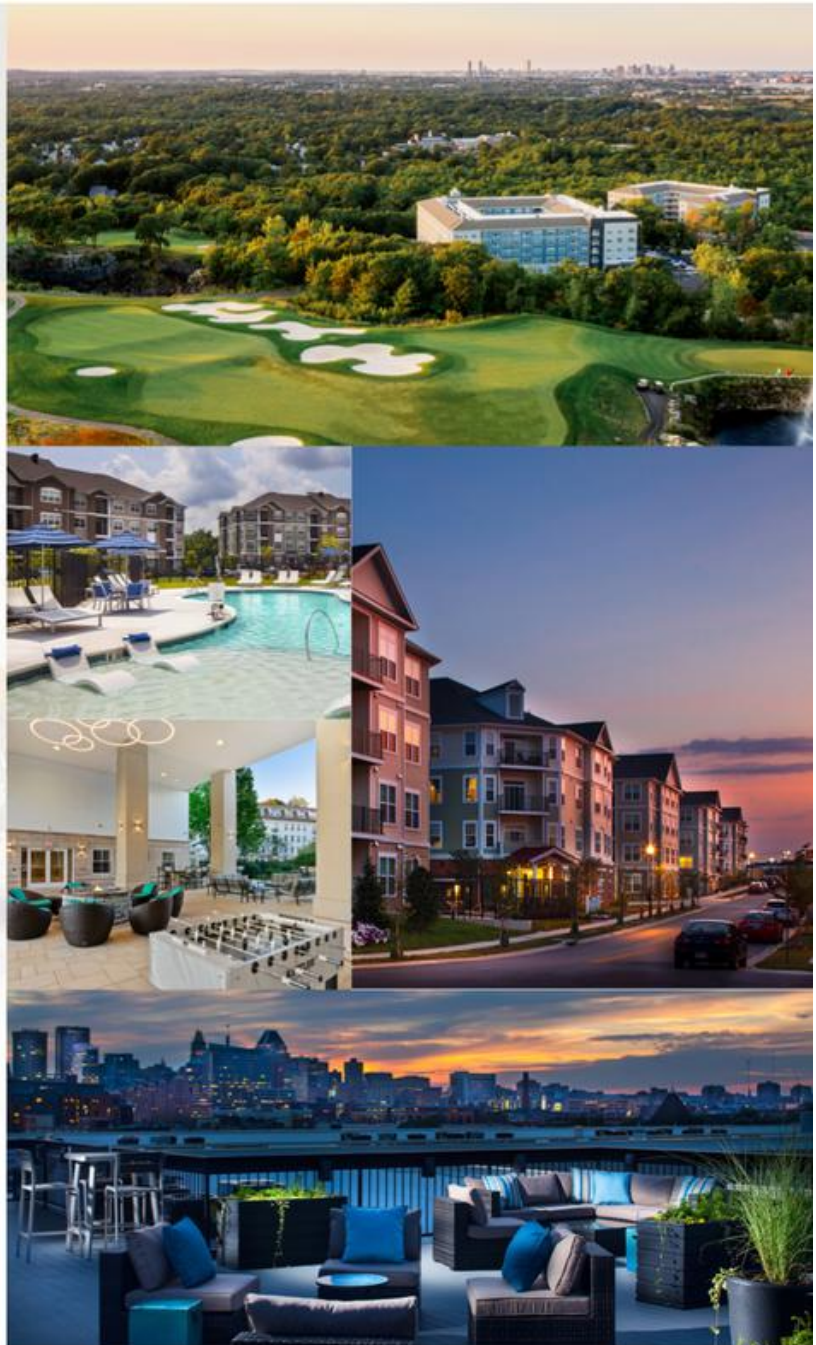
We are industry-leading experts with an innovative mindset. From site selection through construction – no development detail is too small.

We always put our residents first, working tirelessly to create communities people are proud to call home.

We are committed to fostering an inclusive and collaborative company culture that inspires personal and professional growth.

LET'S GO BRUINS!

DEVELOPMENT
MANAGEMENT
INVESTMENT



Founding Member of



150 Presidential Way, Suite 220 Woburn, MA 01801 | DOLBEN.COM



TRESCA

**Delicious Italian food
and traditional
hospitality in
Boston's North End.**

233 Hanover Street
Boston, MA 02113
p: 617-742-8240
f: 617-742-8246

info@trescanorthend.com



Multi Family

Hotels

KELLY'S

Student Housing

Turner Hill Golf Club

AAM15

Real Estate Investment & Management

David R. Masse
CEO / Founder

AAM15 Management, LLC is an independent private equity investment and management company with strong investment performance in commercial real estate spanning the East Coast of the United States.

www.aam15.com



WARRIOR ICE ARENA



"Official Practice Arena"



"Official Home Arena"



MURPHY
INSURANCE
AGENCY

ATTENTION!

- › Carpenters
- › Electricians
- › Plumbers
- › HVAC
- › Landscapers
- › Other Contractors

Want to save money on your insurance? Talk to us.
Get a free 2nd opinion. Give us a chance...you've got nothing to lose!

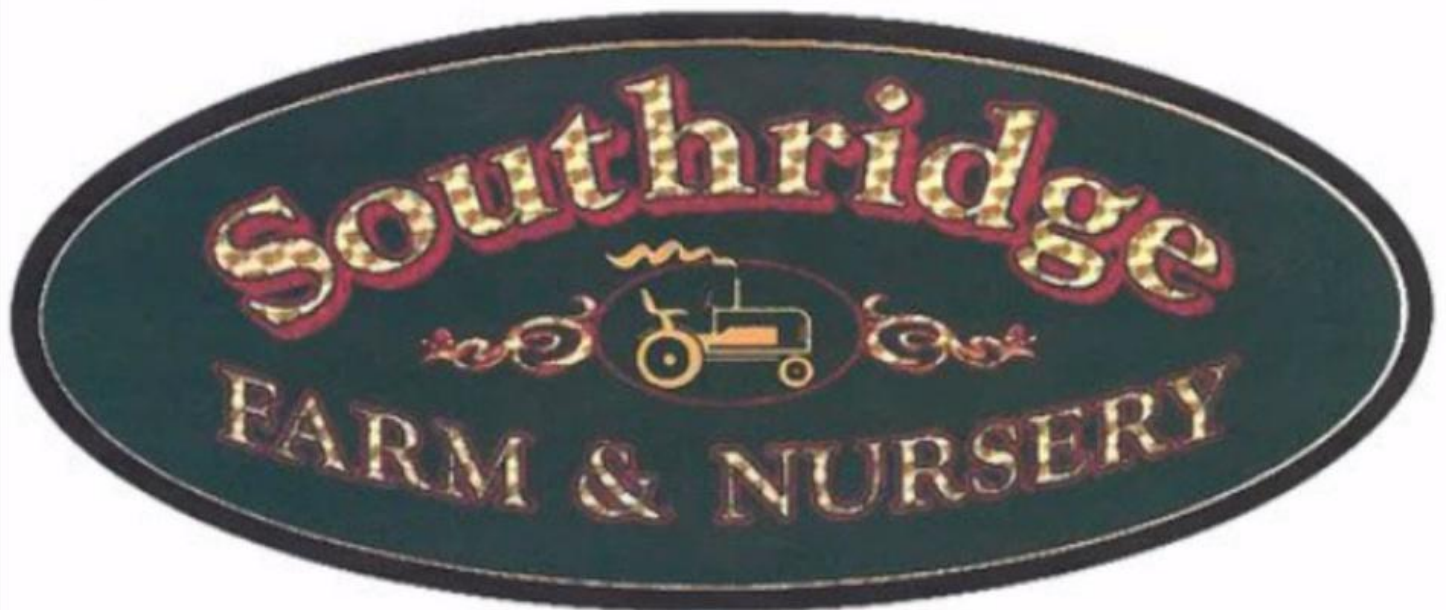
PROPERTY LIABILITY COMMERCIAL AUTO UMBRELLA EMPLOYEE BENEFITS
WORKERS' COMP BONDS EMPLOYEE BENEFITS DISABILITY LIFE



508 787 5177



businessinsurance@dfmurphy.com





Killington



LEGS[®]

LEGACY EQUITY GROWTH SERVICES



PJ HAYES INC.
EXCAVATING

399 SOUTH ST. WALPOLE MA 02081 | 508-668-9710



EXPERIENCE

THE POWER OF THE ATG NETWORK

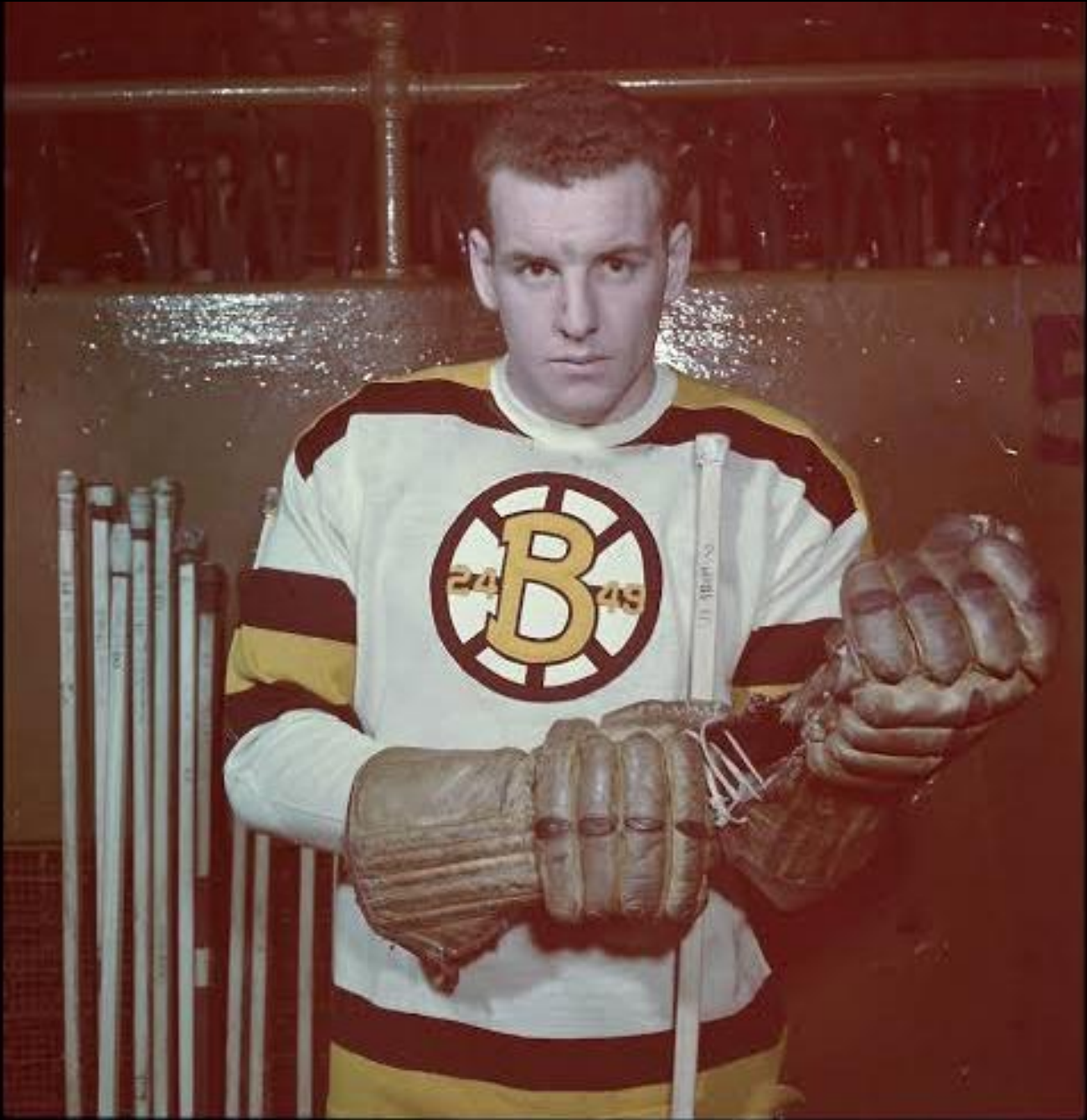


MASSACHUSETTS | NEW HAMPSHIRE | VERMONT

AdvantageTruckNE.com
877-4-ATG-HELP



*In Memory of our
Departed Friend*



ED SANDFORD
1928-2023