



spring summer



DESIGNED IN BELGIUM





spring summer

· 4



colours in this catalogue are illustrative and may vary slightly from reality

Breathing in the salty sea breeze with a refreshing cocktail in hand,
Sleeping like a rose in fresh satin linen on warm summer nights,
Enjoying the company of your beloved ones around a beautifully set table,
Snuggling up in some cosy crinkled plaids around a bonfire...

Oh summer, how we have missed you.





arctic summer



Soft colours inspired by the pastels
of sea shells and minerals.

Reconnect to your inner self with
the nature-centred simplicity of
Arctic Summer.











←
Kruwers
wandelroute
Fotoverzend
Kruwers op
Dordrecht

























If you really want to make a friend,
go to someone's house and eat with him...
the people who give you their food,
give you their heart.

CESAR CHAVEZ







spicy happiness

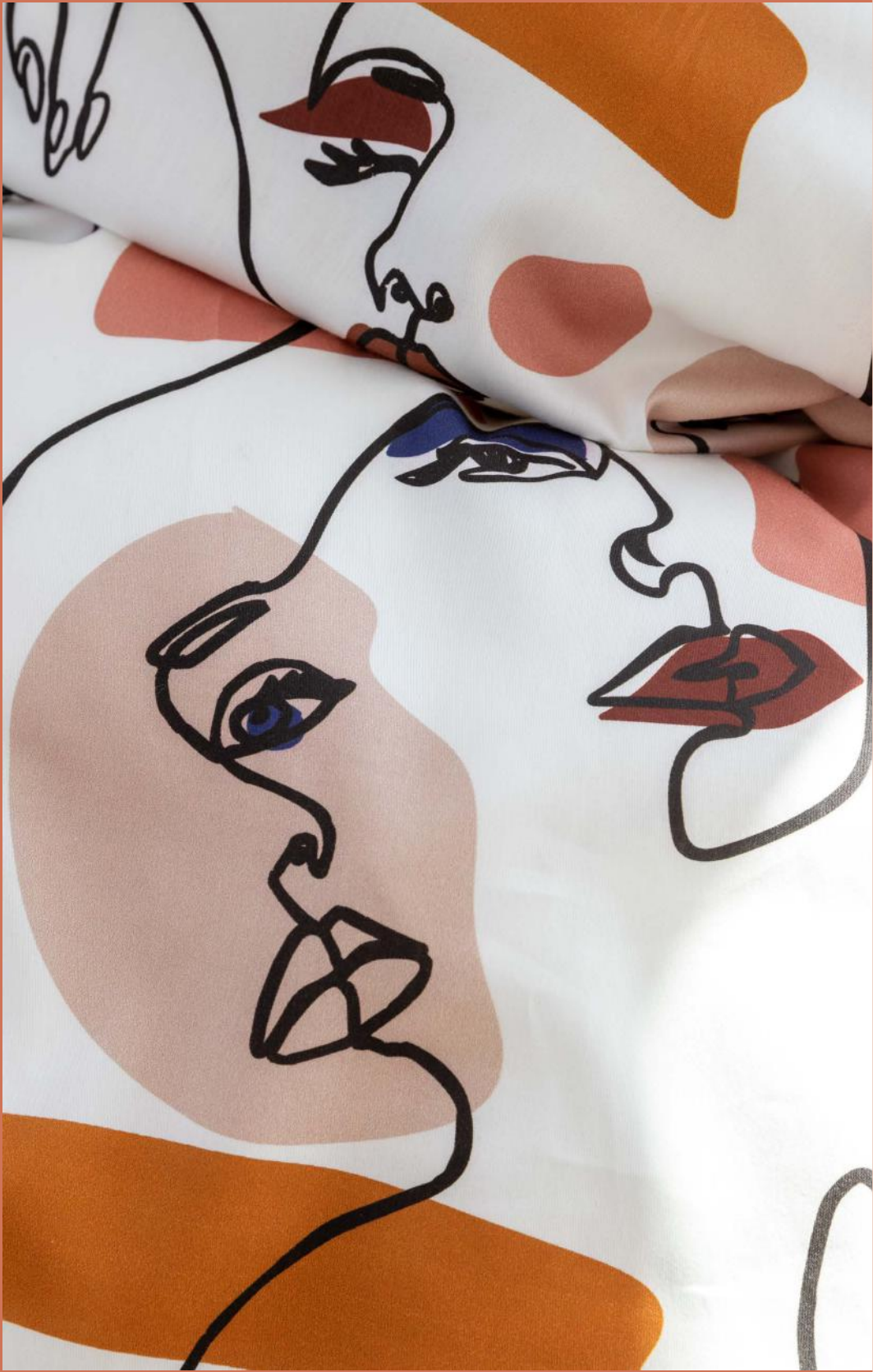
Bold and vivid colours, in perfect harmony
with rustic pink, immersing you into
an ethnic atmosphere.

















TRENDY TIE-DYE DUVET COVERS IN SOOTHING SALMON PINK.





DRIFT OFF INTO DREAMLAND IN LUXURIOUS PINK PERCALE SHEETS.



APEROL *spritz*

AN ORANGE GLASS OF HAPPINESS,
JUST FOR YOU.

Ingredients for 2 cocktails

- 2 x 10 cl Aperol
- 2 x 10 cl prosecco
- lots of ice cubes
- 4 slices of orange
- 2 reusable straws

Recipe

- Put some ice cubes in each wine glass.
- Pour in 10 cl Aperol and 10 cl prosecco.
- Add a dash of sparkling water.
- Garnish with an orange slice.
- Enjoy your aperitif!

















illuminating neutrals



A strong base of yellow, enriched with touches
of misty blue and dark grey.
The play of shades between warm and cold yellow
creating a contemporary vibe.











pallet cushions

Time to unwind.
Inside or outdoors.



strawberry lime PIMMS

|||||
SIT DOWN, RELAX AND ENJOY THE SWEET &
FRUITY COCKTAIL. TASTES LIKE SUMMER!

|||||
Ingredients for 2 cocktails

- 2 x 2,5 cl Pimm's no.1
- 2 x 5 cl lemonade (ginger ale, sprite,...)
- 4 slices of cucumber
- 4 slices of lime
- a couple of strawberries, cut in half
- 6 leaves of fresh mint
- lots of ice cubes
- 2 reusable straws

Recipe

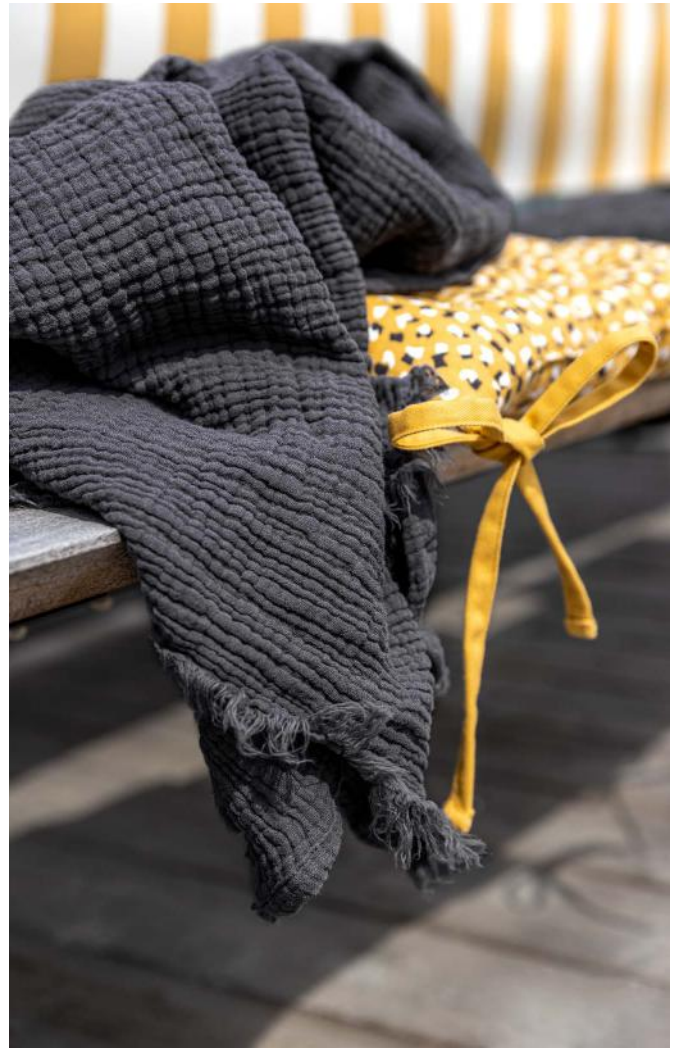
- Fill each glass with ice cubes.
- Divide the cucumber, strawberries, lime and the mint over the glasses.
- Pour 2,5 cl Pimm's in each glass.
- Top off with the lemonade and some reusable straws.
- You're good to go, enjoy!







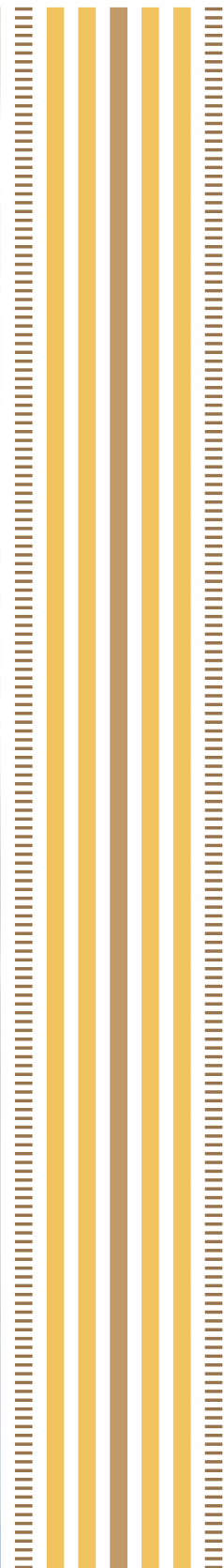




















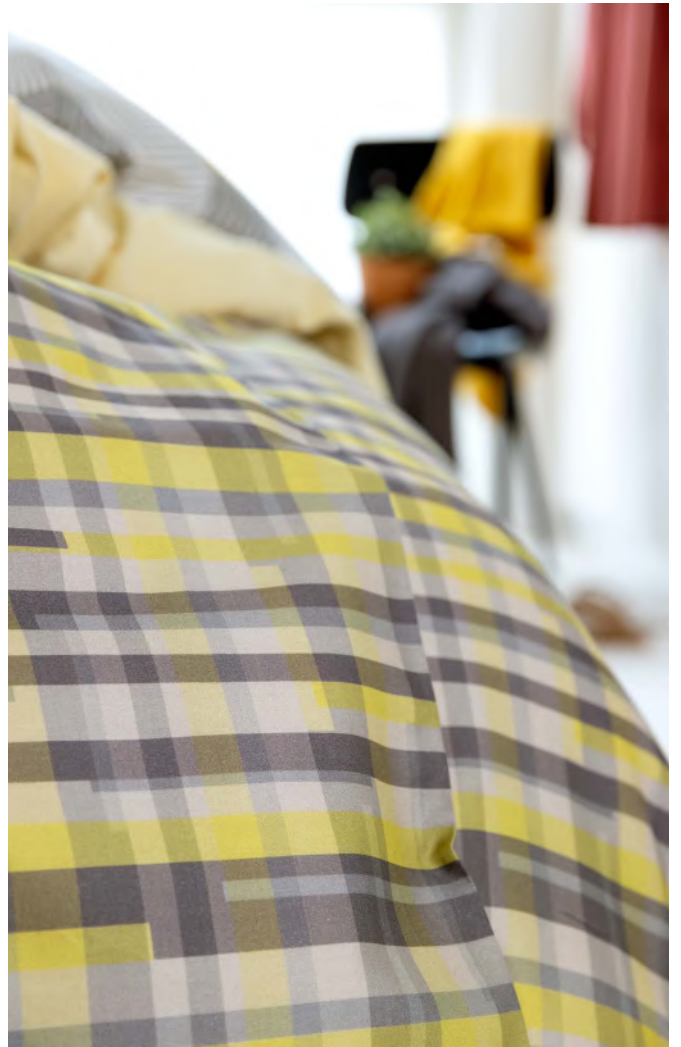












IT'S ALL IN THE DETAILS.



















SOGO, MADE OUT OF 94% RECYCLED MATERIALS.



greenhouse



An innovative ensemble of greens and
soft terracotta, drawing inspiration
from our rich flora.















LET'S FLY AWAY.



· 90











DELICATE BEDDING,
CREATING THE PERFECT ROMANTIC GETAWAY AT HOME.















caipirinha

WOW YOUR GUESTS WITH THESE
LOVELY GREEN COCKTAILS.

Ingredients for 2 cocktails

- 2 x 4 cl cachaça (Brazilian rum)
- 4 limes
 - 3/4 cut into wedges
 - 1/4 cut into slices
- 4 tsp of cane sugar
- crushed ice
- 2 reusable straws

Recipe

- Place the lime wedges and cane sugar in the glasses.
- Crush these two together.
- Fill the glasses with the crushed ice, add the cachaça and stir briefly.
- Finish the look with a slice of lime and a reusable straw.

















PICNIC BLANKETS,
FOR EFFORTLESS STYLE AND COMFORT.

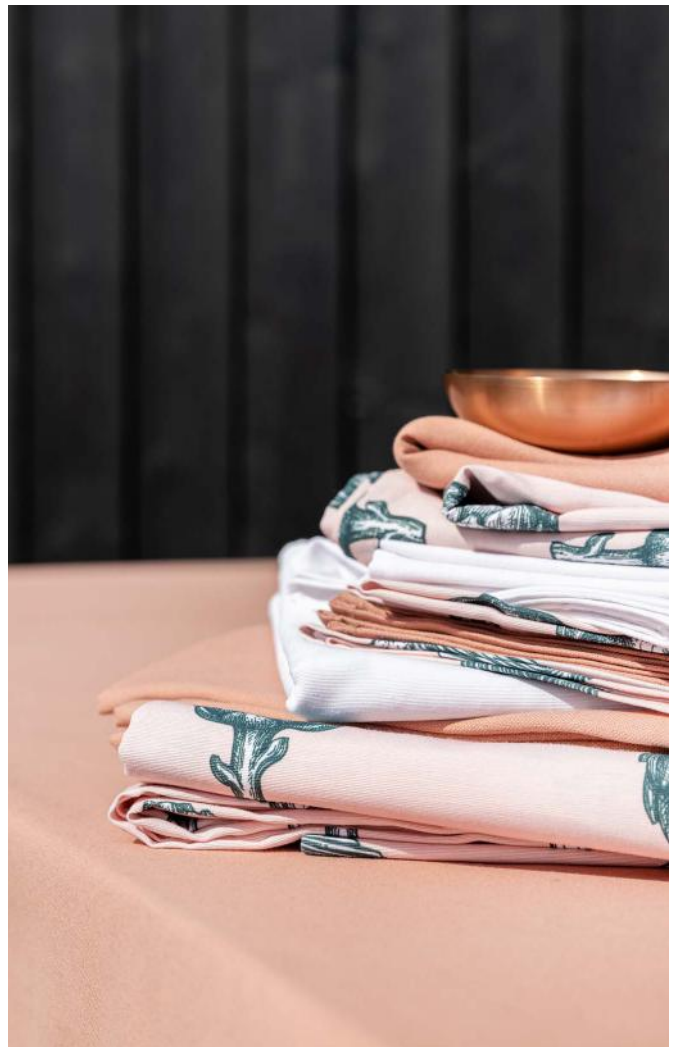






























Yoga

Yoga mats and poufs in stylish colours
to blend perfectly into your home.





crinkled plaids

Drape a crinkled plaid over your couch or bed
to add that extra touch.

Also great for a day outdoors as towel, scarf or blanket.
Multifunctionality at its best.





129 ·

new OUTDOOR cushions

Known design, improved sun & water resistibility.

BED - Satin.....

Satin is luxurious and high quality. Its best characteristic is its **silky-soft feeling**.



BARENT multipastel



DANDELION grey



CITY STRIPE grey-yellow



SHIBORI lilac-beige &
SHIBORI ALLOVER lilac-beige

BED - Renforcé.....

Renforcé cotton is pure, natural and sleeps comfortably **all year round**. Cotton is a strong and light material.



BOTTERSTRIPE blue-sienna



MON JARDIN green



FACES chocolate-pink

• 130

BED - Recycled Renforcé.....

100% cotton, of which 30% recycled fibres.

All the benefits of cotton, manufactured with less waste, water usage and CO2 emissions.



AGADIR NEGATIVE green &
AGADIR POSITIVE green



ALU BIG grey-yellow



CASSAN blue-orange

BED - Ecovero

A blend of 50% cotton and 50% viscose. Feels supersoft and **saves water** in the production process. More info, scan QR:



BAFFIN celadon-salmon



JARDINIER green-pink



BROKEN VICHY grey-yellow



LENZING
EcoVero™

BED - Washed cotton

Washed cotton is soft and has a **relaxing feel**. It has a washed crinkle effect which gives the fabric a natural look.



HYPE grey-beige



BRISTOL blue stone



UNI yellow



UNI botanical green

Other available



UNI colours: white - sand - milky pink - pink - light grey - milky grey - milky celadon - celadon - jeans - blue - dark grey

BED - Satin Stripe

Enjoy **hotel luxury** at home with silky-soft satin bedding.



UNI white

Other available UNI colours :



BED - Percale

Thinly woven cotton bed linen with a **matte finish**.



UNI pink blush

Other available UNI colours :



TABLE - Uniline

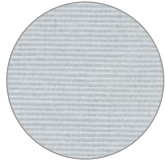
Our UNILINE fabrics are available for table linen and deco cushions.

More prints and UNI colours available.

70% cotton - 30% polyester.



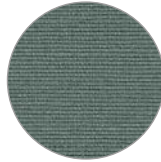
white



misty blue



celadon



botanical green



dark grey



yellow ochre



pearl pink



terracotta



caramel



porto

TABLE - LE15

The LE15 collection is a recycled cotton-polyester blend available in multiple prints.

72% cotton - 28% polyester.



ARTICHOKE green-celadon



ARTICHOKE green-pink

• 132

TABLE - Retan

Retan is a mix of linen and recycled cotton, pre-washed. **86% cotton - 14% linen.**



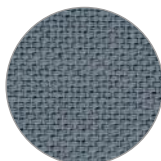
terracotta



ivory



mint



graphite



TABLE - Sogo

Sogo is 94% recycled, it's made from pre- and post-consumer waste.

70% cotton - 30% polyester.



white



rose



grey



fossil sand



madder red



botanical green



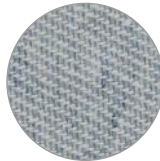
beluga grey



TABLE - Skinny

The Skinny table linen is made from 100% recycled denim. 1m = 1 pair of jeans. The green fabric is dyed blue, creating 'blue mist'.

98% cotton twill - 2% other fibres.



blue mist

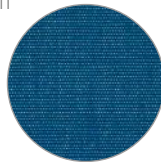


OUTDOOR

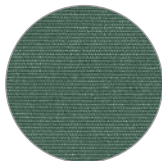
The outdoor fabrics are treated with eco-teflon for a sturdy, stain-resistant quality.

Specifically designed for outdoor use, they are resistant to sun and water.

80% acryl - 20% polyester.



TEJANO blue



TEJANO grey



LIDO black-white



BANANA taupe



PEVA Tablecloth

140x240cm - 10pcs/box - 70% PE - 30% EVA (front) 100% polypropene (back)



GATSBY STRIPE ochre-ecru



TORQUAY botanical



CONFETTI SHRED brick



TEXTURE sand

Chair cushion

40x40cm - 12pcs/box - 100% cotton (cover) - 100% polyester (filling)



CONFETTI SHRED ochre



Pine green



Brick dust



Obsidian

• 134

Crinkled cotton blanket

130x170cm - 8pcs/box - 100% cotton



Ochre



Obsidian



Iceberg green

Deco cushion

8pcs/box - 100% cotton (cover) - 100% polyester (filling)



ART LIP PRINT ecru
30x45cm



CORDUROY ZIG ZAG ochre
30x50cm

Deco cushion

45x45cm - 8pcs/box - 100% cotton (cover) - 100% polyester (filling)



LEVIS LIGHT black



LEVIS LIGHT dusty cedar



MESH ecru-black



FRINGES ecru

Yoga pouf.....

Ø30cm x h12cm - 6pcs/box

100% cotton (cover) - 100% buckwheat hulls (filling)



Brick dust



Wind chime

Yoga mat.....

60x180cm - 12pcs/box - 100% TPE



Brick dust



Wind chime

Picnic blanket.....

200x200cm - 6pcs/box

100% polyester fleece (front) - 70% PE - 30% EVA (back)



GATSBY STRIPE ochre-ecru



TORQUAY botanical

Beach mattress.....

60x180cm - 4pcs/box

100% cotton (cover)- 100% polyester (filling)



GATSBY STRIPE ochre-ecru (front)
ochre (back)



TORQUAY botanical (front)
pine green (back)

Shopping bag.....

55x40x15cm - 12pcs/box - 100% cotton



GATSBY STRIPE ochre-ecru



TORQUAY botanical

Pallet cushion.....

60x80x12cm - 4pcs/box 100% cotton (cover)- 100% cotton (filling)



GATSBY STRIPE ochre-ecru



Obsidian



Brick dust

behind the scenes



Special thanks to:

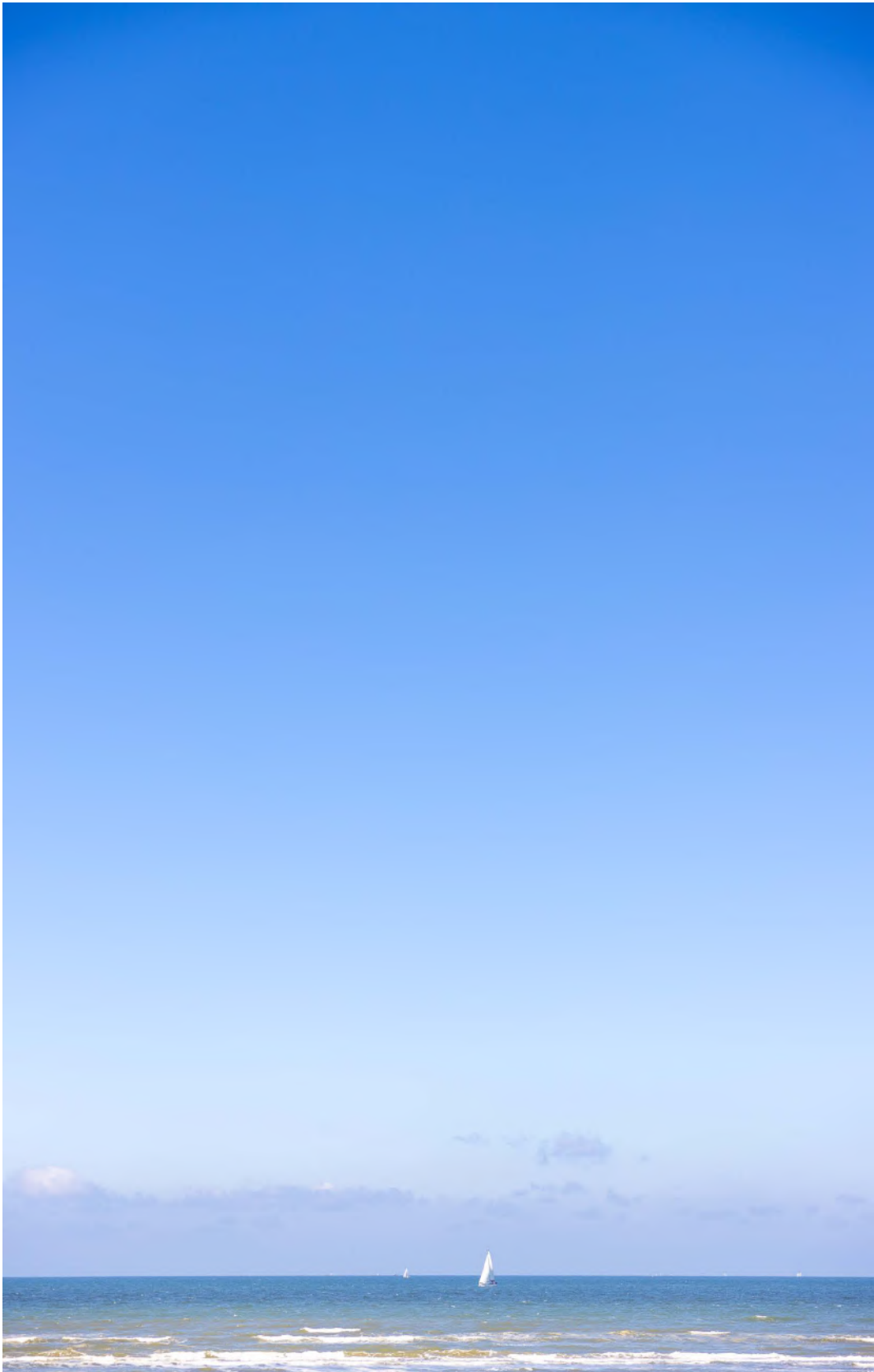
Stefanie Faveere - Photography

Eva Vandemeulebroucke - Model

Evelien De Keukeleire - Hair & make-up

Strandhus | Sea & dunes of Oostduinkerke - Photo location





#mymistralhome



MISTRAL HOME NV
IZ De Prijkels - Karreweg 15 - 9810 Nazareth - Belgium
T +32 (0)9 381 60 19 - F +32 (0)9 381 60 11
WWW. MISTRALHOME.COM

first printed in 2021

DESIGNED IN BELGIUM

