

GET SMART

THE CONNECTED SHOP



Smart Water Leak Sensor
USER MANUAL

Welcome to the Smart Water Leak Sensor User Manual. Your easy, step-by-step guide to set up and connect your Smart Water Leak Sensor. The device is designed to be convenient and user-friendly for everyone.



SUMMARY

I. Device Set Up



1. Set-up Guide
 - a) Set-up Video

II. Device Functions



2. Remote Functions
 - a) Activate Device

III. Mobile App Connection



3. Registering on the Mobile App
 - a) Downloading the Mobile App
 - b) Adding Devices

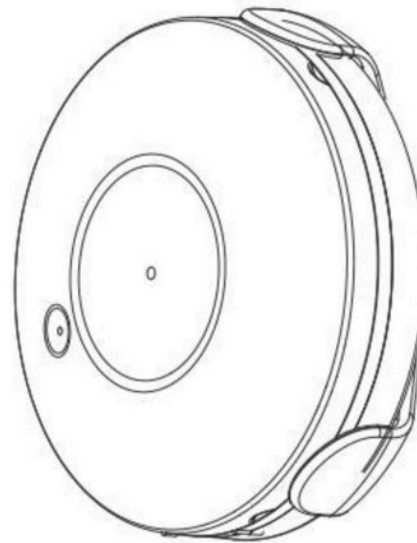
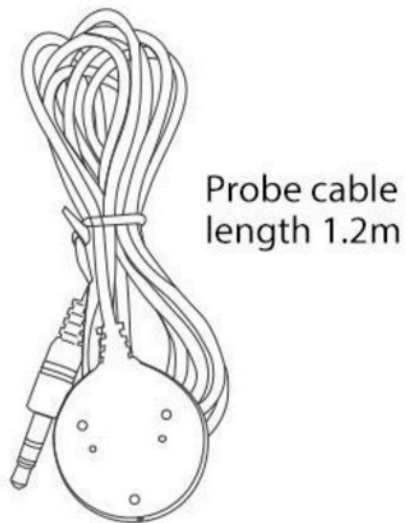
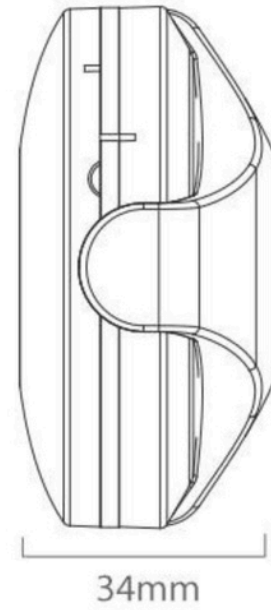
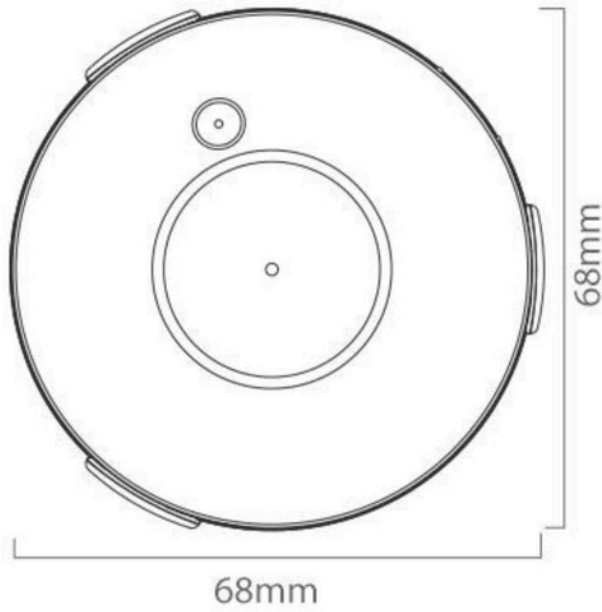
PACKAGING DETAILS



1 Smart Water Leak Sensor

2 Probing Cable

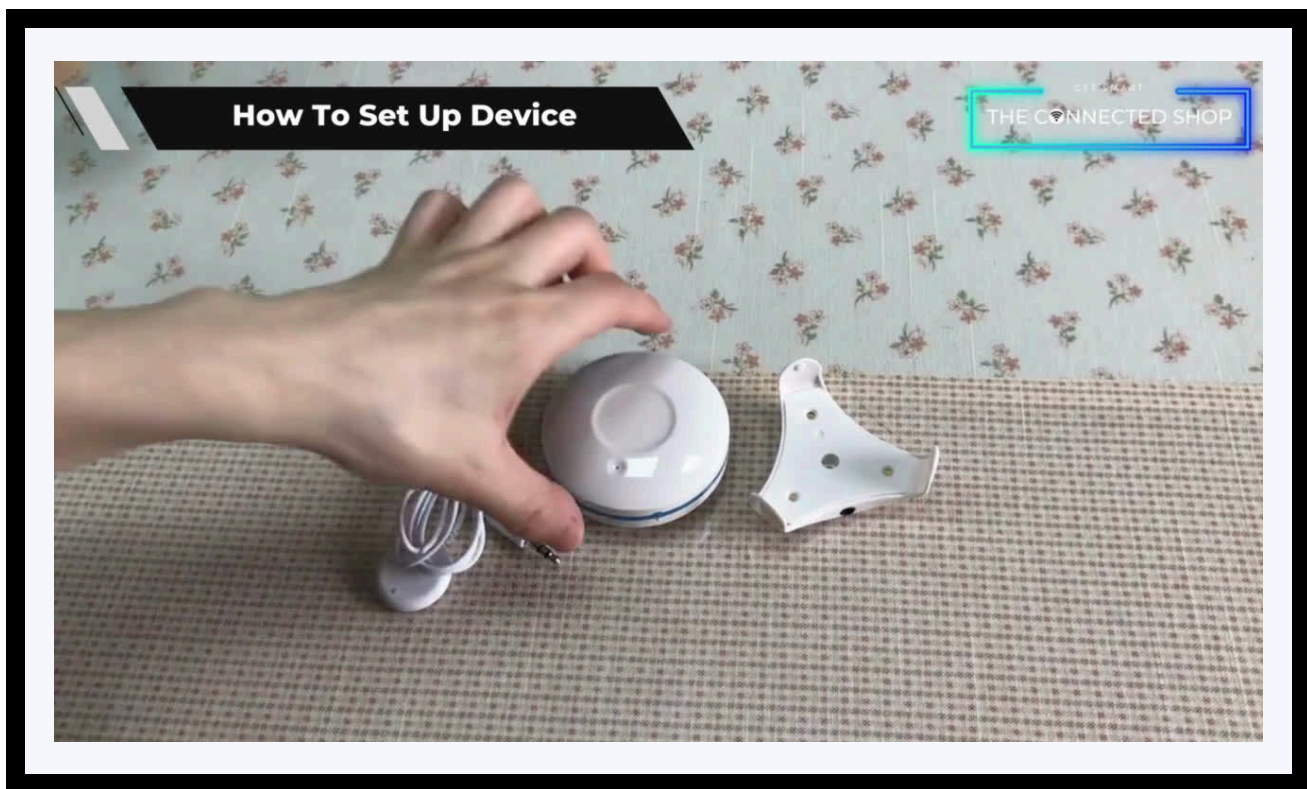
STEP-BY-STEP SET-UP GUIDE



1. SET UP



- a. Remove all items from its original box
- b. Open the battery compartment found on the device and insert one (1) CR2 battery
- d. Proceed to the following videos and steps on how to set up the device via the mobile app
- e. Make sure to test the sensor afterwards



2. FUNCTIONS



a) Activate Device

- The device will automatically activate or its alarm will go off upon contact with water
- It will also notify you on your mobile phone
- To manage it, go to the mobile app and select the device
- You will be able to view historical records and manage its settings



3. MOBILE APP CONNECTION



a) Downloading the App

Download the application on the Google Play Store or Apple AppStore by searching “Tuya Smart” or by scanning the QR code below

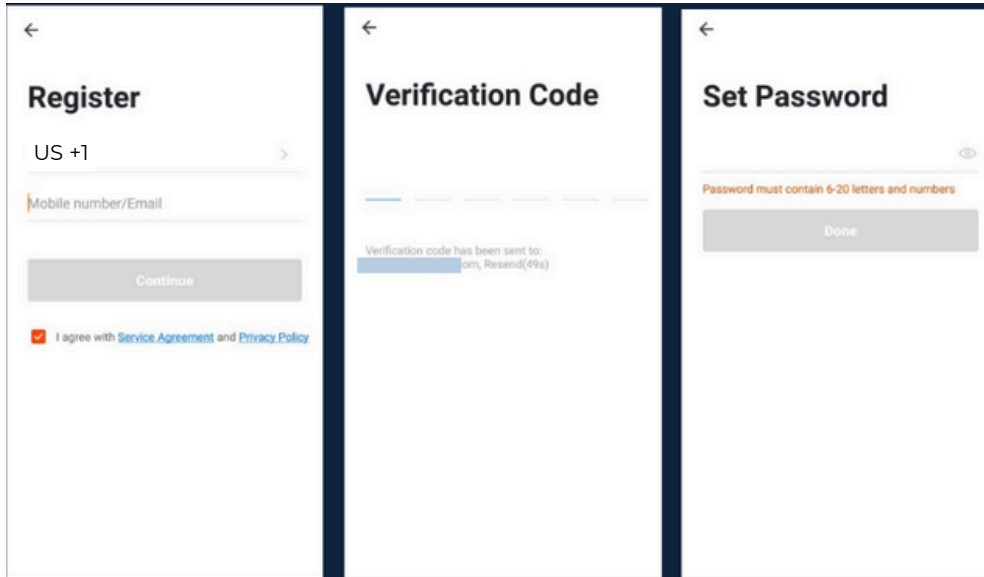


b) Logging in and Registering

After Downloading the App

- Select the country from which you will be using the device, usually the app will prompt it automatically
- You will be redirected to register via email where a verification code will be sent and proceed to enter it on the app in the allotted time limit
- Once the verification code has been entered into the app, you will be asked to set your password
- You will then have full access to the Tuya Smart Platform

3. MOBILE APP CONNECTION

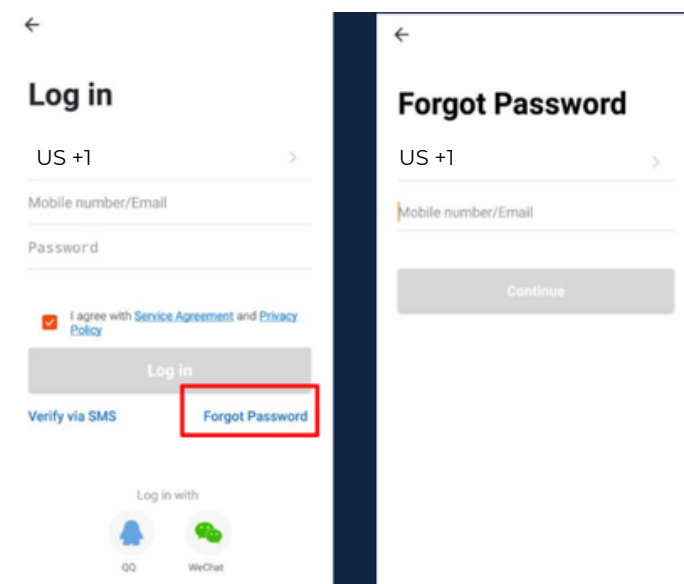


Should you be an existing user to the Tuya Smart Platform, log in using your email and password from the login page.

c) Resetting your Password

In case you have forgotten your password and need to reset it, please follow the steps below:

- On the Login Page, when prompted for your email & password, click “Forgot Password” button located below the “Login” button
- Select the country from which you will be using the device, usually the app will prompt it automatically



3. MOBILE APP CONNECTION



Verification Code

Verification code has been sent to: 86-15219500857,
Resend(57s)

Set Password

Password must contain 6-20 letters and numbers

Done

- You will be prompted to enter the email where a verification code will be sent and proceed to enter it on the app in the allotted time limit
- Once the verification code has been entered into the app, you will be asked to set your new password
- You will then have full access to the Tuya Smart Platform

In the case that you would like to change your password from the app, please follow the steps below:

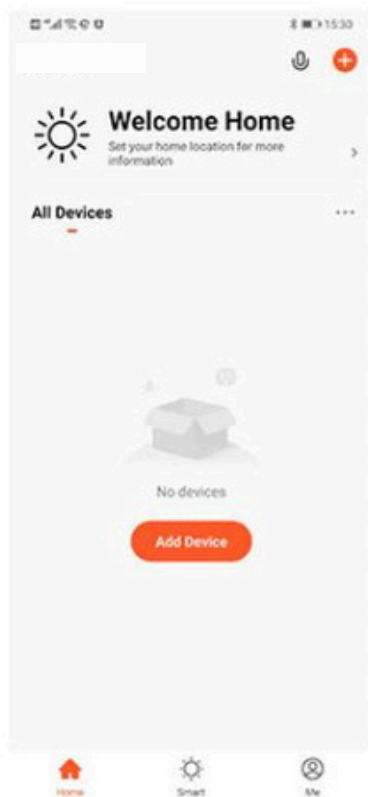
- Tap the 'Me' tab on the bottom right hand corner of your screen
- Click 'Change Login Password'
- You will be taken to the 'Account Verification' page and then tap 'Get Verification Code' button
- This will send a verification to your registered email
- Enter the code in the app
- Proceed to enter the new password

3. MOBILE APP CONNECTION

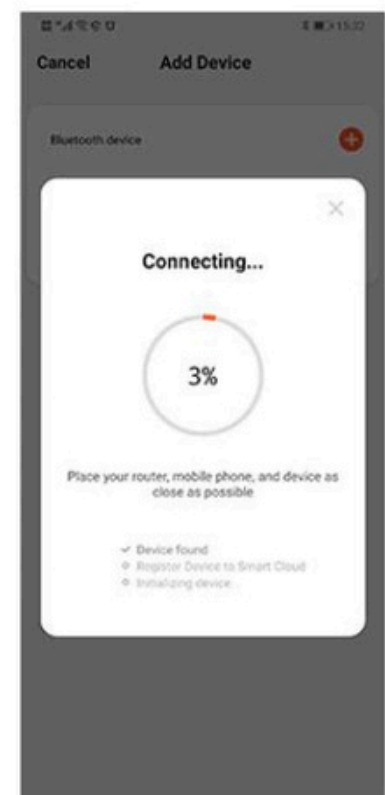


d) Adding Devices

To add devices on the app, please follow the instructions below. Your devices and phone must be connected to the same 2.4 GHz Wi-Fi network in order for this to work.



- To add a device, click the 'Add Device' or tap the 'Plus' button on the top-right corner of your screen and select 'Add Device'
- Enable Bluetooth and phone location to proceed
- The app will automatically detect a nearby device. Select it when it pops up on the screen



- Wait for the app to finish searching for the device
- Finish adding your device. Once this has been done successfully, you can go on to change the name of your device and control its functions

Congratulations!

You have successfully set up your very own Smart Water Leak Sensor.

Thank you for being a valued customer of The Connected Shop.

www.theconnectedshop.com





THE CONNECTED SHOP