

ADIMPEX S.r.l.

Via Adriatica n. 17/C
60022 Castelfidardo (AN) - Italy

071.721091

info@adimpex.it

www.adimpex.it

La nostra storia

Componenti elettronici dal 1978

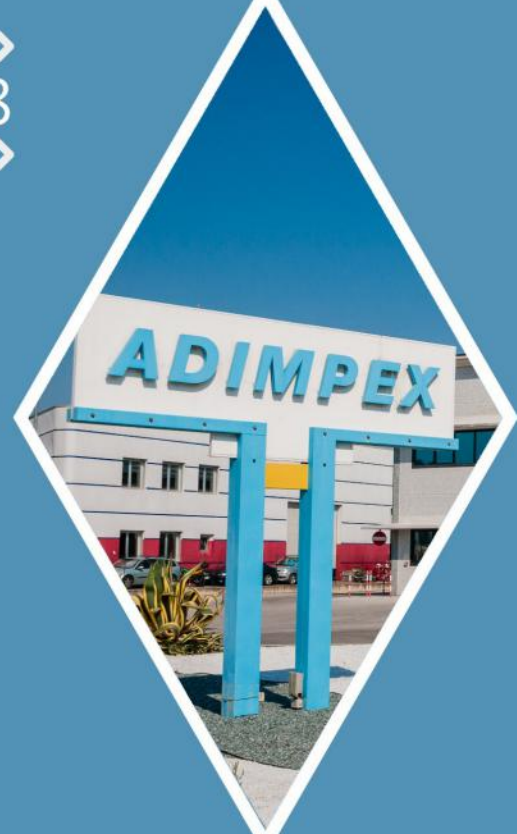
Adimpex S.r.l. nasce nel 1978 come società operante in ambito regionale nella distribuzione di componenti elettronici, passivi ed elettromeccanici.

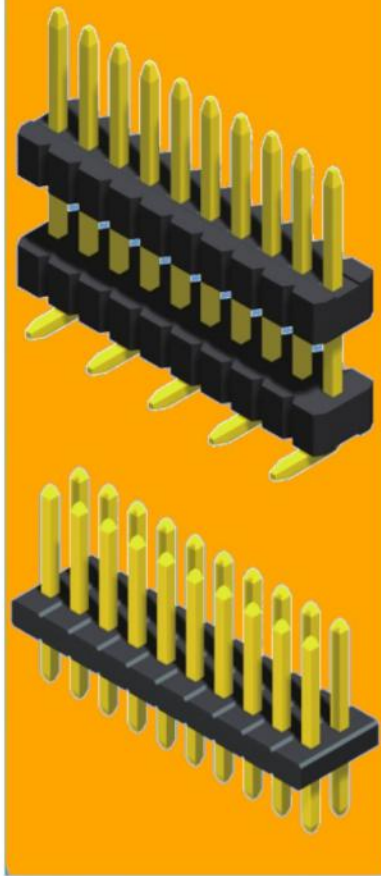
Nel corso degli anni, grazie alla competenza e conoscenza del mercato acquisite, ha notevolmente ampliato la gamma dei prodotti, stringendo partnership con più di 40 fornitori ed arrivando a servire la totalità del territorio nazionale con un'efficiente rete di vendita.

Lo stabilimento occupa una superficie di oltre 4.000mq dei quali vasta parte è adibita a magazzino, che conta oltre 20.000 articoli diversi.

Adimpex da sempre rivolge una particolare attenzione alla qualità del servizio offerto e alla disponibilità di materiale a stock, avendo cura di supportare i clienti in ogni fase del processo con impegno e professionalità, e da oltre 15 anni rendendo sempre disponibili tutte le informazioni sui prodotti e le principali funzioni ai clienti tramite i servizi online.

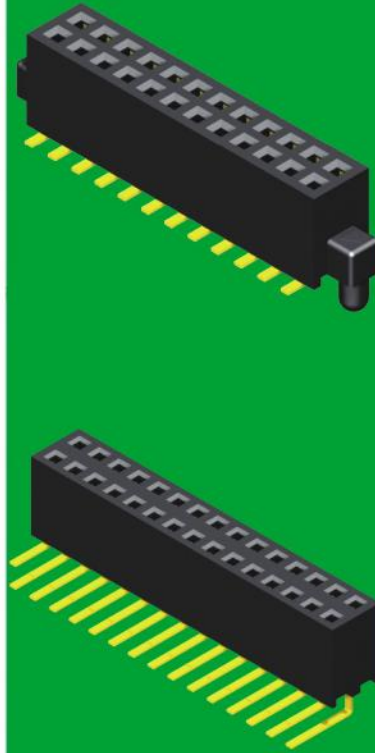
Grazie al suo spirito innovativo e intraprendente, unito alla solidità ed esperienza nel settore, da oltre 40 anni garantisce la piena qualità del servizio a clienti e fornitori.





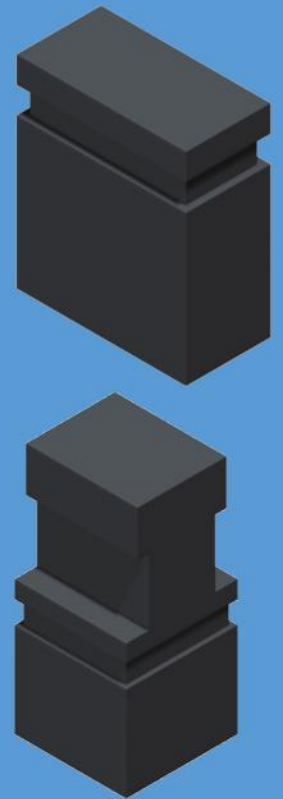
**Connettori
maschio
per C.S.
Passo:
1,27x1,27mm**

PAG. 6



**Connettori
femmina
per C.S.
Passo:
1,27x1,27mm**

PAG. 10

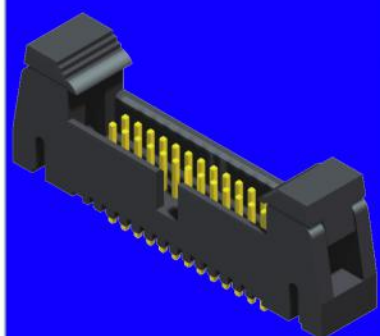
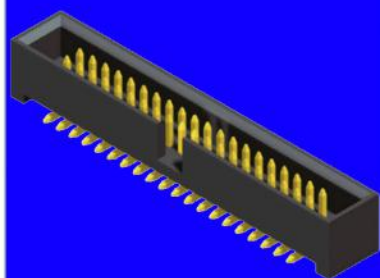


**Minijumpers/
ponticelli**

PAG. 15

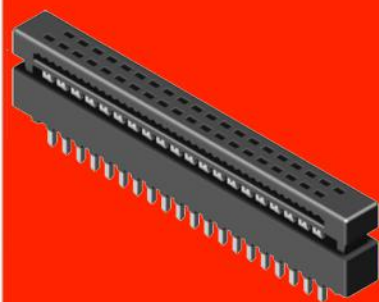
INDICE DEI CONTENUTI





**Connettori
IDC maschio
Passo:
1,27x1,27mm**

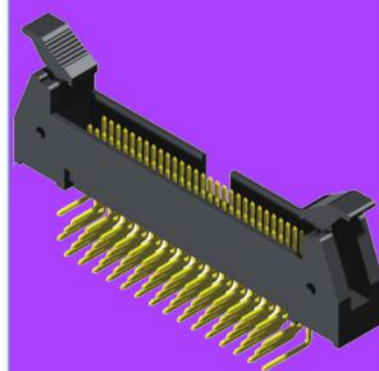
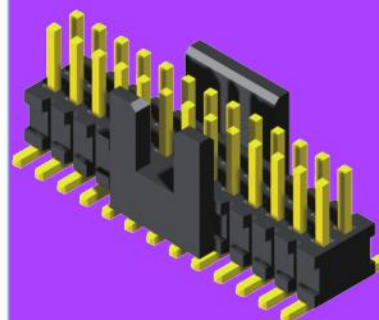
PAG. 16



**Connettori DIP
PLUG**

**Passo:
1,27x1,27mm**

PAG. 18



**Altre serie
fornibili su
richiesta**

PAG. 19

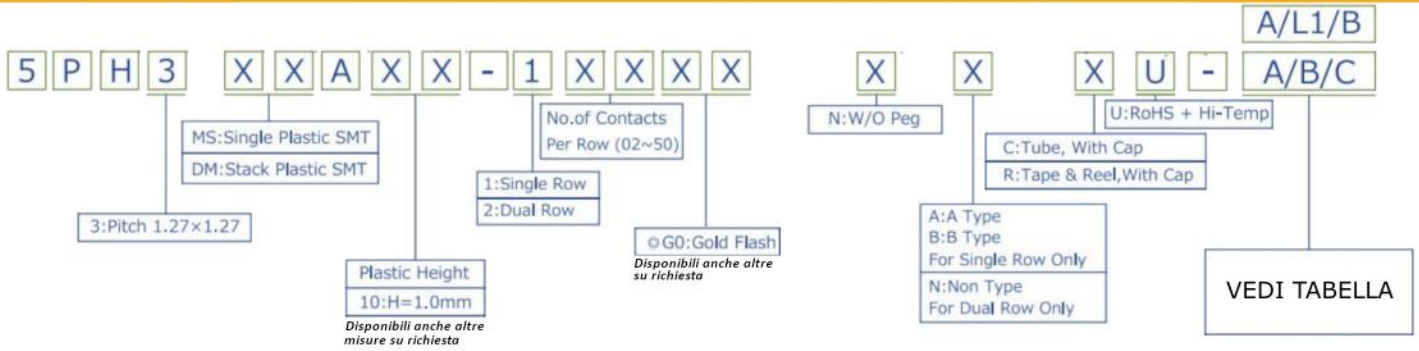
INDICE / CONTENT INDEX



Connettori Maschio per C.S. passo 1.27x1.27mm

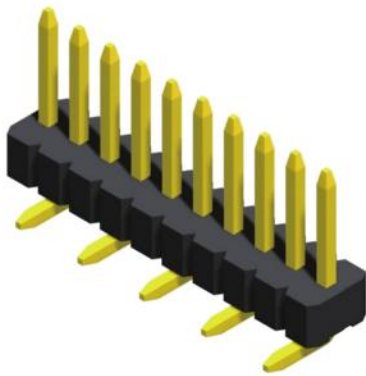
CARATTERISTICHE:

- Corrente nominale: 1 A
- Resistenza d'isolamento: 1000 MΩ Min.
- Resistenza di contatto: 20 MΩ Max.
- Rigidità dielettrica: 500V AC per 1 minuto
- Temperatura di lavoro: -40°C ÷ +105°C

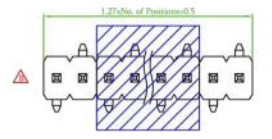
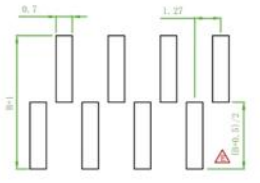
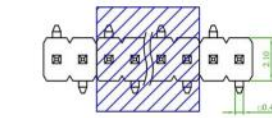
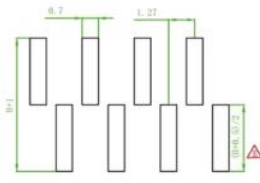


⊙: Standard Recommend
Tube package is not available for under 1*5 & 2*5 pin counts

+ SMD maschio singola fila dritto

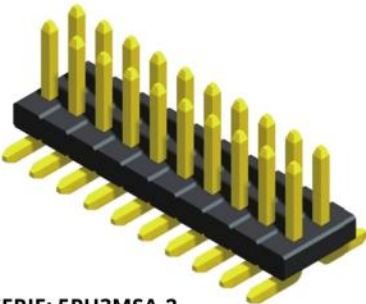


SERIE: 5PH3MSA-1

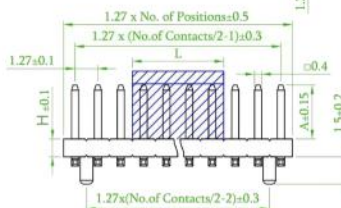
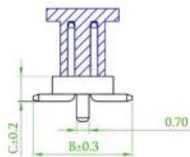
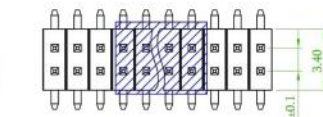
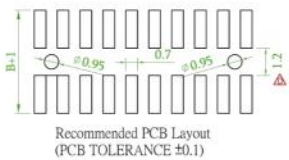


DIMENSIONI	
A	B
4mm	5mm

+ SMD maschio doppia fila dritto

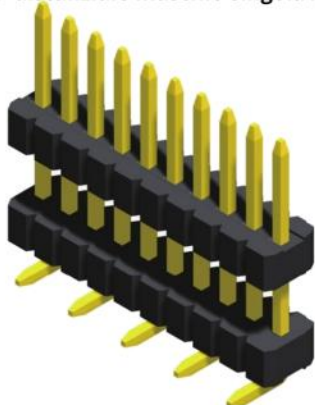


SERIE: 5PH3MSA-2

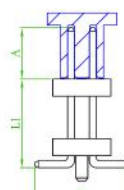
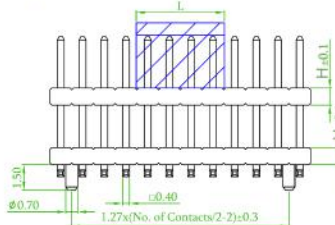
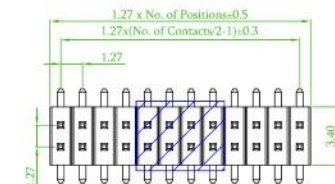
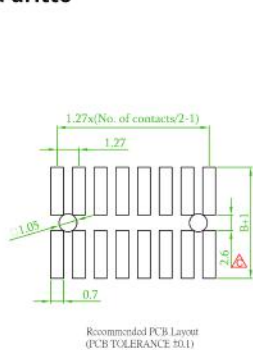


DIMENSIONI	
A	B
4mm	5,5mm

+ SMD distanziale maschio singola fila dritto



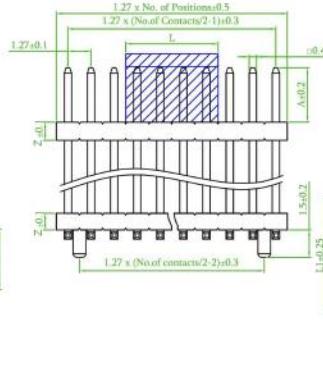
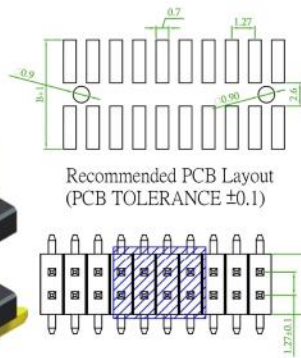
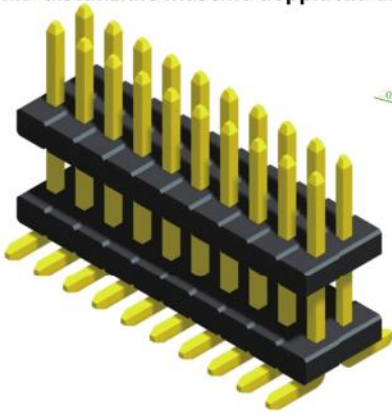
SERIE: 5PH3DMA-1



DIMENSIONI		
A	L1	B
4mm	4mm	5mm
	5mm	
	6mm	
	8mm	
	10mm	

Disponibili anche altre misure su richiesta

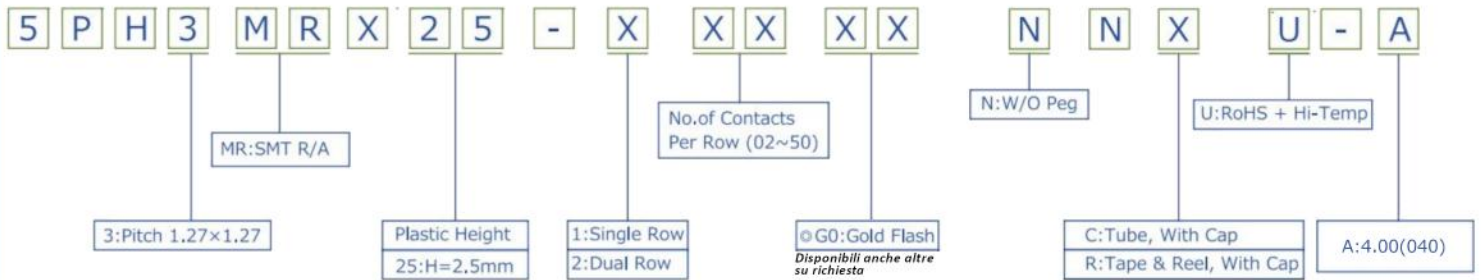
+ SMD distanziale maschio doppia fila dritto



DIMENSIONI		
A	L1	B
4mm	4mm	5,5mm
	5mm	
	6mm	
	8mm	
	10mm	

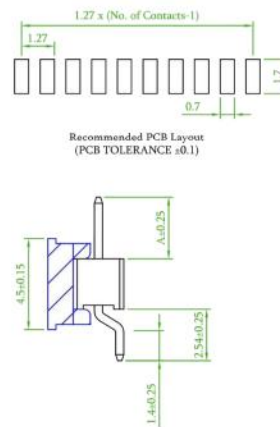
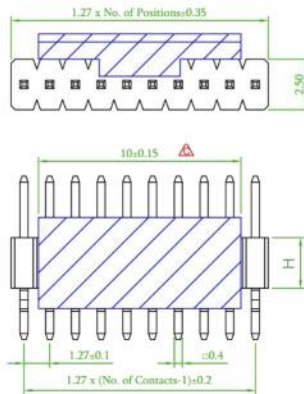
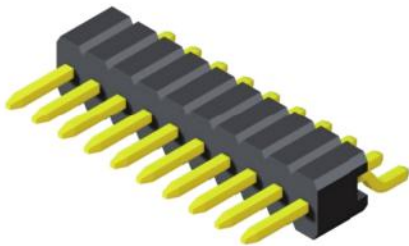
Disponibili anche altre misure su richiesta

SERIE: 5PH3DMA-2



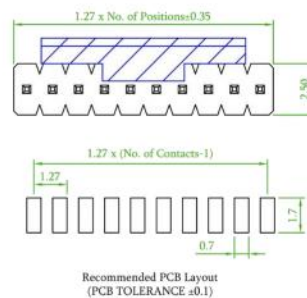
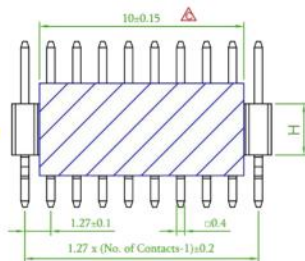
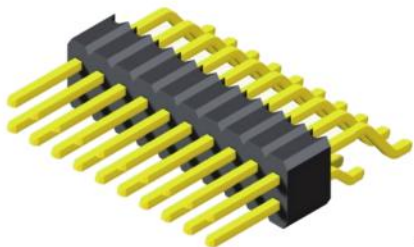
⊙: Standard Recommend
Tube package is not available for under 1*5 & 2*5 pin counts

+ SMD maschio singola fila 90°

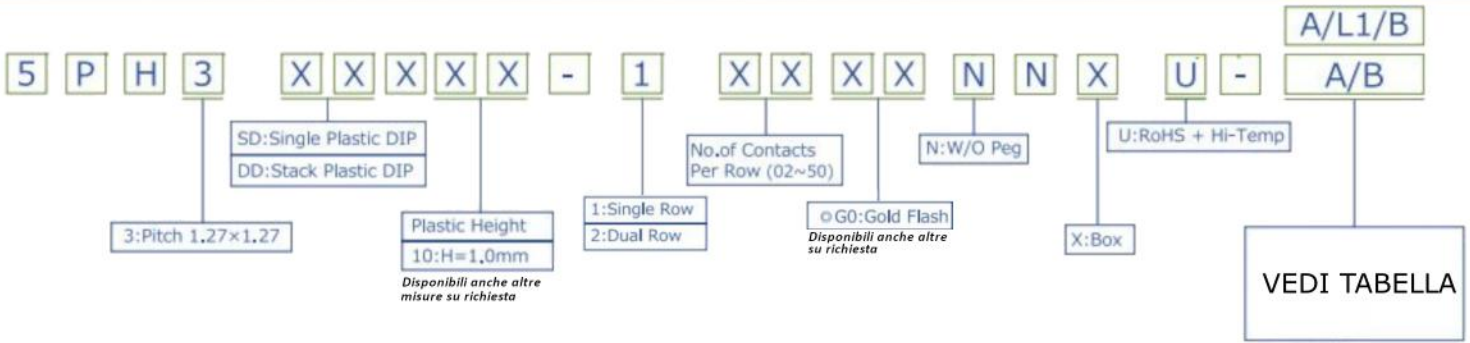


SERIE: 5PH3MRA-1

+ SMD maschio doppia fila 90°

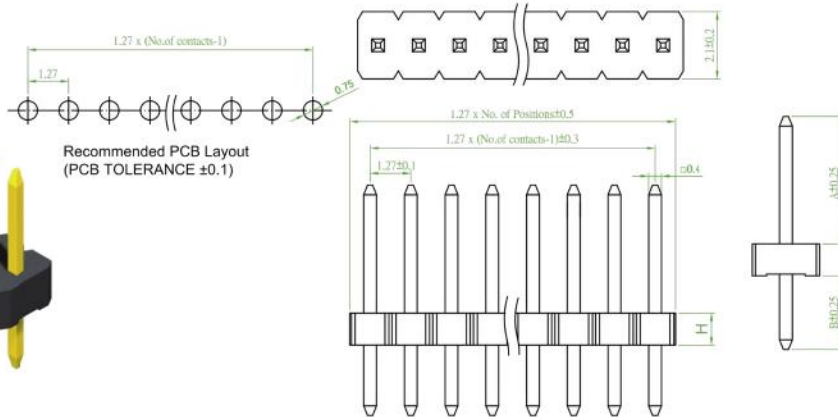
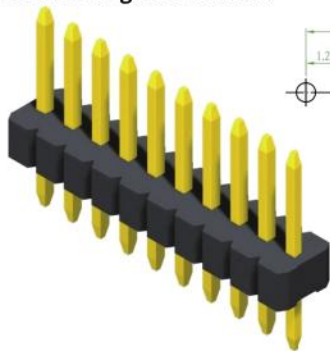


SERIE: 5PH3MRA-2



⊙: Standard Recommend
Tube package is not available for under 1*5 & 2*5 pin counts

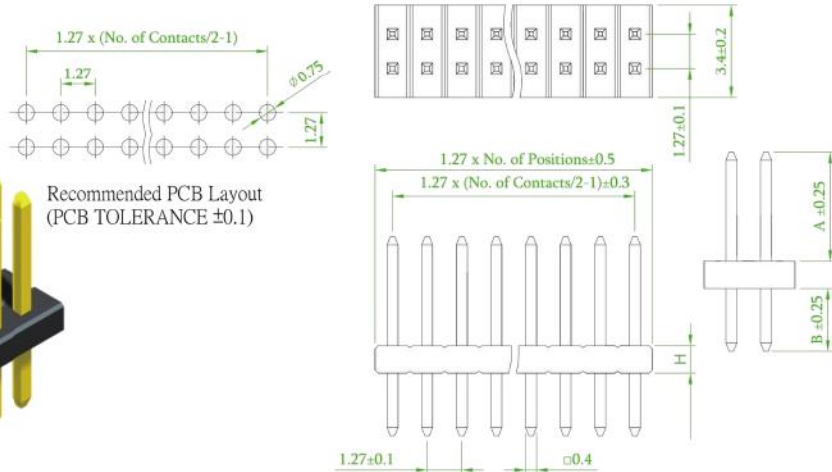
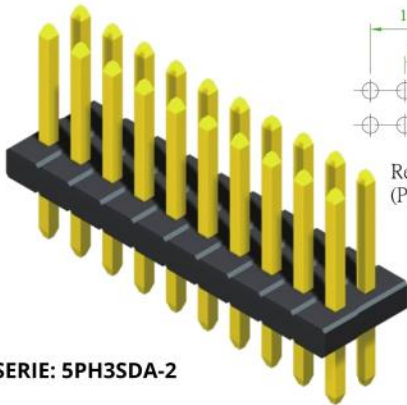
+ PTH maschio singola fila dritto



DIMENSIONI	
A	B
4mm	2,3mm

SERIE: 5PH3SDA-1

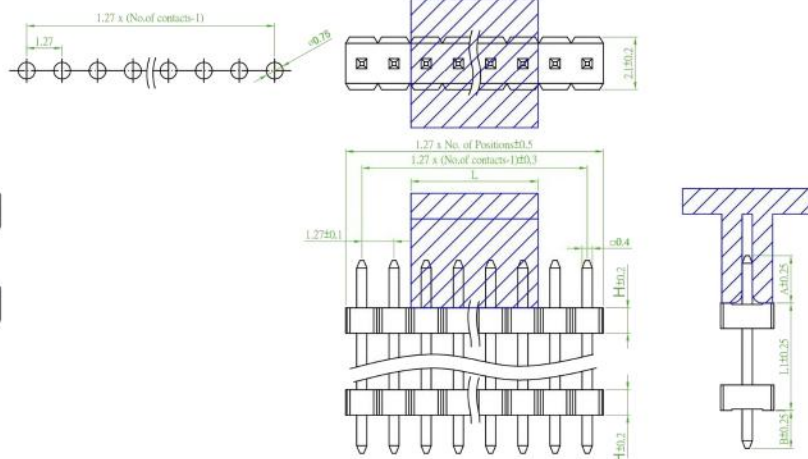
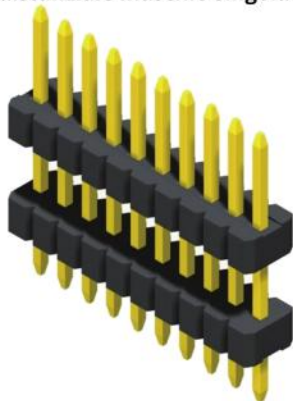
+ PTH maschio doppia fila dritto



DIMENSIONI	
A	B
4mm	2,3mm

SERIE: 5PH3SDA-2

+ PTH distanziale maschio singola fila dritto

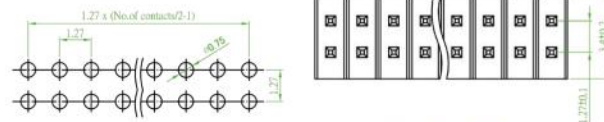
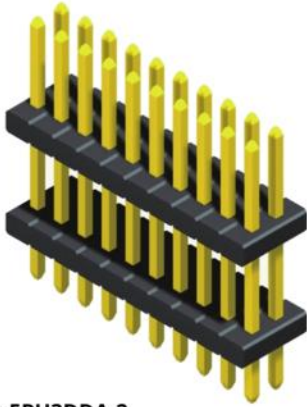


DIMENSIONI		
A	L1	B
4mm	4mm	2.3mm
	5mm	
	6mm	
	8mm	
	10mm	

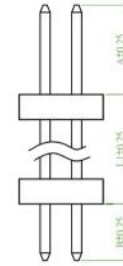
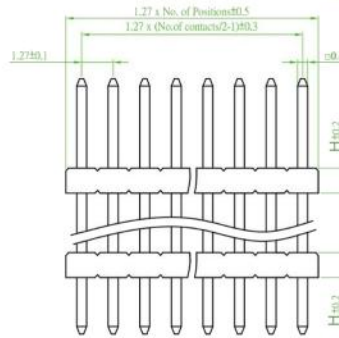
Disponibili anche altre misure su richiesta

SERIE: 5PH3DDA-1

+ PTH distanziale maschio doppia fila dritto



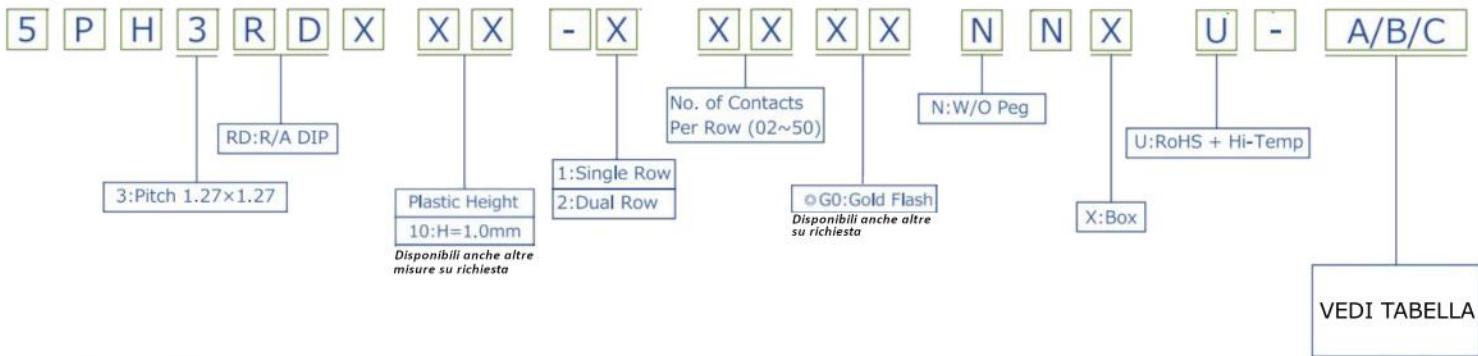
Recommended PCB Layout
(PCB TOLERANCE ± 0.1)



DIMENSIONI		
A	L1	B
4mm	4mm 5mm 6mm 8mm 10mm	2.3mm

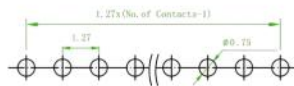
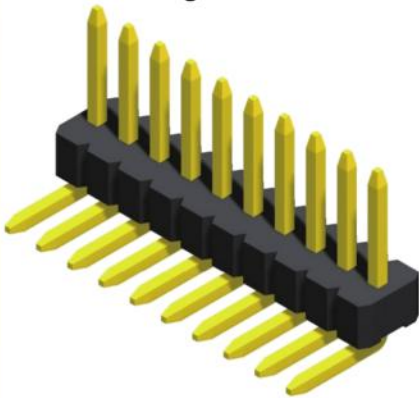
Disponibili anche altre misure su richiesta

SERIE: 5PH3DDA-2

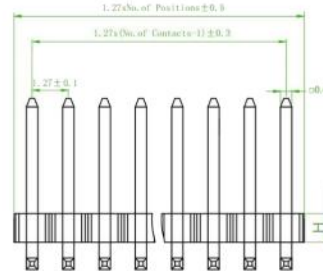
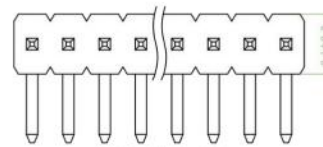


ϕ : Standard Recommend
Tube package is not available for under 1*5 & 2*5 pin counts

+ PTH maschio singola fila 90°



Recommended PCB Layout
(PCB TOLERANCE ± 0.1)

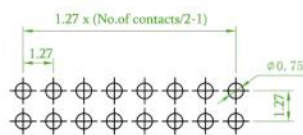
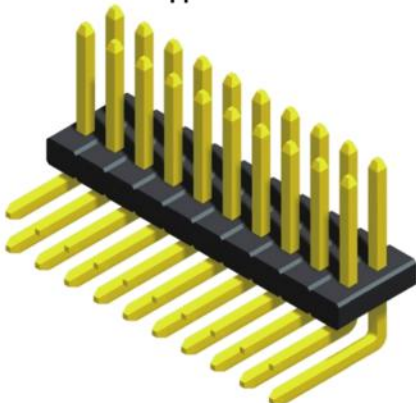


DIMENSIONI		
A	B	C
4mm	2.4mm	1.5mm

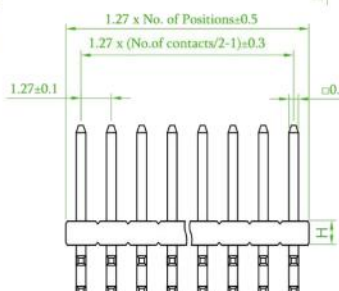
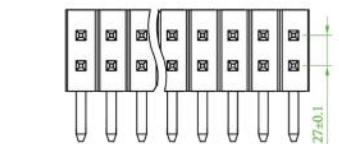
Disponibili anche altre misure su richiesta

SERIE: 5PH3RDA-1

+ PTH maschio doppia fila 90°



Recommended PCB Layout
(PCB TOLERANCE ± 0.1)



DIMENSIONI		
A	B	C
4mm	2.4mm	1.5mm

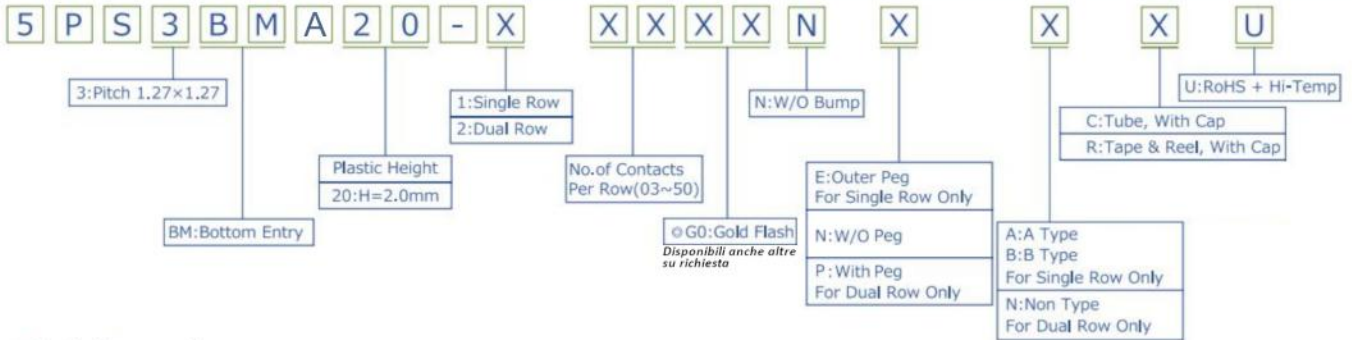
Disponibili anche altre misure su richiesta

SERIE: 5PH3RDA-2

Connettori per C.S. passo 1.27x1.27mm

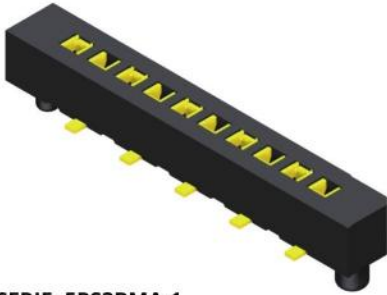
CARATTERISTICHE:

- Corrente nominale: 1 A
- Resistenza d'isolamento: 1000 MΩ Min.
- Resistenza di contatto: 20 MΩ Max.
- Rigidità dielettrica: 500V AC per 1 minuto
- Temperatura di lavoro: -40°C ÷ +105°C

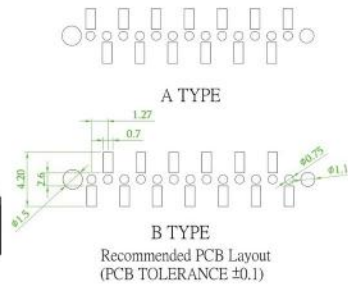


⊙: Standard Recommend
 Tube package is not available for under 1*5 & 2*5 pin counts

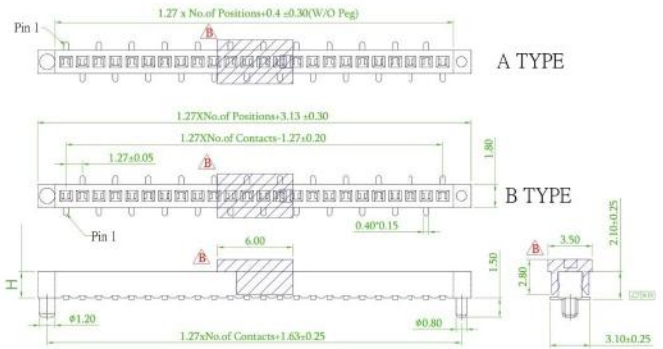
+ SMD femmina singola fila dritto BOTTOM ENTRY



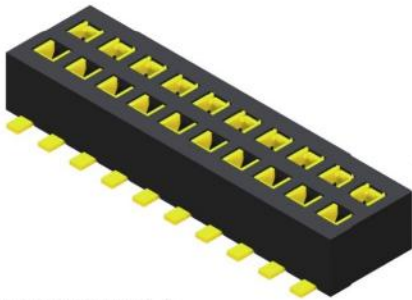
SERIE: 5PS3BMA-1



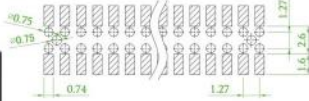
Recommended PCB Layout
(PCB TOLERANCE ±0.1)



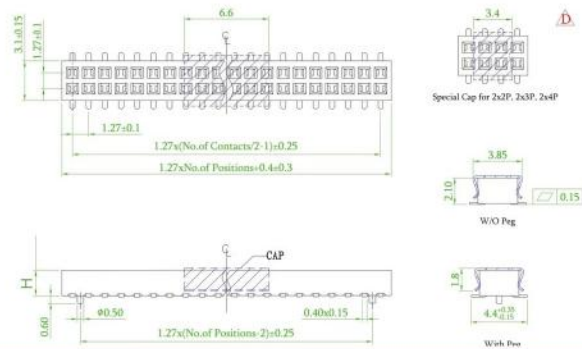
+ SMD femmina doppia fila dritto BOTTOM ENTRY



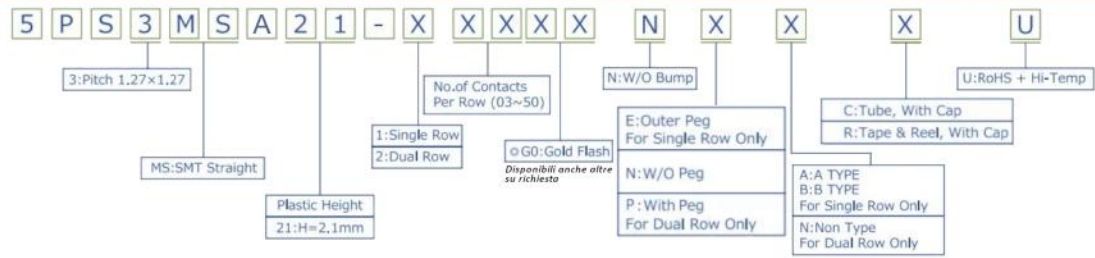
SERIE: 5PS3BMA-2



Recommended PCB Layout
(PCB TOLERANCE ±0.1)

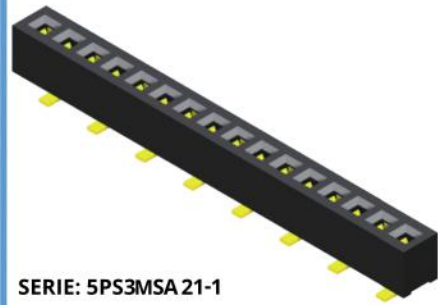


NOTE/NOTES

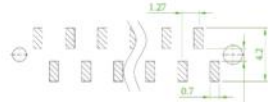


Standard Recommend
Tube package is not available for under 1*5 & 2*5 pin counts

+ SMD femmina singola fila dritto



SERIE: 5PS3MSA21-1

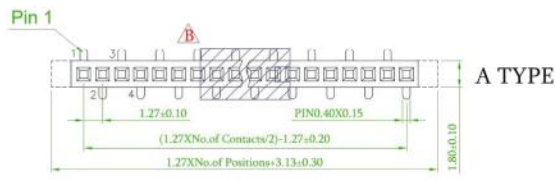


A TYPE

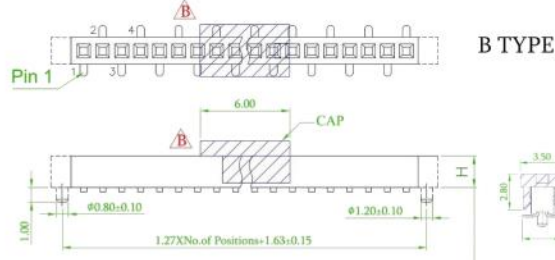


B TYPE

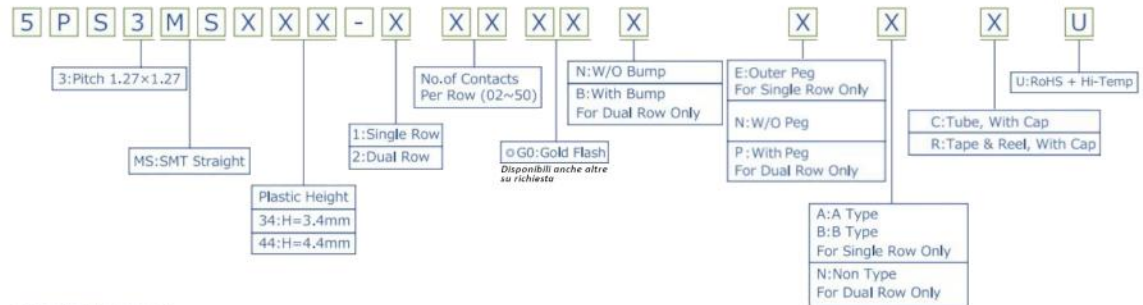
Recommended PCB Layout
(PCB TOLERANCE ±0.1)



A TYPE

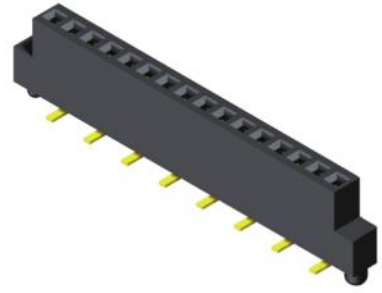


B TYPE

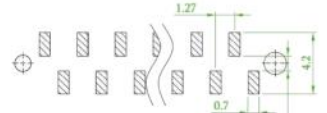


Standard Recommend
Tube package is not available for under 1*5 & 2*5 pin counts

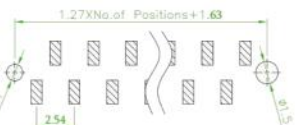
+ SMD femmina singola fila dritto



SERIE: 5PS3MSA-1

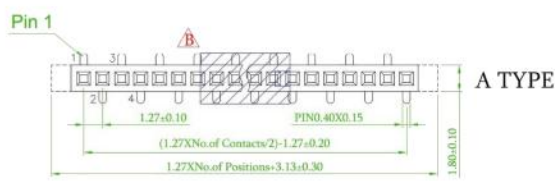


A TYPE

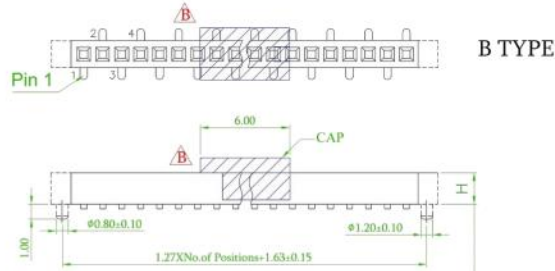


B TYPE

Recommended PCB Layout
(PCB TOLERANCE ±0.1)

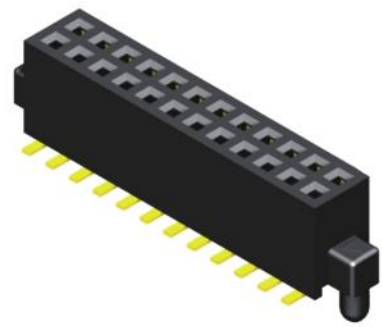


A TYPE



B TYPE

+ SMD femmina doppia fila dritto



SERIE: 5PS3MSA-2

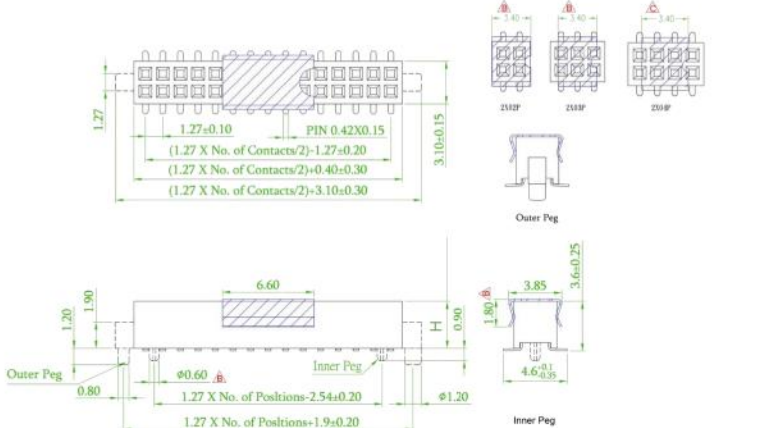


Inner Peg



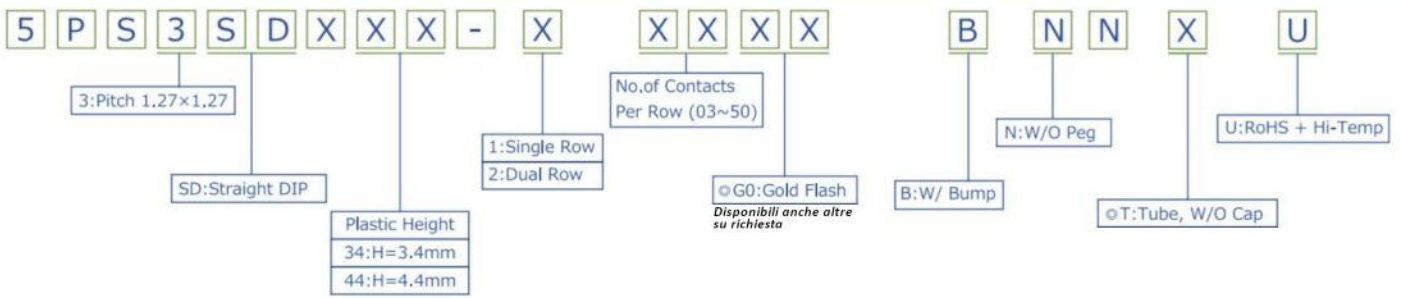
Outer Peg

Recommended PCB Layout
(PCB TOLERANCE ±0.1)



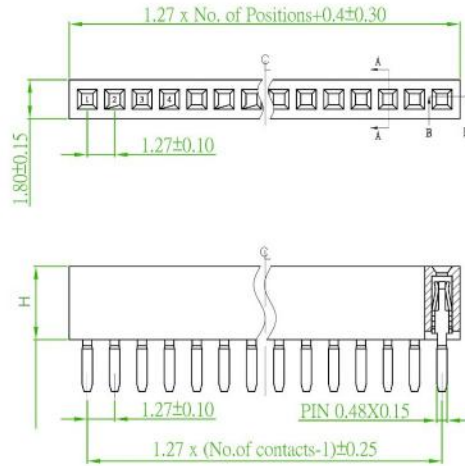
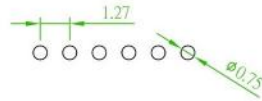
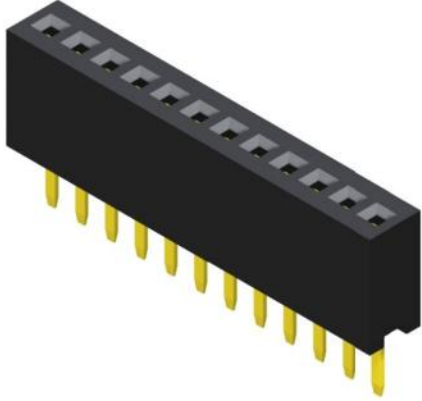
Outer Peg

Inner Peg



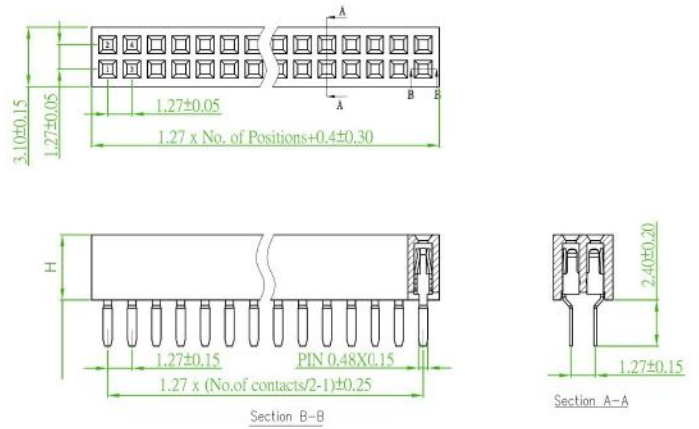
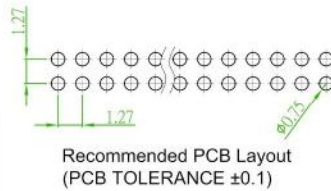
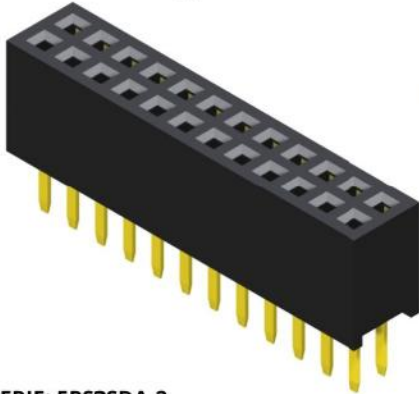
o: Standard Recommend
Tube package is not available for under 1*5 & 2*5 pin counts

+ PTH femmina singola fila dritto



SERIE: 5PS3SDA-1

+ PTH femmina doppia fila dritto



SERIE: 5PS3SDA-2

NOTE/NOTES

.....

.....

.....

.....

.....

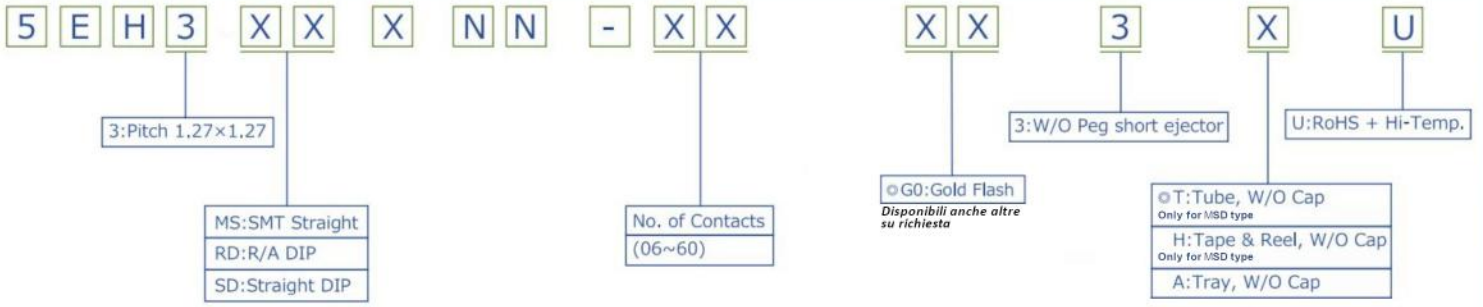
.....

.....

.....

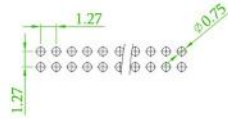
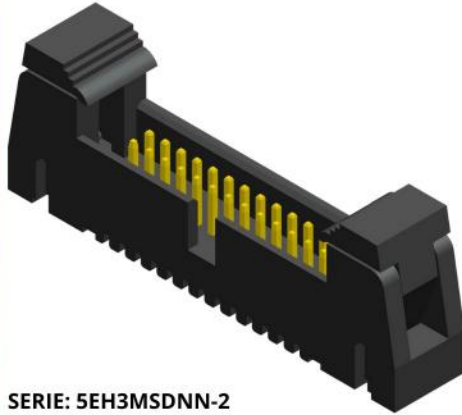
.....

.....



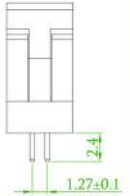
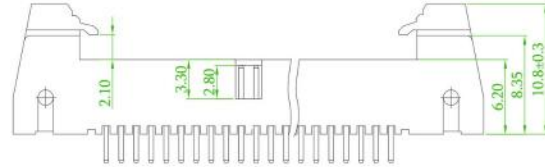
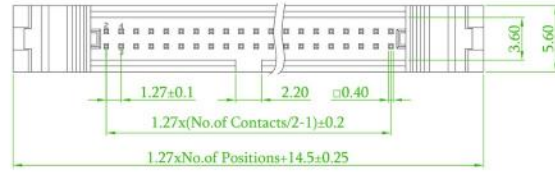
Standard Recommend
Tube package is not available for under 1*5 & 2*5 pin counts

+ SMD maschio doppia fila dritto

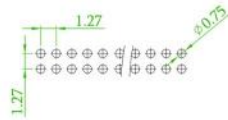
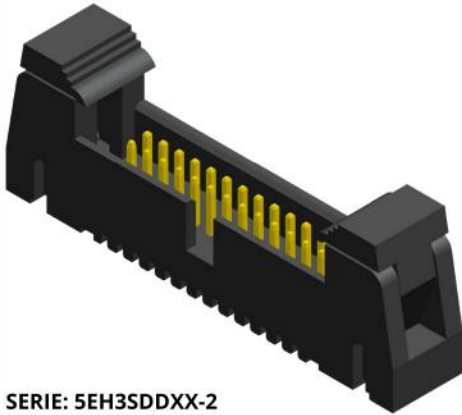


Recommended PCB Layout
(PCB TOLERANCE ±0.1)

SERIE: 5EH3MSDNN-2

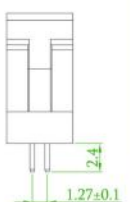
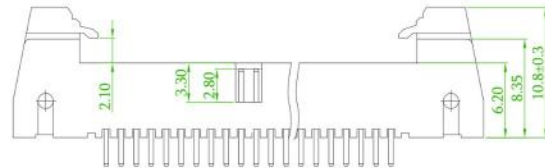
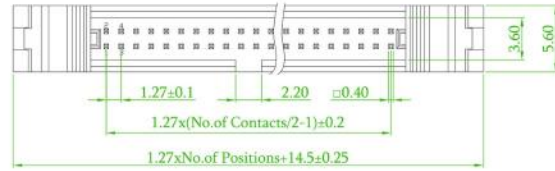


+ PTH maschio doppia fila dritto

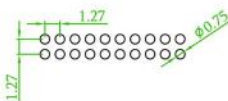
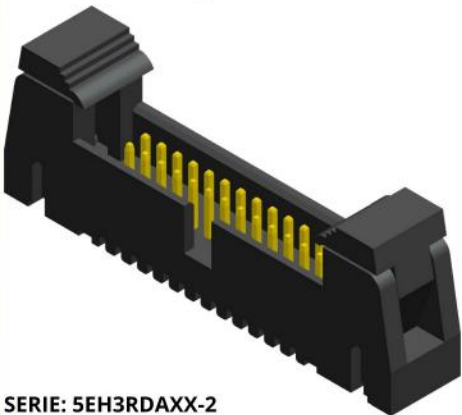


Recommended PCB Layout
(PCB TOLERANCE ±0.1)

SERIE: 5EH3SDDXX-2

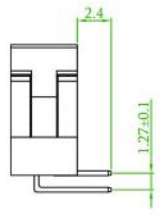
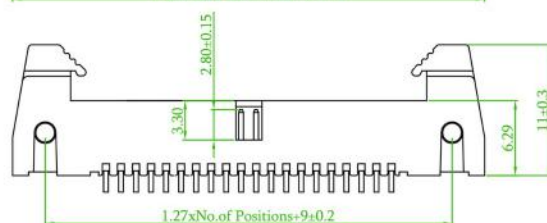
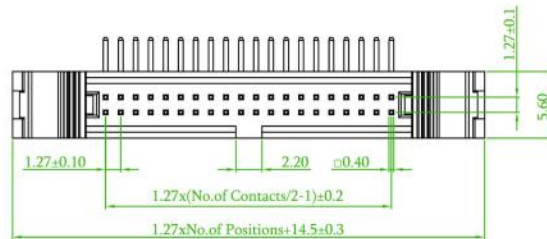


+ PTH maschio doppia fila 90°



Recommended PCB Layout
(PCB TOLERANCE ±0.1)

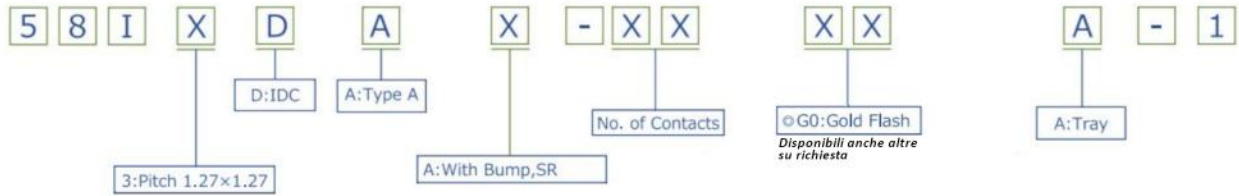
SERIE: 5EH3RDAXX-2



Connettori DIP PLUG passo 1.27x1.27mm

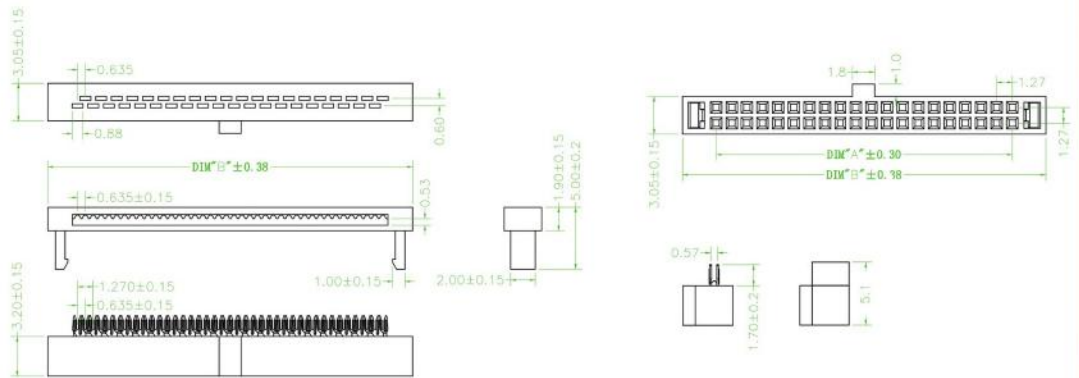
CARATTERISTICHE:

- Corrente nominale: 1 A
- Resistenza d'isolamento: 1000 MΩ Min.
- Resistenza di contatto: 20 MΩ Max.
- Rigidità dielettrica: 500V AC per 1 minuto
- Temperatura di lavoro: -40°C ÷ +105°C

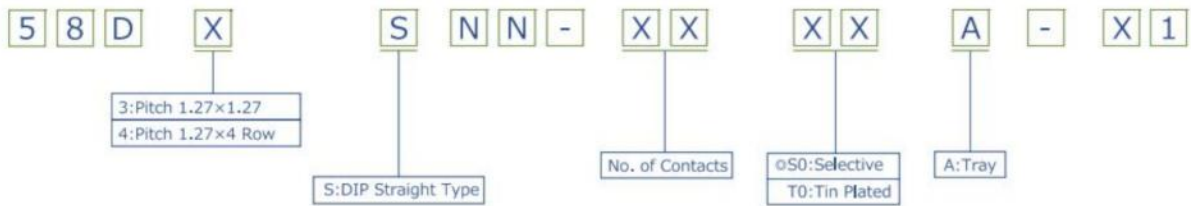


○: Standard Recommended

+ PTH femmina doppia fila dritto

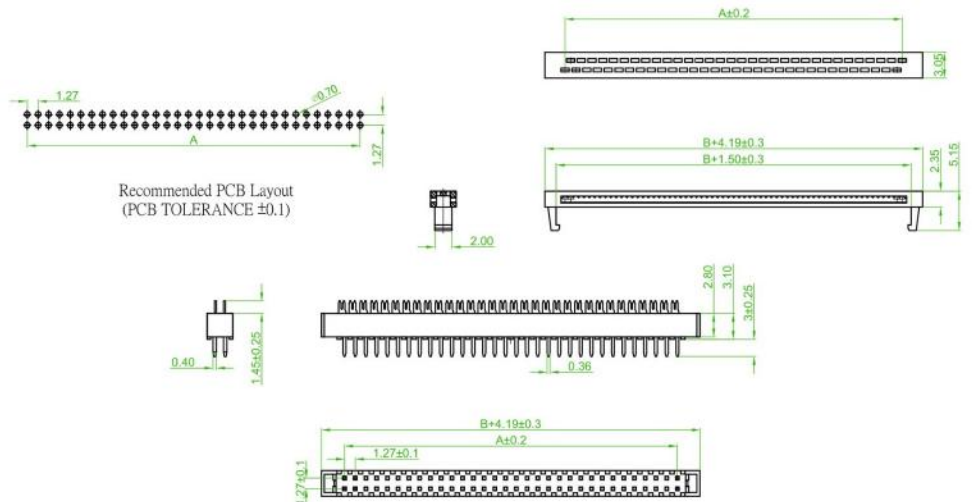
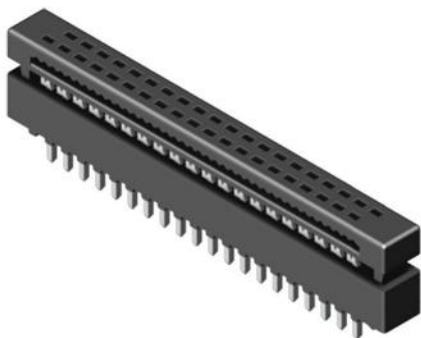


SERIE: 58I3DAB-XX



○: Standard Recommended

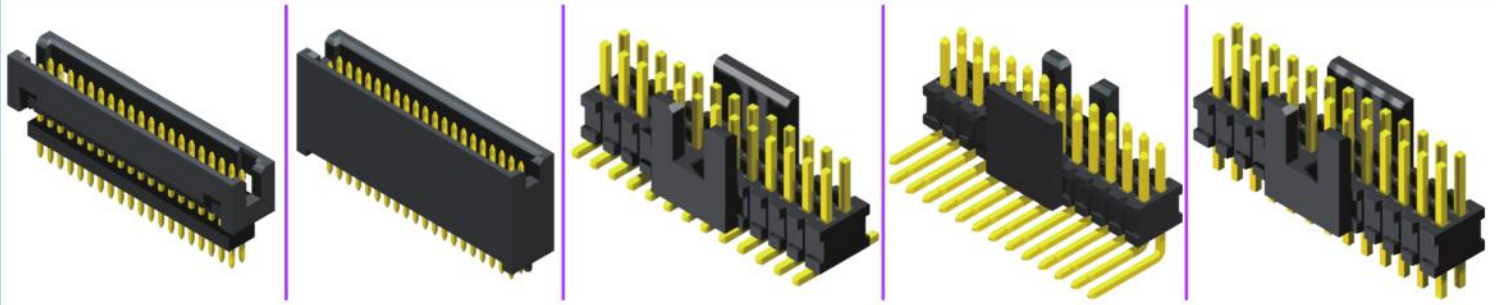
+ PTH femmina doppia fila dritto



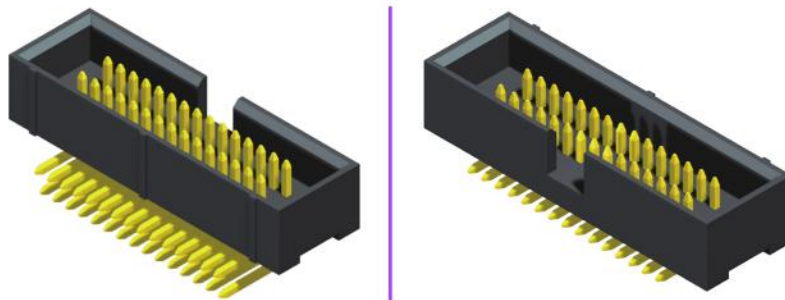
SERIE: 58D3SNN-XX

Altre serie fornibili su richiesta:

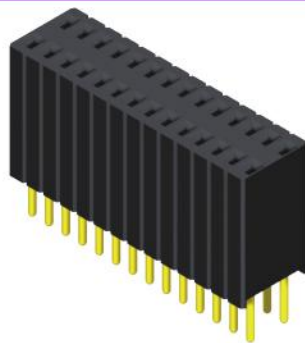
Box Header passo 1.27x1.27mm



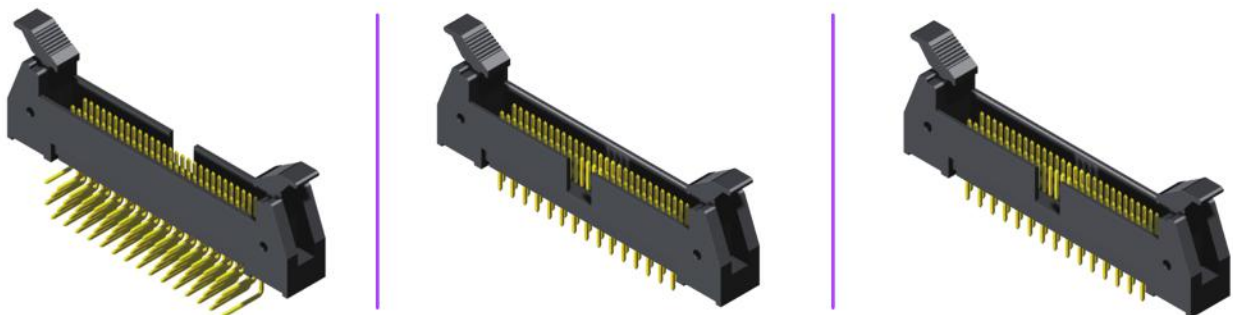
Box Header passo 1.27x2.54mm



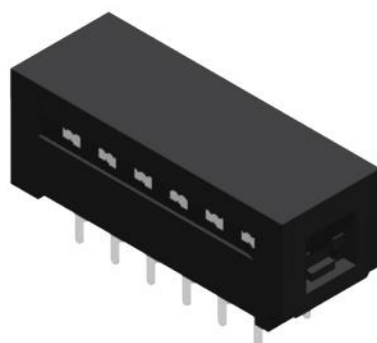
Female Header passo 1.27x2.54mm



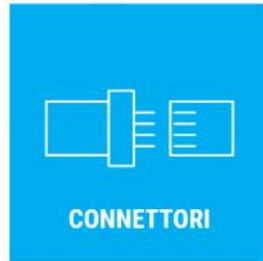
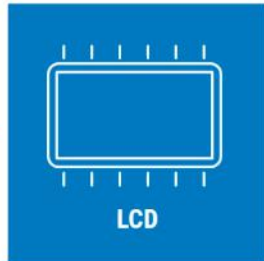
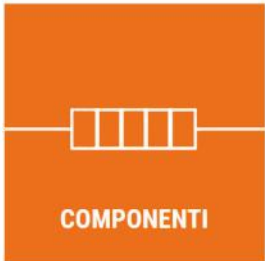
Ejector Header passo 1.27x2.54mm



DIP PLUG passo 1.27mm



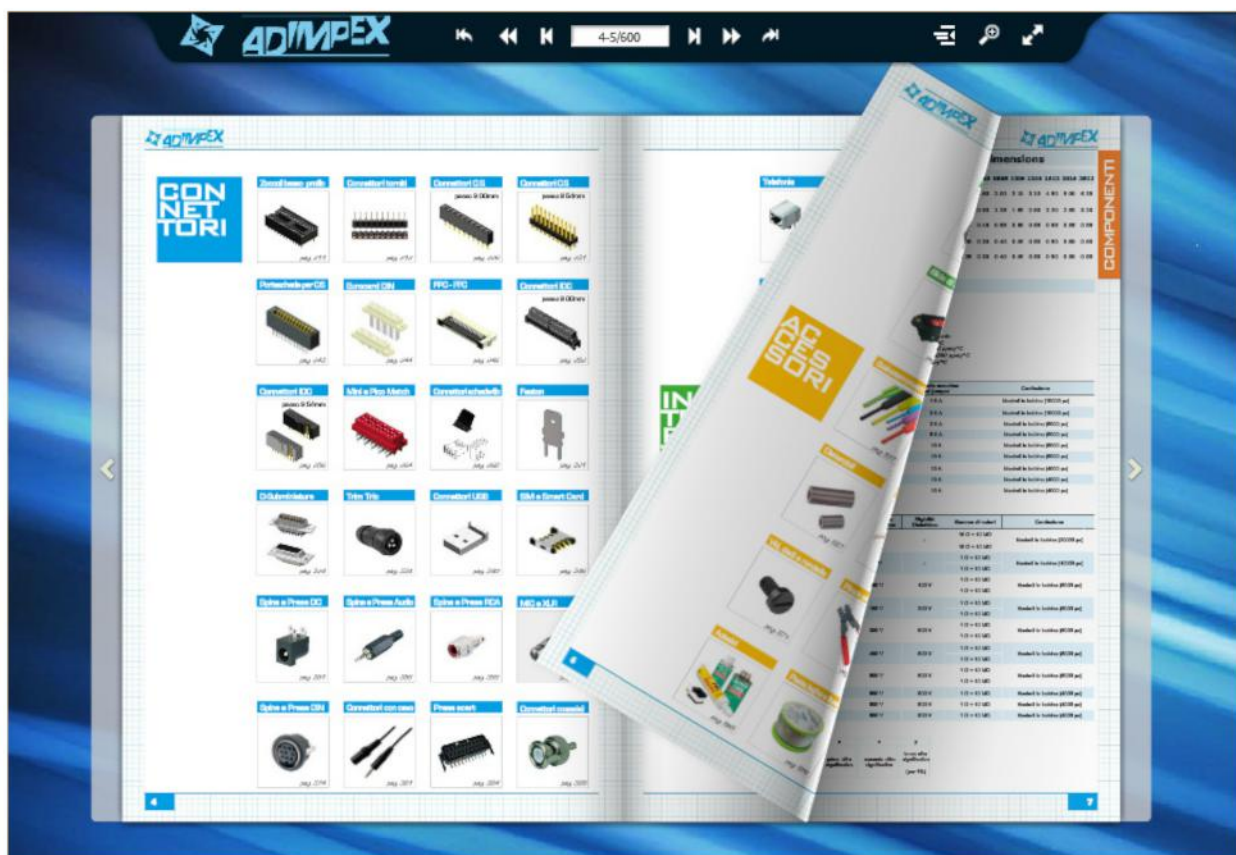
SIAMO ANCHE:



VISITA IL NOSTRO SITO:

WWW.ADIMPEX.IT

**PER CONSULTARE IL
NOSTRO
CATALOGO GENERALE
8° edizione**



DOVE SIAMO

I nostri uffici si trovano in *via Adriatica 17/C, 60022 Castelfidardo (AN), Italy*



Collaboriamo con i migliori brand di settore.

Siamo distributori ufficiali di realtà leader nella produzione di componenti elettronici a livello locale e internazionale.



Connectors Connect the World

Quality Connect You & Me.

