



3 HOMES. 1 EQUINE ESTATE. ENDLESS POSSIBILITIES

**12052 SKY VIEW DR,  
VALLEY CENTER, CA 92082**



LOG CABIN HEART  
EQUESTRIAN SOUL  
THREE HOMES  
ONE EXTRAORDINARY ESTATE



# WELCOME HOME

12052 SKY VIEW DR,  
VALLEY CENTER, CA 92082

Few properties stop you in your tracks. This one does. Set on 4.65 fully fenced acres in the heart of Valley Center ranch country, a hand-crafted log cabin welcomes you home. Three distinct residences – a 2,610 sq ft main home, a private ADU, and a separate pool house – offer the kind of flexibility that multi-generational families and discerning buyers spend years searching for, each independent enough for privacy, close enough for connection.

Outside, a resort-style saltwater pool and nearly 800 sq ft of covered patios create an outdoor living space worthy of the setting.

A complete equestrian facility – arena, stalls, hay barn, and tack shed – reflects a property built for genuine country life, not merely the appearance of it.

Solar generation, Tesla Powerwalls, and 7,500 gallons of water storage ensure that beauty here is matched by backbone.

Once you've seen 12052 Sky View Dr, nowhere else will quite measure up.





# LOG CABIN CHARM

---

Hand-crafted log walls. A wood-burning stove. A kitchen island where conversations linger and a breakfast room that catches the morning sun. Three bedrooms, two and a half baths, and all the quiet soul of country living — paired with high-speed internet plus a home office loft for the life you actually live.

## SPECIFICATIONS

2,610 SQ FT MAIN HOME  
3 BEDS, 2.5 BATHS  
800 SQ FT OF COVERED DECKS

RESORT SALT WATER POOL  
POOL HOUSE OF 900 SQ FT & 1 BED, 1 BATH  
GUEST HOUSE OF 500 SQ FT & 1 BED, 1 BATH

SOLAR PANELS & TESLA POWERWALLS  
7,500 GALLONS OF WATER STORAGE TANKS &  
HOLDING PONDS

3 STALL HORSE BARN, ARENA, HAY BARN









## POOL & POOL HOUSE

---

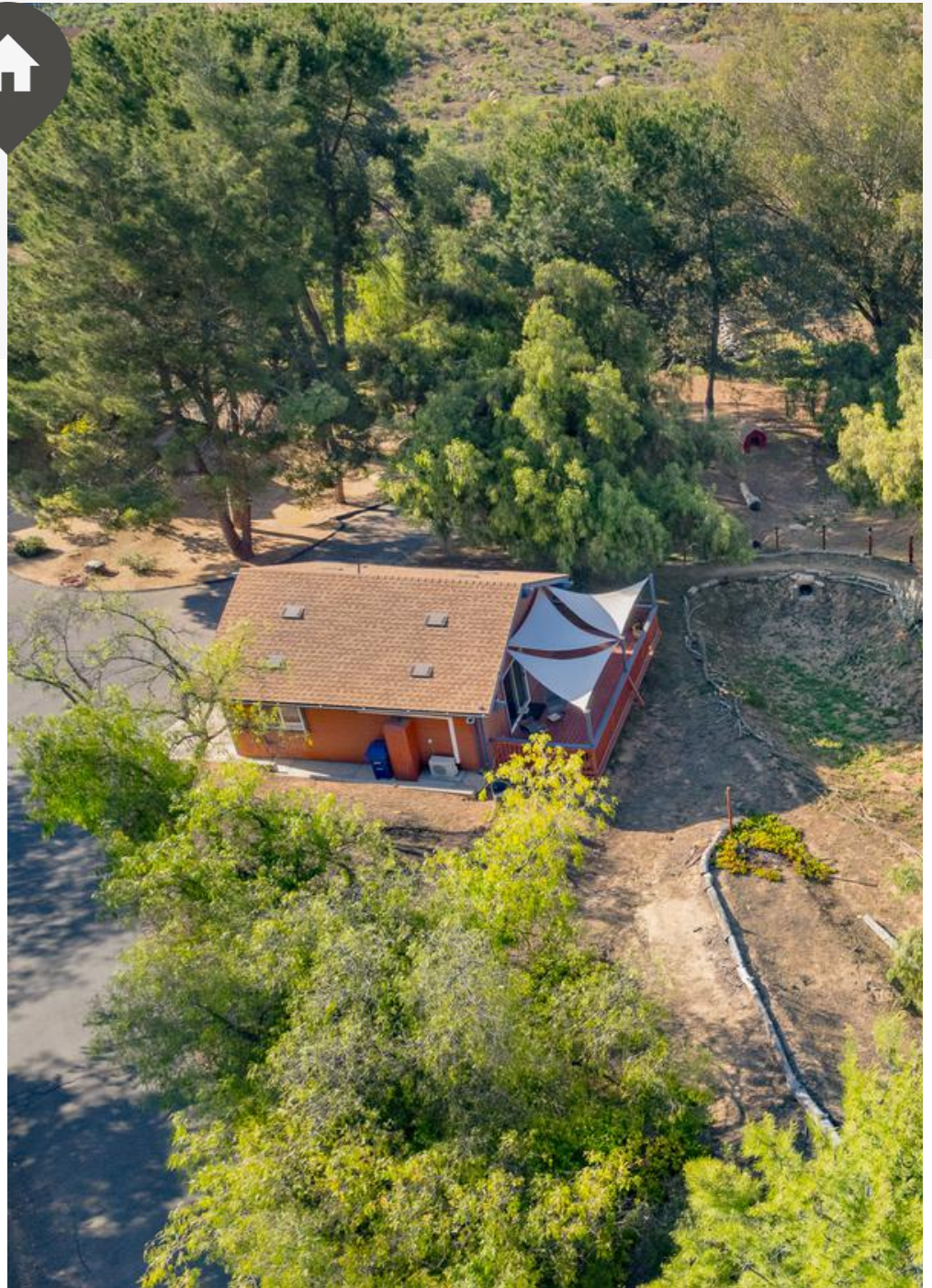
The pool house doesn't just overlook the outdoors – it opens into it. Accordion glass doors fold back to merge 900 sq ft of living space with the covered outdoor room beyond. Swim in the saltwater pool and feel the difference – silky, easy, and endlessly refreshing. Inside or out, the line simply disappears. A setting that makes entertaining feel less like hosting and more like living.



# GUEST HOUSE

---

Tucked near the equestrian arena, this charming 500 sq ft guest house offers a private one-bedroom, one-bath retreat, perfectly positioned for riders, caretakers, or visiting friends who want to be close to the horses and the heart of the land.





# ADDITIONAL AMENITIES

---

Quietly integrated throughout the property, solar power with Tesla Powerwalls and extensive water storage systems—including tanks, ponds, and rainwater collection—offer a level of preparedness that enhances both comfort and confidence in daily living.

## SUSTAINABILITY

### **SOLAR**

SUSTAINABLE SOLAR + TESLA  
POWERWALLS

### **WATER**

7,500 GALLONS OF WATER STORAGE  
TANKS + HOLDING PONDS





# EQUESTRIAN FACILITIES

---

## FULL EQUESTRIAN SETUP

75' × 115' ARENA  
BARN WITH 3 STALLS  
ADDITIONAL HAY BARN  
TACK ROOM

Well-laid-out for everyday use with a 75' × 115' arena, three stalls, hay barn, and tack shed, with flexibility to grow.

The kind of place where rides run a little longer and the horses never seem in a hurry to head back to the barn.





# VALLEY CENTER



PROTECTED. PURPOSEFUL.  
PERFECTLY LOCATED.

Location matters. Valley Center is one of Southern California's last truly protected rural communities – 20,000 residents spread across 100 square miles, where equestrian life, 4-H, and small-town life thrive. A community plan that preserves grove lands, custom estates, and wide open space ensures the character here endures. Yet Temecula wine country, California beaches, and the energy of downtown San Diego are all within 45 minutes. The best of both worlds isn't a compromise – it's Valley Center.



## SCHOOLS

[VALLEY CENTER HIGH SCHOOL](#)

[VALLEY CENTER MIDDLE SCHOOL](#)

[VALLEY CENTER ELEMENTARY SCHOOL](#)

## CIVIC

[VALLEY CENTER HISTORY MUSEUM](#)

[VALLEY CENTER LIBRARY](#)

[VALLEY CENTER CHAMBER OF  
COMMERCE](#)

## NEARBY ATTRACTIONS

[PALOMAR OBSERVATORY](#)

[BATES NUT FARM](#)

[CALIFORNIA CENTER FOR THE ARTS](#)

[SEA WORLD](#)

CLICK ON ANY PLACE NAME ABOVE TO GO  
TO THEIR WEBSITE

## KRUEGER REALTY

Krueger Realty has been the number one brokerage in Valley Center Year after Year. Although Valley Center is where our main office is, we have branched out to the Coast! For all of our clients, we cover any area throughout San Diego and Riverside County. All Real estate Companies try to claim dominance in a market, but Krueger Realty can prove the numbers for our hometown of Valley Center. Consistently, no other team, brokerage, or individual has been able to compete with Krueger Realty. As your hometown Brokerage, Krueger Realty has kept clients interests as their top priority year after year.



# KIM CUCINELLA

BROKER, OWNER DRE# 01983545

(760) 532-4619

[KIM@KRUEGERREALTYHOMES.COM](mailto:KIM@KRUEGERREALTYHOMES.COM)

[WWW.VALLEYCENTERHOMES.COM](http://WWW.VALLEYCENTERHOMES.COM)

CALL US TODAY!



PRESENTING

# 12052 SKY VIEW DR

VALLEY CENTER, CALIFORNIA

---

| PROPERTY TYPE         | MAIN HOUSE                                   | POOL HOUSE | GUEST HOUSE |
|-----------------------|--|------------|-------------|
| LIVING AREA           | 2,610 SQFT                                   | 900 SQFT   | 500 SQFT    |
| BEDROOM               | 3 BEDS                                       | 1 BED      | 1 BED       |
| BATHROOM              | 2.5 BATHS                                    | 1 BATH     | 1 BATH      |
| TOTAL ACREAGE         | 4.65-ACRE PARADISE                           |            |             |
| EQUESTRIAN FACILITIES | 75'x115' ARENA 3 STALLS, HAY BARN, TACK SHED |            |             |
| AMENITIES             | RESORT-STYLE SALTWATER POOL                  |            |             |

---

ASKING PRICE

**\$1,350,000**

---



**KIM CUCINELLA**

---

**KRUEGER REALTY**

28732 VALLEY CENTER ROAD, VALLEY CENTER, CA 92082

**E. [KIM@KRUEGERREALTYHOMES.COM](mailto:kim@kruegerrealtyhomes.com)**

**M. (760) 532-4619**

**W. [VALLEYCENTERHOMES.COM](http://valleycenterhomes.com)**

DRE# 01983545