

 CELLAR MAISON



Personalised
Wine Cellar
Solutions

Introductory Portfolio



3-4.	Introduction
4-5.	Services
6.	Process
8-19.	Wine Rooms & Cellars
20-29.	Wine Walls
30-36.	Configurable Wine Racks
37-39.	Wine Fridges
40.	Testimonials
41-42.	Contact Details

Introduction

Creators of Fine, Bespoke, Wine Stores

Exceptional installations that
are impactful, emotive and
meaningful.

Having grown steadily since 2012, we are proud of a team that exemplifies professionalism, creativity, and a commitment to delivering exceptional service and quality for our clients.





"At Cellar Maison, we're a professional yet down-to-earth team, passionate about every detail of wine storage.

Our mission is to ensure a seamless experience for both you and your client — from the first sketch to final installation and beyond — resulting in something truly unique and enduring.

Working on projects across the UK, Europe, and Australasia, I believe our dedicated team is genuinely driven to deliver exceptional quality, expertise, and service".

Andrew Speer – Founder
Est. 2012



Design

Comprehensive design expertise, from creative to technical.

When it comes to your wine cellar design, our consultants will ensure that they fully understand your clients needs and aspirations, taking a holistic approach to design.

We will discuss client wine collection, storage needs, and lifestyle preferences, then analyse feasibility based on the property and desired cellar location.

Prepare & Build

Major works - such as structural engineering, planning, excavations, tanking, insulation, are areas our specialist build partners are happy to assist with.

The main advantages of using our team from start to finish is that we coordinate everything, allowing for a smoother on-time & on-budget project delivery Minor works - such as insulating an existing space, electrical, plumbing and data coordination and installation.

We are also delighted to work alongside architects, designers and main contractors appointed for the broader project.

Craft & Install

We are the leading experts in creating exceptional wine rooms, and wine walls, with bespoke craftsmanship and attention to detail at the forefront, whilst integrating seamlessly with the latest in cellar conditioning technology.

Our workshops have the technology and capacity to deliver any size and scale of project, and our craftsmen are highly skilled and passionate about their profession.

We have hand picked the best and most qualified furniture fitters to install our wine rooms. They are used to working on large scale building sites as well as fully finished homes where care and tidy work habits are essential.

Support

As part of our ongoing care, we think it is important to service and maintain all of the mechanical cooling systems that we install, and even some that we don't.

With our affordable routine maintenance option, your clients wine cellar will be more reliable and last longer, saving them money and worry.

Wine inventory software by [INVINTORY](#) is an excellent solution, to effectively keep track of your client wine stock in a very user-friendly and fun way.

Our Service Options

Tier 1 - CONSULTANCY & DESIGN

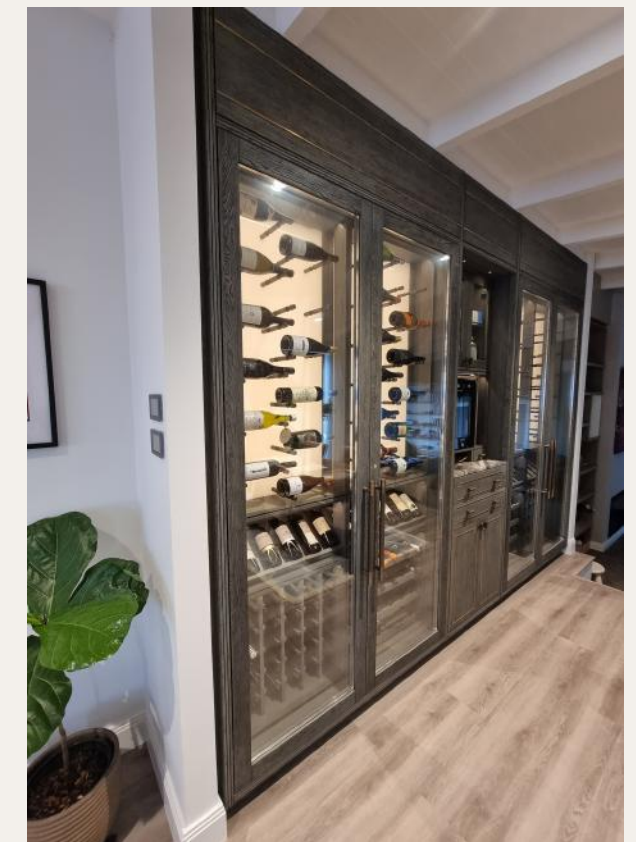
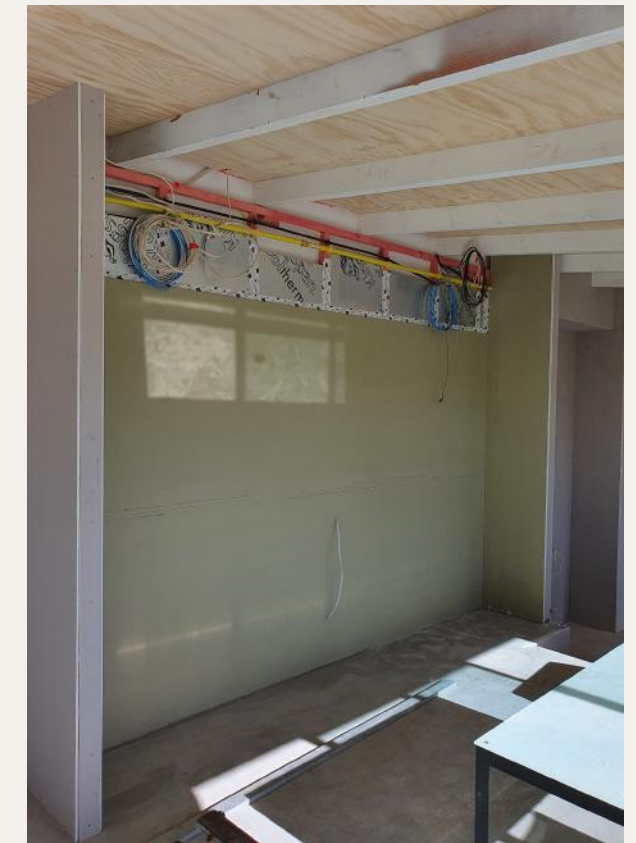
- Initial client consultation factoring in wine collection (now and future), lifestyle preferences and property layout/space
- Concept design visuals
- Room preparation advice and specification
- Climate-control design and specification
- First-fix drawings

Tier 2 - PROJECT COORDINATION

- Tier 1 +
- Project coordination between nominated suppliers, main contractor, architect and client

Tier 3 - TURNKEY - DESIGN+SUPPLY+FIT

- Tier 1 & 2 +
- Manufacture/supply of joinery, lighting, metalwork, climate-control
- Installation of the above
- After-care/servicing of mechanical cooling systems if requested

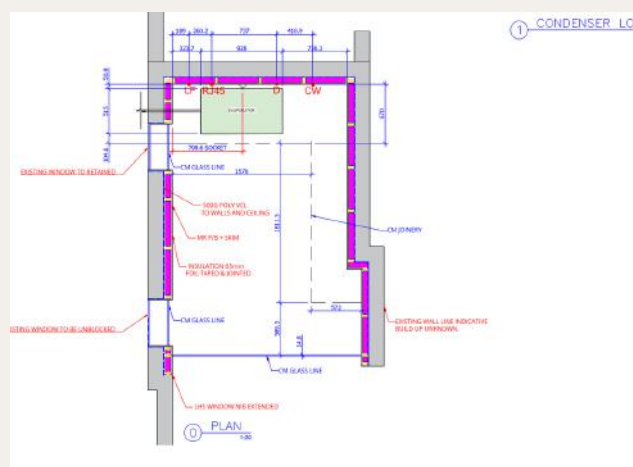
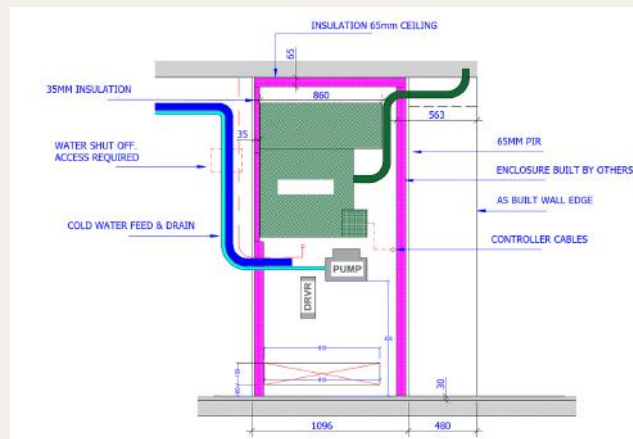


Climate-controlled wine wall & bar instalation (Auckland)

Design and technical expertise - avoid common pitfalls and speak with us



Our refrigeration experts solve the most complex engineering challenges



Cellar Maison

We work directly with architects, builders, designers, developers and restaurateurs, as well as residential and commercial property owners/wine collectors. We offer an end-to-end service outlined below.

As specialists, we are able to provide a most comprehensive warranty giving peace of mind to our clients. Our team have the design and technical expertise to ensure that your project is executed correctly and delivered on-time and on-budget.

Process

Simplifying the process for our clients whilst delivering comprehensively on all phases of a project. Producing world class bespoke joinery, glass and metalwork is our forte'.

Our end-to-end process includes design, manufacture, installation and after-care support.

Contact us now to discuss your needs: andrew@cellarmaison.com

Any Space

Whether you are a private collector, professional specifier, or in the hospitality business, we are here to help you.

This document show cases a small number our Wine Cellar projects.

Visit www.cellarmaison.co.nz to take a look at our latest creations.





Definition (1) Fully climate-controlled space.



Definition (2) Series of climate-controlled wine walls.

Wine Rooms

More closely aligned with the traditional 'cave-a-vin'. Walking into the wine room, your client will feel instantly immersed in their wine collection.

WINE ROOM DEFINITION (1)

A walk-in room that is entirely climate controlled, designed for safe storage & cellaring of wine. This can be above or below ground.

WINE ROOM DEFINITION (2)

A walk-in room with a series of climate-controlled wine walls or cabinets, installed within the room. This allows the wine tasting area to remain at regular room temperature. Installations can be above or below ground.

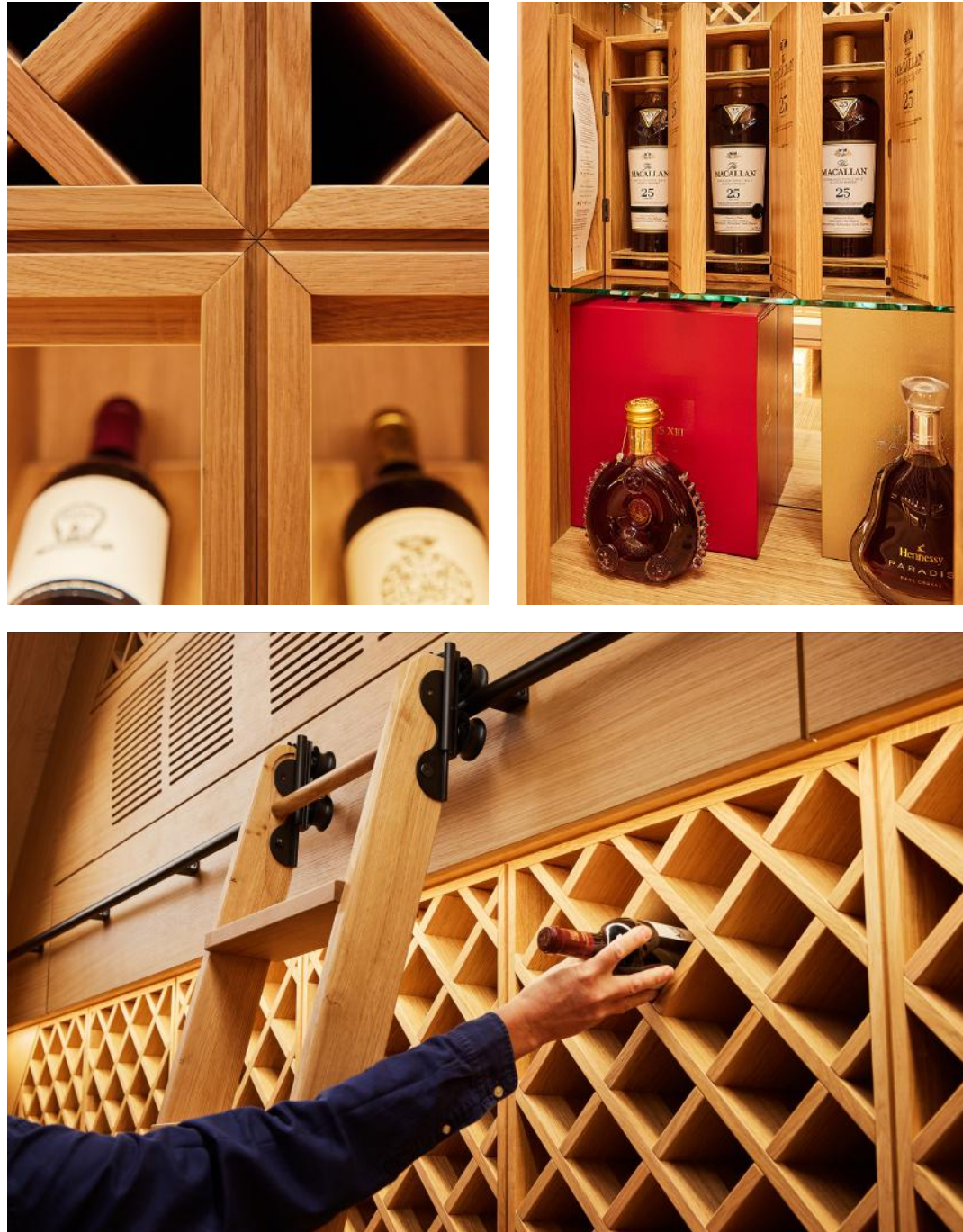
Wine rooms generally suit larger capacity wine collections from 500 to 10,000 or more bottles. Space will often have a different look and feel to the rest of your home and can be a blissful escape from everyday routine. Our wine room designs provide both storage and elegant display, with many different styles and features available.

Our wine room experts can design, manufacture, and install safe, functional, and beautiful wine storage/display almost anywhere, as cellars don't necessarily have to be below ground.

We're in the business of creating unique areas to store and display your collection, whether for a large or small space.



We understand that your client's wine collection is incredibly valuable, whether more from a financial or sentimental perspective.



Filled with custom details, this wine room is tailor made for it's owners.







Natural oak references a French cave-a-vin.



Back-lit acrylic and stainless steel wine display creates a contemporary look.



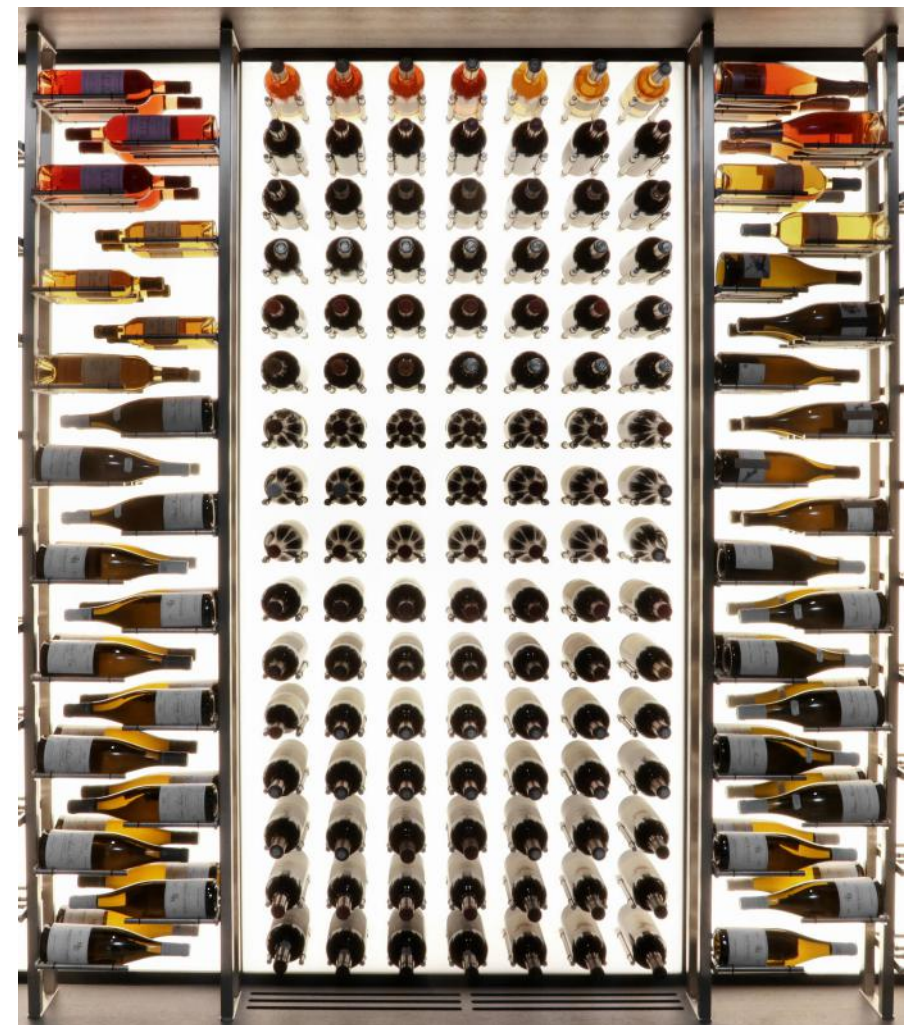


Dark brown oak joinery with custom wine cask tasting table.





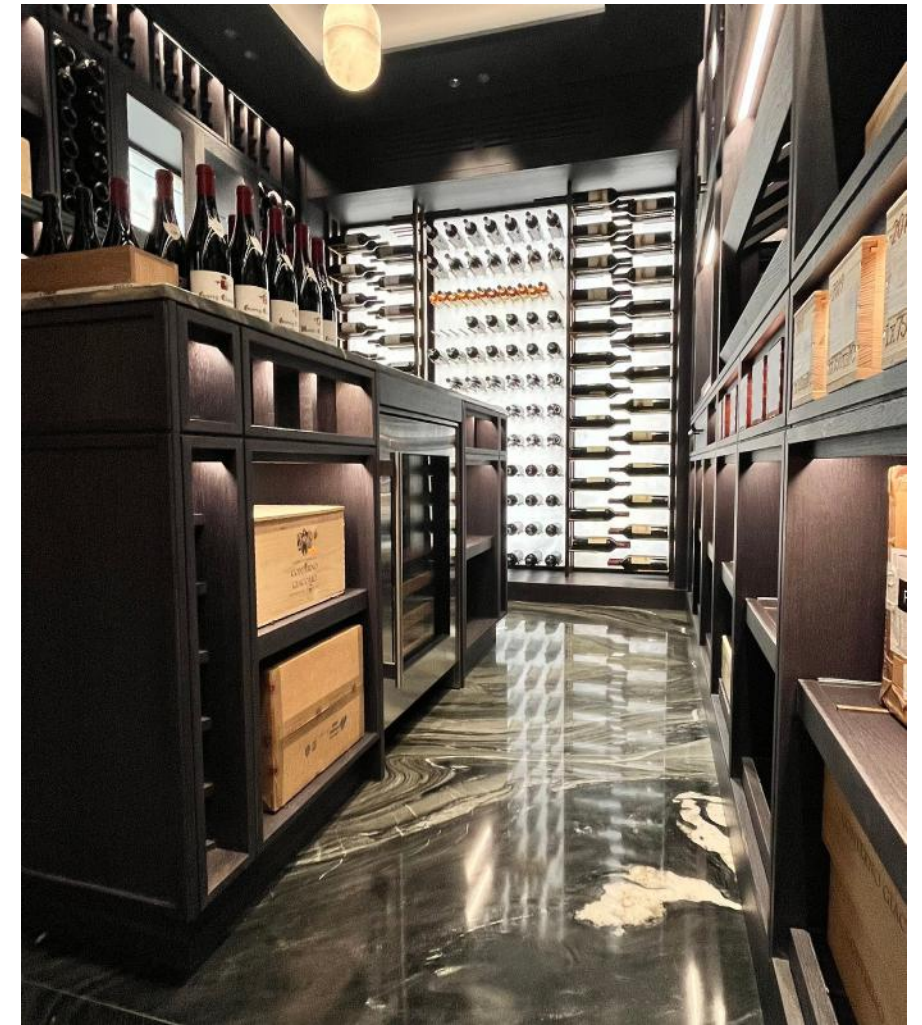
Mid-brown oak joinery and welsh slate countertops.

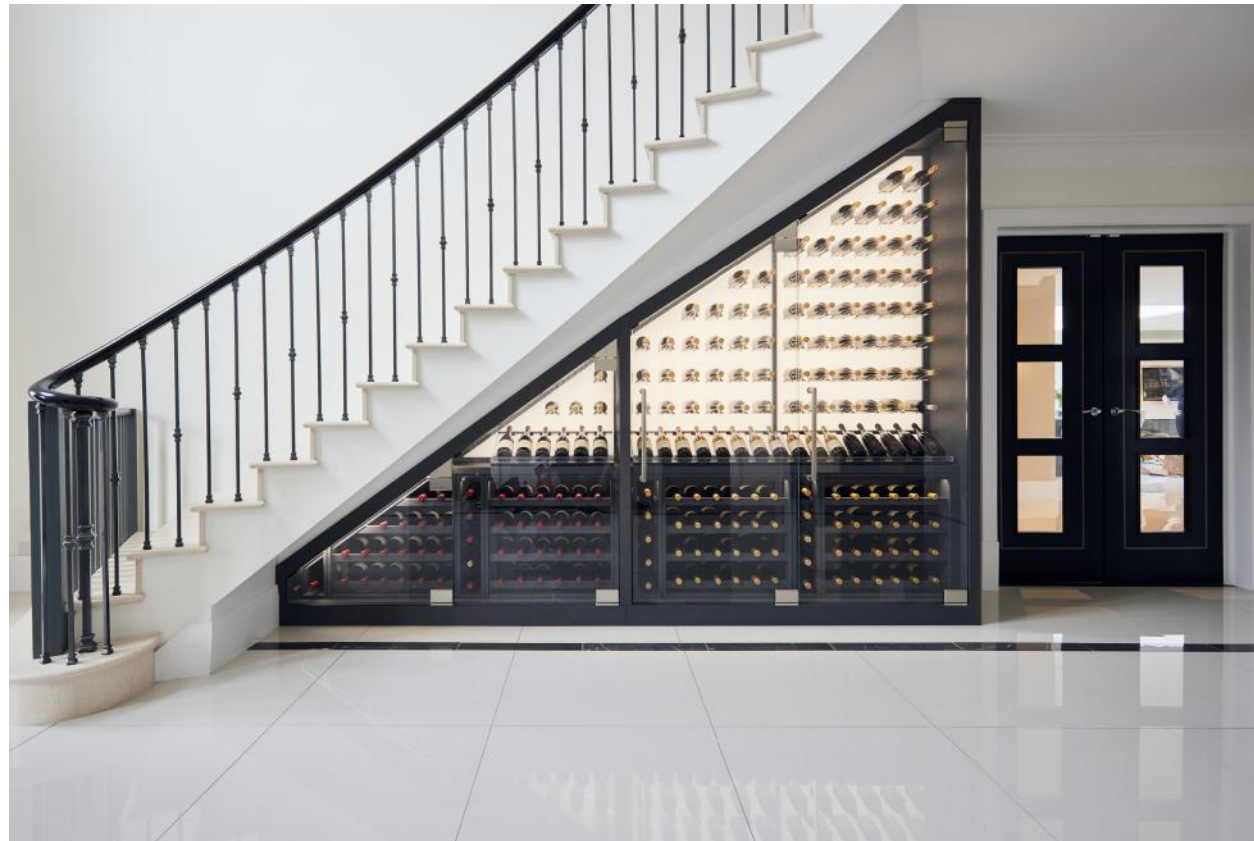


Stainless steel racking and bespoke thermal glass door.



3500 bottle capacity wine cellar from oak, onyx, brass and marble





Example(1) Under stairs wine wall.



Example (2) Series of climate-controlled wine walls.

Wine Walls

Wine walls are perfect for entertaining areas, showcasing some or all of your client's wine collection within a safely conditioned environment

Wine walls are just that; a wall of wine bottles, beautifully displayed behind frameless or framed glass. With a unique climate control system, and LED feature lighting, most installations only require a depth of around 45-70 cm. Bottle capacity can range from 120 bottles to 2,000 or more.

Wine walls are perfect for properties where space for a walk-in wine room is not available.

Tasting rooms - we can also create a series of climate-controlled wine walls within a tasting room, allowing the main space to remain at a comfortable temperature, whilst having full view and enjoyment of the wine collection behind glass. See our Wine Room Portfolio for further information.

Our design experts can create, manufacture and install wine walls almost anywhere, either above or below ground. The most common locations to install a wine wall are:

- Dining room
- Living room
- Kitchen
- Entertaining area
- Dividing feature wall (glass on both sides)
- Wine room with a series of wine walls within (tasting room)
- Restaurant/wine bar front of house





Hybrid style wine wall in a light oak finish



Classic style under-stair wine wall











Contemporary under-stair wine wall

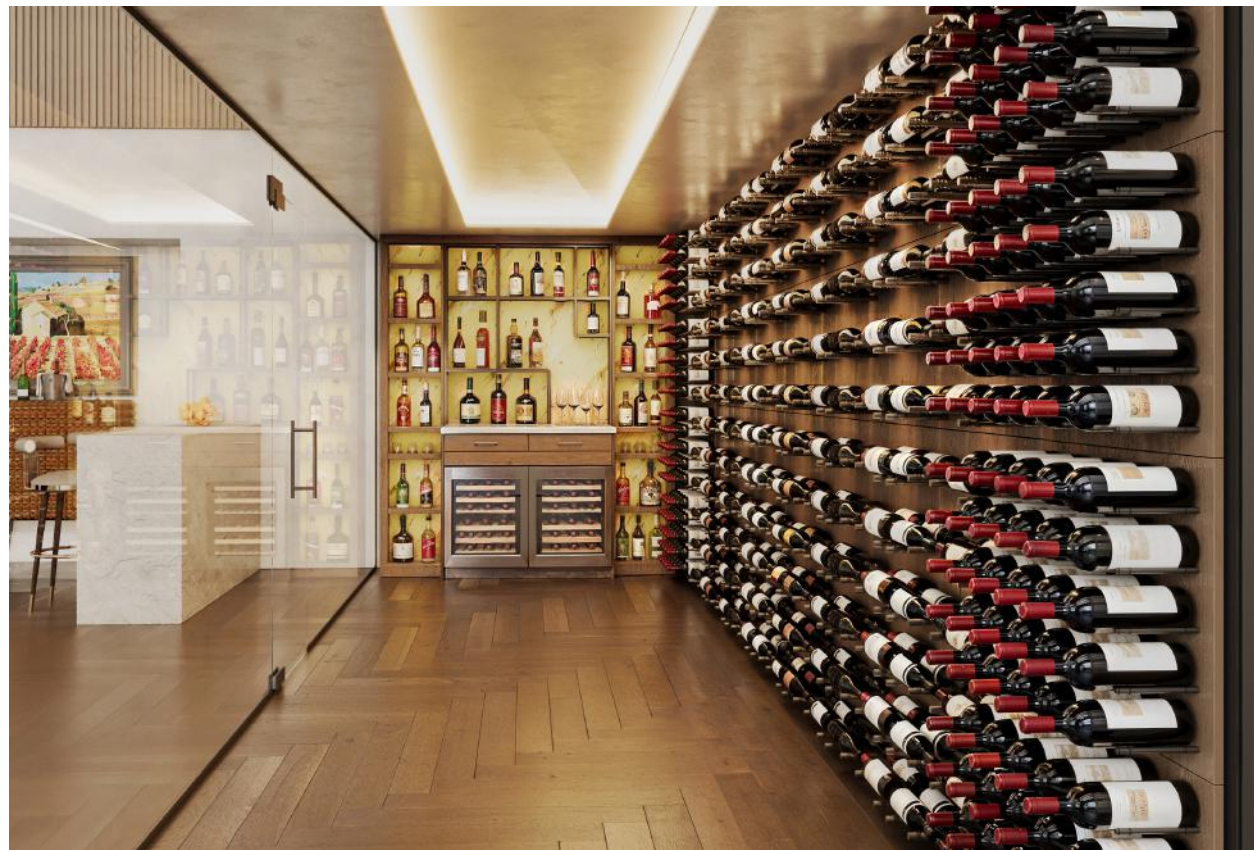




Bespoke wine library for a prestigious London private members club.



Example - wine dividing wall from our DISPLAY Series



Example - wine room from our FEATURE Series

Configurable Wine Racks

A versatile and cost-effective range of wine display and storage solutions that offer high quality without the bespoke price tag.

Designed for flexibility, these systems can be easily configured to suit requirements.

LINEAR & DISPLAY Series:

Stylish & versatile wine bottle storage and display

- Slim and durable matte black shelving suits both contemporary and traditional living spaces
- Serious collectors wanting to maximise storage vs price should consider our high-capacity horizontal shelving or,
- Showcase your fine wine with our angled bottle display shelving
- Fully configurable with height adjustable shelving
- Ceiling or wall mount fixing options
- Simple to install

FEATURE Series:

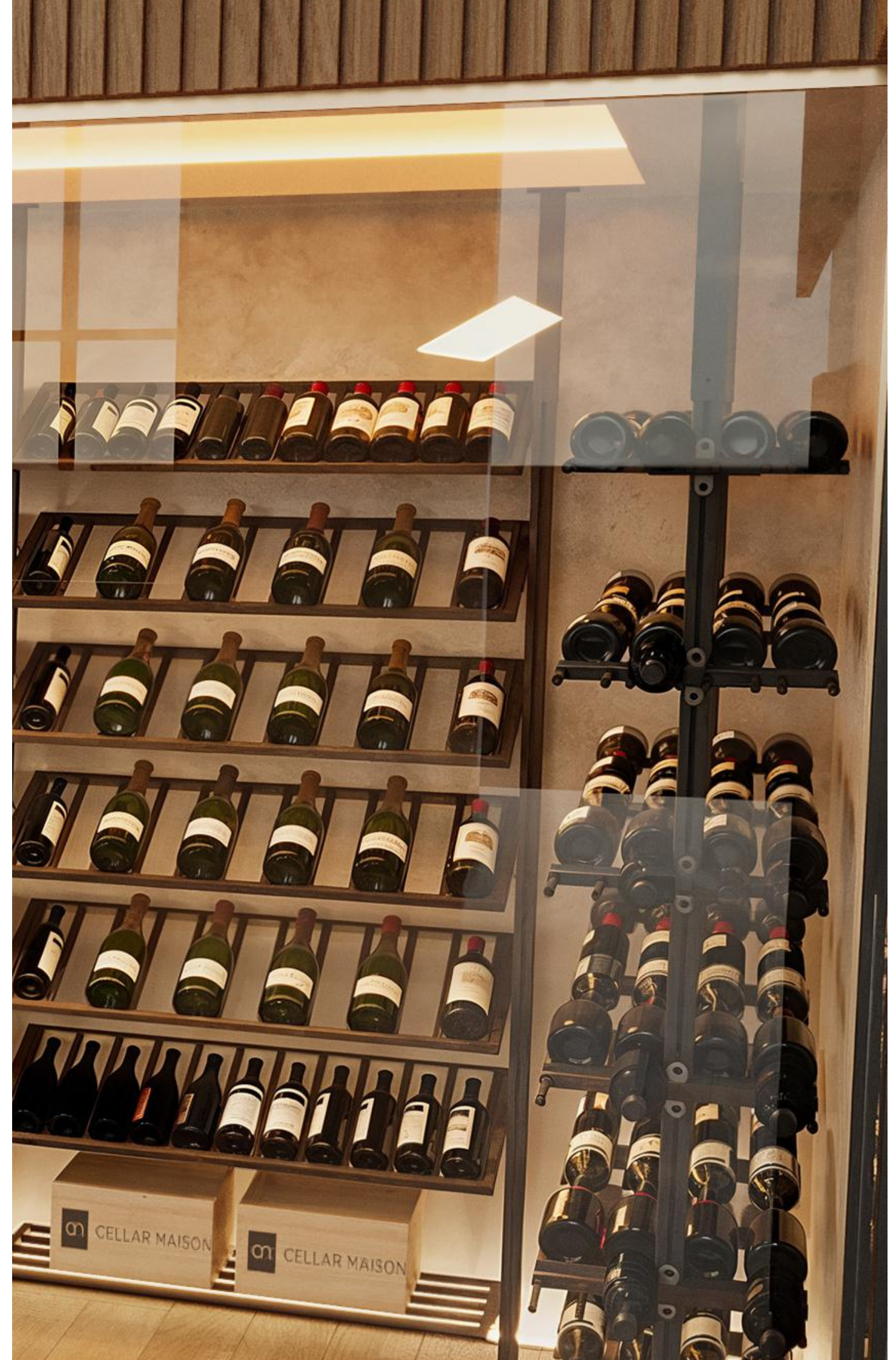
Showcase your bottles with our wall-mounted panels.

A fantastic way to create your own wine bottle feature wall, at a surprisingly cost-effective price compared with bespoke crafted items.

Standard panels are 60cm x 70cm and come in a range of finishes. 'Label-out' bottles are elegantly suspended by matte black powder-coated aluminium pegs.

Customised options also available.

Combination of our LINEAR & DISPLAY Series wine racks







'Cradle' style wine shelving from our DISPLAY Series









Example - temperature controlled wine fridge for front-of-house restaurant

Wine Fridges

Beyond the Ordinary: Wine Cabinets with Distinction

- Temperature controlled 6-18 degrees c
- Plug & play (self-contained) options
- High quality finishes such as PVD, polished stainless steel, leather, oak & stone
- Customisable in size
- Multiple interior storage & display configurations
- Touch screen controller

Discerning hotels, wine bars and restaurants
High-end residential

Leather wine bottle cradle option





Mirror polished stainless steel example

Stylish rounded corners, leather cladding option



The Essential Fusion of Function and Style

Hear from our Clients

"Few things motivate our team more than the trust our clients place in us. That's why it's especially rewarding to receive feedback that reflects the care, craftsmanship, and service we strive to deliver with every project." Andrew Speer - Founder

'Cellar Maison designed, built and installed a wine room including glazed picture doors, lighting and temperature control. Excellent design flair and great attention to detail. The installation was of the very highest quality.'

★★★★★

Paul, Wimbledon Village

'We are delighted with our bespoke wine room and very pleased with the way the team at Cellar Maison made our dream into a reality. We were also impressed with the project management undertaken by Cellar Maison and the way that they implemented from start to finish our design requirements and co-ordination of the various ancillaries (timberwork, glass partitions and airconditioning). We would thoroughly recommend Cellar Maison'.

★★★★★

Philip, Clapham

'I am extremely happy with our wine wall both from a finished product perspective and the professional service and advice received from Cellar Maison throughout. We were able to create a very bespoke product that met our specific requirements; encompassing both a dividing wall with our kitchen and separate wine display cabinet along the back wall. It is certainly the feature of the entire room and a stunning piece of architecture. I would not hesitate to recommend Andrew and his team who were able to bring our vision into an impressive reality'

★★★★★

Sophie, Holland Park

Join us online.

Keep up to date with the latest trends and technology.



cellarmaison.com



@cellarmaison



cellarmaison.com



@cellarmaison



Implement & Manage

We manage implementation and support our clients throughout the entire process to deliver an exceptional customer experience.

Craft & Design

Our forte and specialism is blending cutting edge design with innovative engineering techniques and craftsmanship to create perfectly tailored wine storage and display solutions – each unique to our clients' discerning tastes.

Explore & Inspire

Our passion at Cellar Maison is inspiring our clients to challenge conventional thinking and push the boundaries to explore and discover a new world of innovative wine storage possibilities.

Curate & Enjoy

Ultimately, we enhance a lifestyle experience with bespoke after-care solutions centred around our clients' curation and enjoyment of fine wines.

Get in touch:

info@cellarmaison.com

www.cellarmaison.co.nz

www.cellarmaison.com.au

