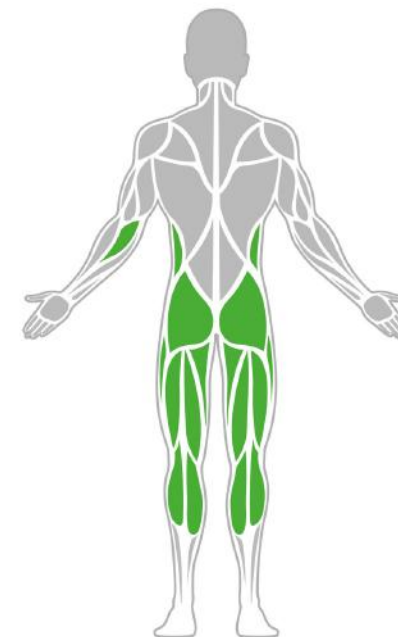
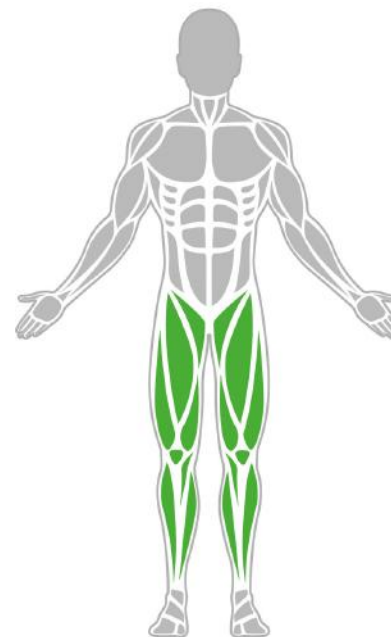


Muscle Groups Focus



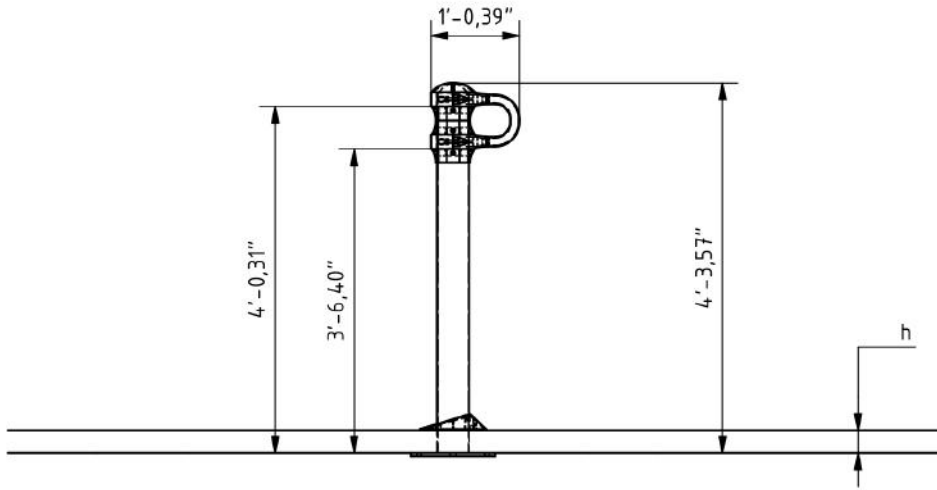
Resistance Band Anchor Pro

The Resistance Band Anchor provides the user with the possibility to increase or decrease the difficulty depending on the exercise and position. In the case of the Lateral Plyobox Pro, it will increase difficulty by adding resistance when attached to the waist. Meanwhile, when coupled with the Nordic Hamstring Station Pro, it reduces exercise difficulty by helping suspend the user from a higher position.

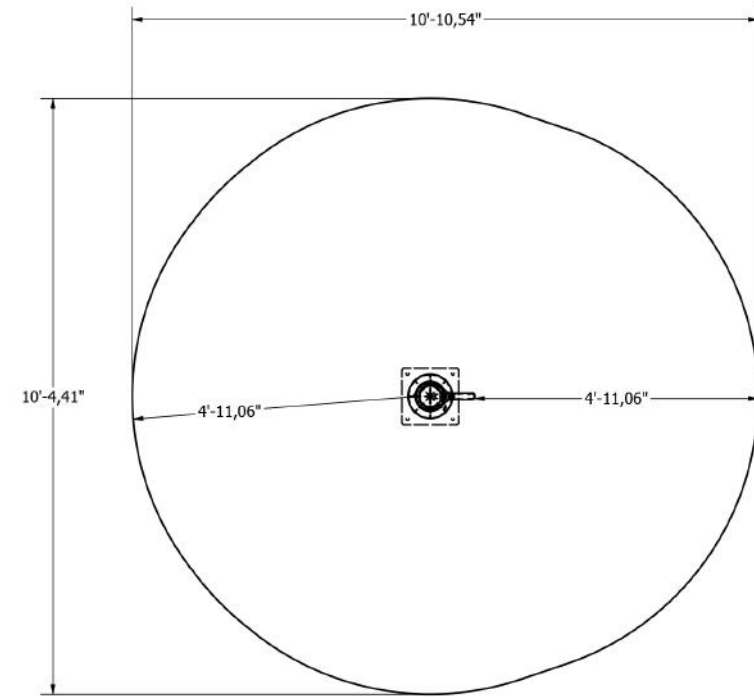
Attributes

Product code	1-1-164
Certificate	EN 16630, ASTM F3101
Age group	14 + years
Capacity	1 person
Max. weight load	218.26 lbs
Type	Sport Specific
Difficulty level	Easy

Side View



Plan View



Installation information

Number of installers (concrete)	At least 2 people
Total installation time (concrete)	30-60 min.
Number of installers (equipment)	At least 2 people
Total installation time (equipment)	30-60 min.
Excavation volume	7,06 ft ³
Concrete volume	7,06 ft ³
Size of the base structure	19.69 x 19.69 x 31.5 „
Anchoring options	In-ground or surface
In combined structures, the volume of concrete required varies.	

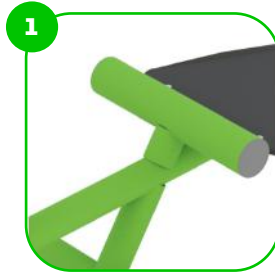
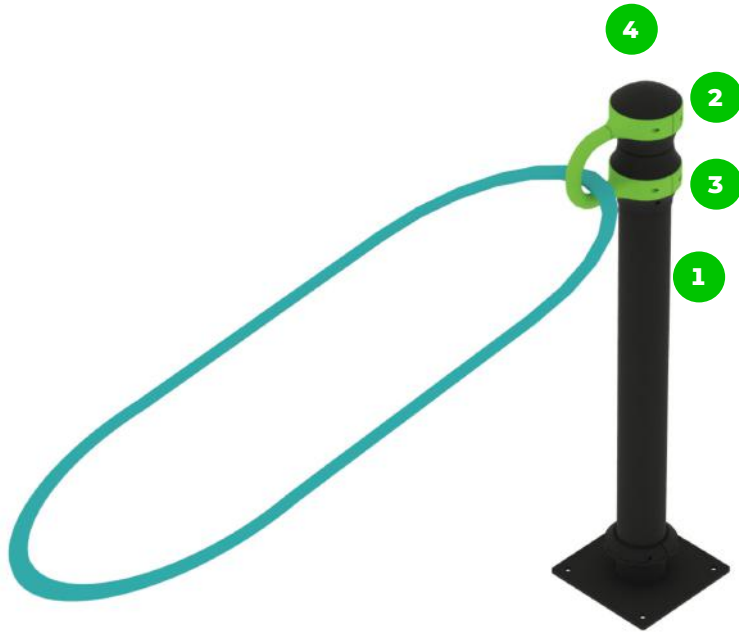
Technical specification

Safety surface area	Around 4.92 ft radius
Net weight	41.89 lbs
Material	S235
Critic fall height	-
Color options	
For more color options, discuss with your sales representative.	

Warranty

Structure	25 years
Steel	15 years
Paint	2 years
Plastic	5-10 years
Rubber	1-3 years
Moving parts	2 years
Detailed information in the warranty document	

Material specification



The element is made of high quality S235 steel, which has been cleaned via sandblasting. A corrosion resistant powder coating finish is then applied. Also available with galvanized surface for even greater protection and longevity!



The clamp system allows for easy assembly and extreme stability.



The connecting elements are fastened with vandal-proof stainless steel screws and nuts.



The ends of the bars and posts are sealed with injection-moulded plastic caps.

BESTSTRONG

 [beststrongworld](#)  [beststrongworld](#)  [usa.beststrong.com](#)  [usa@beststrong.com](#)

