

GIANT PAINTBRUSH SCULPTURE FOR FLORIADE 2024

Natureworks In action



ACT Government Events Commonwealth Park, Regatta Place, Parkes, Canberra, Australia 2024

PROJECT CASE STUDY



Giant paintbrush makes a splash at Floriade



Giant paintbrush provides centrepiece for colourful palette of flowers

At Natureworks we love working on weird and wonderful projects, so when we're asked to create a giant paintbrush, our eyes light up!

Big Things are a specialty of ours, and this one was designed to act as a visual centrepiece for a display at Canberra's Floriade Australia 2024.

Art in bloom – literally!

Floriade celebrates the coming of Spring in Australia with beautiful displays of colourful blooms at Canberra's Commonwealth Park from mid September to mid October. In 2024, the 37th year of Floriade, the theme was 'Art in Bloom'. Reflecting this theme, our giant paintbrush sits amid a vibrant palette of flowers.

"The artist's palette is where colours mix and blend to create unique masterpieces. The palette itself transforms into a beautiful, textured and colourful artwork." Floriade



British actor and author David Walliams takes a snap of the display and poses for promotional photos at Floriade. Images: The Canberra Times





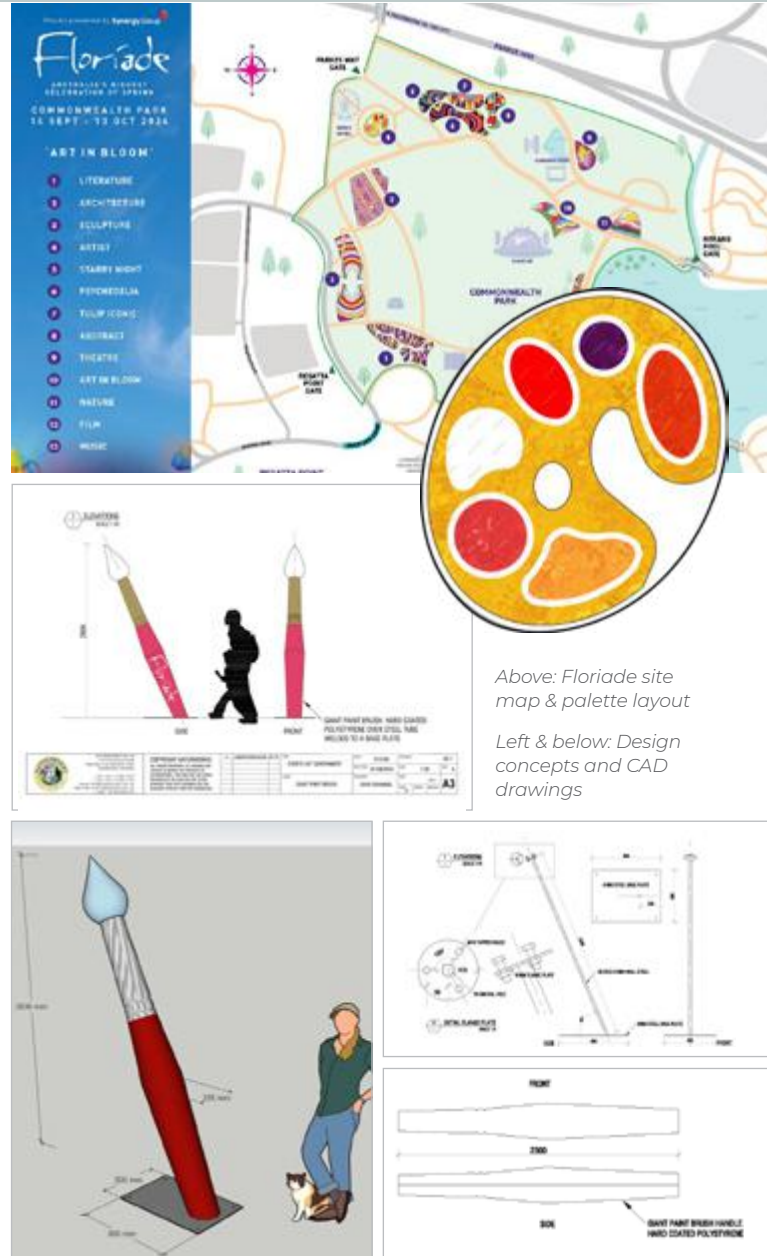
About the giant paintbrush sculpture

- The paintbrush handle is painted bright pink to match the Floriade brand colour and the Floriade logo is painted on the paintbrush handle
- The 'bristles' are made from acrylic, cut in layers to provide a hollow interior with internal wiring
- The top of the brush lights up to add interest at night-time events
- The brush is mounted on a natural slant to reflect how an artist would hold a paintbrush
- The base plate is 8mm steel, with an artificial turf cover to blend in with the garden display
- The brush handle is made from polystyrene, with an internal steel rod for support. It is finished with a polyurethane hard coat for weather protection
- As an event prop, it is built to last for at least the duration of the event (4 weeks). If you would like something similar as a permanent display, we can build a heavier duty version (just ask us!).

Designing the sculpture

Starting from the client's brief and site reference information, our team determined the most suitable way to design and build the sculpture.

To communicate the concept and scale of the sculpture, we created sketches and CAD drawings, as illustrated on this page.



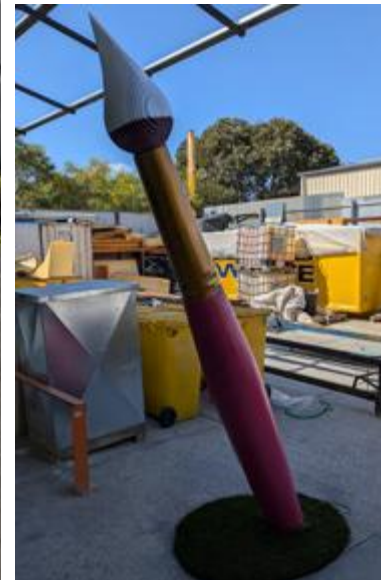
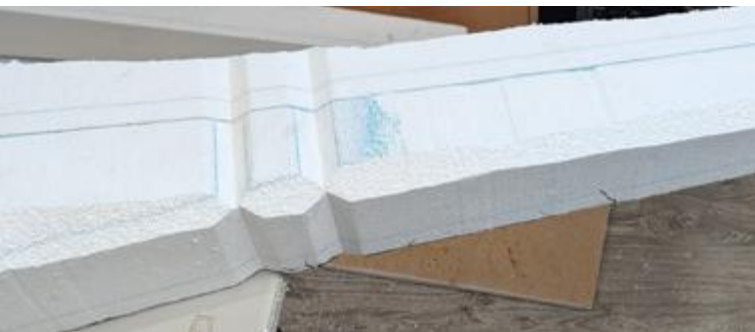
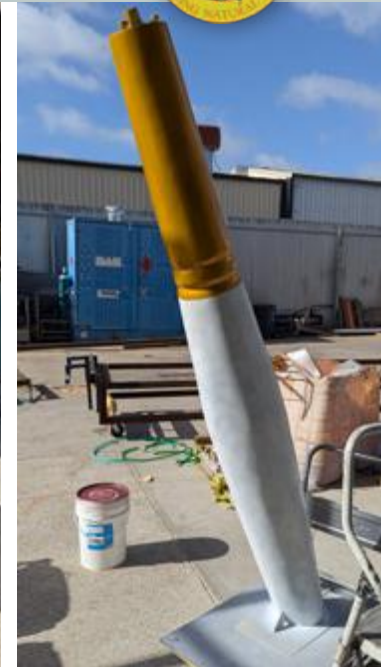


The giant paintbrush in production

To build the paintbrush shape, we sculpted the handle from polystyrene. This was strengthened by an internal steel rod installed on a mounting plate.

The brush handle was painted hot pink to match the brand colours. To complete the effect, we added the Floriade logo. Meanwhile, we prototyped and laser cut the curved acrylic bristles and installed wiring and lights. The final prop was finished with a hard weather resistant coating.

The images on this page show the paintbrush handle at various stages of production.



GIANT PAINTBRUSH SCULPTURE FOR FLORIADE 2024

 **ACT Government Events**  Commonwealth Park, Regatta Place, Parkes, Canberra, Australia  2024

Natureworks In action



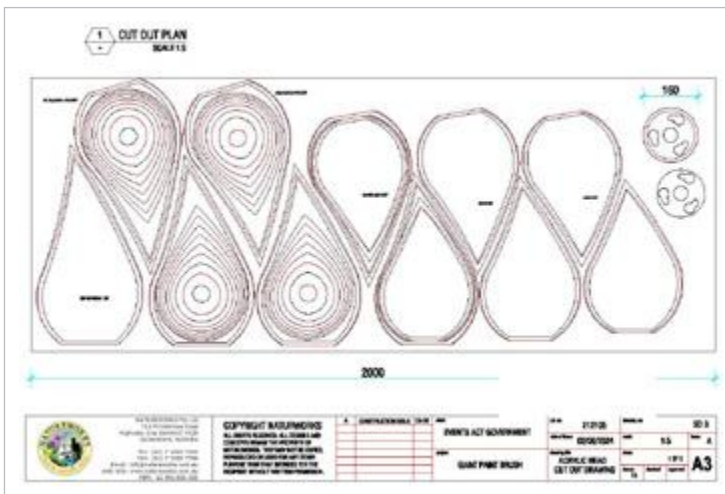
PROJECT CASE STUDY

The beautiful brush 'bristles' are a work of art – they light up too!

The bristles of the paintbrush sculpture are an artistic interpretation, simulating the slightly curved top of an artist's brush. We used layers of acrylic to create the curved shape and let light through.

The design allows for a hollow interior, into which we mounted wiring and lights for night-time display. We don't have a picture of the lit-up paintbrush at Floriade, but the images on this page show it at various stages of production.

The hollow acrylic head of the paintbrush contains wiring so the brush can be illuminated at night.



Above: Cut-out plan for the brush light

Art and Big Things draw in visitors

This project shows how art can be integrated into gardens and public events to support a visual theme. Natureworks loves working on projects like this that get people outside appreciating nature!

If you would like a unique Big Thing or art sculpture for your event or community, we can design and fabricate just about anything! Contact Natureworks to discuss ideas.