

NCC Interfaces

ECO PLUS®



ZYON

ECO PLUS®

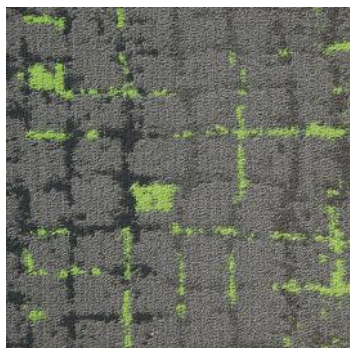
THE COLOR PINT COLLECTION
ECO PLUS®



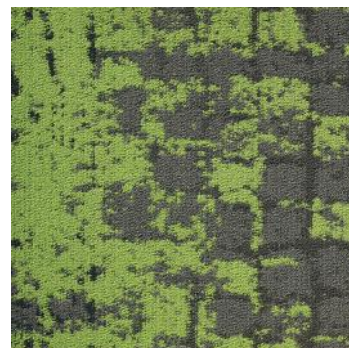
EP 300



EP 350

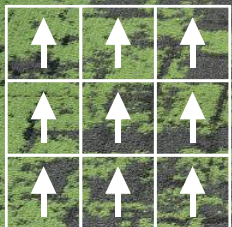


EP 500



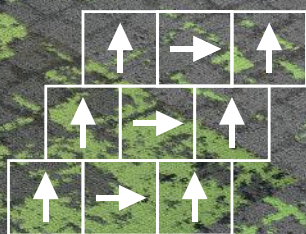
EP 550





Monolithic

ECO PLUS
EP 300, EP 350, EP 550



Herringbone

ECO PLUS
EP 300, EP 350, EP 550



TILE SPECIFICATION

FIBRE	: AQUAFIL CHROMO NYLON
CONSTRUCTION	: High Definition Color Point
MACHINE GAUGE	: 1/10"
PILE HEIGHT	: 6 mm
TOTAL HEIGHT	: 10 mm
PILE WEIGHT	: 900 gsm/m ²
PRIMARY BACKING	: Non Woven Lutrador
SECONDARY BACKING	: PVC + Fibre Glass
SIZE PER TILE	: 50 cm x 50 cm
NO. OF TILES PER BOX	: 20 pcs per box (5m ²)
INSTALLATION	: Surface Tackifier
ANTISTATIC PROPERTIES	: Permanently Antistatic

PERFORMANCE SPECIFICATIONS

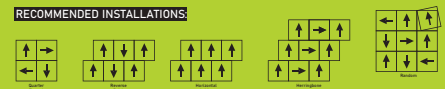
FLAMMABILITY
 KS K. 0584 3.1 : char Lenght (cm) 7.1
COLOR FASTNESS TO LIGHT
 KS K 0700, FADE-O-METER, ISO BLUE SCALE (ISO GRADE 4): Above 4
RUBBING FASTNESS : Weight loss abrasion
 KS K 0818 : 29.7(mg)
ELECTROSTATIC PROPENSITY
 ISO/TR6356, STROLL METHOD : (Volt) 100

- Product specifications are derived from averages resulting from normal manufacturing tolerances in yarns, temperatures, humidity, and colour and colour may vary within normal industry tolerances.
- Colours are subject to dye lot variations, exact conformity in colour between samples and the final product is not guaranteed (tolerance of min 5% is allowed)

INSTALLATION & MAINTENANCE

- Depending on the installations method, seams may remain visible and this should not be treated as an inherent flaw of carpet tiles.
- The subfloor must be dry, smooth, flat and free of dirt or any debris that could affect adhesions of Tiles on the floor.
- Chair pads are recommended under office chairs to preserve appearance retention, avoid premature wear to carpet tile.
- Carpet maintenance must be regularly be carried out to extend the life of the product.
- Regular use of vacuum - brushing cleaner is the best way to care for carpets.

RECOMMENDED INSTALLATIONS



WARRANTY:

- Lifetime Commercial Limited



Features & Certifications



01 100 2035345



1196595.1A



GLP100263



1196595.ID



BOMT20019176



K3L 20-D-000598



795/SJ-IND.8/TKDN/4/2021