



# VOLUME HOMO METRY FUTURUM

#1

**STEREOTYPICAL  
IDEALS OF  
BEAUTY WILL BE  
CHALLENGED.**

Portrays how man directs his  
own destiny with the help of  
imagination.



# CONTENTS

## 2021

### Inspiration

Prepare yourselves to be mentally stimulated as you have never been before.

04

### All About the Scotch Skirt

An innovative way to construct a garment, shown step by step.

07

### Techinchal Drawing and Analysis

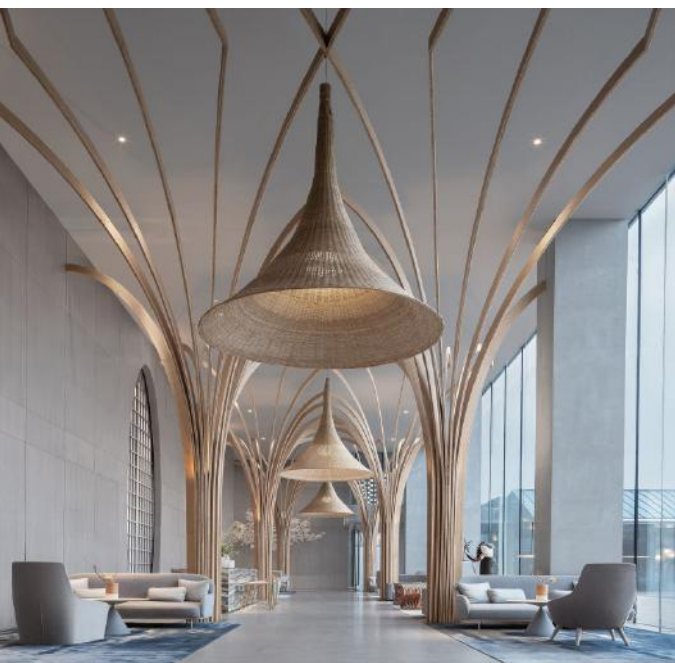
Showing and describing the exact details of the design.

12

### To be continued..

Details will follow.

16



**Homo** (lat.  
homo "Human")

**Futurum** (lat.  
futurum "Future")








# “Biology enables, Culture forbids.”

— Yuval Noah Harari



**The Future is uncertain ... But this uncertainty is at the very heart of human creativity.**

- Ilya Prigogine



**Stereotypical ideals of beauty are challenged and aesthetic differences between women and men as well as visual habits are deconstructed.**

The process shown will result in an unisex skirt, to show the next step of the human evolution. It is not about denying the existence of gender, but much more about acceptance and self-interpretation.

The only force that prevents us from revealing and living our true selves is our thinking in stereotypes. The question is not, if something like gender should exist to divide people in men or women. However we should ask ourselves in a society with independent and free individuals, why we still want to divide us in different section, no matter if it is called gender, race, religious beliefs or wealth. We are all one kind and should act like it, therefore I created a unisex skirt which is made for humans.

I got inspired by architectural and natural forms, to show that man made lines and natural lines can go hand in hand. As an abstract metaphor that coexistence between nature and the human kind is not only possible, but even mandatory for a harmonious future.

- Marie Linsenhoff





HYPNOTIC ORDER

SOFT SP





VOLUMINOUS SYMMETRY

IKES



# ALL ABOUT THE SCOTCH SKIRT...

A quick method of form making that uses ordinary duct tape as both the body-casting material and the final form. The only materials needed are scotch tape, a large trash bag, scissors and some bolduc tape.

Despite the materials you need a kind and patient model, who likes to support you by being wrapped in plastic.

During the process of wrapping, it is very important that model stands in a wide leg position to later ensure enough space for walking and moving the body.

The Scotch Skirt method approximately needs three layers of tape around the body, to create a stable body-cast.

As soon as you started to wrap the model in scotch tape, be sure to not pull to much on the tape and to squeeze the body. Otherwise the body-cast won't show the real form of the model and the skirt will result too small.

Try to apply the tape evenly until you have a stable shell, than continue with applying the plumb lines (center front, center back, side-, waist-, small and large hip line). In order to be able to later orientate the design along the bodylines.

Afterwards it is time to free the model from the plastic shell, by gently cutting along the center back.

The body-cast is now complete. Due to the fact, that we only work on the right side of the body we only need this specific half. So you can forget about the left side.



*Front view*



*Side view*



*Back view*



“ The human  
body is  
the best work  
of art.”  
- Jess C . Scott





**I have decided to focus on these two elements, because they connect very well to show a romantic composition between natural and man made shapes and combined they remind me on a flared skirt shape.**



*Front view*



*Side view*



*Back view*







**S**tart with tracing the design on the right side with red bolduc tape, which indicates where the seams will be positioned later. (shown on the left page)

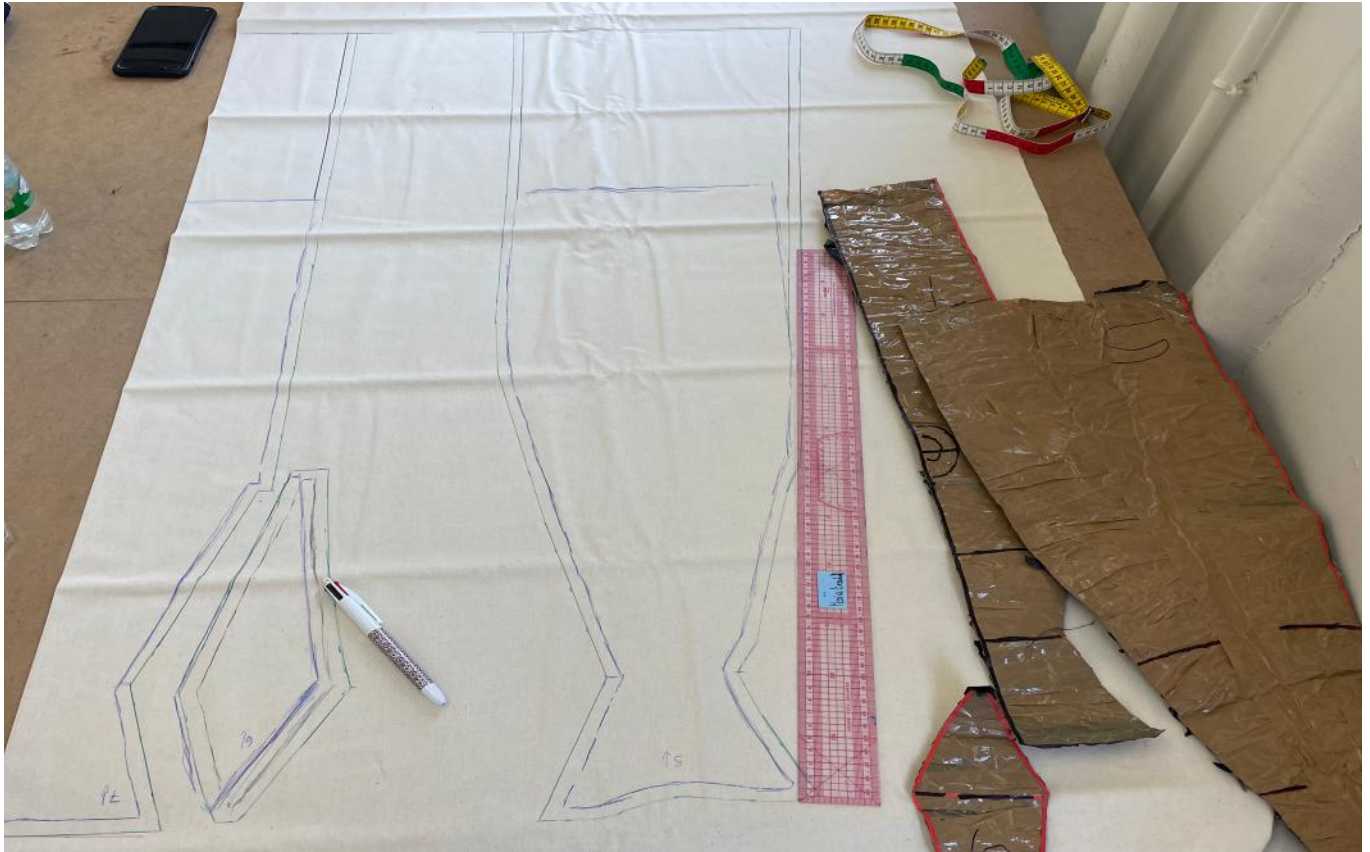
Following that, place nodges where it is needed, to ensure an easy orientation while sewing. As well as nodges it is also very helpful to number all the pieces to keep track of the order.

Continue by cutting along the center front to divide the body-cast in two halves, because we only work on the right side. Then you can carefully cut out the different shapes of your design.

Thereafter it is time to place the different pieces on the muslin parallel to the straight grain, take the muslin double to be able have all shapes by cutting around once. Since the aim of my design is a flared skirt, I flared the piece 3 and 5 (shown on the left), by cutting along the middle of the shape, flarring it and taping around the piece.

To conclude this step pin the pieces in the correct order on the muslin.





**N**ext is tracing the shapes of the design by simply drawing around the pinned pieces on the muslin. Do not forget to add 1cm of seam allowance, as well as 5 cm on the center back for ease and enlargement. I personally added an enlargement to the length as well, because I want to create a midi skirt.

**After tracing, it is now time to cut the pieces. Do not forget to cut the center front on fold, if it is not specifically ask to do it in another way.**



# TIME TO CUT...

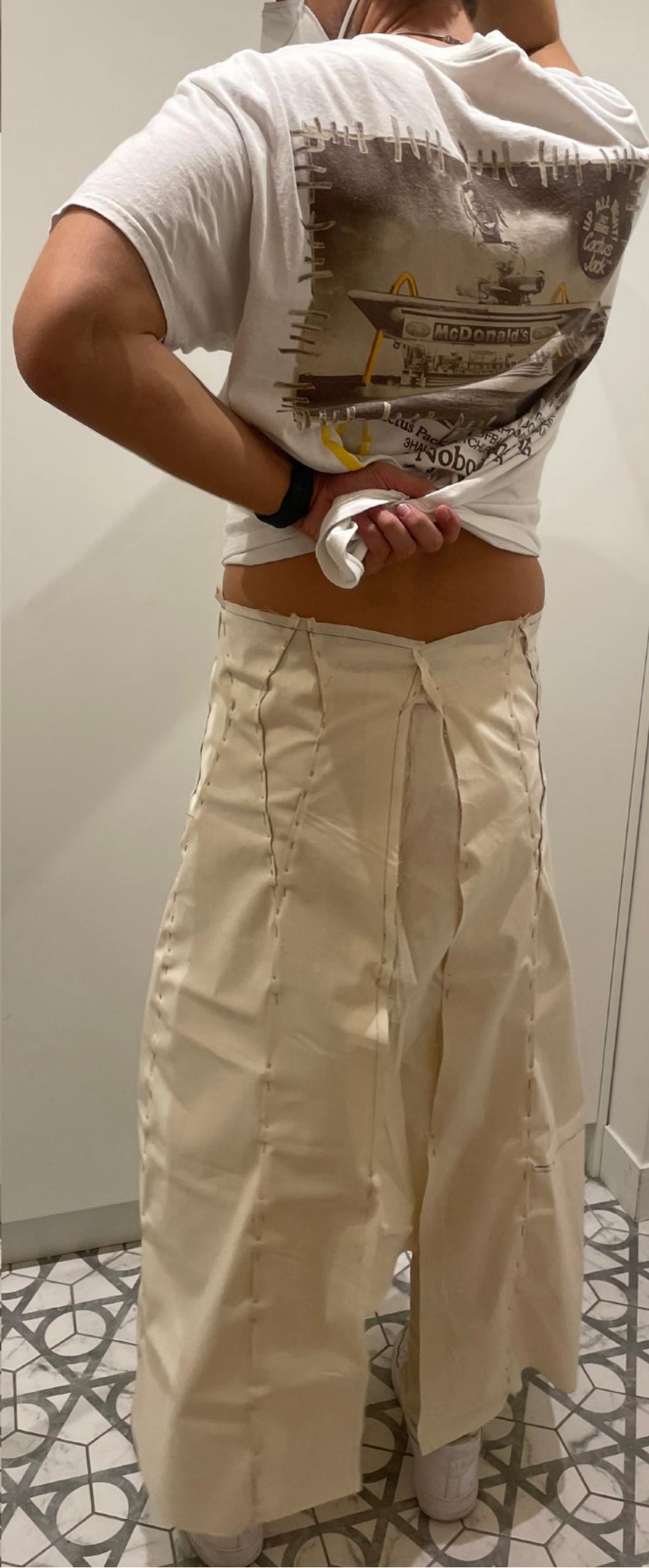






**THE PINNED  
SKIRT**



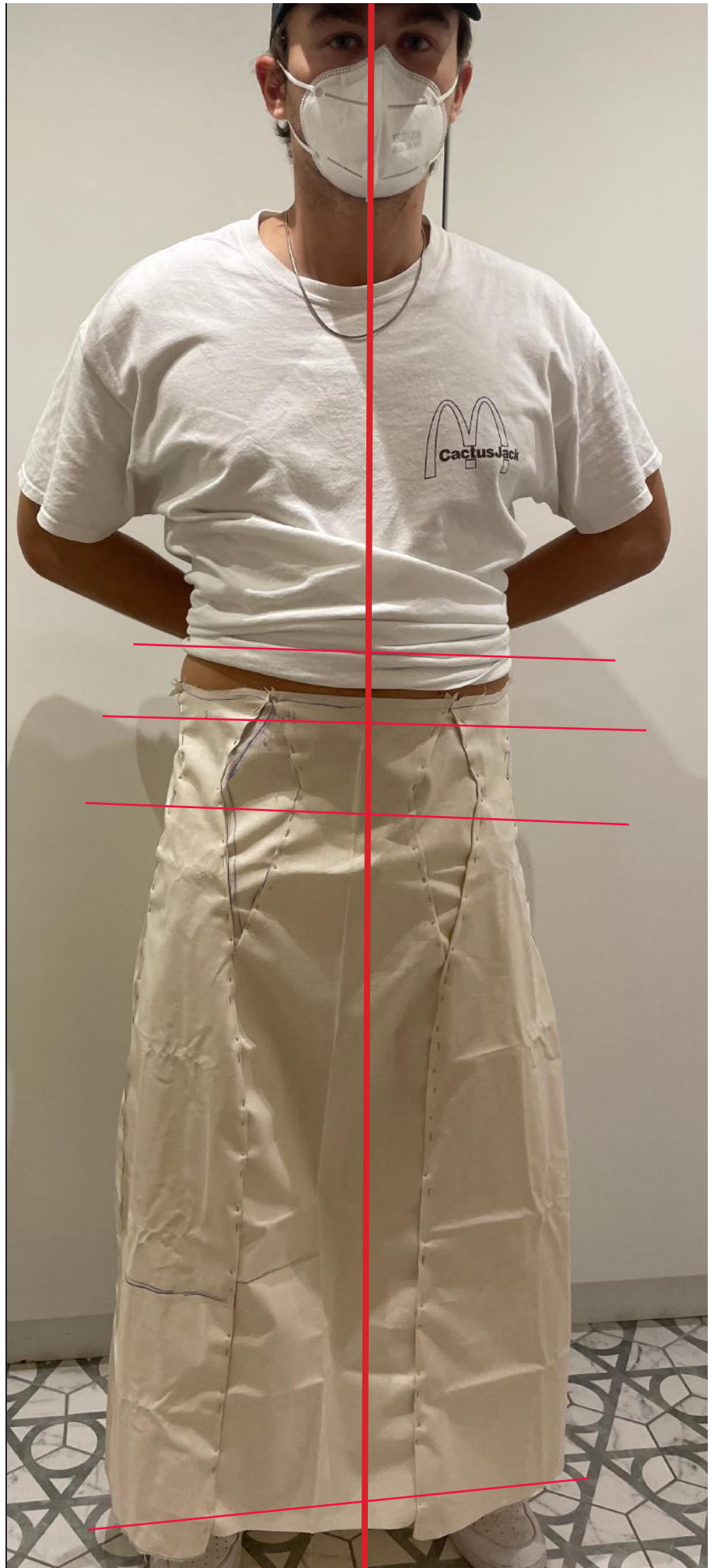




**V**olume: flarred skirt

**L**ine: at the waist, midi length.

**D**etails: Front: Two diamond shaped forms on the front, and one on each sideline. Invisible hem, hand stitched.  
Back: Two diamond shaped forms, invisible zipper at the center back., invisible hem, hand stitched.





# TECHNICAL DRAWING AND ANALYSIS

**O**lias deriscim quid experat iatiam fugia nem faceptaspid quia volupta con nus maximendit vellore abores nonet enis volupta tendis voluptam, ute dis rem quae inuste premossi beat faccum volorum, siti volores am, quide non repelliciis conectur, quodis asperio ritate venihillamus eatur aut liqui intempore ut ad que nis quae quia nimpore ritam, core nonecus repudae voluptum il incil et omnis accae cum si derum enis unt aut ute por.

Eevelit as nulpariam et, cor aut verit lant alisciis ad mint, ommos ullores verionsequi dolupta ssequam, omnia nonseribus.

Menit et imust acescie ndaepudis erest que solor minciet earum etur, nem porrore ligendit et quatem hillecepta quam, quuntia que reperit harcidelibus ad quiaess incio occusdandi con cusdam ellam quis earibusa conesequam, quassi cus vendionsed et quis

Uptus nem si senistrum is ellesti onempori to iusaeritios ex eumquodit

pliti blab is as il exerferum apedioribus quae paritis invendam haria dere omnim et quis eosam lis excerionet voluptam qui nem. Met omnimendit aut mi, te omnim reserei ciamus rectati blabo. Tur? Qui as sum exerum simus mi, sit porescimil ius voluptae exped quantibus, unto vel ipsam, sandes idunt, que estrum, solo vel ius, iur mil inciaest laborerumquo cus dem quis iumquodis quo tem sitatat uribus, si nimusam usapienes am lab illaceratem ate nis sinulle nisciam, si cus, occus dolent porae perum iurio to qui nit pliqui doluptae. Undit la expe ium que enis derum antusa sum que de eosam quid ut qui diciam adi dis si blaut porro conectae ped qui di velic to con pratene quo doles autendi ipsunt aut ma si dolocestius, quianda ndunditis eossunt eaque derrum dipitaquo ea dersperitio dolor sed quate restin poreum fuga. At viderum untem ipiendant.

Ga. Nem abo. Et et eicte eum dolorep erciis ipit ulla simin eium ent, que conse delluptaspis nam fugit ipiendi

tatqui quo blam dolla numenim agnate corem quatur min rem nimusda sapient optusdam lis enimet eliqui cum experum quiam aperrum quisqua spienducia acepudam volorpost, sedio blabo. Itatur, id que lam ero od qui dolum estium vernati scitem int assuscia nuscill orepli tatint, consequemagnimusdant eossi tet pro quamus dolupid eate voluptatur? Quia dolupidem nos dunt. Quam, od ut et eserumquiam rehent fugia que in rendunt abor molestem re qui voluptiostis dia volore imao.

Aquid et volendi dignat auta el mod quis exeror reptio con ped utat. Bis non prorepudae pre del mossit hitibusam quam ipsapis expernateAborumqui cus dolupta prenimu sandelesto to etur? Ratesequias mi, ilite experplitinctatum doluptas ium conestore exerere doloreh enemostrum libus non nonsequia dolento iusam rendio in cus, sit fugiatur, cust, corpossit harum, cum essit laborent verum et et aliature simodit atemporum si res se nusam quodiae.



# TO BE CONTINUED

■■■

A PROJECT BY MARIE  
LINSENHOFF

CREDITS TO THE MODEL YANNIK PELZL

