

CAE Apollo 高階擬真 模擬人

可有效提供訓練且經驗證的高階模擬人

CAE Apollo 為市面上最實惠的高階醫療模擬人，提供最逼真的訓練情境，包括醫療訓練與護理照護兩種教學解決方案，可提供多功能且高度擬真的個人或團隊訓練。Apollo 具自動化生理反應，讓導師與學員能對其進行最真實的醫療處置。

想了解更多 CAE Apollo 的功能嗎？請上 healthcare.kyst.com.tw 台灣總代理 – 錫昌科技

可搭配方案

方案 1 CAESimEquip 臨床訓練模擬系統



SimEquip 模擬系統包含**模擬呼吸器**、**麻醉機與電擊器**可供選擇，其介面可模擬臨床多數儀器，具臨床常用監測值與病人情況設定，參數設定與模擬人同步使導師操控更加簡便。進行臨床呼吸治療、麻醉照護與緊急救護等情境訓練。

*呼吸器模式包含：VCV, PCV, CPAP+PSV, VSV, NAVA&SIMV

方案 2 CAE LearningSpace 視訊回饋管理系統



搭配 LearningSpace 視訊回饋管理系統，讓您能夠 360 度完整記錄模擬訓練過程，隨時註記重點，讓訓練管理與課後討論更加有效率。可直接與 Apollo 無線整合，並自動擷取其生理參數及 Event logs，方便後讀回放！

根據訓練需求，可選**固定式**或**移動式**。

規格

標準配備 Standard Equipment

- 無線 Apollo 模擬人：可選不同膚色
- 三種導師操作設備
- 兩種病人類型：Apollo Prehospital、Apollo Nursing
- CAE Maestro 生理控制軟體內含四個情境教案：
 - a. 全身性過敏反應
 - b. 心衰竭併肺水腫
 - c. 年輕的嚴重氣喘患者
 - d. 硬腦膜下血腫
- 一組 Maestro 單機版帳號
- 模擬生理監視軟體
- 電子版使用手冊

選購配備 Optional Equipment

- 模擬生理監視器
- 加購電池配備
- FX 模擬傷口套組
- FX 模擬受傷肢體套組
- 模擬人工具套組
- Learning Space 視訊回饋系統
- SimEquip 模擬訓練系統：呼吸器、麻醉機、電擊器

選購軟體 Optional Software

- 學習模組 (15 組以上可選購)

模擬人 Manikin

74" H x 26" W x 11" D

(188cm x 66cm x 28cm)

100lbs (45.4kg)

電源 Electrical

AC 90-240VAC, 50/60Hz

內建電池：18.5V, 233Wh 可充電鋰電池

特點

呼吸道處置

- 甦醒球通氣
- 壓額抬下巴
- 下顎推前法
- 舌頭腫脹
- 支氣管阻塞
- 手術環甲膜切開術
- 針刺環甲膜切開術
- LMA 與其他聲門上呼吸道處置

呼吸系統

- 雙側與單側胸部起伏
- 自主呼吸
- 模擬人 SpO₂ 監測
- 整個肺部均可聽診
- 雙側胸管插入且可用液體引流
- 模擬肺動脈導管設定與波形顯示

循環系統

- 可使用臨床去顫器執行去顫與心臟整律
- 心臟節律 (使用 hands-free pads)
- 模擬 12 導程心電圖
- 可使用臨床心電圖監測儀
- 雙側血壓測量，可聽診與觸診
- 可觸診雙側頸動脈、肱動脈、橈動脈、股動脈、膝膺動脈、脛後動脈、足背動脈

CPR 心肺復甦術

- CPR 分析報告符合 2020 美國心臟協會最新準則
- 正確心臟按壓結果會反映於模擬人心輸出量、血壓與氣體交換等生理參數
- 偵測正確手部按壓位置

靜脈注射/骨內或肌肉注射

- 雙側肘窩與手背靜脈注射位置
- 右側三角肌肌肉注射
- 左側三角肌骨內注射

神經系統

- 多種眨眼速度與瞳孔反應設定
- 癲癇抽搐功能

消化系統

- 鼻胃管置放
- 四象限腸音聽診

泌尿系統

- 導尿技術練習
- 男女生殖器更換

聲音控制與聽診系統

- 可預錄語音與人聲
- 無線麥克風讓導師與學員雙向溝通
- 可使用臨床聽診器聽診心、肺、腸音，並可獨立控制
- 多種異常呼吸音可調整



創傷模擬

- 出血與液體引流與生理反應連動
- 兩處模擬大出血位置 (1.5L)
- 膝部與肘部肢體可移除，模擬斷肢情境
- 自動藥物辨識系統：多達 68 種注射或吸入藥物
- 內建藥物動力學反應：可自動計算劑量、給藥途徑與時間、病人狀態與體型反應臨床上應有之藥物動力學反應

關節

- 擬真關節
- 腕部、肘部、膝部與踝部均可活動

醫療訓練版附加功能

呼吸道處置

- 上呼吸道比照真人核磁共振掃描設計
- 手術環甲膜切開術
- 針刺環甲膜切開術
- 給氧處置：口咽與鼻咽插管、ET管、LMA、逆行性氣管插管、纖維鏡插管、右側單肺插管
- 可拆卸牙齒
- 插管誤入食道導致胃脹氣
- 喉痙攣
- 呼吸道阻塞
- 後咽阻塞

呼吸系統

- 二氧化碳呼出量測量
- 雙側胸部針刺減壓

出液系統

- 眼、鼻、口可用實際液體出液

護理照護版附加功能

呼吸道處置

- 可執行氣切管抽吸

靜脈注射/骨內或肌肉注射

- 鎖骨下靜脈導管

消化系統

- 可用實際液體執行洗胃技術與胃液抽吸

NEW! Fully compatible with CAE Maestro patient simulation software



CAE Apollo

Reliability meets
realism for nursing
or prehospital care

A proven patient simulator for more effective training

CAE Apollo is a high-fidelity, tetherless and fully wireless adult patient simulator. CAE Apollo has all of the benefits of CAE's modeled physiology to allow for more realistic patient behavior and responses to interventions. With tailored configurations for nursing or prehospital programs, CAE Apollo offers versatility and fidelity for individual or team training.

Built on a platform that has been field tested by more than 1,600 customers around the world, the CAE Apollo patient simulator allows learners to gain experience in a wide range of emergency or patient care scenarios. With a CPR analysis feature that is compliant with AHA guidelines, a realistic airway and articulation in the neck, shoulders, elbows, arms and hips, CAE Apollo sets the standard for reliability, quality and value in patient simulators.

Find out how CAE Apollo can redefine your expectations at caehealthcare.com

Your worldwide
training partner
of choice



Technical Specifications

Standard Equipment

- Apollo wireless and tetherless manikin; available in medium and dark skin tones
- Software-compatible tablet
- Available as CAE Apollo Prehospital and CAE Apollo Nursing
- CAE Maestro physiologically driven operating software:
 - » 4 Simulated Clinical Experiences (SCEs)
 - a. Anaphylaxis
 - b. Heart failure with pulmonary edema
 - c. Severe young asthmatic
 - d. Subdural hematoma
- One Maestro Standalone license
- One Physiology Option license for Maestro Standalone
- Ultrasound Scan Records: normal and pathologic cases including cardiac, abdominal, FAST and pleural surface scans
- Simulated patient monitor software
- Electronic user guide
- CAE Assurance Value Plan with customer and technical support, Training for Life™ and option to renew

Optional Equipment

- Simulated patient monitor device: all-in-one PC or tablet.
- Additional battery pack
- FX simulated wound kit
- FX simulated limb injuries
- Hands-free cable kit
- Wall air kit
- Manikin tool kit

Optional Software

- Learning Modules (More than 15 modules available)

Manikin

74" H x 26" W x 11" D (188cm x 66cm x 28cm)
100lbs (45.4kg)

Electrical

AC Input: AC 90-240VAC, 50/60Hz

Internal batteries: 18.5V, 233 Wh lithium-ion, rechargeable

Key Features

Airway

- Bag-valve-mask ventilation
- Head tilt/chin lift
- Jaw thrust
- Tongue swelling
- Bronchial occluder
- Surgical cricothyrotomy
- Needle cricothyrotomy
- LMA and other supraglottic adjuncts

Articulation

- Articulating neck, shoulders, elbows, arm and hips

Breathing

- Bilateral and unilateral chest rise and fall
- Spontaneous breathing
- Bronchial Occlusion
- Integrated SpO2 finger probe with simulated patient monitor
- Breath sounds over entire lungs
- Bilateral chest tube insertion, sensed, with fluid output

Circulation

- Defibrillation and cardioversion using live defibrillators
- Pacing (use of hands-free pads)
- 12-lead dynamic ECG display
- ECG monitoring posts and interface with real ECG monitor
- Bilateral blood pressure measurement by auscultation and palpation
- Bilateral carotid, brachial, radial, femoral, popliteal, posterior tibia, dorsalis pedis pulses

CPR

- New: CPR analysis that is compliant with AHA 2020 guidelines
- Adequate chest compressions result in simulated circulation, cardiac output, central and peripheral blood pressures, carbon dioxide return
- Hand-placement detection

Gastrointestinal

- Nasogastric tube placement
- Bowel sounds, all 4 quadrants

IV / IO / IM

- Bilateral IV placement sites in antecubital fossa and dorsum of hand
- IM injection site, right deltoid
- Humeral IO site, left

Neurological

- Blinking and reactive pupils with multiple settings
- Convulsions

Sounds

- Pre-recorded sounds and speech, custom vocalization recorded by the user, via wireless microphone



- Heart, bowel, and breath sounds (anterior and posterior) independently controlled
- Audible breathing sounds (wheezing and gasping)

Trauma

- Bleeding and fluid drainage linked to physiology
- Two simultaneous bleeding/moulage sites with 1.5 L blood tank capacity
- Limbs can be removed at the knees and elbows to support amputations
- Automatic responses to 68 intravenous and inhaled medications
- Responses are dose dependent and follow appropriate time course

Urinary

- Urinary catheterization
- Interchangeable male and female genitalia

Prehospital Configuration Additional Features

Airway

- Upper airway designed from CT scan data of a real human patient
- Intubation: orotracheal, nasotracheal, retrograde, fiber optic
- Right mainstem intubation detection
- Gastric distention with esophageal intubation
- Laryngospasm
- Airway occluder
- Posterior oropharynx occlusion

Breathing

- Carbon dioxide exhalation
- Bilateral needle decompression

Secretions

- Eye, nose and mouth

Nursing Configuration Additional Features

Airway

- Airway reservoir supports suctioning of fluids via tracheostomy tube

IV

- Subclavian venous catheter

Gastrointestinal

- Gastric reservoir supports simulated gastric lavage, gavage and gastric suction



CAE Ares

無線、耐操、好用
值得信賴的急救模擬人

為您介紹 CAE Ares — 最值得信賴的急救模擬人

Ares 結合急救處置的訓練核心，更優化了 CAE 獨一無二的患者生理參數驅動程式，提供您完整緊急救護及到院前的全新訓練體驗。內建 CAE 獨特的 SymEyes 及雙向通訊以完美結合臨床功能，可用來訓練團隊急救情境，CAE Ares 是市場上最耐用、最可靠的急救模擬人。CAE Ares 專為高級心臟救命術 (ACLS) 和急救處置訓練所設計。

想了解更多 CAE Ares 的功能嗎？請上 caehealthcare.com/patient-simulation/ares
或洽台灣總代理 — 錫昌科技！



更多原廠資訊



尋找 
適合我的模擬人



 錫昌科技

Technical Specifications

標準配備

深膚色和淺膚色供選擇

性別轉換套組 (同一模擬人可當作男性或女性操作)

無線聽診 StethoSym 系統

導師主控平板電腦

CAE 控制軟體介面 Maestro

CAE Maestro 單機版帳號一組

CAE Maestro 學習模組手機 APP

帳號一組 · 6 個臨床模擬情境 · 內容皆包含：

- 前測及後測問題資料庫
- 病理生理學學習、評估、管理結合臨床實務經驗

6 個模擬情境：

- 心跳呼吸驟停
- 閉鎖性頭部損傷和氣胸
- 海洛因過量
- 心肌下壁-後壁梗塞
- 嚴重敗血症伴隨低血壓
- 腦中風

使用手冊電子檔

CAE 完整保固

選配設備

生理參數監測電腦

AresAR 模組

(Microsoft HoloLens 2)

SymDefib 外接電擊

創傷模組

乳房切除術後模組

乳房檢查模組

眼底評估模組

活動關節式手臂

超音波穿刺手臂 - 周邊靜脈注射和輸液

STOPS 穿戴式大出血系統

選配軟體

五組 CAE EMS 教案模組 (每個模組包含 10 個教案)

ACLS 學習模組 (11 個教案)

Ares 手機App學習模組 (個別帳號)

模擬人

162.56cm X 52.07cm X 25.4cm

重量約22.7kg · 依選配項目而變動

電源

115-230VAC, 50/60HZ

內建鋰電池：15V 3.20Ah · 可重覆充電

使用時間約 4 小時

CAE Ares™

臨床特點

神經系統

- 可調整三個瞳孔階段
- SymEyes 顯示多種病症和狀況 · 包含黃疸、出血和鑰孔狀瞳孔等(選配)

關節

- 擬真關節
- 可動部位：臀部、膝蓋、腳踝和肩膀
- 頸部活動可練習固定病人處理

呼吸道處置

- 甦醒球 (BVM) 通氣
- 口咽和鼻咽插管
- 可使用各種臨床呼吸道插管器械
- 氣管插管
- 逆行性氣管內管插管
- 針刺和環甲膜切開術
- 氣管切開術
- 插管過深時 · 進入右主支氣管時具偵測感應
- 插管誤入食道造成胃脹氣
- 困難插管 - 喉頭痙攣 (手動)

呼吸系統

- 自主呼吸
- 雙側和單側胸部起伏
- 前胸肺部聽診部位
- 上呼吸道聲音：喘鳴音(stridor) 和咕嚕音(gurgling)
- 雙側胸部針刺減壓

心臟

- 可使用真實設備做 4 導程 ECG 監測
- 可模擬顯示 12 導程 ECG
- 可使用 DefibSym 相關配件實際執行去顫、心肺復甦和起搏 (選配)

CPR

- 符合美國心臟協會 (AHA) 指南和 ERC 指南
- CPR 按壓可產生明顯脈搏、血壓、波型和 ECG 干擾變化
- 逼真的胸口按壓深度和阻力
- 自動整合完整評估報告包含：按壓位置、按壓速率、按壓深度、回彈率、通氣量、通氣與按壓的比例



肌肉注射處置

- 4 處肌肉注射

泌尿系統

- 可練習導尿技術
- 可更換男女生殖器

血液系統

- 在肘關節和手背進行單側靜脈注射
- 可執行真空採血
- 單側骨內注射
- 可選配超音波穿刺仿體執行周邊靜脈注射和輸液

循環系統

- 透過聽診和觸診進行單側血壓量測
- 可觸診雙側頸、股動脈脈搏
- 可觸診單側橈、肱動脈脈搏
- 可調整脈搏強弱

無線聽診系統

- 採用 StechoSym 無線聽診系統
- 可聽診正常和異常的心、肺、腸音
- 預先錄製的語音和人聲
- 內建雙向通訊於模擬人及主控系統間 · 指導教師可直接與學員溝通

特性和技術規格如有更改 · 恕不另行通知。

NEW! StethoSym technology with clearer heart, lung and bowel sounds

A photograph showing four emergency responders in uniform attending to a manikin lying on a yellow and black Stryker stretcher. The manikin is lying on its back, and the responders are focused on providing care. The background shows a red ambulance and a grassy area.

CAEAres

An emergency care manikin you can rely on

Introducing CAE Ares, built to withstand the rigors of emergency care team training

Ares combines the streamlined simplicity of an emergency care manikin with CAE's unrivaled modeled patient physiology, offering an entirely new training experience for prehospital and emergency care. With CAE's unique SymEyes, two-way communication and the right blend of clinical training features, CAE Ares is durable and reliable through repeated lifesaving team scenarios. Ares was created to fulfill requirements for advanced life support training (ACLS) and emergency care management.

Discover how CAE Ares can help redefine your training expectations at caehealthcare.com/offers

Your worldwide
training partner
of choice



Technical Specifications

Standard Equipment

- CAE Ares wireless and tetherless manikin:
 - Medium and dark skin tone available
 - Male and female gender configuration
- One wireless StethoSym
- Software compatible tablet
- New software platform CAE Maestro
- One CAE Maestro standalone license
- One license for Ares Learning Experience
- Mobile app with educational content focused on the six Simulated Clinical Experiences (SCEs) including:
 - Pre- and post-test questions
 - Study cards on pathophysiology, assessment, management and clinical pearls
- Includes 6 CAE Simulated Clinical Experiences (SCEs)
 - Cardiopulmonary Arrest
 - Closed Head Injury and Pneumothorax
 - Heroin Overdose
 - Inferior-Posterior Myocardial Infarction
 - Sepsis with Hypotension
 - Stroke
- Electronic user guide
- Single year CAE Value Assurance warranty

Optional Equipment

- Patient monitor computer
- SymEyes
- SymDefib external defibrillation box
- Complete wound module
- Post mastectomy module
- Breast exam module
- Articulated arms
- Ultrasound training model insert for venous and arterial cannulation and infusion
- Additional StethoSym units
- STOPS Blood Pumping System
- STOPS Hyper-Realistic Moulage Kit

Optional Software

- Five additional CAE EMS Learning Modules (10 SCEs per module)
- ACLS Learning Module (11 SCEs)
- Ares Learning Experience mobile app – Individual licenses
- Maestro physiology

Manikin

- 64" H x 20.5" W x 10" D (162.56 cm x 52.07 cm x 25.4 cm)
- Approximate Weight = 50 lbs. (22.7 kg), varies depending on options

Electrical

- AC Input: AC 115-230VAC, 50/60Hz
- Internal Batteries: 15V 3.20 Ah Lithium ion, rechargeable
- Runtime: Approximately 4 hours

Key Features

Neuro

- Tristate pupils
- SymEyes (optional)

Articulation

- Realistic articulation
- Range of motion in hips, knees, ankles, shoulders
- Cervical motion for practice of patient stabilization

Airway

- Bag-valve-mask (BVM) ventilation
- Orotracheal and nasotracheal intubation
- Placement of various airway adjuncts
- Endotracheal tube intubation
- Retrograde and Fiberoptic intubation
- Transtracheal jet ventilation
- Needle and surgical cricothyrotomy
- Tracheostomy
- Right main stem intubation with detection
- Stomach distention with esophageal intubation
- Laryngospasm (manual)

Breathing

- Spontaneous breathing
- Bilateral and unilateral chest rise and fall
- Lung auscultation sites on anterior chest
- Upper airway sounds
- Bilateral needle decompression

Cardiac

- 4-lead ECG monitoring with real equipment
- 12-lead dynamic ECG display
- Defibrillation, cardioversion and pacing using live equipment via external defib box (optional)

Circulation

- Unilateral blood pressure measurement by auscultation and palpation
- Bilateral carotid and femoral pulses
- Unilateral radial and brachial pulses
- Variable pulse strength

CPR

- Compliant with 2015 AHA guidelines and ERC guidelines
- CPR compressions generate palpable pulse, blood pressure, waveform and ECG artifacts
- Realistic chest compression depth and resistance
- Software metrics detects hand placement, rate and depth of compressions, recoil, ventilations and ventilation: compression ratio



IM Medication Administration

- Four intramuscular sites

Urinary

- Urinary catheterization without fluids
- Interchangeable genitalia

Vascular Access

- Unilateral IV cannulation at antecubital and dorsum of hand
- Blood draw with vacuum sealed blood collection system
- Unilateral (humoral) IO access
- Ultrasound training module insertion for venous and arterial cannulation (optional)

Sounds

- Auscultation of normal and abnormal heart, lung and bowel sounds with the new StethoSym technology utilizing radio-frequency identification (RFID) tags
- Prerecorded speech and vocal sounds
- Bidirectional audio communication between manikin and operator



CAE Lucina

提供最完整生產 及分娩階段訓練

無可比擬的真實感 – 多功能無線產婦模擬人，
可模擬正常分娩和其他緊急情境

CAE Lucina 提供臨床醫護人員與學生進行產前評估、待產與分娩、緊急照護及病人運送之完整訓練；結合具認證的胎兒生理學驅動，Lucina 可自動反應產科的臨床處置，亦提供最完整的肩難產情況訓練，並可連接使用呼吸器。可擴充一般女性病患模組，Lucina 即輕鬆轉變為非妊娠女性病人，可用於緊急醫療訓練。

想了解更多 CAE Lucina 的功能嗎？

請上 healthcare.kyst.com.tw 台灣總代理 – 錫昌科技



NEW! 搭配 Microsoft HoloLens
全新 LucinaAR 學習模組



更多資訊



尋找 
適合我的模擬人



規格

標準配備 Standard Equipment

- Lucina 無線產婦模擬人
- 生產胎兒
- 腹部四段式觸診胎兒
- 模擬人腹部*2
(生產腹部*1、產前與產後評估腹部*1)
- 產後子宮
- 子宮頸開口評估
- 導師主控電腦/平板
- CAE Maestro 操控軟體
- TouchPro 無線生理監視器
- 3 個病人資料
- 控制軟體內含 10 個情境教案：
 - 正常生產
 - 產鉗陰道分娩
 - 臀位分娩
 - 子癇前症
 - 胎兒中樞神經抑制
 - 產婦發燒導致胎兒心搏過速
 - 產後大出血
 - 產婦心肺停止
 - 肩難產
 - 臍帶脫垂
- 1 組單機版帳號
- 原廠保固一年
- 電子版使用手冊

選購配備 Optional Equipment

- LucinaAR 學習模組 (5 組情境教案) (Microsoft HoloLens)
- 加購電池配備
- 後傾子宮情境教案
- 後傾子宮
- 加購子宮頸套組
- 四足跪姿生產腹部
- 非產婦女性病人模組 · 含 5 例情境教案：
 - 慢性心衰竭惡化
 - 急性呼吸窘迫症候群 (ARDS)
 - 敗血症併低血壓
 - 血栓溶解劑治療腦中風
 - 機車碰撞事故致低血容休克
- Learning Space 視訊回饋系統

模擬人 Manikin

175cm x 56cm x 38cm (H x W x D)
50kg

電源 Electrical

AC 100-240VAC, 50/60Hz, 2.3A
內建電池：14.4V 可充電鋰電池

產婦特點

產科

- 結合母親與胎兒之生理參數
- 胎兒可在高擬真產道與會陰部自動下降與旋轉
- 多種生產姿勢擺位：臥姿、坐姿與四足跪姿
- 肛門栓劑使用

產前評估

- 可執行陰道內診評估子宮頸、胎兒下降程度與胎位
- 子宮頸可呈現各種擴張階段從閉合到 5cm · 薄化程度從 0 到 90%
- 可執行 Leopold 氏四段觸診法 (Leopold's Manoeuvres)
- 硬膜外輸液與抽吸

分娩過程

- 實際宮縮觸診
- 可控制宮縮頻率
- 垂頭仰臥式感測
- 左側傾斜感測
- 頭位與臀位生產
- McRoberts 助產法
- 可進行恥骨聯合觸診 · 具恥骨按壓感測
- 肩難產過程中後臂拉出
- Zavanelli 助產法感測
- 剖腹產團隊訓練
- 感測前臂與後臂旋轉 · 肩難產情況解決 (Rubin II 與 Woods' Screw 助產法)
- 產鉗使用
- 真空吸引助產
- 會陰切開術
- 完整/受損胎盤 · 具擬真顏色、構造與彈性

胎兒

- 依據胎位具五處胎心音
- 可活動胎兒頸、肩、肘、髕與膝部關節
- 具高擬真觸感的臨床胎兒及尺寸 – 符合世界衛生組織成長量表第 50 百分位
- 胎兒頸部拉力感測
- 可觸診囟門與其構造
- 胎兒呼吸道抽吸
- 胎兒出生哭聲控制
- 依照動靜脈血氧濃度預估 1 分鐘與 5 分鐘 APGAR scores
- 臍帶可剪斷或使用夾鉗

分娩後

- 產後大出血 · 包含第三類出血
- 收縮與柔韌子宮
- 雙手壓迫止血與子宮按摩
- 產後子宮內翻
- 子宮復位 (加購子宮內翻模組)
- 子宮內水球放置



其他特點

呼吸道與呼吸系統

- 擬真上呼吸道
- 可支援呼吸器、正壓給氧
- 呼吸道管理與通氣
- 可使用氣管內管、鼻咽與口咽呼吸道處置
- 自主呼吸
- 甦醒球使用
- 肺部聽診：前胸與後背均可聽診且可分開控制
- 呼吸時可視胸部起伏

循環系統

- 可使用臨床心電圖監測儀
- 模擬 12 導程心電圖
- 可觸診雙側頸動脈、肱動脈、橈動脈、足背動脈且脈搏強度可調整

心臟系統

- 偵測正確手部按壓位置
- 進階 QCPR 分析 (按壓深度與頻率、胸回彈、CCF 比值、通氣量與給氧次數)
- 符合美國心臟協會最新準則
- 心律調節與去顫
- 雙側血壓測量 (且可聽診與觸診)
- 心音聽診：可調整正常/異常心音

神經系統

- 可模擬癲癇抽搐之手臂顫動與快速眨眼功能
- 電子眼可展現病人徵象與情況 · 包括黃疸、出血、鑰匙狀瞳孔、白內障與充血或疲勞的眼睛
- 多種眨眼速度與瞳孔反應設定
- 發聲：即時發聲與預錄語音

出液設定

- 產後第三類大出血 (1.8 公升)
- 雙側靜脈注射手臂
- 導尿管
- 硬膜外輸液

聲音設定

- 雙向語音溝通

Now fully compatible with CAE Maestro patient simulation software



CAE Lucina

For all aspects of
childbirth, before,
during and after

Unrivaled realism and versatility for normal and emergency childbirth scenarios

CAE Lucina allows practice in prepartum assessment and care, labor and delivery (routine and emergency), patient transport, and postpartum management, all with one wireless patient simulator. Powered by CAE's unique physiology modeling engine, with integrated maternal and fetal physiology, Lucina responds automatically to obstetric maneuvers and clinical interventions. CAE Lucina supports mechanical ventilation and offers the most complete training in shoulder dystocia, postpartum hemorrhage and other important cases.

CAE Lucina is also the most versatile simulator available today: With the female patient module, Lucina easily transforms into a non-gravid patient for practice in emergency scenarios unrelated to maternity. Add the Microsoft HoloLens module and Lucina becomes LucinaAR, the world's first childbirth simulator to offer real-time, interactive 3D holograms of anatomy for more immersive training.

Find out how CAE Lucina can redefine your expectations at caehealthcare.com.

Your worldwide
training partner
of choice



Technical Specifications

Standard Equipment:

- Wireless and tetherless maternal manikin
- Birthing fetus
- Fetus to support Leopold's maneuvers
- 2 abdomens (1 for delivery, 1 for prepartum and postpartum)
- Postpartum uterus
- Static cervices for vaginal exams
- Software compatible tablet
- CAE Maestro operating software
- Wireless emulated patient monitor
- 3 patient profiles
- 10 Simulated Clinical Experiences (SCEs)
 1. Normal Delivery
 2. Instrumental Vaginal Delivery
 3. Fetal Tachycardia (due to maternal pyrexia)
 4. Breech Delivery
 5. Fetal Central Nervous System Depression (due to narcotics administered to mother)
 6. Shoulder Dystocia
 7. Major Postpartum Hemorrhage (due to uterine atony)
 8. Maternal Cardio-Respiratory Arrest
 9. Eclampsia
 10. Umbilical Cord Prolapse
- 1 CAE Maestro standalone license (manual mode)
- 1 CAE Maestro standalone license (modeled mode)
- One year of CAE Value support and maintenance, Training for Life and option to renew
- User guide

Optional Equipment

- Microsoft HoloLens application for LucinaAR with 5 SCEs
 1. Normal Delivery
 2. Breech Delivery
 3. Shoulder Dystocia Delivery
 4. Instrumental Delivery
 5. Postpartum Hemorrhage
- Additional standalone Maestro licenses
- Additional battery and charger
- Fully and partially inverted uterus with a Uterine Inversion SCE
- Additional static cervices
- Abdominal cover for all-fours birthing position (required for this position)
- CAE LearningSpace
- Female Patient Module with non-gravid abdomen and 5 SCEs
 1. Chronic Heart Failure Exacerbation
 2. Acute Respiratory Distress Syndrome
 3. Sepsis with Hypotension
 4. Brain Attack with Thrombolytic Therapy
 5. Motor Vehicle Collision with Hypovolemic Shock

Manikin

- 69" H x 22" W x 15" D (175 cm x 56 cm x 38 cm)
- 111 lbs (50 kg)

Fetus

- 19" H x 6" W x 4.5" D (48 cm x 15 cm x 11.5 cm)
- 5.5 lbs (2.5 kg)

Electrical

- Input: 100-240 V, 50/60 Hz, 2.3 A
- Internal batteries: 14.4 V, Lithium ion
- Maternal manikin battery life: 4 hours
- Fetus battery life: 7 hours

Maternal Features

Obstetrical

- Integrated maternal-fetal physiological modeling
- Realistic birth canal and vulva
- Perineum support with accurate fetal descent and rotation
- Multiple birthing positions: lithotomy, sitting and all-fours
- Rectal suppository administration

Prepartum

- Vaginal examinations for evaluation of the cervix, fetal station, and position
- Static cervices represent various stages of dilation from closed to 5 cm, and effacement from 0 to 90%
- Leopold's maneuvers
- Epidural port with infusion and aspiration

Intrapartum

- Realistic palpable uterine contractions
- Controllable rate and duration of contractions
- Trendelenburg position with detection
- Left lateral tilt with detection
- Vertex and breech delivery
- McRoberts maneuver with observable pelvic tilt
- Suprapubic pressure support and detection with palpable symphysis pubis
- Supports delivery of posterior arm during shoulder dystocia
- Zavanelli maneuver with detection
- C-section team training support
- Rotation of anterior and posterior shoulder is detected in resolving shoulder dystocia (Rubin II and Woods' Screw maneuvers)
- Forceps application
- Vacuum extraction
- Intact/fragmented placenta with realistic color, texture and flexibility

Fetus

- Fetal heart sounds (five locations based on fetal presentation)
- Articulated fetal body and neck (with lateral neck movement), shoulders, elbows, hips, and knees
- Clinically accurate fetal size with tactile realism—50th percentile on the WHO growth chart
- Fetal neck traction sensing
- Palpable fontanel and sagittal suture
- Fetal airway suctioning
- Programmable audible cry upon delivery
- Predicted 1-minute and 5-minute APGAR scores based on fetal blood gas values
- Umbilical cord that can be cut and clamped

Postpartum

- Postpartum hemorrhaging, including Class III hemorrhage
- Contracted and boggy uterus
- Bimanual compression and uterine massage with detection and automatic response
- Uterine blood released upon massage
- Inverted postpartum uterus
- Uterine reversion (optional uterine inversion module)
- Intrauterine balloon insertion



Key Features

Airway and Breathing

- Realistic upper airway
- Positive pressure ventilation
- Bag mask ventilation
- Advanced lungs with mechanical ventilation support, including patient-triggered modes
- Airway management and ventilation
- Supports endotracheal tubes, nasal-pharyngeal and oropharyngeal airways
- Spontaneous breathing with chest excursion
- Lung auscultation: anterior and posterior
- Spontaneous chest excursion

Circulatory System

- Electrocardiogram (ECG) monitoring posts for interface with real ECG monitor
- 12-lead dynamic ECG display
- Dynamic bilateral pulses: carotid, radial, brachial, and dorsalis pedis
- Variable pulse strength

Cardiovascular

- Correct hand placement detection
- Advanced CPR analysis (compression depth and rate, chest recoil, compression fraction, ventilation volume and rate)
- CPR metrics compliant with AHA guidelines
- Pacing, cardioversion and defibrillation
- NIBP by auscultation and palpation
- Heart sounds

Nervous System

- Seizure is simulated with rhythmic movement of arms and rapid blinking
- SymEyes display patient symptoms and conditions, including jaundice, hemorrhage, keyhole pupil, cataracts and bloodshot or droopy eyes
- Blinking, panning and reactive eyes with multiple settings

Fluids

- Postpartum bleeding tank (1.8 L)
- Bilateral IV arms
- Urinary catheterization
- Epidural infusion

Speech

- 2-way voice communication
- Pre-recorded speech
- User-recorded speech

© 2021 CAE Healthcare 594-0621 Rev5

*Available in two skin tones:  Medium  Dark

Your worldwide
training partner
of choice





最好的 護理專用模擬人 強勢推出

向您介紹 CAE Juno — 最好的護理模擬人

還在用老舊或笨重的護理模擬人嗎？何不試試 CAE Juno！以 CAE Healthcare 多年之臨床專業知識，全新為講師與學員設計出最好的護理模擬人！講師設計擬真範例超容易，學員練習護理技能超逼真。

Juno 是一具仿真、輕巧、含各種臨床處置，可變男、變女的模擬人！便攜機動性高，範例設計性多，男女互變性容易，一機多用既省空間、又省成本！絕對能為您帶來全新的、絕佳的臨場模擬體驗！

想了解 CAE Juno 更多嗎？請上 caehealthcare.com/juno 或洽總代理 錫昌科技！

歡迎來電立即**免費體驗**

 錫昌科技


CAE

Technical Specifications

標準配備

中等膚色(深膚色和淺膚色供選擇)
全新的軟體操作介面包含 10 個模擬病例：

- 慢性心衰竭惡化
- 繼發性腸胃道出血至食道靜脈曲張
- 身體評估
- 氣喘病人居家照護管理
- 術後照護併發肺炎
- 抽痰及氣切造成缺氧
- 臀部置換術後基礎評估
- 破裂憩室術後照顧
- 癲癇發作及中度學習障礙
- 癱瘓及尿道感染，並且已簽署 DNR

電子使用手冊

CAE一年保固

配件包

選配設備

內建操作軟體的平板電腦

TouchPro 無線病人監測儀

可更換傷口模組

乳房切除模組

乳房檢查模組

產後子宮底評估模組

選配軟體

七套 CAE 學習模組

模擬人

162.56cm* 52.07cm* 25.4cm

大約重量 22.7kg(50lbs) · 依選配項目而變動

電源

90~240V AC ,50/60HZ

內建電池：15V 3.20Ah可充電鋰電池

使用時間：約4小時



更多原廠資訊

CAEJuno™

臨床特點



特性和技術規格如有更改，恕不另行通知。

主要特點

同一個模擬人可當作男性或女性操作。性別轉換套件包含假髮、軀幹皮膚和生殖器官。

可選擇教師控制的情境或預排程的模擬臨床體驗 (SCEs)，兩者都有軟體和硬體平台，以及完整資料。不需購買額外的軟體或硬體。

臨床技術功能

- 準確的解剖位置有助於臨床技能練習。
- 擬真關節活動可促進適當的病人處置。
- 眼睛和耳朵可用真實液體模擬分泌物或藥物管理。
- 鼻孔是暢通的，可插入鼻咽管、鼻導管和鼻胃管。
- 口腔為暢通的，可做口腔及牙齒護理，可做口腔的氣道處置及插入氣管內管。
- 擬真的氣切位置能夠練習氣切照護及使用真實液體練習抽痰。
- 鎖骨下導管護理。
- 胸管護理。
- 透過使用 BVM、面罩、氣管內管或氣切，因氣體的進出而擬真的胸腔起伏。
- 可透過真實液體管灌餵食或洗胃。
- 可手動產生頸動脈脈搏 (標準版選項中，可由軟體設定肱動脈及橈動脈脈搏)。
- 可使用 ECG 的電極貼片 (標準版選項中，可由軟體設定心律)。
- 可練習造瘻口的護理及引流。
- 可練習導尿且有實際液體流出。
- 可使用實際液體進行灌腸。
- 可利用三角肌、臀肌和大腿外側肌肉練習肌肉注射。
- 可移動且容易維護的靜脈注射手臂，可以練習靜脈注射留置、注射位置照護及液體回流。

用來診斷及評估病人狀況的聲音及心律

標準版選項中，可由軟體調整以下選項：

- 可調心音、速率、心律及音量
- 可以調整多種 ECG 呈現
- 多種肺音及呼吸速率
- 科氏音 (korotkoff) 可經由血壓手臂進行設定
- 多種可設定腸音
- 軟體內預設口語音
- 可透過模擬人與學員進行雙向溝通



CAE Juno

We've built a
better clinical
skills manikin

CAE Juno, uniquely designed to meet clinical competencies

Backed by CAE Healthcare's unrivaled support and clinical expertise, CAE Juno offers true mobility, ease of use and a contemporary look and feel for a fully immersive experience. Juno easily converts from female to male, saving on costs and space while facilitating expanded learning opportunities.

Get ready to expect more.

Find out how CAE Juno can redefine your expectations at caehealthcare.com/juno

Your worldwide
training partner
of choice



Technical Specifications

Standard Equipment

- CAE Juno wireless and tetherless manikin: medium and dark skin tones available
- Male and female gender configuration
- Software compatible tablet (Complete)
- New software platform CAE Maestro – instructor driven (Live/Complete)
- One Maestro Stand alone License (Live/Complete)
- Includes 10 Simulated Clinical Experiences (Live/Complete)
 - Chronic heart failure exacerbation
 - Gastrointestinal bleed secondary to esophageal varices
 - Skills validation
 - Asthma management of patient in home care setting
 - Postoperative care of the patient with complications: pneumonia
 - Suctioning and tracheostomy care with hypoxia
 - Basic assessment of the hip replacement patient
 - Postoperative care of the patient with a ruptured diverticulum
 - Seizure disorder and moderate learning disability
 - Dementia and urinary tract infection in a patient with DNR orders
- Electronic user guide (Live/Complete)
- Single year CAE Express Assurance warranty

Optional Equipment

- Patient monitor computer (Live/Complete)
- Interchangeable wound modules
- Post-mastectomy module
- Breast exam module
- Fundus assessment module
- Articulated arms
- Ultrasound training model insert for venous and arterial cannulation and infusion

Optional Software

- Six additional CAE Learning Modules available (Live/Complete)

Manikin

- 64" H x 20.5" W x 10" D (162.56 cm x 52.07 cm x 25.4 cm)
- Approximate Weight = 50 lbs. (22.7 kg), varies depending on options

Electrical

- AC Input: AC 115-230VAC, 50/60Hz
- Internal Batteries: 15V 3.20 Ah Lithium ion, rechargeable
- Runtime: Approximately 4 hours

Key Features

Articulation

- Realistic articulation
- Range of motion in hips, knees, ankles, shoulders, elbows and wrist
- Cervical motion for practice of patient stabilization

Airway

- Oral and dental hygiene
- Nasal packing
- Bag-valve-mask (BVM) ventilation
- Nasopharyngeal and oropharyngeal airway placement
- Endotracheal tube placement
- Tracheostomy tube placement
- Endotracheal tube and tracheostomy tube suctioning with fluids

Breathing

- Manual bilateral chest rise and fall with BVM ventilation via face mask, endotracheal tube and tracheostomy tube
- Bilateral chest tube insertion for care and maintenance

Cardiac (Live/Complete)

- Defibrillation and cardioversion via software
- 4-lead ECG monitoring with real equipment
- 12-lead dynamic ECG display

Circulation

- Unilateral blood pressure measurement by auscultation and palpation (Live/Complete)
- Bilateral carotid pulses (manual)
- Unilateral radial and brachial pulses with programmable intensities (Live/Complete)
- Unilateral subclavian catheter insertion for care and maintenance



Gastric

- Nasogastric tube insertion and gastric lavage and gavage with fluids
- Ostomy care and irrigation of a variety of configurable stomas
- Enema administration with fluids

Medication Administration

- Eye and ear irrigation
- Six intramuscular sites for medication administration in bilateral deltoids, bilateral vastus lateralis, ventrogluteal and dorsogluteal sites

Urinary

- Urinary catheterization with fluids
- Interchangeable genitalia

Vascular Access

- Unilateral IV cannulation at antecubital and dorsum of hand
- Fluid and medication administration
- Blood draw with vacuum sealed blood collection system
- Ultrasound training module insertion for venous and arterial cannulation (optional)

Sounds (Live/Complete)

- Auscultation of normal and abnormal heart, lung and bowel sounds
- Pre-recorded speech and vocal sounds
- Bidirectional audio communication between manikin and operator



CAEAria

提升臨床醫護人員
於兒童急救處置之
信心

幫助學員迅速做出正確判斷與臨床緊急處置

兒童呼吸衰竭通常會造成心肺驟停，臨床兒科醫護人員可經由 CAE Aria 在無風險的環境下訓練，提升急重症評估與呼吸道管理處置決策。具發紺、喘息和胸骨上凹陷等特徵，幫助學員辨別呼吸困難與診斷呼吸窘迫，迅速做出正確判斷與臨床緊急處置。在兒童急救過程中，時間就是一切，進行急救時，不能錯失了黃金急救時間，有效提升第一線專業醫護人員在兒童急救領域所需要的專業知識和技能，緊急時刻來臨時，才能在有限時間內拯救他人性命。

CAE Aria 無線兒童模擬人，可完整提供對兒童所需要的醫療照護訓練，從基本評估到執行臨床技能，以及 PALS、PEARS 和 APLS 等進階訓練之認證需求。

想了解更多 CAE Aria 的功能嗎？請上 healthcare.kyst.com.tw 台灣總代理 – 錫昌科技



更多資訊



尋找 
適合我的模擬人



 錫昌科技

規格

標準配備 Standard Equipment

- CAE Aria 無線兒童模擬人
- 操作平板 (含最新操作軟體 Maestro)
- 單機版帳號一組
- 無線 StethoSym 模擬聽診器一組
- 10 個模擬情境：
 - a. 意外電擊 Accidental electrocution
 - b. 藥物過量意外 Accidental overdose
 - c. 燒傷 Burn injury
 - d. 腦內損傷 Closed head injury
 - e. 糖尿病酮酸中毒合併低血氧 Diabetic ketoacidosis with hypoxemia
 - f. 動物咬傷中毒 Envenomation
 - g. 槍傷 Gunshot wound
 - h. 呼吸道阻塞 Obstructed airway
 - i. 溺水 Submersion injury
 - j. 創傷合併氣胸 Trauma with pneumothorax
- 電子版使用手冊
- 一年原廠保固

選購配備 Optional Equipment (Live / Advanced 版)

- 模擬生理監視器
- 外接出血模組
- 外接 SymDefib 去顫盒
- 加購 StethoSym 模擬聽診器
- 加購生理連動驅動
- 加購額外單機版帳號
- Learning Space 視訊回饋系統

模擬人 Manikin

- 身長 121.92 cm
- 重量 22.68 kg

電源 Electrical

- AC 115-230VAC, 50/60Hz
- 2 組內建電池: 14.4V 6.90Ah 可充電鋰電池
- 運轉時間: 充滿電約可使用 5 小時

© 2021 CAE Healthcare 677-0521 Rev11

特點



關節

- 僵直頸部
- 前臂可旋前與旋後
- 頸部、肩膀、肘部、腕部與膝部均可活動擬真關節

呼吸道處置

- 正確的呼吸道解剖位置
- 鼻咽 / 口咽氣管插管 (ET tube)
- 逆行性與光纖插管
- 氣管快速換氣
- 壓額抬下巴 / 下顎推前法
- 支援食道通氣
- 喉頭罩呼吸道 (LMA) · iGel · King 插管
- 口咽 / 鼻咽呼吸道處置
- 甦醒球 (BVM) 給氧
- 手術 / 針刺環甲膜切開術
- 氣管切開術
- 舌頭腫脹、咽喉腫脹、喉頭痙攣 (Advanced 版)
- 插管深度偵測且軟體自動記錄 (Live/Advanced 版)
- 支氣管阻塞 (Live/Advanced 版)
- 呼吸道阻力與肺順應性變換 (Advanced 版)

心臟系統

- 符合 AHA 指南胸部按壓
- 有效胸部按壓可觸診股動脈與心電圖顯示 (Live/Advanced 版)
- 可使用臨床心電圖監測儀 (Live/Advanced 版)
- CPR 品質即時分析 (Live/Advanced 版)
- 胸部按壓深度感測 (Live/Advanced 版)
- 體外 SimDefib 去顫設備 (Live/Advanced 版)
 - 可搭配臨床電擊器執行去顫與心臟整流
- 心律資料庫 (Live/Advanced 版)
- 12 導程心電圖模擬 (Live/Advanced 版)
- 血壓測量 (具 Korotkoff 音) (Live/Advanced 版)

循環系統

- 雙側可觸診脈搏
 - 頸動脈、肱動脈、橈動脈、股動脈 (Live/Advanced 版)
 - 膝關節動脈、足背動脈 (Advanced 版)
- 脈搏觸診感測與紀錄 (Live/Advanced 版)
- 血壓測量與脈搏連動 (Live/Advanced 版)
- 多種脈搏強度調整 (Live/Advanced 版)
- 口周發紺 (Advanced 版)
- 微血管充填 (Advanced 版)
- 指尖血糖測試

消化與泌尿系統

- 可更換男女生殖器
- 氣管插管誤入食道導致胃膨脹
- 可執行導尿技術 (實際液體引流)
- 口胃管 / 鼻胃管置換 (無液體引流)
- 胃造瘻口管 (實際液體引流)
- 栓劑給藥

神經系統

- 可變換三段式瞳孔 (Base 版)
- SymEyes 電子眼 (Live/Advanced 版)
- 胸骨疼痛刺激反應 (Advanced 版)
- 抽搐 (Advanced 版)

呼吸系統

- 自主呼吸 (Live/Advanced 版)
- 甦醒球 (BVM) 給氧顯示胸部起伏
- 自動感測與紀錄 (Live/Advanced 版)
- 右肺插管具單側胸部起伏 (Live/Advanced 版)
- 呼吸速率與吸氣 / 呼氣比 (Live/Advanced 版)
- 胸骨上凹陷 (Advanced 版)
- 支援機械式呼吸輔助 (Advanced 版)
 - A/C、PC
 - PEEP (可達 20 cm H₂O)
- 通氣測量 (Live/Advanced 版)
- 血氧模擬裝置 (Live/Advanced 版)
- 胸管置換 (Live/Advanced 版)
- 胸管引流可搭配出血模組 (Live/Advanced 版)
- 單側鎖骨中線針刺減壓
- 自動感測紀錄針刺減壓處置 (Live/Advanced 版)
- 可依情境調整單側胸部起伏同步單側呼吸音 (Advanced 版)

聲音系統

- 正常與異常心、肺、腸音聽診 (Live/Advanced 版 結合 StethoSym)
- 60 種以上男/女語音人聲 (Live/Advanced 版)
- 無線雙向通訊於模擬人及主控系統間，指導教師可直接與學員溝通 (Live/Advanced 版)

靜脈注射/骨內或肌肉注射

- 單側大腿肌肉注射與皮下注射
- 肱骨骨內注射 (無液體)、脛骨骨內注射 (有液體)
- 具回血肘前靜脈穿刺
- 單側頸靜脈中心靜脈導管

CAE Aria Small simulator. Big results.

Your worldwide
training partner
of choice



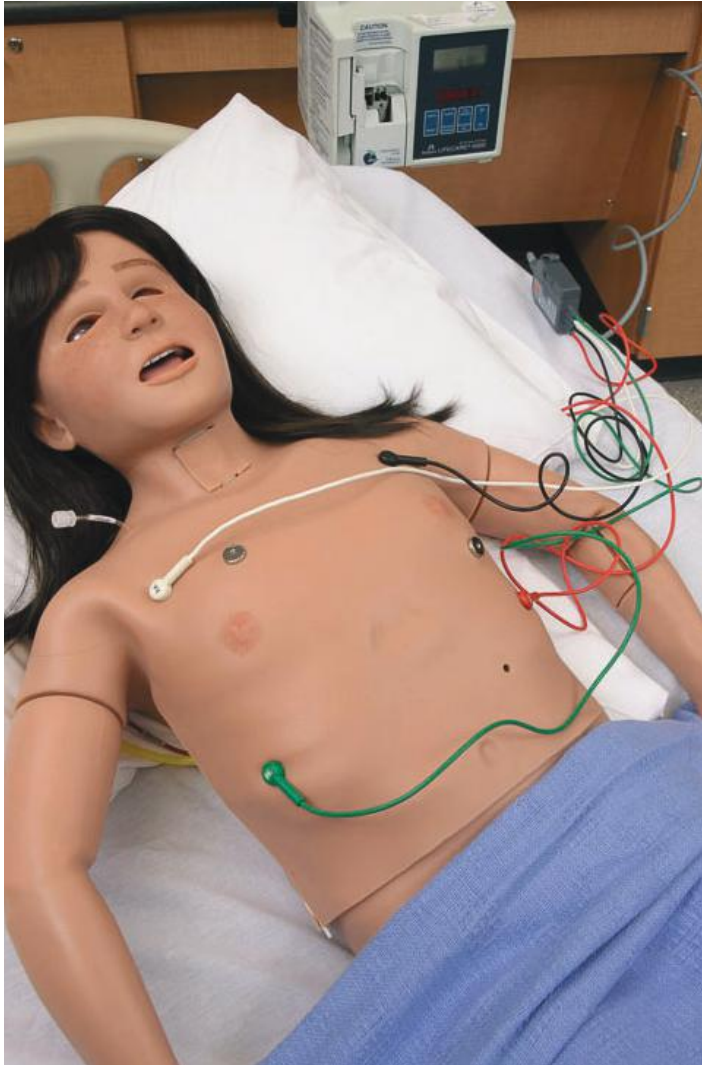
Reduce medical errors.
Improve performance.
Enhance patient care.

CAE Aria, our new, high-fidelity pediatric medical manikin, adds realism to educational scenarios to better prepare students and practicing professionals for the moments that count. Training with CAE Aria reduces medical errors, improves performance and enhances pediatric patient care.

Simulating a 7-year-old child, CAE Aria offers interchangeable gender, 60 vocal expressions and sounds, an advanced airway, neurological features and an active bleeding system, all of which enable students and clinicians to:

- Assess verbal cues, like confusion, anxiety, stress and pain
- Learn airway management skills
- Conduct neurological evaluations
- And train for pediatric emergencies as if they were really happening

With 10 included simulated clinical experiences, CAE Aria supports training for some of the most common and emotionally charged pediatric emergencies, from an accidental overdose to a gunshot wound. Students and practicing professionals can make assessments, apply clinical decision-making and provide medical interventions in a risk-free environment, so they're ready for the real thing.



Included Simulated Clinical Experiences

- Accidental electrocution
- Accidental overdose
- Burn injury
- Closed head injury
- Diabetic ketoacidosis with hypoxemia
- Envenomation
- Gunshot wound
- Obstructed airway
- Submersion injury
- Trauma with pneumothorax

Lifelike care in any situation.

Wireless and tetherless, CAE Aria can be put into realistic and relevant training situations, like a home or ambulance. That means learners can stay in the moment, wherever that may be.



Academic programs

Reduce the need for pediatric clinical sites by leveraging CAE Aria's lifelike responses in a risk-free environment



General/children's hospitals

Maintain life-saving pediatric certifications by using CAE Aria to refresh the skills and reflexes of nurses, doctors and healthcare professionals



Emergency medical services

Learn proper assessment, transport, handoffs and pediatric response

IT'S TIME FOR AN INTRODUCTION.

Call us now at **+1.941.377.5562** to meet CAE Aria.

Technical Specifications

Manikin

Height: 48 in (121.92 cm)

Weight: 50 lbs. (22.68 kg)

Electrical

AC Input: 115/230V 50/60Hz

2 internal batteries: 14.4V, 6.90Ah lithium-ion, rechargeable

Total battery life: approximately 5 hours

Available in two skin tones: Medium Dark

Live Advanced

Standard Equipment

	Live	Advanced
Software-compatible tablet	•	•
CAE Maestro instructor-driven software platform (Manual mode)	•	•
1 CAE Maestro standalone license (Manual mode)	•	•
1 Wireless StethoSym	•	•
One year of CAE Express support and maintenance	•	•
Emulated patient monitor software	•	•
User guide	•	•
SymDefib external defibrillator box		•

Optional Equipment

	Live	Advanced
External bleeding module	•	•
Patient monitor computer	•	•
Additional StethoSym units	•	•
CAE Maestro physiology	•	•
Additional standalone Maestro licenses	•	•
CAE LearningSpace	•	•
SymDefib external defibrillator box	•	•

Features & Benefits

Live Advanced

Articulation

	Live	Advanced
Stiff neck	•	•
Realistic joint articulation in neck, shoulders, elbows, hips and knees	•	•
Forearm pronation and supination	•	•

Airway (Assess and manage airway)

	Live	Advanced
Anatomically accurate oral cavity and realistic airway	•	•
Nasotracheal/orotracheal intubation (ET tube)	•	•
Retrograde and fiberoptic intubation	•	•
Transtacheal jet ventilation	•	•
Head tilt, chin lift, jaw thrust	•	•
Supports esophageal intubation	•	•
LMA, iGel and King insertion	•	•
Oral and nasal pharyngeal airway insertion	•	•
Bag-valve-mask ventilation support	•	•
Surgical/needle cricothyrotomy	•	•
Tracheostomy	•	•
Swollen tongue, pharyngeal swelling and laryngospasms		•
Intubation depth detection and software event log	•	•
Bronchial occlusion	•	•
Variable lung compliance and resistance		•

Cardiac (Assess and manage cardiac status)

	Live	Advanced
Chest compressions compliant with AHA CPR requirements	•	•
Effective chest compressions generate palpable femoral pulses and electrocardiogram (ECG) activity	•	•
Supports ECG monitoring using real devices	•	•
CPR real-time quality feedback and reporting	•	•
Chest compression depth sensor	•	•
Library of cardiac rhythms	•	•
Software-based 12-lead ECG	•	•
Non-invasive blood pressure (BP) with Korotkoff sounds	•	•

Circulation (Assess and manage perfusion status)

	Live	Advanced
Bilateral palpable pulses with event detection and logging	•	•
- Carotid, brachial, radial, femoral	•	•
- Popliteal		•
- Dorsalis pedis		•
Pulse palpation event detection and logging	•	•
Blood pressure dependent pulses	•	•
Variable pulse strength	•	•
Circumoral cyanosis		•
Peripheral capillary refill		•
Fingerstick blood glucose	•	•

Gastric and Urinary (Assess and manage gastrointestinal and genitourinary status; deliver and manage medications and fluids; perform catheter and enema insertions)

	Live	Advanced
Interchangeable female and male genitalia	•	•
Abdominal distention with esophageal intubation	•	•
Urinary catheterization with urine output	•	•
Orogastric/Nasogastric tube (no fluids)	•	•
Gastrostomy tube (with fluids)	•	•
Suppository administration	•	•

Neurologic (Perform neurological assessments to identify abnormalities/deficiencies)

	Live	Advanced
SymEyes	•	•
Pain response via sternal rub		•
Seizures		•

Respiratory (Assess and manage breathing)

	Live	Advanced
Compliant with 2020 AHA BLS guidelines and 2021 ERC guidelines	•	•
Spontaneous breathing	•	•
Visible chest rise during bag-valve-mask ventilation	•	•
Automatic detection and logging of right main stem	•	•
Unilateral chest rise and lung sounds with right main stem	•	•
Variable inspiratory/expiratory ratios	•	•
Substernal retractions		•
Mechanical ventilation support		•
- Supports asynchronous volume and pressure-controlled ventilation		•
- Supports PEEP (up to 20 cm H2O)		•
Ventilation measurement	•	•
Simulated pulse oximeter	•	•
Chest tube placement	•	•
Chest tube fluids with external bleeding module	•	•
Unilateral mid-clavicular needle decompression	•	•
Automatic detection, resolution and logging of mid-clavicular needle decompression	•	•

Sounds

	Live	Advanced
Auscultation of normal and abnormal heart, lung and bowel sounds	•	•
60+ scripted male/female vocal expressions and sounds	•	•
Wireless voice capability	•	•

Vascular Access (Manage intravenous and intraosseous access for medication delivery)

	Live	Advanced
Unilateral anterolateral thigh intramuscular and subcutaneous injection sites	•	•
Humeral IO (no fluids) and Tibial IO (with fluids)	•	•
Antecubital venipuncture site with flashback	•	•
Pre-ported jugular catheter and dorsum of left hand	•	•



CAELuna

新生兒訓練 完整解決方案

小巧輕便，專為全方位新生兒照護而設計

CAE Luna 為 CAE Healthcare 第一款全無線嬰兒模擬人，可更換性別，提供全面性的新生兒醫療照護模擬訓練 - 從新生兒評估、嬰兒心肺復甦術到高級救命術。

新生兒在出生 28 天之內存活的風險最大，CAE Luna 可模擬從出生至分娩後 28 天的新生兒狀態，從基本新生兒評估、新生兒高級救命術 (NRP)、兒童高級救命術 (PALS) 到重症監護體驗，可訓練預置氣管切開術部位、周邊動脈導管放置、鎖骨下導管放置、喉痙攣，並可模擬新生兒戒斷症候群 (NAS)、氣胸、發紺等等，使學習者能接受最廣泛的模擬訓練。

想了解更多 CAE Luna 的功能嗎？請上 healthcare.kyst.com.tw 台灣總代理 - 錫昌科技



更多資訊



尋找 
適合我的模擬人



 錫昌科技

規格

標準配備 Standard Equipment

- CAE Luna 無線新生兒模擬人
- 操作平板 (含最新操作軟體 Maestro)
- 單機版帳號一組
- 無線 StethoSym 模擬聽診器一組
- 五個模擬情境 (SCEs) :
 - a. Infant Code
 - b. 新生兒戒斷症候群 Neonatal Abstinence Syndrome
 - c. 新生兒復甦術 Neonatal Resuscitation
 - d. 氣胸 Pneumothorax
 - e. 血流灌注不足 Poor Perfusion
- 電子版使用手冊
- 一年原廠保固

選購配備 Optional Equipment

- 模擬生理監視器
- SymDefib 模擬去顫盒
- 加購 StethoSym 模擬聽診器
- 加購額外單機版帳號
- 進階肺部系統
- Learning Space 視訊回饋系統

模擬人 Manikin

53.34cm

4.18kg

電源 Electrical

AC 115-230VAC, 50/60Hz

內建 3.8V, 3.88Ah 可充電鋰電池 · 充滿電約可使用 4 小時

特點

關節

- 擬真關節
- 頸部、肩膀、腕部、肘部、髖部與膝部均可活動
- 前臂可旋前與旋後

呼吸道處置

- 正確的呼吸道解剖位置
- 鼻咽/口咽氣管插管 (ET tube)
- 壓額抬下巴/下顎推前法
- 支援食道通氣
- 喉頭罩呼吸道 (LMA)
- 口咽/鼻咽呼吸道處置
- 甦醒球 (BVM) 給氧
- 氣管切開術
- 喉頭痙攣
- 插管深度偵測且軟體自動記錄
- 動態肺順應性*
- 動態呼吸道阻力與肺順應性*
- 可調整肺部阻力*

心臟系統

- 有效的胸部按壓可反應於觸診股動脈與心電圖顯示
- 可使用臨床心電圖監測儀
- Q CPR 品質即時分析
- 胸部按壓深度感測
- 體外 SimDefib 設備
 - 可使用臨床去顫器
 - 可使用臨床儀器執行心臟整流
- 心律資料庫

循環系統

- 可觸診脈搏
 - 肱動脈 (標準版)
 - 肱動脈、股動脈與臍動脈 (進階版)
- 脈搏觸診感測與紀錄
- 血壓測量與脈搏連動
- 多種脈搏強度調整
- 發紺

消化與泌尿系統

- 可更換男女生殖器
- 氣管插管誤入食道導致胃膨脹
- 可執行導尿技術 (實際液體引流)
- 鼻胃管置換 (無液體引流)



神經系統

- 可變換三段式瞳孔大小
- 手動調整凶門 (凹陷、正常、腫脹)
- 哭泣聲與呼嚕聲
- 手臂活動反應

呼吸系統

- 自主呼吸
- 自動感測與紀錄
- 右支氣管插管具單側胸部起伏
- 甦醒球 (BVM) 給氧時可視胸部起伏
- 可調呼吸速率與吸氣/呼氣比
- 可依情境調整單側胸部起伏同步單側呼吸音
- 凹陷呼吸
- 通氣測量
- 胸管置換
- 鎖骨中線針刺減壓
- 可依情境調整脫離呼吸器/拔管之費力呼吸*
- 二氧化碳呼出量*

聲音系統

- 正常與異常心、肺、腸音聽診結合 (StethoSym)

靜脈注射/骨內或肌肉注射

- 雙側大腿肌肉注射與皮下注射
- 靜脈套管：注射、輸液與抽血
- 靜脈注射位置：上臂、頭皮、腳部
- 周邊動脈導管置換
- 鎖骨下靜脈導管置換
- 臍靜脈導管輸液與採樣
- 脛骨骨內注射

* 外接進階肺部系統與 CAE 生理驅動軟體



CAELuna

Your complete
solution for
neonate training

The perfect infant simulator for progressive skills development

CAE Luna is CAE Healthcare's first completely wireless and tetherless infant simulator. Available in three scalable patient configurations (Base, Live, Advanced), with full female to male gender conversion, CAE Luna can provide neonatal training programs with everything needed to achieve critical learning objectives.

From newborn assessment and infant CPR to advanced life support and neonatal resuscitation, CAE Luna has a comprehensive range of features. Equipped with ports for peripheral IV, peripheral arterial catheter and subclavian catheter placement, CAE Luna facilitates priming of all fluid ports from just one site.

CAE Luna supports training in laryngospasm management, tracheostomy care and management, advanced mechanical ventilation, and additionally meets requirements for Infant Nursing Skills, S.T.A.B.L.E. Program, the Neonatal Resuscitation Program (NRP) and Pediatric Advanced Life Support (PALS).

Discover true innovation in healthcare simulation. Discover CAE Luna at caehealthcare.com

Your worldwide
training partner
of choice



Technical Specifications

Standard Equipment

- CAE Luna wireless and tetherless infant manikin: Medium and Dark skin tones available
- Software compatible tablet
- New software platform CAE Maestro instructor driven
- One CAE Maestro standalone license
- One wireless StethoSym
- Includes five Simulated Clinical Experiences (SCEs)
- Infant Code
- Neonatal Abstinence Syndrome
- Neonatal Resuscitation
- Pneumothorax
- Poor Perfusion
- Electronic user guide
- Single year CAE Value Assurance warranty

Optional Equipment (Live/Advanced models)

- Patient monitor computer
- SymDefib external defibrillation box
- Additional StethoSym units
- Maestro physiology
- Additional standalone Maestro licenses

Manikin

- 21" H (53,34 cm)
- Approximate Weight = 8 lbs. (4.18 kg)

Electrical

- AC Input: AC 115-230VAC, 50/60Hz
- Internal Batteries: 3.8V 3.88 Ah Lithium ion, rechargeable
- Runtime: Approximately 4 hours

Key Features

Articulation

- Realistic joint articulation
- Articulating neck, shoulders, elbows, hips and knees
- Forearm pronation and supination

Airway

- Anatomically accurate oral cavity and realistic airway
- Nasotracheal/orotracheal intubation (ET tube)
- Head tilt, chin lift, jaw thrust
- Supports esophageal intubation
- LMA insertion
- Oral and nasal pharyngeal airway insertion
- Bag-valve-mask ventilation support
- Tracheostomy
- Laryngospasms (Advanced model)
- Intubation depth detection and software event log (Live/Advanced models)
- Dynamic lung compliance*
- Dynamic airway resistance and lung compliance*
- Variable lung resistance*

Cardiac

- Effective chest compressions generate palpable femoral pulses and ECG activity
- Supports ECG monitoring using real devices (Live/Advanced models)
- CPR Real-time quality feedback and reporting (Live/Advanced models)
- Chest compression depth sensor (Live/Advanced models)
- External SimDefib box (Live/Advanced models)
- Defibrillate using real devices and energy
- Cardiovert, and pace using real devices and energy
- Library of cardiac rhythms

Circulation

- Palpable pulses
- Brachial (Live model)
- Brachial, femoral and umbilical (Advanced model)
- Pulse palpation event detection and logging
- Blood pressure dependent pulses
- Variable pulse strength
- Circumoral cyanosis (Advanced model)

Gastric and Urinary

- Interchangeable female and male genitalia
- Abdominal distention when incorrectly intubated
- Urinary catheterization with urine output
- Feeding tube placement (no fluids)

Neurologic

- Variable Tristate Eyes
- Manually-manipulated fontanel (depressed, normal, and bulging)
- Crying/Grunting (Live/Advanced models)
- Active arm movement (Advanced model)



Respiratory

- Unilateral chest rise with right mainstem intubation
- Automatic detection and logging (Live/Advanced models)
- Visible chest rise during bag-valve-mask ventilation
- Spontaneous, continuous breathing (Advanced model)
- Variable respiratory rates and inspiratory/expiratory ratios (Advanced model)
- Programmable unilateral chest rise and fall (Advanced model)
- Unilateral lung sounds synchronized with respiratory rate (Advanced model)
- Substernal retractions (Advanced model)
- Mechanical ventilation support (Advanced model)
- A/C, SIMV, CPAP, PCV, PSV, NIPPV
- Supports PEEP (up to 20 cmH2O)
- Dynamic airway and lung controls*
- Variable lung compliance*
- Bilateral bronchial resistance*
- Ventilation measurement (Live/Advanced models)
- Chest tube placement (Live/Advanced models)
- Mid-clavicular needle decompression (Live/Advanced)

Sounds

- Auscultation of normal and abnormal heart, lung and bowel sounds (Live/Advanced with StethoSym)

Vascular Access

- Bilateral anterolateral thigh intramuscular and subcutaneous injection sites
- IV cannulation: bolus, infusion, and sampling
- IV Sites: Upper Arm, Scalp and Foot
- Peripheral arterial catheter placement
- Subclavian catheter placement
- Umbilical catheterization: continuous infusion and sampling
- IO tibial access

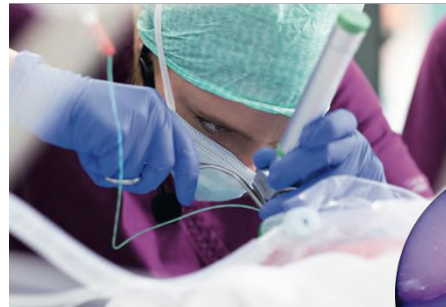
**Advanced model with External Lung and CAE Physiology*

Paul 無線早產嬰兒模擬人

模擬 27 周早產兒狀態

3D 列印之精確喉部解剖構造

高擬真內部與外部解剖結構



平板控制 操作簡單

編輯簡易

直觀操作介面，可即時更改模擬人狀態或創建新的模擬情境

即時生理監視器顯示

控制平板可快速更改生理參數

事件標注功能

導師可依照學員操作情形直接標示註解



HIGH EMOTION SIMULATION

病理性呼吸型態 (翹翹板式呼吸、反常呼吸、胸骨下凹陷、呼嚕聲)

高擬真上呼吸道，專為練習氣管插管與特殊新生兒照護技術 (MIST, INSURE) 而設計

可使用 BVM 與新生兒 T 型組合復甦器

自動感測插管位置

心、肺、腸音聽診

發紺與高氧徵象

連接呼吸器狀態下，顯示肺部參數

自動感測臍靜脈導管置放位置與深度正確與否

可觸診臍帶與四肢脈搏

可替換四肢與臍帶



高擬真無線模擬人

- 為 27 周的早產嬰兒
重量：1 kg
身長：35 cm
頭圍：26 cm
- 高擬真外觀，包括皮膚、觸感與頭髮
發紺時呈現藍紫色，過度氧合呈現紅色
- 具自主呼吸與病理性呼吸型態
- 完全無線操作

呼吸道

- 高擬真上呼吸道
支援經口與經鼻氣管插管
為訓練 LISA (MIST) 和 NSURE 最佳選擇

正常呼吸

- 於機械通氣下的真實肺部生理參數顯示
- 可調整呼吸速率 0-100 次/分

病理性呼吸

- 多種肺部順應性調整
- 反式呼吸
- 肋骨下凹陷
- 病理呼吸音 (呼嚕聲)
- 氣胸

循環系統

- 四肢與臍帶脈搏可觸診
- 胸部按壓
- 四肢可執行周邊導管放置 (可替換)
- 臍靜脈導管置放 (可替換)

自動感測

- 頭部位置
- 感測插管位置在氣管或食道
- 感測插管深度
- 單肺插管自動感測
- 胸部按壓有效性
- 感測臍帶剪斷
- 臍靜脈導管放置與深度感測

伴隨呼吸同步之聲音表現

- 哭聲
- 羊水
- 呼嚕聲

聽診

- 可使用藍牙聽診器聽診心、肺、腸音

操控筆電

- 可經由觸控式螢幕、鍵盤或滑鼠操控
- 搭配微軟 SurfaceBook 平板電腦，鍵盤可拆解
- 無線操控模擬人

圖像化使用者操作介面

- Paul 實際 3D 動畫模擬
- 即時顯示生理、病例與處置過程 (如：BVM、氣管插管等)
- 自動記錄事件與模擬人狀態
- 可加入註記於事件記錄中
- 自動整合 SIMStation 的影音

預設病人生理監視器

- 支援多個品牌生理監視器
- 可經由操控畫面簡單變換生理監視器顯示介面
- 可依情境模擬需求設定顯示介面
- 觸控式螢幕
- 心電圖模擬狀態

情境教案

- 可預先編輯疾病症狀 (RDS, BPD, NFC, Apnoea)
- 情境教案快速儲存功能

移動便利性

- 模擬人包括其配件可收納至便攜箱，方便移動至模擬現場

可擴充項目

- 二氧化碳監測模擬





HELLO PAUL

The world's first
High Emotion preterm simulator
for realistic critical care training
in neonatology

 HighEmotionSimulation

 @SIMCHARACTERS

www.simcharacters.com

Why neonatal simulation training?

1 in 10 infants are born premature. Providing high quality care for a preterm baby is a uniquely complex and time-sensitive process which is extremely challenging for inter-professional neonatal healthcare teams. Although preterm birth remains the most common cause of death among infants, preemies weighing only 500 to 1,000 grams can survive as healthy babies when cared for by highly trained healthcare professionals.

Yet how can these professionals effectively learn life-saving procedures during such delicate critical care emergencies? Simulation is quickly becoming the modern way to educate and train healthcare professionals because it allows for the safe high-stakes practice of behavioral, cognitive and technical skills. Previously, such realistic technology had been impossible in the small body of a 27-week-old infant.

“Our mission at SIMCharacters is to improve the quality of care for critically ill preterm and newborn babies by advancing the realism and effectiveness of training simulators.”

Jens Schwindt, MD
CEO & Neonatologist



Moving beyond high fidelity to High Emotion

Determined to improve the outcomes of more than 15 million preterm births a year, Neonatologist Dr. Jens Schwindt founded SIMCharacters in 2012. With Paul, SIMCharacters is taking the next step in the future of medical simulation.

Paul was designed by an incredible team of leading experts in neonatology, education, simulation, engineering, software development, and movie special effects – all of whom shared the same goal of creating a premature simulator so realistic that it went beyond high fidelity to High Emotion.

The SIMCharacters team knows that creating High Emotion Simulation requires understanding and empathy with the teams, families, and programs caring tirelessly for preterm newborns.

1 IN 10 BABIES ARE BORN PREMATURE



The world's most advanced patient simulator

Measuring only 35cm and weighing less than 1,000g, Paul is the most accurate recreation of a preterm baby born in the 27th week of pregnancy. Paul provides next-generation pre-term simulator features including an anatomically correct 3D printed larynx based on real-life preterm MRI scans, physiological and pathological breathing patterns, highly realistic internal and external anatomical structures, and convincingly lifelike clinical practice features.

Paul was designed specifically to improve the realism and learning outcomes of your NICU team and will forever change the way neonatology trains.

"Working with such a realistic simulator creates an interprofessional team training event which goes beyond high fidelity, to high emotion."



Martina Stix
Neonatal Nurse Practitioner
General Hospital Vienna

HIGH EMOTION SIMULATION

Pathological breathing patterns (seesaw breathing, paradoxical respiration, substernal retractions, grunting)

Cyanosis and hyperoxia

Highly realistic upper airway, ideal for practicing endotracheal intubation and special neonatal care strategies (MIST, INSURE)

Ventilation using bag-mask and Neopuff systems

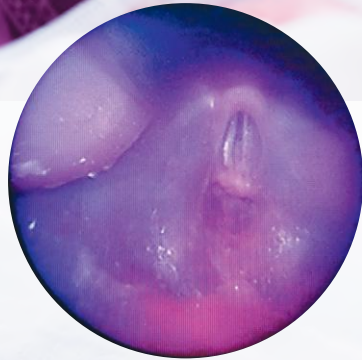
Automatic tube position detection during intubation

Auscultatory respiratory, heart, lung and intestinal sounds





- **Realistic anatomy:** Paul represents a premature newborn born at 27 weeks with realistic internal and external anatomy including the most realistic 3D printed larynx ever seen.
- **Authentic pathologies:** Pathologies specific to preterm babies with physiological and pathological breathing patterns (RDS, BPD), NEC, cyanosis, and hyperoxia.
- **Completely wireless:** Enables highly realistic premature critical care training for improved learning and patient safety outcomes with 1.5 hours of battery use.



"Paul's airway is absolutely realistic – you think you are intubating a real infant. Paul will forever change the training of neonatologists."



Prof. Martin Wald, MD
Head of Neonatology
Paracelsus University Salzburg

Physiological and pathological lung parameters for machine-assisted ventilation

Sensors to detect the correct position and depth of an umbilical venous catheter

Palpable pulse on the umbilical cord and all four extremities

Replaceable extremities



Simple controls for complex scenarios

Paul's undockable control tablet demonstrates learner actions with real-time 3D animations. Easily review real-time displays of all preterm simulator conditions including chest compressions, tube depth, UVC position, and motion artifacts. Single touchscreen buttons enable simple controlling of complex scenarios with the ability to quiksave patient states and easily rearrange scenario files. Modify vital signs and add annotations with Paul's intuitive smartphone-like touchscreen.

The SIMCharacters patient monitor offers you the ability to select layouts based on leading manufacturers, including Dräger, Philips, and Nellcor, to enable your simulation program to train with the patient monitor layouts you are most comfortable with. Simply touch the screen of the patient monitor or your control tablet to change layout style, settings, and functionality.

- **3D Animated Control:** Paul's animated GUI displays synchronized graphical representations of learner actions as they happen.
- **Simple programming:** Easily create and quiksave the desired patient state and string them together with time modifiers to easily create new scenarios.
- **Real patient monitors:** Instantly change layout screen to preferred manufacturer. Wirelessly change monitor parameter displays such as curve position and color.
- **Integrated annotations:** Data collected from learner interactions with Paul, such as UVC insertion, combine with your custom annotations to be automatically recorded into Paul's debriefing log.



"Paul provides new residents with a unique and safe learning opportunity before they ever touch a premature baby."



Claudia Lindtner, MD
Resident in Neonatology
Medical University Vienna

HIGH EMOTION CONCEPT

- Preterm baby in 27+3 gestational week
 - Weight: 1,000g, Length: 35cm, Head circumference: 26cm
 - Highly realistic external anatomy
 - Real hair
 - Realistic to the touch
- Skin color changes to simulate cyanosis (blue) and hyperoxia (red)
- Realistic spontaneous respiration and respiratory pathologies
- Completely wireless operation
- Recharged via inductive charging pad
- 1.5 hours of mobile battery use

AIRWAY

- Highly realistic upper airway
- Oral and nasal intubation
- Ideal for training endotracheal intubation, LISA (MIST) and INSURE

NORMAL RESPIRATION

- Physiological lung with realistic values under machine-assisted ventilation
- Spontaneous breathing with respiratory rate variable between 0 and 100 bpm

PATHOLOGICAL BREATHING

- Infinitely variable lung compliance
- Inverted breathing
- Subcostal retractions
- Pathological respiration noises (grunting)
- Pneumothorax

CIRCULATION

- Palpable pulse on all four extremities and on the umbilical cord
- Thorax compressions
- Insertion of peripheral catheters in all four extremities (exchangeable)
- Insertion of umbilical venous catheter (exchangeable umbilical cord)

SENSORS

- Sensor for head position
- Detection of the tube in the trachea or oesophagus
- Detection of the tube depth
- Automatic under ventilation of the left lung if catheter is inserted too deeply into the right main bronchus
- Effectiveness of thorax compressions
- Detection of umbilical cord transection
- Detection of the umbilical venous catheter and the penetration depth

AUDIBLE EFFECTS

- Crying
- Amniotic fluid
- Grunting

STETHOSCOPE

- Position-dependent auscultation of respiratory, heart and stomach noises via the BlueTooth stethoscope provided

TRAINER'S LAPTOP

- Inputs via touchscreen, or keyboard and mouse
- SurfaceBook tablet detachable from keyboard for on-site training
- Manikin operated via WiFi

GRAPHIC USER INTERFACE (GUI)

- 3D animation of the manikin on the GUI
- Real-time display of all physiological and pathological processes and therapeutic interventions (e.g. mask ventilation and intubation)
- Automatic transfer of events and manikin status to the debriefing interface
- Ability to add annotations via the debriefing interface
- Automatic integration with a SIMStation audio-video debriefing system®

PRECONFIGURED PATIENT MONITORS

- Dräger, Philips, Nellcor
- Easily switch between monitor types via the trainer monitor
- User-defined configuration and use corresponding to the interface of the original monitor
- Touch-screen function
- Various monitor sizes
- ECG motion artefacts

PROGRAMMABLE SCENARIOS

- Preprogrammed symptoms (RDS, BPD, NEC, apnoea)
- Intuitive programming of scenarios via Quicksave function
- Easy access to factory settings and scenario progressions

TRANSPORT

- Trolley for transporting the entire system

TECHNICAL SERVICES

- On-site installation
- Guarantee extension & maintenance program: Extend your SIMCharacters standard warranty to two years for all parts and labor. The two year program includes one general refurbishment of the simulator during the contractual term. The five year program includes two general refurbishments of the simulator during the contractual term. These refurbishments include a full check of all functions and the refurbishment and preventative exchange of parts subject to wear and tear. The checks, maintenance work and repairs are performed by SIMCharacters. All of the shipping costs are also covered by SIMCharacters. If necessary, we will provide you with a fully functional replacement system for the period of time that your system is being refurbished or repaired by SIMCharacters. This will be shipped to you within one working day. Free software updates.

