



nalta
conference
gila river resort | wild horse pass
august 10-12, 2026



CONFERENCE BROCHURE

TABLE OF CONTENTS

SOAKING UP KNOWLEDGE IN THE VALLEY OF THE SUN

2

REGISTRATION
INFORMATION

3

HOTEL
INFORMATION

5

AIRPORT
OPTIONS

6

SPONSORSHIP OPPORTUNITIES
& EXHIBITOR INFORMATION

12

CONFERENCE
NETWORKING EVENTS

14

SOAKING UP KNOWLEDGE
IN THE VALLEY OF THE SUN

15

SPEAKER
LINE UP

18

SOAKING UP FUN IN
THE VALLEY OF THE SUN

23

CONFERENCE
COMMITTEES



REGISTRATION DETAILS

BEST VALUE! **EXTENDED!**
EARLY BIRD
ENDS MAY 28TH

REGISTRATION TYPE	BEST VALUE! EARLY BIRD ENDS MAY 28TH	STANDARD MAY 20TH - JULY 13TH
1-DAY REGISTRATION - Monday Only		
Member	\$350	\$350
Non-Member	\$350	\$350
2-DAY REGISTRATION - Tuesday & Wednesday		
Member	\$850	\$950
Non-Member	\$950	\$1,050
3-DAY REGISTRATION - Monday, Tuesday, & Wednesday		
Member	\$1,050	\$1,150
Non-Member	\$1,150	\$1,250
GUEST EVENT TICKET - \$200		

Register online at
nalta.org/conference
 or scan the QR code below.



Registration Includes:

- Admission to Your Choice of Sessions
- Breakfast & Lunch on Respective Days
- Conference Bag & T-Shirt
- Access to Digital Class Materials
- Continuing Education Credits
- Tuesday Evening Networking Event



Pending Continuing Education Credits

- NALTA (CPLTA)
- NADOA (CDOA)
- NARO (CMM)
- AAPL (RL/RPL/CPL)
- CLE/MCLE (TX, PA, OH, WV)

NALTA's Late Registration & Cancellation Policy:
 NALTA is unable to issue refunds for the 2026 NALTA Conference.
 Substitutions are encouraged.

5040 Wild Horse Pass Blvd.
Chandler, AZ 85226



GILA RIVER

RESORTS & CASINOS

wild horse pass

Gila River Resorts & Casinos – Wild Horse Pass is a AAA Four-Diamond Awarded hotel neighboring 36 holes of Golf, Aji Spa, Koli Equestrian Center, and Phoenix Premium Outlets. All of this is located less than 20 minutes from Sky Harbor Airport.

Wild Horse Pass has twice been voted Best Casino in the Valley. This East Valley hot spot features several restaurants and lounges including Prime Steakhouse. Desert views, city skyline, and outstanding amenities await your arrival.

playatgila.com

\$150/night

**CLICK HERE TO
BOOK YOUR STAY!**

Or call (520) 796-4900
and mention
“2026 NALTA Annual Conference”





THE GILA RIVER INDIAN COMMUNITY

Gila River Resorts & Casinos has been operating four locations in Arizona for over 30 years, all owned by the Gila River Indian Community: Wild Horse Pass, Lone Butte, Vee Quiva and Santan Mountain.

The resorts at Wild Horse Pass and Vee Quiva are Four-Diamond accredited. All four casinos offer a combination of slots, BetMGM Sportsbook, and table games including blackjack, craps, and roulette. Poker is offered at Lone Butte, and Bingo at Vee Quiva. All are open 24 hours a day, 365 days a year. Additional information is available at 1-800-946-4452 or at PlayAtGila.com.

The Gila River Indian Community is an alliance of two tribes, the Akimel O'odham (Pima) and the Pee Posh (Maricopa). The Community was established by Executive Order in 1859 and formally established its own Constitution in 1939. The Gila River Indian Community covers more than 600 square miles and is the largest indigenous community in the Phoenix metropolitan area. The Gila River Indian Community borders such cities as Phoenix, Avondale, Mesa, and Casa Grande. In the last few years, with concentrated economic developments that led to a continuing increase of agricultural, industrial, and recreational activities, the "People of the River" significantly moved the Community from federal reliance toward greater self-sufficiency.





AIRPORT OPTIONS

RECOMMENDED AIRPORT:

Phoenix Sky Harbor International Airport (PHX) 13.7 miles from hotel

ADDITIONAL OPTIONS:

Chandler Municipal Airport (CHD) 11.7 miles from hotel

Phoenix-Mesa Gateway Airport (AZA) 20.1 miles

Falcon Field Municipal Airport (MSC) 25.5 miles from hotel

Phoenix Deer Valley Airport (DVT) 37.4 miles from hotel



BECOME A LEVEL SPONSOR!

PLATINUM

**\$4,000
and up**

Logo advertisement on Conference materials*[^]

1 two-day Conference Registration (includes admission to networking events!)

NALTA Conference Website: sponsor's logo featured extra large-sized with link to website

Some Special Sponsorships fall under this category. See page 6 for Special Sponsorship Opportunities.

DIAMOND

**\$3,000 to
\$3,999**

Logo advertisement on Conference materials*[^]

NALTA Conference Website: sponsor's logo featured large-sized with link to website

Some Special Sponsorships fall under this category. See page 6 for Special Sponsorship Opportunities.

GOLD

**\$2,000 to
\$2,999**

Logo advertisement on Conference materials*

NALTA Conference Website: sponsor's logo featured medium-sized with link to website

SILVER

**\$1,000 to
\$1,999**

Name recognition on Conference materials*

NALTA Website: sponsor's logo featured small-sized with link to website

BRONZE

**UP TO
\$999**

Name recognition on Conference materials*

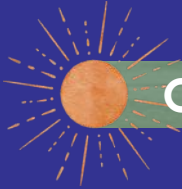
* Conference Materials include: December 2026 issue of the *NALTA News Magazine*, Conference Signs, and Conference Webpage

[^] Additional opportunity to be featured in the June 2026 issue of the *NALTA News Magazine* if donation is committed by April 1, 2026.

SPONSORSHIP OPPORTUNITIES

SPECIAL SPONSORSHIPS

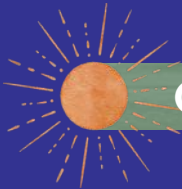
Special Sponsorship opportunities are limited and fall under the Platinum and Diamond sponsorship levels (minimum support of \$3,500 required). Sponsor may be responsible for sponsorship signs.



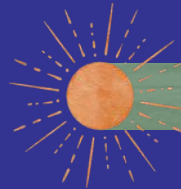
CONFERENCE T-SHIRTS



CONFERENCE BAGS



CONFERENCE SIGNAGE



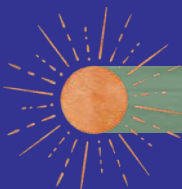
NETWORKING EVENTS



NAME TAGS



KEYNOTE SPEAKER(S)



**FOOD & DRINKS
(BREAKS & EVENTS)**



WIFI SPONSOR

OTHER SPONSORSHIP OPPORTUNITIES



MONETARY DONATION



**DOOR PRIZES
(GIFT CARDS, ELECTRONICS,
PROMOTIONAL SWAG)**



**CONFERENCE BAG SWAG
(MINIMUM 300 ITEMS)**

Some Special Sponsorships may no longer be available.
For more information, contact Donations Chair Robyn Arnold at robyn.e.arnold@exxonmobil.com.



nalta conference



NALTA DONATION REQUEST FORM

SPONSOR LEVELS for Cash Donations

- Bronze:** up to \$999: name recognition on conference materials*
- Silver:** \$1,000 - \$1,999: name recognition on conference materials*, NALTA website- small logo advertisement with link to sponsor website
- Gold:** \$2,000- \$2,999: logo advertisement on conference materials*, NALTA website- medium logo advertisement with link to sponsor website
- Diamond:** \$3,000- \$3,999: logo advertisement on conference materials*, NALTA website- large logo advertisement with link to sponsor website**
- Platinum:** \$4,000 and above: logo advertisement on conference materials**, NALTA website- extra-large logo advertisement with link to sponsor website**, & 1 two-day registration to the NALTA Conference (including social events)

Yes, _____ is excited to help support the 2026 NALTA Conference!

I/We would like to contribute in the following way(s):

- I. Cash Donation in the amount of _____
- II. Door Prize(s) (gift cards, electronics, corporate promotional swag, etc.)
Description (if known): _____
- III. Attendee Conference Bag Item(s) (anticipated quantity = 300)
Description (if known): _____
- IV. Please tell me more about the special sponsorship opportunities you have available.
- special sponsorships are limited
 - special sponsorships require minimum support of \$3,500 and will fall under the Diamond/Platinum Sponsor level
 - sponsor may be responsible for sponsorship signs

Special Sponsorships include but may not be limited to: Conference Signs
 Conference T-shirts
 Name Tags
 Keynote Speaker(s)
 Evening Socializing Events
 Food and Drink (Events and Breaks)
 Conference Bags
 Wi-Fi Sponsors

* Sponsor Name _____

Contact _____ Phone _____ Email _____

*Conference Materials include: The December issue of the NALTA Magazine; Conference Signs, Conference Website Information
 ** Additional Opportunity to be sponsored in the June issue of the NALTA Magazine if donation is committed by April, 1, 2026

Please return to our donation team - Attn: Robyn Arnold
robyn.e.arnold@exxonmobil.com



NALTA is grateful for your support.
 Donations made by credit card are processed securely through Stripe and include a 7% fee to cover processing costs. To ensure your full contribution goes directly toward supporting our mission and members, you may also submit a check payable to: NALTA
 ~ 4747 Research Forest Dr., Suite 180-221 ~ The Woodlands, TX 77381

CALLING ALL EXHIBITORS

Join us at the

2026

nalta

conference

gila river resort | wild horse pass

in Chandler, Arizona!

WHAT'S INCLUDED

- Booth Set up
- 2-day Conference Registration
- Access to all events
- Influencer Marketing
- Recognitions on all media sites & *NALTA News* magazine

nalta.org/conference

RESERVE YOUR COMPANY'S BOOTH TODAY!

EXHIBITOR/VENDOR FORMS ON PAGES 10-11



NALTA EXHIBITOR/VENDOR REGISTRATION FORM

Hotel Accommodation References:

Gila River Resort and Casino, Wild Horse Pass • 5040 Wild Horse Pass Blvd • Chandler, AZ 85226 • P: 866-246-4062

Use Hotel link on conference website discounted rate: starting at \$150.00 (plus taxes & fees) per night, room rate offered 3 days pre/post event

All hotel accommodations will be the responsibility of the Exhibitor/Company

Exhibitor Information

Full Name & Title (as appears on badge): _____

Company Name: _____

Address: _____ City, State, Zip Code: _____

Phone: _____ Email: _____

Exhibit Space Request:

Products/Services will you exhibit: _____

Special circumstances with your exhibit: _____

Additional registrants (Register on website as attendee)

Full Name & Title (as appears on badge): _____

Email: _____ Phone: _____

Full Name & Title (as appears on badge): _____

Email: _____ Phone: _____

Full Name & Title (as appears on badge): _____

Email: _____ Phone: _____

Marketing:

Your company will be promoted in NALTA's Quarterly Magazine, conference materials, as well as highlighted on all our social media accounts.

Exhibitor Booth Fee \$950.00: Additional details are outlined in the NALTA Exhibitor/Vendor Agreement (See Page 2).

Payments made by check should be made payable to NALTA. Credit Card payments will be processed through Stripe, and a 7% service fee will be applied to all such payments.

Checks should be made payable to: NALTA • 4747 Research Forest Dr., Suite 180-221 • The Woodlands, TX 77381



For additional information please contact:
Kelley Newkirk-Konarik or Stephanie Wilson
NaltaExhibitor@gmail.com



NALTA EXHIBITOR/VENDOR AGREEMENT

Gila River Resort and Casinos, Chandler AZ

August 10- 12th, 2026

This is to confirm that _____ ("Exhibitor/Company") will participate as an Exhibitor/Vendor at the NALTA Conference scheduled for August 10th-12th, 2026, Gila River Resorts & Casinos - Wild Horse Pass, Chandler, AZ.

By payment of the **\$950.00 Exhibitor Registration Fee** and execution of this Agreement, the Exhibitor/Company understands that the National Association of Land and Title Analysts ("NALTA") will provide:

- One (1) 8' x 30" skirted table with two (2) chairs and one (1) waste basket.
- Conference Registration for one (1) representative of the Company. Registration Form is attached.
 - Registration includes attendance of all Sessions, Meals/Breaks, and Receptions, including any evening social events.
- **Each additional Representative(s) must register as an attendee on the conference website and use a code provided for registration.**

By execution of this Agreement, the Exhibitor/Company understands that it will be the Exhibitor/Company's responsibility to:

- Make all travel arrangements and hotel reservations for each Representative of the Company. Use the link on the NALTA Conference website to obtain the group discount on your hotel reservation.
- Exhibitor is responsible for keeping their exhibit area clean and coordinate with hotel for disposal of all bulk trash.
- Incentive Door Prizes to encourage conference Attendees to visit the Exhibitor/Vendor Fair.
 - Coordinate with NALTA if you plan on sponsoring a door prize, additional sponsorships, or advertisements in *NALTA News* magazine.
- Make arrangements with the hotel concerning any needed AV/IT. (These items are not covered in the registration fee.)
- Set up booth Monday, August 10, 2026 and tear down by 3:30pm Wednesday, August 12, 2026.

Exhibitors / Vendors are allowed to host their own separate networking functions at their own cost. However, they shall not be scheduled during NALTA Conference functions.

I understand and agree to this Exhibitor's Acceptance Agreement as set out above.

Company Name: _____

By: _____ Date: _____

Title: _____



For additional information please contact:

Kelley Newkirk-Konarik or Stephanie Wilson

NaltaExhibitor@gmail.com



MONDAY NIGHT PRESIDENT'S RECEPTION

6 PM
IN THE BALLROOM

Join us for drinks and light hors d'oeuvres
Monday night to celebrate
the start of Conference!

TUESDAY NIGHT NETWORKING EVENT

PRIME

A SHULA'S STEAK HOUSE

The spectacular views aren't the only thing elevated about PRIME, a world-class steakhouse located on the 11th floor of the Gila River Resort & Casino - Wild Horse Pass.

Dress to impress and show it off in the photobooth while a DJ spins our favorite tunes!

MONDAY SEMINAR & PANEL DISCUSSION ACQUISITIONS & DIVESTITURES



B.J. BLACK
Attorney
STEPTOE &
JOHNSON, PLLC

**Overview of the
Diligence Process in the
Appalachian Basin**

**The Acquisition
Avalanche**

ELIZABETH GERBEL
Founder & CEO
EAG



DREW HOPKINS
Vice President of
Business Development
NOVUS CONSULTING

**Mergers and
Acquisitions**

**Acquisitions
and Divestitures**

AMY HOPMANN, CPLTA
VP of Customer Success
& Land Outsourcing
PAKENERGY



BETH MCCRANIE, CPLTA
Owner
McCRANIE
LAND SERVICES

**The Day After Close:
Cleaning Up Land Data**

SPEAKER LINE UP

Check nalta.org/conference for more information and updates on speakers and topics.



Steve Bailey

DIRECTOR OF REVENUE ROYALTY
Baker Tilly US



William "B.J." Black

MEMBER
Steptoe & Johnson, PLLC



Vanessa Fields

SENIOR REGULATORY MANAGER
LOGOS Operating LLC



Lori Fisher, CPLTA

MANAGING DIRECTOR
Percheron LLC



Melissa Gardner

SENIOR ATTORNEY
Ball Morse Lowe PLLC



Brad Gibbs

CO-OWNER
Oliva Gibbs



Erica Honeycutt,
CDOA, CPLTA

OWNER
Honeycutt Solutions



Drew Hopkins

VICE PRESIDENT OF BUSINESS DEVELOPMENT
Novus Consulting



Amy Hopmann, CPLTA

VP OF CUSTOMER SUCCESS & LAND OUTSOURCING
PakEnergy



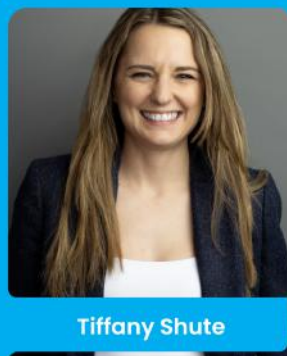
Travis Irwin

MEMBER
Steptoe & Johnson, PLLC



Becky Rodgers, CPLTA

SUPERVISOR - LEASE RECORDS
Ascent Resources



Tiffany Shute

MANAGING ASSOCIATE ATTORNEY
Mazurek, Belden & Burke, P.C.



Weldon Sloan

ASSOCIATE
Vartabedian Katz Hester & Haynes



Michelle Bradshaw,
MBA, CPLTA

LAND ADVISOR
Diversified Energy



Doni Carder

SENIOR MANAGER,
LAND & CORPORATE COUNCIL
EAG



Vincent A. Caruso, Jr.

MANAGING DIRECTOR
Percheron LLC



Rachelle Clemons

MANAGER OF U.S. LAND
ADMINISTRATION
FrancoNevada U.S.



Elizabeth Gerbel

FOUNDER & CEO
EAG



Andy Graham

MEMBER
Steptoe & Johnson PLLC



Mandi Guerrero

SENIOR VICE PRESIDENT
OF GEOLOGY
Point Energy Partners



Conrad Hester

MANAGING PARTNER
Vartabedian Katz
Hester & Haynes



Beth McCranie, CPLTA

OWNER
McCranie Land Services



Robin McGuire

ATTORNEY



Tim McKeen

MEMBER
Steptoe & Johnson, PLLC



Rachael Overbey

CHIEF OF STAFF & ACTING
EXTERNAL AFFAIRS DIRECTOR
FOR THE OFFICE OF CMEI
US Department of Energy



Robert Walter, CPL

DIVISION LANDMAN
Gulfport Energy



Jim Weigand

DIRECTOR
Baker Tilly US



Julie Woodard, CPL

VICE PRESIDENT
& PRESIDENT ELECT
AAPL

TUESDAY KEYNOTE



Andy Graham focuses his practice in the areas of energy and mineral law (oil and gas, coal, and coalbed methane), real estate, and commercial transactions. Andy regularly assists clients with title examinations, coordinating and performing due diligence, buying and selling mineral, midstream and renewable energy assets, and handling surface use issues arising from energy development.

Andy Graham
Member
Steptoe & Johnson, PLLC



SOAKING UP FUN IN THE VALLEY OF THE SUN

OUR TOP REASONS TO EXTEND YOUR STAY



Hole in the Rock
Papago Park
625 N Galvin Pkwy
Phoenix, AZ 85008

Enjoy breathtaking views from the top of this unusual rock formation in Phoenix's Papago Park after an easy 10-minute hike from the parking lot. Drop by right before sunset for milder temperatures and an even more stunning vista. The place can get quite crowded at this time of day, though. You can also picnic in the shade or visit other must-see attractions within Papago Park, such as Phoenix Zoo and the Desert Botanical Garden. There are other trails in the park that are great for walking or hiking. If you're traveling in the warmer months, bring plenty of water to endure the desert climate.

[tripadvisor.com](https://www.tripadvisor.com)



Whirlwind
GOLF CLUB

**Book your tee time
online or by phone
(480) 490-1500.**



**5692 W North Loop Rd
Chandler, AZ 85226**

Whirlwind Golf Club is a truly unique Southwest golf experience sensitively designed to preserve the rich cultural heritage of the Gila River Indian Community.

The two courses, Devil's Claw and Cattail, are masterpieces designed by Gary Panks covering 500 acres, with 250 acres of turfed area and 250 acres of desert landscape. Featuring pristine and uncluttered views of South Mountain and Sierra Estrella Mountains, the courses showcase the beauty of the natural terrain.

Both Devil's Claw and Cattail were created to reflect the land while the waters still flowed on the reservation by combining the Gila River landscape including cottonwood, mesquite, saguaro and palo verde trees with native grasses and rolling terrain. These challenging golf courses stretching well over 7000 yards also features gradual elevation changes and great designed bunkers with multi-tiered greens.

whirlwindgolf.com

**Book your Wild West
journey online or call
(602) 796-3495.**



**KOLI
EQUESTRIAN CENTER
WILD HORSE PASS**

**6940 W Broken Ear Rd
Chandler, AZ 85226**

Sprawling 2400 acres of breathtaking Southwest landscape, Koli Equestrian Center offers Private and Group guided horseback rides that are sure to become lasting memories. Rides are either 60 or 90 minutes long and are offered 7 days a week. Specific riding times are offered on the Koli website, where you can book your reservations and find out more.

koliequestrian.com



OASIS AND SERENITY POOLS

GILA RIVER RESORT & CASINO
WILD HORSE PASS

Experience the best of both worlds at the Pools at Wild Horse Pass. Soak up the sun at the vibrant Oasis Pool, featuring premium loungers, an expansive Jacuzzi, and a lively atmosphere. For a tranquil escape, retreat to our Serenity Pool, an exclusive 21+ sanctuary designed for pure relaxation.



Cabana and daybed rentals are available [online](#).




**PHOENIX
PREMIUM OUTLETS®**
A SIMON CENTER

**4976 Premium Outlet Way
Chandler, AZ 85226**

Just a short walk or shuttle ride from the Gila River Resort & Casino - Wild Horse Pass, explore a shopping oasis at Phoenix Premium Outlets. Explore over 90 stores featuring luxury brands and amazing deals.

If the 7-minute walk isn't for you, Gila River Resorts & Casinos - Wild Horse Pass offers a complimentary shuttle with pickups every 20 minutes.

premiumoutlets.com/outlet/phoenix

VIEW THE STORE MAP



AJI SPA

5594 W Wild Horse Pass Blvd.
Phoenix, AZ 85226

Book your serenity [online](#) or
by phone at (602) 385-5759.



Nestled in the heart of the Sonoran Desert, Aji Spa at the Sheraton Grand at Wild Horse Pass is a Forbes Five-Star sanctuary that blends luxury with the sacred healing traditions of the Pima and Maricopa tribes. Named after the Pima word for “sanctuary,” Aji Spa offers a deeply immersive experience through its architecture, storytelling art, and treatments rooted in ancient rituals. Guests are invited to disconnect from the everyday and reconnect with themselves in a tranquil setting that features 17 treatment rooms, a serene pool, and a full-service salon and fitness center.

From the detoxifying red clay of the Gila River to the sacred Shegoi plant, each treatment at Aji Spa is thoughtfully crafted to purify, rejuvenate, and restore balance. Signature therapies draw from centuries-old traditions, offering guests a rare opportunity to experience wellness through the lens of Indigenous wisdom. Whether indulging in a restorative massage, a nourishing facial, or a ceremonial body treatment, every moment at Aji Spa is designed to honor the spirit, soothe the body, and inspire inner harmony.

ajispa.com



DESERT BOTANICAL GARDEN

1201 N. Galvin Parkway
Phoenix, AZ 85008

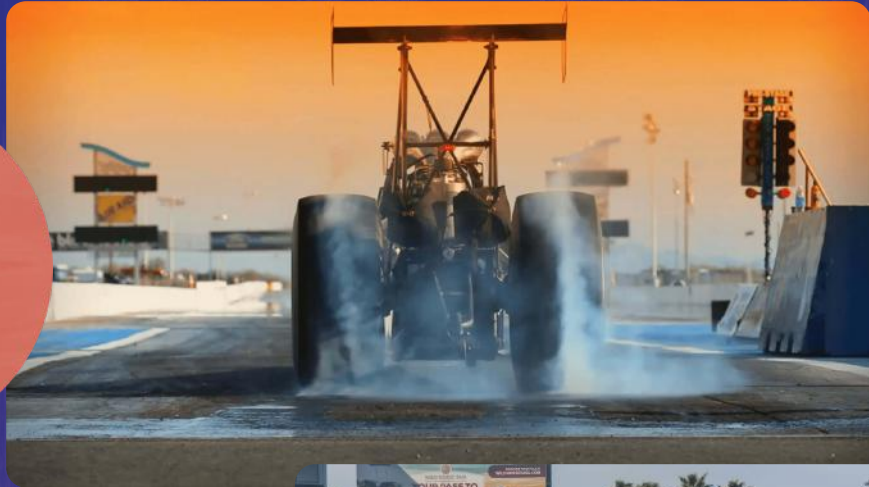
Think the desert is all dirt and tumbleweeds? Think again. Desert Botanical Garden is home to thousands of species of cactus, trees and flowers from all around the world spread across 55 acres in Phoenix, Arizona.

[Plan your visit](#) and explore the garden trails, the Cohn Family Butterfly Pavilion, and the Schilling Library.

dbg.org



20000 S Maricopa Rd
Chandler, AZ 84226



The multi-use facility at FIREBIRD Motorsports Park spans 600 acres and includes four race tracks: a 1/4 mile NHRA sanctioned drag strip; a 1.6-mile road course; a 10-turn 1.25-mile road course; and a 1.1-mile road course. Additionally, it features a 2.4-mile IHBA and APBA sanctioned oval lake.



There is a variety of events that occur at FIREBIRD Motorsports Park, and each has its own particular details. The park in general provides multiple parking lots, grandstand seating, on-site food and beverage, and two functional pavilions. Check the schedule for a list of upcoming events.

racefirebird.com



TOPGOLF SWING SUITE

GILA RIVER RESORT & CASINO
WILD HORSE PASS

Level up at Topgolf Swing Suite – perfect your swing, play arcade favorites, and savor nachos, wings, and cocktails from Upper Deck. It's game night reimaged for nonstop fun and connection.

Reserve a swing suite [online](#).

CONFERENCE

CONFERENCE COORDINATOR & 1ST VICE PRESIDENT
Dawn Howell, CPLTA

2025/2026 NALTA PRESIDENT
Angela Pesina, CPLTA

AWARDS

Joey D. King, CPLTA (CHAIR)

AUDIO/VISUAL

Kimberly M. Smith, CPLTA (CHAIR)
Melissa Calley, CPLTA (CO-CHAIR)
Stephanie Davis, CPLTA (CO-CHAIR)

Liz Bicoy, CPLTA

Kelley Newkirk-Konarik, CPLTA

Anna Miller, CPLTA, RMM

Scott Olson, CPLTA

Tola Tiamiyu, CPLTA

Katrena Villarreal, CPLTA

BROCHURE & MEDIA

Rachel Collier, CPLTA (CHAIR)

EXHIBITORS

Kelley Newkirk Konarik, CPLTA (CHAIR)

Stephanie Wilson, CPLTA

PHOTOGRAPHY

Liz Bicoy, CPLTA (CHAIR)

Rachel Collier, CPLTA

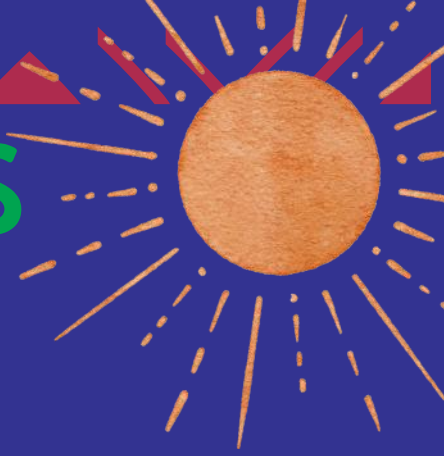
Amanda Haskins, CPLTA

Patty Hoecker

Renae Ludrick

Sarah Robinson-Garcia, CPLTA

COMMITTEES



CPLTA DIRECTOR
Tami Caldwell, CPLTA

DONATIONS
Robyn Arnold, CPLTA (CHAIR)
Olga McGee
Kristin Hohmann

ENTERTAINMENT
Scott Davis, CPLTA (CO-CHAIR)
Wendy Morgan (CO-CHAIR)

FINANCE
Enjoli Hoff, CPLTA (CHAIR)

HOTEL
Priscilla J. Robinson, CPLTA (CHAIR)

REGISTRATION
Dawn E. Lindley, CPLTA (CO-CHAIR)
Mandy Cookson, CPLTA (CO-CHAIR)

EDUCATION
Sarah Burge, CPLTA (CO-CHAIR)
Michelle Teppo, CPLTA (CO-CHAIR)
Michelle Bradshaw, CPLTA

SIGNS & NAME TAGS
Jeanette Garnica, CPLTA (CHAIR)

SWAG
Roslyn Allen, PhD, CPLTA (CHAIR)



nalta

conference

gila river resort | wild horse pass

august 10-12, 2026

