

THE CHARENTE



edition 6 – autumn 2023

a **studio+** quarterly

Autumn





charette noun

cha·rette

variants: charrette \ she'ret \

definition: the intense final effort made by architects to complete their solutions to a given architectural problem in an allotted time.



THE CHARETTE

contents

1	damon's desk: a letter from the ceo	4
2	smps awards	8
3	simulating success	10
4	firm in the clouds	18
5	generative design	22
6	projects on the rise	26
7	product parade	28
8	culture	36

damon's desk:

A letter from the CEO

Celebrating Innovation

As we move further into 2023, I am thrilled by what we have accomplished and the remarkable achievements and milestones that reflect our commitment to innovation, excellence, and the continued growth of our firm.

One of the proudest moments for Studio+ this year has been the completion of our state-of-the-art healthcare simulation laboratory. This cutting-edge facility is a testament to our dedication to advancing healthcare design and improving patient care through innovative architecture. It stands as a shining example of how our expertise can positively impact the community and the healthcare industry as a whole.

In line with our commitment to staying at the forefront of technology, we have successfully transitioned our entire firm to a cloud-based structure. This monumental shift ensures that our teams have the flexibility, scalability, and security they need to deliver exceptional service to our clients. It also positions us for continued growth and adaptability in an ever-evolving industry.

Generative design has been a hot topic within our industry, and we are excited to delve into its nuances in this issue. Our experts have prepared insights on what generative design is, how it's shaping the future of architecture, and its potential applications in our projects.

Celebrations are in order as our marketing team proudly received two prestigious awards from the Society for Marketing Professional Services (SMPS). Our marketing efforts have been recognized with not one, but two awards, highlighting the creativity and effectiveness of our team. Additionally, we were named the Best Commercial Architecture and Interior Design Firm for Southwest Florida by Gulfshore Business,



an honor that reflects our dedication to exceptional design and our impact on the local community.

Our success wouldn't be possible without the dedication and expertise of our incredible team. I am thrilled to announce the well-deserved promotions of three outstanding team members. Their hard work and commitment to excellence have contributed significantly to our growth, and we are excited to see them continue to excel in their new roles.

As we reflect on these achievements, we are reminded that our journey is made special by the collective effort of our talented team and the trust and support of our valued clients and partners. Together, we will continue to redefine excellence in architecture, design, and innovation.

Damon Romanello
CEO | Founder
Studio+



We create design
solutions that
innovate for the future



THE CHALETTE

autumn edition 6

contributors.

CREATIVE DIRECTOR Joy Brownworth
ASSOCIATE EDITOR Samantha Bain
GUEST WRITER Taylor Brewington

ADDITIONAL CONTRIBUTIONS

Damon Romanello
Molly Dyal
Rachel Hunter
Mark Shannon

studio+

Studio+ provides a wide array of services within architecture and interior design across numerous markets including education, healthcare, senior living, and corporate. We unite these services to bring a unique product to our clients - seamless services that deliver results beyond typical expectations.

wearestudioplus.com

marketing@wearestudioplus.com

239.476.8888

12271 Towne Lake Drive
Fort Myers, Florida, 33913

about the cover.

NCH JUDITH AND MARVIN HERB SIMULATION CENTER

The simulation center provides a highly realistic learning environment that immerses learners in real-life situations, complete with complexities and distractions that one would encounter in actual medical settings. Whether dealing with basic medical issues or critical, life-threatening emergencies, the center equips learners with essential procedural skills, scenario-based training, and opportunities for teamwork, communication, and inter- and intra-professional training. The design of the space is made in a technologically advanced, modern Hi-Tech style, attracting and training talented people in a sleek environment. It utilizes a sophisticated palette of gray tones, natural wood, and blue accents.

THANK FOR YOU VOTING US GULFSHORE BUSINESS BEST OF BUSINESS 2023

BEST COMMERCIAL ARCHITECTURE FIRM & BEST COMMERCIAL INTERIOR DESIGN FIRM

GULFSHORE
BUSINESS

BEST
OF
BUSINESS
2023

studio+

NEO
GENOMICS

SMPS Marketing Communications Awards.



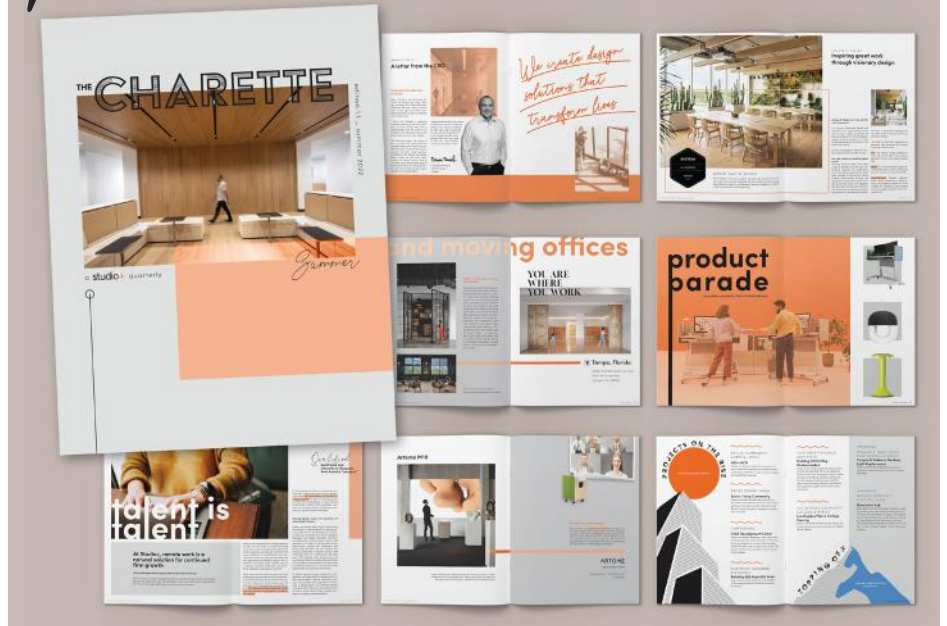
AWARDS AWARDS AWARDS

Last month, Studio+ was recognized at the SMPS Marketing Communication Awards for our achievements in marketing within the AEC industry.

The Award of Excellence for a Digital External Publication was awarded to our quarterly newsletter, The Charette. Secondly, a Merit Award was bestowed for the Pro Bono category for our efforts in the SWFL Strong: Here to Help Hurricane Ian Relief Campaign.

Award of Excellence

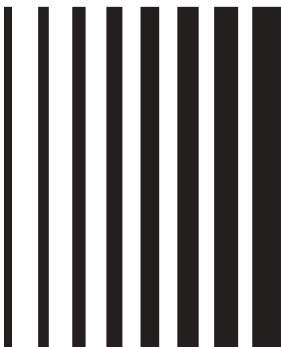
The Charette is Studio+'s quarterly newsletter, showcasing innovative projects, thought leadership articles, company culture, and emerging trends. The modern design reflects the Studio+ brand, with its own unique spin, and targets industry professionals, clients, and potential hires. The digital publication has an editorial feel, containing high-level content, while still blending internal company news and announcements. The Charette earned the Award of Excellence, given to the overall highest-scoring entry in the category



Merit Award



Studio+ was awarded a Merit Award in the Pro Bono category for our SWFL Strong: Here to Help Hurricane Ian Relief Campaign. Hurricane Ian collided with Southwest Florida, prompting Studio+ to support our headquarters' local community. Our team quickly jumped into action and created a hub for our community, utilizing our warehouse to collect and distribute supplies, and created a website landing page listing relief items, resources, and fundraising efforts.



Society for Marketing Professional Services (SMPS) provides an unparalleled opportunity for professionals to showcase their best marketing practices and to educate the industry about the critical role of marketing in successful firms. The SMPS Marketing Communications Awards Program is the longest-standing, most prestigious awards competition that recognizes excellence in marketing communications produced by professional services firms in the design and building industries.

SIMUL



IMAGINATING SIMULATING SUCCESS



Designing an environment that cultivates medical innovation at the Judith and Marvin Herb Family Simulation Center

GETTING LOST IN THE STATUS QUO

Most professional work environments can get stuck in the comfort of routine and the safety of standard operating procedures. In a risk-averse world, many stick to the timeless philosophy of “If it ain’t broke, don’t fix it.” This is especially true in the world of healthcare—the liabilities created even in the simplest day-to-day procedures have created an entire medical risk management industry.

SIMULATING SUCCESS

So how does a forward-thinking healthcare organization plan for the future and equip its staff for the best practices of tomorrow?

At Studio+, we believe simulation laboratories (“Sim Labs”) are one of the most dynamic tools architects can design for healthcare clients to improve existing procedures and equip future generations of healthcare practitioners.

SO, WHAT IS A SIM LAB?

In essence, medical simulation labs are learning environments designed to develop, simulate, observe, educate, and modify processes/procedures in specific healthcare environments. Some labs are developed to educate students while others exist to experiment with room layouts or test teaming structures for specific procedures. There are countless utilizations.

Regardless of the purpose of the specific lab, the overall idea is a simple one: a sim lab imitates reality as closely as possible.

The lab incorporates real-world tools and fixtures that healthcare end users would find on their job site. Doctors and nurses refine procedures using the same beds, the same operating tables, and the same lighting that they would use during their regular routines.



IMMERSION ROOM



The primary difference is the removal of the risk of having a living, breathing patient. Medical procedures can be timed, observed, refined, and revisited time and time again without issues of liability or malpractice arising. As costly mistakes happen in a lab, professionals are on-hand to assess and troubleshoot potential solutions without harm to human life.



Distractions should still be prevalent in a lab though—sim labs are not vacuum chambers. Complex surgeries will never be performed in utter silence, and the ability for medical staff to focus and concentrate on procedures will always be challenged by unexpected interruptions. In this way, practitioners are able to simulate even how they respond to unwanted stimuli.





THE PROJECT: A DONOR-DRIVEN PUSH FOR SIMULATION

Sim labs aren't just a good idea—we've long been at work with our clients to help refine their processes through simulation. NCH Healthcare was our latest client to see the value in simulation. With the help of generous donors, NCH partnered with Studio+ to design the Judith and Marvin Herb Family Simulation Center.

This particular sim lab was designed specifically for the training of medical residents and fellows. There are exact replicas of NCH intensive care units, emergency rooms, and standard hospital rooms. The future physicians of the healthcare system are immersed in small-team scenarios

where educators manipulate the environment and mannequins to direct the simulation experience, while reviewers watch behind one-way glass and evaluate.

It is in this special environment that residents are able to experience something not always effectively taught in medical school: hands-on, experiential learning with close analysis from seasoned professionals. While much of what is taught in medical school is focused on "book learning" and lecturing—the practice of in-person, hands-on simulation promotes a much higher level of knowledge retention.

Incorporation of further end users is possible. The facility's inclusion of additional NCH staff will increase over time, and it will eventually include outside personnel as well (allied healthcare professionals, police officers, and paramedics). By providing training to so many professionals, the sim lab aims to produce better trained professionals who will in turn practice safer and more effective medicine.



THE DESIGN: A REFLECTION OF INNOVATIVE PROCESS

The spirit of this project is one of unrelenting innovation—a space meant to push the limits and abilities of future generations of health-care practitioners—and the space reflects this very idea. A sophisticated, yet restrained palette of gray tones and natural wood captivate the eye without distracting. Branding and signage is brought to life with illumination that blends with the overall lighting plan of the space.

Felt panels and high NRC Acoustibuilt ceilings are featured in particular educational areas to create acoustic comfort during debriefings and educational sections. Elsewhere, sparse, monotone use of a dark blue adds a touch of the dramatic to the otherwise neutral design.

Throughout the nearly 12,000 square feet of designed space, young physicians will find attractive spaces working together to create an overall sleek environment.



However, like all Studio+ projects, the key to the Judith and Marvin Herb Family Simulation Center is not its aesthetics, but the people who will ultimately be impacted by the space.

Dr. Douglas Harrington, the Medical Director of the new facility, verbalizes the true impact of the project better than we can:



“THE NEW SPACE ALLOWS US TO EXPAND OUR CAPABILITIES AND OFFER EVEN MORE REALISTIC SIMULATIONS TO PREPARE OUR STAFF AND FRONT-LINE EMERGENCY WORKERS IN OUR COMMUNITY FOR ANY SITUATION.” - Dr. Douglas Harrington



— AUTHOR

Taylor Dupree Brewington is a writer and researcher focused primarily on subjects that express creativity and promote wellness. He frequently collaborates with industry experts to create compelling, publishable work in a variety of fields.




FIRM IN THE CLOUDS

Studio+ Embraces Cloud-Based Architecture for Enhanced Collaboration

In a world driven by technological innovation and the ever-expanding demands of a modern workforce, companies must constantly adapt to remain competitive. Studio+ embarked on a transformative journey from a localized server setup to a cloud-based infrastructure. This strategic move was rooted in our need for

improved collaboration, streamlined maintenance, and reduced costs across multiple locations. The transition took three months and involved the meticulous transfer of existing data, culminating in a cleaner, more organized file structure that reflects the firm's commitment to innovation and efficiency.



Studio+'s expansion across various locations marked a pivotal moment in our evolution. With growth came the need for seamless collaboration among teams stationed in different geographic areas. The previous local server setup had its limitations. Remote users were tethered by the necessity of VPN access, leading to time-consuming connections and lost work due to frequent disconnections. The process was further hindered by the requirement for additional hardware in server rooms, causing frustration and inefficiency. Moreover, maintaining and upgrading these servers incurred considerable costs that could be better allocated elsewhere.

WHY THE SWITCH?

The Transition Journey

DATING GATHERING AND RECONSTRUCTION

Over the span of three months, Studio+ embarked on a transformative journey. The first phase involved gathering existing data from the local servers, ensuring that no crucial information was left behind.

Then came the organization of this data, an opportunity we seized to revamp our file structure. This restructuring would pay dividends by simplifying file access and enhancing data retrieval efficiency.

STREAMLINING OPERATIONS

The most critical phase, migration to the cloud, was a rigorous process that demanded significant IT expertise. Data that had resided locally for years found its new home in the cloud, a secure and flexible environment designed to accommodate Studio+'s evolving needs.

The migration was not without its challenges. For instance, Studio+ faced issues with sharing files across different studios due to inconsistencies in file paths. This obstacle, however, spurred them to unify our file naming conventions and organizational practices across all locations, further streamlining our operations.

Pros of the Cloud Transition

The benefits of this bold transition quickly became evident. Gone were the days of VPN struggles, as the cloud-based architecture required no such barriers. This resulted in faster and more reliable remote work experience. Collaboration across Studio+'s six locations improved exponentially, with all company data accessible from one location. The ability to share files and large documents seamlessly transformed external coordination, saving valuable time in project execution. Perhaps most notably, the transition allowed for file access away from the studio, empowering employees to carry vital project data in the palm of their hands. The mobile accessibility proved invaluable during client meetings, job site visits, and punch walkthroughs.

Data transparency also saw a remarkable improvement. With version history and metadata information readily accessible, the potential for lost data through email exchanges or other transfer methods was greatly diminished. The integration of the cloud also ensured the continuity of Adobe files for request for proposal responses, eliminating concerns about broken links and lost work during the transition.



In today's hybrid and remote-first office environments, content is the most exposed data type. Egnyte's all-in-one platform made it simple and easy for IT to manage and control a full spectrum of content risks – from accidental data deletion to data exfiltration to privacy compliance and much more – all while giving our team members the tools they need to work faster and smarter, from any cloud, any device, anywhere.

Learn more about Egnyte's Cloud-Based Software at Egnyte.com

WHICH SOFTWARE.?

Considerations and Future Path

NAVIGATING CLOUD CHALLENGES

While the switch to the cloud brought about numerous advantages, Studio+ also recognized certain challenges. The need to purchase cloud storage, while essential, necessitated additional investments in backup solutions for future archiving. Furthermore, the cloud architecture incurs a per-user cost, which the firm had to factor into the budget. The migration demanded substantial IT efforts, underscoring the significance of proper planning and expertise.

AUTODESK

For tasks involving Autodesk files, Studio+ acknowledged that optimal utilization is achieved through Autodesk's own cloud services. While the cloud-based infrastructure improved overall workflow, they recognized that further integration with Autodesk Construction Cloud could potentially enhance their Autodesk-specific projects.

LOOKING FORWARD

In the end, Studio+'s journey from a localized server setup to a cloud-based architecture stands as a testament to our commitment to progress. By embracing innovation and overcoming challenges, we have not only improved their operational efficiency but have also positioned ourselves as a forward-looking entity ready to adapt to the ever-changing landscape of the architecture and design industry. +



generative design

genAI is gaining ground

Within the AEC industry, AI's possible impact will lower design time substantially. The scope of design can increase considerably, and innovation and ideation will be at your fingertips easier than ever. The positive impact on current AEC processes can significantly improve due to AI automation that utilizes data-driven design. This results in safer projects, more informed decisions, and less rotework.



ive
ve



what is generative design?

Generative design in architecture refers to a design approach that involves using computer algorithms and computational methods to generate and explore a wide range of design solutions for architectural projects. This process relies on input parameters and design goals provided by architects or designers to iteratively create and evaluate multiple design options.

Generative design tools typically require designers to define the design objectives, constraints, and parameters first. The algorithm then generates a range of design possibilities that adhere to these parameters. Designers can then evaluate and select the most promising options for further refinement and development.



KEY CHARACTERISTICS OF GENERATIVE DESIGN IN ARCHITECTURE INCLUDE

1. Algorithmic Creativity

Generative design uses algorithms and rules to generate a multitude of design variations. These algorithms can be based on mathematical formulas, evolutionary processes, or other computational techniques.

2. Exploration of Design Space

By inputting different parameters and constraints, generative design tools can explore a vast design space that human designers might not be able to examine manually in a reasonable amount of time.

3. Iterative Process

Designers can refine the generated solutions through an iterative process, providing feedback to the algorithm and influencing the subsequent iterations.

4. Optimization

Generative design often incorporates optimization criteria, such as structural integrity, energy efficiency, cost-effectiveness, and other performance metrics, to help find designs that meet specific functional and performance requirements.

5. Innovative Solutions

The process often leads to innovative and unconventional design solutions that might not have been conceived through traditional design methods.

6. Efficiency and Time Savings

Generative design can help architects rapidly generate a variety of options, saving time in the initial design phases.

7. Human-AI Collaboration

While generative design is powered by algorithms, it is not meant to replace human designers. Instead, it serves as a tool for collaboration, enabling designers to leverage computational power to enhance their creative process.

8. Adaptation to Context

Generative design can take into account site-specific conditions, user requirements, and other contextual factors, resulting in designs that are better suited to their environment.

ON THE HORIZON

We dug into several tools that explore different ways to use Generative design. We're still early to the AI in architecture revolution, but it is promising a better future for AEC. The tools we explored are still in beta versions and under development, leading to our conclusion that software developers are still working out the kinks. Most need more development and are approaching the finish line, but until then we're keeping our eyes peeled and testing as they are released.



AI of choice: Autodesk Forma

Formerly Spacemaker, Autodesk Forma helps planning and design teams deliver projects digitally from day one. The innovative software uses conceptual design capabilities, predictive analytics, and automations to make solid foundations for your projects.

- Unlock efficiencies with intuitive project setup, design automations, and fluid connectivity with Revit
- Use data-driven insights in real-time to make fast, smart design decisions that reduce risk and improve business and sustainability outcomes
- Improve collaboration and secure buy-in by using data and visuals to tell a compelling design story that can help you win more bids



This article had contributions from Studio+ Directory of Technology, Molly Dyal.

Dyal is a beta tester for new tools under the Autodesk umbrella, and will be attending the Autodesk University this fall. Stay tuned as we further explore these exciting new tools and move towards a safer, more innovative future. +

PROJECTS ON THE RISE

recently awarded projects.

NORTHWESTERN MEDICINE

Naples Medical Office Building

Recently awarded the contract for a new MOB with Chicago-based Northwestern Medicine. This will be NM's first presence in Florida. The ground-up MOB is located on 3.5 acres, 1.5 miles north of downtown Naples. Studio+ and CannonDesign will partner for this project.

RANCHO SANTIAGO COMMUNITY COLLEGE DIST.

Continuing Architectural Services

Continuing services contract for architectural services for Rancho Santiago Community College District (RSCCD). RSCCD encompasses 2 community colleges, a training academy, and an additional 5 education centers within the district's zone.

CHILDRENS HOSPITAL LOS ANGELES

Playground Areas Replacement

Conceptual design plans for 2 playgrounds on the CHLA Campus. Scope includes replacement and the acquisition of new equipment, and surfacing/landscaping for both projects.

SWFL AFFORDABLE HOUSING CHOICE FOUNDATION

Senior Living Residences

The 75,000 SF project will consist of one hundred (100) one-bedroom residential units. The building will have shared amenities, including a senior café, craft room, management offices, and support spaces

CLEARSKY LAKE CITY

Rehabilitation Hospital

This project entails the design of a 42,500 SF single-story, 36-bed orthopedic rehabilitation hospital in Lake City, Florida.

VENTURA SCHOOL DISTRICT

Continuing Architectural Services

Continuing services contract for architectural services for Ventura Unified School District (VUSD). VUSD encompasses 26 schools within the district's zone.

BABCOCK RANCH Babcock Neighborhood School Expansion

K-8 school in America's first solar-powered community, Babcock Ranch, will be expanding to accommodate the community's growth. Studio+ designed the original building that was constructed in 2015.

PREMIER WOMENS CARE Medical Office Building

Schematic design has begun for a new 30,000 SF MOB in Cape Coral. The entire building will be utilized for the OB/GYN practice to include Mammography and Ultrasound Services, Administration Support, 13 Pod Clinical Exam Space, and Clinical Procedure Services.

PALMDALE SCHOOL DISTRICT Facilities Construction Program

Continuing services contract for architectural and engineering services for Palmdale School District (PSD). PSD has over 40 schools within the district's zone.

ALTAR'D STATE Retail Stores

New flagship location at Easton Town Center in Columbus, OH for for women's fashion retailer Altar'd State.

CLEARSKY LECANTO Ortho Rehabilitation Hospital

Newly designed orthopedic rehabilitation hospital in Lecanto, 36-hospital beds, physical therapy gym, cafeteria and commercial kitchen, mobility park, and required support spaces.

LEE HEALTH Oncology and Infusion Center

Studio+ recently completed two projects for Lee Health, a new 17,600 SF Oncology Physician Clinic, including a 32-bay Infusion Center at Bonita Community Health Center. The project also included the addition of a 700 SF Shared Staff Lounge.

DESOTO MEMORIAL HOSPITAL MRI Suite

Recently completed 3,000 SF Imaging Department expansion, including an MRI suite with a 1.5T GE magnet.

THE LOFTS AT HANNAH LAY Suite 307 The Barnwell Condo

Renovation of a 3,172 SF condo in Traverse City, Michigan.

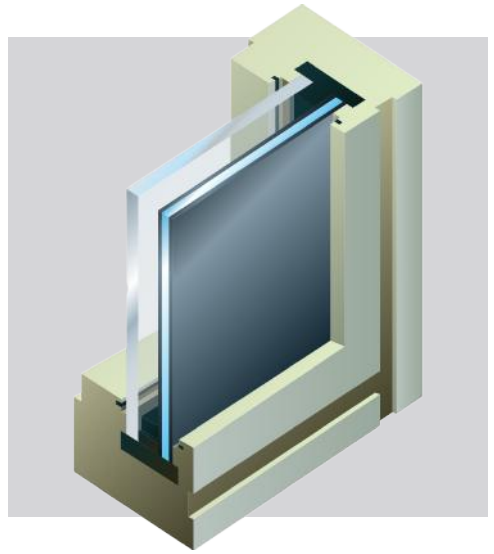
TOPPING OFF

projects approaching
completion.

product parade

innovative products, from brands we love

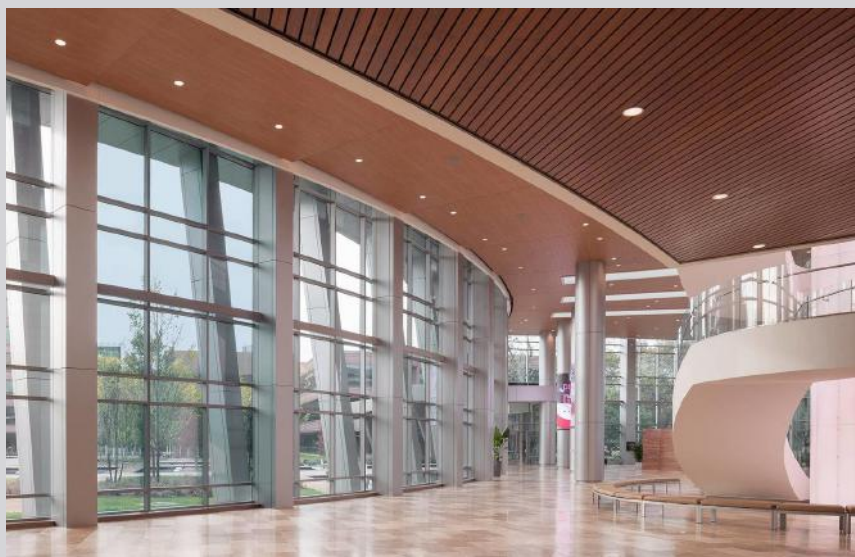




View Smart Windows™



View transforms buildings into responsive environments that continuously adjust to meet human needs for natural light, connection to nature, fresh air, and comfortable temperatures, while improving energy efficiency and increasing profits for building owners and their tenants.



Transform your building into an experience

View Smart Windows intelligently adjust in response to outdoor conditions, providing continuous access to natural light and outdoor views, while maximizing occupant comfort.

View Intelligence® uses AI to determine whether, when, and how much to tint each window based on the position of the sun, cloud cover, outdoor temperatures, interior floorplans, and more.

View Immersive Display™ transforms smart windows into transparent, digital, interactive surfaces for entertainment, video conferencing, content creation, advertising, and more.

view®

info@view.com

OmniRoom

Modular room-in-room solution

The most comprehensive room-in-room system on the market gives you countless ways to design ultra-comfortable workspaces. Paving the way for a flexible revolution in office design. Effortless to arrange and rearrange. Enjoyable to work in. Excelling your people's potential.

OmniRoom makes offices fully agile. With durable components and smart modular system, Rooms can be expanded, divided and reshaped countless times. OmniRoom is constructed from aluminum, a lightweight and 100 percent recyclable material.



THE ROOM FOR EVERY OFFICE TASK



MUTE.

hello@mute.design



GreenFrame



GreenFrame is a floor screen with lighting that gives potted plants and greenery a prominent role in interiors, even where the daylight may not be enough. GreenFrame is made entirely of solid ash wood and contributes to better indoor climate, nicer workplaces and happier plants.



Find your wellness space

GreenFrame is a biophilic space divider that makes a significant aesthetic visual contribution to any interior. Its integration of plants and lighting into a solid wood furniture piece not only adds beauty and comfort, but also has the potential to improve indoor climate and acoustics. The beauty of GreenFrame lies in its ability to host and illuminate most types of plants, from tropical orchids to desert cacti. Its character blooms in symbiosis with its paired plants, making it an atmosphere-improving icon.

GreenFrame can be placed as a stand-alone oasis in the middle of a room or as backdrops adjacent to walls. It can be arranged in rows angles or paths. The GreenFrame is fully customizable, allowing individuals to express their own floral tastes. A partition which is easy to assemble, move around and reassemble when needed – making it a versatile “plug-n’-play” product.

The logo for thinkspace, featuring the word "think" in a dark blue font and "space" in a lighter blue font. Above the letter "i" in "think" are three small, light blue circles of increasing size, arranged in a diagonal line.

thinkspaceoffice.com

CULTU

CULTU

CULTU

CULTU

CULTU

URE

URE

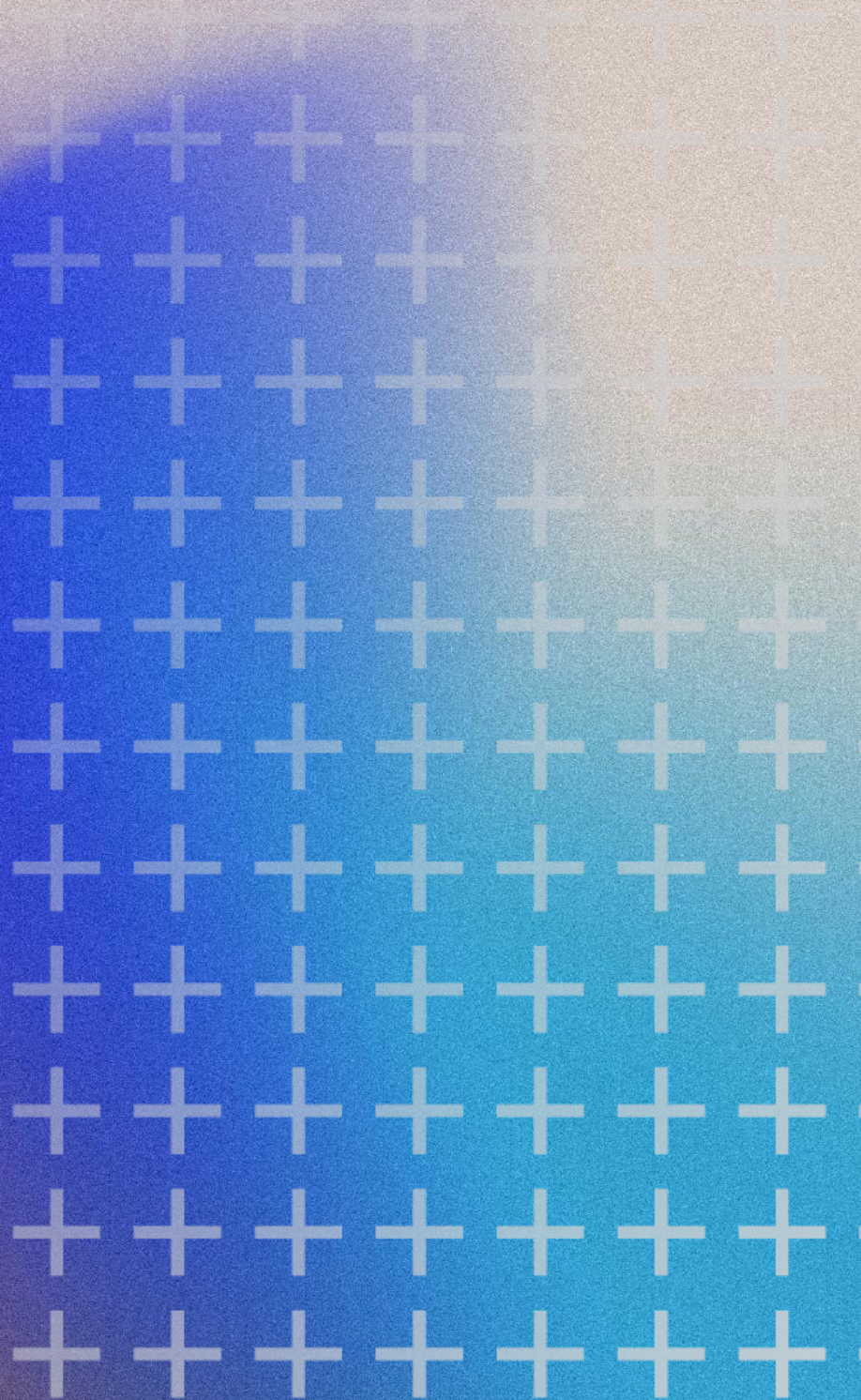
URE

URE

URE

The culture of a company
is the sum of the behaviors
of all its people.

-Michael Kouly



STEM XPOSURE'S

GLOBAL DESIGN CAMP

Studio+ continuously looks for ways to shed light on the world of architecture and design to students of all ages. Non-profit organization, STEM Xposure, aims to expose minority students to STEM careers through various

camps organized throughout the year. From the science of beauty, to the legalization of tiny homes, the program offers more than design camps and has received several endorsements, including Tampa Florida Mayor Jane Castor.

The Global Design Camp, an initiative organized by STEM Xposure Inc., has emerged as a dynamic platform for fostering global awareness in the field of architecture. In its endeavor to "Connect the World through Architecture," the camp brings together a diverse group of students from around the globe. Their mission? To collectively develop innovative and affordable housing solutions that address the pressing issue of the affordable housing crisis, not only in the Tampa area but also in the regions where these students reside.



Robyn Donaldson

President STEM Xposure, CEO Renew Construction Services, Community Real Estate Developer

On the first day of the camp, the objectives were as ambitious as they were enlightening. The students embarked on a journey to unravel the multifaceted role of an Architectural Designer. Studio+'s own Rachel Hunter kicked off the event by delving into "Architecture 101" and emphasizing the imperative for more BIPOC representation in the field. They delved into the intricacies of evaluating a Request for Proposal, a crucial skill that aids in comprehending client requirements accurately. Distinguishing between project criteria and limitations emerged as another pivotal aspect, ensuring that the proposed designs align with creative aspirations and real-world constraints. One of the primary focuses was on recognizing the client and deciphering their needs, desires, and expectations, which lays the foundation for successful architectural endeavors.



Rachel Hunter, AIA, NCARB

Project Manager | Associate Principal
Studio+

STEM XPOSURE: GLOBAL DESIGN CAMP

Remarkably, the Global Design Camp transcends geographical boundaries, as more than a hundred talented students spanning four different time zones united under its banner. This extraordinary convergence of minds, cultures, and perspectives constitutes the driving force behind the camp's success. The camp's overarching objective of pro-



viding practical solutions to the affordable housing crisis took center stage. Through their collaborative efforts, the students crafted innovative designs that have the potential to transform communities and uplift individuals in need of affordable housing options. By utilizing architecture as a vehicle for positive change, the Global Design Camp transcends being just an educational event—it becomes a transformative force for good.



DID YOU KNOW?

Black women comprise just 0.4% of licensed architects, underscoring the critical need for increased diversity in architectural professions.



Mayor Jane Castor of Tampa extended a warm welcome to the esteemed guest, Elizabeth Muli, the Minister of ICT, Education, and Internship from Makueni County, Kenya. This gesture not only reinforced the international nature of the camp but also underlined the significance of such cross-cultural exchanges in promoting global understanding and collaboration.



**SHE
DRAWS
TAMPA
BAY**

SHE DRAWS TAMPA BAY

Another STEM Xposure event Studio+ is proud to be a part of was the the "She Draws Tampa Bay". An architecture and construction camp focused on young girls in STEM fields. At this camp, local girls 13 - 17 years old will work in teams to provide affordable housing options for the Tampa Bay area. The design solutions developed will serve to address the affordable housing crisis in the Tampa area as well as the communities where the students reside. Students will interact with different design software including SketchUp - long-time partners of STEM Xposure Inc.

Students also have the privilege to work together with various experts in the Building Construction profession and the STEM industry. The top three projects are selected and considered for construction. Since 2018, STEM Xposure Inc. Has impacted over 500 students, with many now pursuing Architecture for their career path.

**LEARN
MORE**

stemxposure.com

info@stemxposure.com

813.461.5599

new offic



Traverse City, Michigan

902 W Front St.

Suite 100

Traverse City, MI 49684

e views

Studio+ Traverse City gets a new address.

Our Traverse City team has been hard at work getting their new office up and running. From painting walls to hanging up the Studio+ neon logo sign, we're excited for their new digs.



Want to set-up a meeting at Studio+ Traverse City? Email principal, **Meghan Frederick** to get started. MeghanF@wearestudioplus.com

Five New Faces at Studio+ **05**

We've Been Busy Hiring

At Studio+, we never stop searching for top talent. And since May of 2023, we have been doing just that – welcoming nine new team members to three of our office locations, and even full-time remote hires. So instead of us listing out our new hire's achievements and accolades, we thought we would speak more about who they are – which is ultimately why we hired them.

Let's not beat around the bush...

We care about award winning project experience, but we also care about who you are and how you fit into our team. So when hiring, we tend to seek out people based off their unique path, influences and experience, and dive deeper into their intellectual biography. This allows us to understand more about their work, without them even mentioning it.



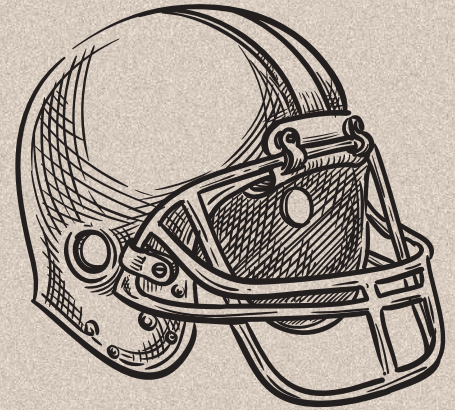
New Hires (top to bototm):

- Scott Mikrut
- Lafayette Bonner
- Ava Demorow
- Karan Solanki
- Hanna Merrithrew

Scott Mikrut

Title: Project Manager

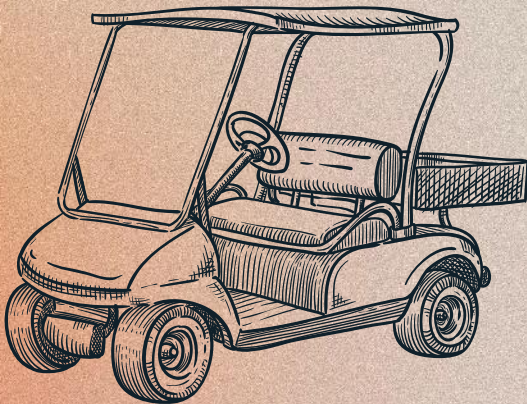
Facts: The architectural maestro with a knack for creating unforgettable spaces and unforgettable family adventures in the Sunshine State. With over two decades of experience spanning hospitality, food service, themed entertainment, and education, he has a knack for the fun stuff. In his free time, Scott's the dad who turns weekends into epic beach trips, theme park adventures, and sporting spectacles. He's also a die-hard baseball fan, from Division I glory days to the "old guy" rec leagues. Go Cubs Go!



Ava Demorow

Title: Architectural Designer

Facts: Graduated with a B.S. in Architecture in 2023 from Lawrence Tech and currently mastering the art of architecture there too. Her love for architecture started in high school and grew with hands-on experience. Hailing from the lively Metro Detroit area, she knows how to keep the energy up, whether it's in design or a family sing-and-dance-off. On those beautiful Michigan days, she seizes the opportunity to hit the golf course, because who says architects can't have a killer swing?



Hanna Merrithrew

Title: Design Intern

Facts: Hanna, hailing from the charming town of Traverse City, MI, is currently pursuing her degree in architecture at the University of Michigan. When she's not sketching floor plans or debating the merits of arches versus columns, she's donning her arcade hero cape to swoop in and rescue stuffed animals from claw machines like a pro – seriously, you've never seen someone strategize with such intensity for a plush unicorn.



Lafayette Bonner

Title: Graduate Designer

Facts: Jacksonville native who swapped health insurance claims for a more colorful palette – a Graduate Designer with a passion for creating transformative solutions at Studio+. With a Master's in Interior Design from the University of Florida (Go Gators!), this design enthusiast is all about materials, lighting, and planning – because even the fanciest space needs the right lighting to shine. When not designing, you'll catch them jet-setting with friends and family, beachside with a flair for fashion, or mastering the fine art of YouTube binge-watching.



Karan Solanki

Title: Project Coordinator

Facts: Meet Karan, a whirlwind of education and adventure! Starting his academic journey at SCET in Surat, Gujarat, India, Karan soon rocketed to new heights by snagging a master's degree from SCAD (Savannah College of Art and Design). Karan's not just a project coordinator; he's also the ultimate "chill" master. He and his buddies are the undisputed champions of visiting beer breweries and savoring the good life. They've turned "chilling" into an art form, and Karan is the curator of the coolest experiences.

Interested in transforming lives through design?

Join the Studio+ team in one of our six offices.

Send your resume and portfolio to marketing@wearestudioplus.com and make sure to mention why you would be a great fit at Studio+.



elevate & celebrate

recent promotions at studio+



VANESSA TYLER

Principal
Brand Ambassador

With 10+ years of industry experience, Vanessa Tyler leads business development at Studio+ in Fort Myers, FL. She's all about forging strategic bonds and sharing the Studio+ vision, along with her knack for connecting the community and architecture.

Vanessa, a graduate of Indian River State College (Interior Design) and Florida Gulf Coast University (Marketing), joined Studio+ in 2013, blending her design expertise into our projects. She's involved in multiple organizations around the SWFL region including Chair at Hope Clubhouse, Treasurer for Women in Healthcare's Florida Chapter, and a part of the Management Committee for ULI SWFL.

Originally from Barranquilla, Colombia, she has a wonderful husband, a spicy 6-year-old daughter, and three furry companions. Beyond work, Vanessa's passion for family, travel, and cultural exploration shines through, and she's always ready to lend a helping hand – whether it's in design or in the community.

MOLLY DYAL

Director of Technology
Associate Principal

Molly spent the majority of her life in Atlanta, Georgia, prior to moving to the Tampa Bay area. Her academic journey led her to pursue Interior Design at the Art Institute of Atlanta and it was during her initial stint at a design firm that she stumbled upon her true calling - a fervent passion for working with Revit. Molly's career path swiftly veered towards collaborating closely with architects and engineers, and after a span of eight years, she found herself not only teaching but also crafting customized workflows across various facets of the AEC industry.

Now at Studio+, her role evolved from assisting the team in enhancing their proficiency in Revit and devising tailor-made solutions within the software, to managing operational workflows throughout the entire firm.

If you can't locate her in the studio, chances are Molly can be found at the beach, frolicking with her beloved canine companions, Cubby and Elly. With an ardent affection for the great outdoors, she makes it a point to dedicate most of her leisure time to outdoor activities.



HEMAL TILVAWALA

Senior Project Coordinator

Hailing from Ahmedabad, India, Hemal discovered his passion for architecture during high school, leading him to pursue a bachelor's degree at CEPT University, located in the city that boasts projects by architectural giants like Le Corbusier and Louis Khan.

His love for exploring diverse cultures and spaces inspired him to chase his dreams in the US, where he earned his master's degree in the bustling streets of New York City. Besides his architectural endeavors, he's a photography enthusiast, fitness fanatic, and a talented cook.

He proudly belongs to BAPS Swaminarayan Sanstha, a volunteer-driven organization dedicated to promoting faith, unity, and selfless service in society.





THE CHARENTE

studio+

the charente | studio+ quarterly
edition 6
autumn 2023

email us to subscribe
marketing@wearestudioplus.com

www.wearestudioplus.com