

EARLY YEARS WALES MEMBERSHIP INFORMATION PACK



2026 - 2027

1

2



**Early Years
Wales**
**Blynyddoedd
Cynnar Cymru**

A word from our CEO



At Early Years Wales, we are proud of our members and the work that you do for the children in your care across Wales. We provide our services, products, and training with the aspiration of making your work easier, helping you with opportunities that are innovative and exciting, and sharing professional learning practice that is motivating and empowering.

We continue to add to the range of member opportunities, for example, last year every member was able to access our National Conference online without charge – we will repeat this offer in 2026/27.

We continue to grow our Movement Champion resources, and will soon have new, exciting video and reading materials available to members thanks to our wonderful partners in KPMG Foundation.

Through our work and networks, members receive informative and useful supporting materials such as the recently shared Early Attention guide from the Centre for Educational Neuroscience – Early Years Group. Further plans are in place for additional outputs that will come directly to every member of Early Years Wales.

Our Welsh language support is universally accessible to members, including your Welsh Promise support, Camau, Little Movers Little Speakers, resource hubs and online assessments, as well as opportunities to learn with other practitioners through Llwyddo Together and other Welsh practice focused CPD ; all fabulous services and packages to enhance or develop your integration of the Welsh language and continuing to be added to during 2026/27.

We will continue to campaign and advocate for the sector, for you, our members, and the childcare workforce. This commitment spotlights the fantastic practice that you do in your work, and advocating for further investment into the early years sector.

TOGETHER WE WILL PLAY, LEARN, THRIVE!

A large, stylized signature in black ink that reads 'Dave Goodwin'. The signature is written in a cursive, flowing style. To the left of the signature, there is a horizontal line that tapers off to the right, suggesting a signature line or a decorative element.

Membership Categories

WHETHER YOU RUN A SETTING, ARE WORKING TOWARDS A CAREER IN CHILDCARE OR SIMPLY HAVE AN INTEREST IN ALL THINGS EARLY YEARS... WE HAVE A MEMBERSHIP PACKAGE FOR YOU...

£95

£45 PER ADDITIONAL SITE



EARLY YEARS SETTING

includes schools

Who it's for:

Childcare providers and schools

You get:

- ✓ Access to free and discounted training for all staff
- ✓ Free and discounted publications
- ✓ National Conference
- ✓ Bi-annual regional roadshows
- ✓ WhatsApp messaging service
- ✓ Business support
- ✓ CEO e-bulletin
- ✓ Grant funding support (subject to criteria)
- ✓ Start-up assistance
- ✓ Parent support
- ✓ Enhanced Learning Projects with support
- ✓ Third-party discounts
- ✓ *smalltalk* subscription
- ✓ Forums and steering groups
- ✓ Bitesized Learning
- ✓ Governance Support including fast track CIO service
- ✓ Curriculum Support
- ✓ Welsh Language Support
- ✓ Setting and Job vacancy advertising
- ✓ Digital Assets Pack
- + Asynchronous training (additional cost)
- + Templates (additional cost)
- + Quality for All Scheme (additional cost)

£30

HOMEBASED CHILDCARE

Who it's for:

Anyone providing childcare from their own home.

You get:

- ✓ Access to free and discounted training
- ✓ Free and discounted publications
- ✓ National Conference
- ✓ Bi-annual regional roadshows
- ✓ WhatsApp messaging service
- ✓ Business support
- ✓ CEO e-bulletin
- ✓ Grant funding support (subject to criteria)
- ✓ Start-up assistance
- ✓ Parent support
- ✓ Enhanced Learning Projects with support
- ✓ Third-party discounts
- ✓ *smalltalk* subscription
- ✓ Forums and steering groups
- ✓ Bitesized Learning
- ✓ Curriculum Support
- ✓ Welsh Language Support
- ✓ Setting advertising
- ✓ Digital Assets Pack
- + Asynchronous training (additional cost)
- + Templates (additional cost)
- + Quality for All Scheme (additional cost)

If you have any queries regarding our membership packages, please do not hesitate to contact membership@earlyyears.wales



JOIN US TODAY



.. continued

£30

TODDLER GROUP

Who it's for:

Community groups

You get:

- ✓ Priority access to free and discounted training
- ✓ Free and discounted publications
- ✓ Toddler Group Guidelines and Templates
- ✓ National Conference
- ✓ Bi-annual regional roadshow
- ✓ WhatsApp messaging service
- ✓ Business support
- ✓ CEO e-bulletin
- ✓ Grant funding support (subject to criteria)
- ✓ Start-up assistance
- ✓ Parent support
- ✓ Enhanced Learning Projects with support
- ✓ Third-party discounts
- ✓ *smalltalk* subscription
- ✓ Forums & steering groups
- ✓ Bitesized Learning
- ✓ Governance Support including fast track CIO service
- ✓ Curriculum Support
- ✓ Welsh Language Support
- † Setting and Job vacancy advertising
- † Digital Assets Pack
- † Asynchronous training (additional cost)

£30

INDIVIDUAL

includes parents.

Who it's for:

Individuals, parents, or professionals with an interest in the early years sector.

You get:

- ✓ Access to free and discounted training
- ✓ Free and discounted publications
- ✓ National Conference
- ✓ Bi-annual regional roadshow
- ✓ CEO e-bulletin
- ✓ Digital *smalltalk* subscription
- ✓ Forums and steering groups
- ✓ Bitesized Learning
- ✓ Curriculum Support
- ✓ Digital Assets Pack
- + Asynchronous training (additional cost)

£0



ACADEMIC EMAIL ADDRESS REQUIRED

STUDENT

Who it's for:

Individuals currently studying towards a career in childcare.

You get:

- ✓ Access to free and discounted training
- ✓ Free and discounted publications
- ✓ National Conference
- ✓ Bi-annual regional roadshows
- ✓ WhatsApp messaging service
- ✓ CEO e-bulletin
- ✓ Parent support
- ✓ Enhanced Learning Projects with support
- ✓ Third-party discounts
- ✓ Digital *smalltalk* subscription
- ✓ Forums and steering groups
- ✓ Bitesized Learning
- ✓ Curriculum Support
- ✓ Welsh Language Support
- + Asynchronous training (additional cost)

Meet the team

THERE ISN'T MUCH WE DON'T KNOW ABOUT THE EARLY YEARS SECTOR. WHATEVER YOUR QUERY, WE ARE HERE TO HELP.

David

Chief Executive Officer



Julie

Head of Training,
Learning and
Development



Leo

Head of Policy and
Advocacy



Lisa

Finance Manager



Moya

Head of Membership
and Local Authority
Contracts



Amy

Childcare Provider
Support Officer



Deb

Development Worker



Donna

Development Worker
& Central Support
Co-ordinator



Elaine

Development Worker



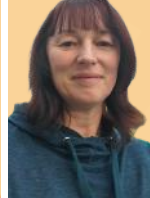
Karen

Central Support
Co-ordinator
QfA Co-ordinator



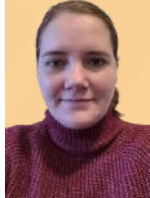
Melanie

Development Worker
& Central Support
Co-ordinator



Natalie

Development Worker



Charlotte

Communication and
Marketing Co-ordinator



Claire

Quality Assurance
Co-ordinator



Emily

Support Officer



Hannah

Welsh Language
Support Worker
(Maternity Cover)



Kelcie

Early Years
Education Officer



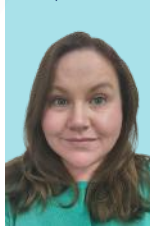
Matt

Welsh Language
Project Lead



Siobhan

Welsh Language
Development Officer



Dawn

Membership
Administrator



Felicity

Business
Administration Officer



Liz

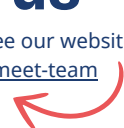
Finance Administrator



Contact us

For contact details, please see our website

www.earlyyears.wales/meet-team



THIRD-PARTY OFFERS AVAILABLE FROM



Early Years Wales Member Support

As a member of Early Years Wales, you benefit from our **support** across a wide range of services. Our member shop allows you to access high-quality resources including downloads and **publications** we prepare for your benefit. You have access to our **policy and procedures** pack at reduced prices along with opportunities to **promote** your setting through your work with us and **advertising** vacancies that you have. Our Membership team are there to support you with your practice. This can include information about **policy, practice, staffing, grant funding** and much **more**. Additionally, as a member you benefit from **priority** bookings and opportunities with our third party partners.

Through our network opportunities, and through our communications with you, members hear about the developments for the sector that are happening in Wales. We **represent** your views with policy makers in the Welsh Government, with ministers, and with other strategic partners like Care Inspectorate Wales.

We value your membership, and hope you value being part of Early Years Wales. As with all partnerships, the more we collaborate, share and work together the more you will feel you get out of your membership.

Look out for your monthly e-bulletin with all our latest opportunities, and your periodic magazine *smalltalk* which shares member **exclusive** opportunities and in-depth articles of interest.



Publications

VARIETY OF FREE AND DISCOUNTED PUBLICATIONS DESIGNED TO SUPPORT YOU IN THE DAY TO DAY RUNNING OF YOUR PROVISION.



Schools, School Leaders, and Head Teachers

Early Years Wales is the organisation to join to understand children in their early years of childhood, and the legislation and compliances required for running childcare. For teachers and school leaders working with children aged 7 and under, our training is incredible value and draws on experts in the field of child development, neurodiversity, early child development, brain science, ALN, anti-racist practice, movement and much more.

As we know, children's chronological age is only one way to understand their needs. Many of our courses are relevant to working with older children too. You'll see from the Foundation Learning section the wide-range of opportunities through this service. Our wider training team have further pedagogy, training, resources and opportunities to share with you, and our Welsh language team provide access to Welsh language training, resources and support too.

Head teachers benefit from the support in managing sites where childcare is co-located. Our bespoke charity governance team can support you with setting-up, running, and managing a charity childcare provision. We can also support you with tendering and procurement processes, start-up registration, and annual returns such as Care Inspectorate Wales' Self Assessment of Service Statement (SASS).

Additionally, as outlined above, we are available to support you with staff development needs. We can run bespoke CPD courses, staff meetings, voluntary board training, and more to help you provide the very best service for children in their early years.



Foundation Learning & Curriculum Support

Our Early Years Education Officer, Kelcie Stacey, hosts a series of regular drop-ins for conversations about the curriculum. These opportunities allow you to share good practice with other providers, ask questions about curriculum implementation, pedagogy, and assessment, and raise issues that you would like the Welsh Government to be aware of.

In addition, for more bespoke support and advice, Kelcie is available to work with providers and practitioners to help.

As a member you will have access to a range of events/training opportunities to support your delivery of the curriculum for funded non-maintained nursery settings. As well as facilitating events/training, you will be signposted to ongoing professional learning opportunities and resources to further deepen your knowledge of how we provide the best possible learning opportunities for children.

Training

Our training offer supports the childcare sector to access quality training, enabling practitioners to access courses that support them to gain the skills that are needed to progress in their childcare career and access employment opportunities through quality professional development opportunities.

Our training planner provides an opportunity to support both Early Years educators and Home based Learning settings to be the best they can be by identifying the professional development opportunities which are right for you.

These support:

Knowledge – updating knowledge in practice and organisation specific developments.

Skills – demonstrable application of knowledge and the use of skills in the workplace.

Behaviours – demonstrable use of appropriate values, conduct and relationship skills and self-assessment

Reflective practice – review and reflect using feedback on learning and development activities.

We deliver a range of highly effective, quality training opportunities to support the success of early years practitioners so they can provide the best possible outcomes for children, ensuring every child can develop, learn, achieve, and excel. Additional opportunities are added throughout the year in response to feedback by our members

Quality for All (QfA)



QfA is designed to support childcare settings like yours to be the best that they can be and provide the highest quality experiences for children, their families and your staff team.

Completing QfA will help you to prepare for other assessments and inspections by supporting you to be a reflective practitioner.

Other benefits include:

- Professional Discussion with an experienced Quality Advisor.
- Focussing on how well your service is managed, staffed and resourced.
- Planning for future improvements.
- Enabling you to highlight and celebrate activities or achievements.
- Highlighting excellent practice and signposting to support services if needed.
- Opportunity to work towards Quality Cymraeg Assessment.
- Advertising your QfA achievement to promote your service and stand out from the rest.

Governance Support

Good governance is highly important for voluntary managed organisations it enables them to be compliant with relevant legislation and regulation. It also promotes attitudes and a culture where everything works towards fulfilling the organisation's vision.

Our small governance team supports over 400 voluntary managed members in all areas of governance, we offer support and guidance with the aim of helping trustees and management committees to develop high standards of governance.

We signpost to useful material, provide template documents, factsheets, and policies and procedures to support them with compliance. As governance arrangements, legal requirements or regulation may differ for members so does the support the team offers, supporting members in all areas including as and when issues arise.

When working with members we monitor progress to help keep members on-track. We review status' regularly and highlight potential risks; supporting members to make changes where needed. Members' legal status' are checked and cross-referenced with the Childcare Inspectorate Wales (CIW), Companies House, and Charity Commission registration to reassure providers that all are in agreement.

Members receiving governance support range from, schools registering wraparound, sessional and full day care providers, after school clubs and/or settings that have had the wrong legal status recorded.



Policy and Advocacy

Leo Holmes, the Head of Policy and Advocacy, connects you, the childcare practitioner, to the changemakers in our national politics by advocating for the importance of the vital work you perform in supporting future generations in Wales. The overall goal of this work is to push for policy change which adds value to the early years sector, such as increased financial support from the Welsh Government, and a focus on the implementation of Early Childhood Play Learning and Care (ECPLC) policy into primary legislation.

As well as working with external partners in the Senedd to advocate for your needs, Leo collaborates with you, through bi-monthly policy working groups, to hear about how you feel you can be further supported by Early Years Wales. This includes the creation of internal template policies and guidance to assist your setting.

Leo is always on the end of an email to answer your questions and provide assistance with any policy related queries that may arise.

Welsh Language Support

As a member of Early Years Wales, you have access to comprehensive support to strengthen Welsh language development and enhance high-quality early years practice. Our dedicated Welsh Language Team works with settings to build confidence, develop a bilingual workforce, deliver the Active Offer, and progress through the Welsh Promise from Bronze to Gold.

Through Camau training and structured progression pathways like Llwybr Iaith, we provide practical, outcome-focused support to embed Welsh naturally into daily routines, play, and interactions. Our Welsh Promise Reflection Tool and Resource Hub offer clear guidance, themed activity packs, and materials to help you plan, evidence, and celebrate your journey.

Initiatives such as Little Movers, Little Speakers bring Welsh to life through movement, music, and storytelling, helping babies and families enjoy the language together. Our bilingual online communities such as Camau Conversations, Llwyddo Together, and the Welsh Promise Community Hub provide safe, supportive spaces to share practice, solve challenges, and learn collaboratively.

Practitioners are supported at every stage of their Welsh language journey with flexible online learning, mentoring, practical resources, and ongoing advice via email, virtual meetings, or in-setting visits, empowering you to create a confident, vibrant, Welsh-rich early years environment.



Working with Parents

Early Years Wales aims to support parents through contact with our settings, parenting page and Active Baby at Home Programme.

Active Baby at Home is run in a number of areas across Wales and is for families with one or more babies between the ages of 4 weeks to 8 months. The 6-week programme provides information about physical development, and early movement patterns, such as tummy time, crossing the midline, rolling, sitting, and crawling.

It provides opportunities for both baby and adult to move and play with everyday objects and materials, meet other parents, as well as gain new ideas to introduce movement-based play time into everyday routines that will support their baby's physical development and well-being.

JOIN US TODAY



Play, learn, thrive.



Early Years
Wales
Blynyddoedd
Cynnar Cymru



02920 451 242



info@earlyyears.wales



Early Years Wales 2018. Registered in Wales. Registered Office: Unit 9, Centre Court, Treforest, CF37 5YR.
Company limited by guarantee: 3164233. Charity: 1056381