

SKYLINE

WINTER 2019/20
ISSUE 11

Top FLIGHT

Gulfstream's new base cleared for take-off
Pages 18-19

COMPETITION

Win!

There are 5
Amazon Echo
Dots to win!
PAGE 26

European Union – Great things on the continent **PAGES 4-7**

OK Google! – The search engine giant's huge new home **PAGES 8-9**

Switch off! – When social media gets too much **PAGE 22**

WELCOME TO SKYLINE MAGAZINE

Your magazine... built by you



FIRST THOUGHTS

ANNA GRAY, HEAD OF MARKETING AND COMMUNICATIONS

FIRST MOVE

COME ON, GET INVOLVED!
IF YOU'D LIKE TO FEATURE IN
OUR NEW OPENING FEATURE,
GET IN TOUCH!
communications@severfield.com

Who were your first musical heroes?

I grew up listening to ELO and The Beatles, which I loved, but now I love country music!

What was the first job you wanted to do?

I always wanted to be a meteorologist, but I changed my mind because the weather here is too boring.

... and what was your first proper job?

When I graduated I got a job as a Press Officer for the National Railway Museum in York, where I worked for six years.

What was the first big project you worked on at Severfield?

I reviewed the overall internal communications. That led to *Skyline* magazine, *Steel Reel* newsletter and many other things, such as the intranet we're launching soon. Being involved in projects like this allows you to meet people right across the company. I love it.

What's the first thing you do when you get to work?

I get a strong coffee before tackling my inbox.

What's the first tip you'd give to a new starter?

The key is getting to understand the business structure and how it all fits together.

What's the first thing you do after you finish work for the day?

I call at my parents to collect my dog, Vegas. She's so spoilt she's never left on her own.

EMPLOYEE ASSISTANCE PROGRAMME



Our free service offers support with the stress of finances, health, addiction and more.



Call: 0800 030 5182



Reward GATEWAY

If you haven't registered yet, you're missing out! It's simple, just visit the page below to register – you don't need to include 'www.'
severfield.rewardgateway.co.uk

Did you know about our employee Reward Gateway?
It's where you'll find huge benefits, like:

Discounts

Both online and in-store

Vouchers

Discounts on 100s of vouchers



Cash back

Including deals of the week

SmartFit™

All your health, fitness and well-being discounts in one place

Get the Smart Spending app



Any questions? Please contact your HR representative

GET SOCIAL @SEVERFIELDPLC SEVERFIELD_PLC LINKEDIN.COM/COMPANY/SEVERFIELD-PLC

FARRINGDON WEST, LONDON



LEAN ON ME

FACT FILE

LOCATION:	London
CLIENT:	HB Reavis
MAIN CONTRACTOR:	HB Reavis
TONNAGE:	1,750
ARCHITECT:	Weedon Architects
ENGINEER:	Buro Happold
SEVERFIELD:	NI

For Severfield (NI), a new London development meant that everyone, and every beam, had to support each other to get the job done.

1 With Crossrail burrowing its way through the capital, above ground is seeing lots of ‘over-site’ development along its route too. One of the biggest new complexes, Farringdon West’s mix of residential and retail rises from the underground station, 40 metres below the busy streets.

The development is immediately adjacent to the newly built Farringdon station, which is the only station where Crossrail, London Underground and Thameslink meet. When the Elizabeth line opens, Farringdon will be one of the busiest stations in the UK.

Here, in the heart of London, any new development is going to come with an extra side order of complexity, as Site Manager Steven Virtue explains: “We’ve needed a lot more coordination with different authorities.



The teamwork with main contractor HB Reavis, plus Crossrail, Transport for London and local authorities has really helped us, so much so that we got ahead of schedule.”

WHAT LIES BENEATH

While, above ground, the teams have been leaning on each other for support – the same could be said below ground too. That’s because, to raise this eight-storey new building into the London skyline, the steel has been directly worked onto the station’s existing columns.

“Our engineers designed bespoke baseplates using a rocker detail to ensure the connections for the new columns transferred no moment into the existing structure,” Project Manager Stephen Lee says, explaining why it was imperative no movement travelled from the new build onto the columns already in place, supporting the station. “There were also some heavy double-web plate girders, which had to be spliced to suit the capacity of the cranes.

WHAT IS MOMENT?

The ‘Moment’ of a force is a measure of its tendency to cause a body to rotate about a specific point or axis

These required a complex set of temporary works supports to allow them to be joined together in situ and welded.” Back above ground, the usual London problems persisted: “It’s very congested up here, with very little lay down space, everything had to be planned for just-in-time deliveries of two loads a day,” says Steven Virtue.

BLOOMING LOVELY

The scheme includes a raised Winter Garden with exotic trees and shrubs and wrap-around balconies. Just two tower cranes were responsible for lifting a full 1,750 tonnes of steelwork, and a further 15,000 square metres of metal decking into place.

Three squads erected the steel, with another on the decking: “With the steel being finished in 2019, we’ll be back in February to finish up.” Steven says.

By then, the site will be yet another impressive addition to the capital, cleverly joining the underground with the city above, in more ways than one!

SEVERFIELD EUROPE

Over in the Netherlands, Severfield Europe started a little over two years ago, with just one man: Director, Gijs Kannekens. Now he heads a team of eight. So it's about time we took a closer look at the exciting things that are happening over there...

MEET
THE
TEAM

I've worked in the steel industry for more than 25 years, on all types of projects around Europe and in the UK,"

Gijs tells *Skyline*.

"The market in Europe is a bit different to the UK, as a lot of principal designs have traditionally been drafted in concrete. But things are changing, and I am convinced that, with the rise of steel, Severfield can be a strong partner for European clients."

Typical projects it's aiming for are warehouses and distribution centres, data centres, railway stations and airport terminals, but also bridges and stadiums.

To that end, Gijs' tight-knit crew consists of estimators, project managers, technical managers, site managers and subcontractor managers, together with a busy office administrator.

"The team has been put together with the aim to manage future European projects and make our move into Europe the huge success I'm confident it will be," Gijs says.

Gijs tells us that working internationally requires a great deal of flexibility as well as the ability to adapt to local requirements and regulations.



Remko Kruithof

THE EUROPEAN TOUR

"Severfield Europe is actively targeting the northern and western part of Europe (Netherlands, Belgium, Germany, Luxembourg, Norway, Sweden, Denmark and Finland)."

"Depending on the type of project we determine, we'll work together with other companies from the Group's UK bases," Gijs says. "I'd like to think we're a very cooperative, positive team. People work better together and a compliment goes further than a shout!"

It's Gijs' healthy network of contacts gleaned from his earlier career that's really helping to get the word out.

"Our ambition is obviously to grow to a mature organisation where we can fully support ourselves. Now that we're actually in business with serious projects, it's an exciting place to work!"

THE PRICE IS RIGHT

For Estimator Remko Kruithof, it's this close collaboration that unites not only his Dutch team, but the wider Severfield family too.

"My main task is estimating for new projects we hope to be awarded, and I do most of the

pricing and bid writing in close collaboration with Gijs," Remko says.

"We'll visit the clients together in the tendering process, and we enjoy a lot of support from the estimating department in Severfield (UK). Depending on the type of project and the capacity, they can work with us on the pricing and then we can jointly decide who will take the lead over projects. Their help is invaluable."

There is also, Remko says, a strong bond between the team and Severfield (Design & Build), and Severfield (NI) parts of the business. "There has been an intensive joining of forces between us," he says. "For a data centre in Finland, we were very close with the client but the estimating was largely done by Severfield (NI)."

Within this small team, there's a sense that, by pulling together, anything is possible: "We're not supposed to solely focus on our job description," Remko explains.

"Here, functions overlap and we have to do all sorts of stuff to make this work."

"I was really excited when I joined Severfield last year," Remko says. "To be working for one of Europe's greatest steel companies was like being with the big boys! And I still experience the excitement in my own estimating work to this day. The enthusiasm from everyone here, to make things work, is just fantastic."

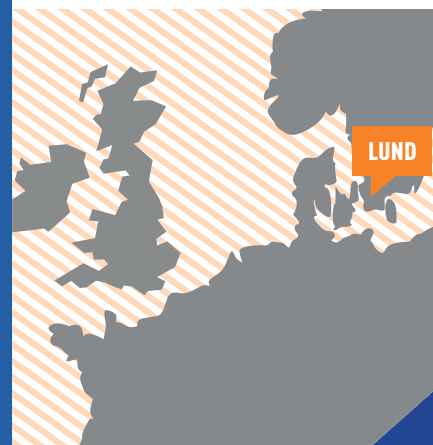
For Severfield Europe, clearly, the best is yet to come.



The cutting edge of big science comes to a little town in Sweden, thanks to the collaborative new ways of working from our Severfield Europe team.

THE SHAPE OF THINGS TO COME

**PROJECT ESS,
SWEDEN**



PROJECT ESS, SWEDEN



A small town with big ideas, Lund sits on the southern tip of Sweden – close to Malmö, the country's third-largest city. Its university is well regarded, but it's the new Spallation Source ERIC (ESS) that's sure to put this pretty Scandinavian town firmly on the map.

When complete in a couple of years' time, it will house the world's most powerful neutron-emitting source, which will help scientists delve into the tiniest particles known to mankind. It's genuinely thrilling stuff that is sure to open up whole new worlds of scientific breakthroughs.

But away from all the head-scratching science, there are some genuinely thrilling things happening on site, too. The construction is the first major win for our Severfield Europe team, as Director, Gijs Kannekens explains:

"This is a prestigious project. We are

certainly in the frame now we're building this in Sweden. The interfaces are very complex, and the saying in Sweden is 'if you can build this, you can build any project here!'"

High praise indeed, from a country known to be forward-thinking and when it comes to design and engineering excellence (and we're not talking Ikea, here).

POWER TO THE PEOPLE

The project consists of seven different buildings; a state-of-the-art cluster of scientific research facilities that will

host the most powerful linear proton accelerator ever built.

"It's a collaboration of 13 European nations, including the UK and the Netherlands," says Gijs of the 3,000-tonne structure.

The complex will house industrial and laboratory buildings, office space, and guest accommodation facilities capable of accommodating up to 3,000 researchers. A world-class research centre with an innovative architectural design, it's as striking externally as it is set to be ground-breaking inside.



FACT FILE

LOCATION:	Lund
CLIENT:	ESS
MAIN CONTRACTOR:	Skanska ESS Construction HB
TONNAGE:	3,000
ARCHITECT:	Henning Larsen
FABRICATION LOCATION:	UK

“It requires some extremely heavy welding, but also precast concrete elements and sandwich and roof cladding. The complexity of the build has called for careful planning of every aspect, planning that has been in the works far longer than we’ve been on site,” Gijs says.

Because of the sensitivity of the equipment inside, we had to take into account extreme loads for wind and seismic activity. The site has been called

“The site has been called a ‘hubble telescope in reverse’.”

GIJS KANNEKENS



‘a Hubble telescope in reverse’. Rather than a powerful instrument reaching out into the far corners of the universe, the ESS is like a giant microscope uncovering the mysteries of the atomic structures that make up everything we see.

“For the structural steel, this resulted in the heavy welding requirements, for instance a crane beam in the High Bay building, built up from 80mm plate!” Gijs reveals.



FIRST BIG WIN

“As this is the first big Severfield Europe project, we were bound to have some challenges along the way. We each have our expertise in steel but we had to adopt Severfield’s procedures and standards.”

“Having our colleagues from the UK on site has really helped us.” The learning curve has been steep, and fast. “The project has very high requirements, and the clients demand a lot from us, so we’ve been learning quickly!” Gijs says.

As we visit, much of the heavy welding is done and erection has started on a number of buildings. In Lund, thanks to the work of Severfield Europe, the future is shaping up nicely.

GOOGLE, LONDON

COMP



UTER SAYS YES

When the world's biggest search engine sets up home, you can be sure of one thing. They're going to want a headquarters that breaks all the rules – and a team capable of stepping up to the challenge.

2 With Coal Drops Yard and R1 King's Cross, we've already played a major part in the redevelopment of that corner of the capital, and the area is looking incredible. If you get the chance to pay a visit, we'd really recommend it.

But is the best yet to come? – It'll certainly be the biggest! The hugely anticipated Google Head Quarters (HQ) will sandwich between London King's Cross railway station and St Pancras Square, with its shops, bars and restaurants. A whopping 330 metres long, the building is known as a 'landscaper'. And, if it stood up to become a skyscraper, it would tower a full 20 metres above The Shard, and 50 metres above TwentyTwo Bishopsgate (both of which are also beautiful examples of our amazing work!).

Ranging from between 30 and 60 metres wide, the HQ will require around 15,500 tonnes of permanent steel and a further 1,600 tonnes of temporary steel.

"This is a very challenging project for all the Severfield teams, both on-site and up at head office," says Site Manager Mick Reilly. "It's a real head-scratcher, to be honest!"

SPACE INVADERS

With its proposed open, light-filled design, the building requires a huge amount of temporary works to support the growing structure. "The building sits on temporary work frames running north to south, which all have to be jacked when the roof trusses are built," says Mick. "As both sides of the buildings are supported by the roof trusses, this all has to be stripped out when the building is being finished."

Also, due to the design, our site crew only have limited set-up points for the deck riders, so access is a big challenge and, due to the flooring sitting in the bottom flange, all the steel has to be landed in what's known as shakeout, or temporary holding platforms.

"It's very challenging having to work with other suppliers too," says Mick. "The project is split into five phases and we're working on phase one, two and three with core four to start soon. We've also had to factor in late design changes."

WORKING TOGETHER

Collaboration is critical. "It's a fine line between having to send loads away due to site congestion and running out of materials, as the shakeouts only hold 20 tonnes of steel," Mick says. "Added to this, we're landing concrete slabs for Expanded, CLT timber units for BKS and Amber Kelly riser safe units. So, we're not only dealing with Severfield loads, but three other suppliers' loads as well, in a very busy central London location."

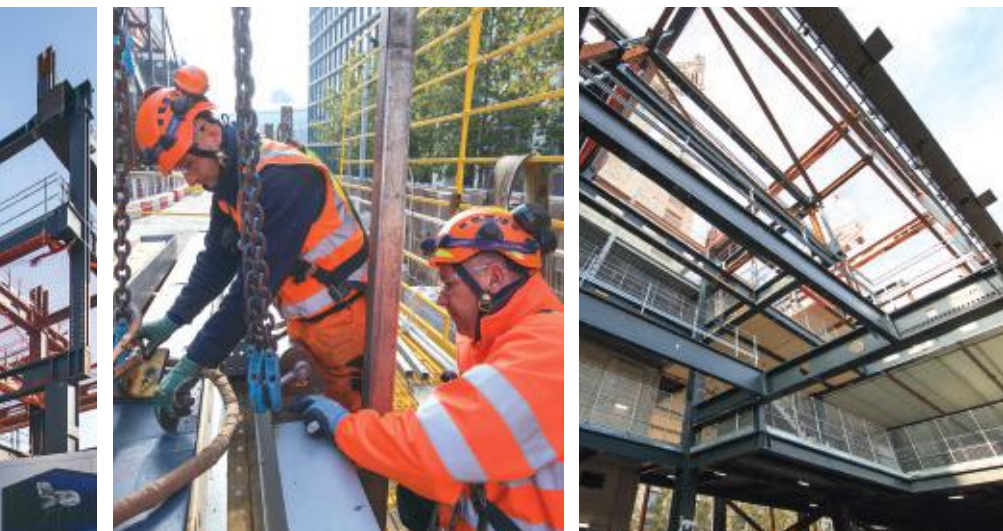
Each phase also has to allow for three different types of flooring, with installation having to be coordinated into the main steel build. "The concrete and timber floor panels are on show from the bottom so they all sit on the bottom flange," Mick explains. "This does make access across site a bit tricky. To work around it we've purchased a number of steps to move about the site easier."

Despite all that, Mick admits that the job is a fascinating project to be involved with. "It's never boring here!" he laughs.

"The Severfield team for this project is hugely experienced, with a great skill set, and has worked on a number of projects together – I think that really helps with something as complex as this."

FACTFILE

LOCATION:	London
CLIENT:	Google
MAIN CONTRACTOR:	Lendlease
TONNAGE:	15,500
ARCHITECT:	Thomas Heatherwick
SEVERFIELD:	UK



QUARTER CENTURY

PAUL SPENCE, MACHINE OPERATOR

"Everything's computerised now. That's the main difference I've seen in the past 25 years. I've always loved steel. I left school on Wednesday and started work the following Monday. I had a go at being a mechanic, but it wasn't for me. I love working in the Bits Shop – without our plates, the lines stop working. We've had some changes over the years, and we moved around a bit until we got our custom-built facility. We used to put flat bars through, cut the ends off with oxyacetylene, stack 'em up and cut 'em off, all day. We've been through three different computer programme systems since the old days. We're always learning, but I've been on machines all my life, so it's all second nature to me now. Yes, I miss the banter now things are more automated, but I wouldn't swap it for the way things used to be. When I started, no one talked about safety – now it's spot on.

Sometimes there's pressure with the job. When we were working on Terminal Five for Heathrow it was all hands on deck, but it's a great company. They look after you. You have a laugh."

FRED ROBSON, TEAM LEADER, FABSEC

"My cousin got me in. Back then, if you wanted to leave nights, you could get someone in to fill your role. So, that was me – on nights for 16 years! Then, when the company made a few changes, I moved onto days. At first it was hard to adjust, but eventually I was totally converted – I much prefer days. As Team Leader I oversee the line, but I'm still very much hands on.

If I go home dirty, I know I've done a good day's work.

"I've had some scrapes in my time though – losing a big toe when a beam overbalanced, and getting a skin graft after a welding splatter – but I'm a glass half full person, and the company looked after me.

"It's a brilliant place to work. I never get bored; you can't in Fabsec, because nothing behaves like it should – we're always pushing the technology to the max – especially now with the Google job. It keeps your mind active. I'm proud of what we've done, and I'm proud of my crew. If I didn't enjoy it, I wouldn't be here 10 hours a day!"

– NOT OUT!

Congratulations are in order for three of our colleagues celebrating 25 years with us at Dalton. So, what's their long-service secret, we wondered?

ANDREW CARR, PLATER

"I've spent half my life here, so I must enjoy it! I was 25 when I started, after a spell in a company in my home town of Northallerton. I saw the advert for platers, and applied. Twenty-five years later I'm still here, on Line 4. Although, some things do change – I got married recently.

I still love the job even now. What I love is seeing the end result of the work I do, whether that's The Shard or even if it's Darlington Football Club's ground, they all make me proud.

I tend not to be a worrier. I give each day my best and I don't stress out – that's what my supervisors are for! If there's a problem, I just talk to them. But you're only capable of doing what you can. So you get your head down, look at what you've got to do, and get on with it. If I achieve what I set out to do, that's a good day. And if I can help out any of the young ones on the way, I'm happy with that."

POWERING UP

We're incredibly proud to announce a recent acquisition to the Severfield family of companies - and one with a hugely well-regarded pedigree. Welcome to Harry Peers & Co.



It's fantastic news to announce that Bolton-based Harry Peers, a leading structural steelwork and engineering business with a proud history spanning back more than 80 years, is now a part of our team.

Around 20 years ago, the family-run business made a pivotal and forward-thinking change of direction: focusing on the nuclear, process industries, defence and power generation sectors.

Now the business is well respected for its expertise in the construction and decommissioning of nuclear plants, in creating efficient new power stations, and ground-breaking new pharmaceutical campus buildings.

"It's a marketplace that Severfield hasn't had much standing in, in the past, and it will definitely broaden its horizons," says Harry Peers' Commercial Manager Allister Taylor. "Plus, Severfield is helping us increase our capacity too, which opens up new doors for us. So it's an exciting time all round."



Allister Taylor

POWERING THE FUTURE

The UK government is committed to increase energy consumption from renewable sources. That means one thing: a need for many more next-generation power stations.

"These are all jobs where there is ring-fenced money available to make them happen," says Design and Sales Manager Chris Achilles. "Which is why we decided to focus on procuring work that was higher up the food chain, projects that simply

have to be done, such as decommissioning nuclear power stations."

With that decision came a massive investment in quality systems and training:

"You can't just walk into these markets without the necessary accreditations," says Allister.

With that hard work – and reputation – secured, including a prestigious Fit4Nuclear

accreditation (alone amongst their competitors) the team is now boosted by Severfield's increased production capacities.

"A 3,500-tonne job is a big result for us, but a small one for Severfield," says Chris. "So now we can start looking at 5,000-tonne jobs, with help from Severfield when we need extra capacity to get the job done. It's a win-win."

The desire to find carbon fuel alternatives also means the power generation market, including energy-from-waste plants such as Ferrybridge that Peers completed a year or so ago, is forecasting enormous growth.

Allister's already been chatting to existing clients, following the news of the acquisition: "We've had nothing but positive feedback," he says. "With us, it's always been about the quality of the work we do. When you work in our sectors, it's everything. The Severfield name can only reinforce that reputation."



Chris Achilles

SEVERFIELD SAFETY FIRST AWARDS 2019

Severfield pays tribute to the people who've gone above and beyond to keep our factories and our sites safe and secure places to work. Congratulations to all the nominees and winners.

The idea was simple – we couldn't be prouder when our teams receive safety awards from external clients and contractors. So why don't we celebrate our achievements ourselves?

The result – the launch of our Safety First Awards at York's Grand Hotel: "So much good is happening from a safety point of view, we needed to say thank you in a formal way," explains the award's instigator, Phillipa Recchia, SHE Director.

"It's about saying a personal thank you from the company, because it really is these people who make all the difference.



Phillipa Recchia

"We received a lot of strong nominations, over a hundred, way more than we expected for the first event," says Sara Halliday, SHE Sustainability Coordinator.

"This is the start of the story," says Ian Cochrane, Chief Operating Officer. "What's important is how these fantastic winners inspire a network of their colleagues, and become ambassadors for our health and safety culture."

To really show how much health and safety means – to all of us – we rely on your nominations, when they're called for, for next year's awards ceremony. You never know – it could be you!



Ian Cochrane

"So much good is happening from a safety point of view, we needed to say thank you in a formal way."

PHILLIPA RECCHIA



SUBCONTRACTOR TEAM

Severfield (UK)/Severfield (NI) Construction – Colin Hanna CM Structural

“I’m so proud of the lads. I didn’t think we’d win, but it’s been a fantastic night. It’s good to get out there and meet people you’ve spoken to on the phone who you’ve never met. Severfield takes safety very seriously.”



CONSTRUCTION TEAM

Severfield (NI) – CLN3 Dublin – Gareth Liggett, Liam Burns and Michael Moore

“It felt great. I didn’t think we’d win, but I’m naturally competitive, so it’s fantastic that we did!”



AND THE WINNER IS...



FACTORY TEAM

Severfield (UK) Lostock –
 Andy Smedley, Chris Coyne,
 Jack Bracegirdle,
 Gavin Pettigrew, Reece Roberts
 and the Bay 4 Team

“Winning shows that the whole business recognises what we’ve achieved at Lostock, and we feel proud. The night is a fabulous addition to the company, people coming together as a whole, recognising the strides we’ve made.”



INNOVATION

Severfield (Design & Build)
 Construction – Simon Welbourn

“It feels excellent to be part of the winning team. Part of one big team. The night is special because these awards mean so much to everyone.”





★ **OUTSTANDING ACHIEVEMENT**

Severfield (UK) Dalton – Fred Robson

“It felt odd. Safety is just part of my everyday job. But it makes me proud. It shows that what we do counts, it’s a really positive step forward.”



ONE TO WATCH

Severfield (UK) Lostock – James O’Connor

“It felt good, considering the people I was up against from UK and NI, to have good reports from others felt great, being so young into the business.”



★ **WILDCARD**

TwentyTwo Bishopsgate Video Severfield (UK) Construction & Design - Grant Short, Mick Reilly, Paul Roddy, Paul Wake, Trevor Costello, Bryan Milne and David Kidd

“It was a total surprise to be nominated, and a great honour. The main thing is that it’s brought everyone together. We’ve always had pride in our work, but it proves that we were right!”



Email communications@severfield.com if you'd like a link to the photos

FORWARD >>>> MOTION

Why a four-month course has made one of our brightest rising stars shine even brighter.

Madeleine Hickey's career is definitely moving in the right direction: forward. As our only female Quantity Surveyor at Dalton, Madeleine's halfway through her master's degree, and has her sights set on training for Chartered status after that.

Now Maddy can chalk up another accolade, she was shortlisted for a prestigious 'Emerging Leader' award, following her successful completion of the Forward Ladies Inspired Leadership Programme.

Over four months, Maddy and her fellow course members completed a series of modules aimed at empowering women in business to reach their full potential.

MOVING ON UP

The programme has seen thousands of women achieve their individual aspirations over the last 20 years, and it brings much-needed diversity in leadership to the wider business community.

With a day's secondment every month, over four months Maddy was able to not

only complete the course, but transform her approach to her career, and her ways of working.

"I'm so glad I was given the opportunity to do this," she says. "The course has really changed my perspective on so many aspects of my profession. Severfield has always been a supportive environment but, as the only woman in my team, that does come with challenges."

MEETING OF MINDS

Maddy says the course helped her think more about the impact she has on others, to focus on building her 'brand', or the qualities she wants to project, and on setting goals. "It's obvious that in male-dominated industries, the leadership team is mostly men. The course helps us come up with ways to make ourselves seen and heard more," Maddy says.

Asked what advice she'd pass on to others, Maddy has no hesitation. "If opportunities like this do come up, don't doubt yourself or your ability to do it. Say yes!"



THREE WAYS FORWARD

Griselda Togobo runs the Forward Ladies course. Here are her tips for all women in business.

Speak Up. Be Visible

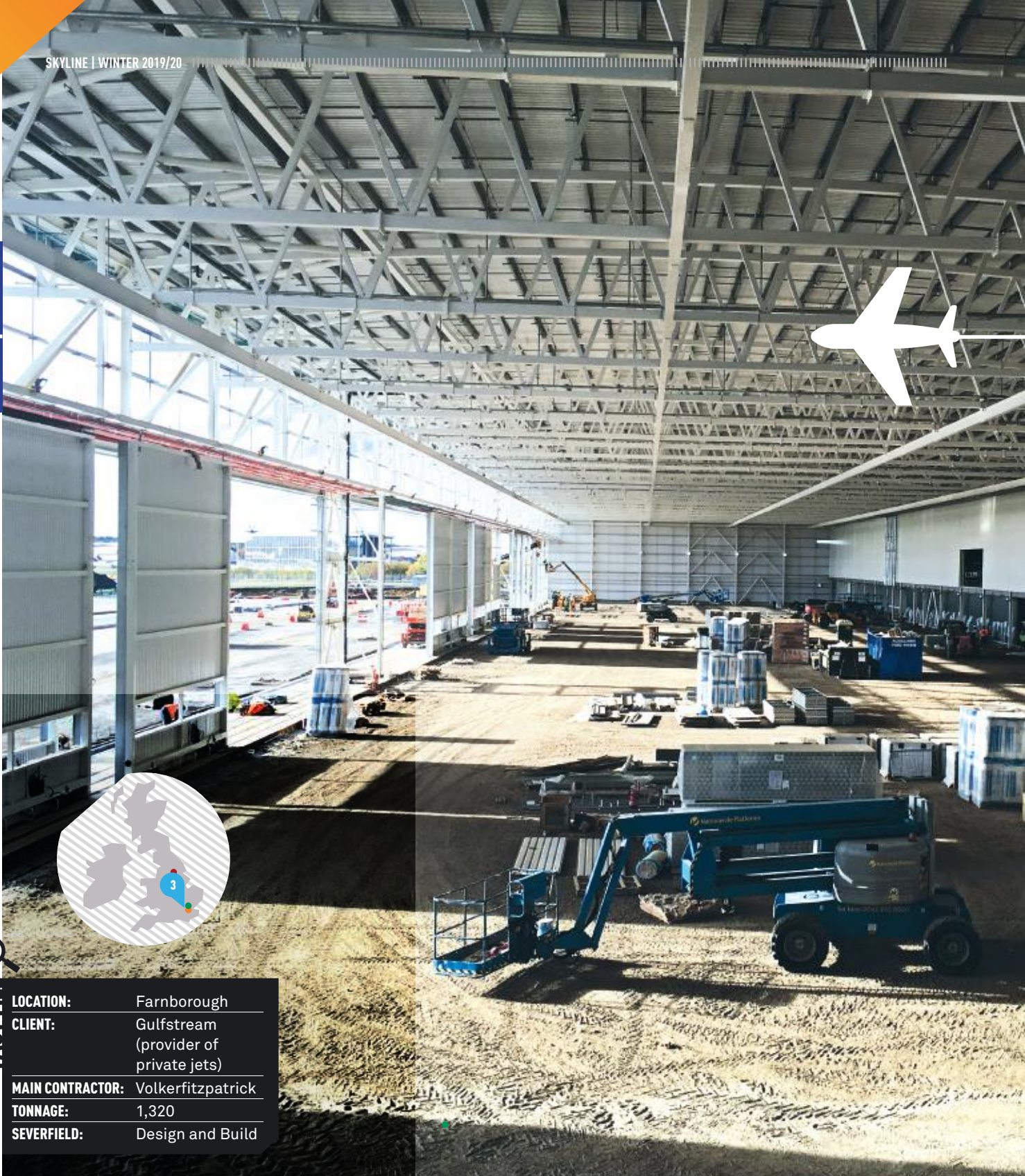
Know your craft and do your best work. Seize every opportunity to present your own work! Make it known that you are ready and available for new opportunities.

Embrace New Challenges

Playing it safe can only take you so far. Embrace every opportunity to step out of your comfort zone. Take some calculated risks. You learn the most from new and challenging experiences.

Invest in Relationships

Most of the decisions affecting your career are made by people behind closed doors. You need to have people championing you if you want to keep progressing. Make the time to invest in the relationships around you.



FACTFILE

LOCATION: Farnborough
CLIENT: Gulfstream (provider of private jets)
MAIN CONTRACTOR: Volkerfitzpatrick
TONNAGE: 1,320
SEVERFIELD: Design and Build



GULFSTREAM, FARNBOROUGH

FLIGHT PLAN

Building a striking new hangar for one of the best-known aerospace manufacturers is no ordinary day in the office but, for Severfield (Design & Build), the project took the team to new heights.

3 It's the name behind the world's most prestigious private jets. So, they're going to want somewhere very special to keep their fleet gleaming. For Gulfstream's new maintenance, repair and overhaul (MRO) facility, they set their standards sky-high.

Enter Severfield (Design & Build), who was tasked with building Gulfstream's huge new hangar at its Hampshire base, just south of London.

The new 20,444-square-metre facility at TAG Farnborough Airport is due to open this winter. It will serve as Gulfstream's main resource for high-flying business customers in the London area, which is Europe's busiest business aviation hub.

"We started six months ago," says Senior Site Supervisor Paul Wilson, whose job it is to ensure the project runs as smoothly as a Gulfstream G700, ensuring that the steel arrives on time, and the steel erection schedule goes to plan.

OPEN FOR BUSINESS

"Unlike portal frames, which are square, this is a curved roof, with huge doors in the front to get the planes through," says Paul.

"With a portal shed you only have rafters, whereas this build required trusses, four in one bay, to which the doors are attached. When we put the trusses up, they had to be made on the floor and raised into place by two 500-tonne cranes as a tandem lift."

Two cranes lifting four curved trusses that had been bolted together on the floor made for a very delicate procedure: "Everything about this job is different: different lifting plans, different cranes, different materials.

The doors, too, were different. "They're mega-doors," says Project Manager, George Bloom "Three 70-metre-long structures were lifted onto temporary towers, and we got them within the tight levels of tolerance the job required."

HIGH AND MIGHTY

"The 70-metre span is one huge truss, which required the two cranes, and complex temporary works," Paul says. "We used a prop in the middle of the door span with bracings coming off the middle to hold it up until we got the main trusses up in the shed."

The hangar building itself is 236 metres long with 40-metre welded-up roof trusses, and four full-length gantry

crane beams supported from the roof trusses.

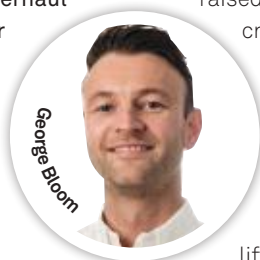
And all of this was erected on a working airport, which required plenty of assistance from air traffic control. "Every day we'd ring the airport up and ask what planes were landing, and where. When they were flying east, towards us, we had to down tools initially, but eventually, the planes had to make way for us!" Paul says.

And when those planes have included royalty and A-list celebs with their scheduled-to-the-minute diaries, that's quite an achievement!

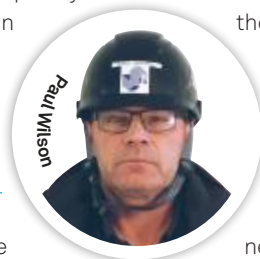
"They wouldn't let us boom up our cranes when planes were landing from certain directions," George adds.

"We didn't find out about this until the day we started on-site, so you can imagine how difficult that was to work around. We had to work nights for a short while, until air traffic control redirected the flight paths to a neighbouring airport."

Despite the setbacks and the unique circumstances, the team was faced with, the 11-week steel erection programme, temporary works and just-in-time deliveries were carried out with the split-second precision of a Red Arrows display. Appropriate, really – as Farnborough is the acrobatic display team's home too!



George Bloom



Paul Wilson

AMAZON, DONCASTER

APPRIME

When the going gets tough, the Severfield (Design & Build) crew gets to work on what it does best: teamwork.

4 Being good can have its drawbacks. Setting the benchmark so high can mean that, next time, you're going to have to set it even higher. Not that that's a problem for the Severfield (Design & Build) team. Because with every new mega warehouse, they just keep on getting bigger and better. And the clients? They expect nothing but the best with every new project. Or, possibly, something just a little bit greater.

Take Amazon's huge new Doncaster warehouse. On the surface, it might just look like any other normal portal-framed monster. (just don't say that too loudly to the team over in design), but there's much more to it than meets the eye.

"I've been involved in some challenging projects, and this was definitely one of the trickiest ones," says Jonny Charles, Project Technician.

Plant deck frames are designed to house air conditioning units on warehouse roofs. A couple is common. A handful isn't unheard of. But 29? That's a whole new world of learning experience!

Project Manager Dominic Coates says they didn't let it beat them, "Building the roof so that it could take such a large load imposed by the plant platform was by far the biggest challenge of the job. But it was a challenge the design team, led by Dan Dockerty, achieved well."

A NEW SUMMIT

But the success only came after a learning curve so steep it was almost vertical.

"There's only so many times you can be tasked with a job and be fooled by the words, 'It's quite a nice shed actually.' Unfortunately for me, this was the one!" says Jonny.

"Thanks to the late appointment of follow-on trades, the job was hit by lots of variations," adds Dominic, pointing out a list of more than 40 changes. "On a spec build that's quite excessive," he admits.

"This has put a lot of pressure on the design and detailing team, so credit to Jonny and Detailer Laura Speakman, and the rest of the team for getting this project over the line, despite all these setbacks."





EXAMPLE

MISSION ACCOMPLISHED

Jonny admits, "I'd spend days setting out steel, only for a revised set of drawings to come through right at the last minute and I'd have to start all over again. It was relentless. This isn't uncommon in projects, but with so much needing coordinating at the same time, it made this one especially tricky. I was looking forward to my strategically booked holiday!"

Thankfully, the 385-metre-long warehouse, its 170-metre-wide office, two office hubs, stair towers and cluster of ancillary buildings came good. Of course it did!

"Huge credit is also due to Tim Hayward, Site Manager," adds Dominic. "His work ethic and attitude are a testament to Severfield's company values."

All of this makes you wonder: what mountain will the Design & Build team climb next time?

Whatever it is, Dominic isn't overly worried, "At Severfield (Design & Build) we're prepared and equipped to deal with the situation to get the job done."



FACTFILE

LOCATION:	Doncaster
CLIENT:	Amazon
MAIN CONTRACTOR:	Buckingham Group
TONNAGE:	2,500
SEVERFIELD:	Design & Build





MAKE THE CONNECTION

Where would we be without social media? While there's no doubt it can be a great way to keep in touch with friends and family, nothing beats the real thing...

Do you ever find yourself snapping back to attention and realising that you've just spent an hour scrolling through Twitter, Facebook or Instagram?

Or maybe it's the opposite – a feeling of anxiety and fear of missing out when you've not looked at your phone for a while?

Then, once you've checked all your feeds, hands up who feels even more disconnected and dissatisfied? Let's be honest – who wonders whether the social

media we use has got us in the palm of its hand, rather than the other way round?

Social media can be great, helping us to feel more connected to those far away. But with studies showing a possible connection between social media and depression or anxiety, finding a balance between logging in and switching off really can have a positive impact on our mental health.



Here are just six common-sense tips to help you have a happy and healthy relationship with Facebook and co, and be way more social!

REMEMBER REAL LIFE IS UNFILTERED



The lives, holidays and homes we see on screens are just carefully framed versions of the beautiful parts of our complicated lives. What you don't see is the hundreds of other photos with the messy stuff still in shot! View others' pictures as inspiration, not comparison. They're probably struggling with the same stuff that you are.

ENGAGE WITH AN OPEN HEART



Before you log on, check how you're feeling. Chances are that'll colour how you react to others' posts. Ask yourself: "If a million people saw this, would it make the world a better place?"

AVOID BINGE BROWSING



Set yourself a time limit, or decide what you want to log on for. Remember your purpose and stick to it! Killing ten minutes waiting for the train is fine, but why not read a book?

DON'T MAKE IT A SUBSTITUTE FOR CONNECTION



If you're feeling glum, or lonely, consider other options. Go for a walk, call a friend, arrange to meet for a coffee with a friend.

THINK OF OTHERS



Don't be 'that person'. The one clicking away on their phone when they're with friends at a bar. These are the precious times. No tweet beats really being there.

TALK FACE TO FACE



Always remember, nothing beats the genuine connection of a one-to-one chat with a real human! No iPhone, FaceTime or WhatsApp session can ever beat the real thing.



STEEL STORIES



Meet our Group HR Director, **Carolyn Hobdey** – but don't wait too long, or she'll be off dancing, running, boxing or singing...

TELL US ABOUT WHAT YOU WERE LIKE AS A CHILD

I liked to entertain! I'd do impersonations of the other kids and teachers at school. This led me to doing lots of singing and acting at school and university. I still sing today in a choir in Harrogate.

WHY HR – WHAT IS IT THAT ATTRACTED YOU?

I fell into HR by accident, but wanting to make the world of work better for people is what keeps me here. I've had some really bad experiences – and some really great ones – during my career and I want to ensure that work is a positive environment for people. Let's face it, we spend so much of our time here!

YOU'VE WORKED ACROSS DIFFERENT INDUSTRIES, INCLUDING RETAIL GIANT WALMART, BUT WHAT UNITES THEM?

The people. Always. It doesn't matter where you go in the world or into what industry, people are people; they're the heart of any business.

"It's a business with great potential so I joined for the opportunity to be part of helping it to realise that."

CAROLYN HOBDEY

WHAT HAVE BEEN SOME OF THE EXPERIENCES THAT STAND OUT?

There are so many! I've dealt with some really devastating situations – terminal illness, suicide, assaults, even a murder. Nothing prepares you for some of those, so I had to grow up fast. The chance to walk beside some incredible people dealing with life's toughest challenges has been a privilege. Good people practices can really make a difference in situations like those.

WHAT'S THE BEST ADVICE YOU'VE EVER BEEN GIVEN?

Know who you are and stand up for that.

I've left jobs because the business behaviours were at odds with my values; it would have killed me to do otherwise. My personal mantra though is: Don't die with the music inside. Life is short and precious; you have to make the most of the time you have.

WHY CHOOSE SEVERFIELD?

It's a business with great potential so I joined for the opportunity to be part of helping it to realise that. To do that it needs to continue to change and evolve and I love that stuff!

WHAT DRIVES AND MOTIVATES YOU?

Solving stuff. Making things better. Continuous improvement of myself, others and the environment around us. At the risk of sounding a bit 'Miss World' (I wish!), I really like to help people!

HOW DO YOU DEAL WITH STRESS?

I've had quite a bit of trauma in my life, so I know I have huge amounts of resilience, but I work daily on maintaining my mental health; it's a conscious effort and I attend to it seriously. The physical activity is a really significant part of that and is increasingly important to me, but I also write a daily gratitude journal – don't knock it until you've tried it. And laughter is also very important!

WHAT ABOUT YOUR LIFE OUTSIDE WORK - YOU'RE VERY ACTIVE?

Haha! Yes! I dance (Latin and ballroom), I box (proper boxing with a boxing trainer and a mouth guard and everything!). I do some mixed martial arts. I sing in a choir and I sometimes do yoga if I can find time! Oh, and I've just started running to improve my cardio fitness.



SHOW YOUR SUPPORT

Your donations are always welcome but, if you can, there's something even more valuable you can offer the Alzheimer's Society: your time.



THREE REASONS TO JOIN THE THOUSANDS OF VOLUNTEERS UNITING AGAINST DEMENTIA:

- It doesn't matter how long you devote to volunteering. The time you give as a volunteer makes a direct and meaningful difference for people affected by dementia.
- You'll meet like-minded people, passionate about creating a world without dementia.
- You can use your existing skills and develop new ones.

We're immensely proud of The Severfield Foundation's partnership with Alzheimer's Society. The money we raise is vitally important to the work they do in supporting those affected by dementia in its many forms.

But perhaps more important than the money is our shared ambition to raise awareness of the condition, and the many ways we can all help. And it starts with volunteering. Too many people face dementia alone. With your help, we can change this.

"Volunteers are so important: we can't do what we do without their amazing support," says Alzheimer's Society's Natasha Patel.

"There are lots of volunteer roles available to choose from. No matter how much time you can give or where you're based, there will be something to suit you.

"Whether you volunteer for a day at one of our events or choose a longer-term volunteering opportunity, you will be making a difference for people affected by dementia."

TO FIND OUT MORE

For Alzheimer's Society volunteering roles visit bit.ly/alzheimers-get-involved or contact your Alzheimer's Society Account Manager Natasha Patel, Natasha.patel@alzheimers.org.uk



BY VOLUNTEERING

WHAT CAN YOU DO?

“You don’t need experience to volunteer for most of our opportunities,” says Natasha. For example, we need volunteers who will cheer on our runners taking on challenge events, or volunteers to support us during Memory Walk season, supporting the running of the day and assisting at our sales and information stands.

“We provide two days of training for our Side by Side service.”

This groundbreaking initiative helps people with dementia to keep doing the things they love as well as give new things a go. From going to the football to catching the latest movie, activities help them to lead an independent life.

As a volunteer, you’re matched with someone with shared interests – maybe a love of gardening, or a passion for the cinema – and you share that pastime; going to wherever your fancy takes you. It’s a little thing that really could make all the difference to someone with dementia.

You’ll be given full support and training, and the rewards are incredible. For everyone. “Side by Side works both



ways – you learn from each other and you’ll both be making a big difference to each other’s lives,” says Natasha.

As a volunteer, you could also help by raising awareness, to make sure the real needs and concerns of people with dementia and their cares are addressed.

“Dementia is the UK’s biggest killer and there are 850,000 people with dementia in the UK. This number is going to rise to over one million by 2025. This is why we need your help creating a society that’s both dementia aware and



dementia friendly,” says Natasha.

“Our dementia-friendly communities programme supports anyone who wants to make their workplace, or neighbourhood, a space where people with dementia are understood, respected and supported.”

OVER TO YOU

Congratulations to Kate Starkie, Severfield (Design & Build) Finance Director, who’s just plunged headlong into her first-ever sky dive for Alzheimer’s Society: “This was the most amazing and terrifying experience,” she says. “Thanks to everyone who sponsored us, we’re delighted to have raised £1,200 for Alzheimer’s Society!”

SHOUT OUT TO MOLLY WHITE WHO ALSO COMPLETED AN AMAZING SKY DIVE!

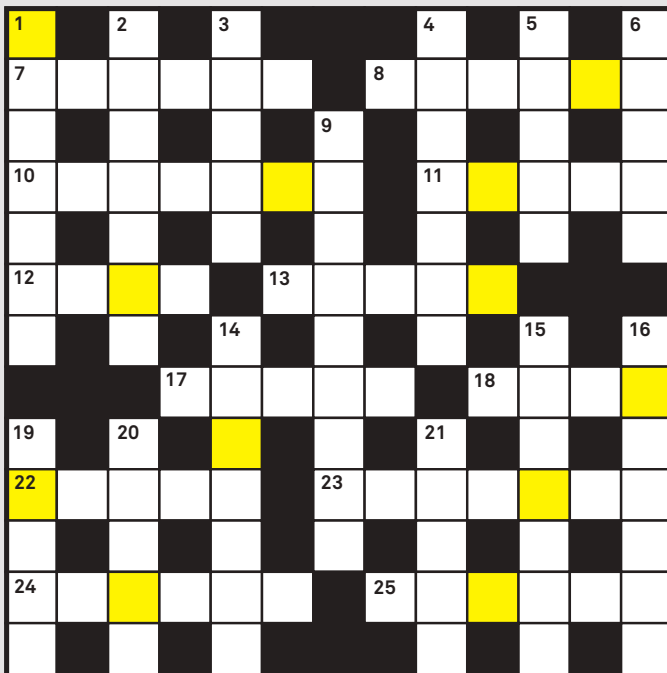


TAKE

WIN! THERE ARE 5 AMAZON ECHO DOTS TO WIN!



Fill in all of your answers then rearrange the letters that are highlighted in yellow to solve the codeword – it could be anything linked to Severfield. Send your full name to communications@severfield.com with the subject 'Amazon!'. Five lucky winners will be picked at random and will each get an Amazon Echo Dot. Closing Date is 2 March 2020.



ACROSS

7. Slender piece of polished metal used in sewing (6)
8. Round root vegetable with white or cream flesh (6)
10. Rafael Nadal was born on this Spanish island (7)
11. Semi-aquatic, fish-eating mammal (5)
12. Roman emperor known for his cruelty (4)
13. Speed at which a piece of music should be played (5)
17. Classic Disney movie about a deer (5)
18. Garment worn by women in Asia (4)
22. Main artery of the body (5)
23. US city known as 'the Big Apple' (3,4)
24. Longest river in Great Britain (6)
25. Paul McCartney's songwriting partner in The Beatles (6)

DOWN

1. Plant of the buttercup family with brightly coloured flowers (7)
2. Offence of wilfully telling an untruth under oath (7)
3. Sudden, brief burst of bright flame (5)
4. Santa Claus's red-nosed reindeer (7)
5. Harmony and togetherness (5)
6. Nickname of the football club now managed by Jose Mourinho (5)
9. Character played in films by Daniel Craig (5,4)
14. Soldiers on horseback (7)
15. Singer whose 2019 album is 'Madame X' (7)
16. Author of 'A Christmas Carol' (7)
19. Very lightweight timber (5)
20. Sauce accompanying meat (5)
21. Person who cleans chimneys (5)

BRAIN POWER

In this quiz, the last letter of an answer is also the first letter of the next answer

1. Who is the patron saint of Venice? (4)
2. Which Branagh plays Royal Navy Commander Bolton in the movie 'Dunkirk'? (7)
3. Which novelist's 2019 novel is 'The Second Sleep'? (6)
4. What is a tool with a shaped opening for turning a nut or a bolt? (7)
5. Which Keith is a guitarist in the Rolling Stones? (8)
6. Which country has Khartoum as its capital city? (5)
7. What is a derogatory term for an old horse? (3)
8. Which German brothers are famous for their anthology of fairy tales? (5)
9. What is the fourth planet from the sun? (4)
10. What is a Middle Eastern sabre with a curved blade? (8)
11. What is a period of strict fasting in the Muslim year? (7)
12. How many lives is a cat traditionally meant to have? (4)
13. What is a fast-moving train? (7)
14. What is highly-seasoned Italian sausage? (6)
15. Which country had Saddam Hussein as its ruler for many years? (4)
16. What is each of the four quarters of a circle? (8)
17. Which actor played Doctor Who from 2005 to 2010? (7)
18. '_____ Island', a classic novel by Robert Louis Stevenson. (8)
19. What country in the Horn of Africa is the continent's second most populous country? (8)
20. Which pop group's debut album was called 'Ring Ring'? (4)
21. What is the long, soft hair of a goat? (6)
22. What is a deep, seemingly bottomless chasm? (5)
23. Which Adam's films include 'Happy Gilmore' and 'Punch-Drunk Love'? (7)
24. What is an exhibition or contest where cowboys show their skills? (5)
25. What is a procedure carried out in a hospital theatre? (9)

WINNERS' CORNER

CONGRATULATIONS

Congratulations to last issue's winners. Each will receive a Google home mini.

- Jenny Knox
- Anthea Williamson
- Lee Walton
- Alistair Burnett
- Andrew Watkin
- Catherine Bell



YOUR SHOUT OUTS

Work colleague gone over and above? Client made you smile?

Want to say thanks to someone who's gone the extra mile? If someone's made your day, we want to hear about it – and here's your chance to pay it back.

THE LONGEST TEMP IN HISTORY?

Wayne Barron, Production Director and Ernie Kirby (Peter's line manager) say Peter Coyne, Fitting Shop Manager has been 'generating first class fittings for his entire 25 years' service' – not bad for someone who was taken on 25 years ago as a temp to cover someone who was on sickness leave! Even better? Peter says he still loves his job. Congratulations Pete!



FROM WAYNE BARRON AND ERNIE KIRBY, PRODUCTION MANAGEMENT

Massive thank you to Neil Almack for bringing our attention to this old picture of one of the original founders of Severfield, John Severs, with his son Peter, collecting his new pride and joy. The picture was taken outside the Grove-Coles Factory in Sunderland on the bank of the River Wear some time in the early 80s. Neil stated, "as long as this crane stays on site, the company will continue to thrive" and as it stands the crane is still to be found in the stockyard of our Dalton site.



FROM CHARLIE JOY, MARKETING & COMMUNICATIONS

Send your shout outs to communications@severfield.com and you could feature in the next issue

WHERE DO YOU READ YOURS?

We're on the lookout for new submissions for Where Do You Read Yours – so come on, send us your those photos of your travels with your favourite mag!

THE MAN BEHIND SKYLINE!

In the meantime, David Lloyd, Skyline's writer, sent in a shot of his visit to the wonderful Severfield (NI)-built V&A Dundee.



DID YOU KNOW?



If stood on its end, the Google 'landscaper' at King's Cross would be **30 METRES TALLER**

than The Shard, making it the highest building in Europe!

See page 8

Our first-ever annual Safety First Awards received over

100 NOMINATIONS

– but only the best of the best could win!

See page 13



Farnborough Airport, where we're building the new Gulfstream maintenance hub, was

THE FIRST OPERATIONAL AIRFIELD IN THE UK

established in 1905.

See page 18

SHOT of the season

On site, with your team, or a spectacular sight on the way to work – we want to know what your Severfield looks like.



How's this for a commute into work.

Rush hour? What rush hour. Thanks to Rick Butler for his amazing shot of his bike ride-route in to Lostock on a cold and frosty morning.

They call it the Cheese Grater...

... but it's officially the Leadenhall Building, and it makes for a terrific view from our site at 80 Fenchurch Street, framed by 22 Bishopgate in the background too! Thanks Steve Dobbs for this toweringly impressive shot!



What's *your* shot of the season?

WE'D LIKE TO SEE MORE OF YOUR PHOTOS – PAST AND PRESENT – IN SKYLINE. IF YOU'VE GOT A PICTURE YOU'D LIKE US TO CONSIDER FOR SHOT OF THE SEASON, SEND IT TO US AT: communications@severfield.com FOR CONSIDERATION AND IT COULD FEATURE IN OUR NEXT ISSUE.

WANT TO FEATURE YOU AND YOUR TEAM IN THE NEXT ISSUE?

If you've got a story about the work you and your team are doing, or want to be a Guest Editor, project photographer or be involved in any way, please get in touch! Email communications@severfield.com

 Severfield

WINTER 2019/20