



VEHICLE INSPECTION
AND WORKSHOP EQUIPMENT



2026 Catalog

INTERNATIONAL 

EMISSIONS

LIGHTING

GROUND

Capelec SAS
1130 rue des Marels Parc Euréka
34000 Montpellier FRANCE
+33 (0)4 67 156 156
contact@capelec.com

Capelec Deutschland GmbH
Gewerbstraße 8
87787 Wolfertschwenden ALLEMAGNE
(+49) 08334/98 95 323
capelec.deutschland@capelec.de

Capelec India PVT. Ltd.
Mez & 1st Floor, A-83,
Okhla Industrial Area, Ph-II,
New Delhi - 110020 INDE
+91-9654117338
capelec.india@capelec.com

 www.capelec.com





DEVELOPMENT

1980

Founding of the family business

In the 80s, CAPELEC produced piezo sensors, and within a few years became the French leader in MOT/PTI equipment.

Innovations and range expansion

Launch of the new-generation CAP3600 gas analyzer. New series of heavy-vehicle alignment testers.

Creation of German and Indian subsidiaries

In full expansion on European markets, CAPELEC asserts its commitment to internationalization and opens its subsidiaries CAPELEC Deutschland GmbH and CAPELEC India PVT. Ltd.

From emissions monitoring to air quality

Through the acquisition of Pegasor Oy, a Finnish specialist in nanoparticle measurement, CAPELEC is moving into the technologies of the future and opening up its fields of application.

New range for two-wheelers Smart Control headlight tester

New generation of ergonomic headlight tester.

Launch of testers dedicated to category L control.

2025

INNOVATION AND ANTICIPATION

For over 30 years, Capelec has been providing mobility professionals with high-performance, innovative equipment and software.

The company anticipates change, imagines and designs avant-garde solutions, and puts its expertise at the service of future technologies.

It supplies equipment and services that comply with the highest quality standards.

DESIGN AND MANUFACTURING

Capelec designs, develops and manufactures all its solutions: mechanical, electronic and software.

The centralization of the production site, R&D office and services ensures responsiveness and quality of service.





A STRONG INTERNATIONAL COMMITMENT

Capelec exports to over 50 countries, on every continent and in every latitude.

Technologies comply with the needs and regulatory requirements of our various partnerships.



CONCILIATING TRANSPORT, ENVIRONMENT AND SAFETY

The solutions we develop aim to improve transport conditions and road safety for users. Air quality monitoring is also at the heart of our efforts.

Capelec is an active member of major international organizations, and participates in investigations focused on mobility and its challenges: worldwide, offering safer roads and limiting environmental and health nuisances.

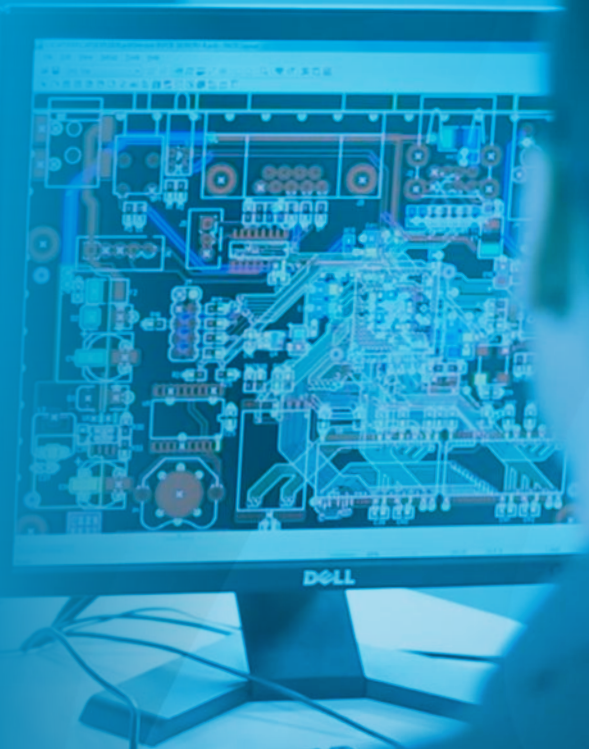


RESEARCH AND DEVELOPMENT

Capelec is constantly expanding its range.

Nearly 25% of our workforce is dedicated to the Research and Development of innovative solutions.

The range of equipment and software is complete and constantly evolving, to meet the sector's most demanding expectations.



METROLOGY



REGULATORY



TECHNOLOGIES

Capelec Engineering Department stands out for its mastery of the full range of know-how.

It combines technological and regulatory expertise. Areas of expertise : mechanical, electronic, IT, compliance and data centralization.

R&D is constantly on the lookout for new technologies to keep pace with progress, and is constantly upgrading skills.

Reactive, the engineering department anticipate, analyze and readjust.



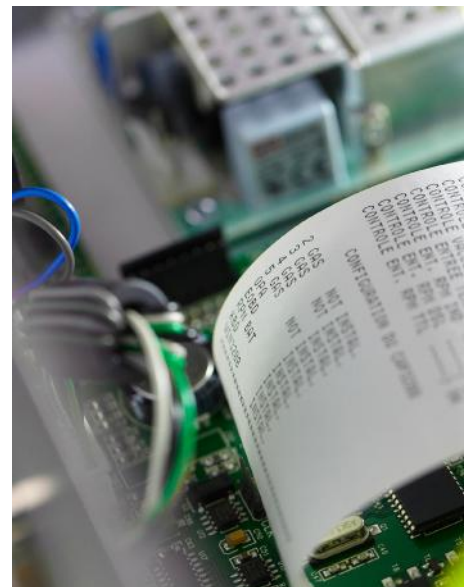
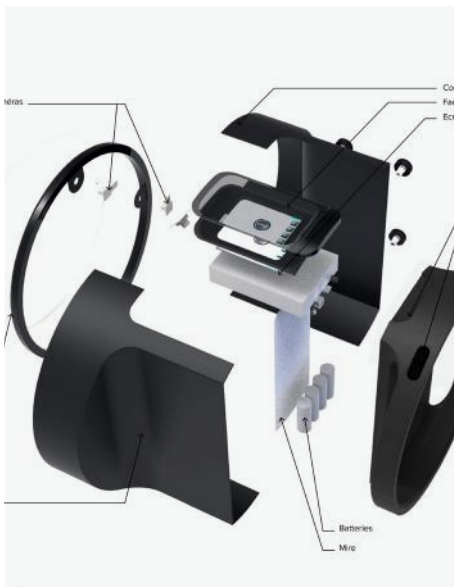
MECHANICS



ELECTRONICS



SOFTWARE





SUPPORT

Sales teams provide advice and support on equipment selection, maintenance and center implementation.

@ contact@capelec.com

+33(0)4 156 156

www.capelec.com

EXPERTISE



ASSISTANCE



WARRANTY

+1
AN



ASSISTANCE

Competent and available, the Technical Support Service diagnoses breakdowns and provides rapid solutions.

The remote maintenance service provides remote control of your connected equipment.



TRAINING

Our technicians are trained to install to repair and maintain equipment.

Services are tailored to your needs:

- Commissioning
- Verification and calibration
- Operation





INSPECTION LINES 9

LV HGV FULL TEST LANE	10
LV HGV MOBILE INSPECTION LANE	12

EMISSIONS 15

MULTIFUNCTION COMBINED STATIONS	17
GAS ANALYSERS	20
SMOKEMETERS	22
PARTICLE COUNTERS	23
EMISSIONS EXPERTISE	24
OBD SCANTOOLS	30
MEASURING AND COMMUNICATION	31

LIGHTING 33

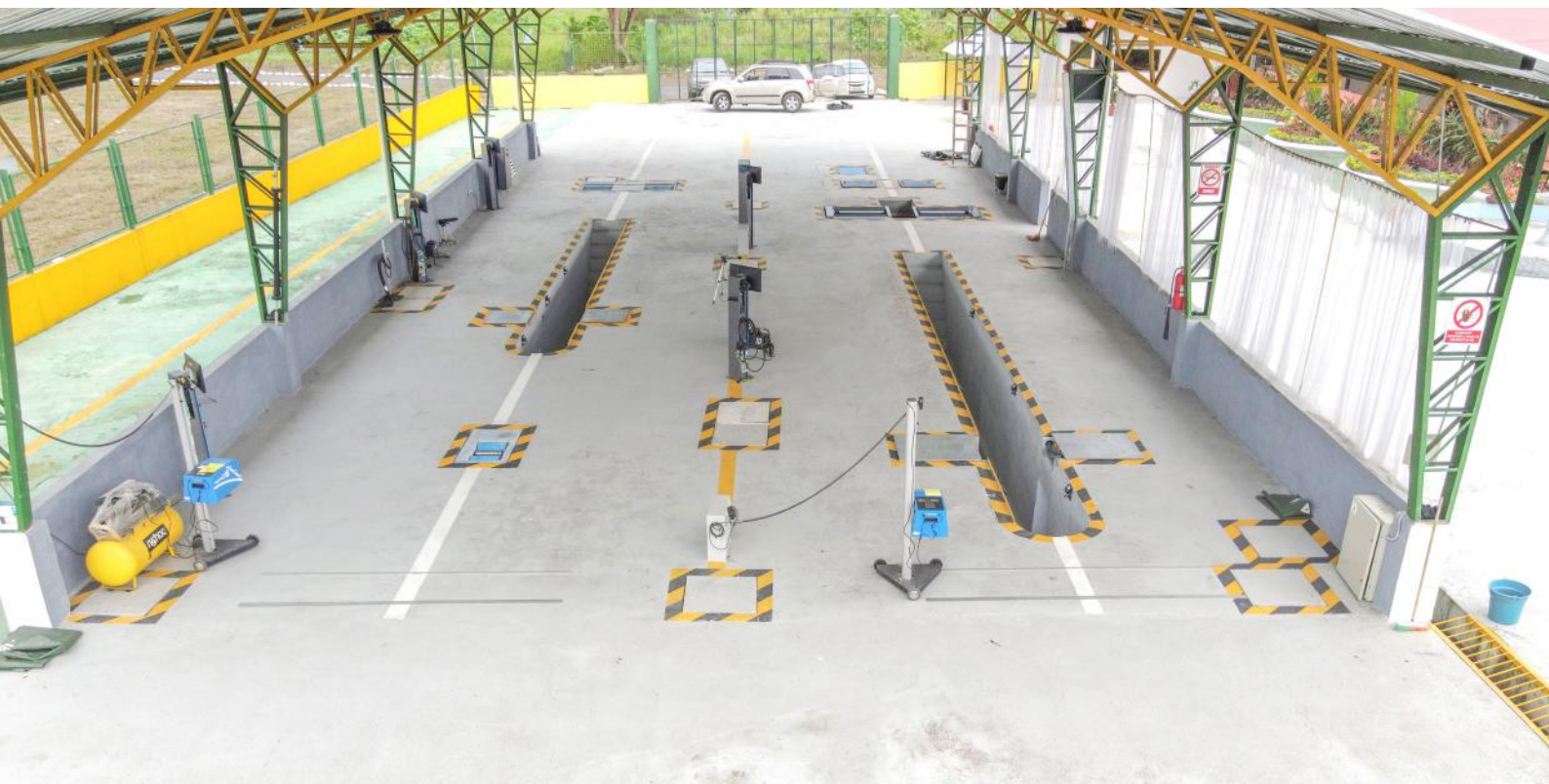
HEADLIGHT TESTERS	34
LIGHTING EXPERTISE	36

GROUND 39

LV LV+ TEST LANE	41
HGV MIXED TEST LANE	44
2, 3 AND 4 WHEELS BRAKE TESTERS	46
PLAY DETECTORS	52
DECELEROMETER	53

OTHER TESTERS 55

SONOMETERS	55
SPEED-MEASURING SYSTEM	55
TAXIMETER TEST BENCH	56
TINT GLASS METER	56



INSPECTION LINES

PERIODICAL TECHNICAL INSPECTION



LV | HGV FULL TEST LANE

10



LV | HGV MOBILE INSPECTION LANE 12

LV | HGV FULL TEST LANE

EFFICIENT ROADWORTHINESS

The CAP20000 test lane includes all equipment required to carry out mandatory inspections, data centralization and easy commissioning.

FULL TEST LANE FOR ALL VEHICLE TYPES





L CAT.



LV CAT.



HGV CAT.

Emission Testing Equipment

Gas analyser	✓	✓	
Smokemeter	✓	✓	✓
Particle counter	✓	✓	✓
OBD scantool	✓	✓	✓
Tachometer	✓	✓	✓

Headlight Testing Equipment

Headlight tester	✓	✓	✓
------------------	---	---	---

Brake Testing Equipment

Brake tester	✓	✓	✓
Suspension tester		✓	✓*
Side slip tester		✓	
Play detectors		✓	✓
Decelerometer	✓	✓	✓

Other testers

Taximeter tester		✓	
Sonometer	✓	✓	✓

CAP20000 full testing line

* Mixed test lane



LV | HGV MOBILE INSPECTION LANE

TRANSPORTABLE INSPECTION LINE

Complete, fast to operate and commission.

The CAP CHRONO 10510 mobile test unit performs the main inspections, and guarantee the safety and availability of vehicle fleet.





LV AND HGV MOBILE TEST LANE

Platform

Weight 6000 kg | 10' rollout

12 m semitrailer (king pin) | 3 axels

4 hydraulic supports

Power generator 25 kVA

Inspection area : 4 x 8 x 5 m

Equipment

Roller brake tester

Suspension tester

Side slip tester

Play detector *(optional)*

Petrol & diesel emission testers

Headlight tester

PTI / MOT software management *(optional)*

Container

ISO 40' container

5 m² office

Complete office desk

PC and printer

Air conditioning A/C

CAP CHRONO 10510





The CAP3070 operates with Extended Diffusion Charging innovative technology.

Cost-effective, it guarantees reliable results, and fast and easy measurement.

RELIABLE AND PROVEN MEASUREMENTS

The CAP3070 PN counter complies with the requirements fixed by legislation in the Netherlands, Belgium, Switzerland and Germany. Further approvals are in progress.

The straight-through design keeps the sensor clean for **extended operating time**.

The measurement is done at idle in less than 30 seconds without acceleration, not polluting, not noisy.



PATENTED SOOT-FREE SOLUTION

Extended DC Technology :

- High availability
- No cleaning
- No recalibration
- No consumables

EMISSIONS

INSPECTION & WORKSHOP EQUIPMENT



MULTIFUNCTION COMBINED STATIONS 17



GAS ANALYSERS 20



SMOKEMETERS 22



PARTICLE COUNTERS 23



EMISSIONS EXPERTISE 24



OBD SCANTOOLS 30
MEASURING AND COMMUNICATION 32



MODULAR SOLUTIONS

- 4 or 5 Gases Analyzer
 - Smokemeter
- Particle Analyzer
 - OBD Scantool
- Revolution Counter

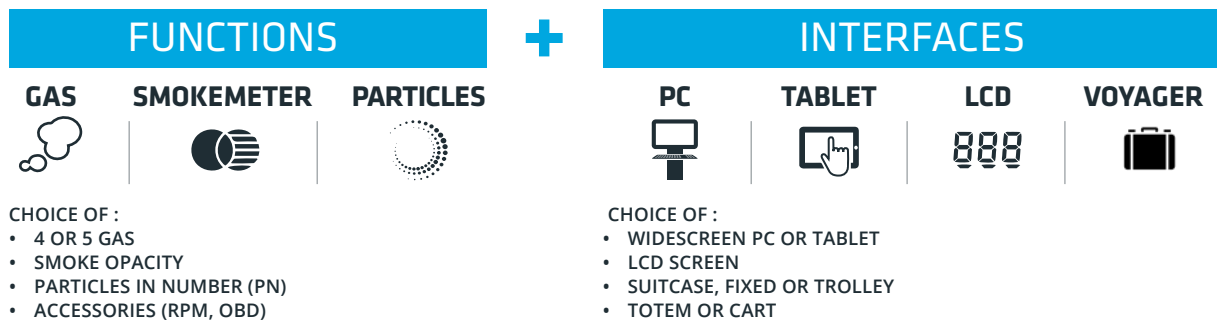
GAS | SMOKEMETER | PARTICLES

A complete range of equipment stand alone or combined.

FLEXIBILITY : carry out all emissions tests for your business: vehicles inspection, repair workshop, fleet management.

SCALABILITY : adapt your equipment to technical and regulatory developments, and upgrade to new functions adding accessories or options.

SETUP THE EQUIPMENT



- 1 Gas + Particle analyzer + touch-screen PC on Totem (optional mobile holder)
- 2 Stand-alone LCD gas analyzer (optional mobile holder)
- 3 Gas analyzer + Tablet on mobile holder
- 4 Smokemeter
- 5 Portable gas analyzer



MULTIFUNCTION COMBINED STATIONS

GAS | SMOKEMETER | PARTICLES

Equipment combining main functions, available with different interfaces, and a wide choice of options and accessories.



CAP3201 STANDALONE

4 GASES | SMOKEMETER

RS232 communication

LCD display | 5 key keyboard | Built-in printer

S3201 software

- ✓ CAP3210 gas analyser
- ✓ CAP3030 smokemeter
- ✓ RPM inductive and piezo sensor
- ✓ Sampling probes
- ✓ Oil temperature sensor

CAP3201EX-GO4

GAS ANALYSER TECHNICAL SPECIFICATIONS

Complying with standards : OIML R99, Class 0, ISO 3930, BAR 97, MID

HC : 0-10 000 ppm (C₆H₁₄) Hexane
0-20 000 ppm (C₃H₈) Propane

CO : Range 0 - 15 %

CO₂ : Range 0 - 20%

O₂ : Range 0 - 25 %

Lambda : Range 0 - 9,99

SMOKEMETER TECHNICAL SPECIFICATIONS

Complying with standards : ISO 11614, NFR 10-025

- Opacity range : 0,00 to 9,99 m⁻¹
- Opacity resolution : 0,01 m⁻¹

✓ DUAL MODES : INSPECTION & WORKSHOPS



CAP3550 VOYAGER

4 GASES | SMOKEMETER

Wireless communication

S3550 software

Carrying cases

- ✓ Suitcase 1 : CAP3010 gas analyser
- ✓ Suitcase 2 : 10" tablet & accessories
- ✓ CAP3030 BT smokemeter
- ✓ Sampling probes
- ✓ Oil temperature sensor

CAP3550EX-4GO

GAS ANALYSER TECHNICAL SPECIFICATIONS

Complying with standards : OIML R99, Class 0, ISO 3930, BAR 97, MID

HC : 0-10 000 ppm (C₆H₁₄) Hexane
0-20 000 ppm (C₃H₈) Propane

CO : Range 0 - 15 %

CO₂ : Range 0 - 20%

O₂ : Range 0 - 25 %

Lambda : Range 0 - 9,99

SMOKEMETER TECHNICAL SPECIFICATIONS

Complying with standards : ISO 11614, NFR 10-025

- Opacity range : 0,00 to 9,99 m⁻¹
- Opacity resolution : 0,01 m⁻¹

✓ DUAL MODES : INSPECTION & WORKSHOPS



CAP3500 TABLET

4 GASES | SMOKEMETER

Wireless communication

S3500 software

Accessory storage

- ✓ CAP3010 gas analyser
- ✓ CAP3030 BT smokemeter
- ✓ 10" tablet and mobile holder
- ✓ Sampling probes
- ✓ Oil temperature sensor

CAP3500EX-GO8

GAS ANALYSER TECHNICAL SPECIFICATIONS

Complying with standards : OIML R99, Class 0, ISO 3930, BAR 97, MID

HC : 0-10 000 ppm (C₆H₁₄) Hexane
0-20 000 ppm (C₃H₈) Propane

CO : Range 0 - 15 %

CO₂ : Range 0 - 20%

O₂ : Range 0 - 25 %

Lambda : Range 0 - 9,99

SMOKEMETER TECHNICAL SPECIFICATIONS

Complying with standards : ISO 11614, NFR 10-025

• Opacity range : 0,00 to 9,99 m⁻¹

• Opacity resolution : 0,01 m⁻¹

✓ DUAL MODES : INSPECTION & WORKSHOPS



CAP3600 TOTEM

4 GASES | SMOKEMETER

Wireless communication

S3600 software

Accessory storage

- ✓ CAP3010 gas analyser
- ✓ CAP3030 BT smokemeter
- ✓ 22" touch screen on Totem pole
- ✓ Remote control
- ✓ Sampling probes
- ✓ Oil temperature sensor

CAP3600EX-GOM

GAS ANALYSER TECHNICAL SPECIFICATIONS

Complying with standards : OIML R99, Class 0, ISO 3930, BAR 97, MID

HC : 0-10 000 ppm (C₆H₁₄) Hexane
0-20 000 ppm (C₃H₈) Propane

CO : Range 0 - 15 %

CO₂ : Range 0 - 20%

O₂ : Range 0 - 25 %

Lambda : Range 0 - 9,99

SMOKEMETER TECHNICAL SPECIFICATIONS

Complying with standards : ISO 11614, NFR 10-025

• Opacity range : 0,00 to 9,99 m⁻¹

• Opacity resolution : 0,01 m⁻¹

✓ DUAL MODES : INSPECTION & WORKSHOPS

GAS ANALYSERS

GASOLINE ENGINES

Measurement of level of the 4 gases concentration emitted by combustion engines : HC, O₂, CO et CO₂. Interface and functions differ according to model.



CAP3201 STANDALONE

4 GASES

RS232 communication

LCD display | 5 key keyboard | Built-in printer

S3201 software

- ✓ CAP3210 gas analyser
- ✓ RPM inductive and piezo sensor
- ✓ Sampling probe
- ✓ Oil temperature sensor

CAP3201EX-G

GAS ANALYSER TECHNICAL SPECIFICATIONS

Complying with standards : OIML R99, Class 0, ISO 3930, BAR 97, MID

HC : 0-10 000 ppm (C₆H₁₄) Hexane
0-20 000 ppm (C₃H₈) Propane

CO : Range 0 - 15 %

CO₂ : Range 0 - 20%

O₂ : Range 0 - 25 %

Lambda : Range 0 - 9,99

✓ DUAL MODES : INSPECTION & WORKSHOPS



CAP3500 TABLET

4 GASES

Wireless communication

S3500 software

Accessory storage

- ✓ CAP3010 gas analyser
- ✓ 10" tablet and mobile holder
- ✓ Sampling probe
- ✓ Oil temperature sensor

CAP3500EX-G8

GAS ANALYSER TECHNICAL SPECIFICATIONS

Complying with standards : OIML R99, Class 0, ISO 3930, BAR 97, MID

HC : 0-10 000 ppm (C₆H₁₄) Hexane
0-20 000 ppm (C₃H₈) Propane

CO : Range 0 - 15 %

CO₂ : Range 0 - 20%

O₂ : Range 0 - 25 %

Lambda : Range 0 - 9,99

✓ DUAL MODES : INSPECTION & WORKSHOPS



CAP3550 VOYAGER

4 GASES

Wireless communication

S3550 software

Carrying cases

- ✓ Suitcase 1 : CAP3010 gas analyser
- ✓ Suitcase 2 : 10" tablet & accessories
- ✓ Sampling probe
- ✓ Oil temperature sensor

CAP3550EX-4G

GAS ANALYSER TECHNICAL SPECIFICATIONS

Complying with standards : OIML R99, Class 0, ISO 3930, BAR 97, MID

HC : 0-10 000 ppm (C₆H₁₄) Hexane
0-20 000 ppm (C₃H₈) Propane

CO : Range 0 - 15 %

CO₂ : Range 0 - 20%

O₂ : Range 0 - 25 %

Lambda : Range 0 - 9,99

- ✓ DUAL MODES : INSPECTION & WORKSHOPS



CAP3600 TOTEM

4 GASES

Wireless communication

S3600 software

Accessory storage

- ✓ CAP3010 gas analyser
- ✓ 22" touch screen on Totem pole
- ✓ Remote control
- ✓ Sampling probe
- ✓ Oil temperature sensor

CAP3600EX-GM

GAS ANALYSER TECHNICAL SPECIFICATIONS

Complying with standards : OIML R99, Class 0, ISO 3930, BAR 97, MID

HC : 0-10 000 ppm (C₆H₁₄) Hexane
0-20 000 ppm (C₃H₈) Propane

CO : Range 0 - 15 %

CO₂ : Range 0 - 20%

O₂ : Range 0 - 25 %

Lambda : Range 0 - 9,99

- ✓ DUAL MODES : INSPECTION & WORKSHOPS

SMOKEMETERS

DIESEL ENGINES

Measure exhaust fumes from internal combustion engines. Available with or without interface. Features differ according to model.



CAP3201 STANDALONE

SMOKEMETER

RS232 communication

LCD display | 5 key keyboard | Built-in printer

S3201 software

- ✓ CAP3030 smokemeter
- ✓ Piezo sensor
- ✓ Sampling probe
- ✓ Oil temperature sensor

CAP3200EX-O

SMOKEMETER TECHNICAL SPECIFICATIONS

Complying with standards : ISO 11614, NFR 10-025

- Opacity range : 0,00 to 9,99 m⁻¹
- Opacity resolution : 0,01 m⁻¹

✓ DUAL MODES : INSPECTION & WORKSHOPS



CAP3550 VOYAGER

SMOKEMETER

Wireless communication

S3550 software

Carrying case

- ✓ Suitcase : 10" tablet and accessories
- ✓ CAP3030 BT smokemeter
- ✓ Sampling probe
- ✓ Oil temperature sensor
- ✓ RPM

CAP3550EX-O

SMOKEMETER TECHNICAL SPECIFICATIONS

Complying with standards : ISO 11614, NFR 10-025

- Opacity range : 0,00 to 9,99 m⁻¹
- Opacity resolution : 0,01 m⁻¹

✓ DUAL MODES : INSPECTION & WORKSHOPS



CAP3600 TOTEM

SMOKEMETER

Wireless communication

S3600 software

Accessory storage

- ✓ CAP3030 BT smokemeter
- ✓ 22" touch screen on Totem pole
- ✓ Remote control
- ✓ Sampling probe
- ✓ Oil temperature sensor

CAP3600EX-OM

SMOKEMETER TECHNICAL SPECIFICATIONS

Complying with standards : ISO 11614, NFR 10-025

- Opacity range : 0,00 to 9,99 m⁻¹
- Opacity resolution : 0,01 m⁻¹

✓ DUAL MODES : INSPECTION & WORKSHOPS

PARTICLE COUNTERS

DIESEL ENGINES

The fine-particle count indicates whether the vehicle's particulate filter is working properly.



CAP3500 TABLET

PARTICLES

Wireless communication
S3070 software

- ✓ CAP3070 particle counter
- ✓ Trolley
- ✓ 10" tablet and accessories
- ✓ Heated sampling probe

CAP3500EX-P8

PN TECHNICAL SPECIFICATIONS

Approvals: NMI, METAS, PTB
Measuring range : 5 000 to 5 000 000 particles/cm³
Resolution of indication : 1000 particles/cm³
Extended Diffusion Charging Technology

- ✓ DUAL MODES : INSPECTION & WORKSHOPS



CAP3600 TOTEM

PARTICLES

Wireless communication
S3070 software
Accessory storage

- ✓ CAP3070 particle counter
- ✓ 22" touch screen on Totem pole
- ✓ Remote control
- ✓ Heated sampling probe

CAP3600EX-P

PN TECHNICAL SPECIFICATIONS

Approvals: NMI, METAS, PTB
Measuring range : 5 000 to 5 000 000 particles/cm³
Resolution of indication : 1000 particles/cm³
Extended Diffusion Charging Technology

- ✓ DUAL MODES : INSPECTION & WORKSHOPS



CAP3070 STAND ALONE

TO BE CONNECTED TO AN EXISTING STATION

Wireless communication
S3070 software

- ✓ CAP3070 particle counter
- ✓ Heated sampling probe

LV	CAP3070EX-LV
HDV	CAP3070EX-HGV

PN TECHNICAL SPECIFICATIONS

Approvals: NMI, METAS, PTB
Measuring range : 5 000 to 5 000 000 particles/cm³
Resolution of indication : 1000 particles/cm³
Extended Diffusion Charging Technology

- ✓ DUAL MODES : INSPECTION & WORKSHOPS

AFTERMARKET EMISSION EXPERTISE



4 GASES | NO_x | SMOKEMETER

Aftermarket exhaust emissions compliance.

The WORKSHOP® range combines expertise in PTI / MOT equipment optimised to the garage market.

It enables a complete diagnosis to be made before repair, and a detailed report to be produced after servicing.

WORKSHOP® FEATURES

COMPLIANCE



DIAGNOSTIC



REPORTS



- Pre-technical inspection
- Complete engine combustion diagnostics
- Pre-post repair tests
- Technical and customer detailed reports



1

- 1 CAP3600 Workshop® Totem
- 2 CAP3500 Workshop® Tablet
- 3 PTI/MOT procédure
- 4 Live value curves
- 5 Before / After report



2



3



4



5



CAP3600 WORKSHOP® TOTEM

5 GASES | SMOKEMETER

Wireless communication

S3600 WS software

Accessory storage

- ✓ CAP3010 gas analyser
- ✓ CAP3030 BT smokemeter
- ✓ CAP8535 RPM module
- ✓ CAP4350 OBD module
- ✓ 22" touch screen on mobile Totem pole
- ✓ Remote control
- ✓ Sampling probes
- ✓ Oil temperature sensor

CAP3600EXWS-GOM

GAS ANALYSER TECHNICAL SPECIFICATIONS

Complying with standards : OIML R99, Class 0, ISO 3930, BAR 97, MID

- HC : 0-10 000 ppm (C₆H₁₄) Hexane
0-20 000 ppm (C₃H₈) Propane
- CO : Range 0 - 15 %
- CO₂ : Range 0 - 20%
- O₂ : Range 0 - 25 %
- Lambda : Range 0 - 9,99
- NOx : 0 - 5 000 ppm

SMOKEMETER TECHNICAL SPECIFICATIONS

Complying with standards : ISO 11614, NFR 10-025

- Opacity range : 0,00 to 9,99 m⁻¹
- Opacity resolution : 0,01 m⁻¹

✓ DUAL MODES : INSPECTION & WORKSHOPS



CAP3500 WORKSHOP® TABLET

5 GASES | SMOKEMETER

Wireless communication

S3500 WS software

Accessory storage

- ✓ CAP3010 gas analyser
- ✓ CAP3030 BT smokemeter
- ✓ CAP8520 RPM module
- ✓ CAP4350 OBD module
- ✓ 10" tablet and mobile holder
- ✓ Sampling probes
- ✓ Oil temperature sensor

CAP3500EX-5G04

GAS ANALYSER TECHNICAL SPECIFICATIONS

Complying with standards : OIML R99, Class 0, ISO 3930, BAR 97, MID

- HC : 0-10 000 ppm (C₆H₁₄) Hexane
0-20 000 ppm (C₃H₈) Propane
- CO : Range 0 - 15 %
- CO₂ : Range 0 - 20%
- O₂ : Range 0 - 25 %
- Lambda : Range 0 - 9,99
- NOx : 0 - 5 000 ppm

SMOKEMETER TECHNICAL SPECIFICATIONS

Complying with standards : ISO 11614, NFR 10-025

- Opacity range : 0,00 to 9,99 m⁻¹
- Opacity resolution : 0,01 m⁻¹

✓ DUAL MODES : INSPECTION & WORKSHOPS



CAP3500 WORKSHOP® TABLET

5 GASES

Eco Entretien approved

Wireless communication

S3600 WS software

Accessory storage

- ✓ CAP3010 gas analyser
- ✓ CAP4350 OBD module
- ✓ 10" tablet and mobile holder
- ✓ Sampling probe
- ✓ Oil temperature sensor

CAP3500EE-5G

GAS ANALYSER TECHNICAL SPECIFICATIONS

Complying with standards : OIML R99, Class 0, ISO 3930, BAR 97, MID

- HC : 0-10 000 ppm (C₆H₁₄) Hexane
0-20 000 ppm (C₃H₈) Propane
- CO : Range 0 - 15 %
- CO₂ : Range 0 - 20%
- O₂ : Range 0 - 25 %
- Lambda : Range 0 - 9,99
- NOx : 0 - 5 000 ppm

✓ DUAL MODES : INSPECTION & WORKSHOPS

COMMON OPTIONS

MEASUREMENT



PN particle counter module
Set to change into a combi unit
Extended Diffusion Charging technology
LV probe: 2m | HGV probe: 4m

LV CAP3070EX-LV

HGV CAP3070EX-HGV



Motorbike gaz analyser set
Feet and ajustable support
Universal exhaust pipe adaptor
Exhaust pipe extension

CAP3200-KITMOTO



HGV opacity smokemeter probe and hose
Heated probe | 2,50m long
Hose | 3,16m long

SSE01099



Smokemeter hose

1.5m PRO01028

2m PRO01030

3m PRO03602

3.5m PRO03817



HGV smokemeter extension pipe
Rod, pipe and handle
2m long
Storage handle

CAP3030-CPPL

CAP3030-CPPLC (heated)



Exhaust probe extender

PRE00123

RPM & OIL TEMPERATURE



Infrared temperature probe
Laser pointer | LCD screen
Bluetooth wireless connection | Powered 12V
Requires CAP1220

CAP1330



Tachometer & thermometer | Battery
Battery cable & cigar-lighter cables
Temperature probe | Bluetooth communication
Requires CAP1220

CAP8520



Thermometer & tachometer | Bat and Vib
Temperature probe | Battery and cigar-lighter cables
Wireless Bluetooth connection
LCD screen | Vibration sensor | Requires CAP1220

CAP8535



Contactless tachometer | Antenna technology
Gasoline engines speed measurement
Cable length 5m | Mounting : magnet
Integration : CAP853x

SSE01416

OBD, MOBILITY, COMMUNICATION



Connected OBD reader
Bluetooth | Wireless connection | Universal scan-
tool | Range of vehicles : light vehicles, HGV
Cables and OBD plug

CAP4350



Cell trolley
3 wheels | Brake | Handle
Compatible with opacity cell series CAP3030
& CAP3070

PRO03496



Probe holder
To be positioned close to the exhaust pipe

PRO03030

CAP3201 OPTIONS

MEASUREMENT



NOx measurement set
Adaptable to CAP3201 series

CAP3201-NOX



Smokemeter module CAP3030 v4
Set to upgrade a gas analyser into a combi unit
Complete cell probe, wires, connections

CAP3200-KITOPA-4

COMMUNICATION



WIN 3200 software | Windows OS
Operating with CAP32XX series
USB key | Connection cable

CAP3200-WIN3200



Keyboard
Wired | PS2 connector

AZERTY keyboard

PRO00518

QWERTY keyboard

PRO00968



Data encoder
Communication ports : USB, RJ45, RS232
Linux OS

RS232 connection

CAP1830F-R

Wireless Bluetooth connection

CAP1830F-B

MOBILITY



Workshop trolley | Wheel base | Steel frame
Compatible with CAP32XX series
Colours : grey, blue | CAPELEC branded

PRO03106



Power converter | Cigar lighter
12VDC/230V AC

PRO01807



RS232 converter to Bluetooth

CAP3201 control port antenna

CAP1220

CAP32XX PC communication antenna

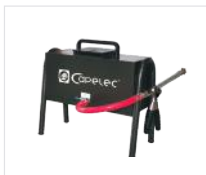
CAP1223

CAP3030 smoke cell antenna

CAP1221

CAP3500/CAP3600 OPTIONS

MEASUREMENT



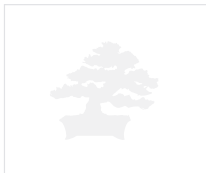
Smokemeter module CAP3030 v4 | Horizontal
 Upgrading a gas analyser into a combined unit
 Probe | Holder | Wireless connection
 Bluetooth | S3030 software | Power supply cable

CAP3600M-OPA4



4 gas analyser module | Wires & connectors
 Upgrading a smoke meter into a combined unit
 Temperature probe | Filters
 S3600 Software | MID approval

CAP3600M-GAZEU



NOx measurement set

CAP3600M-NOX

ERGONOMY



Additional screen
 With totem bracket

22" additional screen	CAP00941
22" additional touchscreen	CAP00945
27" additional touchscreen	CAP00947



IR remote control
 USB | infrared receiver
 Compatible with CAP9XXX & CAP3XXX series

CAP1000-RCIR-USB

CAP3600 OPTIONS

MOBILITY



Mobile base | Metal | Grey
4 steering wheels | Protective bumper | Brake
Compatible with CAPELEC totem

PRO03017

ERGONOMY



Keyboard holder | Adjustable
Adaptable to Capelec totem

PRO03029



Wireless keyboard
For PC | Bluetooth
QWERTY type

PRO03425

STORAGE



Screen protective cover
Polyester fabrics | Black

PRO02686

CAP3070 OPTIONS



Heated long probe PNC
Heated probe
Insulation | Socket | Handle

Length 2 m

SSE01316

Length 4 m

SSE01317

OBD SCANTOOLS




ON BOARD DIAGNOSTIC

Systems for accessing on-board computer information: reading DTC codes and ECU data.

OBD / OBFCM COMPLIANT



Connection :

-  22" touch screen on Totem, remote control
-  10" tablet
-  Laptop suitcase

OBD READER CONNECTED

ALL VEHICLE TYPES

- ____ All brands and vehicles
- ____ OBFCM compliant
- ____ Bluetooth transmission
- ____ Cable-free or extension cable
- ____ Interchangeable with CAP4220 and CAP4250

- ✓ CAP4350 OBD module
- ✓ Cable

CAP4350

OBD / OBFCM COMPLIANT



OBD READER TABLET

ALL VEHICLE TYPES

- ____ All brands and vehicles
- ____ OBFCM compliant
- ____ Bluetooth transmission
- ____ Cable-free or extension cable
- ____ Interchangeable with CAP4220 and CAP4250

- ✓ CAP4350 OBD module
- ✓ Cable
- ✓ Tablet and protective case

CAP4350-T

OBD OPTIONS

COMMUNICATION



Extension cable
OBD extension cord

PRO04004

ACCESSORIES



Truck adaptor plug
OBD round connector
Heavy trucks

PRO01597

MEASURING AND COMMUNICATION DEVICES



TACHOMETER THERMOMETER

REVOLUTION COUNTER

Oil temperature

Dual mode : battery and vibration

Bluetooth transmission

Keyboard | LCD screen

S8535 software

✓ CAP8535 revolution counter module

CAP8535



To be connected to a CAP8533
or CAP8535

CONTACTLESS TACHOMETER

Antenna technology

Gasoline engines speed measurement

Cable length 5m | Mounting : magnet

Integration : CAP8533, CAP8535

✓ SSE01416 module

SSE01416



INNOVATION AND ERGONOMICS

2.5X LENS FORMAT

Lens suitable for all technologies

Beyond standard optics, the CAP2700's unique lens format allows for the evaluation of all designs and technologies: extra-wide headlights, adaptive headlights, and smart headlights.

NEW S2700 INTERFACE

- Intelligent centering system
- Fully digital measurement compensated in real time by the inclinometer
- Remote display and input solution on PC



SMART CONTROL SYSTEM

Fast measurement and movement with one hand

The exclusive Smart Control system controls and validates operations via the validation button integrated into the CAP2700 handle: the procedure takes just a few seconds and is extremely easy to use.



LIGHTING

INSPECTION & WORKSHOP EQUIPMENT



HEADLIGHT TESTERS

34



LIGHTING EXPERTISE

36

HEADLIGHT TESTERS

ALL HEADLAMP TYPES

Capelec headlamp testers provide fast and precise testing. The range adapts to all environment : connected, automated or mechanical, wheeled or rail-mounted.



✓ Wheel base
Also available with rail base.



CAP2100 MECHANICAL

HEADLAMPS: HALOGEN, XENON, LED

Laser alignment

1.8 m aluminum column

Fresnel lens | Counterweight

CAP2100-W

TECHNICAL SPECIFICATIONS

Cut-off



✓ Wheel base
Also available with rail base.



CAP2500 CONNECTED

WITH PHOTODIODES

Headlamps: halogen, xenon, LED

Laser alignment | Positioning assistance

1.8 m aluminum column

Fresnel lens | Counterweight

S2300 software | Precise light sensor

Multilingual | LCD display

Connection: RS232 communication port, Bluetooth

Battery and charger

For a rail base,
add the appropriate set of rails. See options.

TECHNICAL SPECIFICATIONS

Angle measurement

- Cut-off measurement : from +2% to -4%
- Accuracy : +/- 0,2%

Intensity measurement

- Cut-off measurement : 0/125 kcd or 0/200 lux
- Accuracy : 10%

Lateral : yes / no

	Wheel base	Rails base *
Right drive	CAP2500EX-TDWB	CAP2500EX-TDRB
Left drive	CAP2500EX-TGWB	CAP2500EX-TGRB

* Rails not included.

✓ DUAL MODES : INSPECTION & WORKSHOPS

NEW**CAP2700 CONNECTED****SMART CONTROL**

CDD camera

Halogen, Xenon, Bi-Xenon, LED, Bi-LED, Laser

Tilt compensation

Laser alignment | Positioning assistance

S2700 software

Multilingual | Color touch screen

Connections: RJ45, USB, Wifi

Long-life battery and charger

Protective cover

✓ Common base for
wheel and rail versions



Wheel base	CAP2700FR-W
Rail base (without rails)	CAP2700FR-S
Rail base (with rails)	CAP2700FR-R

TECHNICAL SPECIFICATIONS

Angle measurement

- Cut-off measurement : from +6% to -6%
- Accuracy : +/- 0,2%
- Side deviation : -10/+10 %
- Yaw angle : -90/+90°
- Roll angle : -90/+90°

Intensity measurement

- Cut-off measurement : 0/125 kcd or 0/200 lux
- Accuracy : 10%

AFS adjustment

✓ WORKSHOP MODE

CAP2900 AUTOMATED**AUTOMATIC MEASUREMENT AND ALIGNMENT**

CDD camera

Tilt compensation

S2900 software | Data transmission (ethernet)

Multilingual | Color touch screen | Linux

Connection: RJ45, USB, Wifi

1.7 m column | 5-position LED display

2 IR barriers for vehicle positioning

Wired power supply and communication (GIEGLAN)

Motion detection sensors

✓ 4.5 m rail base
included



CAP2900EX-AF

TECHNICAL SPECIFICATIONS

Angle measurement

- Cut-off measurement : from +6% to -6%
- Accuracy : +/- 0,2%
- Side deviation : -10/+10 %
- Yaw angle : -90/+90°
- Roll angle : -90/+90°

Intensity measurement

- Cut-off measurement : 0/125 kcd or 0/200 lux
- Accuracy : 10%

AFS adjustment

✓ DUAL MODES : INSPECTION & WORKSHOPS

LIGHTING EXPERTISE

WORKSHOP® range
For use in all areas
of the garage



Carry out a complete and accurate lighting safety diagnosis.

- Easy implementation
- ANYWHERE® multi-zone operation
- Pre-PTI inspection

The CAP2700 Workshop® combines Capelec's PTI/MOT expertise with features adapted to the garage market.

WORKSHOP® FEATURES

MULTI-ZONE



AFS



COMPLIANCE



SMART CONTROL WORKSHOP® HEADLIGHT TESTER

Smart Control feature

Extra-wide lens

S2700 software

Quick maintenance

Halogen, Xenon, Bi-Xenon, LED, Bi-LED, Laser, AFS

Camera | Alignment laser | Positioning aid

Multilingual | LCD touchscreen

Long-life battery and charger

GARAGE EXPERTISE

Ground compensation system

Self commissioning

Pre-PTI inspection | Lighting diagnostics

CAP2600WS-WIGA

- ✓ Module ANYWHERE®
- ✓ Protective cover

TECHNICAL SPECIFICATIONS

Angle measurement

- Cut-off measurement : from +6% to -6%
- Accuracy : +/- 0,2%
- Side deviation : -10/+10 %
- Yaw angle : -90/+90°
- Roll angle : -90/+90°

Intensity measurement

- Cut-off measurement : 0/125 kcd or 0/200 lux
- Accuracy : 10%

AFS adjustment

- ✓ GARAGE MODE

COMMON OPTIONS (EXCEPT CAP2900)

ERGONOMY



Set of 2 metallic LV rails
1,5m length | Galvanised steel

CAP2500-OPTRAIL1.5



Reinforced metallic HGV rail
1,5m length | Galvanised steel
Built-in rail

PRO03469



Handle
Metal

PRO02209



Brake set
Foot blocking

PRO02860



Protection cover
Black fabric

PRO02294

PRINTERS



Thermal printer | Wireless BT
Battery and charger

RS232 connection

CAP1000-IMPRS

Wireless connection

CAP1000-IMPBT

CAP2700 OPTIONS

ADD-ON



Anywhere module
Pair | Laser pointer
Bluetooth communication
Ground compensation

SSE01169

ERGONOMY



Metal guide handle
Compatible with 2X00 series | Black
Ergonomic grip

PRO02209



Foot brake for wheel base

PRO04674



Metal guide rails
2 rails | Length 1.50 m

CAP2500-OPTRAIL1.5



The CAP9110 is both compact and robust. It benefits from Capelec's expertise in measurement, and its ergonomics are highly appreciated by heavy goods vehicle professionals.

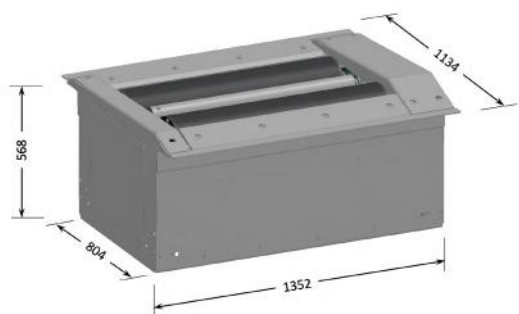
REDUCED DIMENSIONS

SIMPLIFIED IMPLEMENTATION

A compact footprint that fits into existing installations

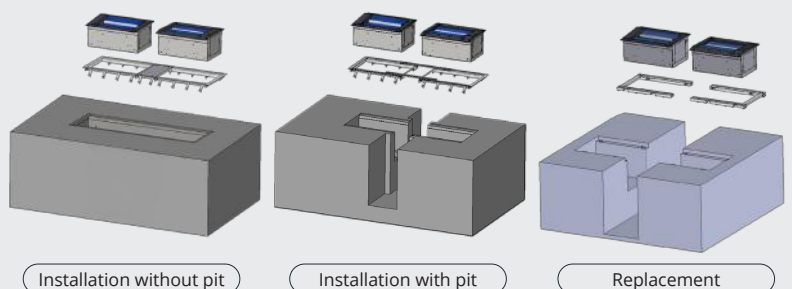
Thanks to its reduced dimensions, the CAP9110 adapts to all configurations. Civil engineering work is limited.

Dimensions	1352 x 804 x 568 mm (x2)
Roller length	1000 mm



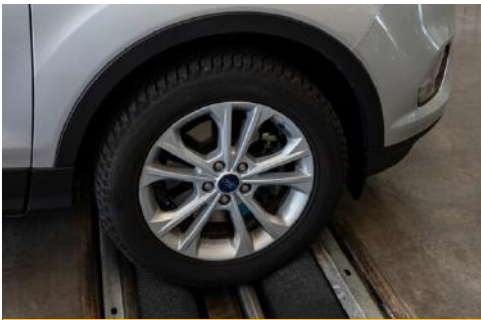
INSTALLATION AND REPLACEMENT

When replacing a brake tester, brand-specific adapters allow installation in existing civil engineering structures.



GROUND

INSPECTION & WORKSHOP EQUIPMENT



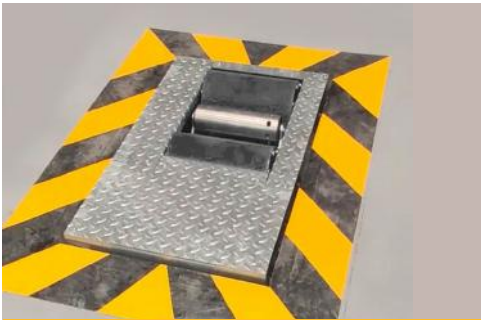
LV | LV+ TEST LANE

41



HGV | MIXED TEST LANE

44



2, 3 AND 4 WHEELS
BRAKE TESTERS

46



PLAY DETECTORS

52



DECELEROMETER

53

MODULAR SOLUTIONS

- Universal and compact
 - All vehicle types
- Creation or replacement
 - Scalable equipment

BRAKING | SUSPENSION | SIDE SLIP

A complete range of equipment stand alone or combined.

Capelec test benches can be integrated into all types of civil engineering, thanks to their compact dimensions and adaptable frames.

They can also be adapted to technical and regulatory developments via software and hardware updates, avoiding replacement costs.

ADAPT YOUR EQUIPMENT

FUNCTIONS

BRAKING



SUSPENSION



SIDE SLIP



VEHICLES

LV LV+



HGV

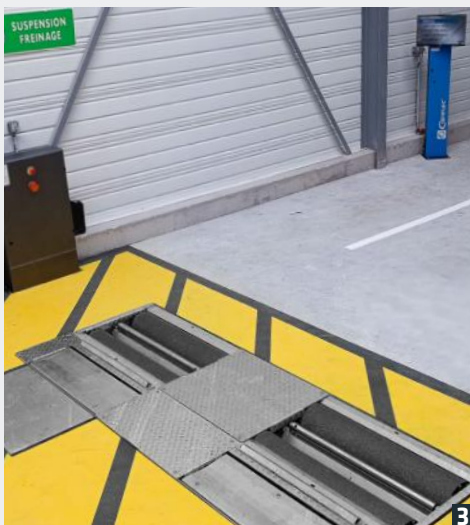


2 | 3 | 4 WHEELS



✓ PC interface on Totem + cabinet

- 1 LV brake tester only
- 2 Mixed LV and HGV brake tester without pit
- 3 LV 3-function brake tester + touch-screen PC on Totem pole
- 4 HGV brake tester with pit + touch-screen PC on Totem pole (*optional safety kit*)

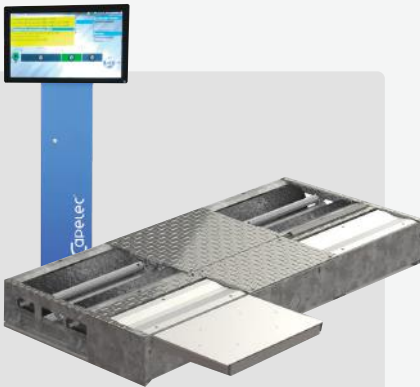


MULTI-FUNCTION LV | LV+ TEST LANE

BRAKING | SUSPENSION | SIDE SLIP

A device combining braking, suspension and slipping functions, and an interface.

COMPLETE TEST LANE



Modules :

- ✓ Brake tester
- ✓ Suspension tester
- ✓ Side slip tester
- ✓ Interface

In case of replacement :

Use the appropriate adapter frame.
See civil engineering options.

3-FUNCTION TEST LANE

BRAKING | SUSPENSION | SIDE SLIP

Soft starter

Exit assistance

4WD mode

3-Function Software S9010

INTERFACE

PC on totem | 23" touch screen

HF remote control

LV	CAP9010EX-MB
LV+	CAP9020EX-MB

BRAKE TESTER SPECIFICATIONS

- Roller speed : 5km/h
- Maximum Axle load : 4t
- Maximum load per wheel : 2t
- Maximum force :
 - CAP9010 4kW motor : 750 daN
 - CAP9020 4kW motor : 900 daN
- Three phased power supply
- Path :
 - LV : 80-220cm
 - LV+ : 80-280cm

DIMENSIONS

- LV : 232 x 69 x 28cm
- LV+ : 292 x 69 x 28cm

SUSPENSION TESTER SPECIFICATIONS

- Maximum Axle load : 4t
- Maximum load per wheel : 2t
- Three phased power supply

DIMENSIONS

- LV : 232 x 43 x 28cm
- LV+ : 292 x 43 x 28cm

SIDE SLIP TESTER SPECIFICATIONS

- Maximum load per wheel : 2t
- Deflection : +/- 20m/km

DIMENSIONS

- LV : 73 x 52 x 7cm
- LV+ : 85 x 52 x 7cm



LIGHT AND EXTRA LARGE VEHICLES TEST LANE

EQUIPMENT SETTINGS

- 1 | Select module(s): braking, suspension, slipping
- 2 | Add an interface: type of holder and screen
- 3 | Select options

1 | MODULES



✓ Braking module
Must be associated to an Interface.

Brake tester replacement :
Use the appropriate adapter frame.
See civil engineering add-ons.

BRAKE TESTER

Standard configuration :

Galvanised steel frame

Aluminium rollers | Epoxy coating

400V 3PH + N + EP power supply

4kW motor

LV	CAP9010-BRA
----	-------------

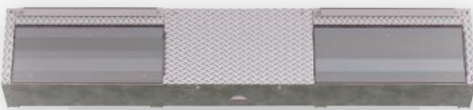
LV+	CAP9020-BRA
-----	-------------

SPECIFICATIONS

- Roller speed : 5km/h
- Maximum Axle load : 4t
- Maximum load per wheel : 2t
- Maximum force :
 - CAP9010 4kW motor : 750 daN
 - CAP9020 4kW motor : 900 daN
- Three phased power supply
- Path :
 - LV : 80-220cm
 - LARGE LV : 80-280cm

DIMENSIONS

- LV : 232 x 69 x 28cm
- LV+ : 292 x 69 x 28cm



✓ Suspension module
Must be associated to an Interface.

SUSPENSION TESTER

Standard configuration :

Galvanised steel frame

400V 3PH + EP power supply

3kW motor

LV	CAP9010-SUS
----	-------------

LV+	CAP9020-SUS
-----	-------------

SPECIFICATIONS

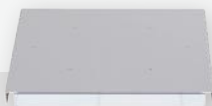
- Maximum Axle load : 4t
- Maximum load per wheel : 2t
- Three phased power supply

DIMENSIONS

- LV : 232 x 43 x 28cm
- LV+ : 292 x 43 x 28cm

TESTING METHOD

EUSAMA



✓ Slipping module
Must be associated to an Interface.

SIDE SLIP TESTER

Standard configuration :

Galvanised steel frame

LV	CAP9010-SIS
----	-------------

LV+	CAP9020-SIS
-----	-------------

SPECIFICATIONS

- Maximum load per wheel : 2t
- Deflection : +/- 20m/km

DIMENSIONS

- LV : 73 x 52 x 7cm
- LV+ : 85 x 52 x 7cm

2 | INTERFACE



INTERFACE

Standard configuration :

Totem and electrical cabinet

23" screen | S9010 Software

Qwerty keyboard, touchpad, holder

INL

DIMENSIONS

- Height : 180 cm
- Floor area : 35 x 40 cm

3 | OPTIONS

BRAKE TESTER ADD-ONS

	REF.
XS frame	<input type="checkbox"/> XSF
Winter tires rollers	<input type="checkbox"/> WTR
Soft starter	<input type="checkbox"/> SST
Exit assistance	<input type="checkbox"/> BLO
4WD mode	<input type="checkbox"/> FWD
Pedometer	<input type="checkbox"/> PED
Covering plates	<input type="checkbox"/> COV
Weighing sensor (if no suspension module)	<input type="checkbox"/> WEI
230V 3PH + EP power supply (4kW motor only)	<input type="checkbox"/> 230

CIVIL ENGINEERING ADD-ONS (non CAPELEC brake tester)

	REF.
MU civil engineering adapter (232 x 18 x 28cm)	<input type="checkbox"/> CV1
MA civil engineering adapter (232 x 36 x 28cm)	<input type="checkbox"/> CV2

SUSPENSION TESTER ADD-ONS

	REF.
230V 3PH + EP power supply (3kW motor only)	<input type="checkbox"/> 230

INTERFACE ADD-ONS

	REF.
23" touchscreen	<input type="checkbox"/> 23T
27" screen	<input type="checkbox"/> 27N
27" touchscreen	<input type="checkbox"/> 27T
Azerty keyboard, touchpad, holder	<input type="checkbox"/> AZR
IR remote control	<input type="checkbox"/> RIR
HF remote control	<input type="checkbox"/> RGF
Customised software	<input type="checkbox"/> NSO

HEAVY GOODS VEHICLES AND MIXED TEST LANE

EQUIPMENT SETTINGS

- 1 | Select module(s): braking, suspension, slipping
- 2 | Add an interface: screen and remote control
- 3 | Select options

1 | MODULES



- ✓ Braking module
- Must be associated to an Interface.

Creation :
Use the appropriate frame.
See civil engineering add-ons.

Replacement :
Use the appropriate adapter.
See civil engineering add-ons.

BRAKE TESTER

Standard configuration :

Galvanised steel frame

230V or 400V 3PH + N + EP power supply

15kW motor

Twin-chain transmission

Steel rollers | Epoxy coating

Soft starter

Exit assistance

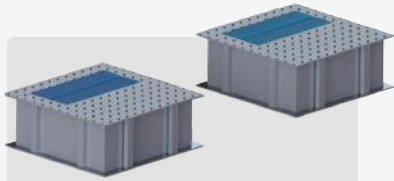
CAP9110-BRA

SPECIFICATIONS

- Roller speed : 2,5km/h
- Axle maximum load : 18t
- Maximum force : 40 000 daN
- Motor frequency : 50-60Hz
- Path : 800-2800mm

DIMENSIONS

- 1350 x 800 x 570mm (x2)



- ✓ Suspension module
- Must be associated to an Interface.

SUSPENSION TESTER

Standard configuration :

For Lv test lane

Painted steel frame

230V or 400V 3PH + EP power supply

3kW motor

CAP91XX-OS400V

SPECIFICATIONS

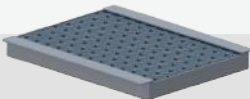
- Axle in test weight (Max) : 3t
- Max. load per axle : 13t
- Three phased power supply
- Motor frequency : 50-60Hz

DIMENSIONS

- 870 x 850 x 330mm (x2)

TESTING METHOD

EUSAMA



- ✓ Slipping module
- Must be associated to an Interface.

SIDE SLIP TESTER

Standard configuration :

Painted steel frame

CAP91XX-SS

SPECIFICATIONS

- Maximum load per wheel : 18t
- Deflection : +/- 20m/km

DIMENSIONS

- 1020 x 780 x 95mm

2 | INTERFACE



INTERFACE

Standard configuration :

Totem and electrical cabinet

23" screen | S9110 Software

Qwerty keyboard, touchpad, holder

INH

DIMENSIONS

- Height : 180 cm
- Floor area : 35 x 40 cm

3 | OPTIONS

BRAKE TESTER ADD-ONS

	REF.
230V 3PH + EP power supply	<input type="checkbox"/> 230V
Covering plates	<input type="checkbox"/> COV
Dual speed (2,5km/h 5km/h)	<input type="checkbox"/> DSP
Pressure sensor	<input type="checkbox"/> PRS

CIVIL ENGINEERING ADD-ONS

1 frame for civil engineering (brake tester creation without pit)	<input type="checkbox"/> 1FCV
2 frames for civil engineering (brake tester creation with pit)	<input type="checkbox"/> 2FCV
MA civil engineering adapter (brake tester replacement)	<input type="checkbox"/> CV1
MU civil engineering adapter (brake tester replacement)	<input type="checkbox"/> CV2
Load simulator	<input type="checkbox"/> CAP91XX-SDC

SECURITY OPTIONS

Side barrier	<input type="checkbox"/> SIB
Safety set (required with options below)	<input type="checkbox"/> SEC
Warning light for barrier	<input type="checkbox"/> WLB
Optical barrier for pit	<input type="checkbox"/> OPB
Secure remote control with emergency stop	<input type="checkbox"/> SRC

SUSPENSION TESTER ADD-ONS

230V 3PH + EP power supply	<input type="checkbox"/> 230
----------------------------	------------------------------

INTERFACE ADD-ONS

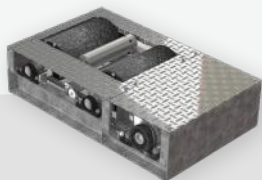
23" touchscreen	<input type="checkbox"/> 23T
27" screen	<input type="checkbox"/> 27N
27" touchscreen	<input type="checkbox"/> 27T
HF remote control	<input type="checkbox"/> RGF
Totem alone	<input type="checkbox"/> TOT
Azerty keyboard, touchpad, holder	<input type="checkbox"/> AZR
Customised software	<input type="checkbox"/> NSO

2, 3 AND 4 WHEELS BRAKE TESTERS

EQUIPMENT SETTINGS

- 1 | Select a module : one or more wheels
- 2 | Add an interface: screen and remote control
- 3 | Select options

1 | MODULES



✓ Braking module
Must be associated to an Interface.

MOTORBIKES BRAKE TESTER

Standard configuration :

Galvanised steel frame

Aluminium rollers | Epoxy coating

400V 3PH + N + EP power supply

2,2kW motor

Exit assistance

Weighing sensor

CAP9410-BRA

SPECIFICATIONS

- Roller speed : 5km/h
- Maximum load : 1t
- Maximum force : 300 daN

DIMENSIONS

- 102 x 62 x 26cm



✓ Braking module
Must be associated to an Interface.

MOTORBIKES, TRICYCLES AND QUADS BRAKE TESTER

Standard configuration :

Galvanised steel frame

Aluminium rollers | Epoxy

Alimentation électrique 400V 3PH + N + EP

2 x 2,2kW motor

Exit assistance

Weighing sensor

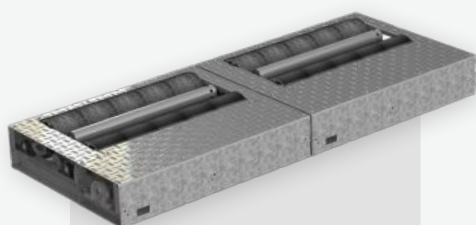
CAP9420-BRA

SPECIFICATIONS

- Roller speed : 5km/h
- Max. load per axle : 2t
- Maximum force : 300 daN per wheel

DIMENSIONS

- 2 wheels module : 102 x 62 x 26cm
- 3 wheels module : 102 x 126 x 26cm



✓ Braking module
Must be associated to an Interface.

MOTORBIKES, TRICYCLES, QUADS AND LIGHT VEHICLES BRAKE TESTER

Standard configuration :

Galvanised steel frame

Aluminium rollers | Epoxy

400V 3PH + N + EP power supply

2 x 2,2kW motor

Exit assistance

Weighing sensor

CAP9430-BRA

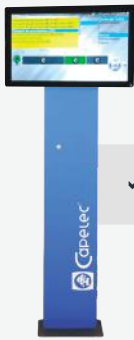
SPECIFICATIONS

- Roller speed : 5km/h
- Max. load per axle : 2t
- Maximum force : 300 daN per wheel

DIMENSIONS

- 3 wheels module : 102 x 126 x 26cm (x2)

2 | INTERFACE



INTERFACE

Standard configuration :

23' screen | S9410 Software

Qwerty keyboard, touchpad, holder

INM

DIMENSIONS

• 370 x 810 x 440 cm

3 | OPTIONS

BRAKE TESTER ADD-ONS

	REF.
230V 3PH + EP power supply	<input type="checkbox"/> 230V
Pedometer	<input type="checkbox"/> PED
Manometer	<input type="checkbox"/> MANO
Clamp and command	<input type="checkbox"/> CC

SECURITY OPTIONS

Side barrier	<input type="checkbox"/> SIB
Optical emergency stop for rollers	<input type="checkbox"/> ORS

INTERFACE ADD-ONS

23' touchscreen	<input type="checkbox"/> 23T
27' screen	<input type="checkbox"/> 27N
27' touchscreen	<input type="checkbox"/> 27T
Azerty keyboard, touchpad, holder	<input type="checkbox"/> AZR
HF remote control	<input type="checkbox"/> RGF
Customised software	<input type="checkbox"/> NSO

LV LV+ OPTIONS



Cover plates

Two wheels technical inspection adaptor
Steel

For CAP9010 LV series

PRO04092

For CAP9020 LV+ series

PRO04068



Pedometer

Foot-pedal sensor
Wireless BT connection
CAP90x0 brake testers series

CAP9520



Free rollers set

2 sets of 5 rollers
Transport handle | Aluminium frame

CAP9000-RF



HF remote control

USB | HF receiver
Compatible with software for S9000 & S9600 series

CAP1000-RCHF-USB



IR remote control

USB | infrared receiver
Compatible with software for S9000 & S9600 series

CAP1000-RCIR-USB

HGV OPTIONS



Load simulator

Push 18T | Remote control and receiver
Set of hoses | Galvanized steel cradles x2
Hydraulic power unit | 400V

CAP91XX-SDC



Pressure sensors

Pneumatic system pressure measurement
Sensors and communication module

CAP01319



Free rollers

2 sets of 3 rollers
Maximum load : 16 t
Protective cover

CAP9682



Cover plate

Set of 4
Steel

PRO04016



PC keyboard support

PRO03029



Video platform checking ground connections

Two cameras | Two LED strips
S9230 software | Protective plate
Touch screen

CAP9230



Remote control with emergency stop

Charging base
Secure 433-434 MHz transmission
64 channels

CAP91XX-SAU



Repeater Totem

Column + 27" screen
Height 1.80m

CAP91XX-OTRL



Column for repeater screen

Column only
Height 1.80m
For 27" screen

CAP00793



Column for repeater screen

Column only
Height 2.40m
For 22"-27" screen

PRO04288



Repeater screen

Extra 32" display non-touch screen

PRO04493



Repeater screen

Extra 27" display non-touch screen

CAP01183



Wall mount for screen

Max. load 25kg

PRO04176



Video connection for repeater screen

DisplayPort-HDMI adapter cable
HDMI-RJ45 adapter
30 m RJ45 cable

SSE01378

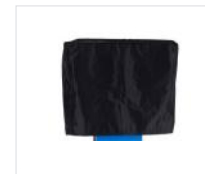
INTERFACE OPTIONS



Printer

Inkjet printer | A4 size

PRO03790



PC screen protective cover

Polyester fabrics | Black

PRO02686



Repeater screen

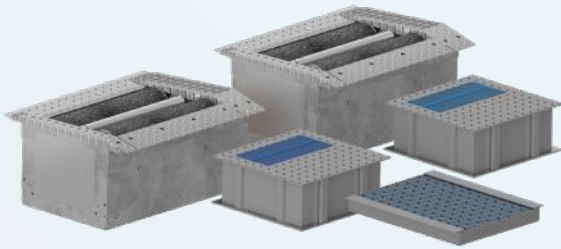
Extra 22" display screen

CAP00941

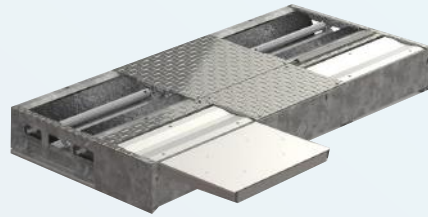
TEST LANES COMBINATIONS

SCALABLE EQUIPMENT

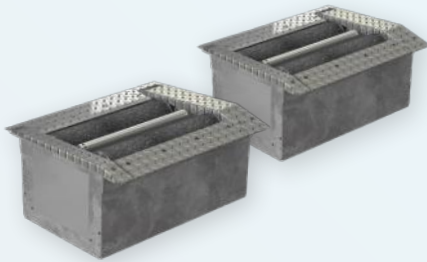
Test lanes can be combined to control a wide range of vehicles on the same line.



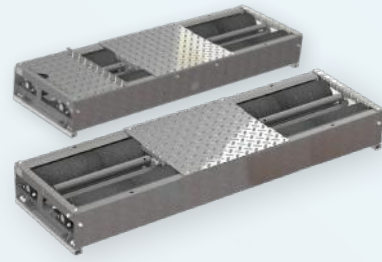
CAP9110
BRAKE SUSPENSION SIDE SLIP TESTER
HDV



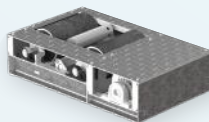
CAP9010 - CAP9020
BRAKE SUSPENSION SIDE SLIP TESTER
Light and extra large vehicles



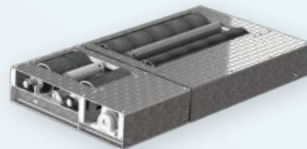
CAP9110
BRAKE TESTER
HDV



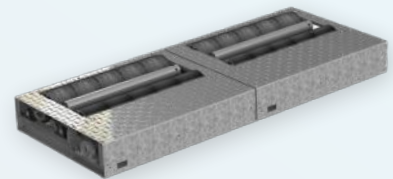
CAP9010 - CAP9020
BRAKE TESTER WITH PLATES / WITHOUT PLATES
Light and extra large vehicles, motorcycles
Light and extra large vehicles



CAP9410
BRAKE TESTER
Motorcycles


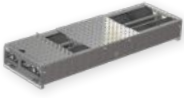


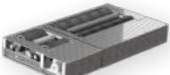



CAP9420
BRAKE TESTER
Motorcycles, tricycles, quads



CAP9430
BRAKE TESTER
Motorcycles, tricycles, quads, light
Vehicles

VEHICLE CATEGORIES

	L1e	L2e	L3e	L4e	L5e	L6e	L7e	LV	HGV
 <p>CAP010 CAP9020 SANS PLAQUES</p>								✓	
 <p>CAP010 CAP9020 AVEC PLAQUES</p>	✓		✓					✓	
 <p>CAP9110</p>									✓
 <p>CAP9410</p>	✓		✓						
 <p>CAP9420</p>	✓	✓	✓	✓	✓	✓	✓		
 <p>CAP9430</p>	✓	✓	✓	✓	✓	✓	✓	✓	

LV LV+ PLAY DETECTORS



LV LV+ PLAY DETECTOR

Electro-hydraulic operation

Maximum axle load/wheel load: 3 tons / 1,5 tons

Maximum working pressure: 175 bar

Longitudinal/transversal force: 8 kN

Longitudinal/transversal movement: 50 mm

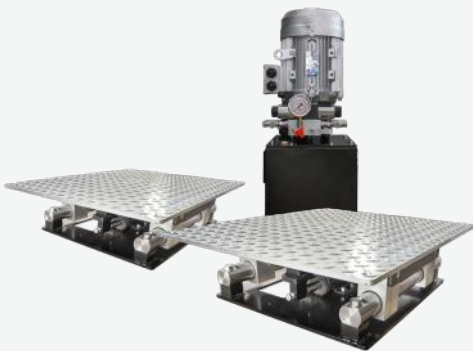
Remote control

SPECIFICATIONS

- Movement speed: 60 mm/sec
- Cable length: 6,5 m
- Dimensions platform SM: 740 x 580 x 60 mm
- Dimensions platform FM: 690 x 700 x 60 mm
- Motor: 1,5 kW, 3PH+N+E 400V / 50Hz / 16A slow

Play detector (400V Tri)	CAP9200-LEH
Play detector (230V Tri)	CAP9201-LEH
Set of hoses	PRO03504
Frame	PRO02799

HGV PLAY DETECTORS



HGV PLAY DETECTOR

Compatible with existing civil engineering

Compact frame or replacement adapter

Electro-hydraulic operation

Maximum load per wheel : 10 tons (passage)

Flush to the slab galvanized steel plates

Wireless remote control

COMPLETE SET :

- ✓ CAP9210 module
- ✓ PRO04371 creation frame
- ✓ PRO04395 set of hoses
- ✓ Wireless remote control

SPECIFICATIONS

- Power supply 400V
- Plate dimensions : 800 x 690 mm
- Frame dimensions : 212 x 550 x 600 mm
- Force per plate : 30 KN
- Movements : Longitudinal | Transversal | Diagonal
- Cylinder stroke : 100 mm
- Displacement speed : 70 mm/second
- Remote control: Wireless with LED light
- Motor : 5,5 kW, 3 phases +N +Earth 400v/50hz
- Coating : Hot dipped galvanized steel

Complete set	CAP9210-F
Play detector module	CAP9210
Creation frame	PRO04371
Set of hoses	PRO04395

DECELEROMETER



DECELEROMETER

Brake force tester

RS232 and wireless ports | LCD screen

PC report

S9500 software

3D sensor

COMPLETE SET

- ✓ CAP9500 module
- ✓ Suction pad
- ✓ Protective storage case
- ✓ Cables

Module alone	CAP9500EX-E
Complete set	CAP9500EX-B

OPTIONS

COMMUNICATION



Thermal printer | Wireless BT
Battery and charger

RS232 connection

Wireless Bluetooth connection

ERGONOMY



Manometer
Hand pressure gauge

CAP9500A-CFM



Pedometer
Foot-pedal pressure gauge

CAP9500A-CFP



Universal crowbar
Motorbike
Fitting for handlebars

SSE01044



CONFIGURABLE AND FAST

The CAP9610 adapts to your needs:

- Totem or tablet interface
- Connectable or standalone version
- Built-in or floor-mounted, fixed or mobile
- With podium or footrest

SAFE

- 4-module podium (optional)
- Foot-activated start-up
- Centering rollers and locking plate

FAST

- Test performed in 30 seconds
- Intuitive and optimized procedure

PORTABLE

- Frame with handle
- Quick disassembly into compact parts
- Delivered in 2 bags

ENCOMBREMENT

Frame	400 x 401 x 141 mm
Ramp set	827 x 342 x 99 mm



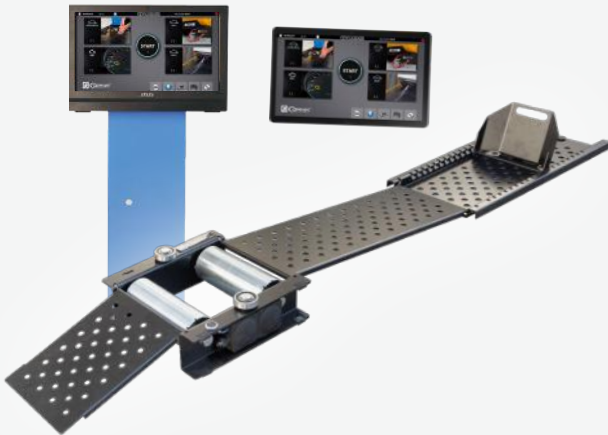
Integrated or freestanding



Safety platform

OTHER TESTERS

NEW



SPEED-MEASURING SYSTEM

ROLLER SPEED TESTER | L-CATEGORY VEHICLES

Transportable | Built-in

Access and exit ramps

Totem or 10" tablet | Win Os

Adjustable safety shoe | Refocusing rollers

Frame-mounted control knob

S9610 software | User-friendly interface

Optional footrest and podium

Totem	CAP9610FR-T
Tablet	CAP9610XX-T



TINT GLASS METER

CAP5600 series

Measurement of the tint of the glass

Light transmittance and light reflectance tester

Long lasting battery | Suction pad

LCD display | Case

CAP5600



SONOMETER

DIGITAL SOUND LEVEL METER WITH CALIBRATOR

LCD color display | Class 2

USB connection

Power supply or battery

Spectrum analyzer

CAP5700EX-SC



NOISE MEASURING SYSTEM

SOUND LEVEL METER | CALIBRATOR | ACCESSORIES

Remote microphone | LCD color display | Class 2

USB connection

Power supply or battery | Spectrum analyzer

Tripod for microphone positioning

COMPLETE SET:

- ✓ Sonometer
- ✓ Calibrator
- ✓ Positioning tripod
- ✓ 5m extension cable
- ✓ Magnetic mounting for totem pole

CAP5700EX-SCA



General Terms Conditions of Sale

Prices

- All prices are net in EUR. The prices applied are those published in the International Price List valid on the date of invoicing. Prices are exclusive of any applicable sales tax, value added tax or assimilated taxes, fees, import duties or other duties, insurance, transport and handling charges.

Payment

- Payment terms shall be discussed between CAPELEC and its customer at the moment of the offer writing. Invoices not paid within the due date shall thereafter bear overdue charges at the rate of 2% per month on the unpaid balance until paid in full. If in CAPELEC's opinion the purchaser's financial situation does not justify performance, production or shipment on the terms of payment specified, CAPELEC may require full or partial payment in advance before shipment. CAPELEC may discontinue or delay continuance of performance or production if the purchaser fails to pay any moneys due. - If an unpaid amount is deemed uncollectable and transferred to a third party for the purpose of collection, any fees incurred are the responsibility of the purchaser and must be paid in full to CAPELEC or its assigned agent.

- The amount of any present or future taxes applicable to the sale of products or services shall be added to the price and be paid by the purchaser unless the purchaser provides CAPELEC with a valid exemption certificate acceptable to CAPELEC and the appropriate tax authority.

Title to Goods and Risk of Loss

- All prices are ex works (EXW Montpelier, France; ICC INCOTERM 2000) unless otherwise agreed in writing. Title and risk of loss for all products shall pass to the purchaser upon delivery by CAPELEC to a freight forwarder or purchaser's designate, regardless of shipping terms, method of payment or transport cost.

Transit Damage Claims

- Ex works is our term of sale. Therefore, once the goods have been loaded for shipping, they become the responsibility of the purchaser.

- It is the responsibility of the purchaser to receive the entire shipment as tendere-

red and file a claim with the carrier if the shipment or any part thereof is missing or damaged upon delivery. If there is any loss or damage at the time of delivery, it is essential to make the appropriate statement on the delivery receipt.

- Prompt inspection is of essence. Any concealed damage should be reported to the delivering carrier within 15 days of receipt of the shipment. Prompt filing of the claim with all necessary documents is required for fast settlement. All claims must be accompanied by the following documents:

- Original paid freight bill - Certified copy of original bill of lading - Duplicate of invoice covering shipment - Duplicate of destination inspection report - Duplicate of delivery receipt noting shortage or damage.

Acceptance

- Goods and services offered or quoted for are subject to availability. Orders are subject to acceptance by CAPELEC.

Cancellation

- Modifications and add-ons to orders can only be accepted within the next working day after the original time of order placement. Thereafter add-ons will be considered as new orders. Orders cannot be cancelled by the purchaser except upon terms that will fully compensate CAPELEC against loss or by CAPELEC's prior written agreement.

Returns

- Any products sold by CAPELEC may be returned only in accordance with the warranty provisions applicable to the product concerned. Before returning any product for whatever reason, the purchaser must obtain CAPELEC's prior written approval and instructions. Return and external fees are at the purchaser's expenses.

Force Majeure

- CAPELEC shall not be liable for any loss, damage, delay, changes in shipment schedules or failure to deliver caused by accident, fire, earthquake, flood, meteorological exigency, animal or human disease, strike, lock-out, labour disputes, industrial action, riot, hooliganism, civil commotion, insurrection, revolution, terrorist acts, war whether declared or not, the elements, natural catastrophe, boycott, embargo, mutiny, failure of carriers, unavailability of transport facilities, exchange rates, fuel prices, power failures, government requi-

rements or prohibitions, import or export restrictions, law enforcement, computer virus, software failure, acts of God or public enemy, prior orders from customers or limitations of CAPELEC, its suppliers' or its subcontractors' production, marketing activities or services, or any other causes or contingencies beyond CAPELEC's control. CAPELEC shall in no event be liable for direct, indirect, ordinary or extraordinary, special, incidental damages or consequential loss including without limitation lost profits or loss of use or production or capital, whether based on contract, tort or any other legal theory.

Liability

- CAPELEC shall in no event be liable for direct, indirect, ordinary or extraordinary, special, incidental damages or consequential loss including without limitation lost profits or loss of use or production or capital, whether based on contract, tort or any other legal theory. The remedies of the purchaser set forth herein are exclusive and the liability of CAPELEC with respect to any contract, or anything done in connection therewith such as the performance of breach hereof, or from the manufacture, sale, delivery, resale, installation or use of any products whether arising out to contract, negligence, strict tort, or under any warranty or otherwise, shall not exceed the purchase price of the products upon which liability is based.

Severability

- Each portion and provision of the present terms is severable and if any provision is held invalid or unenforceable the remainder shall nevertheless remain valid and in full force and effect.

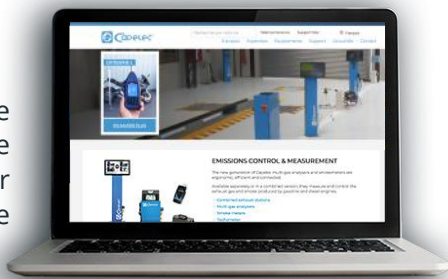
Unique ecosystem identifier


The key identifier FR002721_05KUZN attesting to the registration in EEE sector producers, in application of article L.541-10-13 of the Environment Code, has been attributed by ADEME to CAPELEC (381 622 976 00037). This identifier attests to its compliance with its obligation to record in the register of Electrical and Electronic Equipment producers and the completion of its marketing declarations to ecosystem.

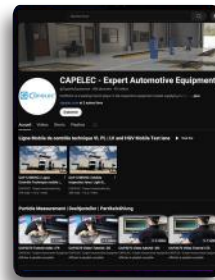
Jurisdiction

- All sales, agreements and contracts shall be governed by and construed in accordance with the laws of France.

Find out more
about complete
range on our
website



 www.capelec.com



Follow us to stay
informed: news,
videos, trade shows...





 **FRANCE**

Capelec SAS
1130 rue des Marels Parc Euréka
34000 Montpellier FRANCE
+33 (0)4 67 156 156
contact@capelec.com

 **GERMANY**

Capelec Deutschland GmbH
Gewerbstraße 8
87787 Wolfertschwenden GERMANY
(+49) 08334/98 95 323
capelec.deutschland@capelec.de

 **INDIA**

Capelec India PVT. Ltd.
Mez & 1st Floor, A-83,
Okhla Industrial Area, Ph-II,
New Delhi - 110020 INDIA
+91-9654117338
capelec.india@capelec.com

 **FINLAND**

Pegasor Oy
Hatanpään valtatie 34 C
33100 Tampere FINLAND
www.pegasor.fi

 www.capelec.com

