



1288 EAGLE CLIFF ROAD
Bowen Island



Tim Rhodes
REALTOR®







Primary Bedroom



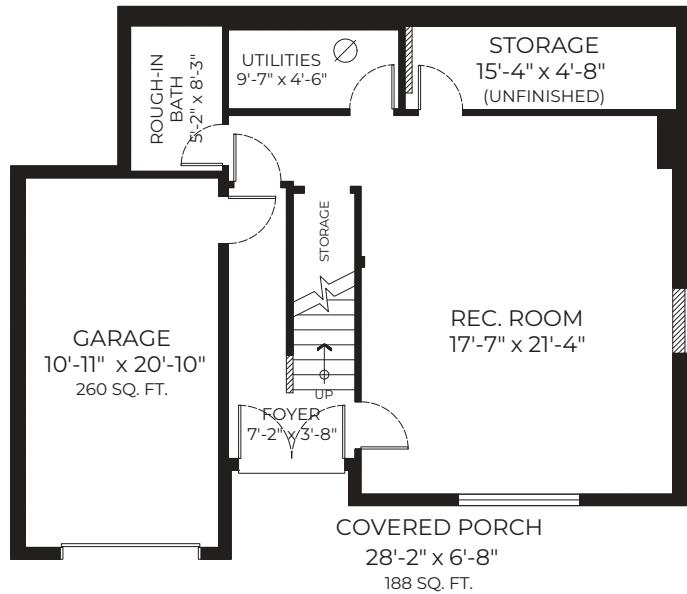
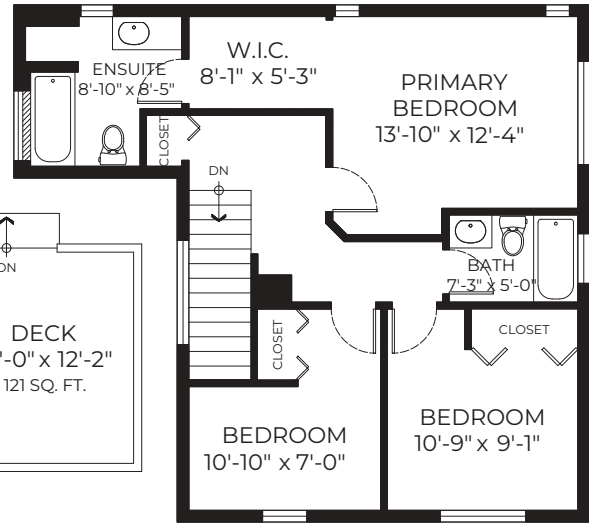
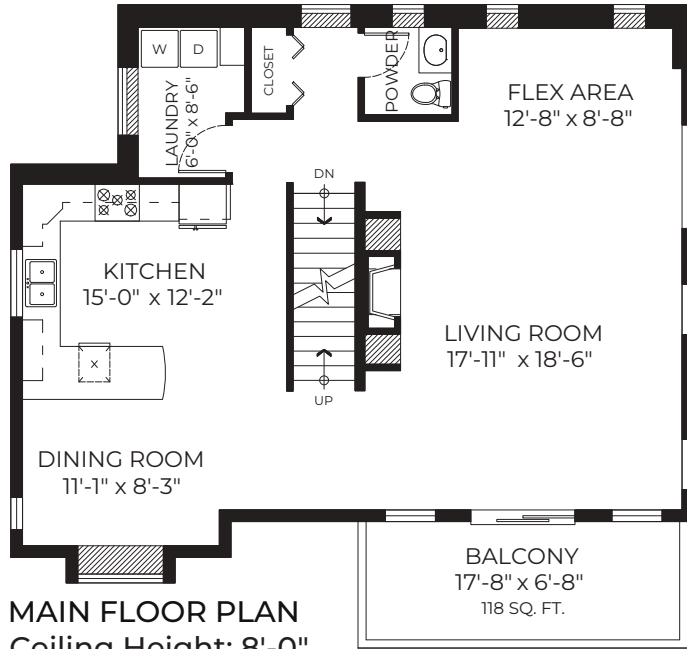
Recreation Room







1288 EAGLE CLIFF ROAD | Bowen Island | 2694 SF | 3 Beds 3 Baths | Rec Rm | 0.25 Acres



Upper Floor: 770 SQ. FT.
Main Floor: 1096 SQ. FT.
Lower Floor: 797 SQ. FT.
Total: 2663 SQ. FT.

Deck: 121 SQ. FT.
Balcony: 118 SQ. FT.
Garage: 260 SQ. FT.
Porch: 188 SQ. FT.



MEASUREMENTS ARE APPROXIMATE AND MAY NOT BE TO SCALE.
THE FLOOR PLAN ILLUSTRATION IS NOT SUITABLE FOR
CONSTRUCTION/ARCHITECTURAL PURPOSES. E&O INSURED.

Although this information has been received from sources deemed reliable, we assume no responsibility for its accuracy, and without offering advice, make this submission to prior sale or lease, change in price or terms, and withdrawal without notice.



Tim Rhodes
REALTOR®

604-341-9488
tim@rhodesonbowen.com
RHODES ON BOWEN REAL ESTATE

