

# H.J. Oldenkamp Co.

Building Products & Relationships for the Future



## Multi-family Product Guide

# H.J. OLDENKAMP CO.

## About us

Thank you for taking the time to learn about H.J. Oldenkamp Company. With almost 80 years of experience in the Michigan market and extending our reach into northern Ohio and Indiana, we pride ourselves on being a trusted supplier of kitchen and bath brand name products. Our legacy is built on a foundation of exceptional service and dedication to our customers.

## What We Do

At H.J. Oldenkamp Company, we understand that while cabinetry can be purchased almost anywhere, it is the quality of service that distinguishes good suppliers from great ones. Our team, with over 40 years of combined cabinet experience, is committed to ensuring your projects run smoothly and efficiently. We acknowledge that mistakes can happen, but it is our unwavering commitment to learning from these experiences and providing effective solutions that sets us apart.

We offer a broad range of products from leading manufacturers to meet your design and budgetary needs. Whether you're seeking high-end designs or entry-level options, we have the perfect products for your projects.

Our service level can be customized to your specific requirements, offering:

- Budgetary Estimates: Providing accurate estimates based on your plans.
- Jobsite Measurement: Confirming layouts and functionality to ensure precision.
- Truckload Pricing: Tailgate delivery for bulk orders.
- In-Unit Delivery: Direct delivery to units on the 1st or 2nd floor (without elevator access).
- Countertop Coordination: Assistance with selecting and coordinating laminate, solid surface, or quartz countertops.

Our team is here to help you find the right products to fit your design and budget, ensuring a seamless experience from start to finish. We look forward to working with you and demonstrating the H.J. Oldenkamp Company difference.

# MEET THE TEAM

## About us

Since 1946, the H. J. Oldenkamp Company has been supplying nationally branded interior building products to the industry's commercial and residential trade professionals. Over this time, we have grown to be a leader interior building products distributor in the Midwest and South Central USA.

## Commercial Sales Team

### **Rob McLean – New Construction/Multi-Unit Manager**

586-980-7143

[rmclean@oldenkamp.com](mailto:rmclean@oldenkamp.com)

Territories Covered: SE Michigan and NW Ohio

### **Jennifer Farrell – Project Design Specialist**

586-497-7529

[jfarrell@oldenkamp.com](mailto:jfarrell@oldenkamp.com)

### **Scott Korpala – Residential Territory Manager**

248-520-1478

[skorpala@oldenkamp.com](mailto:skorpala@oldenkamp.com)

Territories Covered: Wayne, Washtenaw, Monroe, NW Ohio

### **Christina Haven – Customer Service Project Specialist**

586-242-1582

[chaven@oldenkamp.com](mailto:chaven@oldenkamp.com)

# TABLE OF CONTENT

## H.J. Oldenkamp

---

- [About H.J. Oldenkamp](#) - 01
- [Meet the Team](#) - 02

## [Cabinets](#)

---

- [Woodstar](#) - 05
- [Sauder](#) - 07
- [Saco](#) - 09
- [Design Mode](#) - 11
- [Mantra](#) - 13

## [Surfacing](#)

---

- [Corian Quartz](#) - 17
- [Corian Solid Surface](#) - 19
- [Mermaid Wetwalls](#) - 21

# CABINET BRANDS

## Woodstar

05

Quality Woodstar Cabinetry – where craftsmanship meets innovation. At H.J. Oldenkamp Co., we offer cabinets known for durability, stylish designs, and superior functionality.

## Sauder

07

Discover Sauder Cabinets at H.J. Oldenkamp Co. Renowned for their quality craftsmanship and innovative designs, Sauder Cabinets offer both functionality and style.

## Saco

09

Discover Saco Cabinets at H.J. Oldenkamp Co. Renowned for their quality craftsmanship and elegant designs, Saco Cabinets provide durable and stylish solutions for both residential and commercial spaces.

## Design Mode

11

Design Mode Cabinets – the epitome of modern elegance and functionality. At H.J. Oldenkamp Co., we offer Design Mode Cabinets, celebrated for their sleek designs, superior craftsmanship, and versatile solutions.

## Mantra

13

Mantra Cabinets is engineered for commercial environments, offering high-quality, style-forward cabinetry with dependable lead times and consistent availability.



The QualityCabinets™ WoodStar® Series sets the standard for attractive, durable cabinetry at an affordable price. The WoodStar® Series combines popular styles with practical value, delivering kitchen and bath options for every design idea, at any design budget.

### Key Product Information:

- **Multifamily / Builder Price Level:** \$\$
- **Door and Finish Options:** Up to 5 paint and stain options, 4 available door styles
- **Lead time / Stock Availability:** Maddie White is stocked in Royal Oak, 4 weeks for non-stock
- **Ordering / Shipping Options:** No minimum order size, Direct Truckload available for large projects
- **Warranty:** 3-year limited warranty
- **Certifications:** KCMA certified for quality and durability

### Cabinet Construction Features:

- Cabinet Front: 1½" wide and ¾" thick hardwood painted/stained face frame
- Cabinet Box: 3/8 Engineered wood, I-beam construction
- Doors: Soft-close
- Standard Drawer: Engineered wood drawer box; ¾ extension, Side-mounted drawer glide
- Upgraded Drawer: Hardwood Dovetail drawer box; Full extension, under mount soft-close drawer glide

### Use Cases:

- **Builder Base Model:** Available in Kitchen at a time, Maddie White is stocked locally.
- **Flip Remodel:** Full or Partial overlay shaker with quality paint, quick lead time, Maddie White stock availability
- **Multifamily Remodel:** No minimum order size, cabinets stored at HJO and delivered to unit at tenant move out
- **Multifamily New Build:** Truckload direct or to HJO and shipped in phases
- **Commercial Spaces:** Suitable for office break rooms, reception areas, and other commercial applications requiring quality cabinetry.

### Product Links:

- **Catalogs:** [Download Catalog](#)
- **Stocked Doors:** [Maddie White Door](#)



## KITTERY (Full Overlay - Shaker)

Boardwalk Stain



Steel Grey Stain



Twilight Stain



Cotton Paint



## MADDIE (Laminate Wrap - Shaker)

White Laminate



Grey Laminate



## DERBY (Partial Overlay - Shaker)

Boardwalk Stain



Cotton Paint



Pecan Stain



Shale Paint



Steel Grey Stain



## SEACREST (Partial Overlay – Decorative Rail)

Boardwalk Stain



Cotton Paint



Pecan Stain



Twilight Stain





The Sauder Cabinet Series sets the standard for attractive, durable cabinetry at an affordable price. The Sauder Cabinet Series combines popular styles with practical value, delivering kitchen and bath options for every design idea, at any design budget.

#### Key Product Information:

- **Multifamily / Builder Price Level:** \$\$
- **Door and Finish Options:** Up to 5 paint and stain options, 4 available door styles
- **Lead time:** 4-5 Week from time of order
- **Ordering / Shipping Options:** No minimum order size, Direct Truckload available for large projects
- **Warranty:** 3-year limited warranty
- **Certifications:** KCMA certified for quality and durability

#### Cabinet Construction Features:

- **Cabinet Box:** 5/8" Furniture Board. **Frameless Full Access Construction.** All Edges Sealed
- **Interior Finish:** White with High Quality Laminate
- **Doors:** Soft-close
- **Standard Drawer:** Polypropylene wrapped mitrefold drawer box. 1/2" Thick Commercial Grade. 3/4 extension undermount soft close .
- **Upgraded Drawer:** Polypropylene wrapped mitrefold drawer box. 1/2" Thick Commercial Grade. Full Extension Soft Close Drawer Slide.

#### Use Cases:

- **Multifamily Remodel:** 150 cabinet minimum, cabinets stored at HJO and delivered to unit at tenant move-out.
- **Multifamily New Build:** Truckload direct or to HJO and shipped in phases.

#### Product Links:

- **Website:** [Sauder Cabinets](#)
- **Catalogs:** [Download Catalog](#)

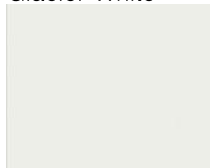


## EVOLVE COLLECTION



## STANDARD FINISH OPTIONS

Glacier White



Modern Grey



Slate



Saylor Blue



## PREMIUM WOODGRAIN FINISH OPTIONS

Driftwood



Ashton Oak



Hudson Oak



Graphite



## FORERUNNER COLLECTION



## DOOR OPTIONS

SHAKER STYLE

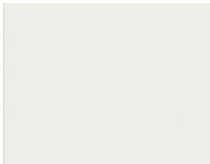


SLAB STYLE

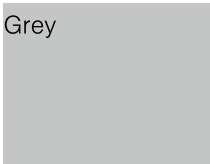


## FINISH OPTIONS

Glacier White



Modern Grey



Slate





The Saco™ Series sets the standard for attractive, durable cabinetry at an affordable price. The Saco™ Series combines popular styles with practical value, delivering kitchen and bath options for every design idea, at any design budget.

### Key Product Information

- **Multifamily / Builder Price Level:** \$
- **Door and Finish Options:** Up to 2 paint and 6 stain options, 4 available door styles
- Thermofoil White and Grey Shaker Full Overlay
- Powder Coated Shaker Door (3 Colors)
- Soft Close Hinge Standard
- Plywood Construction available 3/8 Laminated Plywood with option for 1/2" Plywood
- **Lead time:** 4-5 Week from time of order
- **Ordering / Shipping Options:** 150 cabinet minimum, Direct Truckload available for large projects
- **Warranty:** 1-year limited warranty
- **Certifications:** KCMA certified for quality and durability

### Cabinet Construction Features

- **Cabinet Front:** 1½" wide and ¾" thick hardwood painted/stained face frame
- **Cabinet Box:** 3/8 Engineered Wood Side Panels and floor board
- **Doors:** Soft-close six way hinges
- **Standard Drawer:** Hardwood dovetail drawer box; ¾ extension, Side-mounted drawer glide
- **Upgraded Drawer:** Hardwood Dovetail drawer box; ¾ extension, under mount soft-close drawer glide

### Use Cases

- **Multifamily Remodel:** Minimum 150 Cabinet order, cabinets stored at HJO and delivered to unit as tenant move out.
- **Multifamily New Build:** Truckload direct or to HJO and shipped in phases.

### Product Links:

- **Website:** [Saco Cabinets](#)
- **Catalogs:** [View Catalog](#)

## Framed Construction



### Acadia Door - Stains & Paints

#### Stains



Light Maple



Natural Ash



Cider



Nutmeg



Verismo



Carmel



Espresso



Espresso Ash



Stone



Pepper

#### Paints



White



Light Gray



Slate Gray



Light Chocolate



Light Chocolate Ash

### TFL - Thermofused Melamine

- Doors, fronts, and backs are 5/8" thick, double-sided TFL slab
- Doors and fronts are finished with 1mm PVC edge banding
- Horizontal grain direction standard on drawer fronts (optional vertical grain, will not be book matched)

- Available in full overlay
- Slab door style only
- Pulls or knobs required
- All finishes are Thermofused Melamine



Asian Night



Verismo



Teak



Cali Ash



Seria



Concrete



Arctic



Shadow

### Thin Shaker - Thermofoil

- Doors and fronts are 3/4" thick, durable vinyl laminate with Light Maple melamine back
- Horizontal grain direction standard on drawer fronts (optional vertical grain, will not be book matched)
- Available in full overlay

- Styles available:
  - Standard shaker
  - Thin shaker
  - Slab
- Pulls or knobs required



Dark Walnut



Medium Walnut



Urban Oak



Slate Gray



Light Gray



Beige



White



The Design Mode Cabinets series combines stylish design, durable construction, and affordability. Ideal for a variety of applications, these cabinets offer a versatile solution for kitchens, bathrooms, and commercial spaces, ensuring both aesthetic appeal and practical value for any budget.

#### Key Product Information:

- **Multifamily / Builder Price Level:** \$\$
- **Door and Finish Options:** Up to 5 paint and stain options, 4 available door styles
- **Lead Time:** 4-5 Week from time of order
- **Ordering / Shipping Options:** No minimum order size, Direct Truckload available for large projects
- **Warranty:** 3-year limited warranty
- **Certifications:** KCMA certified for quality and durability

#### Cabinet Construction Features:

- **Cabinet Front:** 5/8" Engineered, **Furniture Board Full Access Construction.** Doweled and Glued
- **Cabinet Box Interior:** Smooth White PVC. Exterior Sides match face of cabinet.
- **Doors:** Soft-close
- **Standard Drawer:** Dovetail wood drawer box; ¾ extension, Under mounted drawer glide

#### Use Cases:

- **Multifamily Remodel:** 150 Cabinet minimum, cabinets stored at HJO and delivered to units at tenant move-out for seamless upgrades.
- **Multifamily New Build:** Options for truckload direct delivery or phased shipping from HJO to match construction timelines.

#### Product Links:

- **Website:** [Design Mode Cabinets](#)





## THE MAGNOLIA COLLECTION

Cloud



Mist

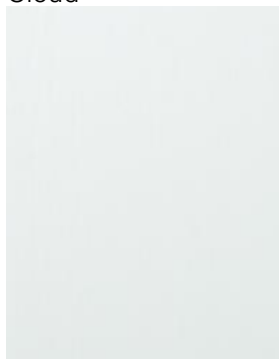


Storm



## THE CALYPSO COLLECTION

Cloud



Mist



Storm





Mantra Cabinets is engineered for commercial environments—offering high-quality, style-forward cabinetry with dependable lead times and consistent availability. Designed for efficiency in multi-family, new construction, and remodel projects, Mantra simplifies cabinet selection while maintaining performance, durability, and visual appeal.

### **Key Product Information:**

**Price Category:** \$–\$\$

**Styles & Finishes:** 3 core door styles (Shaker, Transitional, Raised Panel); available in White, Mineral, and Bark finishes

**Lead Time / Stock:** 2–3 week standard lead time; strong stock position supports time-sensitive projects

**Ordering / Delivery:** No minimums; jobsite or warehouse delivery available for qualified commercial accounts

**Warranty:** Limited Lifetime Warranty

**Certifications:** KCMA certified; CARB II compliant; Indoor Air Quality Certified

### **Cabinet Construction Features:**

**Face Frames:**  $\frac{3}{4}$ " hardwood construction for strength and alignment

**Box Construction:**  $\frac{1}{2}$ " thick sides with fully captured back panel for structural durability

**Doors & Hinges:** Full-overlay doors with soft-close, concealed hinges

**Drawers:** Dovetail hardwood boxes with full-extension, soft-close under mount glides

**Finishing:** Commercial-grade multi-step finish ensures long-lasting performance

### **Ideal Applications:**

**Quick-Turn Construction:** Built for contractors needing dependable, fast-fulfillment cabinetry

**Spec Builds & Value Projects:** Cost-effective solution for mid-range and entry-level construction

**Multi-Family Developments:** Streamlined product line supports consistent, scalable installations

**Design Uniformity:** Core styles and finishes simplify planning across multiple units or properties

### **Product Links:**

**Catalogs:** Download Mantra Cabinets Catalog

**Style & Finish Options:** View Available Door Styles & Finishes





## Classic Door Style

Snow

Bark



## Omni Door Style

Snow

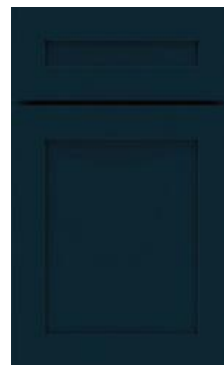
Mineral

Hammock

Graphite

Beachwood


Admiral



## Spectra Door Style

Snow



A modern office interior featuring a curved reception desk with a light-colored, speckled surface. In the background, there is a glass door, a framed abstract artwork, and a potted plant on the left. The word "SURFACING" is overlaid in large, bold, black letters with a white outline.

**SURFACING**

# SURFACING

## Corian Quartz

17

Corian Quartz offers unmatched elegance and durability for commercial projects. Ideal for high-traffic areas like hotels, offices, and retail spaces, it comes in a variety of colors and patterns for endless design possibilities. Its non-porous surface resists stains and bacteria, ensuring easy maintenance and high hygiene standards. Choose Corian Quartz for a timeless, reliable solution that enhances both functionality and appeal.

## Corian Solid Surface

19

Upgrade your commercial spaces with Corian Solid Surface, known for its durability and aesthetic versatility. Ideal for high-traffic areas, its seamless, non-porous design resists stains, moisture, and bacteria. Perfect for healthcare, education, retail, and hospitality projects, Corian offers endless design possibilities with a wide range of colors and patterns. Trust Corian for a surface that combines functionality, beauty, and lasting value.

## Mermaid Wetwalls

21

Mermaid Wetwalls offer a stylish, waterproof alternative to traditional tile for bathroom and shower spaces. Designed for both residential and commercial applications, these panels are easy to install, low-maintenance, and grout-free—making them a hygienic and time-saving solution. Available in a wide range of contemporary finishes, from sleek stone looks to high-gloss colors, Mermaid Wetwalls combine aesthetic appeal with practical performance for modern interiors.





# CORIAN® QUARTZ

Corian Quartz establishes itself as the epitome of stylish, long-lasting countertop solutions, offering a versatile selection suitable for every design vision and budget constraint.

## Key Product Information:

- **Price Level:** \$\$ - \$\$\$
- **Colors:** 55 colors
- **Slab Size:** 3CM or 2CM thick: 63"x120" or 65"x130" based on the color
- **Stock Availability:** All 3CM and select 2CM colors stocked locally in Royal Oak and delivered throughout Michigan weekly. Special orders typically fulfilled within 4 weeks
- **Bulk Orders:** Special orders typically fulfilled within 4 weeks
- **Warranty:** 10-year limited warranty
- **Certifications:** NSF/ANSI 51 certified for food contact; GREENGUARD Gold Certified for indoor air quality

## Product Features:

- **Material Composition:** Approximately 90% from high-quality natural quartz combined with polymer resins
- **Surface Finish:** Factory Glossy finish is standard, with certain Matte and Leathered finish options.
- **Durability:** Resistant to scratches, stains, and heat, ensuring longevity and low maintenance
- **Design Flexibility:** Wide range of colors and patterns, including marble, granular, veined, concrete, and stone aesthetics to match any color scheme

## Use Cases:

- **Residential Kitchen Renovations:** Ideal for creating elegant and functional kitchen spaces with a variety of design options
- **Bathroom Upgrades:** Perfect for vanity tops and shower surrounds, offering a seamless and hygienic surface
- **Commercial Applications:** Suitable for high-traffic areas such as restaurants, hotels, and retail spaces, providing a sophisticated look and durable performance
- **Multifamily Developments:** Versatile and durable for countertops in apartments, condos, and other multifamily units

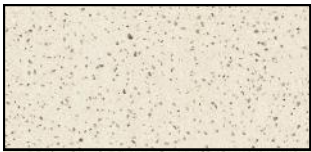
## Product Links:

- **Website:** [Corian Quartz](#) - Full Color Portfolio
- **Catalogs:** Download Catalog

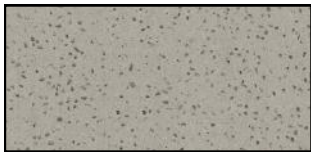
# CORIAN® QUARTZ-PROJECT SPECIALS

## Intro

Quiet White



Hushed Gray

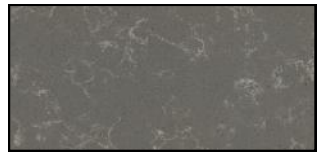


## Group 1

Snow White



Concrete Carrara



## Group 2

Ashen Gray



Venetia Cream



Stratus White



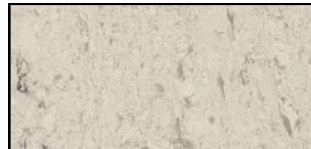
London Abbey



Coarse Carrara



Pearl Stone



## Group 3

Ethereal White



Calacatta Villa



Beige Royal

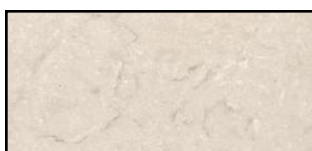


London Royal



## Group 4

Oyster Grigio



Calacatta Novello





# CORIAN® SOLID SURFACE

Corian® Solid Surface sets the standard for versatile, durable, and stylish surfaces at an affordable price. With its wide range of colors and patterns, Corian® Solid Surface provides practical value, delivering design options for every idea and budget.

## Key Product Information:

- **Price Level:** \$ - \$\$
- **Colors:** 104 colors
- **Sheet Size:** 1/2"x30"x144" standard, certain colors available in wide sheet and 1/4" options
- **Price Level:** \$\$
- **Stock Availability:** All 3CM and select 2CM colors stocked locally in Royal Oak and delivered throughout Michigan weekly. Special orders typically fulfilled within 4 weeks
- **Bulk Orders:** Special orders typically fulfilled within 4 weeks
- **Warranty:** 10-year limited warranty
- **Certifications:** NSF/ANSI 51 certified for food contact, GREENGUARD Certified for indoor air quality

## Product Features:

- **Product Features:**
- **Material Composition:** Approximately 2/3 Aluminum Trihydrate (ATH) and 1/3 Acrylic Resin (PMMA)
- **Finish Options:** Fabricator finish to spec: matte, semi-gloss, and high-gloss finishes available
- **Durability:** Non-porous, resistant to stains, scratches, and heat
- **Maintenance:** Easy to clean and repairable, maintaining its appearance over time
- **Applications:** Ideal for kitchen countertops, bathroom vanities, wall cladding, furniture, and more

## Use Cases:

- **Residential Kitchens and Bathrooms:** Customizable designs for countertops and vanities, with seamless integration for sinks and backsplashes.
- **Commercial Spaces:** Durable and hygienic surfaces for healthcare facilities, restaurants, and offices
- **Hospitality Industry:** Stylish and resilient surfaces for hotels, bars, and reception areas
- **Educational Institutions:** Easy-to-maintain surfaces for schools and universities

## Product Links:

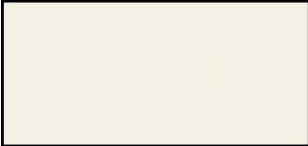
- **Website:** [Corian® Solid Surface](#)
- **Catalogs:** Download Catalog



# CORIAN® SOLID SURFACE

## Group 1

Cameo White



Linen



Glacier White



Silver Gray



## Group 2

Artista Beige



Artista Gray



Antarctica

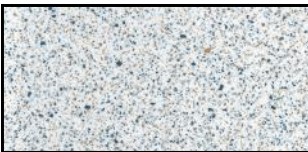


Stonique

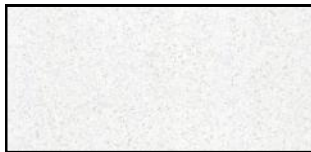


## Group 3

Laguna Terrazzo



Sparkling Granita



Silver Birch



Carbon Concrete



## Group 4

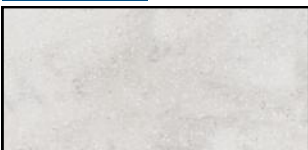
Calacatta Griega



Carrara Lino



Rain Cloud



Carrara Crema



Check out our [store](#) to order samples or contact our customer service team at [orders@oldenkamp.com](mailto:orders@oldenkamp.com) or call (586) 756-0600



# MERMAID WETWALLS

Mermaid WetWalls offer a modern, stylish alternative to traditional tile, combining high-end aesthetics with low-maintenance performance. Designed specifically for wet areas, Mermaid WetWalls are 100% waterproof, grout-free, and easy to install—making them a perfect solution for both residential and commercial applications where cleanliness, durability, and design matter most.

## Key Product Information:

- **Price Level:** \$\$
- **Colors:** 7 curated decorative finishes including stone, tile, woodgrain, and abstract patterns
- **Panel Size:** 94.4"H x 47.2"W x 1/4" thick standard (other trims and sizes available for seamless installs)
- **Stock Availability:** Select styles stocked in Royal Oak with weekly delivery across Michigan
- **Bulk Orders:** Special orders available with typical lead times of 2–3 weeks
- **Warranty:** 15-year domestic warranty
- **Certifications:** GREENGUARD Gold Certified for indoor air quality; CE certified

## Product Features:

- **Material Composition:** High-pressure laminate over a moisture-resistant core (WBP plywood or MDF depending on model)
- **Finish Options:** Gloss and matte finishes available, depending on design
- **Durability:** Grout-free design resists mold, mildew, and bacteria; impact and scratch-resistant surface
- **Maintenance:** Simply wipe clean with non-abrasive cleaners—no grout to scrub or sealants to reapply
- **Applications:** Ideal for shower enclosures, tub surrounds, bathroom walls, and feature walls in hospitality and commercial restrooms

## Use Cases:

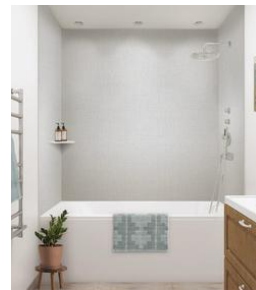
- **Residential Bathrooms:** Provides a luxury tile look without the hassle of grout—ideal for full bathroom renovations or quick upgrades
- **Hospitality Industry:** Stylish, hygienic, and fast to install—perfect for hotels, spas, and resorts seeking consistent quality and appearance
- **Healthcare Facilities:** Hygienic, wipe-clean surfaces meet sanitation standards for patient and staff areas
- **Multi-Family & Senior Living:** Durable and low-maintenance choice for developers and property managers prioritizing quick turnaround and longevity

## Product Links:

- **Design Options:** [Explore Available Finishes](#)



## MULTI-FAMILY PRODUCT GUIDE



### Color Options

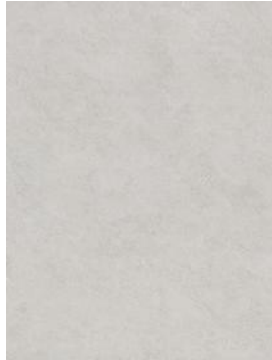
Borghini Radiance



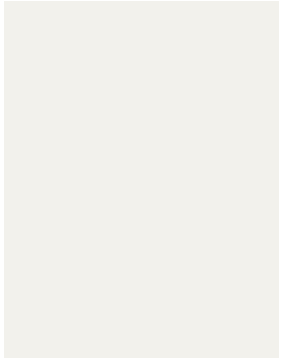
Chambray Slate



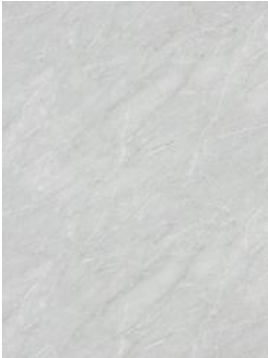
Lunar Luxe



Serene White



Trullo Marble



Kendari



Typhoon Blanc



**H.J. Oldenkamp Co.**



LET'S GET IN TOUCH

CONTACT US HERE!



4850 Coolidge Highway  
Royal Oak, MI 48073  
(586) 756-0600  
[info@oldenkamp.com](mailto:info@oldenkamp.com)