




The future of building.

OUR COMPANY CULTURE



The vision to move **forward.** The will to work **together.**

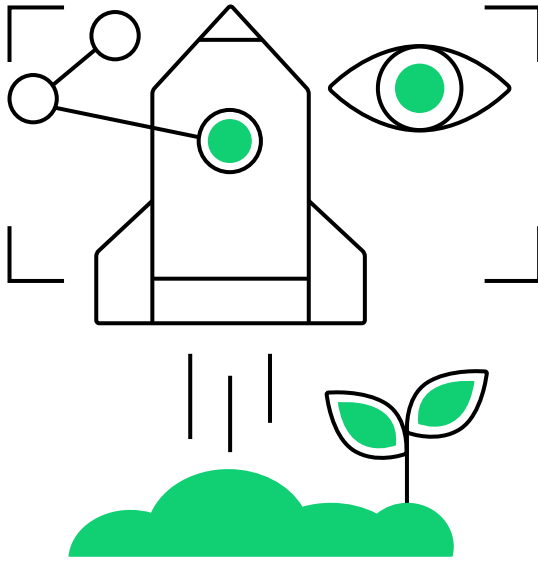
**We are an international
construction collective for
regenerative building solutions.**

Founded in 2010 by Hubert Rhomberg, CREE Buildings is dedicated to sustainable and healthy buildings using prefabricated timber-based components.

We have developed the CREE System: proven, reproducible, and constantly evolving solutions for multi-story timber-hybrid buildings. With this unique system, our partners build smartly and sustainably around the globe. From Europe to Asia to North America, together, we are revolutionizing the construction industry.

OUR VISION

**Together, we
are building a
future defined
by knowledge
sharing,
collaboration,
and respect for
nature and its
resources.**



The rules of success are being rewritten: Sustainability is not just an asset, but will be the founding principle in the construction industry.

We realize that inclusion and collaboration does not slow us down, rather is the only way for substantial progress.

We consider our own happiness and health alongside that of nature.

OUR MISSION

We are on a **mission** to make our expansive knowledge and resource network available to all forward-thinking minds invested in building a greener future.

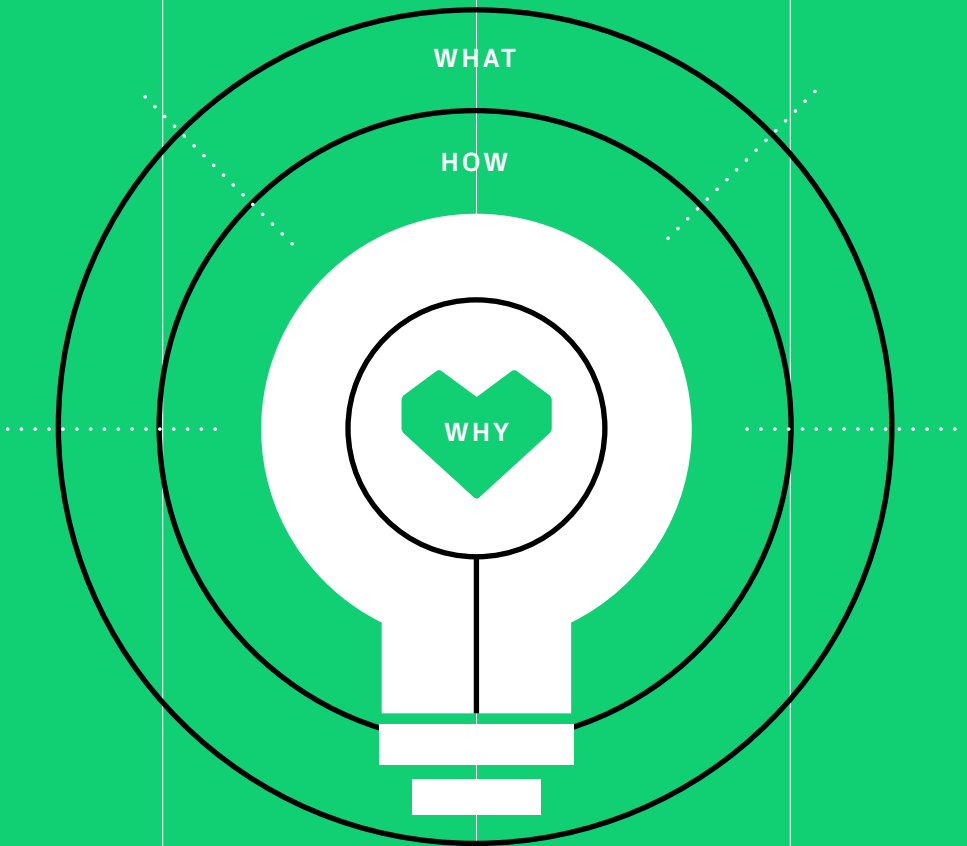


**We strive to facilitate
CREE in as many new
buildings as possible to
promote a new paradigm
in green construction.**



GOLDEN CIRCLE

Our purpose

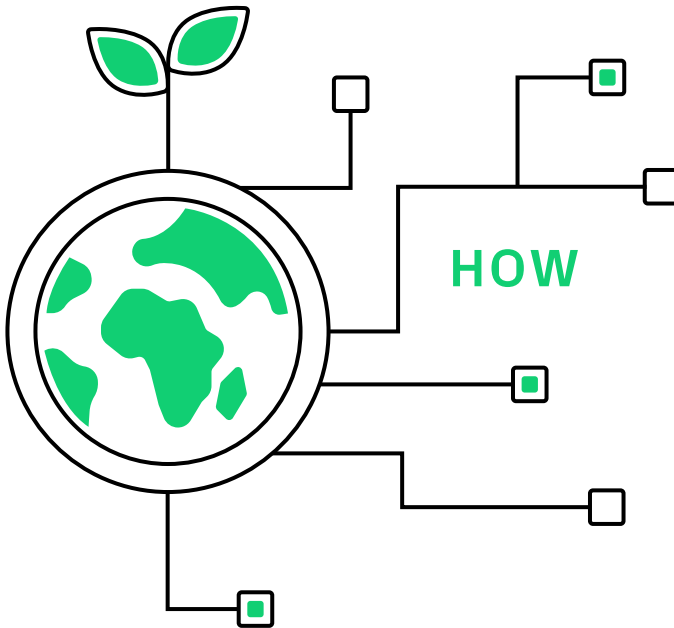




—
We believe sustainable building solutions are imperative for creating a future we all want to live in.

Even now, the construction industry is very slow in adapting future-proof and resource-efficient solutions, despite a rising demand. Every new building designed and built in a conventional way is a lost opportunity to create a better future.

We choose to lead by example and inspire people who can create a future in which we all want to live in. Together, we are driving forward change in the construction industry and showing others what's possible.



—

We are constantly expanding our expertise on how to build sustainably, quickly, and at reduced risk by continuously questioning the status quo and embracing a comprehensively regenerative approach.

But we are not doing it alone. Through continuous growth of our partner network and by investing in technology and people, we provide a global ecosystem for like-minded collaborators that accelerates the exchange of knowledge.

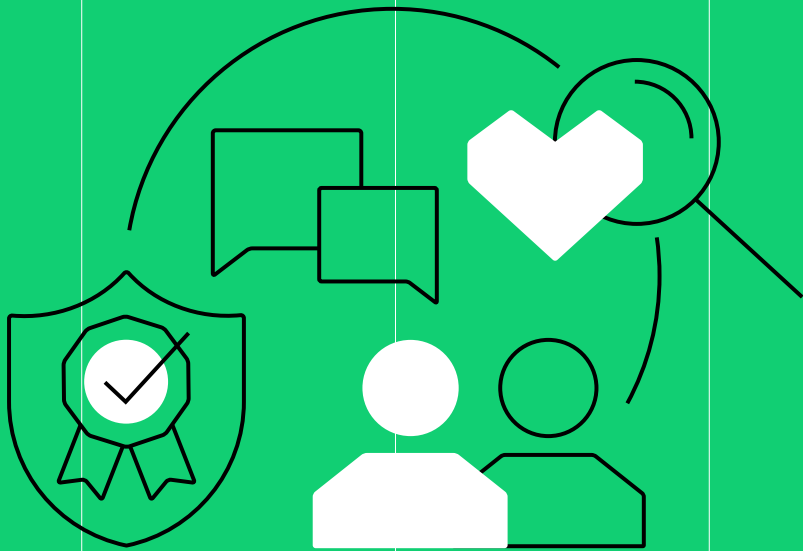
WHAT



—
We create resource- and energy-efficient timber-hybrid buildings that use renewable resources, are circular in their lifecycles, and provide a healthy and more productive indoor environment.

OUR CULTURE

Code of conduct



**BE HONEST AND
RESPECTFUL.**

Act with integrity and remind others to do the same. Be appreciative and recognize the value of multiple perspectives.

**BE AWARE OF YOUR
STRENGTH.**

Stay curious and improve your talents every day. Allow yourself to grow and put your strengths to best use.

BE A TEAM PLAYER.

Embrace team spirit and have fun while working together for success. Communicate in a solution-oriented manner, be optimistic, positive, and aim for the best.

BE RELIABLE.

Hold yourself and others accountable, regardless of rank. Lead by example, both internally and externally.

**“CREE goes beyond
and embraces a com
regenerative approa
new paradigm in gre
using renewable ma
disruptive processe
talking but doing, no
but collaborating an
a future we all want**

HUBERT RHOMBERG

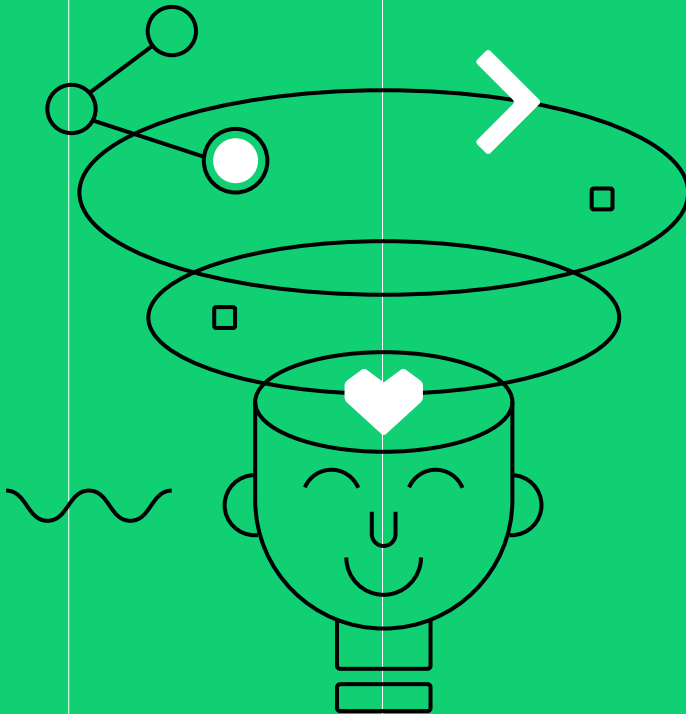
CEO & Founder of CREE Buildings




**mere sustainability
comprehensively
ach. This is truly a
en construction,
materials and scalable
s. It's not about
ot about competing
d together building
to live in.”**

OUR VALUES

Open-minded






We believe that today's challenges can be solved by working together as a collective. We believe in transparency, sharing and collaboration. We care and listen to each other and are curious to learn from one another at every turn.

OUR VALUES

Responsibility






We act for a better future by guiding our partners to build sustainably. We are proactively expanding our know-how and learn from experience.

OUR VALUES

Entrepreneurial

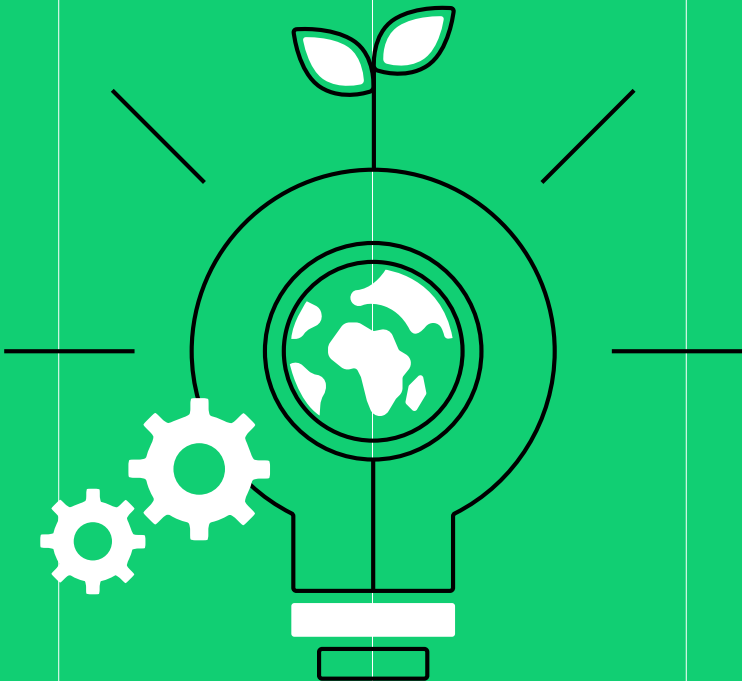





We are committed to being a reliable business partner. We create a global impact by ensuring that our business thrives and is successful. We hold each other accountable, demand measurable results, report with transparency, and work solutions-oriented.

OUR VALUES

Driving change

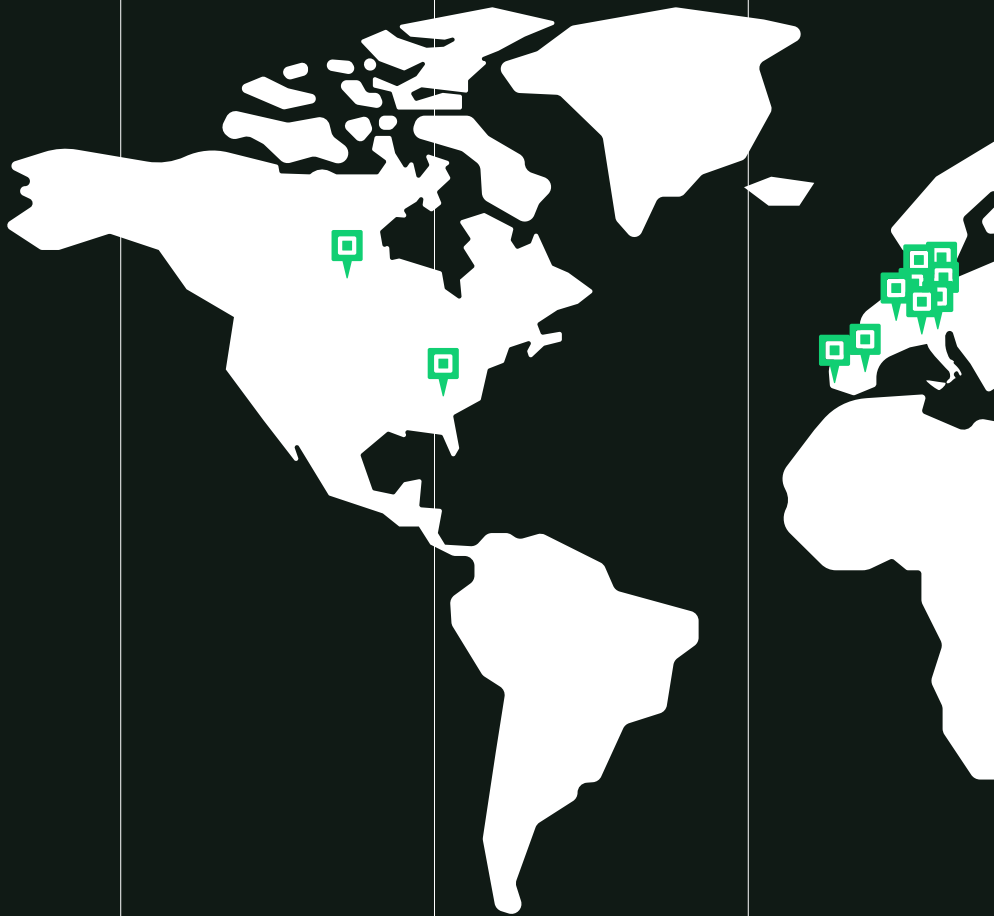




We dare to go beyond conventions. We question the status quo, continuously look for new ways to improve, and embrace a spirit of curiosity, innovation, and creativity.

OUR NETWORK

Global partners





**Let's shape the
future together.**



