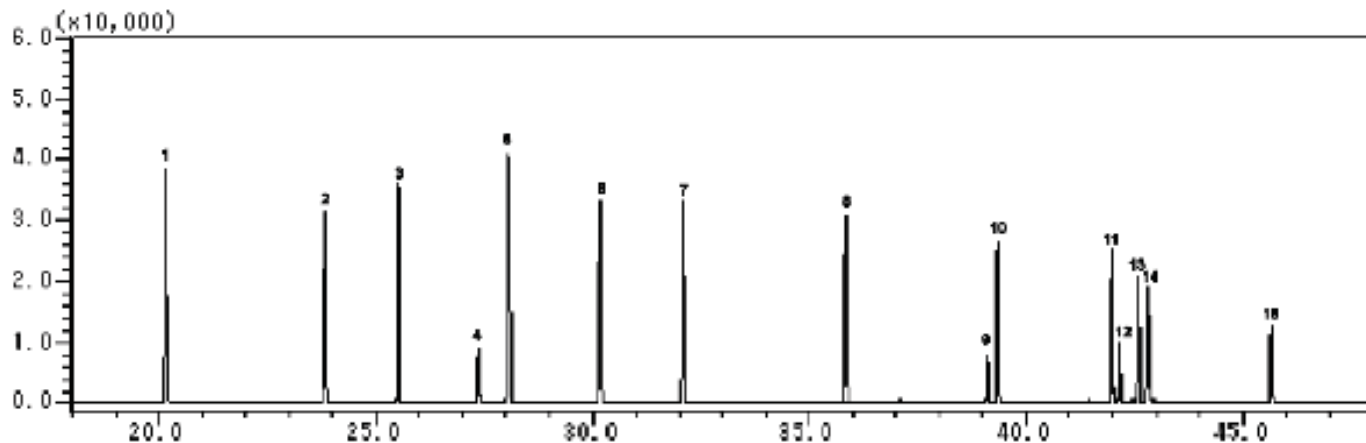


## Phthalate esters

Data No. GA020-0000



System : GC/MS  
Column : InertCap 1  
0.25mm I.D.  $\times$  30m df=0.25 $\mu$ m  
Column Temp. : 60° C (3min)  $\rightarrow$  5° C/min  $\rightarrow$  280° C (3min)  
Detection : MS  
Sample : Phthalate esters each 1mg/L

Solutes : 1. Dimethyl phthalate  
2. Diethyl phthalate  
3. Di-isopropyl phthalate  
4. Diallyl phthalate  
5. Di-n-propyl phthalate  
6. Di-isobutyl phthalate  
7. Di-n-butyl phthalate  
8. Dipentyl phthalate  
9. Butylbenzyl phthalate  
10. Dihexyl phthalate  
11. Dicyclohexyl phthalate  
12. Diphenyl phthalate  
13. Diheptyl phthalate  
14. Di-2-ethylhexyl phthalate  
15. Dioctyl phthalate