

Lynton, Lynmouth & Exmoor
ADVERTISER



May 2026 Issue 323



Working for the Community

FREE COPY

Welcome to the May Advertiser.

Please support our community by using this free publication, and if you would like to receive a digital copy please subscribe to our mailing list at www.lyntonadvertiser.com
We welcome editorial contributions and do not charge for community content.

We were saddened to hear of the passing of Philip Ringer, and our thoughts are with his family at this time.

The coming months are filled with a wide range of events, many of them taking place locally. These occasions rely heavily on the dedication of volunteers so please support these events whenever you can and help our community to flourish, as well as helping different charities.

Upcoming Events:

Brendon Open Gardens: Sunday 3rd, Monday 4th May; Saturday 4th, Sunday 5th July

May Day: Monday 4th May

Lynton & Lynmouth Steampunk Railway Day:
Saturday 9th May

Official opening of the Sailing Club Boathouse:
Sunday 10th May

Lynmouth Regatta and Maritime Festival:
Saturday 16th May

Wimbleball Lake Countryside Fair:
Sunday 17th May

Lynmouth Bike Night: Thursday 21st May

61st Golden Horseshoe Endurance Ride:
Saturday 23rd and Sunday 24th May

Parracombe Arts & Literary Festival:
Events throughout May

Simonsbath Festival: 6th to 30th May

Spring Bank Holiday: Monday 25th May

Lyn Valley Classic: Sunday 14th June

There are some excellent photos from the 102nd Land's End Trial on page 27, with thanks to Steven Neumann and Jo Goodman. Well done to the Barbrook Bunch!

Finally, the new Martinhoe Bridge near Hunters Inn was officially opened on 15th April. Work began last spring and has taken approximately ten months to complete.

Lynton, Lynmouth & Exmoor **ADVERTISER**

Working for the Community

Welcome to the Advertiser, a free publication offering community news & events, local business advertising and visitor information.

ADVERTISE WITH US

Boost your customer base and support your local community.

SAVE with our multi-buy advert discounts:

Buy 6 adverts: get 10% DISCOUNT

Buy 10 adverts: get 2 EXTRA MONTHS FREE

ADVERTISING COSTS

Full page 18cm high x 12.8cm wide: **£55**

Half page landscape 9cm high x 12.8cm wide: **£27**

Half page vertical 18cm high x 6cm wide: **£27**

Quarter page 9cm high x 6cm wide: **£18**

Eighth page 4.4cm high x 6cm wide: **£12**

Cost is per month/issue

Adverts can be black & white or full colour. We accept most file formats. We also offer smaller sizes and different term options to suit your budget.

Please send advert artwork or other content via email to Bill or Christine at

advertise@lyntonadvertiser.com

by the 15th of the month for publication in the next month's issue.

We do not charge for community content.

The Advertiser is published at the end of each month, and is available as a printed booklet or to view online at:

www.lyntonadvertiser.com and

www.facebook.com/LyntonAdvertiser.com



Wild garlic near the Manor Green, Lynmouth
Bill Pryor

Front page	Brendon Barton Farm, <i>Maria Floyd</i>
4	North Devon Council News, <i>John Patrinos</i>
5	A message from the Mayor, <i>Adrian Hobbs</i>
13	Dementia Action Week
15	Early morning Easter Service, <i>Mervyn Mugford</i>
21	Using public WiFi, <i>Andy Brett</i>
27	102nd Lands End Trial, <i>Steven Neumann, Jo Goodman</i>
29	Brendon Open Gardens, <i>Maria Floyd</i>
40	Collecting dog Henry gets a new recruit, <i>Sandra Davies</i>
41	Start of a new chapter for the L & B Railway
42	Regal Theatre
43	Lynton Cinema
47	Tarka Valley Railway

FOOD AND DRINK : 6 to 11

TRANSPORT : 26, 27

HEALTH AND WELLBEING: 12 to 15

HOMES AND GARDENS: 28 to 38

PROFESSIONAL : 16 to 25, 48

ANIMAL WELFARE : 39

LEISURE AND COMMUNITY : 40 to 47

NORTH DEVON COUNCIL NEWS

13 April 2026



The Iran war has driven up energy prices, especially for those with oil heating, which are mainly in rural areas like ours. If you are in a low-income household, you might be able to get financial support through North Devon Council's Crisis and Resilience Fund (CRF). This fund runs from April 2026 to the end of March next year and has been introduced to provide immediate crisis support for people who have suffered a financial shock, such as the doubling of heating oil costs. It isn't available to everyone, just those that meet the criteria, but it might well be you.

This is part of a national shift toward cash-first assistance, improved accessibility, and partnerships with local organisations to better support residents in hardship. Residents will be able to receive support from the CRF in other areas in addition to heating oil:

- Crisis Payments
- Housing Payments
- Resilience Services
- Oil/LPG Heating payments

To find out more ring the Council on 01271 388870.

North Devon Council has launched a renewed crackdown on dog fouling as part of its Clear Messages initiative - another attempt to address the environmental issues that matter most to residents.

Dog fouling continues to be one of the most frequently reported problems received by the council's Environmental Health team. Beyond being unpleasant, dog mess poses health risks, particularly to children, impacts play areas and parks and can cause tension between neighbours.

However, attention is mainly directed at the areas that report most! I know there are often problems in our area, but they aren't reported to NDC frequently enough to get us the attention we deserve, instead it goes to Ilfracombe and Barnstaple. So please report any and all dog fouling to NDC providing photographs, locations and other details such as descriptions or vehicle registrations where it is safe to do so. If possible, this can also include a photo of the dog and its owner, but only if it can be done without putting yourself at risk. Evidence from the public is vital in helping NDC identify repeat offenders and issue penalties.

As usual, councillor's surgeries continue to be on the first Saturday of each month. Next is 2nd May. They are in the Jubilee Room at Lynton Town Hall. I'll be there from 11am to 1pm, while Mayor Adrian Hobbs of L&L will be there from 10am to midday. Please come and talk to us.

John
john.patrinosa@northdevon.gov.uk
07975 746860



A message from the Mayor *from Mayor Adrian Hobbs*

Annual Parish Meeting

We are currently planning our Annual Parish Meeting to take place before the 1st June. I would like to invite representatives from any local club, organisation or charity fundraising team to attend and give a brief account of your activities over the past year, highlighting any events, achievements, or initiatives you would like the parish to be aware of. This meeting can provide a valuable opportunity for local groups to come together, share updates, and strengthen community connections. Please notify our Town Clerk, email: townclerk@lyntonandlynmouthtowncouncil.gov.uk if you would like to participate.

USEFUL TELEPHONE NUMBERS

Lynton Town Hall

01598 752384

Lynton Pharmacy

01598 753377

Lynton Health Centre

01598 753226

NHS Direct (out of hours) 111

Police (Non-Emergency) 101

North Devon District Hospital

01271 322577

Lynton Primary School

01598 753309

Garson House Care Home

01598 753202

National Rail Enquiries

03457 484950

Town Councillor Vacancy

Following the sad passing of Councillor Phillip Hawkins there is now a vacancy on the Council. If a request for an election hasn't been made by 22nd April by 10 electors Council will look to fill the vacancy by co-option.

Bike Nights

As I write this message I am looking forward to later on this evening when the first of the "Bike Nights" takes place on the Manor. Although the weather doesn't look very favourable I'm sure it will be well attended. These nights will take place on the 3rd Thursday of each month until September.

Lynmouth Boathouse

Over the past months the Lyn Sailing Club has been building a new boathouse next to the Memorial Hall to house their rescue boat the 'Gilbey'. Works have now been completed and the official opening will be on Sunday 10th May from midday.

Council Surgeries

A reminder that Myself and Cllr Patrinos will be continuing with the surgeries on the 1st Saturday of the month between 10am - 1pm. in the Jubilee room. if you have any questions or concerns.

Adrian

THE RISING SUN

14th Century Smugglers' Inn "Where History Meets Hospitality"

AWARD-WINNING ALES

INGREDIENTS FROM LOCAL FIELDS

AND COASTAL WATERS

HOTEL ROOMS THAT WHISPER THE PAST

OPEN DAILY – STEP BACK IN TIME

& SAVOUR THE TASTE

HOME OF DEVON'S LEGENDARY **SUNDAY ROAST**

Step inside history. Stay for the roast.



01598 753223 | www.risingsunlynmouth.co.uk
www.risingsunlynmouth.com



Stag Hunters Inn
Brendon

- Open every day from 12pm – 10pm.
- Lunches served daily from 12pm – 2pm.
- Home-made food served every evening from 6pm. Booking recommended.
- Roasts served Sunday lunchtime 12pm – 2pm and Sunday evening from 6pm. Booking recommended.
- Riverside Beer Garden.
- Comfortable, en-suite accommodation – Bed and Breakfast or 2 course Dinner, Bed and Breakfast options available.

Please give us a ring for details about any of the above.

01598 741222

Stag Hunters Inn, Brendon
Lynton, N Devon, EX35 6PS

stay@staghunters.com
www.staghunters.com



Mobile Fish Van

Locally Caught Fish

Every Tuesday

Lynton Town Hall 1000 - 1100



Contact us to pre-order your fish. Meat and Veg delivery is also available (pre-order only). Collection from the Van.

☎ 07528 243333 | ✉ passmoresfishvan@hotmail.com

Thursdays at Living Waters Lynton URC

☕ 10am – Midday

Coffee Morning

Come for a cuppa, a chat, and a welcoming space.

📌 The Church is open for private prayer
A quiet moment for reflection,
peace and connection.

Donations gratefully accepted

🕒 7pm – 9.30pm

Games Evening

Join us for laughter, friendly
competition and community fun

£3 per person

GARSON HOUSE

Why not take part in our raffle? Only £1 per strip!




Coffee Morning

Wednesday 6 May, 2026
10.30am to 12 noon
 ...and then the first Wednesday of every month!

£2.50 for a cup of tea/coffee and a slice of cake
 All proceeds to the Garson House Activity Fund.

Pavilion stores & café

THE PAVILION, PARRACOMBE EX31 4QL



Community Store and Café in Parracombe
 The best of West Country produce, everyday grocery and friendly café on your doorstep
 Open 7 days a week Mon to Sat 8:30am – 5:30pm,
 Sun 9:00am to 1:00pm

shop@parracombe.org.uk | 01598 763569
 facebook.com/parracombebavillion/

Little Ray's Take Away
 2 Church Steps, Lynton EX35 6AA
07956 485045 vixster73@yahoo.com
 Open all year - Monday to Saturday from 8.00am

Full English Take Away
 2 sausage patties, 2 bacon, 1 egg, tomato, 1 black pudding, 1 hashbrown, mushrooms, beans and toast Inc Tea/Coffee £9.50

Little Cub's Breakfast
 1 sausage patty, 1 bacon, 1 egg, 1 hashbrown, beans and toast £6.50

Breakfast Baps
 Bacon, sausage, egg (extra items 50p) £5.00

Stuff on Toast
 Jam, marmalade, honey 2 x slices £2.00
 Bacon, egg, beans, tomato, mushrooms £4.00

Vegetarian Breakfast Bap
 Halloumi, egg, hashbrown, tomato and mushrooms £6.50

Vegetarian Breakfast
 Halloumi, egg, hashbrown, tomato, mushrooms, beans and toast Inc Tea/Coffee £8.00

Baguettes/Sandwiches
 Served with mixed salad, homemade coleslaw, bag of crisps

Mature Cheddar with apple and cider chutney £6.95
 Egg Mayo £6.50
 West Country ham with apple and cider chutney £7.50
 Bacon, lettuce and tomato £7.50
 Tuna Mayo £7.50
 Prawns in Mayo or prawn marie sauce £8.50

Children's Meal Deal
 Ham, cheese, jam sandwich or hotdog roll served with a bottle of water, apple/orange carton, bag of crisps or an apple £6.00

Salads
 Served with mixed leaf salad, homemade coleslaw and potato salad with red onion, apple slices, beetroot, 1/2 baguette, bag of crisps from £7.50

Burgers
 4oz Devonshire beefburger with or without cheese £6.50
 Extra items 50p bacon, egg, mushrooms, tomato Served with salad

Yogi Special
 2 x 4oz Devonshire beefburgers, cheese, bacon, egg, tomato, mushrooms, salad £9.95

Drinks
 Tea, coffee, bottled water, apple/orange carton, Coke Zero £1.00
 Hot chocolate with whipped cream, marshmallows and sprinkles £2.50

Vegetarian Burger
 Lentils, carrots, onions, spring onions with garlic, cumin, coriander served on a floured bap with mayo £6.95



BLUE BALL INN



Countisbury Hill, Countisbury, Lynmouth EX35 6NE

The Blue Ball Inn is a historic Exmoor coaching inn offering warm hospitality, hearty food, dog-friendly stays, and direct access to some of the finest walks and views in the National Park.

The perfect destination for your walk, with four-legged friends always welcome. Experience our famous Exmoor Sunday roast or relax into our 'Stay & Dine' packages.

Find out more at
blueballinn.com
Plan your perfect
Exmoor getaway.



The Esplanade, Lynmouth

**BREAKFAST, HOME-MADE SOUP, BURGERS
SANDWICHES & FRESH LOCAL FISH
PIES, DRINKS, CAKES & CREAM TEAS**
Dogs Welcome



...and the best Sea Views in Lynmouth!

Open 10am—5pm
Last Orders 4:30pm

Daily Specials

www.thepaviliondiningroom.co.uk



THE HUNTERS INN is a warm, welcoming and dog-friendly, family run country pub nestled in the heart of the Heddon Valley.

Full of charm and character, we offer ten cosy en-suite bedrooms as well as a separate, self-contained and self-catered lodge - perfect for families, walkers and guests seeking extra space.

All accommodation can be booked easily through our website.

We serve hot meals daily, including a hearty breakfast from 9:30am. Our menu features fresh, seasonal dishes and classic pub favourites, ideal whether you're stopping in after exploring Exmoor or enjoying a leisurely meal with family and friends. With friendly staff and a relaxed atmosphere, the Hunters Inn is the perfect spot to unwind.

Open daily: 09:30am – 10:00pm

Food served: Mon–Fri: 09:30–11:00, 12:00–3:00, 5:00–8:00

Saturday: 09:30–8:00, Sunday: 09:30–5:00

Book online at thehuntersinnheddonvalley.co.uk

Email: enquiries@thehuntersinnheddonvalley.co.uk

Phone: 01598 763 230



Exmoor Distillery

www.exmoordistillery.co.uk

01398 323 488

Come and visit us for a tour and tasting!

Try all our premium spirits and learn about production. Give us a call to book your tour.

01398 323 488

exmoordistillery.co.uk






THE CROWN
LYNTON

Market Street, Lynton, EX35 6AG
www.thecrownlynton.co.uk



PUB

We've refreshed your favourite local
Come and see what's new. Step into a beautifully updated space that keeps all the charm of The Crown, now with a fresh new look.

ROOMS

Restored & Redesigned
Carefully restored and thoughtfully redesigned, our rooms blend character with modern comfort. all designed for a relaxing getaway.

DINING

New Season, New Flavours
Enjoy our new dining experience with a focus on comforting classics and seasonal dishes and our much-loved Sunday roasts.

Yarn Market Hotel

High Street, Dunster
Exmoor National Park, TA24 6SF

Restaurant open daily
for evening meals.

Sunday lunches
Served 12.00 to 2.30pm
2 courses £18.00

Telephone: 01643 821425
Email: hotel@varnmarkethotel.co.uk



TASTE EXMOOR
FOOD & DRINK FAIR
ALLERFORD VILLAGE HALL*

20 & 21 June 2026

*New venue! Find us at TA24 5HL

WWW.EXMOORFOODFEST.COM



HAPPY FEET EXMOOR

Alison Smith, Dip FH, MAFHP, MCFHP
Mobile foot health practitioner

Basic nail trimming, foot care advice, corn/
callus/verrucae, fungal nails, neuro vascular or
diabetic foot assessment.

I can visit you and treat you in the comfort of your
own home.

Tel: 07387 143929. Phone, send me a text or
email me at: foothealthexmoor@gmail.com

Spring COVID-19 vaccinations

If eligible, you
need to book an
appointment
through the NHS
App or website
before 30 June



CHIROPODIST

Martin John Malcolm

MssCh, MBChA HPC No: CH 17774

Boutport Chiropody Clinic

28 BOUTPORT STREET,
BARNSTAPLE, EX311RP

will be holding surgery at

Lynton Bowling Club on

Wednesday 27 May

Thursday 9 July

Full treatment £27.00

For an appointment please ring

01271 323392 or 07970 207044

HOME VISITS BY REQUEST

LYNTON & LYNMOUTH BIKE NIGHT



STARTING THURSDAY 16TH APRIL 2026
Every 3rd Thursday Until September
6PM - 9PM

SUPPORTING BLOOD BIKES & FUNDRAISERS!



EVERYONE WELCOME!
RAFFLE, FOOD, & GREAT COMPANY!

Lynton Pharmacy

Under new management with regular ad consistent opening times



Mon, Tues, Thurs, Fri
08.00 - 13.00, 14.00 - 18.30
Wed 08.00 - 13.00, 16.30 - 18.30
Sat 09.00 - 12.00

Most pharmacies can help you with
seven common conditions
without needing a GP appointment

- **Sinusitis**
(adults and children aged 12 years and over)
- **Sore throat**
(adults and children aged 5 years and over)
- **Earache**
(children and young adults aged 1 year to 17 years)
- **Infected insect bite**
(adults and children aged 1 year and over)
- **Impetigo**
(adults and children aged 1 year and over)
- **Shingles**
(adults aged 18 years and over)
- **Urinary tract infection**
(women aged 16 to 64 years)

01598 753377

<https://lyntonpharmacy.co.uk/>

Dementia Action Week

Small Moments, Big Impact

18th–24th May 2026



MINEHEAD
DEMENTIA
ACTION

Dementia Action Week is an important opportunity to raise awareness and remind ourselves that people living with dementia are very much part of our community.

Dementia can affect more than memory. It may also affect communication, confidence, and the way a person experiences the world around them. Everyday situations can become more difficult, both for those living with dementia and for their families and carers. Small acts of understanding can make a real difference. Taking a little extra time when someone is finding it hard to communicate, offering reassurance if they seem unsure, or simply sharing a friendly smile can help someone feel more at ease. These simple moments help people living with dementia remain connected, valued, and included.

At Minehead Dementia Action (MDA), we see every week how important these connections are. We are a small local charity providing friendly and welcoming activity groups for people living with dementia and their carers in the Minehead area. Our sessions offer opportunities to meet others, build friendships, and enjoy meaningful time together in a supportive environment. Dementia Action Week is not just about awareness - it is about action. Together, we can help create communities where people living with dementia feel understood, supported, and that they belong.

To find out more about Minehead Dementia Action and our regular activities, please visit mineheadda.org.uk or call 07550 014828.

We are also on Facebook, follow us by searching 'Minehead Dementia Action' or go to facebook.com/mineheaddementiaaction.

IMPORTANT ANNOUNCEMENT

After 48 years of serving the West Somerset community, we have made the difficult decision to permanently close the West Somerset Advice Bureau also known as Citizens Advice West Somerset on **Thursday 30 April 2026**.

This decision comes after careful consideration of long-term financial viability.

What this means:

Our last day of operation will be **Thursday 30 April 2026**

We will endeavour to complete current client support activities or redirect clients to an alternative option for ongoing support.

We want to express our gratitude to everyone who has supported us over the years.

0808 278 7842

HOME EYE EXAMINATIONS

Local, quality independent eyecare

If you struggle to get out to the optician,
let us take care of your eyes at home

Qualified, NHS-funded eye examinations
Professional spectacle dispensing and aftercare

More than 10 years' experience of home eyecare

Make an appointment by phone or online

Atlantic Home Eyecare

The local opticians that come to you.

01271 590039

www.atlantichomeeyecare.com



Providing NHS services

Garson House Care Home



RESIDENTIAL CARE INCLUDING DAY AND RESPITE CARE

We are a family run care home who
pride ourselves in serving our
community with a homely feel.

**OPEN COFFEE MORNING HELD ON THE
FIRST WEDNESDAY OF EVERY MONTH
FROM 10.30AM TO 12NOON.**

Garson House Care Home

7 Lee Road, Lynton, EX35 6HU

Tel: 01598 753202

email: care.garson@hotmail.com

Hannah's

HAIR & BEAUTY SALON

Call: 01598 752618

13 Queen Street
Lynton Devon EX35 6AA

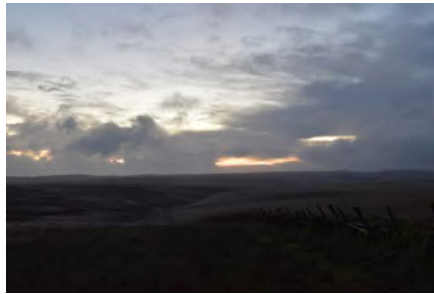
Reverend Philip Ringer

We advise the death on 21 March 2026 of the Reverend Philip Ringer who served as Vicar in the Lyn Valley from 1996 until 2003.

Philip was a well-known and much-loved minister and although he moved to Bridport in 2008, many local people will have fond memories of him.

We send sincere condolences to his wife Christine, and family.

JOINT CHURCHES EASTER GATHERING ON BRENDON COMMON



Exmoor folk are a hardy lot and not to be easily discouraged by a bit of wind and rain. Over fifty determined folk gathered on Brendon Common to welcome the dawn and the sunrise on Easter morning.

As a joint service with Lyn Mission Community, Exmoor Benefice and Shirwell Mission Community, the service was conducted by Rev'd Miles, Rev'd David Weir and Rev'd Rosie Austin. A small band of three saxophonists provided the music, opening with Morning Has Broken.

Rev'd Miles welcomed the congregation and spoke about the message of Easter.

Rev'd Weir read a lesson. Congregation accompanied the hymns, Thine Be the Glory and Jesus Christ is Ris'n Today. Congregation joined in with prayers including the Lord's Prayer before turning to see the sunrise and increasing light from the East, and Rev'd Austin gave the closing blessing.

Everyone then enjoyed breakfast with croissants and tea or coffee.

Thank you to all who braved the weather and gathered to make this a poignant service.

Mervyn Mugford



Architectural Services

Specialising in:

- Feasibility Studies.
- Concept Drawings.
- Planning Drawings & Applications.
- Working Drawings.
- Building Regulations Applications.



KIRK DYER

1 Baker's Court, Lynton, Devon, EX35 6EW

07873 957158

www.kgdyerandsonsltd.co.uk

kirk@kgdyerandsonsltd.co.uk

South
West
Planning
Services

- Planning applications
- Enforcement issues
- Planning appeals

Dan Day-Robinson

B Sc (Hons), MSc, FRGS, MRTPI

Tel: 07500 860949

ddr@southwestplanning.co.uk



Chartered Town Planner
Royal Town Planning Institute

Upton
Financial Advice

**Clear options, honest advice.
Support you can trust.
FREE INITIAL CONSULTATION**

Local and always on your side,
independent mortgage advice that
puts you first.

**Call Upton Financial Advice
on 01598 720044**



www.uptonfinancialadvice.com

A fee may apply for arranging a mortgage, depending on your circumstances. This will be no more than £250.
Your home may be repossessed if you do not keep up with your mortgage repayments.

**FED UP WITH THE
HEADACHE OF
BOOK-KEEPING?**

NEED HELP?

CALL
CAROL ROBERTS
A.I.C.B.

07736 732377

FRIENDLY HELPFUL
SERVICE

Philip J Milton
& Company Plc

Established 1985

**North Devon's Leading
Independent Wealth
Managers**

Our Services

*Wealth & Portfolio Management**
*Retirement & Financial Planning**
*Tax Planning**

Personal Accountancy & Taxation
Attorneyships, Wills, Trusts &
Probate Administration

**Contact us today for a
no obligation initial
consultation at our cost.**

**Authorised & Regulated by the
Financial Conduct Authority*



Choweree House, 21 Boutport Street,
Barnstaple, Devon, EX31 1RP

www.miltonpj.net 01271 344300 info@miltonpj.net



HASSLE-FREE LOW COST ACCOUNTING

All of your accountancy needs including

- | | |
|--------------------------------------------------------|------------------------------------------------------------------------------|
| <input checked="" type="checkbox"/> Bookkeeping | <input checked="" type="checkbox"/> VAT Returns |
| <input checked="" type="checkbox"/> Annual Accounts | <input checked="" type="checkbox"/> Limited Company Accounts |
| <input checked="" type="checkbox"/> Income Tax Returns | <input checked="" type="checkbox"/> Getting you ready for making Tax Digital |
| <input checked="" type="checkbox"/> Payroll Services | <input checked="" type="checkbox"/> Home Visits |

M: 07779 601 574 • mark@map-accounting.co.uk
www.map-accounting.co.uk



FS Friendship & Sons *Funeral Directors*

We are a family run business based in Barnstaple providing professional and caring services to local families across North Devon 24 Hours a day.

- **Offering Traditional and Bespoke funerals**
 - **Direct Cremation for £1295.00**
 - **Golden Charter Funeral Plans**
 - **Private Chapel of Rest**
 - **Home visiting service**
 - **Floral Tributes**
 - **Transport to our Funeral Home**

For Professional advice and Guidance
please contact:

Tel: 01271 267337 (24 Hours)

www.friendshipandsons.co.uk

Vicarage Lawn, Barnstaple, EX32 7BN



Robson & Stephens
Independent Family Funeral Service

**24hr Personal Care from
Mark, Melissa & Gary**

- 30 years experience
- Award winning Agent for pre-paid Funeral Plans in West Somerset
- Quotes available with no obligation

Services from £1,400



01643 703000

www.rsfuneralservices.co.uk
14 Park Street • Minehead • TA24 5NQ

squiggle

Estate Planning South West - Find us on Facebook

Wills

Trusts

Power of Attorney

Probate



Book your free consultation today!



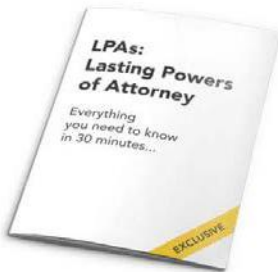
01271 442 356

www.squiggleconsult.co.uk

33 High Street, Ilfracombe,
Devon, EX34 9DA

Registered Company 10816512

"LPAs: Lasting Powers of Attorney Everything you need to know in 30 minutes."



An exclusive guide written by local LPA expert lestyn Milton-Jenkins - answering all your questions about LPAs including types of LPAs and costs.

Readers of Lynton & Lynmouth Advertiser can request a printed copy now - free of charge and without obligation.

Just call 01643 703 234 or email enquiries@thornesegar.co.uk and one of the friendly team will post it to you first class.

3 Bancks Street, Minehead
www.thornesegar.co.uk

THORNE SEGAR
SOLICITORS

The law firm that thinks in full colour



But keeps things black & white

Operating out of three locations across Devon,
we have over 160 of the brightest minds ready to
provide you with the best possible legal advice in a
no-nonsense, approachable and accessible way.

WOLLENS

Full spectrum law

wollens.co.uk

01271 342268

Dear Readers,

This month we are going to take a look at public Wi-Fi. It is one of those modern conveniences we have all come to rely on and is pretty much everywhere we go. Even some supermarkets now offer it as standard and it can be a welcome relief when mobile signal is poor or data is running low and your shopping list is on Alexa (as mine is!) However, while it is undoubtedly useful, it is worth understanding that public Wi-Fi is not always as safe as it appears.

The key issue is that public networks are by design, open. Unlike your home broadband where you control who connects, public Wi-Fi allows many unknown users onto the same network. This creates opportunities for cybercriminals to intercept data, set up fake networks, or exploit unsecured connections. It sounds dramatic but in reality it often comes down to simple opportunism rather than sophisticated hacking.

One common risk is connecting to the wrong network. In busy areas, it is not unusual for an attacker to create a network with a name very similar to the legitimate one. For example, “Cafe_WiFi_Free” instead of the official name. Once connected, any information you send could potentially be monitored. For this reason, it is always best to confirm the correct network name with staff before joining.

Even on legitimate networks caution is sensible. Avoid accessing sensitive information such as online banking, entering passwords, or making purchases while

connected to public Wi-Fi. If it is something you would not be comfortable doing on a shared computer, it is best avoided on a shared network.

There are, however, simple ways to use public Wi-Fi more safely. Ensuring that websites use “https” (most browsers now indicate this clearly) at the beginning of the domain eg <https://www.lyntonadvertiser.com> adds a layer of encryption. Keeping your device updated also helps protect against known vulnerabilities. If you regularly rely on public Wi-Fi, you may also consider using a VPN (Virtual Private Network) which encrypts your internet traffic and adds an extra layer of privacy. There are a number of free ones out there. Tunnel Bear is one option.

It is also good practice to turn off automatic Wi-Fi connection on your phone or laptop. This prevents your device from joining unknown open networks without you realising. Likewise, disabling file sharing while on public networks reduces the risk of exposing personal files.

None of this means you should avoid public Wi-Fi altogether. Used sensibly, it remains a very convenient tool. The key is simply to treat it a bit like any public space, perfectly fine to use but with an awareness of what you are doing and who might be around.

As always, any questions please send them to me, Andy at ICT@lyntonadvertiser.com

classic.co.uk

Whether you're
staying or letting
...make it classic

classic cottages

Est. 1977

Holiday letting & property
management specialists since 1977



Certified



Corporation



EXMOOR
PROPERTY



MICHAEL ADEY
PROPERTY

W EXMOORPROPERTY.COM
E INFO@EXMOORPROPERTY.COM

T 01598 752221



Scan for
instant
valuation

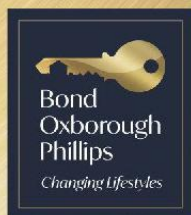


Buying? Selling? Letting?

Make sure you choose the right estate agent



boproperty.com



**Call 01271 866699
today for a free
instant valuation**

DEVON AND CORNWALL'S AWARD WINNING ESTATE AGENTS



JAMES DOBLE
COMMERCIAL

THE COMMERCIAL PROPERTY SPECIALISTS

We offer a free, no obligation, marketing appraisal with confidentiality assured on all types of businesses and commercial property throughout the Westcountry. Here are just some of the benefits that our clients receive:-

- Free valuation advice and marketing preparation
- Free internet listing on national sites
- Free local, regional and national marketing
- Confidential sales undertaken
- Regular client contact
- A Specialist Estate Agency dealing in Businesses and Commercial Property
- Competitive fee structure with no upfront fees

To discuss any aspect of buying or selling a commercial property or business, please contact us on

01237 424053

Or via www.jd-commercial.co.uk

Need bright ideas for your marketing?



Logo design
Printed marketing
Adverts
Websites
Social media

Call Carolien on
07814 183641

lucid creative

www.lucidcreative.co.uk

LEARN TO DRIVE

GARY ROBERTS

For competitive prices call

GARY ROBERTS

07519 027 666

THEORY TEST TUITION AVAILABLE

Plus Pass Registered

R.J.GRAHAM ENGINEERING

WELDING & FABRICATION

AGRICULTURAL & PLANT REPAIRS

GENERAL VEHICLE REPAIRS

CALL: 07837 981510



**LYN VALLEY
GARAGE**

More than just MOTs...

MOTs, Full & Part Servicing
Diagnostic Checks & Repairs
Electric Vehicle Servicing, Maintenance & Repair
Tyre Fitting & Puncture Repairs
Local Recoveries

Lyn Valley Garage

41 Lee Road, Lynton, EX35 6BS. Tel: 01598 752513
lynvalleygarage@gmail.com



Opening Times

Mon - Fri: 7am - 6.30pm

Sat - Sun: 8am - 6pm

Winter hours may vary

Barbrook Filling Station

Barbrook, Lynton, EX35 6PD

Tel: 01598 752248

barbrook.petrol2012@gmail.com



Automotive Services

M.O.T.

Vehicle and Motor Bike Servicing

Vehicle Diagnostics

Welding

Tyre Repair and Fitting

and much more

RIVERSIDE GARAGE LTD

Porte Farm, Kentisbury, EX31 4NL

01271 649796

Email: riversidegarage23@gmail.com



102nd Lands End Trial, 3rd and 4th April, 2026

Above and left:

Some of the competitors refuelling at Barbrook Filling Station where staff keep the pumps working throughout the night.

Photographs: Steven Neumann

The Land's End Trial is a 24-hour motorsport event rich in automotive history. Competitors come from all over England to take part in this challenging 243 mile drive between Bridgwater in Somerset and Redruth in Cornwall.

<https://themotorcyclingclub.org.uk/the-lands-end-trial/>



Below:
Volunteers serve tea, coffee and cake to the competitors in Barbrook Village Hall.



Above:

The Barbrook Bunch finish the 102nd Lands End Trial.

Left to right Bob & Dan Red Mx5, Ric & Jo MGB, Nigel & Rich Graham Beetle

Jo Goodman

Exmoor Stonework & Pointing

Masonry and ditch walls
Traditional stonework
High quality lime pointing
All aspects of stone walling
40 years experience

Frank : 07713 274321

Rick : 01598 741104



HEDDON VALLEY GARDEN SERVICES

Based in Parracombe I have more than 25-years experience in horticulture gained through college study and working in public gardens including RHS Rosemoor, Marwood Hill Garden, National Trust and Wakehurst Place.

I currently work for private individuals locally, and offer a dedicated, reliable and professional service, carrying out any gardening requirements such as pruning, lawn cutting, planting, hedge trimming, strimming, minor tree works and weed control. I can also provide a garden design service.

- Hourly Rate £20.00
- Free consultations
- References available

Tel: 01598 763325 or 07866 574357

Email: peterussell3@hotmail.com

Broadley

Lawn Care

Longing for a lush, thick and weed free lawn?

Tailored lawn treatments
across Minehead, Taunton
and West Somerset

**Free lawn
assessment**
(No obligation)

📞 079696 51033 📧 info@broadleylawncare.co.uk

🌐 <https://www.broadleylawncare.co.uk>



North Devon farmers open historic gardens to the public to raise money for charity

The public will be able to visit four stunning gardens at farms on Exmoor this summer where they can learn more about local farming and wildlife while helping to raise money for charity. The gardens in Brendon, North Devon, are some of the farms that date back to the 17th century, with holdings in the area recorded in the Domesday Book.

One of the gardens, at Brendon Barton Farm, has been created by Maria Floyd and includes striking links to Devon's past, where relics of former farming life are woven among flowers and native plants to create a unique setting. Maria said "I wanted to include in my garden, the antique agricultural tools and machinery which were once common on farms in Devon. I feel it's important to keep the stories of these working tools alive as they are key relics of our farming history. Integrating them into the garden is a way of preserving them while also teaching people about our farming history in a beautiful setting".

The garden at Brendon Barton Farm includes the following features:

- Mighty Devonshire shillet stone slabs, secured with hay baler chains
- WWII bomb shells found on Brendon Common
- Worn-out digger rubber tracks transformed into garden edging and steps
- Stone walls with vintage gate hinges and wooden farm gates
- Pillars of Victorian granite farm rollers once used for pancaking stones into the soil
- Flower-filled metal churns once used to transport milk
- Feeders from an original cowshed (shippen)
- Granite window mantels from the local Lynton Castle Hotel which caught fire in 1987 - the mantels were hand-carved by stonemasons from small Devon villages
- Reclaimed stone still bearing dynamite scars, that were blasted out after the 1952 Lynmouth Flood, one of the most devastating river floods in modern English history

Brendon Barton is also home to the Tippbarlake Exmoor Pony Herd, one of the largest groups of native, rare-breed Exmoor ponies, and visitors may be able to see them roaming free on Exmoor when they visit the gardens.

The other neighbouring farms taking part in the open days are Higher Tippacott Farm, Hall Farm and Barn Farm. Visitors can enjoy a light lunch at Higher Tippacott Farm, with delicious quiche, salads, homemade cakes and Devon cream teas.

The four gardens were also recognised in the Devon Wildlife Garden Awards in 2025. Money raised from the open garden days will go to the National Garden Scheme, which has been funding health charities for almost 100 years.

Maria said "As well as raising money for this important charity, we also wanted to raise awareness of the critical role farm wildlife gardens play in supporting native species. Visitors may be surprised to discover that many farms include large nature-rich gardens that help feed and nurture wildlife. Visiting the gardens is a fantastic opportunity for individuals and families to learn more about farming and biodiversity in this part of the world."

Photos are of Brendon Barton Farm garden

OPEN GARDENS

Sunday 3rd and Monday 4th May
Saturday 4th and Sunday 5th July

£6 entry to all 4 gardens (children free). The gardens are 1 mile south of A39 between Porlock and Lynton.

Tickets can be booked at: [Find a Garden | National Garden Scheme](#).

Money raised will go to the National Garden Scheme charity - [Home National Garden Scheme](#). Further information about Brendon Barton

Farm garden can be found at: [Brendon-Barton](#) or contact Maria at mariafloyd@gmail.com





GAVIN HENDRY
TREE SURGERY & GROUNDS
MAINTENANCE

www.gavinhendry.co.uk



Professional Tree Surgeons Serving The South West

Services

- Tree Surgery
- Hedge Maintenance
- Stump Grinding
- Emergency Call Outs
- Grounds Maintenance

DOMESTIC & COMMERCIAL

Book In A Free Quote Visit



Follow us on social



Contact Us

☎ 01271 269117

🌐 www.gavinhendry.co.uk

@ emmahyland@gavinhendry.co.uk

📍 Barnstaple, Devon



BIRCH MEADOW
— LANDSCAPING LTD —



- Bespoke Garden Design
- Award-Winning Landscaping
- Planting Schemes and Garden Clearance
- Knotweed & Invasive Weed Control

Creating beautiful outdoor spaces – from statement landscapes to individual projects.

Contact us today for a free consultation

01598 711824

info@birchmeadow.co.uk



See more of our work online

www.birchmeadow.co.uk



WILLS FENCING SERVICES

Established over 30-years

All types of garden fencing

Gates made to measure, any design

Garden Decking, any size or shape

Agricultural & Equestrian Fencing

Post Rail Security Fencing

Chainlink 13-ton machine available

All work Guaranteed

FREE Quotes | FREE Advice

07890 758745

PLUMBING, HEATING & RENEWABLES

Look no further for all your heating and bathroom installations, repairs and upgrades. Whatever your needs, with our team of highly experienced engineers, you can be sure of receiving high quality heating services at very competitive prices.

We specialise in renewable energy.



**EXMOOR
HEATING
LTD**

For quality services at competitive prices call:



01271 375196

exmoorheating.co.uk

GAS SAFE | OFTEC | REAL | HETAS | WRAS



Independent family-run oil distributor



**SUPPLYING THE LYNTON / LYNMOUTH
AREA MOST DAYS OF THE WEEK**

**At Winson Petroleum we strive to
offer prompt reliable deliveries at
a competitive price every time!**

🔥 7.5 t. Mini Tanker Available on Request

🔥 Top-up Service

🔥 Monthly Payment Option

Phone: 01271 858677

Email: info@winsonpetroleum.co.uk



FLOWKI

PLUMBING LTD
HEATING, BATHROOMS & TILING

**Specialist in custom/luxury bathroom design,
installation and tiling**

DAVID LYE

Plumbing and heating engineer with over 20 years' experience

Tel: 07769 315244

Email: flowkiplumbing@gmail.com

[@flowkiplumbingandheating](https://www.facebook.com/flowkiplumbingandheating)



PHOENIX CHIMNEYS

*Chimney Sweeping and
Log Burner Installation*

Your chimney could be damaged or blocked with birds nests. If so it could be a fire risk and may lead to deadly carbon monoxide fumes leaking into your home.

Now is the time to get it checked.

We cover North Devon, West Somerset, Exmoor and North Cornwall. We have £5m Public Liability Insurance and certificates are issued to confirm work.

The services we provide are:

- Full sweeping service to all chimneys including Rayburns, Agas and Stanleys.
- HETAS registered installer of wood and multifuel burners.
- Service and repairs.
- Gas and smoke detectors supplied and fitted.
- Chimney stack repairs
- Supply and fit all types of cowls, bird guards and chimney pots.
- Landlord and holiday home owner solid fuel appliance safety checks issued.

www.phoenix-chimneys.co.uk

Call to arrange a no obligation site visit

01271 855543 or 07956 866593

EXMOOR 
CHIMNEY SWEEPS

CLEAN, EFFICIENT
& FRIENDLY SERVICE

FULLY INSURED

MEMBERS OF THE INSTITUTE OF CHIMNEY SWEEPS

01271 862872 or 07800770971

email: exmoorchimneysweeps@yahoo.co.uk

Estd. 1989

I.C.S.



Your Fyrex Team



Scott Maynard & Jenny Beer

Between us, we have more than 30 years of experience, providing businesses, establishments and individuals with unbeatable fire protection products and services. Now, as Fyrex, we're excited to bring all that experience, directly to our local community.

When your safety, the safety of your staff and the safety of your customers matters. Trust **experience**. Trust **expertise**. Trust **Fyrex**.

info@fyrex.co.uk

01271 611081

www.fyrex.co.uk



Fyrex
FIRE PROTECTION SERVICES



FIRE EXTINGUISHERS | FIRE SAFETY TRAINING
SERVICING AND MAINTENANCE | FIRE SAFETY SIGNAGE



schüller®
kitchens for life

**New for
2026!**

SPECIAL OFFER - FREE DISHWASHER*
FOR ALL NEW KITCHENS ORDERED IN JAN & FEB



**EX-DISPLAY
APPLIANCES
FOR SALE**

ENQUIRE FOR
FURTHER DETAILS



Visit us at...

Unit 1 & 5 Vale Yard,
Ford Road, Wiveliscombe,
Taunton, Somerset, TA4 2RE.

live, love, cook!

T: 01984 624700
www.homefrontdesign.uk.com

schüller®
kitchens for life

Gallery

Miele

Symphony®

AEG

Quooker®

elica

* MINIMUM SPEND APPLIES AND SUBJECT TO TERMS & CONDITIONS

EXMOOR FASCIAS

TRADE COUNTER

SUPPLYING THE TRADE AND PUBLIC

- PVCu Windows, Single Doors, French Doors, Patio Sliders, Vertical Sliders, Secondary Glazing
- Aluminium Windows, Doors, Lanterns, Bi-folding Doors, Roofs
- Single, Double and Triple Glazed Units
- PVCu Fascias, Soffits, Bargeboards, Dry Verge
- PVCu Rainwater Goods
- Window & Door Hardware
- Shower Boards
- Cladding
- Fixings, Sealants & Adhesives

Phone: 01271 321600 or Email: tradecounter@exmoorfascias.co.uk

COLLECT FROM OUR TRADE COUNTER OR WE CAN DELIVER

ROLLE QUAY, BARNSTAPLE, EX31 1JE

www.exmoorfascias.co.uk

KEEP IT CLEAN AND TIDY PRIVATE HOUSE CLEANING



ALISON HUXTABLE

07890 321610

*Debbie
Wells*

PAINTING & DECORATING

Tel: 01598 753682 Mob: 07531 118191

Fully Insured • City & Guilds Qualified

ROOFING K.G. DYER AND SONS LTD.



FREE AND
COMPETITIVE
QUOTATIONS

All works carried out by Professional
and Qualified Tradesmen

01598 753504

07873 957158

www.kgdyerandsonsltd.co.uk

kirk@kgdyerandsonsltd.co.uk

6 CROSSMEAD, LYNTON, EX35 6DG

STEVE HOBBS



PAINTER AND DECORATOR
GENERAL MAINTENANCE



INTERIOR & EXTERIOR TILING
PAPER HANGING FULLY INSURED
LIGHT BUILDING WORK FREE ESTIMATES

46A LEE ROAD, LYNTON

07513 143443

DECORATORS

FREE AND COMPETITIVE QUOTATIONS

K.G. DYER AND SONS LTD.

01598 753504

07873 957158

www.kgdyerandsonsltd.co.uk

kirk@kgdyerandsonsltd.co.uk

6 CROSSMEAD, LYNTON, EX35 6DG

K.G. DYER AND SONS LTD.

LOCAL BUILDING CONTRACTOR

Tel/Fax: 01598 753504 Mob: 07873 957 158

SPECIALISTS IN ALL BUILDING REQUIREMENTS

ROOFING · STONEMASON · JOINERY · PLASTERING
SKIMMING · EXTENSIONS · NEW BUILD
RENOVATION AND LIMESWORK · DECORATING

Winners of the
Redland Roofing
National
Craftsmanship
Award

www.kgdyerandsonsltd.co.uk
kirk@kgdyerandsonsltd.co.uk

Winners of the
Redland
Construction of
Excellence
Award

6 CROSSMEAD, LYNTON, DEVON, EX35 6DG

RICHARDS TELEVISION



YOUR LOCAL ELECTRICAL STORE
we sell practically anything with a plug!



SATELLITE & AERIAL
Installations and Repairs

Family owned Competitive prices
Friendly service Free local delivery

VISIT OUR SHOP AT

King Street, Combe Martin, EX34 0AG
or call us on 01271 882633
richardstelevision.co.uk



NEED AN ELECTRICIAN?

LYN ELECTRICS

Call **MARK SINCLAIR** today

07988 137 565
or
01598 753 531

• Fully Qualified • Testing, Inspection, Certification
• Competitive Rates • All Areas of Electrical Work

LOCAL - RELIABLE - EFFICIENT

Holloway Plastering Services

ALL PLASTERING WORK UNDERTAKEN

- Plastering
- Dry Lining
- Rendering
- Flat Ceilings
- Screeding
- Skimming
- Coving
- Vaulted Ceilings
- Thin Coat Silicon Render

ALL WORK GUARANTEED & INSURED



CALL: 07941 873607 or 01271 614443
www.hollowayplasteringservices.com
hollowayplasteringservices@gmail.com

TM Electrics
DOMESTIC • COMMERCIAL • INDUSTRIAL



Call Tommy on 07854 823748

Email: : TM-electrics@hotmail.com

EXMOOR FLOWERS

Welcome to our newly opened



FLORIST CAFE!

Specialising in coffee
tea / milkshakes
soft drinks / pasties
paninis / cakes
sausage rolls



Come and enjoy the taste

**Flowers for all occasions and plants
to fill your home with joy**



3 Queen Street, Lynton EX35 6AA
01598 753322
info@exmoorflowers.co.uk
www.exmoorflowers.co.uk

THE LYNTON CANDLE MAKER

SHOWROOMS AND STUDIO

Trading for 30 years 1996 to 2026



48 LEE ROAD, LYNTON, EX35 6BS

Office 01598 753321

Shop 01598 752009

<https://www.lyncandles.com/>

**High Quality Scented Candles
made on the premises**



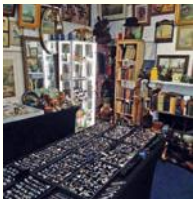
Antiques & More

Antiques & Jewellery Bought and Sold
Open Daily from 10am

5a Queen Street, Lynton EX35 6AA

Tel: 07552 484105

Email: antiquesandmorelynton@outlook.com



Clearance & More

House Clearance

Tel: 07553 005384

CAROLE HOLSGROVE *Interiors*

Painting &
Decorating
Curtains
Blinds
Hems
Alterations
LYNTON



07790 632459

email caroleholsgrove@gmail.com



DOGGY PLAY BARN

**Indoor secure fun for you and your Pooch
Agility equipment available too!**

07970 770 236



www.paulinespamperedpooches.co.uk
High Bullen Farm, Barbrook. EX35 6PH

NEW

**Speedy Dog Wash
TICK AND FLEA
treatment and blow dry
for only £10!**

No booking necessary.

**All products used are
BUGALUGS
gentle but
effective.**



**Our weekly vet clinic is now at
Lynton & Lynmouth Bowls Club
every Tuesday morning from 9:30am**



To arrange an appointment please telephone

**BARNSTAPLE
01271 344262**

**SOUTH MOLTON
01769 572175**

**ONLINE APPOINTMENT BOOKING
AVAILABLE FOR OUR LYNTON CLINIC**





Collecting Dog Henry, shown on the left with his owner John Bond at Woody Bay Station, is going to have a new trainee called Bertie.

Bertie (above right) is eventually going to be the next generation Railway Collecting Dog and will learn his trade by accompanying Henry.

Henry will be collecting at Woody Bay Station on Saturday 30 May, designated as 'Henry Day', when visitors are invited to bring their dogs to Woody Bay for some doggie fun and games. There is now the added attraction of having a cuddle with Bertie.



Having already featured on TV as a Railway Collecting Dog at Woody Bay Station, Golden Retriever Henry may soon be appearing in a family TV drama, based on the life and adventures of Black Retriever London Jack I, who collected at Waterloo for a Railway Orphanage from 1894-1901.

Tracing The Rails Productions, who featured Henry on TV last year, feel that London Jack's story should be told and are now looking for potential backers and investors to move the project forward. They have already produced some publicity posters, featuring Henry heavily disguised as black rather than golden. Anyone interested can contact Henry's owner, John Bond, at Woody Bay Railway Station.



Sandra Davies

Start of a New Chapter for the Lynton & Barnstaple Railway Project

Press Release issued April 2, 2026

The Lynton & Barnstaple Railway (L&BR) Trust and the Barnstaple & Yeo Valley Railway (B&YVR) Trust are pleased to announce the start of a new chapter for the last great narrow-gauge adventure in Exmoor and North Devon.

Both organisations recognise the scale of their joint ambition to restore the world-famous railway and understand that cooperation will be an imperative in realising this goal.

Therefore, both organisations are adopting a policy of active dialogue and cooperation to promote better the shared aims of rebuilding the former railway between Lynton and Barnstaple. This approach will be enabled via a regular joint working group which will report activity to their respective boards for any decision-making.

Giles Perkins, Chair of the L&BR Trust, said: “In the public’s mind there is only one historical Lynton & Barnstaple Railway and the two organisations working together to restore sections of the line can achieve so much more than separately. Over many years invaluable knowledge has been gained of how to build and operate a narrow-gauge heritage railway, expertise which should be capitalised upon. The two organisations share the same deep desire to see this unique narrow-gauge railway restored to a bigger operation for the benefit of all.”

Bruce Knights, Chairman of the B&YVR Trust, said: “This is really excellent news for both Trusts and all supporters of the former Lynton and Barnstaple Railway. A good dialogue with our friends at Woody Bay is essential and very welcome, in what promises to be a year of significant progress at the Barnstaple end of the old line. I am very optimistic that this will speed up progress towards what we all want to see, the rebuilding of the line from Barnstaple to Lynton.”

Below: Bratton Fleming Goods Shed 2026, Exmoor Associates

Right: Woody Bay Station 2026, Sandra Davies





10-16 The Avenue
Minehead
Somerset
TA24 5AY

Registered Charity No 1052714
Limited Company No 3149984

Coffee Morning in the Bar

Saturday 2 May 2026, 10.00 – 12.00

REGAL COMEDY NIGHT

Saturday 2 May – 7.30pm

Get ready for a night packed with fun, big laughs, and something a little different for The Regal Theatre. We're bringing you a top-class lineup from the very best of the UK comedy circuit, featuring four fantastic professional comedians guaranteed to keep you entertained all night long.

ROYAL BALLET & OPERA - EUGENE ONEGIN (The Metropolitan Opera LIVE)

Tuesday 5 May 2026 - 6:00pm

Following her acclaimed 2024 company debut in Puccini's *Madama Butterfly*, soprano Asmik Grigorian returns to the Met as Tatiana, the lovestruck young heroine in this ardent operatic adaptation of Pushkin. Baritone Igor Golovatenko reprises his portrayal of the urbane Onegin, who realizes his affection for her all too late. The Met's evocative production, directed by Tony Award-winner Deborah Warner, "offers a beautifully detailed reading of ... Tchaikovsky's lyrical romance" (The Telegraph).

ILLUMINATE - Spotlight

Friday 15 – Saturday 16 May – 7.30pm

We bring to the Regal Theatre a fun for all family dance show full of fabulously talented students from SDA! Everything from ballet, tap, commercial dance, lyrical and acro, there is something for everyone!

The Regal Film Society Screening - TBC (Cert 15)

Tuesday 19 May 2026 - 7:30pm

Exhibition on Screen - FRIDA KAHLO: THE MAKING OF AN ICON

Thursday May 21, 2026, 7.30pm

Who was Frida Kahlo? Everyone knows her face but who was the woman behind the bright colours, the big brows and the floral crowns? Take a journey through the life of a true icon, discover her art, and uncover the true story of her rebellious, passionate and turbulent life.

Tickets for all events may be booked in advance online at <https://regaltheatre.co.uk/whatson> or from the Box Office (Tel 01643 706430) between 9.30am and 12.00pm Monday - Saturday

LYNTON CINEMA

Lee Road, Lynton EX35 6HN

Enquiries / Booking Line 01598 753397

Friday 1 May for 7 days at 8.00pm

Matinee Monday 4 May at 2.30pm

HOW TO MAKE A KILLING

GLEN POWELL, MARGARET QUALLEY *Disowned at birth by his obscenely wealthy family, a blue-collar will stop at nothing to reclaim his inheritance, no matter how many relatives stand in his way.*

15 105 minutes



Friday 8 May for 7 days at 8.00pm

Matinee Monday 11 May at 2.30pm

GLENROTHAN

ALAN CUMMING, BRIAN COX *Comedy drama in which a man returns after 35 years to his family's Highland Distillery to reconcile with his brother.* 12A 99 minutes



Friday 15 May for 7 days at 8.00pm

Matinee Monday 18 May at 2.30pm

THE DRAMA

ZENDAYA, ROBERT PATTINSON, ALANA HAIM *A happily-engaged couple are put to the test when an unexpected turn sends their wedding week off the rails.* 15 105 minutes

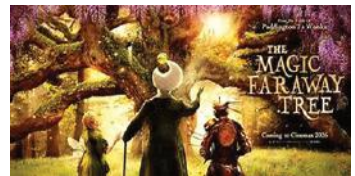


Friday 22 May for 7 days at 8.00pm

Matinees on Saturday 23, Sunday 24, Monday 25 May at 2.30pm

THE MAGIC FARAWAY TREE

ANDREW GARFIELD, PHOENIX LAROCHE, JESSICA GUNNING, JENNIFER SAUNDERS *A modern family relocates to the countryside where the children discover a magical tree with eccentric residents. They're transported to fantastical lands, rekindling their family bond through adventures.* PG 110 minutes



Friday 29 May for 7 days at 8.00pm

Matinee Monday 1 June at 2.30pm

THE SHEEP DETECTIVES

HUGH JACKMAN, NICHOLAS BRAUN, EMMA THOMPSON, PATRICK STEWART *Every night a shepherd reads a murder mystery, pretending his sheep can understand. When he is found dead, the sheep realise at once that it was murder and think they know everything about how to go about solving it.* PG 109 minutes



Friday 5 June for 7 days at 8.00pm

Matinee Monday 8 June at 2.30pm


MADFABULOUS *2026 British historical drama film about Henry, 5th Marquess of Anglesey.*



COME ALONG AND WATCH

LYNTON LAWN BOWLS CLUB

HOME FIXTURES FROM OUR NEW SPECTATORS VIEWING PLATFORM



LYNTON & LYNNMOUTH BOWLS CLUB

APRIL 11 TH PRESIDENT	JULY 1 ST WILTON
APRIL 28 TH ASHLEIGH	JULY 3 RD UTD SERVICES
APRIL 30 TH PORLOCK	JULY 18 TH ILFRACOMBE
MAY 30 TH COMBE MARTIN	AUGUST 16 TH SOUTH MOULTON
JUNE 8 TH BRAUNTON	AUGUST 21 ST VICTORIA PARK
JUNE 10 TH BYEWAYS	SEPT 3 RD PORLOCK (GK & T.POT)
JUNE 17 TH MINEHEAD	SEPT 10 TH BIDEFORD
JUNE 24 TH ROCK PARK	SEPT 12 TH PRESIDENT

All games start at 2pm, weather permitting

CASH PAID FOR YOUR OLD VINYL COLLECTION

HOME VIEWING CASH ON COLLECTION
A-SIDE TO B-SIDE
BESIDE THE SEASIDE
RECORD SHOP



PPA2BGC@GMAIL.COM 07771 911782
19 QUEEN STREET LYNTON EX356AA



BRENDON & DISTRICT SHOW

August 9th 2026



THE RADIO MUSEUM


RADIO, TELEVISION,
BROADCASTING AND
RECORDING EQUIPMENT

Neil Wilson Curator

5 Anchor Street, Watchet
Somerset TA23 0AZ

01984 639154
07544 620621

neil@radiomuseum.org.uk
www.radiomuseum.org.uk




Take a trip back to
your Childhood
& visit LYNTON'S

There's Something
for everyone!

TOY MUSEUM & SHOP

Find us on Lee Road
(just past the Post Office)

01598 752096
www.lyntontoymuseum.co.uk

 Lynton Toy Museum

Wimbleball Lake COUNTRYSIDE FAIR

Brompton Regis, Dulverton TA22 9NU
Sunday 17 May 2026
11am to 4pm

craft & trade stalls • food and drink • nature trail
classic cars • watersports

Part of Exmoor Nature Festival 2026

Free entry
and free
parking



wimbleballtrust.org.uk
01566 771930
#ItsYourOutdoors

LYNTON AND LYNMOUTH STEAMPUNK MARKET

Saturday 9th May 2026



Market on Cliff Railway Road Lynton
and in the Grounds of Garson House, Lynton

LYNMOUTH



16th MAY

Start Time: Midday
A Day of Maritime Capers
and the infamous

SEAGULL RACE

Hosted by
Lynmouth Sailing Club

◆ LIVE SHANTY CREW PERFORMANCES ◆

- ◆ Lynmouth Shanty Crew ◆
- ◆ DZ Buoys ◆
- ◆ Applecorders ◆
- ◆ Figurehead ◆

◆ Sea songs ◆ Maritime mischief ◆ Family fun ◆ Coastal celebrations ◆

LYNMOUTH HARBOUR



NATIONAL GARDEN SCHEME
Gardens Open For Charity

Brendon Gardens

Brendon, Lynton, EX35 6PU

Barn Farm • Brendon Barton • Hall Farm •
Higher Tippacott Farm

Sunday 3 May

Monday 4 May

12 - 5pm

Combined entry £6 Children free

Refreshments, plants, bric-a-brac plus a display of
vintage telephones & toys at Higher Tippacott Farm



DOGS WELCOME



PLANTS FOR SALE

LUNCHES

TEAS



AUDIOS



More information at ngs.org.uk

DOTS

**& SLOTS
BINGO**

**SPECIAL
OFFER**

WEEKEND MONEY MATCH OFFER!

25

6

**Become a Member &
Get a £10 Bingo Cash Match!**

**DOUBLE THE FUN, DOUBLE
THE CHANCES!**

The Avenue, Minehead

Offer applies weekends only (Fri-Sun). Exclusively to new members only. Deposit £10, get £10 Bingo credits. Must stay a member for 4 weeks. Credit added at first time of play. Please see our social media for full T&Cs



@DOTSANDSLOTSBINGO



@DOTS&SLOTS BINGO



18+

Please Gamble Responsibly
www.BeGambleAware.org

TARKA VALLEY RAILWAY

The original Tarka Valley Railway(TVR) Group was set up in 2008, obtaining a lease from Devon County Council, for the last remaining section of the railway, situated alongside the platform of the old Torrington Station (which had by then become a licensed cafe/restaurant, trading as the Puffing Billy). The goal of the group was to reinstate the rail-line from Torrington Station to Bideford as a Heritage Railway. This is a mammoth undertaking as the old line had already been replaced by the Tarka Trail, a popular pedestrian walkway and cycle path. From the early days the importance of the Tarka Trail was fully appreciated. Not only by the walkers and cyclists but by the TVR group itself who understood that it would bring visitors to Torrington and hopefully they would utilise the rail attraction itself. The un-incorporated group became a registered C.I.O (Charity number 1162632) on 13 July 2015. Since then a great deal has been achieved by its volunteers with more expansion plans in progress.

We have two engines and a Pacer; a John Fowler Type 400 4000001 'Progress', a Ruston&Hornsby LPSE 544998 'Torrington Cavalier' and a Class 143 2 car 'Pacer' 143617 that is named after Rod Garner who helped to establish the original group. The first Phase of the re-building 300 yards in length up to Bridge 135 was completed at the end of 2022.

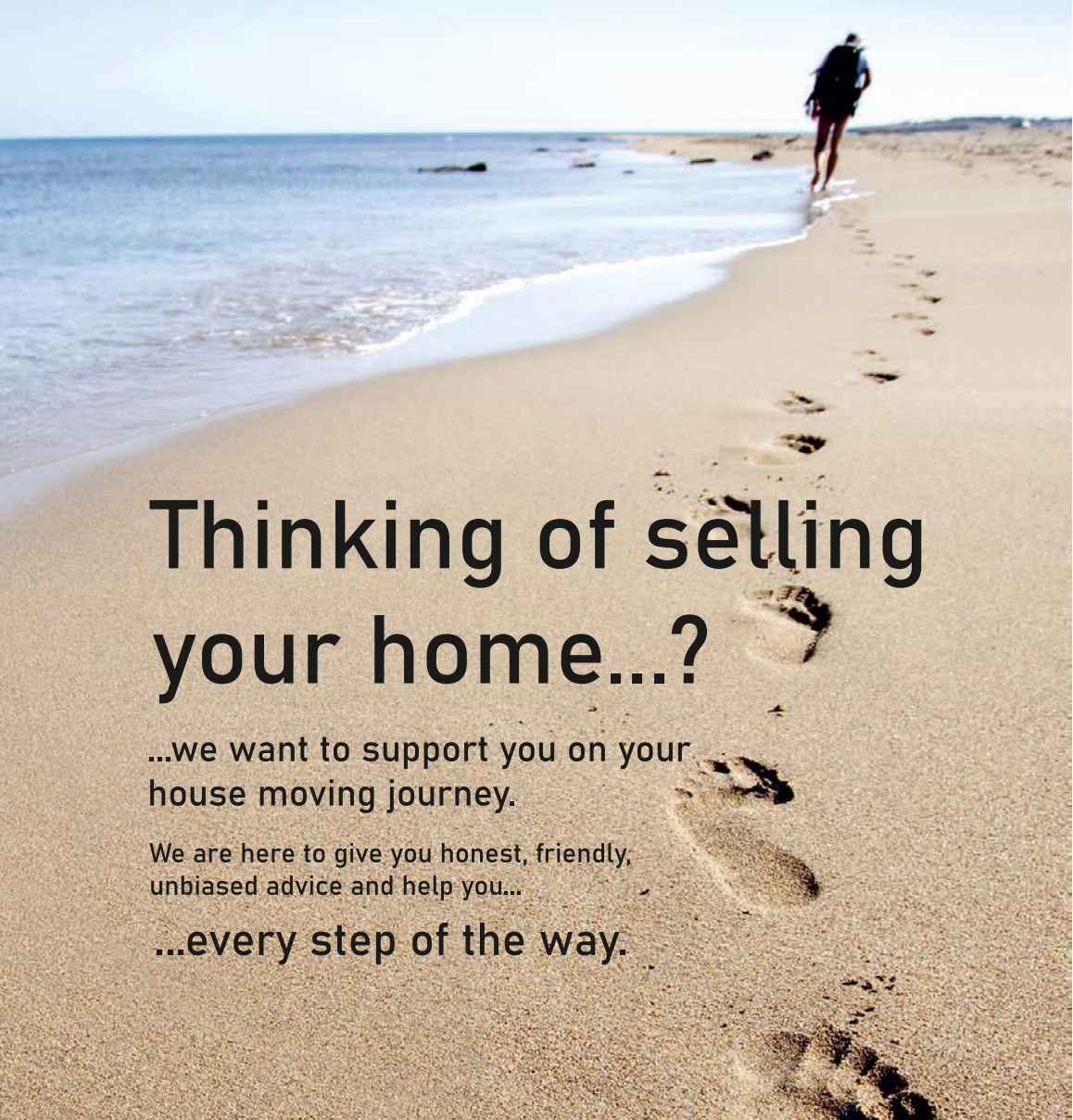
We became an approved Heritage Railway in December 2023 when the ORR approved and listed us as such. We have also established a new shop, information and booking office. Our first passenger train ran on 5 August 2023. Our restoration team have also restored the 1959 Brake Van which will shortly be used to give regular passenger rides. The 1955 clay hood, under restoration is also well on the way to completion.

The next big job is to restore the British Railway (S) MK1 TSO S3924. Its building was completed in 1955 for use on the London Waterloo to Exeter line. It is planned for the TSO to be refurbished inside and out then made into a Museum for a number of artifacts from our collection. It is intended to rebuild the Signal Box. The original Torrington Signal Box was built in 1872 when the line was extended from Bideford. The box was stone built using lime mortar and was mainly stone with small windows. When the line was extended to Meeth and Halwill in 1925 the box stone walls were reduced in height and extended using cement. Larger windows were installed giving a more LSWR & Southern railway appearance. When the line closed to passengers in 1965 or shortly after all signals and points were disconnected and the token instrument transferred to the station building. Later the line was operated as a siding from Barnstaple Junction and the box demolished around 1980. It is our intention to rebuild the box, this is likely to cost in the region of £200,000.

A number of wildlife surveys have been carried out in the past year with the view of gaining consent for Phase 2 of our re-building from Devon County Council. This will be from the Bridge 135 to just before the River Bridge with a platform for access to the Rolle Canal and Torrington Commons. This is likely to cost in the Region of £400,000. We are always looking for assistance from more volunteers. We are planning to offer site visits to anyone who is interested in the railway's future progress on Thursdays and the third Saturday each month. If you would like to take part in one of these site visits please contact us either by email or on our website tarkavalleyrailway@gmail.com - www.tarkavalleyrailway.org
Parties of visitors can be organised by special arrangement.

Donations towards the railway's future can be made by cheque or bank transfer.
20-04-59 Account No: 33321045.





Thinking of selling your home...?

...we want to support you on your
house moving journey.

We are here to give you honest, friendly,
unbiased advice and help you...

...every step of the way.



WOOLLIAMS

Property Services

FULLY INDEPENDENT LOCAL ESTATE AGENTS

Call us today 01271 328586

www.woolliamspropertyservices.com | sales@woolliamspropertyservices.com

2 Queens House, Queen Street, Barnstaple, EX32 8HJ

facebook

