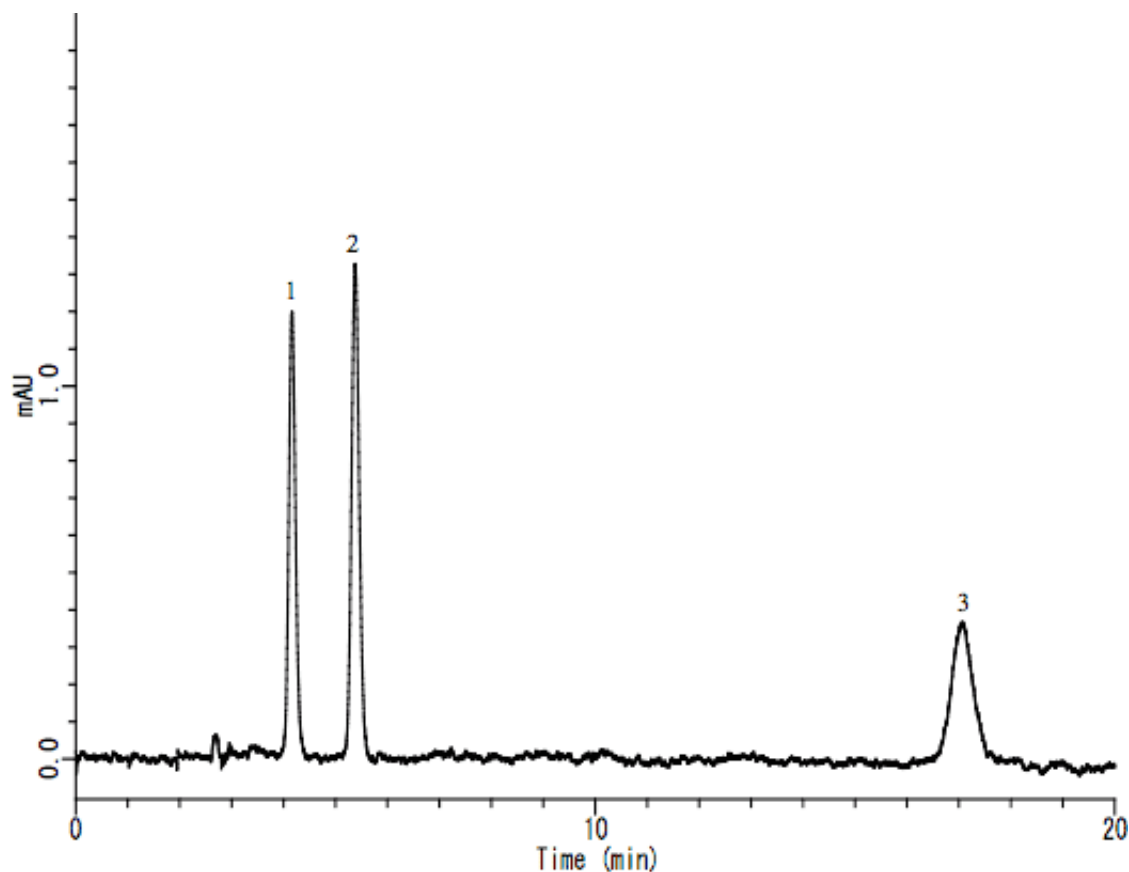


InertSearch™ for LC

Inertsil® Applications

Analysis of Retinol in Food

Data No. LA535-0696



System : GL-7400 system

Column : Inertsil ODS-3 (5 μ m, 250 \times 4.6 mm I.D.)

Column Cat. No. : 5055-12611

Eluent : A) C₂H₅OH

B) H₂O

A/B = 95/5, v/v

Flow rate : 1.0 mL/min.

Col. Temp. : 40 °C

Detection : UV 325 nm (GL-7450 UV Detector)

Injection Vol. : 20 μ L

Sample :

Solutes : 1. Retinol 100 μ g/L

2. Retinol acetate 100 μ g/L

3. Retinol palmitate 100 μ g/L