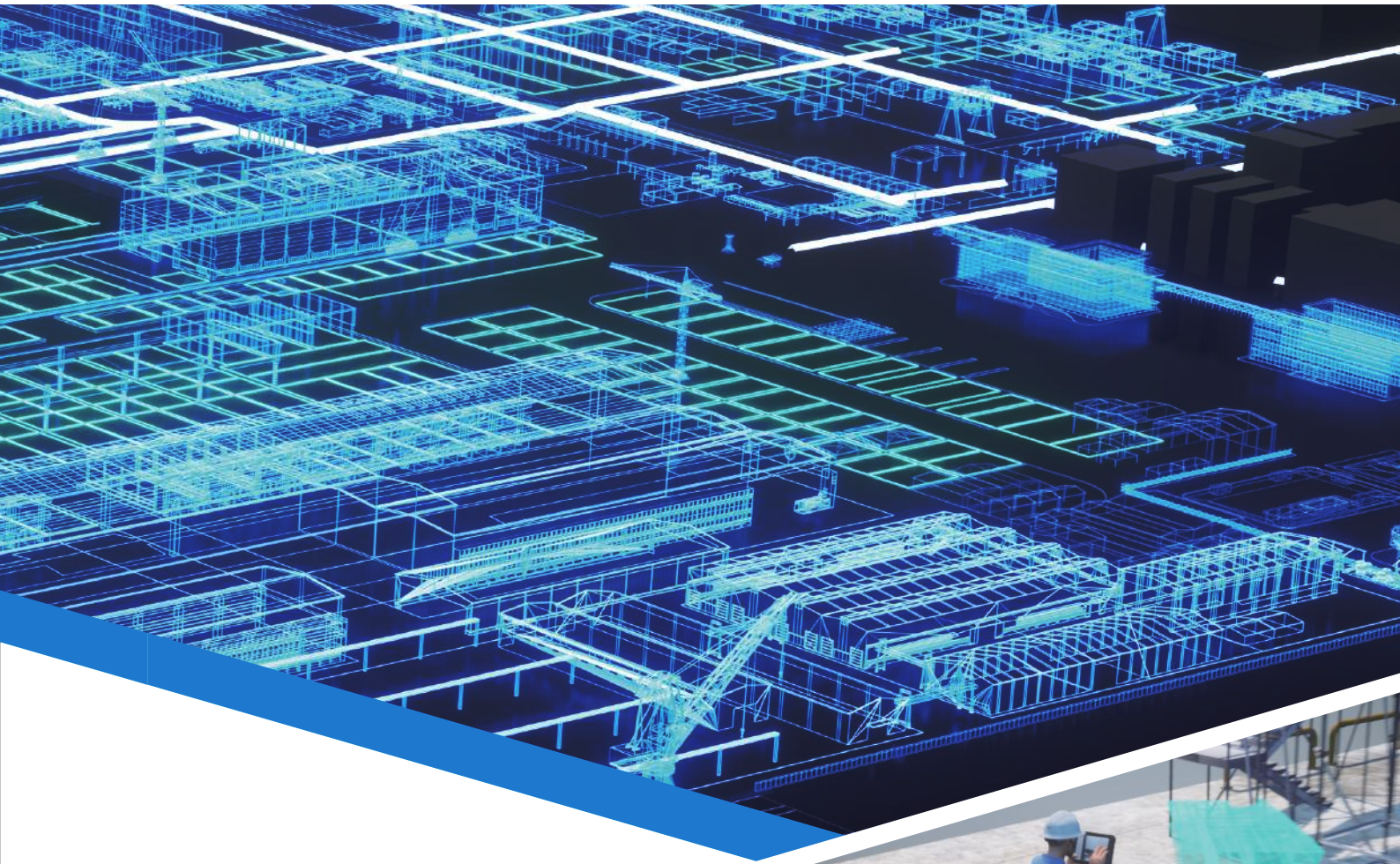




ChiaTang Info. Co., Ltd.



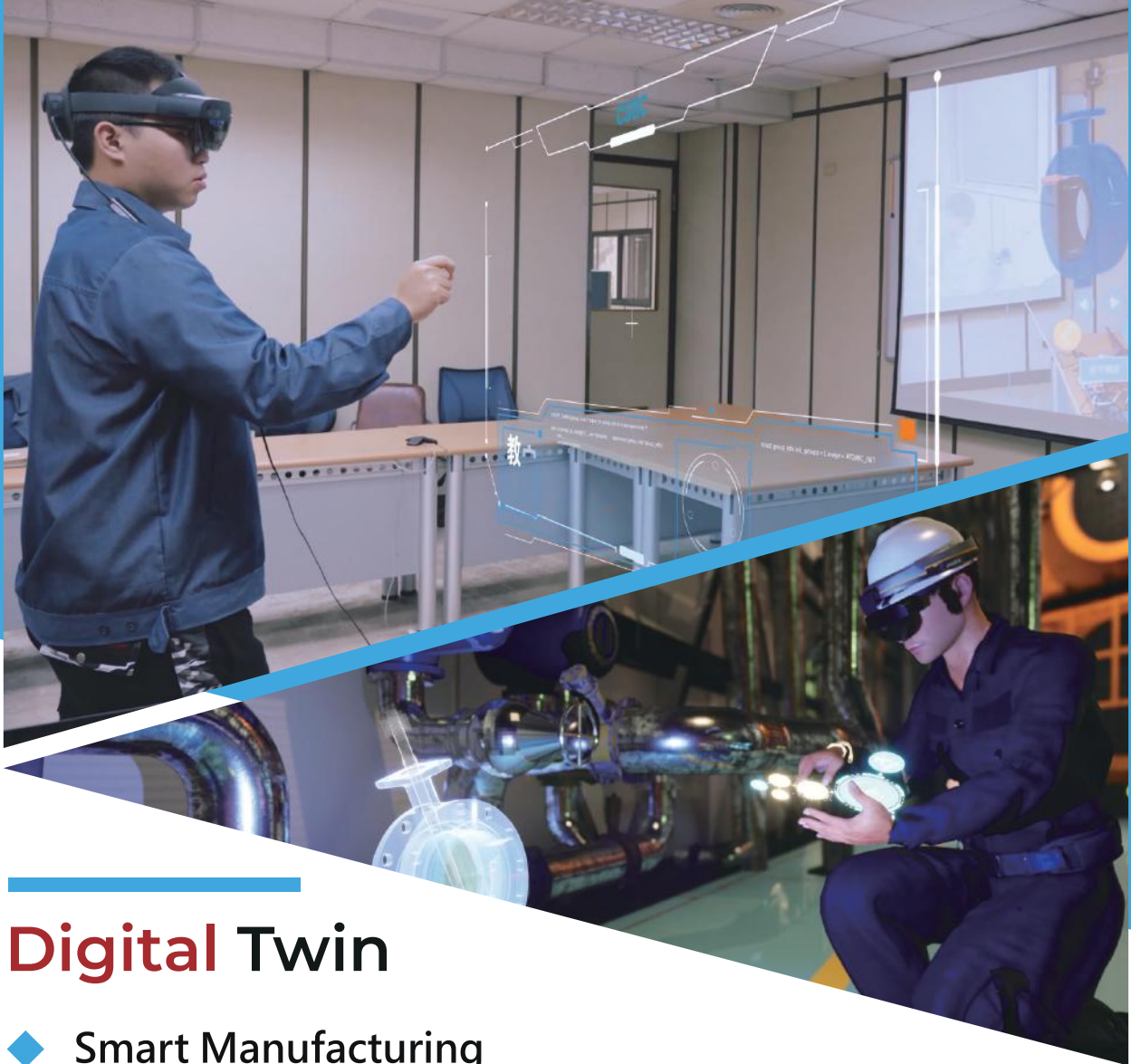
CT INFO.

Leverage the capabilities of Extended Reality (XR).
ChiaTang Information is your trusted partner for immersive technology,
specializing in expanding XR applications and optimizing Digital Twin
solutions for diverse industries.

Our Website

<https://www.ctinfomedia.com/>





Digital Twin

◆ Smart Manufacturing



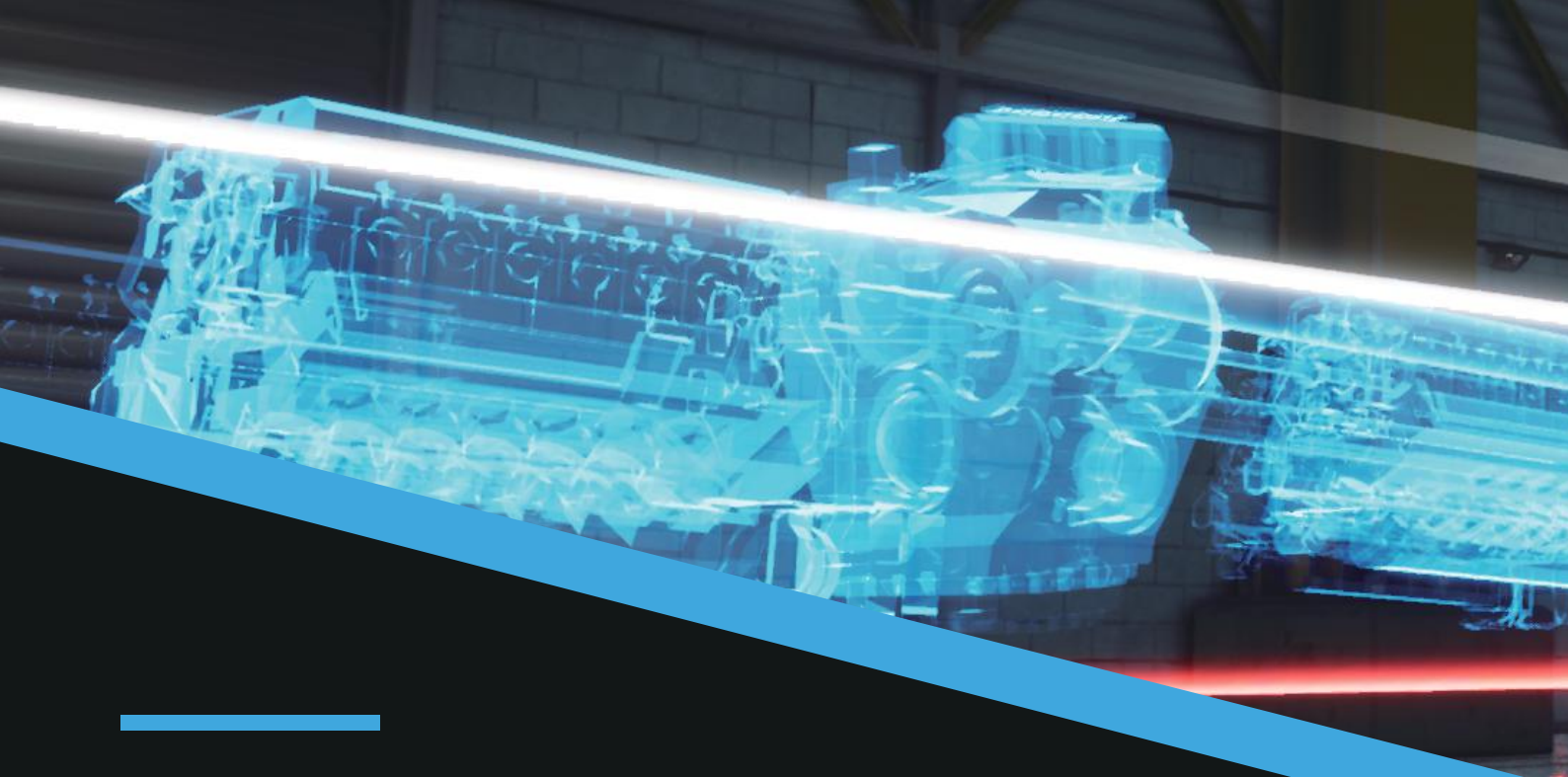
XR Technologies for Manufacturing

Operational Visibility (Digital Boardroom) Improve visibility across connected factory assets and processes to increase productivity of equipment and labor across sites.



Connected & Frontline Worker

Empower worker workforce with digital contents and XR devices that offer the best experiences for collaboration and productivity.



Applications



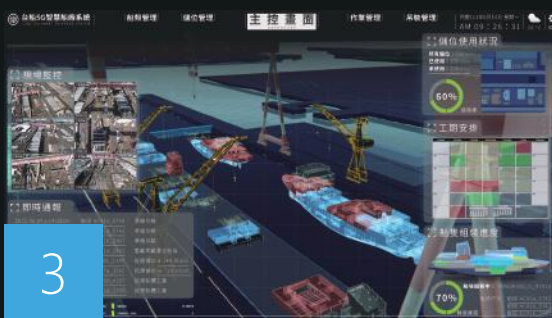
1 Professional Equipment Training

Empower worker workforce with digital contents and XR devices that offer the best experiences for collaboration and productivity.



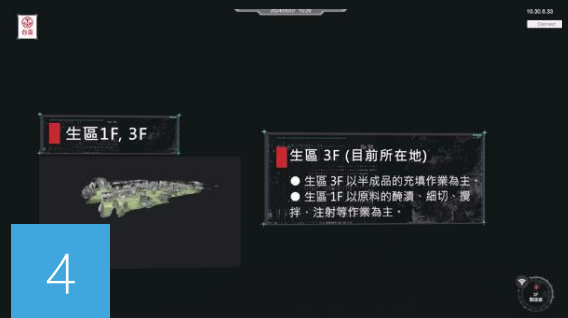
2 Situational Training

Organizes assigns roles, sets checkpoints, and creates SOPs for safe employee education in a trial-friendly environment.



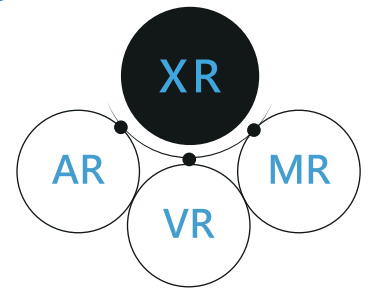
3 Smart Dashboard

Utilizing 5G and AIoT technology to develop a smart shipyard system.



4 Smart Patrol

Meat Processin AR Navigation & Inspection
5G AR transforms meat processing with immersive tours, enhancing supply chain.



Immersive **XR** Solutions

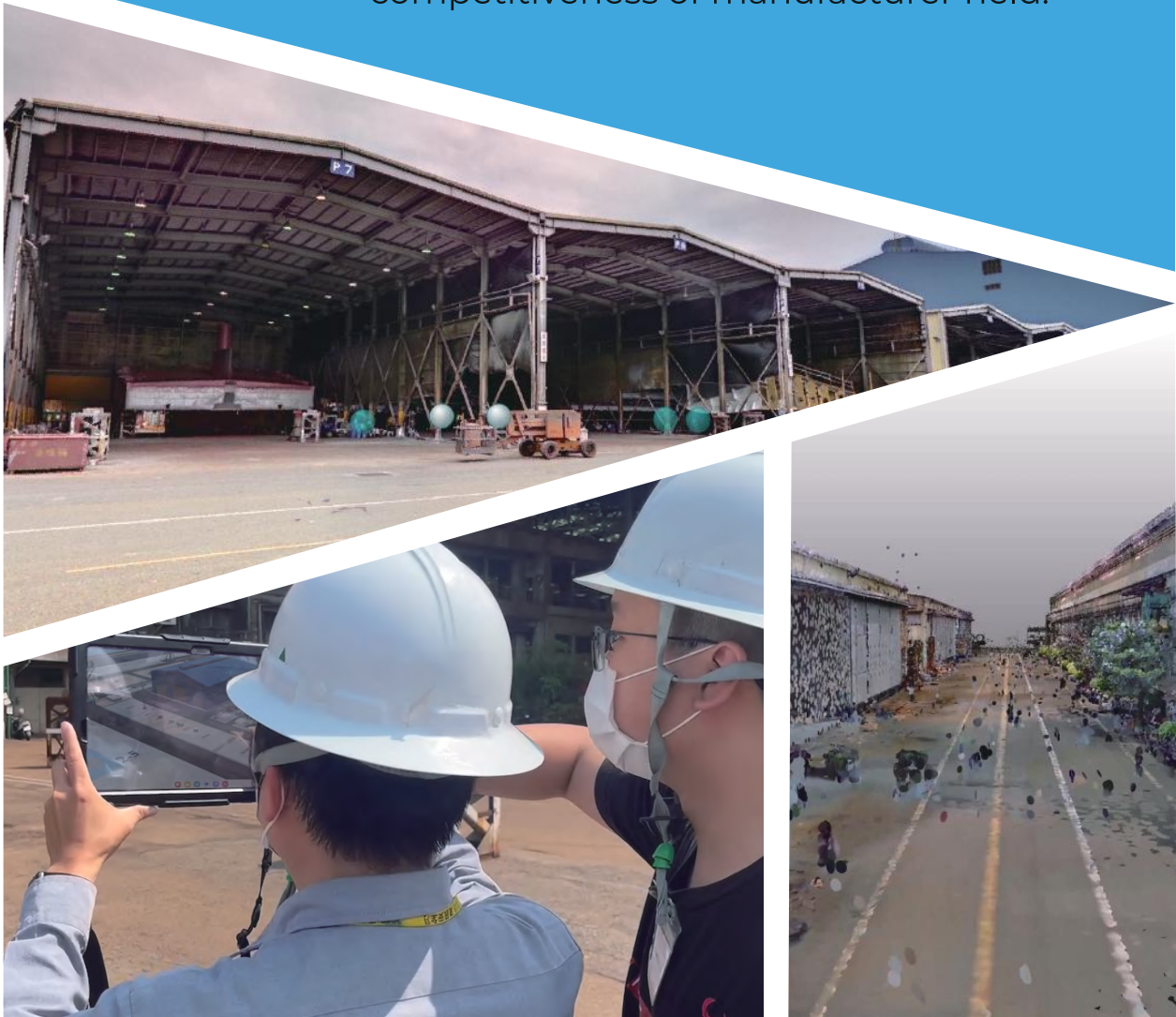
Offers services for design review, training, maintenance, and operations, providing clients with immersive experiences and solutions.

CT METAPRISE



Virtual GIS: 3D Geographic Information System

We utilize three-dimensional technology to provide precise geographic information for ship construction and maintenance. It integrates dock facilities, vessel data, and outdoor weather information to optimize ship design, production, and operation processes. Through visualization and spatial analysis, this system offers more efficient ship management and decision support, enhancing the efficiency and competitiveness of the manufacturer field.





Innovations for **Smart Industry**

The integration of Extended Reality (XR) technology into smart manufacturing is revolutionizing the industrial landscape. By creating immersive digital environments, workers can interact with complex data and machinery in intuitive ways, enhancing efficiency and safety.

Our **Partner**



Contact Us



Director / ChiaHung, Yeh ▶ hungyeh@ctinfomedia.com
Customer Service ▶ contact@ctinfomedia.com



3F., No.25, Chenggong 2nd Rd., Qianzhen Dist.
Kaohsiung City 806614, Taiwan (R.O.C.)



+886 971 126 501

