



2025

# QX50



↓ SWIPE

# Jump to a Section

Tap an arrow to skip to section

---

## Design

Exterior, Interior, Space & Cargo



---

## Onboard Tech

Comfort & Convenience, Infotainment



---

## Drive Tech & Performance

Driver Assist Technology, Performance



---

## Style & Specs

Style, Specs, Trims



---

## Accessories

Exterior, Interior, Cargo, Lighting & Tech, Pet



# Design

Exterior



Interior



Space & Cargo



Back to Menu



Build & Price →

POWERFUL ELEGANCE

Designed To  
Turn Dreamers  
Into Doers



BACK TO SECTION

**POWERFUL ELEGANCE**

QX50 is designed to move you forward in unabashed aestheticism. The **powerful proportions and posture** create a sense of dynamic motion that's carried through to the strong presence and **commanding stance**, offering a powerful design statement and an **elevated sightline** for a clearer view in traffic and when navigating the city or parking.



Commanding stance

**POWERFUL ELEGANCE**

Integrating with the A-pillar, the **clamshell hood** creates an optical illusion of a longer-looking hood while maximizing interior space. **Sharp character lines** connect the hood line down the length of the vehicle at a dramatic angle for a powerful visual identity. The resulting tension is released in the simple lines on the tail end of the profile for a holistic, harmonious visual appeal from all angles.



QX50

Exterior

DESIGNED TO PERFORM

# Commanding yet Agile



**DESIGNED TO PERFORM**

Large **20" dark-painted and machine-finished wheels**, standard on the SPORT trim, enhance the vehicle's commanding stance and add to its SUV sportiness. Yet the wheels are not oversized, so your ride remains as smooth as it is sleek.



20-inch dark-painted and machine-finished wheels<sup>1</sup>

**DESIGNED TO PERFORM**

Furthering the fluidity of your commute, the **aerodynamic design** of the hood, A-pillar, tailgate and enclosed underbody allows air to flow around the vehicle smoothly, helping to stabilize the vehicle during high-speed driving.



Aerodynamic design

QX50

Exterior

DESIGN CUES

Sculpted With  
Unmistakable Style



**DESIGN CUES**

Style is best expressed often, balancing the bold with the subtle. QX50 is a daring collection of the striking design cues that make an INFINITI instantly recognizable. Take the signature **crescent-cut D-pillar**, which arcs forward to emphasize motion. The unique shape defines the dynamic profile and creates a sense of energy, even when standing still.



Crescent-cut D-pillar

**DESIGN CUES**

Inspired by the human eye, the signature **LED headlights and taillights** peer down the road ahead with a pensive and purposeful gaze that disperses light evenly to ensure an unmistakable presence from any angle. Extending this bold serenity is the **double-arch grille**, with its dynamic three-dimensional design that visually alludes to the powerful engine it guards.



**DESIGN CUES**

Small touches unify big ideas. Available **black exterior accents** are placed strategically yet simply, as on the roof rails,<sup>1</sup> side-window surrounds and exhaust outlets and add visual reminders of a daring theme that has been thoughtfully explored.<sup>2</sup>



Black exterior accents<sup>1</sup>

QX50

Interior

ENERGETIC COMFORT

Individually Curated,  
Collectively Shared



**ENERGETIC COMFORT**

The interior of the QX50 revolves around the driver while maintaining a connection to others in the vehicle. The **driver-focused armrest** and **diagonally divided center console** are ergonomically positioned for seamless driver access, with an asymmetric design that creates a **wide stage dash** while visually connecting the driver and passenger.



Driver-focused armrest



Diagonally divided center console



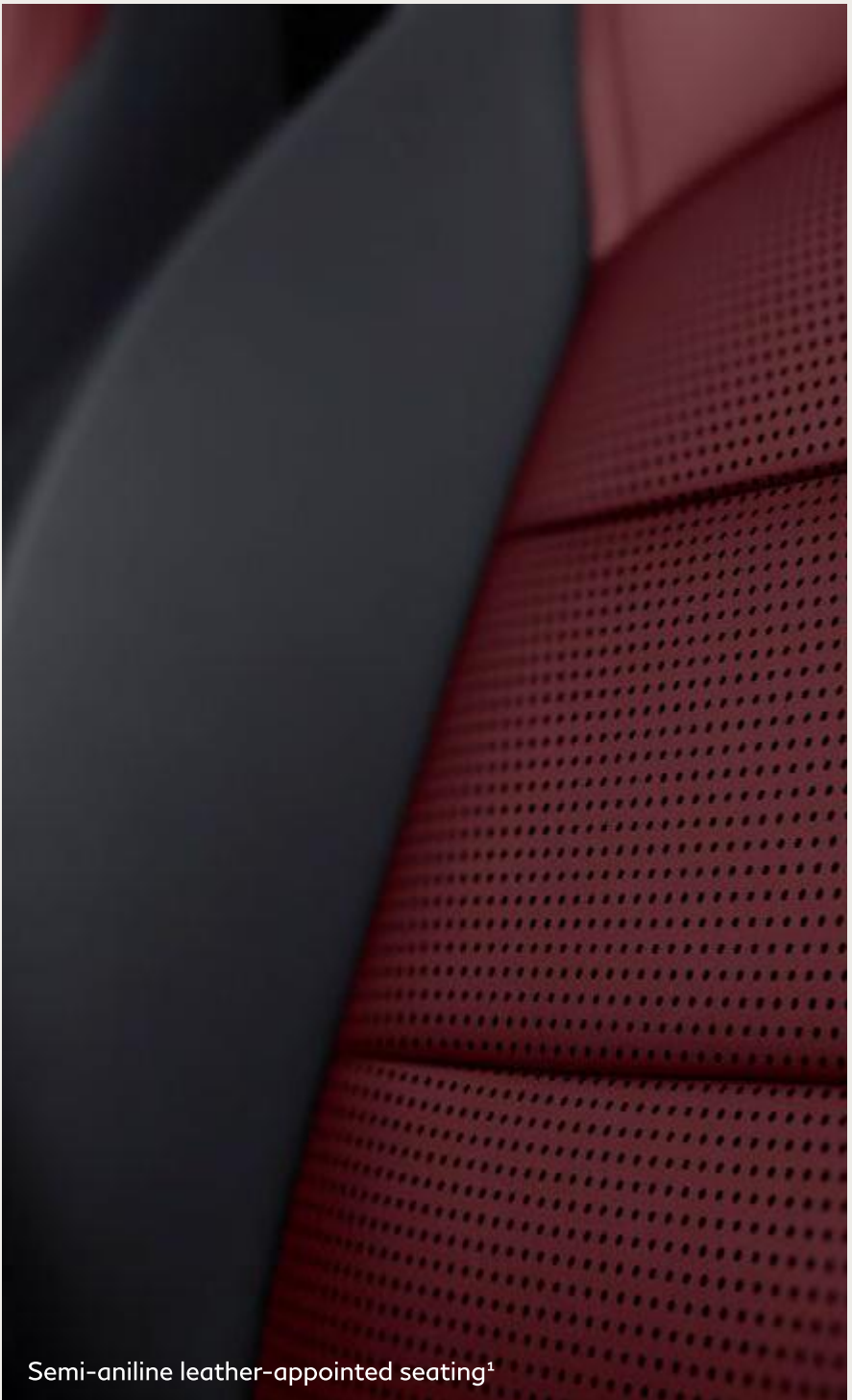
DESIGN INTRICACIES

Crafted for an  
Embodied Journey



## DESIGN INTRICACIES

Designing an interior that's tailored to human touch starts with hand-crafted and tailored finishes. Sink into the **semi-aniline leather-appointed seating**, which features a laser-cut stitch pattern molded to the curves of QX50.<sup>1</sup>



Semi-aniline leather-appointed seating<sup>1</sup>

## DESIGN INTRICACIES

The front door's tweeter speaker grille, one of several speakers comprising the transportive **Bose Premium Audio** system, visually complements the **Black Aluminum trim accents** that it rests beneath.<sup>1</sup> The concentric circle dot pattern of the metallic speaker grille offers both aesthetic and auditory enhancement, completing a cabin that indulges all the senses.<sup>1</sup>



Bose metallic speaker grille<sup>1</sup>

QX50

Space & Cargo

SPACE & CARGO

Welcome  
the World In



**SPACE & CARGO**

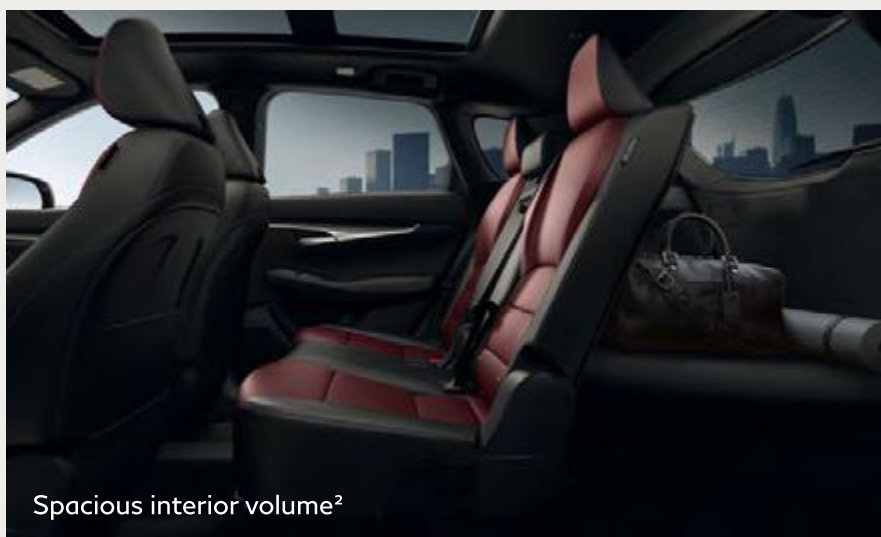
Create space for life. The glass **panoramic moonroof** stretches magnificently across the first and second rows.<sup>1</sup> The power sunshade easily slides open to offer both front and rear passengers a dramatic sky view and flood the interior with natural light, accentuating the cabin's sense of space.<sup>1</sup>



Panoramic moonroof with power sunshade<sup>1</sup>

**SPACE & CARGO**

Sometimes, you need space for guests and other times for cargo, and QX50 has the flexibility to comfortably accommodate either at a moment's notice. **Split-folding, sliding and reclining second-row seats** allow you to maximize space where you need it, with a **maximum cargo volume of up to 65.1 cu. ft.** with rear seats folded.<sup>2,3</sup> The sliding function allows for 5.6 in. of adjustment, with up to 38.7 in. of maximum rear leg room.<sup>4,5</sup> When your hands are full and you're on the go, quickly kick your foot under the rear bumper, and the available **Motion-Activated Liftgate** opens for you.

Spacious interior volume<sup>2</sup>Motion-Activated Liftgate<sup>1</sup>

# Onboard Tech

Comfort & Convenience



Infotainment



Back to Menu



Build & Price →

QX50

Comfort & Convenience

TOUCHES OF COMFORT

# Enter Flow State



BACK TO SECTION

**TOUCHES OF COMFORT**

Indulge your tastes and your sense of comfort. When you go far, **Zero Gravity Seats**, inspired by NASA research, support you, helping you to stay comfortable in the moment and feel fresh on arrival.<sup>6</sup> **Dual Zone Automatic Climate Control** allows front passengers to set and achieve their own standard of comfort by automatically maintaining the desired temperature for each zone.

Zero Gravity Seats<sup>6</sup>

Dual Zone Automatic Climate Control

QX50

Comfort & Convenience



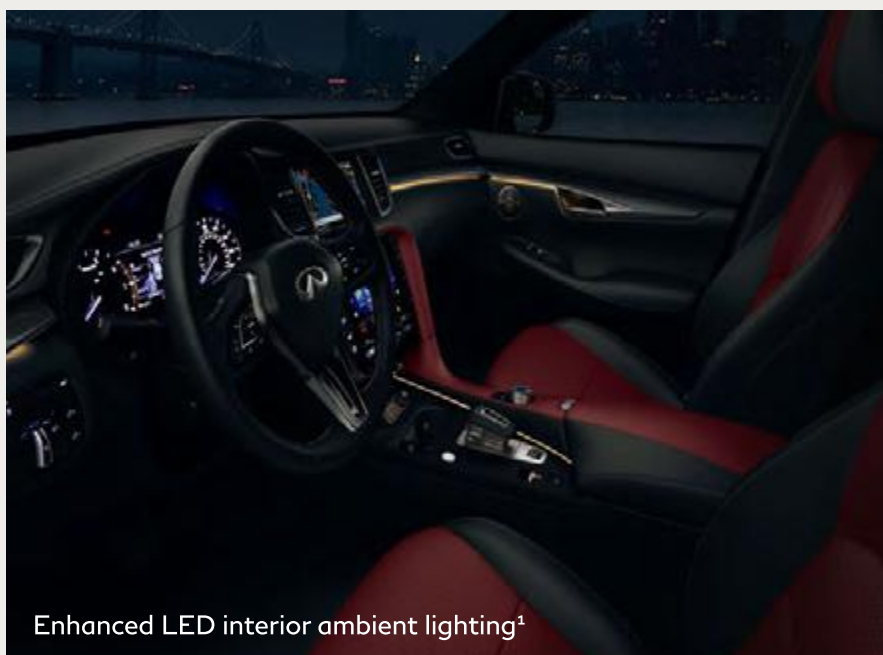
AUTOMATED CONVENIENCES

Imbued With  
Ambience



**AUTOMATED CONVENIENCES**

Cultivate that futuristic feeling with touches of technology that cater to your experience. With **Remote Engine Start**, you can start your vehicle from up to 200 feet away, so you can enter feeling less rushed and more centered.<sup>7</sup> Step into serenity as the **enhanced LED interior ambient lighting** softly illuminates the cabin, accentuating the trim and shapes.<sup>1</sup>

Remote Engine Start<sup>7</sup>Enhanced LED interior ambient lighting<sup>1</sup>

**AUTOMATED CONVENIENCES**

When you need to create distance between yourself and the outside world, **Active Sound Enhancement** and **Active Noise Cancellation**, aided by the **acoustic front side-window glass**, work together to help reduce extraneous noise and create acoustic bliss.



QX50

Infotainment

ACCESS

# Your Senses, Dialed In



**ACCESS**

Whether you want a podcast to stimulate your creativity or a playlist to bring the vibes, the **Bose 12-speaker Premium Audio system** lets you experience your streaming audio with theater or concert-like immediacy and is designed specifically for the acoustics of your QX50 interior.<sup>1</sup>



Bose 12-speaker Premium Audio system<sup>1</sup>

**ACCESS**

Having two screens means having more access. With the **INFINITI InTouch® dual display layout**, features like available navigation are displayed on the top screen without compromising access to comfort and conveniences below.<sup>8,9</sup>



INFINITI InTouch® dual display layout<sup>8,9</sup>

QX50

Infotainment

CONNECTIVITY

# Rich With Connection



## CONNECTIVITY

Being on the move doesn't have to mean leaving your world behind. With **wireless Apple CarPlay® integration**, you can enjoy the iPhone® experience directly on the touch-screen of the QX50 – and do so without plugging in.<sup>8,10</sup> And when it's time to recharge, simply rest your compatible smartphone on the **wireless charging pad** – no cables or cords required. Because staying connected is in the design.<sup>10</sup>



**CONNECTIVITY**

Just plug in a compatible smartphone, and **Android Auto™** makes accessing your favorite music, media and messaging apps easy.<sup>8,10,11</sup>



Android Auto™ compatibility<sup>8</sup>

QX50

Infotainment

INFINITI INTOUCH®

With You Where  
You Wander



**INFINITI INTOUCH®**

Extend your connection further, including connecting to your QX50 remotely through the available MyINFINITI app with **INFINITI InTouch Services**.<sup>8,10</sup> Whether you're working remotely or streaming with friends, the standard **Wi-Fi Hotspot** supports connection for up to seven devices.<sup>8,10</sup> And with available **INFINITI InTouch with Navigation**, you're free to roam as premium real-time traffic and 3D building graphics show you the lay of the land.<sup>8,9</sup>



# Drive Tech & Performance

Driver Assist Technology



---

Performance



---

Back to Menu



Build & Price →

QX50

Driver Assist Technology

PROPILOT ASSIST & AROUND  
VIEW® MONITOR WITH  
MOVING OBJECT DETECTION

Expanded  
Awareness for an  
Enhanced Drive



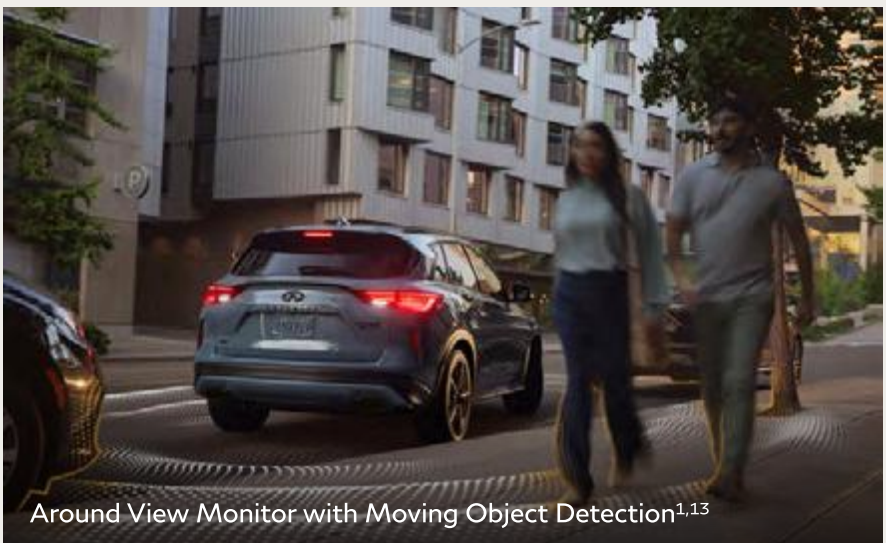
BACK TO SECTION

## PROPILOT ASSIST & AROUND VIEW® MONITOR WITH MOVING OBJECT DETECTION

Transform your commute with standard **ProPILOT Assist**, which can automatically react to the flow of highway traffic by braking and coming to a complete stop and then accelerating up to speed again. Even around gentle curves, QX50 can steer to help keep you centered in your lane.<sup>12</sup> Once you arrive, maneuver tight parking with ease as the available **Around View Monitor with Moving Object Detection** grants a virtual 360° view from above and shows you obstacles it detects in motion.<sup>13,14</sup>



ProPILOT Assist<sup>12</sup>



Around View Monitor with Moving Object Detection<sup>1,13</sup>

QX50

Driver Assist Technology

DRIVER ASSIST FEATURES

# A Proactive Partner



**DRIVER ASSIST FEATURES**

Be spontaneous but not surprised. **Predictive Forward Collision Warning** monitors not only the vehicle directly ahead of you but also the vehicle in front of that one. If QX50 detects a potential collision, it can alert you.<sup>15</sup> In a fast-paced lifestyle, **Forward Emergency Braking with Pedestrian Detection** helps watch for vehicles and pedestrians in your path and, if detected, can apply the brakes.<sup>16</sup>



**ADDITIONAL DRIVER ASSIST FEATURES**

# Venture in Confidence

**BLIND SPOT INTERVENTION®**

Helps alert you of vehicles detected in the blind spot area and actively assists you back toward the center of your lane<sup>17</sup>

**LANE DEPARTURE PREVENTION**

Constantly monitors lane markings, helping guide you back if the system detects you unintentionally begin to drift<sup>18</sup>

**REAR CROSS TRAFFIC ALERT**

Uses sensors when backing up to detect approaching vehicles from either side and alert you<sup>19</sup>

**REAR AUTOMATIC BRAKING**

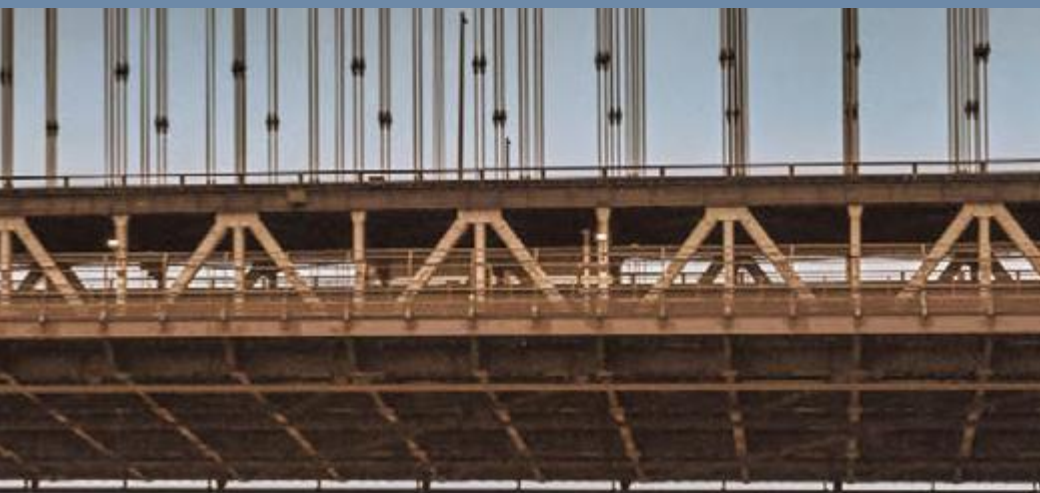
Can help apply the brakes if large stationary objects are detected behind you<sup>20</sup>

**HIGH BEAM ASSIST**

Automatically adjusts the headlights between high and low beams based on the surrounding conditions

QX50

Performance



POWER & EFFICIENCY

The Power  
To Choose



**POWER & EFFICIENCY**

When the road is ready for you, QX50 empowers you with thrilling command. Whether you want to go fast or far, the **VC-Turbo® engine** can change the compression ratio on the fly to optimize either power or efficiency, while the **paddle shifters** grant you a manual drive feel that's literally at your fingertips.<sup>21</sup>



Paddle shifters

QX50

Performance



PERFORMANCE CAPABILITIES

Adapts to  
Your Journey



## PERFORMANCE CAPABILITIES

Change your performance at your whim with the **INFINITI Drive Mode Selector**. Try Sport Mode, which adjusts the engine and transmission to enhance performance. Also selectable are Standard and Eco Modes, as well as Personal Mode, which you can customize as you see fit. As road conditions shift, standard **Intelligent All-Wheel Drive** can automatically transfer up to 50% of the power to the rear wheels for precise traction and control.<sup>22</sup>



INFINITI Drive Mode Selector



INFINITI Intelligent All-Wheel Drive<sup>22</sup>

# Style & Specs

Style



Specs



Trims



Back to Menu



Build & Price →



Hermosa Blue



Graphite Shadow



Slate Gray\*



Black Obsidian



Dynamic Sunstone Red\*



Radiant White\*



Lunar White

INTERIORS 1 OF 2



Graphite Leatherette (PURE)



Graphite Leather Appointments (LUXE)



Pebble Gray Leather Appointments (LUXE)

INTERIORS 2 OF 2



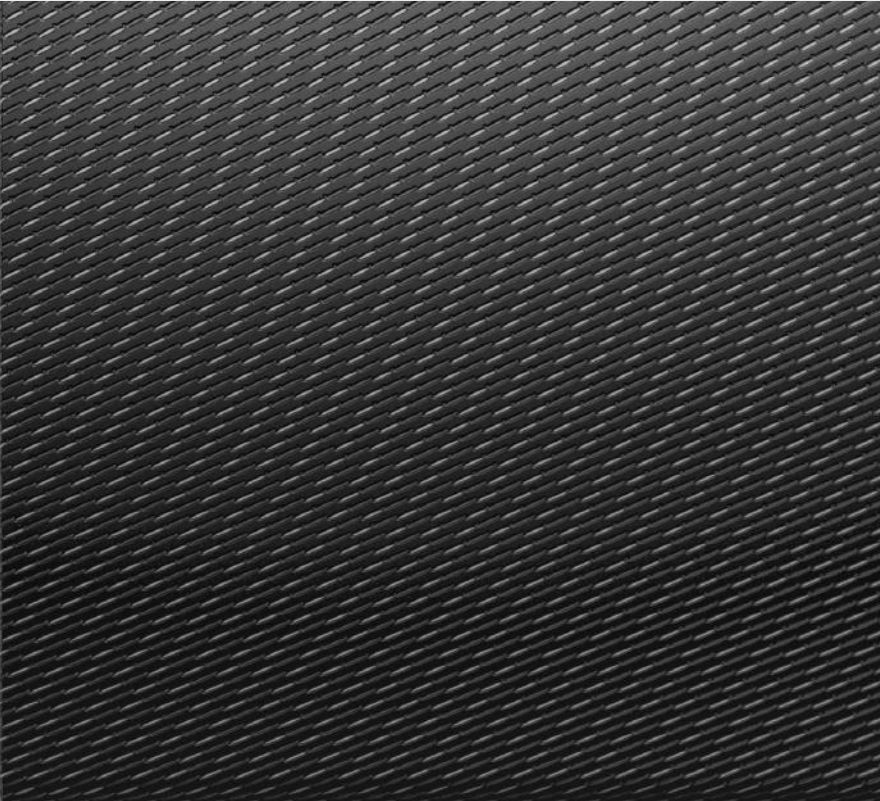
Graphite Semi-Aniline Leather Appointments (SPORT)



Monaco Red Semi-Aniline Leather Appointments (SPORT)



Dark Aluminum (PURE / LUXE)



Black Aluminum (SPORT)



19-inch silver-painted aluminum-alloy wheels (PURE/LUXE)



20-inch dark-painted and machine-finished aluminum-alloy wheels (SPORT)

---

**INTERIOR DIMENSIONS**

---

Head room without panoramic moonroof – first row / second row (inches)

41.0 / 39.1

---

Head room with panoramic moonroof – first row / second row (inches)

40.0 / 38.4

---

Leg room – first row / second row (inches)

39.6 / 38.7

---

**CAPACITIES**

---

Seating

Up to 5 passengers

---

Interior passenger volume – without / with panoramic moonroof (cubic feet)

104.4 / 102.2

---

Cargo volume with second row folded flat – without / with panoramic moonroof (cubic feet)<sup>2</sup>

65.1 / 64.4

---

Fuel tank

16 gallons

**POWER & FUEL ECONOMY**

---

Horsepower

268 hp @ 5,600 rpm

---

Torque

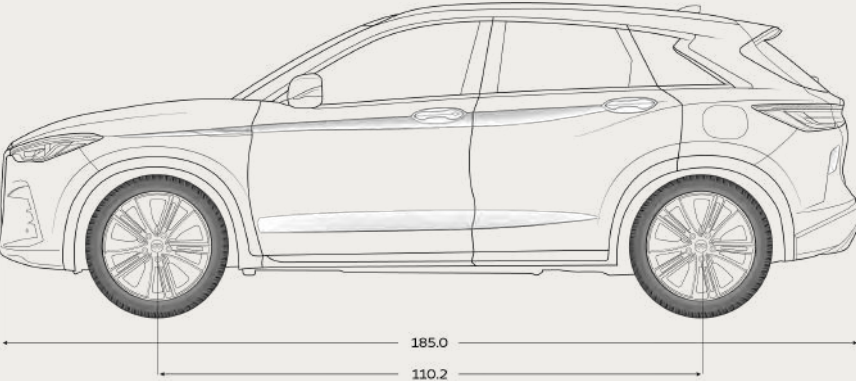
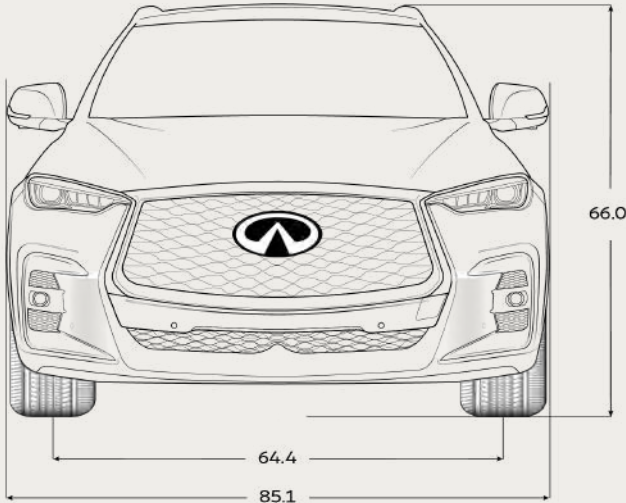
280 lb-ft @ 1,600-4,800 rpm

---

Estimated Fuel Economy<sup>21</sup> – city / highway /  
combined (MPG)

22 / 28 / 25

**EXTERIOR DIMENSIONS**



All dimensions are measured in inches.



**QX50 PURE**

Standard Style and Utility Features



**QX50 LUXE**

Premium Design and Tech Features



**QX50 SPORT**

Daring, Sporty Style



QX50

# PURE



Build & Price →



**PURE 1 OF 5****MECHANICAL & PERFORMANCE**

---

2.0L VC-Turbo® 4-cylinder engine (268 hp, 280 lb-ft of torque)

---

Continuously Variable Transmission with manual shift mode

---

Paddle shifters

---

INFINITI Intelligent All-Wheel Drive<sup>22</sup>

---

Drive Mode Selector

---

13.0-inch front ventilated disc brakes / 12.13-inch rear ventilated disc brakes

---

Independent strut front suspension

---

Independent multi-link rear suspension

---

Electric Power Steering

---

**EXTERIOR**

---

19-inch silver-painted aluminum-alloy wheels with 235/55R19 run-flat, all-season tires

---

LED automatic on/off headlights

---

LED signature Daytime Running Lights

---

Acoustic front-row side-window glass

---

Rear privacy glass

**PURE 2 OF 5**

---

Power heated outside mirrors with integrated turn signals

---

Body-color door handles with chrome accent and welcome light LED

---

**COMFORT & CONVENIENCE**

---

Leatherette seating

---

Leather-wrapped steering wheel

---

Leather-accented shifter

---

Dark Aluminum interior trim accents

---

Aluminum front kick plates

---

8-way power adjustable front seats

---

2-way driver power lumbar

---

60:40-split folding, reclining and sliding rear bench seat<sup>4,5</sup>

---

Dual Zone Automatic Climate Control with rear-seat vents on back of console

---

Intelligent Key with push button ignition

---

Remote Engine Start<sup>7</sup>

---

Frameless auto-dimming rearview mirror

**PURE 3 OF 5****INFOTAINMENT**

---

Power rear liftgate

---

INFINITI InTouch® dual display system, with upper 8-inch and lower 7-inch LCD touch-screen displays<sup>8</sup>

---

INFINITI InTouch® Services with 5-year trial access to Select and 3-year trial access to Premium packages<sup>8</sup>

---

Wi-Fi Hotspot with 3-month or 3GB trial subscription<sup>8,23</sup>

---

Wireless Apple CarPlay® integration<sup>8</sup>

---

Android Auto compatibility<sup>8</sup>

---

Bluetooth® Hands-free Phone System and audio streaming<sup>8</sup>

---

INFINITI Voice Recognition<sup>9</sup>

---

Siri® Eyes Free<sup>8</sup>

---

HD Radio® Technology

---

SiriusXM® with Advanced Audio features and 3-month trial access<sup>8</sup>

---

6-speaker audio system with AM/FM radio and CD player

**PURE 4 OF 5**

---

Active Noise Cancellation

---

Active Sound Enhancement

---

Four USB charging ports (2 Type-C, 2 Type-A)<sup>10</sup>

---

Wireless charging pad<sup>10</sup>

**DRIVER ASSISTANCE**

---

ProPILOT Assist: Steering Assist and Intelligent Cruise Control with full-speed range, stop & hold and auto-resume<sup>12,24,25</sup>

---

Predictive Forward Collision Warning<sup>15</sup>

---

Forward Emergency Braking with Pedestrian Detection<sup>16</sup>

---

Lane Departure Warning<sup>18</sup>

---

Lane Departure Prevention<sup>18</sup>

---

Blind Spot Warning<sup>17</sup>

---

Blind Spot Intervention<sup>®17</sup>

---

Rear Cross Traffic Alert<sup>19</sup>

---

Rear Automatic Braking<sup>20</sup>

---

Rear parking sensors<sup>26</sup>

**PURE 5 OF 5**

---

RearView Monitor<sup>27</sup>

---

Hill start assist

---

Electronic parking brake with automatic brake hold

---

High Beam Assist

---

**SAFETY**

---

INFINITI Advanced Air Bag System includes dual-stage front air bags with seat belt sensors and an occupant-classification sensor<sup>28</sup>

---

Driver and front-passenger supplemental knee air bags<sup>28</sup>

---

Seat-mounted side-impact supplemental air bags for outboard occupants<sup>28</sup>

---

Roof-mounted curtain supplemental air bags for side-impact and rollover head protection for outboard occupants<sup>28</sup>

---

LATCH System (Lower Anchors and Tethers for Children)

---

Zone Body construction with front and rear crumple zones

---

Tire Pressure Monitoring System with Easy-Fill Tire Alert<sup>29,30</sup>

---

QX50

# LUXE



Build & Price →



**LUXE 1 OF 2**

Includes All QX50 PURE Standard Features, Plus:

**EXTERIOR**

---

Panoramic moonroof

---

Outside mirrors with power auto-folding and reverse tilt-down feature

---

Body-color, lower side sill moldings

---

Roof rails<sup>2</sup>

**COMFORT & CONVENIENCE**

---

Leather-appointed seating

---

4-way driver power lumbar

---

Heated front seats

---

2-driver memory system for driver's seat and outside mirrors

---

HomeLink<sup>®</sup> Universal Transceiver

---

Motion-Activated Liftgate

---

Rear door step light

**LUXE 2 OF 2**

**AVAILABLE OPTION 1**

**1 BOSE 12-SPEAKER PREMIUM AUDIO PACKAGE**

---

Bose 12-speaker Premium Audio

---

Bose metallic speaker grilles on tweeters

---

AudioPilot 2.0 Noise Compensation

QX50

# SPORT



Build & Price →



**SPORT 1 OF 3**

Includes All QX50 LUXE Standard Features, Plus:

**EXTERIOR**

---

20-inch dark-painted and machine-finished aluminum-alloy wheels with 255/45R20 run-flat all-season tires

---

LED front fog lights

---

Sport front fascia

---

Black exterior accents – grille surround and inner mesh, front fender accent, roof rails, window trim, liftgate finisher, exhaust tips and badges<sup>2</sup>

---

Body-color exterior door handles

---

Body-color rear diffuser

**SPORT 2 OF 3****COMFORT & CONVENIENCE**

---

Semi-aniline leather-appointed seating

---

Black Aluminum interior trim accents

---

Graphite headliner, sun visors and pillars

---

Enhanced LED interior ambient lighting

---

Climate-controlled front seats

---

Heated steering wheel

**SPORT 3 OF 3****INFOTAINMENT**

---

Navigation with 3D building graphics, 5-year trial access to Premium Traffic and MapCare<sup>8,9</sup>

---

SiriusXM<sup>®</sup> Traffic and Travel Link<sup>®</sup> with 3-month trial access<sup>8</sup>

---

Bose 12-speaker Premium Audio

---

Bose metallic speaker grilles on tweeters

---

AudioPilot 2.0 Noise Compensation

**DRIVER ASSISTANCE**

---

Around View<sup>®</sup> Monitor with Moving Object Detection<sup>13</sup>

---

Front parking sensors<sup>26</sup>

---

Traffic Sign Recognition<sup>31</sup>

# Accessories

Exterior



Interior



Cargo



Lighting & Tech



Pet



Back to Menu



Build & Price →

QX50

Exterior Accessories



EXTERIOR ACCESSORIES

Make a Sleek  
Statement



**EXTERIOR ACCESSORIES**

Sophisticated in simplicity, the **Brushed Stainless Steel Rear Bumper Protector** helps protect your bumper from dings and scratches, while **Black Roof Rail Crossbars** integrate with a variety of Affiliated: Yakima® roof rack accessories to maximize your utility.<sup>2,32</sup>



Brushed Stainless Steel Rear Bumper Protector

Black Roof Rail Crossbars<sup>2</sup>

**EXTERIOR ACCESSORIES**

Add a commanding stance to your QX50's visual presence with the **20" Diamond Cut Bright Metallic Gray Painted Wheel**. Enhance the style of your INFINITI with **Matte Chrome Outside Mirror Covers** for a more distinct finish.



20" Diamond Cut Bright Metallic Gray Painted Wheel



Matte Chrome Outside Mirror Covers

INTERIOR ACCESSORIES

Bring Home  
Memories,  
Not Messes



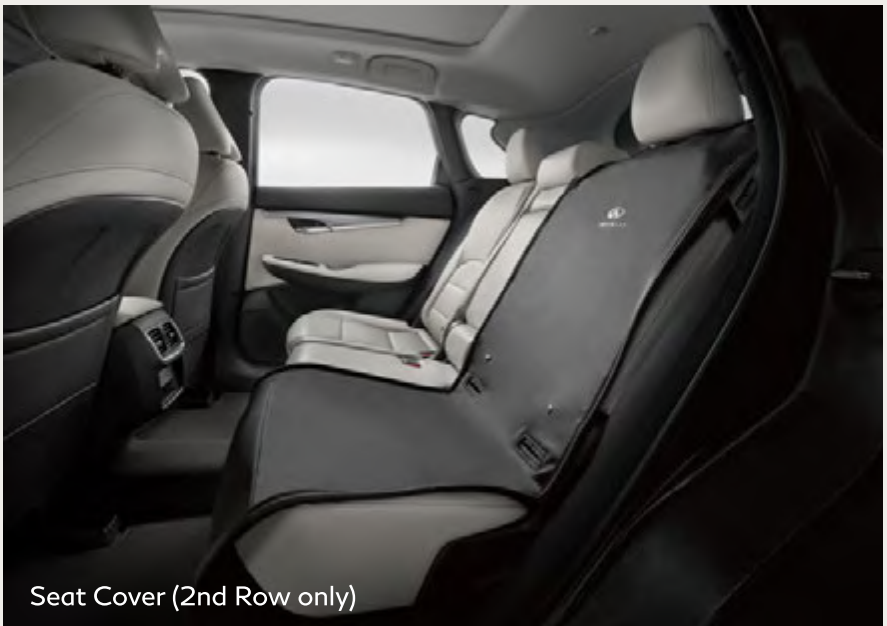
BACK TO SECTION

## INTERIOR ACCESSORIES

Maintain adventure readiness. Keep your everyday and excursion essentials prepped and ready with a **Seatback Organizer** that is designed to attach to the back of the front-passenger's seat. On the way home, help keep your footwells and rear seat tidy with the **All-Season Floor Mats (Black / 4-piece set)**, custom-made of durable and long-wearing material, and the **Seat Cover (2nd Row only)**.



All-Season Floor Mats (4-piece set)



Seat Cover (2nd Row only)

QX50

Cargo Accessories

CARGO ACCESSORIES

# Life Ready



**CARGO ACCESSORIES**

The **Black Reversible Cargo Area Protector** keeps your cargo area clean and helps protect it from scratches and damage, while the **Black Cargo Area Cover** retracts to help keep your valuables safe and out of sight. **Cargo Blocks/Stabilizers** connect to the Cargo Area Protector to hold various sizes of cargo in place.<sup>2</sup>



Black Reversible Cargo Area Protector, Black Cargo Area Cover & Cargo Blocks/Stabilizers<sup>2</sup>

**CARGO ACCESSORIES**

When you venture, keep your food and drinks cool for up to 30 hours in a **Soft Sided Cargo Cooler**, and stay for the night as the **Hatch Tent (10' x 10')** converts your cargo area into a sleeping area.



Soft Sided Cargo Cooler



Hatch Tent (10' x 10')

**CARGO ACCESSORIES**

Customize your cargo space with a **Cargo Organizer** featuring removable dividers. Feeling sporty? The **Lifestyle Receiver** is perfect for lightweight options like bike racks and other sports equipment.<sup>2</sup>

Cargo Organizer<sup>2</sup>Lifestyle Receiver<sup>2</sup>

LIGHTING & TECH ACCESSORIES

# Step In With Confidence



# QX50 Lighting & Tech Accessories

## LIGHTING & TECH ACCESSORIES

With **Virtual Key**, you can lock/unlock doors via a compatible smartphone, start your vehicle and grant access to up to seven others – all without a key.<sup>7,10,33</sup> Illuminate your aesthetic with **INFINITI Radiant® Exterior Welcome Lighting w/ Logo**, as LED lights brighten up the area beneath and around your vehicle. Light up your entry with **INFINITI Radiant® Black Illuminated Kick Plates**, which feature a soft-glowing INFINITI logo along the bottom of the front and rear doorsills.



INFINITI Radiant® Exterior Welcome Lighting w/ Logo



INFINITI Radiant® Black Illuminated Kick Plates

# QX50 Lighting & Tech Accessories

## LIGHTING & TECH ACCESSORIES

Say goodbye to broken and frayed cables with an automotive-grade quality **USB Charging Cable Set**.<sup>10</sup> Pointing forward to capture what is in front of the vehicle and pointing inside to catch what happens in the cabin, the **Dual Camera Drive Recorder** saves footage that can be shared later for added peace of mind.<sup>34</sup>



USB Charging Cable Set<sup>10</sup>



Dual Camera Drive Recorder<sup>34</sup>

QX50

Pet Accessories



PET ACCESSORIES

Travel With Joy



**PET ACCESSORIES**

Bring your furry friends along for the ride. The foldable **Pet Carrier** features three mesh doors (top, side and front) with zipper closures, and the telescoping **Pet Ramp**, made with a strong yet lightweight aluminum construction, extends up to 64 inches. Once you're on the road, the **Dog Harness** – available in four sizes – includes a tether strap that secures the harness to a rear-seat buckle to help limit your dog's movement within the vehicle.



Pet Ramp



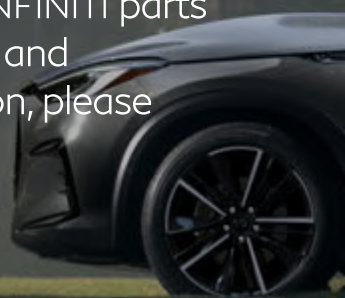
Dog Harness



## INFINITI PREMIUM CARE

# Drive With Confidence

Keeping your INFINITI properly maintained keeps it thoroughly rewarding. That's why the INFINITI Premium Care maintenance program exists to help sustain confidence in your drive. For each new 2023 or newer INFINITI vehicle, INFINITI Premium Care gives you peace of mind in a constantly changing world with 36 months or your vehicle's designated mileage coverage (whichever occurs first) of routine maintenance, including: oil changes, tire rotations, brake fluid replacement, in-cabin microfilter replacement and Tire Road Hazard Protection (not available in Florida).<sup>35</sup> Factory-trained technicians use Genuine INFINITI parts to ensure the utmost care, quality and performance. For more information, please visit your local retailer.<sup>36</sup>





# The Journey Begins

Build an INFINITI that's tailored to your taste and designed around your life.

Build your QX50 →

JOIN OUR COMMUNITY



1 Feature availability varies by vehicle model year, model, trim level, packaging and options.

2 Cargo shown for display purposes only. Cargo and load capacity limited by weight and distribution. Always secure cargo. Heavy loading of the vehicle with cargo, especially on the roof, will affect the handling and stability of the vehicle.

3 65.1 cubic feet without panoramic moonroof and second row in folded position. Maximum cargo volume 64.4 cubic feet with available panoramic moonroof and second row in folded position. Cargo and load capacity limited by weight and distribution. Always secure cargo. Heavy loading of the vehicle with cargo, especially on the roof, will affect the handling and stability of the vehicle.

4 Do not perform slide forward function with the Child Restraint System occupied.

5 Do not ride in a moving vehicle when the seatback is reclined. For the most effective protection, the seat should be upright. See Owner's Manual for safety information.

6 Zero Gravity Seats for outboard passengers only.

7 Remote Engine Start to be used only in accordance with laws or rules in effect in your vehicle's location.

8 Feature availability is dependent on vehicle model, trim level, packaging and options. Trial included with vehicle purchase. **Consumer activation of INFINITI InTouch Services package required.** Compatible connected device and wireless network may be required. Refer to connected device's owner's manual for details. Late availability for some features.

Driving is serious business and requires your full attention. Only use features and connected devices when safe and legal to do so. Some features, including automatic crash notification and SOS, are dependent upon the telematics device being in operative condition, its ability to connect to a wireless network, compatible wireless network availability, navigation map data and GPS satellite signal receptions, the absence of which can limit or prevent the ability to reach Customer Care or receive support. GPS mapping may not be detailed in all areas or reflect current road status. Never program GPS while driving. Only use Remote Engine Start and Remote Horn features in accordance with any laws, rules or ordinances in effect in your vehicle's location. **Cellular network not available in Guam, Puerto Rico, U.S. Virgin Islands, Saipan or American Samoa.**

Some services and features are provided by and dependent on third party service providers and not INFINITI. **Should service providers terminate or restrict service or features, service or features may be suspended or terminated without notice or with no liability to INFINITI or its partners or agents.** Services and features may require compatible cellular network provided by independent companies not within INFINITI or its partners' or agents' control. Cellular network signal strength may vary and may not be available in all areas or at all times. Services and features may not function if cellular network is unavailable, restricted, or terminated. INFINITI and its partners or agents are not responsible for associated costs or other third-party changes that may be required for continued operation due to cellular network unavailability, restriction, or termination (including equipment replacements/upgrades, if available, or roaming charges on alternative networks). Technology is evolving, and changes by independent companies are not within INFINITI's or its partners' or agents' control.

Enrollment, owner consent, personal identification number (PIN), and subscription agreement may be required to receive full suite of features and services. Trial periods (if applicable) begin on the date of vehicle purchase or lease of a new INFINITI. Trial periods and feature availability may be subject to change at any time and may be subject to early termination without notice. Required subscriptions may be sold separately for each available feature or service after trial period ends, and may continue until you call service provider to cancel. Installation costs, one-time activation fee, other fees and taxes may apply. Fees and programming subject to change. Feature may be subject to age restrictions in some areas. Subscriptions governed by service provider's subscription agreement, terms and conditions and privacy statements available at service provider's website. Text rates or data usage may apply. INFINITI InTouch® with Wi-Fi terms and conditions of subscriber agreement apply. Trial is included with vehicle purchase on equipped new INFINITI vehicles. Once your vehicle has exceeded the coverage parameters of the roadside assistance benefits included with your vehicle purchase, you will be responsible for any charges incurred by obtaining roadside assistance for your vehicle. For complete information concerning warranty coverage, conditions and exclusions, please see your INFINITI dealer and read the warranty information booklet.

The INFINITI names, logos and slogans are trademarks owned by or licensed to Nissan Motor Co. Ltd. or its North American subsidiaries. Other trademarks and trade names are those of their respective owners.

For important safety information, system limitations, and additional operating and feature information, see dealer, owner's manual, or [www.infiniti.com/intouch/legal.html](http://www.infiniti.com/intouch/legal.html).

9 Never program while driving. GPS mapping may not be detailed in all areas or reflect current road status.

10 Driving is serious business and requires your full attention. If you have to use the connected device while driving, exercise extreme caution at all times so full attention may be given to vehicle operation. External device not included.

11 Use Hands Free Text Messaging when parked in a safe location. If you must use while driving, monitor traffic conditions and keep both hands on the steering wheel to prevent collisions. Compatible device required. Message and data rates may apply.

12 ProPILOT Assist cannot prevent collisions. It is the driver's responsibility to be in control of the vehicle at all times. Always monitor traffic conditions and keep both hands on the steering wheel. System operates only when lane markings are detected. Does not function in all weather, traffic and road conditions. System has limited control capability and the driver may need to steer, brake or accelerate at any time to maintain safety. See Owner's Manual for safety information.

13 Around View Monitor with Moving Object Detection cannot eliminate blind spots and may not detect every object. Driver should always turn and check surroundings before driving. See Owner's Manual for safety information.

14 Virtual composite 360° view.

15 Predictive Forward Collision Warning cannot prevent collisions. See Owner's Manual for safety information.

16 Forward Emergency Braking with Pedestrian Detection cannot prevent all collisions and may not provide warning or braking in all conditions. Driver should monitor traffic conditions and brake as needed to prevent collisions. See Owner's Manual for safety information.

17 Blind Spot Intervention and Blind Spot Warning cannot prevent all collisions and may not detect every object or warn in all situations. Driver should always turn and look before changing lanes. See Owner's Manual for safety information.

18 Lane Departure Prevention and Lane Departure Warning only operates when lane markings or road edge (if equipped) are detectable. See Owner's Manual for safety information.

19 Rear Cross Traffic Alert may not detect all vehicles. See Owner's Manual for safety information.

20 Rear Automatic Braking cannot prevent all collisions and may not provide warning or braking in all conditions. Driver should always turn and check surroundings before driving and brake as needed to prevent collisions. See Owner's Manual for safety information.

21 2025 QX50 AWD EPA Fuel Economy Estimates 22 City/28 Highway/25 Combined. Actual mileage may vary with driving conditions. Use for comparison only.

22 Intelligent All-Wheel Drive cannot prevent collisions or provide enhanced traction in all conditions. Always monitor traffic and weather conditions.

23 **INFINITI vehicle with AT&T-compatible in-vehicle Wi-Fi hotspot capability:** 3-GB or 90-Day (whichever occurs first) AT&T in-vehicle Wi-Fi trial subscription (**"AT&T in-vehicle Wi-Fi Hotspot Trial"**) is included with the purchase or lease of a new INFINITI vehicle if: (i) vehicle is equipped with compatible SIM, and (ii) customer activates AT&T in-vehicle Wi-Fi Trial ("Trial Activation"). Data charges may apply. Trial period begins at time of customer's Trial Activation. Trial ends when all data is used or period ends, whichever comes first. Trial does not renew. To continue service following expiration is required. **This feature is not intended for use by the driver while the vehicle is in motion. Always drive safely. AT&T in-vehicle Wi-Fi Trial is owned and operated by AT&T, use of AT&T account and its services and features are subject to the AT&T Consumer Service Agreement and Privacy Policy, and are not within Nissan's control. Other restrictions apply. Visit [www.att.com/csa](http://www.att.com/csa) for complete terms and conditions.** Should AT&T terminate, change, or restrict service or features, service or features may be suspended or terminated without notice or with no liability to INFINITI or its partners or agents. INFINITI and its partners or agents are also not responsible for associated costs or other third party changes that may be required for continued operation due to cellular network unavailability, restriction, or termination (including equipment replacements/upgrades, if available, or roaming charges on alternative networks). Trial subscription is subject to change or early termination at any time without notice. AT&T, AT&T logo and all other marks contained herein are trademarks of AT&T Intellectual Property and/or AT&T affiliated companies. The INFINITI names, logos and slogans are trademarks owned by or licensed to INFINITI Motor Co. Ltd. and/or its North American subsidiaries. Other trademarks and trade names are those of their respective owners.

24 See Owner's Manual for safety information and system limitations.

25 Intelligent Cruise Control uses limited braking and is not a collision avoidance or warning system. Driver should monitor traffic conditions and brake as needed to prevent collisions. See Owner's Manual for safety information.

26 Sonar System may not detect every object. Driver should always check surroundings before driving. See Owner's Manual for safety information.

27 RearView Monitor may not detect every object and does not eliminate blind spots or warn of moving objects. See Owner's Manual for safety information.

28 Air bags are only a supplemental restraint system. Always wear your seat belt. Rear-facing child restraints should not be placed in the front-passenger's seat. All children 12 and under should ride in the rear seat properly secured in child restraints, booster seats or seat belts according to their size. Air bags will only inflate in certain accidents. See Owner's Manual for safety information.

29 Tire Pressure Monitoring System is not a substitute for regular tire pressure checks. See Owner's Manual for safety information.

30 Vehicle must be on for the Easy-Fill Tire Alert to operate.

31 Traffic Sign Recognition may not detect and read all traffic signs in all conditions. Driver should monitor all traffic signs and obey all traffic laws. See Owner's Manual for details.

32 Accessories shown on vehicle are not genuine INFINITI parts/accessories. Not warranted by INFINITI. Refer to product manufacturer for warranty details. INFINITI limited warranty does not cover damages or failures to the vehicle caused by improper installation or alterations of any accessory or component. Contact your retailer for details.

33 Compatible smartphone and vehicle remote engine start system required. Virtual Key to be used only in accordance with laws or rules in effect in your vehicle's location. Actual maximum distance for operation will vary depending on obstructions between compatible device and vehicle.

34 Dual Camera Drive Recorder to be used only in accordance with any laws or rules in effect in your vehicle's location that may apply to audio or video recordings of drivers and passengers.

35 Tire Road Hazard Protection is not available in Florida.

36 INFINITI Premium Care is included with each new <2023 or newer> INFINITI vehicle purchase or lease from retailer stock. Coverage period for new INFINITI models is the earlier to occur event of 36-months or model's designated mileage period, which varies based on model year and model. INFINITI Premium Care is provided through Elite Protection Program. **For complete information concerning components covered, and those components which are excluded from coverage, read a sample Elite Protection Program contract at your retailer, and read your actual service contract because its terms, conditions, exclusions, and limitations control.** In Florida, INFINITI Elite Extended Protection Program is backed by IESNA, Inc., P.O. Box 685004, Franklin, TN, 37068-5004. License #60128. ELITE® and Elite Protection Program are trademarks of Nissan North America, Inc.

Android, Android Auto, Google Maps, YouTube Music and other marks are trademarks of Google LLC. Compatible Android phone and compatible active data plan required. To wirelessly use Android Auto on your car display, you need a compatible Android smartphone with an active data plan. You can check which smartphones are compatible at [g.co/androidauto/requirements](http://g.co/androidauto/requirements).

Apple CarPlay®, CarPlay® and Siri® are registered trademark of Apple Inc. iPhone® is a registered trademark of Apple Inc. All rights reserved. iPhone® or other external device not included. Pairing speed may vary when establishing CarPlay connection wirelessly. Wireless smartphone integration only supported with CarPlay.

AudioPilot® and Bose® are registered trademarks of the Bose Corporation.

Bluetooth® word mark and logos are owned by Bluetooth SIG, Inc., and any use of such marks by INFINITI is under license.

Facebook® is a registered trademark of Meta Platforms, Inc.

HD Radio® is a registered trademark of iBiquity Digital Corporation.

HomeLink® is a registered trademark of Gentex Corporation.

Instagram® is a registered trademark of Instagram, LLC.

SiriusXM is a registered trademark of Sirius XM Radio Inc.

X is a trademark of X Corp.

Yakima® is a registered trademark of Yakima Products, Inc.

This brochure is intended for general descriptive and informational purposes only. It is subject to change and does not constitute an offer, representation or warranty (express or implied) by Nissan North America, Inc. Interested parties should confirm the accuracy of any information in this brochure as it relates to a vehicle directly with Nissan North America, Inc. before relying on it to make a purchase decision. Nissan North America, Inc. reserves the right to make changes, at any time, without prior notice, in prices, colors, materials, equipment, specifications and models and to discontinue models or equipment. Due to continuous product development and other pre- and post-production factors, actual vehicle, materials and specifications may vary from this brochure. Some vehicles shown with optional equipment. See the actual vehicle for complete accuracy. Availability and delivery times for particular models or equipment may vary. Specifications, options and accessories may differ in Hawaii, U.S. territories and other countries. For additional information on availability, options or accessories, contact your INFINITI retailer or Nissan North America, Inc.

 **BACK TO MENU**