



Your Event, Your Canvas
FACILITY RENTAL PROGRAM



ABOVE & OPPOSITE: AMFA's south entrance sits among an 11-acre landscape plan complete with sculptures and walking paths. NOTE: Building images are architectural renderings used to convey the overall sense of each space. Design details may have changed since these renderings were created.



Events at the Museum

Create a perfect event at the most distinguished space in Little Rock – the Arkansas Museum of Fine Arts (AMFA). Located in historic MacArthur Park and situated on 11 acres of landscaped green space, the 133,000-square-foot building provides the ideal backdrop for your next private event, celebration, professional meeting, or social gathering.

From outdoor sculptures to the main galleries, AMFA offers your guests a memorable setting among a world-renowned art collection.

With exceptional food and beverage offerings and attentive service, AMFA affords endless opportunities for elegant, tailor-made events. The state-of-the-art building allows for spaces to be transformed to realize your vision.

Create your vision.
Contact us today.

Leslie Garner, Special Events Manager

Email:
specialevents@arkmfa.org

Phone number:
501.396.0394



ABOVE & OPPOSITE: Designed as a place for entertaining and gathering, the Cultural Living Room is the perfect setting for any event. This sophisticated space is surrounded by glass, giving guests grand views in every direction.



Cultural Living Room

The Cultural Living Room is one of the signature spaces of the new AMFA. This second-floor space has soaring floor-to-ceiling glass walls that overlook the Courtyard Entrance, the Museum's original 1937 façade, and the newly landscaped Crescent Lawn.

The Cultural Living Room is a flexible space suitable for a variety of gatherings including formal seated dinners and receptions with room for a band and dance floor. With direct access to the AMFA catering kitchen, guests will experience the best of service without any interruption to your event.

As an added benefit, the Cultural Living Room is adjacent to the Harriet and Warren Stephens Galleries, which may be reserved for your event.

Capacity

Standing: up to 500

Seated: up to 350

Square footage: 5,860

Possibilities

Dinners

Luncheons

Parties

Receptions

Weddings



Atrium

The light-filled Atrium is the center of the new AMFA. This two-story space connects guests to the Governor Winthrop Rockefeller Lecture Hall, Performing Arts Theater, Museum Store, Harriet and Warren Stephens Galleries, and other key areas of the Museum. Additionally, the Atrium is close to parking with easy access for guests.

The Atrium is suitable for receptions, cocktail parties, and seated dinners. This space is also perfect for combining with other Museum spaces for a larger multi-event function.

Capacity

Standing: up to 500
Seated: up to 300
Square footage: 5,274

Possibilities

Dinners
Luncheons
Parties
Receptions
Weddings



ABOVE: The Atrium gives guests direct access to the south entrance and Museum Store. OPPOSITE: When guests enter the south entrance, they arrive in the Atrium. This impressive space reflects the distinctive architecture throughout the Museum.



ABOVE: Thomas Hart Benton, American (1889 - 1975), *Clay County Farm*, 1971, oil on canvas, Arkansas Museum of Fine Arts Foundation Collection: Bequest from the estates of Louise and Fred Dierks. OPPOSITE: Located on the south lawn, this space offers options for open-air entertaining among the Museum's landscaping.



Event Lawn

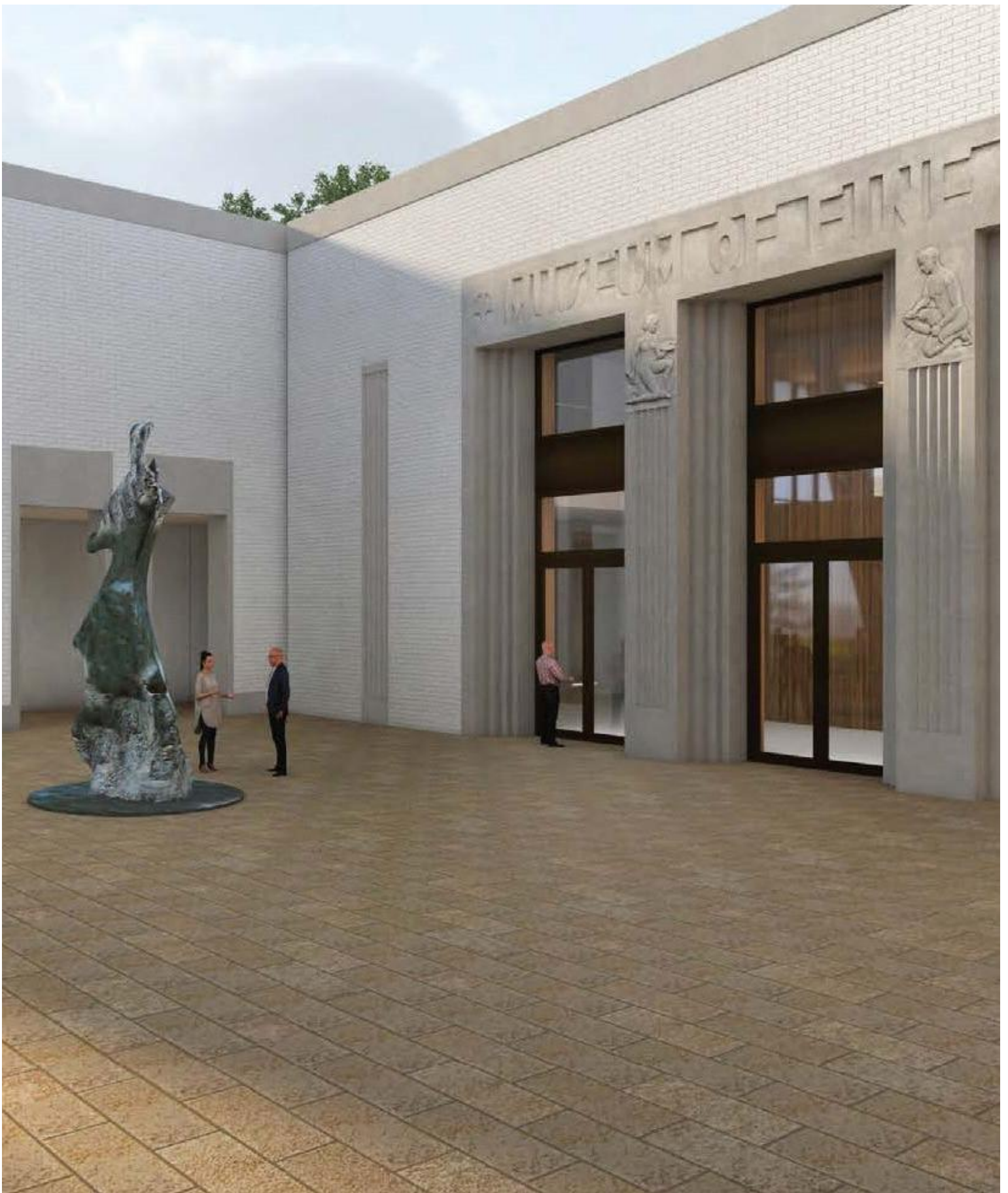
With historic MacArthur Park as its backdrop, the Event Lawn is open and inviting. This outdoor space is framed by gently curved walking paths, beautifully landscaped native plants and trees, and sculptures. The Event Lawn is designed for events and can accommodate a large tent with ample power supply to support a variety of outdoor entertainment needs.

Capacity

Standing: up to 550
Seated: up to 350
Square footage: 5,098

Possibilities

Dinners
Luncheons
Parties
Receptions
Weddings



ABOVE: The north entrance exemplifies AMFA's history and serves as a notable point of interest and outdoor gathering space. OPPOSITE: Entering through the original 1937 façade, guests are welcomed into the lobby.



Courtyard Entrance with 1937 Lobby

The Museum's north entrance features an open-air Courtyard with a prominent view of AMFA's original 1937 façade. The Courtyard is paired with the 1937 Lobby, which provides an additional space for indoor gathering.

Guests can access the Museum's ample free parking from Crescent Drive, which also creates the perfect place for valet service.

The Courtyard Entrance with the 1937 Lobby is grand yet welcoming, providing an unforgettable setting for your event.

Capacity

Courtyard only
Standing: up to 450
Seated: up to 300
Square footage: 4,589

Possibilities

Dinners
Luncheons
Parties
Receptions
Weddings



Glass Box with Terrace

This light-filled, multipurpose space features 18 feet high glass walls with both interior Museum and exterior park entrances.

The Glass Box boasts a mirrored wall, exceptional audio and visual capabilities, and a ceiling truss system for custom lighting design. The private terrace connects the interior space to the outdoor landscaped grounds, providing additional room for guests. The high ceilings enhance the modern elegance of this stunning space, allowing for unlimited event design and creation.

Capacity

Standing: up to 220

Seated: up to 150

Square footage: 2,642

Possibilities

Dinners

Luncheons

Meetings

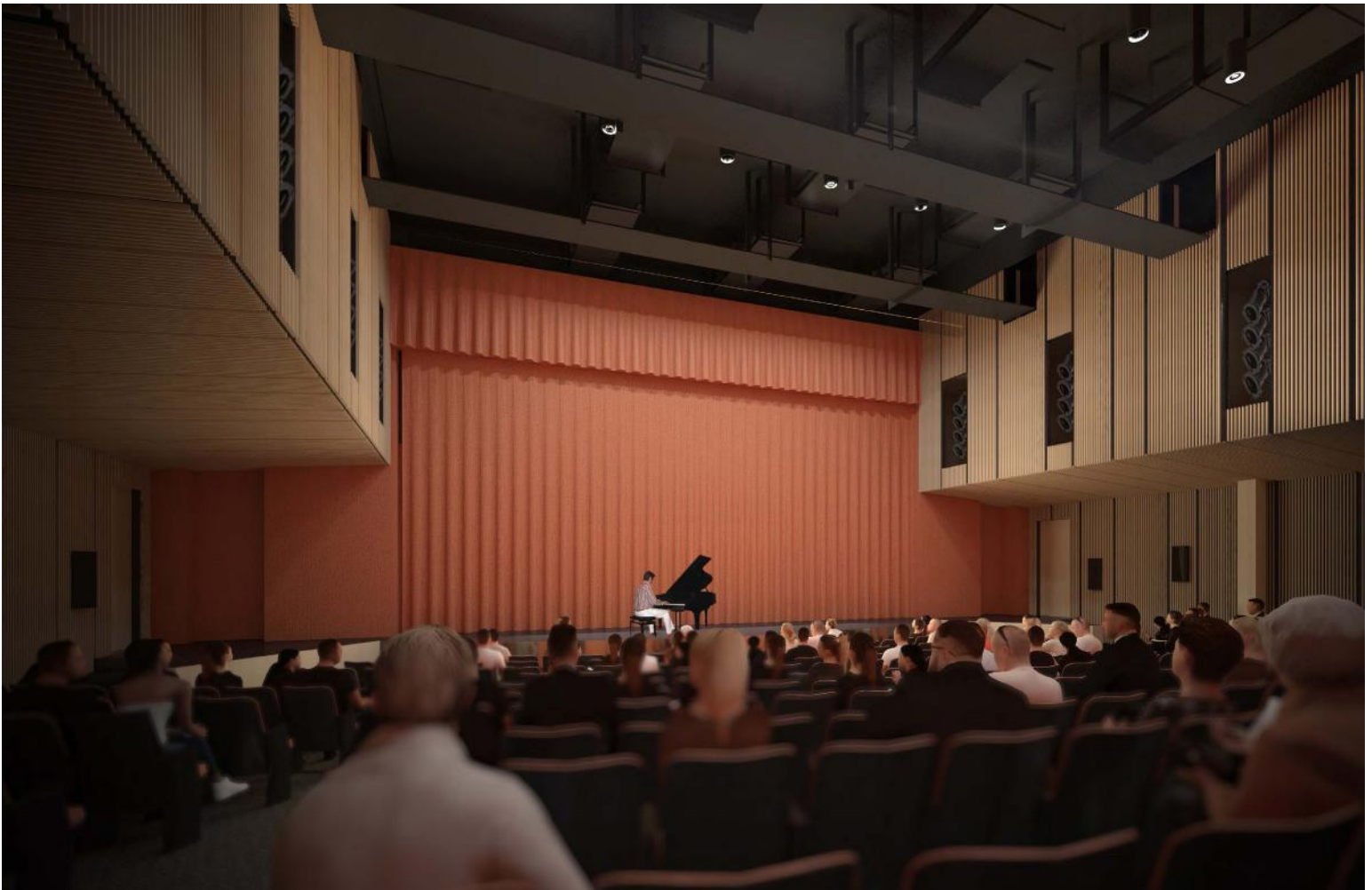
Parties

Receptions

Weddings



ABOVE: The Glass Box offers both a sleek, modern interior space with striking views of MacArthur Park from the adjoining terrace. OPPOSITE: Beth Lipman, American (1971 -), *Laid Table with Bird, Goblet, and Fruit*, 2006, blown glass and mixed media, Arkansas Museum of Fine Arts Foundation Collection: Purchase, Tabriz Fund, Memorial and Honorary Gift Fund.



Performing Arts Theater

The reimaged 350-seat Performing Arts Theater is fully equipped with state-of-the-art digital audio and visual projection. This ADA accessible space can host corporate or private events. With the latest technology and networking capabilities, the Performing Arts Theater is a distinguished venue for high-profile presentations or lectures.

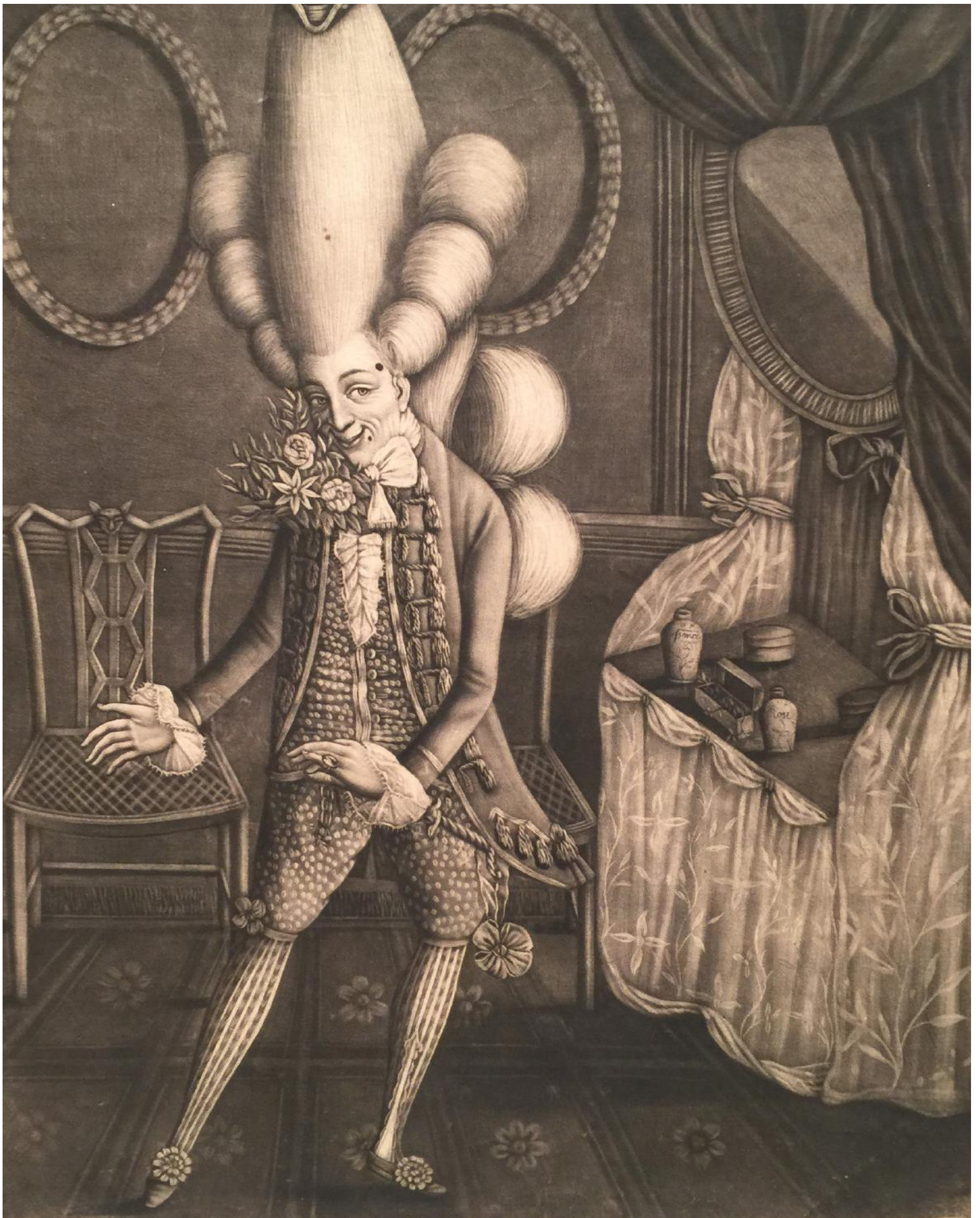
The Performing Arts Theater can host a variety of customized events and offers the unique option to have a seated dinner or reception on stage, creating a memorable moment for your guests.

Capacity

Seated: 350
Stage seating: 250
Square footage: 6,671

Possibilities

Lectures
Meetings
Performances
Presentations
Dinners (stage only)
Receptions (stage only)



ABOVE: Philip Dawe, British (1735 - 1832), *The Macaroni: A Real Character at the Late Masquerade* (detail), 1773, mezzotint on paper, Arkansas Museum of Fine Arts Foundation Collection: Gift of Ingrid Rose in memory of Milton M. Rose. OPPOSITE: Complete with the latest technology, the Performing Arts Theater is an ideal venue for a variety of events.



Governor Winthrop Rockefeller Lecture Hall

The Governor Winthrop Rockefeller Lecture Hall creates an optimal arrangement for professional presentations, lectures, and guest speakers. This fully carpeted space features excellent acoustics and audio and visual capabilities, making it a great space for meetings and presentations.

Capacity

Seated: up to 153

Square footage: 1,456

Possibilities

Lectures

Meetings

Presentations



Terri and Chuck Erwin Collections Research Center

This well-appointed room features custom walnut paneling, built-in audio and visual capabilities, meeting tables, and chairs. This space also includes access to an attached kitchenette and private restroom.

The Terri and Chuck Erwin Collections Research Center is an ideal location for private meetings, corporate retreats, luncheons, and formal presentations.

Capacity

Standing: up to 50

Seated: 36

Square footage: 1,670

Possibilities

Lectures

Luncheons

Meetings

Presentations

General FAQs

What are the rates for rental spaces?

Please contact the AMFA Special Events Manager to discuss rates and availability.

What is included in the rental cost?

The rental fee includes oversight by the AMFA Special Events Manager, janitorial services, a one-time setup and breakdown of AMFA-owned equipment, use of event tables and chairs*, and use of audio and visual equipment in select rooms. These items and services are included with the 6-hour rental period.

**Based on availability*

May I rent all Museum spaces on the same day?

Yes. Please contact the AMFA Special Events Manager to learn more.

Are certain events not allowed?

Museum spaces may not be used for fundraisers, proms, or ticketed events.

Is AMFA ADA accessible?

Yes. AMFA has accessible entrances, elevators, and restrooms.

Do you have preferred vendors?

We have a list of preferred vendors to assist you in creating your event. We require clients utilize AMFA Catering.

What are the parking options for my guests?

Free, accessible, and safe parking for guests is available primarily along the west and south areas of the AMFA campus. Valet parking may be conveniently accommodated at the Museum's main entrances. We will provide a preferred valet company to contact for your event.

Do I need a professional wedding or event planner?

Professional wedding or event planners are recommended but will only be required when an event exceeds a certain size or requires a certain level of coordination.

What are the options for catering?

AMFA Catering is our exclusive in-house, full-service caterer and alcohol provider.

Will you have staff on-site during my event?

The AMFA Special Events Manager and AMFA Catering Staff will be on-site from start to finish on your event day. AMFA also provides security and janitorial services during your event.

Do you have coat check available?

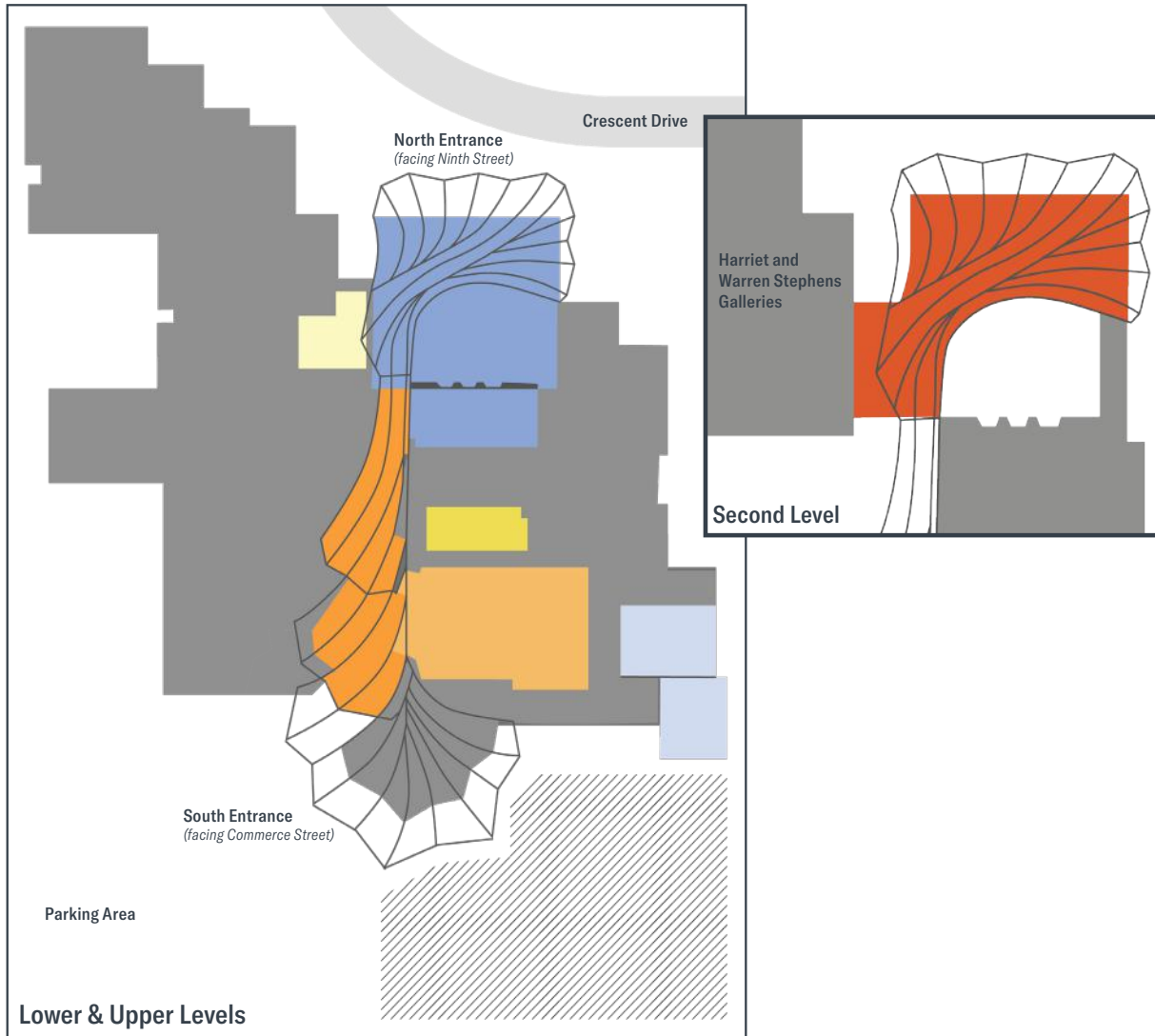
Yes. Coat check is available for an additional hourly fee based on the number of guests.

How do I learn more?

Please contact the AMFA Special Events Manager to schedule an appointment.

Map of Facility Rental Spaces

AMFA offers eight spaces throughout the Museum campus for event rentals, including indoor and outdoor locations. The Atrium spans the length of the building and guides guests through the Museum.



Rentable Spaces

- | | |
|--|---|
| Cultural Living Room | Terri and Chuck Erwin Collections Research Center |
| Atrium | Courtyard Entrance with 1937 Lobby |
| Performing Arts Theater | Glass Box with Terrace |
| Governor Winthrop Rockefeller Lecture Hall | Event Lawn |

Create your vision.
Contact us today.



The Arkansas Museum of Fine Arts Facility Rental program supports AMFA exhibitions and programming, including free admission for all. Thank you for supporting this mission.

ABOVE: Tarrence Corbin, American (1944 - 2009), *Untitled from Crate Series* (detail), circa 1985, acrylic and collage on paper, Arkansas Museum of Fine Arts Foundation Collection: Gift of Blanche and Beadle Moore.

arkmfa.org

Leslie Garner, Special Events Manager

Email:
specialevents@arkmfa.org

Phone number:
501.396.0394

Address:
Arkansas Museum of Fine Arts
501 East Ninth Street
Little Rock, Arkansas 72202