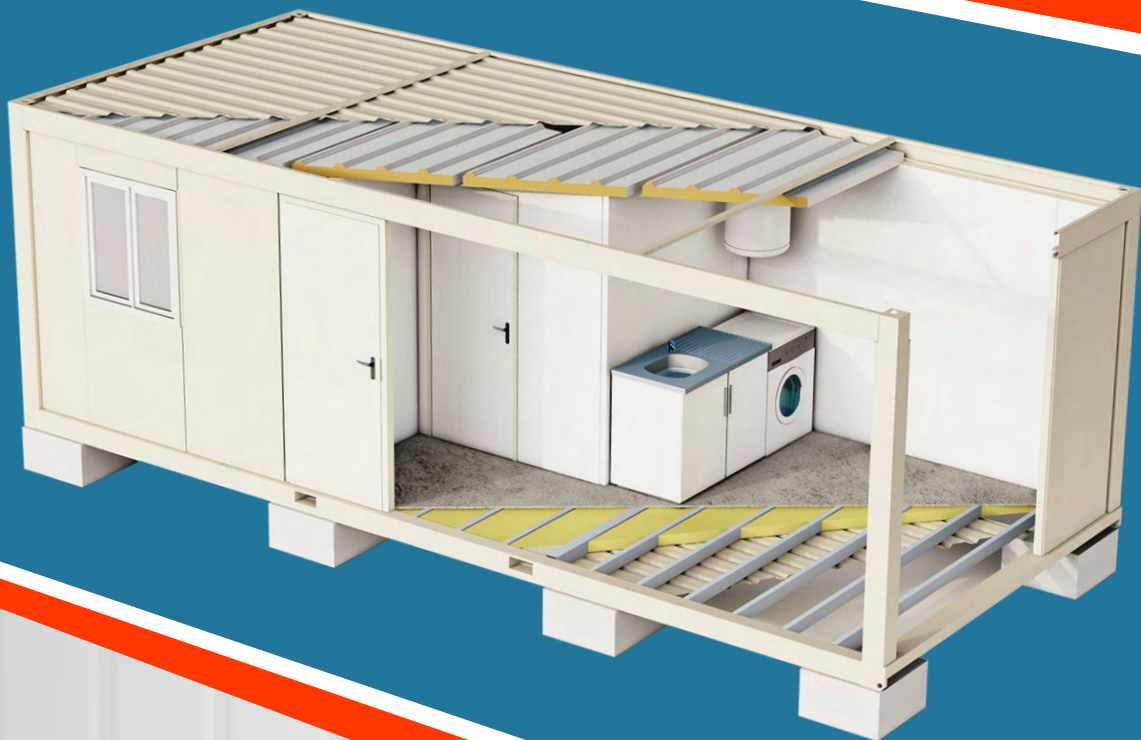


READY HOME



TASSA





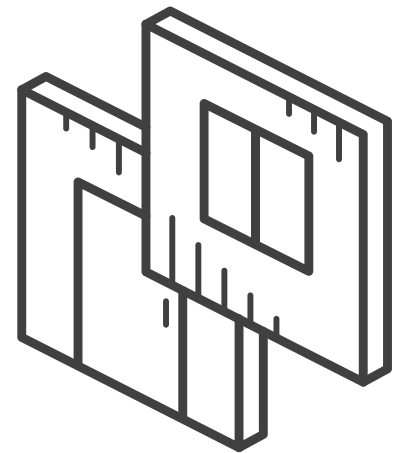
- **Building Works** / Page 3
- **Mechanical Plan** / Page 4
- **Supporting Structure** / Page 5
- **Furniture & Equipments** / Page 5
- **External & Internal Wall** / Page 6
- **Container Roof & Ceiling** / Page 7
- **Container Floor** / Page 7
- **Windows & Doors** / Page 8, 9
- **Sanitary Installation** / Page 10, 11
- **Electrical Installation** / Page 12, 13
- **Architectural Plan** / Page 14, 15
- **3D Plans** / Page 16
- **Transportation & Logistics** / Page 17
- **Warranty** / Page 17
- **Quality & Safety** / Page 17
- **Photo Gallery** / Page 18, 23
- **2 Floor Solution** / Page 24, 25





Building Works

- Design and Engineering activities necessary for manufacturing
- Building structures, roof and wall cladding and finishes
- PVC floor covering
- PVC windows
- Doors
- Electrical installation – surface mounted (cables, sockets/switches, distribution boxes)
- Illumination fixtures – surface mounted
- Sanitarywares, fixtures and plumbing installations – surface mounted





Mechanical Plan

- Living room (9,9 m²)
- Bedroom (6,5 m²)
- WC-Shower (2,6 m²)
- Kitchen counter with lower cabinets
- Shower tray, shower curtain, toilet, sink, bathroom-toilet accessories
- Lighting, TV, switch and socket (total 7 sockets) installations, fuse box and circuit breakers
- Plumbing and mechanical installation for water heater and washing machine

Supporting Structure

Columns and Frame Profiles

Floor and ceiling frame profiles, secondary profiles and corner columns will be produced from black steel sheet and painted in RAL 9002 color on the priming coat. All units will be assembled at Factory and delivered to site as a finished 3D volumetric unit.

Fasteners & Closures

Galvanized bolts, nuts and screws are used for all connections. All closures to be used both inside and outside of the buildings shall be in harmony with the structure and prevent leakage. Closures will be painted in accordance with the wall claddings.

Furniture & Equipment

Kitchen

Kitchen counter with cupboards, sink and faucet





External & Internal Wall

External Wall

External Cladding:

50 mm PIR (40 kg/m³) insulated sandwich panel; both sides are cladded with 0,35 mm thick galvanized steel sheet with RAL 9002 colored coil coating

External Wall Thickness:

50 mm

Internal Wall

Internal Cladding:

50 mm PIR (40 kg/m³) insulated sandwich panel; both sides are cladded with 0,35 mm thick galvanized steel sheet with RAL 9002 colored coil coating

External Wall Thickness:

50 mm

Container Roof & Ceiling

Roof Covering Material:

0.50 mm thick with 27 mm roll depth, RAL 9002 colored polyester electrostatic powder coated or coil coated galvanized trapezoidal sectioned steel sheets.

Insulation and Ceiling Covering Material:

PIR insulated 5 ribs roof sandwich panel (with the following features)

- 0.5 mm thick RAL 9002 painted rib galvanized steel sheet
- 70 mm (+35 mm rib) PIR (40kg/m³) insulation
- 0.4 mm thick RAL 9002 painted galvanized steel sheet

Rain Gutters

Rainwater is collected by 2 mm thick galvanized steel sheet gutters placed at the short sides and thrown out at the 4 corners of the container.

Container Floor

Floor Covering:

2.0 mm thick PVC based, wooden patterned brown color, welded type floor covering (adhesive, welding wire, PVC skirting included)

Surface Covering:

18 mm thick unpainted cement board

Insulation Material:

80 mm thick mineral wool insulation

Chassis Steel Frame:

Special bended steel sheet profiles (RAL 9002 painted on the priming coat)

External Bottom Cover:

0.35 mm thick, unpainted galvanized steel sheet

Loading Capacity:

200 kg/m²



Windows & Doors

Windows

Window Frame:

Hard plastic, steel reinforced white PVC profile

Window Wing:

PVC windows 4+12+4 mm double glazing (frosted glass at band windows) with PVC handle

Fly Screen For Windows:

Plastic framed, plastic wired, fly screens will be provided

Window Mechanism:

Large windows will be tilt & turn opening and band windows will be tilt opening type

External Doors

Door Frame:

RAL 9002 colored polyester electrostatic powder coated galvanized steel sheets. Doors shall be equipped with weather stripping to maintain leak proofing

Door Wing:

RAL 9002 colored polyester electrostatic powder coated galvanized steel sheets, 50 mm thick rockwool or EPS insulation material in between

Door Handle and Lock:

Metal door handle and cylindrical lock

Internal Doors

Door Frame:

RAL 9002 colored polyester electrostatic powder coated galvanized steel sheets.

Room Door Wing:

RAL 9002 painted panel covered wooden door

Bathroom Door Wing:

PVC or RAL 9002 painted panel covered wooden door

Door Handle and Lock:

Metal door handle and cylindrical lock at room doors and toilet lock at toilet doors



Sanitary Installation

Installation will be surface mounted

Pipes:

- Clean Water Pipes: PPRC
- Waste Water Pipes: PVC

Wash Basin & Accessories:

- Wash Basin Type: 40 x 50 cm pedestal type, ceramic
- Mirror & Shelve, Liquid Soap Dispenser, Paper Towel Holder will be provided

Toilet & Accessories:

- Toilet Type: Western type, Self-reservoir, ceramic closet with hole for nozzle
- Toilet Paper holder: will be provided
- Toilet and Shower Accessories: Chromated

Shower Tray & Accessories:

- Shower Tray Type: 80x80cmdim, acrylic
- Shower Curtain: PVC Curtain with Plastic Pipe
- Towel Hook, Soap Holder: will be provided.

Taps:

- Mix controlled

Angle valve for washing machine:

- Included

Water Heaters:

- Electrical

Floor Drain:

- PVC

Hot Water Installation:

- Wash basins and showers





Electrical Installation

Lighting, TV, switch and socket
(total 7 sockets) installations, fuse box and circuit breakers

Electrical installation will be provided according to
220/380 Volt, 50 Hz, complying with TSE, VDE or IEC standards.

*Installation will be surface mounted by cable trunking at panel
surface and ceiling*

Cabling:

- Power & Lighting Cables: NHXMH
- TV Cables: RG6U6
(btw. TV socket and the junction box on the surface of the container wall)

Lighting (Illumination Density):

- At accommodation rooms: 150 lux
- At WC, shower areas: 100 lux

Armatures:

- Rooms and Corridors: 9 watt LED
- External Doors: Weatherproof glob armature
- Wet areas (WC- Shower): 9 watt LED

Switches & Sockets:

Switches shall be mounted 1.20 m, sockets shall be mounted 0.50 m above the unfinished floor level

- Power Sockets: 16 Amp, 230 Volt, 3 wire, grounded European Schuko Style CEE 7/7
- Switches: 10 Amp, 230 Volt

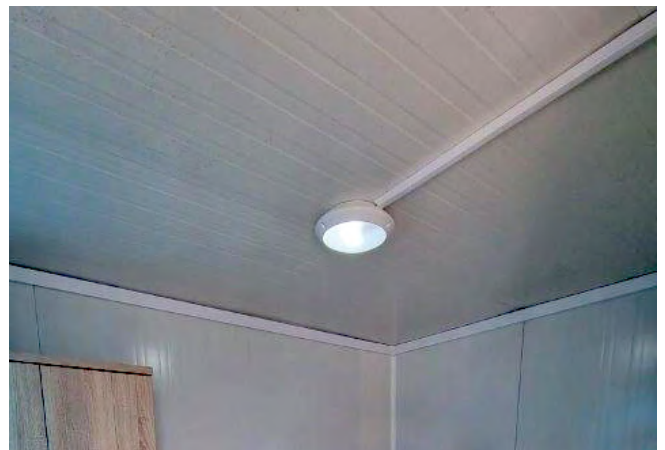
Circuit Breakers:

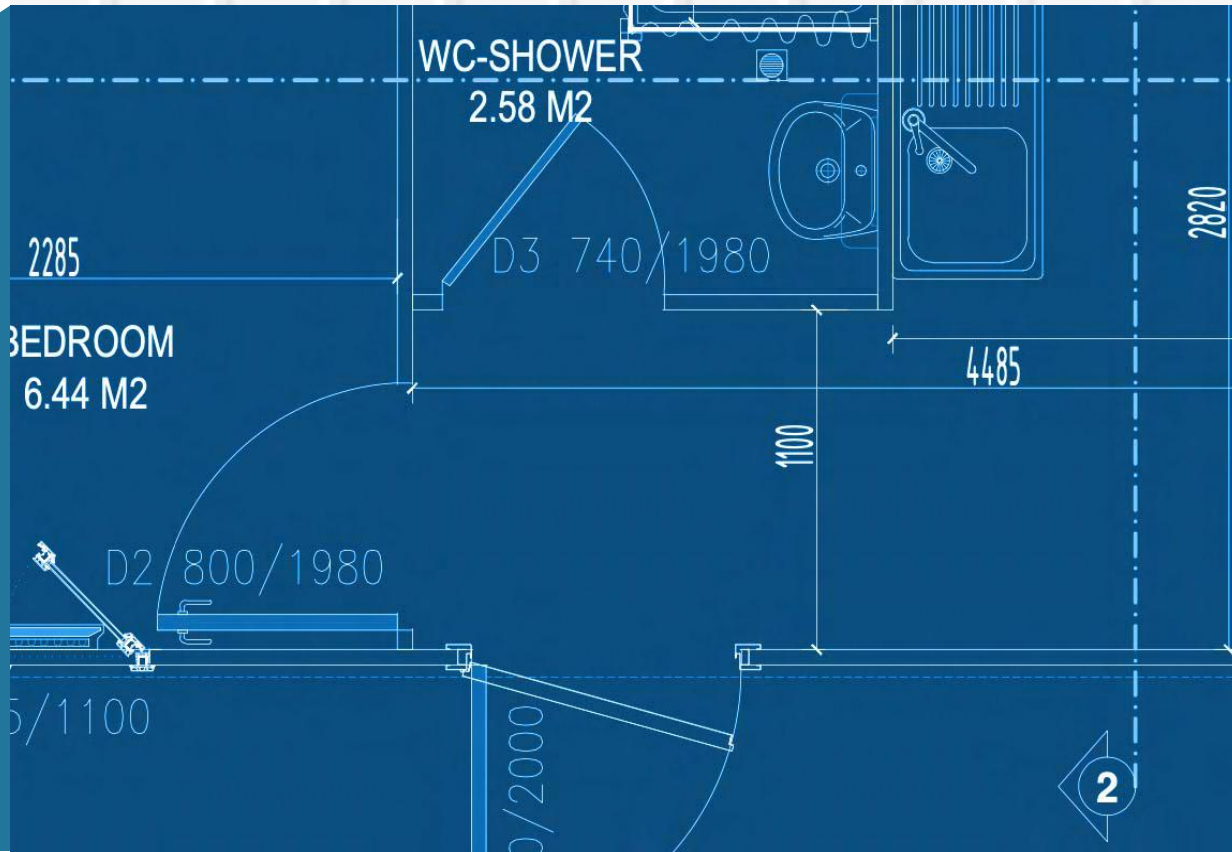
- Lighting: 1x10A B type miniature circuit breaker
- Sockets: 1x16A C type miniature circuit breaker

Water Heater: Capacity will be calculated according to the water heater unit and circuit breaker shall be located inside the main distribution panel

Distribution Panel:

Each building will contain n.1 IP 40 distribution panel. Ground fault current interrupter shall be located before the system CB on distribution panel board





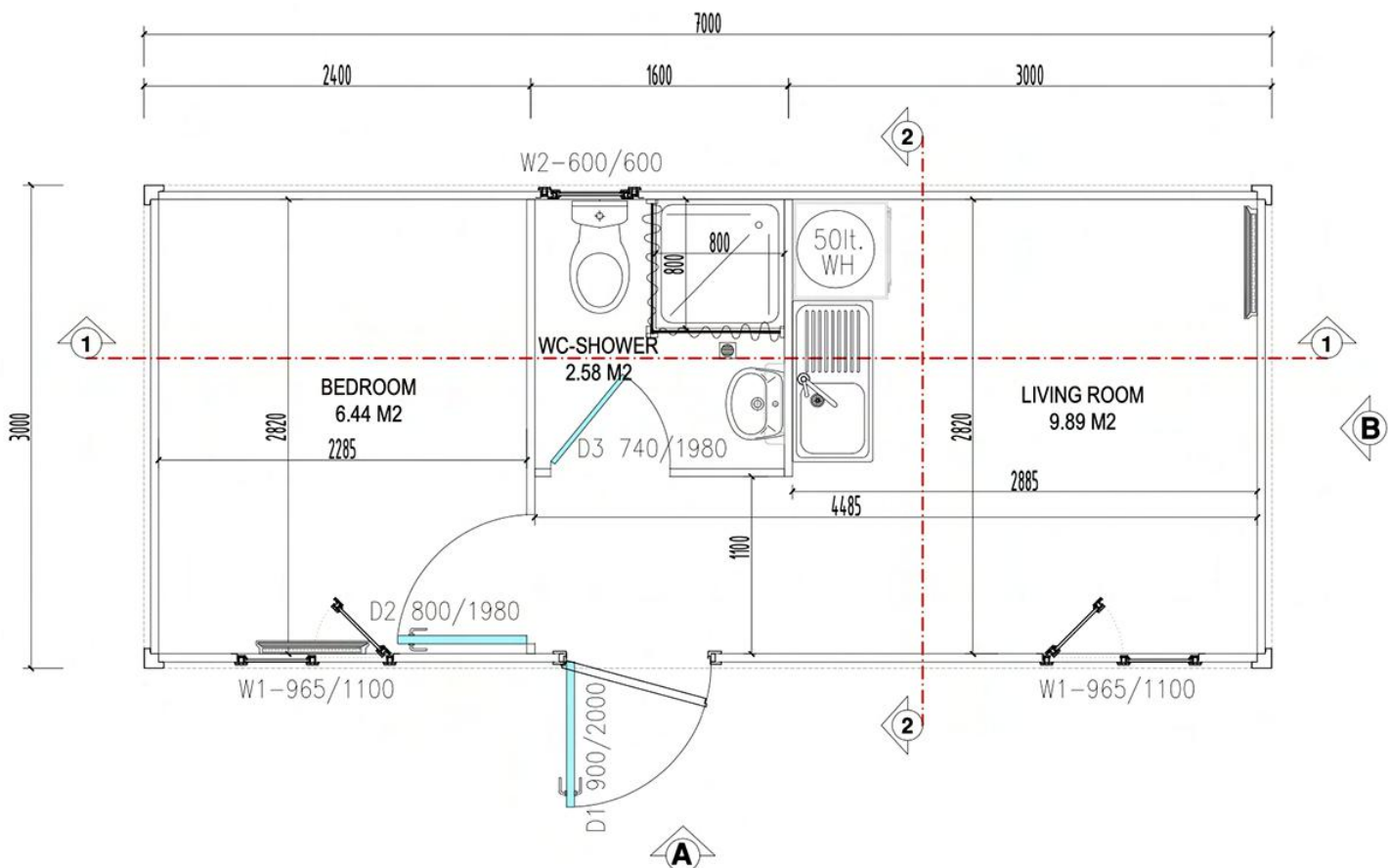
Architectural Plan

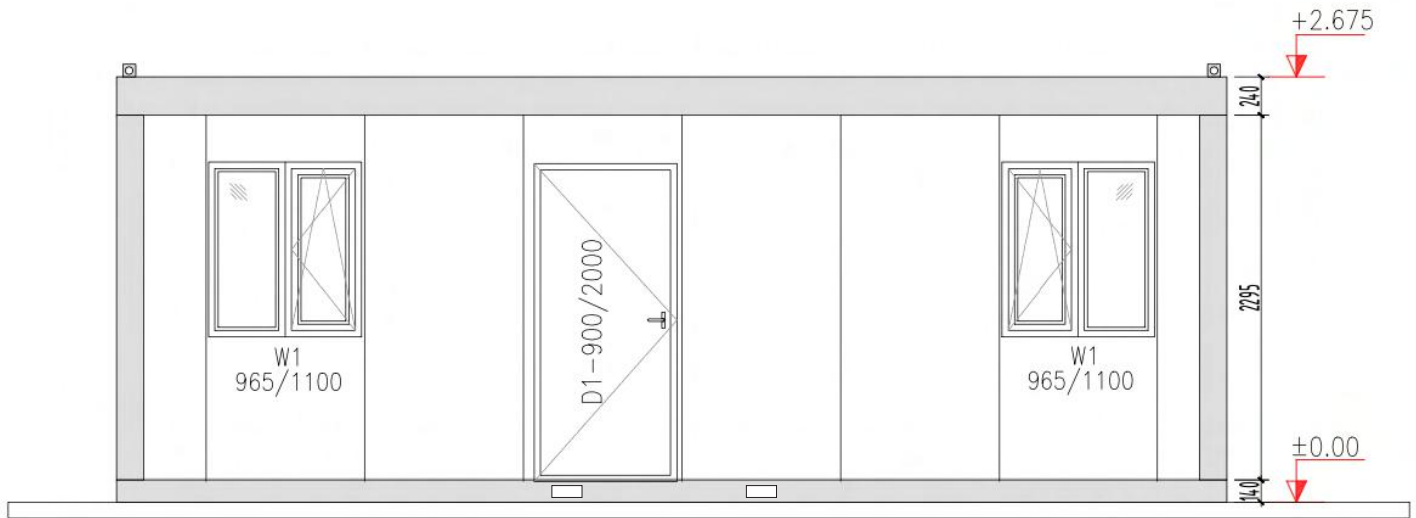
Area: 21 m² 3.00 x 7.00 m Dwelling Unit

Living Room: 9.89 m²

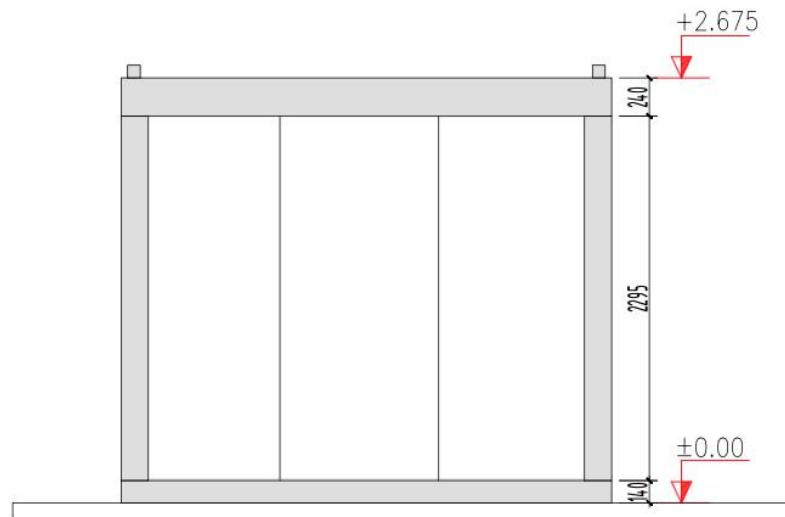
Bedroom: 6.44 m²

WC-Shower: 2.58 m²

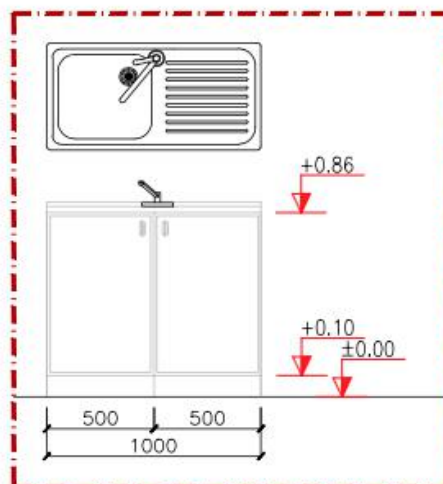




ELEVATION A



ELEVATION B





R2USE



3D Plans





Transportation



Warranty

We serve one-year warranty on problems caused by production

Quality & Safety





Photo Gallery





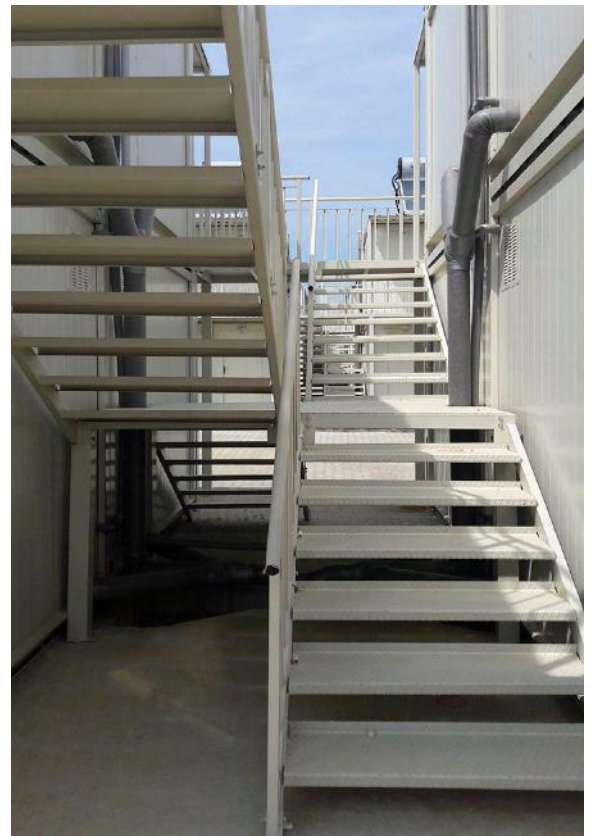








2 Floor solution – 8 units & 4 units







R2USE

www.r2use.com

+972-505611500

Showroom and Logistic center - Mevo Horon

TASSA