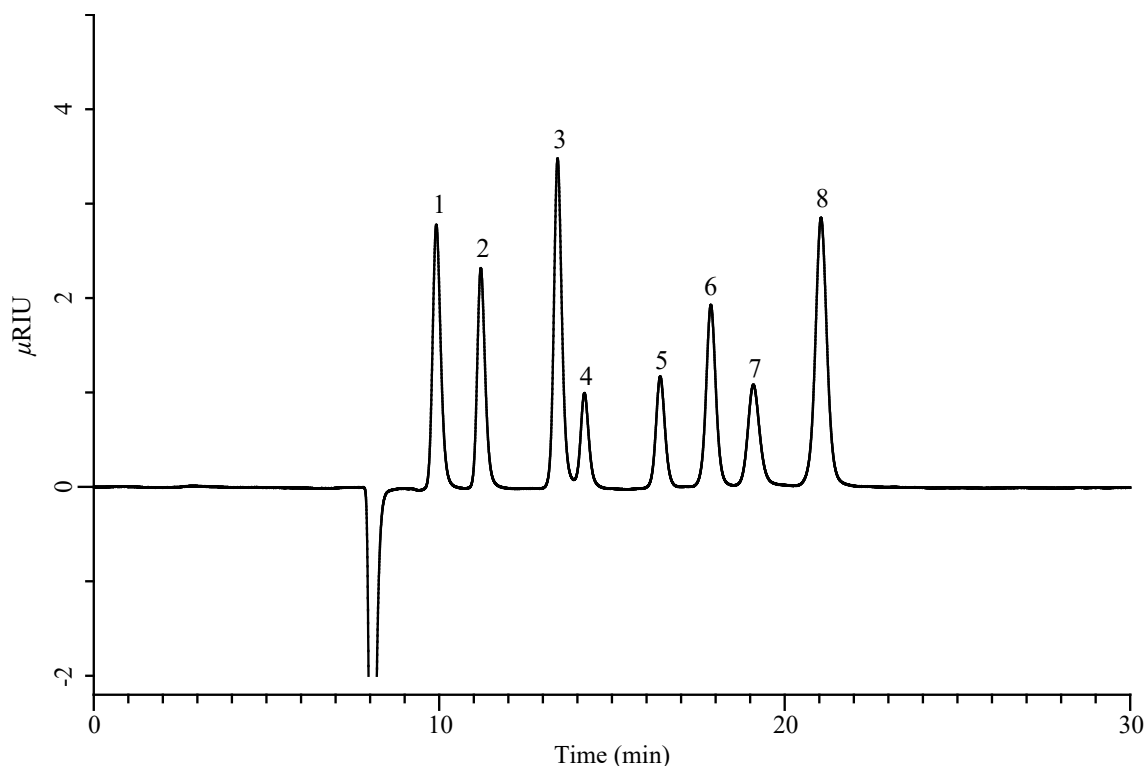


# InertSearch™ for LC

Inertsil® Applications

## Analysis of Organic acid, Sugar, Aldehyde and Alcohol

Data No. LB810-1027



### Conditions

**System** : Chromaster HPLC system (HITACHI)  
**Column** : InertSustain Phenyl (GL Sciences Inc.)  
(5  $\mu$  m, 150 x 4.6 mm I.D.)  
InertSphere FA-1 (GL Sciences Inc.)  
(9  $\mu$  m, 300 x 7.8 mm I.D.)  
**Column Cat. No.** : 5020-16327 + 5020-11003  
**Eluent** : 9 mM HClO<sub>4</sub> in H<sub>2</sub>O  
**Flow Rate** : 0.8 mL/min  
**Col. Temp.** : 35 °C  
**Detection** : RI  
**Injection Vol.** : 20  $\mu$  L  
**Sample** : Standard

### Analyte:

1. Glucose	250 mg/L
2. Malic acid	250 mg/L
3. Formaldehyde	0.04 %
4. Formic acid	250 mg/L
5. Acetic acid	250 mg/L
6. Methanol	0.2 %
7. Acetaldehyde	0.5 %
8. Ethanol	0.1 %