

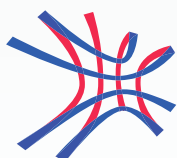
大专及学士学位课程 UNDERGRADUATE PROGRAMMES

2021-22



耀中幼教 卓越童行

Experience the CIRCLES of Excellence at YCCECE



YEW CHUNG COLLEGE
OF EARLY CHILDHOOD
EDUCATION

耀中幼教學院

Scholarships and Awards for Admissions 入学奖学金及奖项

\$34,000

average scholarship / award amount for each new student
每名新生的平均入学奖学金 / 奖项金额为 \$34,000

\$35,120

NMTSS for 2026 / 27 from the Government of Hong Kong for BEdeCE programme
2026 / 27 学年，香港政府为学士课程提供的最高免入息审查资助为 \$35,120

Close to 接近

~80%

students awarded with scholarships / awards for admissions
学生获得入学奖学金 / 奖项



QR code to Scholarships details
扫描二维码了解更多奖学金资料

Career Path of Kindergarten Teacher 幼儿园教师就业晋升阶梯

Principal 校长
\$47,370-\$73,840

Vice-Principal 副校长
\$41,780-\$58,500

Head Teacher 主任
\$33,430-\$52,940

Teacher 教师
\$25,060-\$44,570

Starting Salary 幼教起薪点：
HK\$25,060
(AY 2025/26 学年)

Starting Salary 起薪

Other Career Opportunities 其他就业可能性：

Child Care Worker/Supervisor
幼儿工作人员 / 中心主管

Research Staff
研究工作

Family Service Social Worker
家庭服务社工

Early Childhood Consultant
幼儿教育顾问

and more!
及更多！

90+%

Average employment rate of YCCECE graduates
耀中幼教学院
毕业生平均就业率



QR code to Programme details
扫描二维码了解更多课程资料

How to Apply 入学申请程序

Complete Application

- Apply via <https://apply.yccece.edu.hk/>
- Create a new account for submitting application
- Applicants are required to settle the non-refundable application fee

Interview Arrangements

- Applicants will be invited to attend an admission interview
- Upon passing the admission interview, applicants will receive a conditional or confirmed offer

Offer Acceptance

Applicants are required to –

- Complete the registration procedures
- Settle the registration fee

01

递交申请

- 浏览 <https://apply.yccece.edu.hk/>
- 建立新帐户以递交申请
- 申请人须缴交报名费，录取与否概不退还

02

面试安排

- 学院将联络申请人安排入学面试
- 如申请人通过面试，将收到有条件 / 确认录取

03

确认学位

- 申请人必须—
- 完成注册程序
- 支付注册费

Content 目录

02

YCCECE Milestones
耀中幼教学院创校历史

04

Why YCCECE
认识耀中幼教学院

06

The Future Begins at YCCECE
未来，由耀中展开

08

Study Pathways in YCCECE
迈向专才之路

10

Bachelor of Education (Honours) in Early Childhood Education
幼儿教育荣誉学士

12

Bachelor of Social Sciences (Honours) in Child Development and Psychology
儿童发展与心理学(荣誉)社会科学学士

14

Higher Diploma in Early Childhood Education
幼儿教育高级文凭

16

Associate in Child Studies and Psychology
儿童研究与心理学副学士

18

Diploma in Early Childhood Education and Care
幼儿教育照顾文凭

20

Admission Requirements
入学要求

22

Practicum Arrangement
实习安排

23

Field Experience & Overseas Exposure
幼教体验及海外学习活动

25

Partnership and Collaboration
合作伙伴

26

Yew Chung Yew Wah Teachers of Tomorrow Scheme (TOT)
耀中耀华明师计划

27

Student Support Services
学生支援服务

28

Yew Chung Approach to Early Childhood Education
耀中幼教教学法

29

Tuition Fee (Academic Year 2026/27)
学费(2026/27 学年)

YCCECE Milestones

耀中幼教学院创校历史

Establishment of YCCECE 耀中幼教学院成立

Yew Chung College of Early Childhood Education (YCCECE) was established - being the first and only specialist institute of Early Childhood Education in Asia.

耀中幼教学院成立，成为亚洲首间专注幼儿教育的高等学校。

The Beginning of Yew Chung Education

耀中教育起点

First Yew Chung School and Kindergarten was founded.

成立第1所耀中学校暨幼儿园。



Revolutionised Early Childhood Education in Hong Kong 革新香港的幼儿教育

Dr Betty Chan Po-king, Madam Tsang Chor Hang's daughter and currently chairperson of the Board of Governors, revolutionised Early Childhood Education in HK by introducing play-based learning and child-centred approach.

陈保琼博士（创办人曾楚珩女士的女儿及现任耀中幼教学院校董会主席）在美国完成学业后秉承母志，延续耀中的优质教育使命。陈博士率先革新香港的幼儿教育，引入开放课室的概念，推广寓学习于游戏的崭新思维。



1932

1970s

2014

2008

2018



Widened Education Network 扩展教育网络

Yew Chung Community College (YCCC) was established to offer accredited associate degree programmes in 2008.

耀中社区书院于2008年成立并提供受认可的副学位课程。

Launching Higher Diploma in Early Childhood Education programme 开办幼儿教育高级文凭课程

YCCC became the first private higher education institution in Hong Kong to offer formal teacher training with its Higher Diploma in Early Childhood Education programme that nurtured qualified Early Childhood Education practitioners with academic excellence. Graduates could obtain all 4 professional qualifications issued by the Education Bureau and Social Welfare Department.

耀中社区书院是香港首间获政府批准提供辅助师培训的自资院校并开办幼儿教育高级文凭课程，培育优秀幼教工作者，毕业生可获由教育局及社会福利署颁发的4个专业资格。

Establishment of Mengxue Institute 中华蒙学苑成立

YCCECE Mengxue Institute was officially established on 14 Oct 2022.

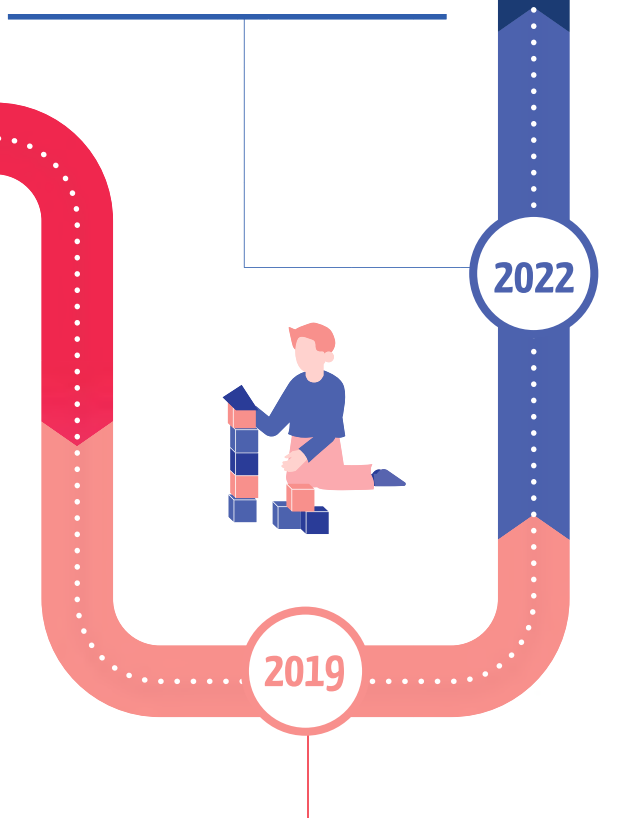
耀中幼教学院·中华蒙学苑于2022年10月14日正式成立。

Launching Certification Course for Kindergarten Principals

开办幼儿园校长资格培训证书课程

First private Higher Education Institution in Hong Kong offered the Certification Course for Kindergarten Principals.

学院开办「幼儿园校长资格培训证书课程」，成为本港首间开办幼儿园校长资格培训证书课程的自资院校。



Establishment of Pamela Peck Discovery Space 耀学园落成

Pamela Peck Discovery Space (PPDS) is a specialist play space and living lab on campus designed for children from birth to age 8 and their families, offered by the Yew Chung Early Childhood Discovery Centre (YCECDC).

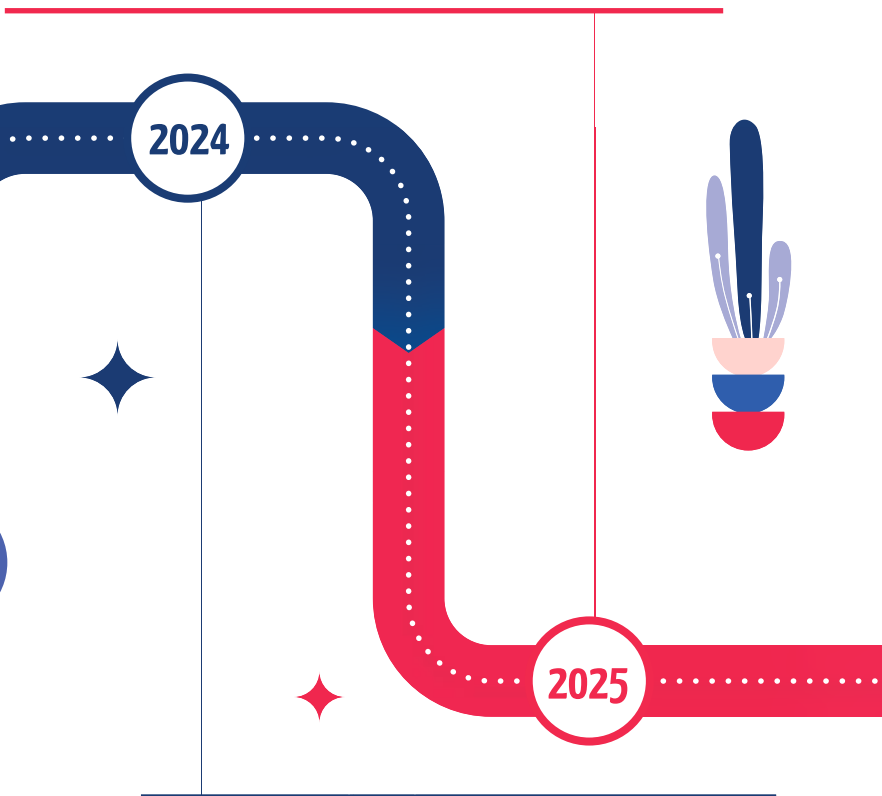
耀中幼教发展中心的耀学园探索空间是一个为婴儿至8岁的儿童及家庭而设的学习环境及生活实验室。



Launching Postgraduate Programmes 开办研究生课程

Officially launched Postgraduate Diploma in Education (Early Childhood Education) and Master of Education programmes.

耀中幼教学院正式推出全新研究生课程：学位教师教育深造文凭(幼儿教育)及教育学硕士课程。



Establishment of the CHERI 楚珩教育研究所成立

The Chor Hang Educational Research Institute (CHERI) was established at YCCECE.

楚珩教育研究所(楚珩研究所)在耀中幼教学院成立。



Chor Hang Educational
Research Institute
楚珩教育研究所

Successfully achieved institutional accreditation for operating Postgraduate programmes

成功通过研究生课程的机构评审

The College has successfully achieved institutional accreditation for operating Postgraduate programmes at Qualifications Framework (QF) Level 6 with the Hong Kong Council for Accreditation of Academic and Vocational Qualifications (HKCAAVQ), paving the way for new degrees to be launched in the 2025 / 26 Academic Year.

学院成功通过香港学术及职业资历评审局对开办资历架构第六级的机构评审，可于2025/26学年推出全新的研究生课程。

Why YCCECE 认识耀中幼教学院

1st

First and only tertiary institution specialising in
Early Childhood Education (ECE) in Asia
亚洲首间及唯一专注幼儿教育的专上院校

1st

Self-financing tertiary institution which provides ECE teachers'
training programmes in Hong Kong
全港首间提供幼儿教育教师培训课程的自资专上院校

4 ECE

4 ECE specialised concentrations^
4 个幼儿教育专修范畴 ^

4



Graduates obtain 4 professional qualifications required to
be ECE teachers in Hong Kong*
毕业生可取得在香港担任幼儿教育教师所需的 4 项专业资格 *



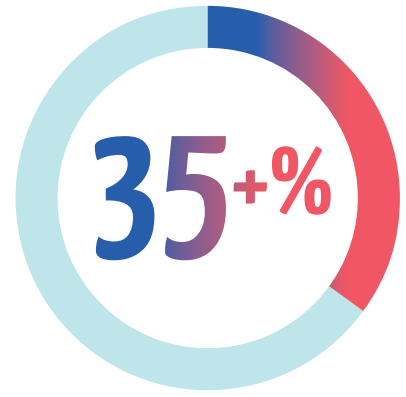
150+

Kindergartens, child care centres and early childhood
education settings as practicum partners
幼儿园、幼儿中心及幼儿教育机构实习伙伴

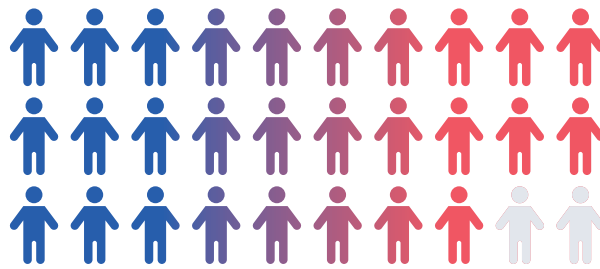
Close to
接近

~80%

Students receive scholarships and awards for admissions
学生获得入学奖学金及奖项



Annual budget is spent on ECE researches and projects
每年超过 35% 预算用于发展幼教相关研究和项目

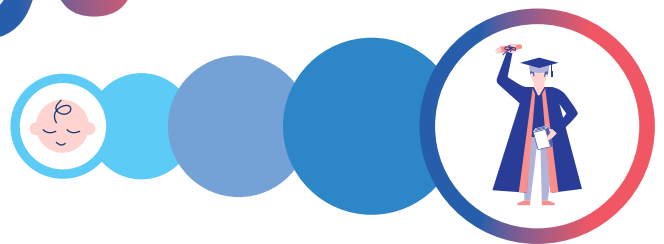


28,000+

Children visit Pamela Peck Discovery Space (PPDS) living laboratory annually
每年超过 28,000 名孩子体验「耀学园」学习实验室

90+

Years of history, with the completion of a novel "B to P" (from Baby to Postgraduate) Pathway
超过 90 年历史，从「婴儿到教育学硕士」全学段教育



Years of Pioneering International Education in Chinese Mainland
开拓中国内地国际教育领域逾 30 年

^ Applicable to Bachelor's Degree programme 适用于学士课程

* Applicable to Postgraduate Diploma, Bachelor's Degree and Higher Diploma programmes (ECE only)
适用于深造文凭、学士及高级文凭课程 (仅限幼儿教育)

The Future Begins at YCCECE

未来，由耀中展开



01

Immediate Professional Qualifications 即时专业资格优势

Accredited by the Education Bureau and the Social Welfare Department of Hong Kong, graduates are awarded 4 professional qualifications: eligible for registration as a Qualified Kindergarten Teacher, Child Care Worker, and Child Care Centre Supervisor, as well as meeting the requirements for Special Child Care Worker. This prepares them for further studies and a career in early childhood education.

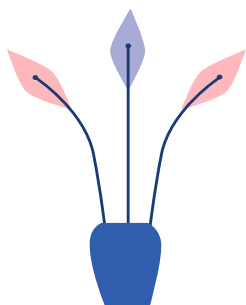
获香港教育局及社会福利署认可，毕业生具备 4 个专业资格：可注册为合格幼儿园教师、幼儿工作人员、幼儿中心主管，并符合特殊幼儿工作人员资格，为未来升学及投身幼儿教育事业作好准备。

02

Strong Demand in Premium Education Market 精英化教育需求强劲

Declining birth rates have concentrated resources on high-quality early childhood education. YCCECE graduates are highly sought after by top local and international kindergartens.

出生率下降令资源更集中于优质幼儿教育，耀中幼教毕业生深受本地及国际顶级幼儿园青睐。



05

Overseas Professional Recognition 海外专业认可

Graduates are eligible to apply for the Singapore Early Childhood Development Agency (ECDA) Early Childhood Teacher Licence, gaining significant competitive advantage in Asia's top Early Childhood Education systems.

毕业即具资格申请新加坡幼儿培育署幼儿教师执照，在亚洲顶尖幼儿教育体系中具显著竞争优势。



03

Unique Advantage in the AI Era AI 时代的独特优势

Accompanying children in their holistic development, empathy, emotional intelligence and social-emotional learning are core abilities that AI cannot replace. Early childhood education is one of the most future-proof and meaningful professions globally.

陪伴儿童全面发展，同理心、情绪智能及社会情绪学习等核心能力是 AI 无法取代的。幼儿教育是全球最具长远价值的专业之一。

04

Diverse Global Career Pathways 多元全球发展路径

Open up multiple career paths in teaching, institutional leadership, EdTech, research, entrepreneurship in child-related sectors, and child psychology, spanning Hong Kong, Greater Bay Area and globally.

开拓儿童领域的教学、机构领导、教育科技、研究、创业及心理辅导等多元职业路径，涵盖香港、大湾区及全球。

06

Unique Hands-on Learning Facilities 独特实践学习设施

Exclusive access to the Pamela Peck Discovery Space (PPDS) - Hong Kong's first specialist interactive exploration space and unique "teaching and learning laboratory" - providing immersive real-world experience in child observation, parent-child interaction and play-based education.

独有的耀学园 — 香港首个互动探索空间，为学生及学院提供 1 个独特的「教与学实验室」，提供沉浸式幼儿观察、亲子互动及游戏为本教育的真实专业体验。

07

Meaningful and Purposeful Career 充满意义的事业

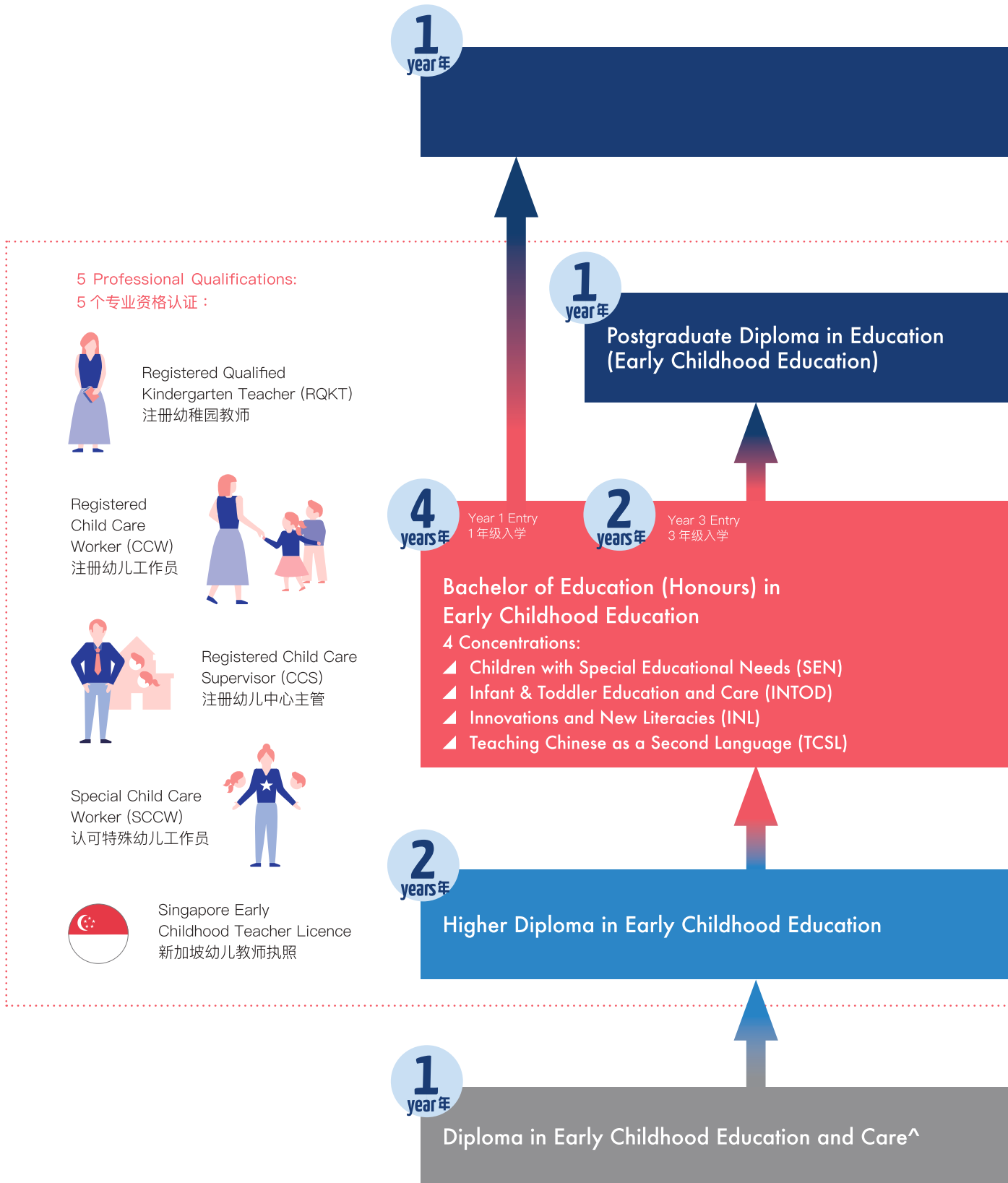
Accompany and witness children's growth and changes every day, becoming a respected early childhood educator and life mentor who shapes the future.

陪伴并见证孩子的成长变化，成为塑造未来的幼儿教育工作者与生命导师。



Study Pathways in YCCECE

迈向专才之路



Medium of Instruction 授课语言:

E English 英语 **广** Cantonese 广东话 **普** Putonghua 普通话

4 years 4 Years
4 年制

2 years 2 Years
2 年制

1 year 1 Year
1 年制



Master of Education 教育学硕士

E

学位教师教育深造文凭 (幼儿教育)

E



幼儿教育荣誉学士

4个专修范畴:

- ▲ 有特殊教育需要的儿童 (SEN)
- ▲ 婴幼儿教育与照顾
- ▲ 创新与新素养
- ▲ 汉语作为第二语言教学

E

4
years年

Year 1 Entry
1 年级入学

2
years年

Year 3 Entry
3 年级入学

Bachelor of Social Sciences
(Honours) in Child
Development and Psychology

儿童发展与心理学(荣誉)
社会科学学士

E



幼儿教育高级文凭

E



2
years年

Associate in Child Studies
and Psychology

儿童研究与心理学
副学士

E

普



幼儿教育照顾文凭 ^

E

广



课程资讯将适时更新。请留意学院网页 www.yccece.edu.hk.
 Programme information will be updated in due course.
 Please refer to the college website for the latest information www.yccece.edu.hk.

^ 此课程暂不接受内地生申请。
 This programme is currently not open to
 applications from Mainland students.



Bachelor of Education (Honours) in Early Childhood Education 幼儿教育荣誉学士



The Bachelor of Education (Honours) in Early Childhood Education (BEdECE) delivers a rigorous academic foundation to develop world-class educators well-versed in contemporary and international early childhood education theories. Designed for both aspiring and practising professionals, the programme offers flexible multi-entry and multi-exit pathways (Year 1), accommodating learners at different stages of their professional and lifelong learning journey.

Accredited by the Education Bureau and the Social Welfare Department of Hong Kong, graduates are awarded 4 professional qualifications: eligible for registration as a Qualified Kindergarten Teacher, Child Care Worker, and Child Care Centre Supervisor, as well as meeting the requirements for Special Child Care Worker. This prepares them for further studies and a career in early childhood education. For experienced practitioners, the Year 3 entry route serves as an efficient top-up pathway leading towards Kindergarten Principal certification, equipping them to become evidence-based leaders in the field.

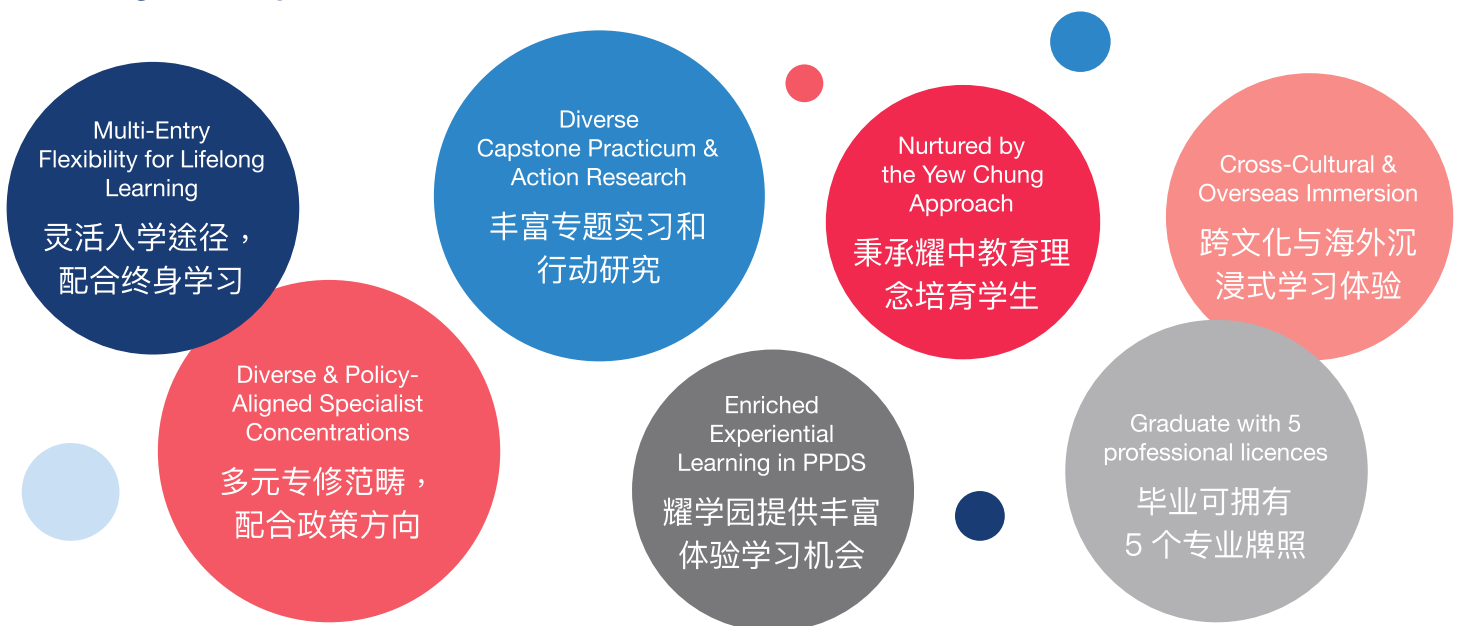
Graduates are also eligible to apply for the Singapore Early Childhood Teacher Licence (L2 or above) and become a teacher in Singapore.

幼儿教育荣誉学士课程建构严谨的学术基础，致力培育具国际视野、精通现代及国际幼儿教育理论的顶尖教育工作者。课程适合有志投身业界及现职从业人员报读，并设有弹性入读途径及毕业安排（可于1年级或3年级入学），以配合学生在不同阶段的专业和终身学习。

获香港教育局及社会福利署认可，毕业生具备4个专业资格：可注册为合格幼儿园教师、幼儿教师、幼儿中心主管，并符合特殊幼儿教师资格，为未来升学及投身幼儿教育事业作好准备。对于在职幼教从业人员，3年级入学途径提供高效的升读通道，毕业后可进一步修读教育局认可的幼儿园校长证书课程，装备他们成为具实证基础的幼儿教育领袖。

符合新加坡幼儿教师执照（L2或以上）的申请资格，于当地做老师。

Programme Special Features 课程特色



Programme Objectives 课程目标

1. Engage in lifelong learning with capability for independent learning and critical thinking
2. Pursue career, further study and ongoing professional development
3. Enhance career objectives in ECE or related areas
4. Demonstrate ability to critically review, consolidate and extend systematic knowledge and skills about the holistic nature of child development
5. Function as effective team members of a multidisciplinary team and exercise appropriate judgment in the planning, design, evaluation, and management of activities in various areas of involvement
6. Demonstrate leadership and the ability to apply knowledge and skills in ECE to meet the increasingly diverse needs of children and families in Chinese Mainland, Hong Kong and the world

1. 实践终身学习，提升自主学习和批判性思考的能力
2. 支持职业发展、进修学习与持续专业发展
3. 在幼儿教育 (ECE) 或相关领域深化职业发展目标
4. 展现批判性审视、整合及拓展系统化知识与技能之能力，以掌握儿童发展的整体特质
5. 作为跨领域团队成员，能在各项活动的规划、设计、评估与管理过程中，展现适切的判断力
6. 展现领导才能，运用幼儿教育领域的知识与技能，满足内地与香港及全球儿童与家庭日益多元化的需求

Professional Qualifications 专业资格

- Recognised by the Education Bureau (EDB) for the Certificate in Early Childhood Education [C(ECE)] qualification, and as meeting the requirement for registration as Qualified Kindergarten Teachers under the Education Ordinance
- Recognised by the Social Welfare Department (SWD) for registration as Child Care Workers and Child Care Supervisors
- Be qualified as Special Child Care Workers with the Social Welfare Department (SWD)
- Eligible to apply for the Singapore Early Childhood Teacher Licence (L2 or above)
- 符合教育局对「合格幼儿园教师」的培训要求，及可注册为幼儿园教师
- 获社会福利署认可注册为「幼儿工作人员」及「幼儿中心主管」
- 获社会福利署认可之「特殊幼儿工作人员」资历
- 符合新加坡幼儿教师执照 (L2 或以上) 的申请资格

Career Opportunities 就业前景

Kindergarten Teacher
幼儿园老师 /
Child Care Worker
幼儿工作人员



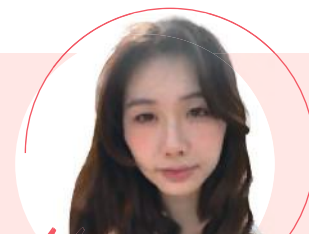
Executive in
early childhood
education settings
幼儿教育机构行政主管



Kindergarten Principal
幼儿园校长 /
Child Care Supervisor
幼儿中心主管



Research opportunities
in tertiary institutions
or other organisations
于高等院校或其他机构从事
学术研究工作



Koey
杨颖童
Yeung Wing Tung

Graduate of BEdECE in 2025
2025 幼儿教育荣誉学士学位毕业生

“Throughout my journey at YCCECE, I have gained a comprehensive insight into Early Childhood Education. More importantly, I have developed my own teaching philosophy. I now understand that children are the leading role in their own learning. As educators, we should step back and allow children to be active participants, providing them with opportunities to try and explore.”

「在耀中幼教学院的这段旅程中，我对幼儿教育获得了全面的认识。更重要的是，我建立了自己的教学理念。我体悟到儿童才是自身学习的主角。身为教育者，我们应该退后一步，让儿童成为积极的参与者，并为他们提供尝试与探索的机会。」

* Yew Chung Yew Wah Teachers of Tomorrow Scheme Awardee, working at YCIS- HK in 2025
2025 耀中耀华「明师计划」任教于香港耀中国际学校



QF Level 资历级别

Qualifications Framework (QF) Information 资历架构

QR Registration Number 资历名册：

18/000441/L5

Registration Validity Period 登记有效期：

01/09/2018 - 31/08/2028



Bachelor of Social Sciences (Honours) in Child Development and Psychology 儿童发展与心理学(荣誉)社会科学学士

4
years 年

2
years 年

E

The Bachelor of Social Sciences (Honours) in Child Development and Psychology programme provides students with a comprehensive and rigorous academic foundation in child development and psychology. The programme equips students with in-depth theoretical knowledge, research skills, and practical understanding to effectively address contemporary issues in child development in both local and global contexts.

Graduates will be able to critically analyse theories, historical developments, and research methods in child development and psychology; apply scientific reasoning and critical thinking to interpret psychological phenomena within complex systems and to design and conduct basic research involving children and families; develop strong interpersonal and professional communication skills, together with ethical and legal awareness, to enable effective multidisciplinary collaboration; evaluate psychological science and practice to meet the diverse needs of children and families in Hong Kong, Chinese Mainland, and the world; and acquire systematic knowledge and skills that prepare them for professional training or advanced research in related social science fields.

The programme prepares students for careers in child development, psychology, education, and related sectors, or for further postgraduate studies. Graduates will be equipped to make meaningful contributions to the well-being of children, families, and communities through evidence-based practice and research.

儿童发展与心理学(荣誉)社会科学学士课程为学生提供全面而严谨的学术基础,涵盖儿童发展及心理学范畴。本课程旨在培养学生深厚的理论知识、研究技能和实践能力,使其能够有效应对本地及全球儿童发展的当代议题。

毕业生将能够批判性地分析儿童发展与心理学的理论、历史发展和研究方法;运用科学推理和批判性思维来解读复杂系统中的心理现象,并设计和开展涉及儿童和家庭的基础研究;培养强大的人际交往和专业沟通能力,以及伦理和法律意识,从而实现有效的跨学科合作;评估心理科学和实践,以满足中国香港、中国内地及全球儿童和家庭的多元化需求;并掌握系统的知识和技能,为他们在相关社会科学领域的专业培训或高级研究做好准备。

本课程为学生在儿童发展、心理学、教育及相关领域的职业发展或继续攻读研究生学位奠定了基础。毕业生将具备透过实证实践和研究为儿童、家庭和社区的福祉做出有意义贡献的能力。

4
years 年
4 Years (Year 1 Entry)
4 年制 (1 年级入学)

2
years 年
2 Years (Year 3 Entry)
2 年制 (3 年级入学)

E
English-medium Instruction
英语授课

Programme Special Features 课程特色



Programme Objectives 课程目标

1. Possess a strong scientific inquiry and critical thinking skills in integrating the theoretical and scientific bases of child development and psychology needed to provide services to and/or execute research plans with children and families within complex systems and organisations in a diverse society
 2. Function as effective team members of a multidisciplinary team and develop flexible interpersonal approaches that optimise information exchange and relationship development in various areas of involvement with children
 3. Demonstrate ethically and socially responsible capabilities and adopt values that build community at local, national, and global levels
1. 拥有扎实的科学探究精神和批判思考能力，能够灵活结合儿童发展及心理学的理论知识，在香港这个多元社会的环境中，为儿童及家庭提供适切的支援服务，及有系统地开展相关研究工作
2. 能够在跨专业团队中有效协作，灵活运用不同的人际沟通方式，促进与儿童相关各方面的资讯交流及关系建立
3. 展现合乎伦理及社会责任的专业能力，并秉持能促进本地、国家及全球层面社群共建的价值观

Professional Qualifications 专业资格

- Graduates are eligible to apply for Graduate Membership of the Hong Kong Psychological Society. Please refer to the latest application requirements on the official website: https://www.hkps.org.hk/en/membership/membership_guide
- 毕业生符合申请香港心理学会毕业生会员的资格，请参阅网站内最新申请条件：https://www.hkps.org.hk/en/membership/membership_guide

Career Opportunities 就业前景

Early Years Educator
幼儿教育工作者 /
Early Childhood Consultant
幼儿教育顾问

Children's Book Editor
儿童刊物编辑

Child Psychologist
儿童心理学家 /
Family Services Social Worker
家庭服务社工

Research opportunities
in tertiary institutions or
other organisations
于高等院校或其他机构从
事学术研究工作

QF Level 资历级别

Qualifications Framework (QF) Information 资历架构

QR Registration Number 资历名册：
26/000044/L5

Registration Validity Period 登记有效期：
01/09/2026 - 31/08/2031



Higher Diploma in Early Childhood Education 幼儿教育高级文凭



The Higher Diploma in Early Childhood Education (HDECE) upholds a rigorous academic standard to develop passionate and competent early childhood educators with up-to-date ECE knowledge and practical skills. This two-year full-time programme, built on the Yew Chung Education Foundation's 90-year legacy of play-based, child-centred, experiential and individualised education. It prepares students to support the holistic development of young children and address diverse needs in Hong Kong, Chinese Mainland and global contexts.

Students will undertake practicum placements in a range of early childhood settings, including international kindergartens, local kindergartens, and special education institutions, with exclusive opportunities at Yew Chung International School (Kindergarten). Students will also receive instruction from world-renowned early childhood education specialists and have the opportunity to participate in international conferences, broadening their global perspective within the field of early childhood education. Graduates emerge as independent learners, effective communicators, collaborative team members with emerging leadership, and critical thinkers.

Accredited by the Education Bureau and the Social Welfare Department of Hong Kong, graduates are awarded 4 professional qualifications: eligible for registration as a Qualified Kindergarten Teacher, Child Care Worker, and Child Care Centre Supervisor, as well as meeting the requirements for Special Child Care Worker. This prepares them for further studies and a career in early childhood education.

Graduates are also eligible to apply for the Singapore Early Childhood Teacher Licence (L2 or above) and become a teacher in Singapore.

幼儿教育高级文凭课程 (HDECE) 秉持严谨的学术标准, 旨在培养充满热情、能力卓越的幼儿教育工作者, 使其掌握最新的幼儿教育知识和实践技能。该课程为期 2 年, 全日制授课, 以耀中教育机构 90 年来的办学理念为基石——以游戏为基础、以儿童为中心、体验式和个性化的教育。课程旨在培养学生支持幼儿全面发展, 并能满足中国香港、中国内地及全球不同幼儿的需求。

学生将于多元化的幼儿教育环境中进行实习, 包括国际幼儿园、本地幼儿园及特殊教育机构, 并可参与由耀中国际学校 (幼儿园部) 提供的专属实习机会。学生亦将由世界知名的幼儿教育专家亲自授课, 并有机会参与国际研讨会, 拓宽在幼儿教育领域的全球视野。毕业生将成为独立学习者、高效沟通者、具有领导特质的团队成员和批判性思考者。

获香港教育局及社会福利署认可, 毕业生具备 4 个专业资格: 可注册为合格幼儿园教师、幼儿教师、幼儿中心主管, 并符合特殊幼儿教师资格, 为未来升学及投身幼儿教育事业作好准备。

符合新加坡幼儿教师执照 (L2 或以上) 的申请资格, 于当地做老师。

Programme Special Features 课程特色

Strong Foundation for Lifelong Learning
为终身学习奠定坚实基础

Extensive Practical and Experiential Learning
提供大量实习及体验学习机会

Nurtured by the Yew Chung Approach
秉承耀中教育理念培育学生

100% English Learning Environment
提供全英语学习环境

Diverse & Inclusive Focus
强调多元包容, 照顾不同需要

Enriched Experiential Learning in PPDS
耀学园提供丰富体验学习机会

Graduate with 5 professional licences
毕业可拥有 5 个专业牌照



2 Years
2 年制



English-medium Instruction
英语授课



Registered Qualified Kindergarten Teacher (RQKT)
注册幼儿园教师



Registered Child Care Worker (CCW)
注册幼儿教师



Registered Child Care Supervisor (CCS)
注册幼儿中心主管



Special Child Care Worker (SCCW)
认可特殊幼儿教师



Singapore Early Childhood Teacher Licence
新加坡幼儿教师执照

Programme Objectives 课程目标

1. Engage in lifelong learning with capability for independent learning and critical thinking
2. Pursue further study, professional development and / or career in Early Childhood Education
3. Acquire and demonstrate knowledge and skills about children's development in the early years, both typical and atypical, and the role of contemporary teaching practices, culture, and the family as influences that shape children's development
4. Function as effective team members of a multidisciplinary team and contribute to and coordinate activities in various areas
5. Demonstrate competent language ability, IT, interpersonal and other generic skills as well as awareness of many issues of Chinese Mainland, Hong Kong and the world, including professional standards and ethics guiding early childhood education and care

1. 投入终身学习，具备自主学习与批判性思考的能力
2. 在幼儿教育领域持续进修、追求专业发展，或投身相关职业
3. 掌握并展现有关幼儿发展（涵盖一般发展与特殊发展情况）的知识与技能，同时深入理解当代教学实践、文化背景，以及家庭作为塑造儿童发展的重要影响因素所担当的关键角色
4. 在跨学科团队中有效协作，为不同领域的活动作出贡献
5. 具备良好的语言能力、资讯科技应用、人际交往及其他通用技能，同时认识内地与香港及全球的重要议题，包括幼儿教育及照顾的专业标准及道德规范

Professional Qualifications 专业资格

- Recognised by the Education Bureau (EDB) for the Certificate in Early Childhood Education (C[ECE]) qualification, and as meeting the requirement for registration as Qualified Kindergarten Teachers under the Education Ordinance
- Recognised by the Social Welfare Department (SWD) for registration as Child Care Workers and Child Care Supervisors
- Be qualified as Special Child Care Workers with the Social Welfare Department (SWD)
- Eligible to apply for the Singapore Early Childhood Teacher Licence (L2 or above)
- 符合教育局对「合格幼儿园教师」的培训要求，及可注册为幼儿园教师
- 获社会福利署认可注册为「幼儿工作人员」及「幼儿中心主管」
- 获社会福利署认可之「特殊幼儿工作人员」资历
- 符合新加坡幼儿教师执照（L2 或以上）的申请资格

Career Opportunities 就业前景

Kindergarten Teacher
幼儿园老师 /
Child Care Worker
幼儿工作人员



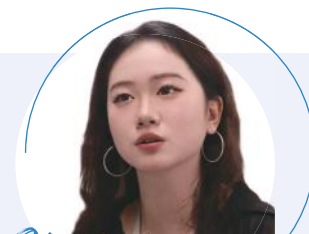
Executive in early
childhood education
settings
幼儿教育机构行政主管



Kindergarten Principal
幼儿园校长 /
Child Care Supervisor
幼儿中心主管



Career pathways in kindergartens, child care centres (including SEN settings), research support, publishing, arts and design, playgroups, tutoring, or general administrative roles. 可于幼儿园、幼儿中心（包括特殊教育需要服务）、研究支援、出版、艺术与设计、游戏小组、补习教育或一般行政等领域发展。



Charlie

陶美熹

Tao Meixi

2025 HDECE Graduate
2025 幼儿教育高级文凭毕业生

“As a student from Chinese Mainland, Yew Chung College of Early Childhood Education was my first home in Hong Kong. Its supportive environment helped me adapt quickly. Through theoretical learning, three practicums, and academic conferences, I gained invaluable experience - preparing me to become a reflective educator and a more mature individual.”

「作为一名内地学生，耀中幼教学院是我在香港的第一个家。学院充满支持与关怀的学习环境帮助我快速适应。通过理论学习、三次实习以及学术会议，我收获了无比宝贵的经验，这不仅让我成为一名善于反思的教育工作者，也让我成长为一个更成熟的人。」



QF Level 资历级别

Qualifications Framework (QF) Information 资历架构

QR Registration Number 资历名册：

18/000466/L4

Registration Validity Period 登记有效期：*

29/06/2018 - 31/08/2031

* This Programme has successfully completed accreditation by the Hong Kong Council for Accreditation of Academic and Vocational Qualifications and is subject to final approval.

本课程已成功通过香港学术及职业资历评审局的评审，尚待最后批准。



Associate in Child Studies and Psychology 儿童研究与心理学副学士

2
years 年

E

普

The Associate in Child Studies and Psychology programme is designed for secondary school leavers, providing a strong foundation for progression to undergraduate studies in Early Childhood Education or related fields. It also prepares students for assistant-level roles in early childhood settings and support services. With a clear focus on critical thinking and lifelong learning, the programme equips students with core knowledge and skills in child development.

Students examine contemporary psychological approaches, cultural influences, and family dynamics that shape children's growth, while developing effective collaboration skills in multidisciplinary teams. Graduates acquire strong proficiency in language, information technology, and interpersonal communication, enabling confident interaction in diverse settings.

This programme offers an ideal entry route for students aspiring to pursue careers or further studies in child-related fields, fostering professional competence and a genuine appreciation for supporting children's development in diverse environments.

儿童研究与心理学副学士课程专为中学毕业生而设，为他们升读幼儿教育或其他相关学士学位课程奠定稳固基础，同时装备学生胜任幼儿教育机构或相关支援服务中的助理工作。课程强调批判思考与终身学习，帮助学生掌握儿童发展的核心知识与技能。

学生将学习当代心理学理论、文化影响及家庭动力如何塑造儿童成长，同时在跨专业团队中培养有效的协作能力。毕业生将具备良好的语言、资讯科技及人际沟通能力，从而在不同环境中自信地与人交流。

此课程为有志投身儿童相关领域或继续深造的学生提供理想的起步点，培养他们的专业能力，并引领他们真切体会在多元环境中支持儿童成长的重要性。

Programme Special Features 课程特色

Clear Pathway for School Leavers
为中学毕业生提供明确的
升学或就业路径

Supports Government &
Sector Priorities

配合政府及业界的
优先发展方向

ECE-Specialist Alignment
with Broader Scope
幼儿教育专业结合更广
泛的教育领域

Professional
Integrated Learning
(PIL)

专业综合学习
(PIL)

Student-
Centred &
Enriched Learning
以学生为中心，
提供丰富的学
习经验

2
years 年
2 Years
2 年制

E
English-medium Instruction
英语授课

普
Putonghua-medium Instruction
普通话授课

Programme Objectives 课程目标

1. Engage in lifelong learning with capability for independent learning and critical thinking
2. Pursue further study, professional development and/or career in Child Studies and Psychology
3. Acquire and demonstrate knowledge and skills related to children's development in the early years, encompassing both typical and atypical development
4. Explore the influence of contemporary psychological practices, cultural factors, and family dynamics on shaping children's development. Function as effective team members of a multidisciplinary team and contribute to and coordinate activities in various areas
5. Demonstrate proficiency in language, information technology, interpersonal skills, and other transferable competencies
6. Cultivate an awareness of key issues related to Chinese Mainland, Hong Kong and the global context, including the professional standards and ethical considerations that guide child studies and psychology

1. 投入终身学习，具备自主学习与批判性思考的能力
2. 继续升学、追求专业发展，或投身儿童研究与心理学相关领域
3. 掌握并应用幼儿发展的相关知识与技能，涵盖一般发展及特殊发展需要
4. 探究当代心理学应用、文化因素及家庭动力对儿童发展的影响，并在跨专业团队中有效协作，参与及协调各范畴的工作
5. 展现良好的语言能力、资讯科技应用能力、人际沟通技巧及其他通用技能
6. 认识内地与香港及全球的重要议题，并了解儿童研究与心理学领域的专业标准与伦理规范

* This programme includes three components: (i) professional courses, (ii) common core courses, and (iii) a 10-day professional integrated learning programme. 本课程包括3个部分：(i) 专业课程、(ii) 共同核心课程及 (iii) 为期十天的专业综合学习课程。

Career Opportunities 就业前景

Staff of Child and Family
Psychological Services
Agencies
儿童及家庭心理服务机构职员



Public Relations
Personnel or Assistant
公共关系人员或助理



Teaching Assistant
教学助理



Customer Service Executive
客户服务专员



QF Level 资历级别

Qualifications Framework (QF) Information 资历架构

QR Registration Number 资历名册：

25/000836/L4

Registration Validity Period 登记有效期：

01/09/2025 - 31/08/2031



Diploma in Early Childhood Education and Care[^] 幼儿教育及照顾文凭[^]

1
year 年

E

广

The Diploma in Early Childhood Education and Care programme provides students with a solid foundation of general knowledge, language proficiency, and generic skills for further studies in local QF Level 4 programmes or for assistant-level positions in early childhood education and care settings. The programme effectively integrates essential theory with practice to support young children's holistic development.

Upon completion, graduates will possess a practical understanding of young children's development and the ability to facilitate learning through play. They will demonstrate confident and responsible communication skills, a strong commitment to independent learning, cultural sensitivity, and positive attitudes in team and leadership roles. They will also develop creative, critical thinking, and problem-solving abilities to handle diverse real-world tasks.

This programme serves as an accessible entry point for students aspiring to build a career or pursue further studies in early childhood education and care. It fosters professional competence and a deep appreciation for nurturing young learners in diverse environments.

幼儿教育及照顾文凭课程旨在为学生打下稳固的基础知识、语言能力和通用技能，为升读本地资历架构第四级别课程或担任幼儿教育及照顾助理职位做好准备。课程结合理论与实践，帮助学生有效支援幼儿的发展。

毕业生将掌握幼儿发展的基本而实用的知识，并具备透过游戏促进学习的能力。他们能自信、负责地运用有效沟通技巧，展现自主学习的承担；亦能在幼儿教育环境中，以文化敏感度和积极态度参与团队合作及担当领导角色；同时培养创意、批判性思维及解决问题的能力，以应对实际工作中的多元挑战。

此课程是希望投身或深造幼儿教育及照顾行业的学生的理想入门途径，有助他们建立专业能力，并培养对在多元环境中照顾和培育幼儿的热诚与欣赏。

Programme Special Features 课程特色

Clear Entry & Progression Pathway
清晰明确的入学及升学途径

Bilingual Flexibility
提供灵活的
双语学习模式

Supports HKSAR Government Policy & Sector Demand
配合香港特区政府政策及业界需求

Aligned with YCCECE's ECE-Specialist Identity
符合耀中幼教专业定位

1
year 年
1 Year
1 年制

E
English-medium Instruction
英语授课

广
Cantonese-medium Instruction
广东话授课

[^] This programme is currently not open to applications from Chinese Mainland.
此课程暂不接受中国内地生申请。

Programme Objectives 课程目标

1. Engage in lifelong learning with the capability for independent learning
 2. Pursue further study in local QF Level 4 programmes or in overseas programmes and/or work in various fields including Early Childhood Education and Care
 3. Function as an effective team member within a learning community
1. 培养自主学习能力，实践终身学习
 2. 毕业生可选择继续修读本地资历架构第四级别课程或海外进修课程，亦可投身各行各业，包括幼儿教育与照顾等相关领域发展事业
 3. 在学习社群中积极参与，切实履行团队成员的职责

Graduation Pathways 升学途径

Articulate to full-time Higher Diploma in Early Childhood Education programme of the College
衔接本学院全日制幼儿教育高级文凭课程



Articulate to Higher Diploma or Associate Degree programmes offered in Hong Kong or overseas
衔接香港或海外高级文凭或副学士课程



Saana

Iqbal Saana Batool

2021 HDECE Graduate
幼儿教育高级文凭毕业生
2019 DECS* Graduate
2019 幼儿学文凭*毕业生

“The Diploma in Early Childhood Studies (DECS)* programme helped us build our ECE foundation through learning basic ECE theories and concepts. During my 2-week placement, I was truly inspired by the teachers who really live the life of an ECE educator. The experience motivated me to be a great ECE educator in the future.”

「修读幼儿学文凭*课程，不但让我认识幼教的基础，于幼儿园考察的2星期中更令我感受到一群现职幼儿园老师的热诚，让我更希望成为与他们一样优秀的幼教工作者。」

* This programme has been superseded by the current “Diploma in Early Childhood Education and Care” programme.
该课程已被现有的「幼儿教育与照顾文凭课程」取代。



QF Level 资历级别

Qualifications Framework (QF) Information 资历架构

QR Registration Number 资历名册：

24/000321/L3

Registration Validity Period 登记有效期：

01/09/2024 - 31/08/2031

Admission Requirements

入学要求

BEdeECE 幼儿教育荣誉学士 / BSScCDP 儿童发展与心理学 (荣誉) 社会科学学士	HDECE 幼儿教育高级文凭 / ADCSP 儿童研究与心理学副学士	DECEC 幼儿教育与 照顾文凭
HKDSE 香港中学文凭试		
HKDSE 3.3.2.A.2 Including Level 3 in Chinese Language and English Language, Level 2 in Mathematics, "Attained" (A) in Citizenship and Social Development, plus Level 2 in one elective / "Attained" in one Applied Learning subject 香港中学文凭试达 3.3.2.A.2 包括中国语文科和英国语文科达 3 级、数学科达 2 级、公民与社会发展科取得「达标」(A) 成绩、及 1 科选修达 2 级 / 应用学习科目取得「达标」(A) 成绩	HKDSE 2.2.2.2.2 Level 2 in 5 subjects including Chinese Language and English Language. If the 5 subjects include Citizenship and Social Development / Applied Learning subjects, the minimum requirement is "Attained" 香港中学文凭试达 2.2.2.2.2 5 个科目达 2 级，包括中国语文科和英国语文科；如该五科中包括公民与社会发展科 / 应用学习科目，必须取得「达标」成绩	Completion of Secondary Six or equivalent 完成中六或同等学历
IB Diploma IB 文凭		
<ul style="list-style-type: none"> A score of 24; and Level 4 in English Language 总分达 24 分；及 英国语文科达 4 级 	<ul style="list-style-type: none"> Level 4 in 2 IB subjects; and Level 3 in English Language 2 科 IB 科目达 4 级；及 英国语文科达 3 级 	N/A 不适用 *1
GCE-A Level (AL)		
<ul style="list-style-type: none"> Grade E in 2 A-Level subjects or 1 A-Level subject plus 2 AS-Level subjects, other than English Language and Chinese Language; and Grade E in English Language at A / AS-Level or Grade C in English Language in GCE-O-Level / GCSE / IGCSE or Grade B in English (Second Language) in GCE-O-Level / GCSE / IGCSE 2 科 A-Level 科目达 E 级，或 1 科 A-Level 科目及 2 科 AS-Level 科目达 E 级，不包括英国语文科及中国语文科；及 A/AS-Level 英国语文科达 E 级，或 GCE-O-Level / GCSE / IGCSE 英国语文科达 C 级或 GCE-O-Level / GCSE / IGCSE 英国语文科 (第二语言) 达 B 级 	<ul style="list-style-type: none"> Grade E in 1 A-Level subject, other than English Language and Chinese Language; and Grade E in English Language at A / AS-Level or Grade C in English Language in GCE-O-Level / GCSE / IGCSE or Grade B in English (Second Language) GCE-O-Level / GCSE / IGCSE 1 科 A-Level 科目达 E 级，不包括英国语文科及中国语文科；及 A/AS-Level 英国语文科达 E 级，或 GCE-O-Level / GCSE / IGCSE 英国语文科达 C 级，或 GCE-O-Level / GCSE / IGCSE 英国语文科 (第二语言) 达 B 级 	N/A 不适用 *1
Chinese Mainland 中国内地 ^		
<ul style="list-style-type: none"> Meet the College's requirements for admission to Chinese Mainland's key universities in JEE; and Score of 100/150 in JEE English Language or English Language Proficiency comparable to IELTS score of 5.5 普通高等学校招生全国统一考试 (高考) 成绩达学院要求的本科分数线；及 普通高等学校招生全国统一考试 (高考) 英语科达 100/150 分或英语能力相等于雅思 5.5 	<ul style="list-style-type: none"> Meet the College's requirements for admission to Chinese Mainland's 75% of key universities in JEE; and Score of 90/150 in JEE English Language or English Language Proficiency comparable to IELTS score of 5.0 普通高等学校招生全国统一考试 (高考) 成绩达学院要求的本科分数线 75%；及 普通高等学校招生全国统一考试 (高考) 英语科达 90/150 分或英语能力相等于雅思 5.0 	N/A 不适用 *1

BEdECE 幼儿教育荣誉学士 / BSScCDP 儿童发展与心理学 (荣誉) 社会科学学士

HDECE 幼儿教育高级文凭 / ADCSP 儿童研究与心理学副学士

DECEC 幼儿教育与照顾文凭

Others 其他资格

<p>Year 3 Entry 3 年级入学</p> <p>BEdECE (Full-Time and Part-Time)</p> <p>(a) Holders of YCCECE Higher Diploma in Early Childhood Education award; or</p> <p>(b) Holders of Higher Diploma awards of other institutions who are recognised at least as registered Kindergarten Teachers by the Education Bureau and as qualified to work as Child Care Workers and Child Care Supervisors by the Social Welfare Department (SWD). (HD holders admitted without having acquired the SWD's Special Child Care Worker licence will be required to take and complete some bridging courses)</p> <p>BSScCDP</p> <p>(a) Holder of YCCECE Higher Diploma in Early Childhood Education award / Associate in Child Studies and Psychology award; or</p> <p>(b) Holder of Higher Diploma / Associate Degree of other institutions in Psychology, Social Sciences or Education related field</p> <p>幼儿教育荣誉学士 (全日制及兼读制)</p> <p>(甲) 持有本院幼儿教育高级文凭证书; 或</p> <p>(乙) 持有其他院校颁发之高级文凭, 并为教育局认可的注册幼儿园教师, 以及获社会福利署认可具备担任幼儿工作人员及幼儿中心主管资格 (未取得社会福利署「特殊幼儿工作人员」牌照而获取录之高级文凭持有人, 须修读并完成部分衔接课程。)</p> <p>儿童发展与心理学 (荣誉) 社会科学学士</p> <p>(甲) 持有本院幼儿教育高级文凭证书 / 儿童研究与心理学副学士学位; 或</p> <p>(乙) 持有其他院校心理学、社会科学或教育相关领域的高级文凭 / 副学士学位</p>	<p>Successful completion of QF Level 3 programme e.g., Yi Jin Diploma, Diploma in Foundation Studies or other acceptable alternative qualifications, including non-local qualifications obtained in or outside Hong Kong</p> <p>成功完成资历架构第三级课程, 例如毅进文凭、基础课程文凭, 或其他在香港或海外获得之可接受的同等学历</p>	<p>N/A 不适用 *1</p>
---	--	-----------------------

HKAL 香港高级程度会考

<ul style="list-style-type: none"> • Grade E in 2 A-Level subjects or equivalent AS-Level subjects; and • Grade E in Chinese Language and Culture and Use of English; and • Grade E in 5 subjects in HKCEE including Chinese Language and English Language • 2 科 A-Level 科目或同等 AS-Level 科目达 E 级; 及中国语文及文化科及英语运用科达 E 级; 及 • 香港中学会考 5 科达 E 级包括中国语文科和英国语文科 	<ul style="list-style-type: none"> • Grade E in 1 A-Level subject or 2 AS-Level subjects; and • Grade E in 5 subjects in HKCEE including Chinese Language and English Language • 1 科 A-Level 科目或 2 科 AS-Level 科目达 E 级; 及 • 香港中学会考 5 科达 E 级, 包括中国语文科和英国语文科 	<p>N/A 不适用 *1</p>
--	---	-----------------------

Mature Students 成年学生

<p>—</p>	<p>Aged 21 or above 21 岁或以上</p>	<p>Aged 20 or above 20 岁或以上</p>
----------	-------------------------------------	-------------------------------------

*1 Subject to the actual circumstance of the student, please contact the College for enquiries.

*1 根据学生实际情况而定, 如有查询请与学院联络。

^ For enquiries related to other academic qualifications, please contact the College.

^ 如有关其他学历查询, 请与学院联络。

Practicum Arrangement

实习安排

Practicum 实习安排

The Bachelor of Education (Honours) in Early Childhood Education (BEdeECE) and Higher Diploma in Early Childhood Education (HDECE) feature practicum arrangements of 27 weeks and 11 weeks respectively.

Students will undertake practicum at local and international kindergartens, child care centres and special educational institutions, with further opportunities to participate in Yew Chung Yew Wah Teachers of Tomorrow Scheme (TOT), thereby accumulating diverse and invaluable practical experience.

Meanwhile, the Bachelor of Social Sciences (Honours) in Child Development and Psychology and Associate in Child Studies and Psychology feature 2 weeks of Professional Integrated Learning (PIL) as well.

幼儿教育荣誉学士及幼儿教育高级文凭课程分别设有 27 星期及 11 星期的实习安排。

学生将先后到本地幼儿园、国际幼儿园、幼儿中心及特殊教育机构进行实习，更有机会参与独家的耀中耀华明师计划，累积多元而宝贵的实践经验。

另外，儿童发展与心理学（荣誉）社会科学学士及儿童研究与心理学副学士课程亦设有 2 星期的专业综合学习，被安排于有儿童服务工作的单位体验学习。



Field Experience & Overseas Exposure

幼教体验及海外学习活动

Field Experience and Overseas Exposure 幼教体验及海外学习活动

To become early childhood education professionals with an international perspective, students at Yew Chung College of Early Childhood Education need to engage in real-life scenario, interacting and experiencing educational philosophies and practices across diverse cultural contexts at first hand, thereby accumulating multifaceted and enriching learning experiences.

成为具备国际视野的幼儿教育专业人员，耀中幼教学院的学生需要走进真实场景，亲身接触并体验不同文化背景下的幼儿教育理念与实践方式，从中累积多元而丰富的学习经历。

Service Trip to Dumaguete, the Philippines 菲律宾杜马盖地服务之旅



“Inter-School Learning and Cultural Co-Education in Child Development” Study Tour in Shanghai and Suzhou
「跨校际学习与儿童发展中的文化共育」上海、苏州研学团



Wofoo Leaders' Network Service Trip to Thailand
和富领袖网络曼谷服务学习之旅

Partnership and Collaboration

合作伙伴

Yew Chung College of Early Childhood Education actively exchanges and collaborates with Chinese Mainland and international early childhood education academia and related institutions* to promote the development of early childhood education and seize opportunities, providing opportunities for students and teachers to learn and develop and keep pace with the times.

耀中幼教学院与内地及国际幼教学术界及相关机构* 积极交流和合作，促进幼教发展及抓紧机遇，为学生及教学人员提供机会学习及发展机会，与时俱进。



佛山暨大港澳子弟學校
AFFILIATED SCHOOL OF JNU
For Hong Kong & Macao Students, Foshan



AFFILIATED SCHOOL OF JNU
For Hong Kong & Macao Students
廣州暨大港澳子弟學校



UNIVERSITY
OF WOLLONGONG
AUSTRALIA



青島恆星科技學院
QINGDAO HENGDING UNIVERSITY OF SCIENCE AND TECHNOLOGY



東莞市海逸外國語學校
DONGGUAN LAGUNA VERONA FOREIGN LANGUAGE SCHOOL



香港中文中學聯會
The Association of Hong Kong Chinese Middle Schools



* Sequence in no particular order 排名次序不分先后

Not an exhaustive list 不能尽录

Yew Chung Yew Wah Teachers of Tomorrow Scheme (TOT) 耀中耀华明师计划

Under our unique Yew Chung Yew Wah Teachers of Tomorrow Scheme (TOT), Bachelor of Education (Honours) in Early Childhood Education and Higher Diploma in Early Childhood Education graduates can enjoy an exclusive employment opportunity at Yew Chung International Schools in Hong Kong or Chinese Mainland. Students who have excelled academically can apply, and the employment duration is typically 1 year, giving them the best start to their careers.

耀中教育机构特意设立「耀中耀华明师计划」，为幼儿教育荣誉学士及幼儿教育高级文凭毕业生提供独一无二的事业起步机会，让这些表现优秀且成功通过甄选的毕业生于香港或内地耀中、耀华幼儿园工作至少1年。



Student Support Services

学生支援服务

Chinese and English Language Learning

中英语言学习

- ▲ Intensive preparation courses
语言强化课程
- ▲ English / Chinese language support
英文 / 中文语言学盟
- ▲ One-on-one coaching
1对1辅导
- ▲ Online learning resources
网上学习资源

Community Services

社区服务

- ▲ Personal development programmes
个人发展计划

Academic Support

学业支援

- ▲ Academic workshops
学习工作坊
- ▲ One-on-one personal tutor
1对1私人导师
- ▲ One-on-one coaching
1对1辅导
- ▲ Online learning resources
网上学习资源

Faith

信仰

- ▲ On-campus prayers' room
祈祷室
- ▲ Cultural support services
文化支持服务

Mental Health

心理健康

- ▲ Mental health support courses
心理健康课程
- ▲ Workshops for success
正向研讨会

Career

就业

- ▲ Career advice and development
职业辅导和发展
- ▲ Employability skill workshops
就业技能研讨会

Student Association and Student Clubs

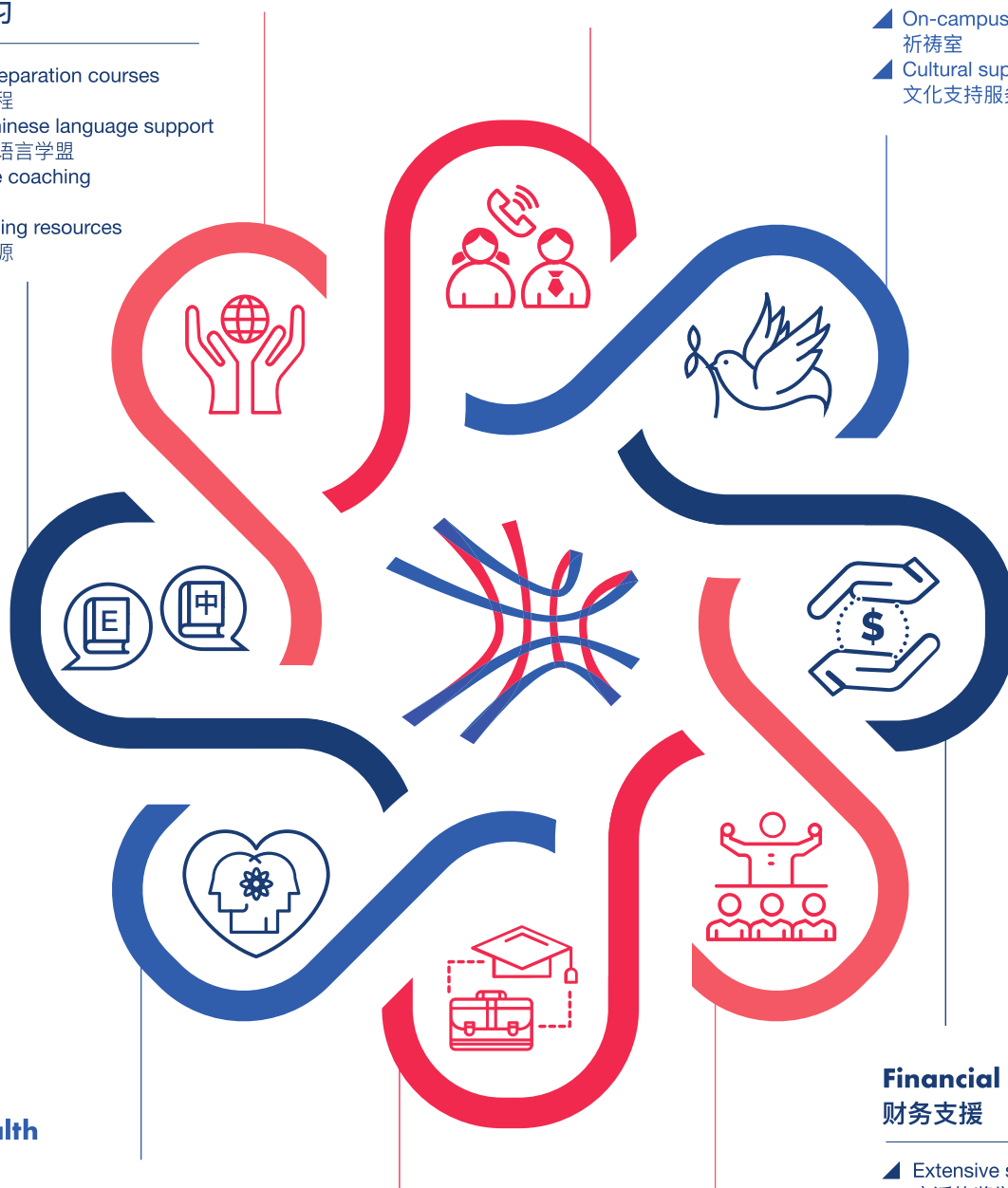
学生会和学生兴趣小组

- ▲ Leadership skill development
领导技能发展
- ▲ Peer mentoring
朋辈指导计划

Financial Support

财务支援

- ▲ Extensive scholarship schemes
广泛的奖学金计划
- ▲ Bursaries for students in need
为有需要的学生提供助学金
- ▲ Overseas exchange grants
海外交流资助



Yew Chung Approach to Early Childhood Education

耀中幼教教学法

The Twelve Values 12 项信条

The 12 Values of the Yew Chung Approach to Early Childhood Education are at the heart of our Yew Chung Yew Wah Early Childhood Education. The 12 Values approach centres on strong relationships that encourage the inner transformation of young learners as they acquire knowledge, personal skills, and character traits of a global citizen. We embed the 12 Values in the design of the indoor and outdoor learning environments, as well as in the intentional daily interactions and routines of school life.

耀中幼教教学法的 12 项信条是我们幼儿教育模式的核心，它以牢固的关系为中心，鼓励学生掌握知识、个人技能和全球公民应有的品格，作出内在转变。从室内外学习环境的设计至校园生活，12 项信条都贯穿于耀中耀华的教育之中。

12 Teachers make intentional connections to academic skills within child-led experiences
教师在儿童主导的学习经历中，有意识地将儿童的学习经验和学业技能联系起来

11 Children use language to solve both academic and social problems
儿童使用语言来解决学习和社交问题

10 Children are supported as emergent multilinguals
支持儿童自然地学习多种语言

9 Children are supported in the use of their home language
支持儿童使用家庭语言

8 Children initiate and lead activities
儿童发起并主导活动

7 Teachers and children construct learning together
教师和儿童共同建构学习

6 Children learn through an emergent curriculum
儿童通过生成课程学习

5 Teachers support relationships between children
教师要支持儿童之间建立关系

4 Strong relationships must be developed between teachers and children
教师和儿童之间必须建立稳固的关系

3 Members of the teaching team work together as equals
教学团队成员一起平等工作

2 Children are capable and can be trusted
儿童是有能力和值得信任的






1 Children are worthy of our respect and admiration
儿童是值得我们尊重和钦佩的

“Defining A Yew Chung Approach: An Ongoing Project” 《定义耀中幼儿教育法：一个正在进行的项目》

Extracted from keynote address to the Yew Chung 85th Anniversary Conference by Dr Stephanie Sanders-Smith, S.C. (2018, March 16-17)
摘自：Stephanie Sanders-Smith 博士，S.C.，香港耀中 85 周年会议主题演讲，2018 年 3 月 16-17 日耀中耀华的教育之中。

Tuition Fee (Academic Year 2026 / 27)

学费

Local Students 本地生		Year 年				Year 3 Entry 3 年级入学	
		1	2	3	4	Full-time	Part-time
	Bachelor of Education (Honours) in Early Childhood Education (BEdeECE) 幼儿教育荣誉学士	\$97,040	\$97,040	\$109,160	\$109,160	\$103,100	\$51,550*
	Bachelor of Social Sciences (Honours) in Child Development and Psychology (BSScCDP) 儿童发展与心理学 (荣誉) 社会科学学士	\$61,920 [^]	\$61,920 [^]	\$74,040 [^]	\$74,040 [^]	\$67,980 [^]	
	Higher Diploma in Early Childhood Education (HDECE) 幼儿教育高级文凭	\$92,120	\$95,220				
	Associate in Child Studies and Psychology (ADCSP) 儿童研究与心理学副学士	\$80,940	\$83,620				
	Diploma in Early Childhood Education and Care (DECEC) 幼儿教育及照顾文凭	\$71,000					

Non-Local Students 非本地生		Year 年				Year 3 Entry 3 年级入学
		1	2	3	4	Full-time
	Bachelor of Education (Honours) in Early Childhood Education (BEdeECE) 幼儿教育荣誉学士	\$117,040	\$117,040	\$129,160	\$129,160	\$123,100
	Bachelor of Social Sciences (Honours) in Child Development and Psychology (BSScCDP) 儿童发展与心理学 (荣誉) 社会科学学士	\$117,040	\$117,040	\$129,160	\$129,160	\$123,100
	Higher Diploma in Early Childhood Education (HDECE) 幼儿教育高级文凭	\$112,120	\$115,220			
	Associate in Child Studies and Psychology (ADCSP) 儿童研究与心理学副学士	\$100,940	\$103,620			
	Diploma in Early Childhood Education and Care (DECEC) 幼儿教育及照顾文凭	\$91,000				

* Applicable to BEdeECE only
只适用于幼儿教育荣誉学士

[^] NMTSS - Non-means tested Subsidy Scheme is provided by the HKSAR Government for the eligible students. These students will receive subsidy amount of HK\$35,120 per year (2026 / 27).
合资格学生可获香港特别行政区政府提供的「免入息审查资助计划」资助。该等学生每年 (2026/27) 将获得港币 35,120 元的资助金额。



YEW CHUNG COLLEGE
OF EARLY CHILDHOOD
EDUCATION
耀中幼教学院

YEW CHUNG COLLEGE OF EARLY CHILDHOOD EDUCATION 耀中幼教学院

2 Tin Wan Hill Road, Tin Wan, Aberdeen, Hong Kong
香港香港仔田湾田湾山道 2 号

City Campus 市区分校

3 To Fuk Road, Kowloon Tong
九龙塘多福道 3 号

☎ (852) 3977 9877

☎ (852) 9312 0733

☎ hkyccece

✉ admissions@yccece.edu.hk

📘 Yew Chung College of Early Childhood Education

📷 yccecehk

📺 yccecehk

🌐 YCCECE Yew Chung College of Early Childhood Education



www.yccece.edu.hk

YCCECE is a member of the Yew Chung Education Foundation (YCEF), both are registered non-profit organisations in Hong Kong
耀中幼教学院为耀中教育机构成员，两者均为香港注册非牟利团体