

Wear it with A Smile



SCAN | DESIGN | PRINT | VACUUM FORM

Clear Aligner Solutions for Orthodontists

3shape 

SHINING 3D
DENTAL

 phrozen

ASIGA®

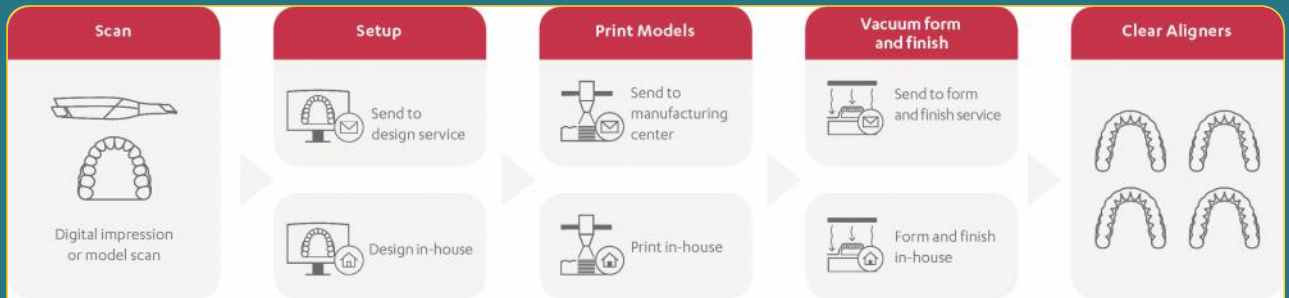
 VOXEL EDGE

 bio-art
artificial intelligence

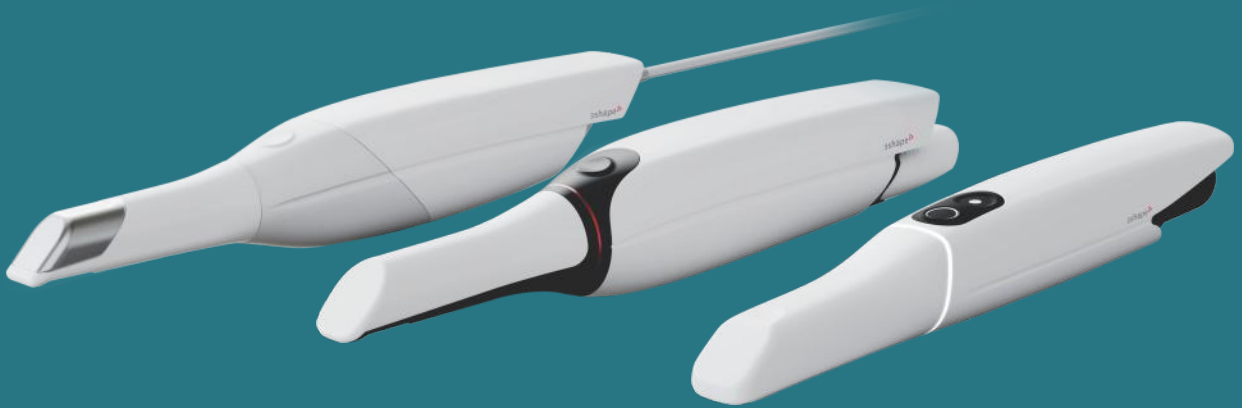
OUR VALUED PARTNER



Clear Aligner Workflow



TRIOS Intraoral Scanner



- ✦ Fast & Easy
- ✦ RealColor™ Scans
- ✦ Shade Measurement
- ✦ IOC & HD Photo
- ✦ Automatic soft tissue removal
- ✦ Accuracy 6.9 μm
- ✦ Easy view, edit, rescan
- ✦ Automatic bite registration



SHINING 3D
DENTAL

SHINING 3D Intraoral Scanner

JUST SC[🦷]N IT

- ✦ Fast speed, intuitive communication with motion sensing
- ✦ High accuracy, powerful AI process and realistic color
- ✦ Data cloud platform
- ✦ Ortho stimulation
- ✦ Model making with coordinate adjustments
- ✦ Oral health report - more informed, more engaged



Ortho Treatment Simulator - See it, Believe it, Get it!

Before Tooth Setup



After Tooth Setup



Scan Me

Show your smile to your friends & family even before starting your treatment.

E2 Red Lab Scanner

Increases productivity and texture scanning

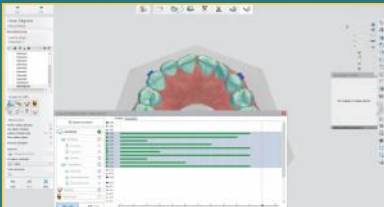


- ✦ 2 x 5 MP cameras, Blue LED Multiline
- ✦ Accuracy (ISO 12836 / implant): 10 μm /12 μm
- ✦ Scan speed (arch): 24 sec
- ✦ Scan speed (full arch impression): 72 sec
- ✦ Texture: B&W
- ✦ Scanning Strategy: Standard

Digital Orthodontics

3Shape Clear Aligner Studio

Clear Aligner Studio is the fast and easy way to bring clear aligners into your lab's production workflow. Clear Aligner Studio's guided workflow takes you through the process and steps you need to complete clear aligner cases. Choose the production



Full treatment control

Get more control over tooth movements and improved visualization with enhanced setup and staging



One integrated workflow

Quickly scan, design and prepare files for production using one integrated workflow



Increased efficiency

Save time and increase efficiency with new automated features : ID tagging, attachment placing and more.

PRINT

Send to Manufacturing Center



Orthodontics: Can deliver almost up-to-the-mark accuracy for dental models. Delivering enhanced outcomes for end customers.



MODELS

Print In-House

ASIGA[®]



Max

- ✦ Smart Positioning System Technology (SPS)
- ✦ Internal radiometer
- ✦ High power UV 385nm LED
- ✦ Small pixel and accurate pixel placement
- ✦ Precise material curing

SHINING 3D
DENTAL



AccuFab-L4K

- ✦ High Precision
- ✦ High Resolution
- ✦ High Fidelity
- ✦ Multiple Engineering Materials

 phrozen



Sonic Mighty 4K

- ✦ XY Resolution: 52 μ m
- ✦ LCD Specification: 9.3" 4K Mono LCD
- ✦ Light Source: 405nm ParaLED Matrix 2.0
- ✦ Layer Thickness: 0.01-0.30mm
- ✦ Maximum Printing Speed: 80mm/hour



VACUUM FORM

Plast Press Positive Pressure

The most compact positive pressure machine on the market, the PlastPress guarantees a higher copy fidelity and lower noise compared to vacuum machines, Practical and versatile, it allows making of molds of different materials with up to 6 mm thickness and accepts round and square plates.

It must be connected directly to a compressor at a pressure between 3 and 8 bar (43.5 to 116 psi)



- ✦ Carbon Fiber Resistance
- ✦ Double-sided cast rack
- ✦ Best cost X Benefit
- ✦ For all dental specialties
 - ✦ Orthodontics (Aligners)
 - ✦ Aesthetics (Bleaching)
 - ✦ Sports Dentistry (mouthguards)
 - ✦ General Clinic, among others
 - ✦ Prosthesis (Individual sheet, base sheet, provisory bridge)
 - ✦ Sleep Dentistry (Anti snoring & Apnea devices)
 - ✦ Bruxism & Teeth Grinding



**UNICORN
DenMart**  [®]
Behind The Best Indian Dentists

 **VOXEL EDGE**

For Further Details

 85277 00805, 97178 92258

 cadcamcrm@unicorndenmart.com



SCAN TO VISIT OUR WEBSITE

Corporate Office: 3 Local Shopping Centre, MOR Land, Near J Block
DDA Market, New Rajender Nagar, New Delhi – 110060

