

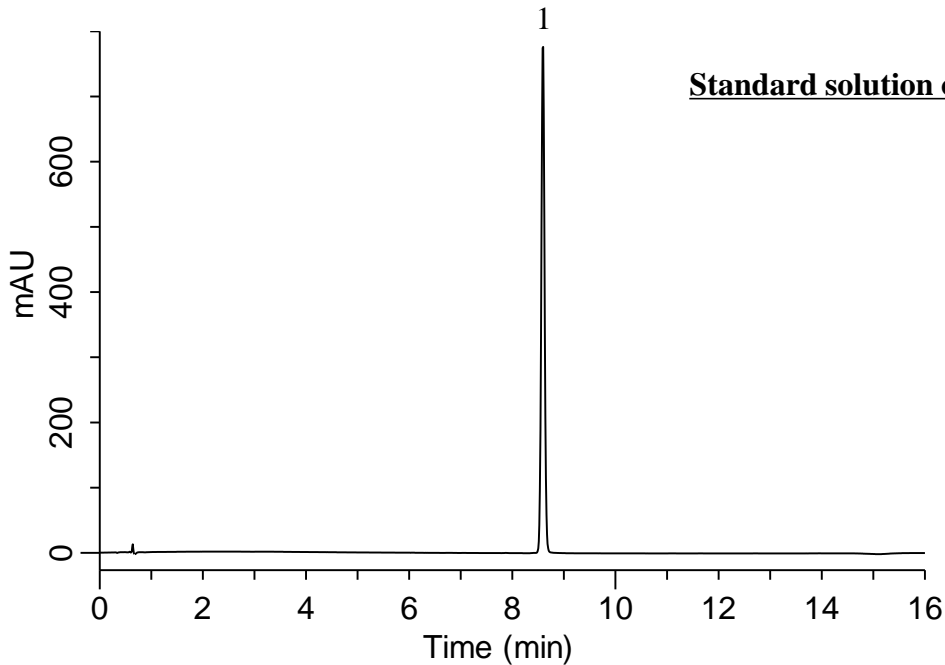
# InertSearch for LC

Inertsil Applications

## Analysis of Rivaroxaban

(Under the Condition of draft for USP, Rivaroxaban Tablets)

Data No. LB634-0871



### Conditions

**System** : GL7700 HPLC system  
**Column** : InertSustainSwift C18  
(3  $\mu$  m, 55 x 4.0 mm I.D.)  
**Column Cat. No.** : 5020-  
**Eluent** : A) CH<sub>3</sub>CN  
B) 10 mM H<sub>3</sub>PO<sub>4</sub> in H<sub>2</sub>O

Time (min)	A (vol%)	B (vol%)
0.0	8	92
13.0	51	49
13.1	8	92
16.0	8	92

**Flow rate** : 1.0 mL/min  
**Col. Temp.** : 45 °C  
**Detection** : UV 250 nm (PD7752 PDA Detector)  
**Injection Vol.** : 5  $\mu$  L  
**Sample** : Standard

### Analyte:

1. Rivaroxaban 200 mg/L

Symmetry factor : 0.97 ( $\leq$  1.5)  
RSD of the peak area (%)(n=6) : 0.06 ( $\leq$  1.5)