

BLOSSOM



Limited Edition double release

MACKENZIE THORPE

INTRODUCING A VERY *SPECIAL* NEW RELEASE 'BLOSSOM'

**FOR THOSE OF US WHO APPRECIATE SOMETHING A LITTLE BIT UNIQUE,
MACKENZIE IS THRILLED TO UNVEIL BLOSSOM!**

Inspired by his many trips to Japan, where his work is highly sought after, Blossom started life as an original piece called 'Far East', however Mackenzie longed to take the piece further', and so started the journey to create a truly original image. Mackenzie worked closely with our master printer to help achieve his vision. Hand applied golden metallic leaf, merged with contemporary printing methods, was only the beginning for this print. Pushing the boundaries even further they

decided to utilise traditional silkscreening techniques, using iridescent glazes and inks, ultimately adding great depth to this multilayered image.

Because of the hand applied technique each piece is distinctive with natural variations on every print, look closely and you can see the details across the petals and trees, it really does need to be viewed in person to fully appreciate its luminosity.

AVAILABLE IN TWO SIZES...

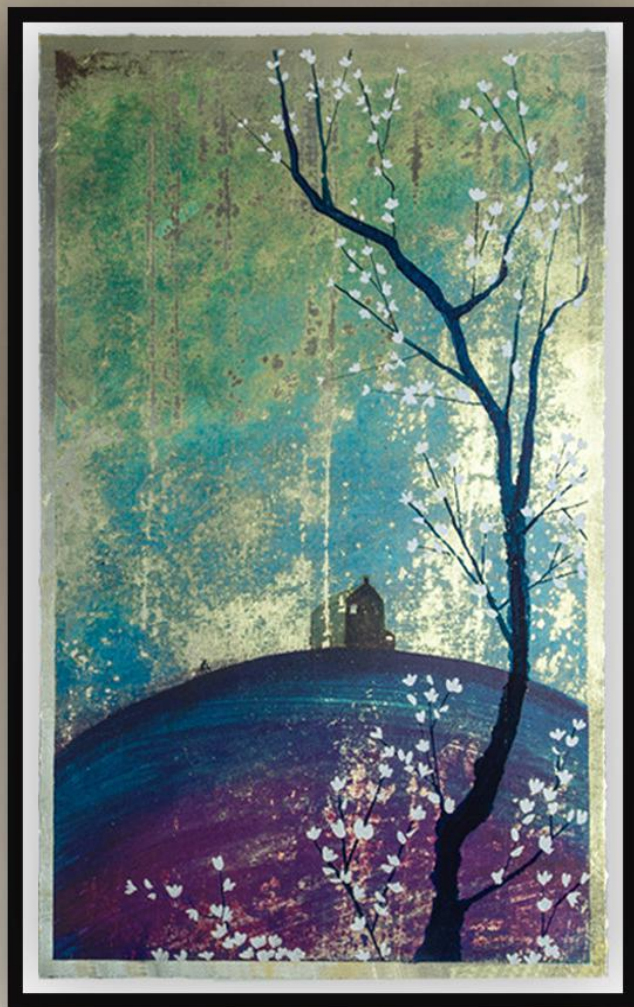
OVER-SIZED AS A STATEMENT PIECE,

Blossom oversized may be just the artwork you are looking for. With a framed size of approximately 54" tall x 34" wide, its expansive dimensions magnify its breathtaking detail. This impressive version will transform your surroundings, bringing a sense of beauty and tranquillity.

The artwork is strictly limited to an edition size of 15 adding an additional level of exclusivity, making each print a rare treasure.

PERFECTLY FORMED ELEGANCE

Bring the beauty of 'Blossom' into your home on a more intimate scale, perfectly formed and just right for that alcove, hall or stairway and at a framed size of approximately 34" tall x 24" wide.



BLOSSOM OVERSIZED

Mixed media, hand applied
golden metallic leaf
Image size | W29" x H48"
Edition 15. 3AP, 2HC

BLOSSOM

Mixed media, hand applied
golden metallic leaf
Image size | W18" x H29.75"
Edition 75. 3AP, 3HC

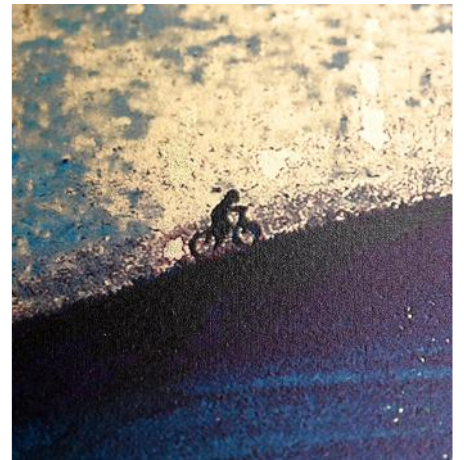
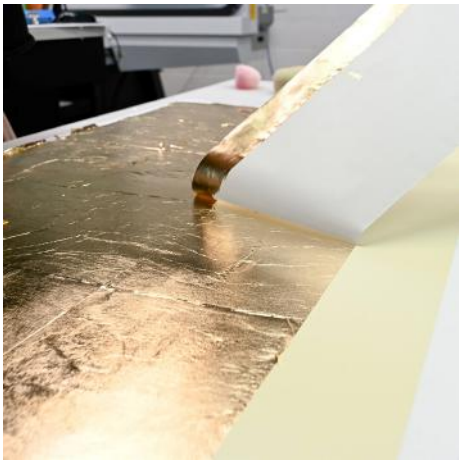
The background is a textured, abstract composition of various shades of blue and green, ranging from deep teal to light, almost white, tones. The texture appears to be that of a rough surface or a layered material. In the lower right corner, there is a dark silhouette of a person riding a bicycle, positioned on a dark, sloping surface that suggests a hill or a path. The overall mood is serene and evocative of a spring day.

*White petals dancing
into spring air
cherry blossoms bloom*

Mackenzie Thorpe



A MIXED MEDIA EDITION MADE WITH GOLDEN METALLIC
LEAF AND IRIDESCENT GLAZE...



What sets 'Blossom' apart is its gold leaf, meticulously applied by skilled artisans, adding a luminous sheen.

The image is then applied and set with an lustrous glaze and high gloss varnish across the petals and trees, finished with hand torn edges.

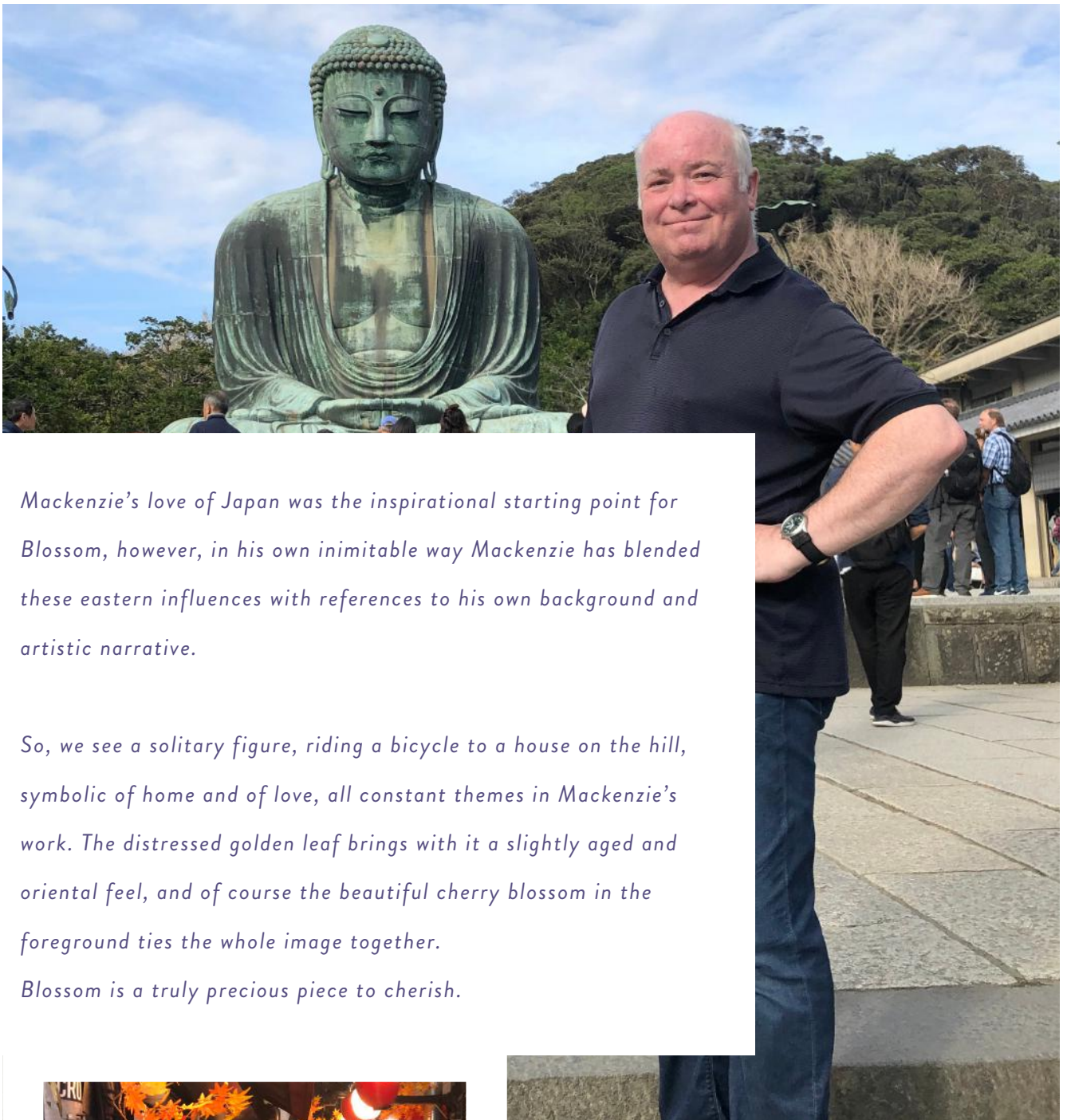
Mackenzie masterfully captures the beauty of cherry blossoms. Every petal seems to flutter delicately in the forefront with a sense of grace and serenity that is quintessentially Japanese.

WHETHER YOU OPT FOR 'BLOSSOM' OR INDULGE IN THE OVERSIZED PRINT, EACH RELEASE IS A TESTAMENT TO NATURE'S SEASONAL WONDERS AND MACKENZIE'S UNPARALLELED TALENT OF CAPTURING THEM.



CLICK OR SCAN TO SEE
BEHIND THE SCENES
MAKING OF...



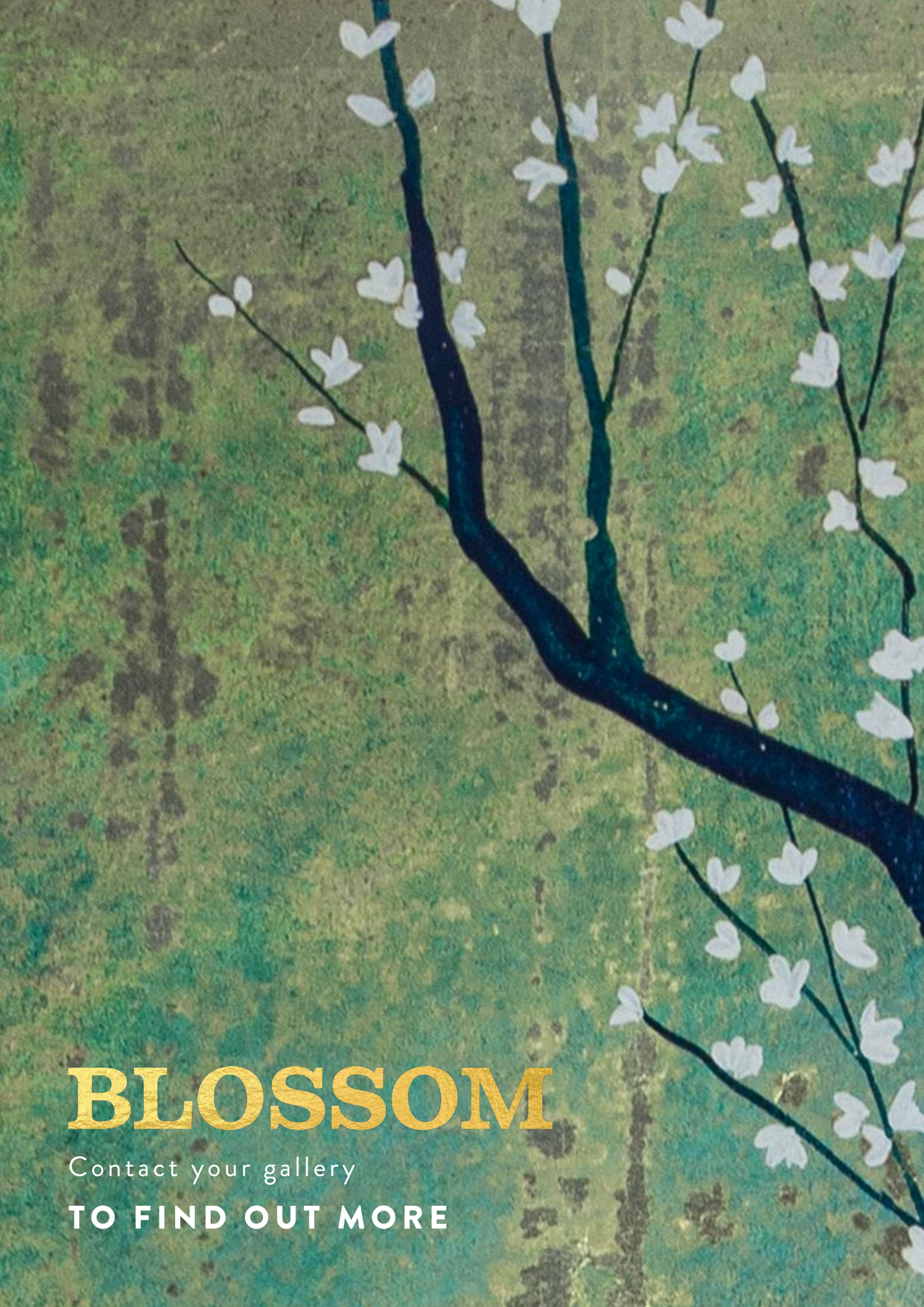


Mackenzie's love of Japan was the inspirational starting point for Blossom, however, in his own inimitable way Mackenzie has blended these eastern influences with references to his own background and artistic narrative.

So, we see a solitary figure, riding a bicycle to a house on the hill, symbolic of home and of love, all constant themes in Mackenzie's work. The distressed golden leaf brings with it a slightly aged and oriental feel, and of course the beautiful cherry blossom in the foreground ties the whole image together.

Blossom is a truly precious piece to cherish.





BLOSSOM

Contact your gallery

TO FIND OUT MORE