

SHINING 3D DENTAL

Complete 3D Dentistry Workflow
Scan | Design | Print



PAN INDIA PRESENCE

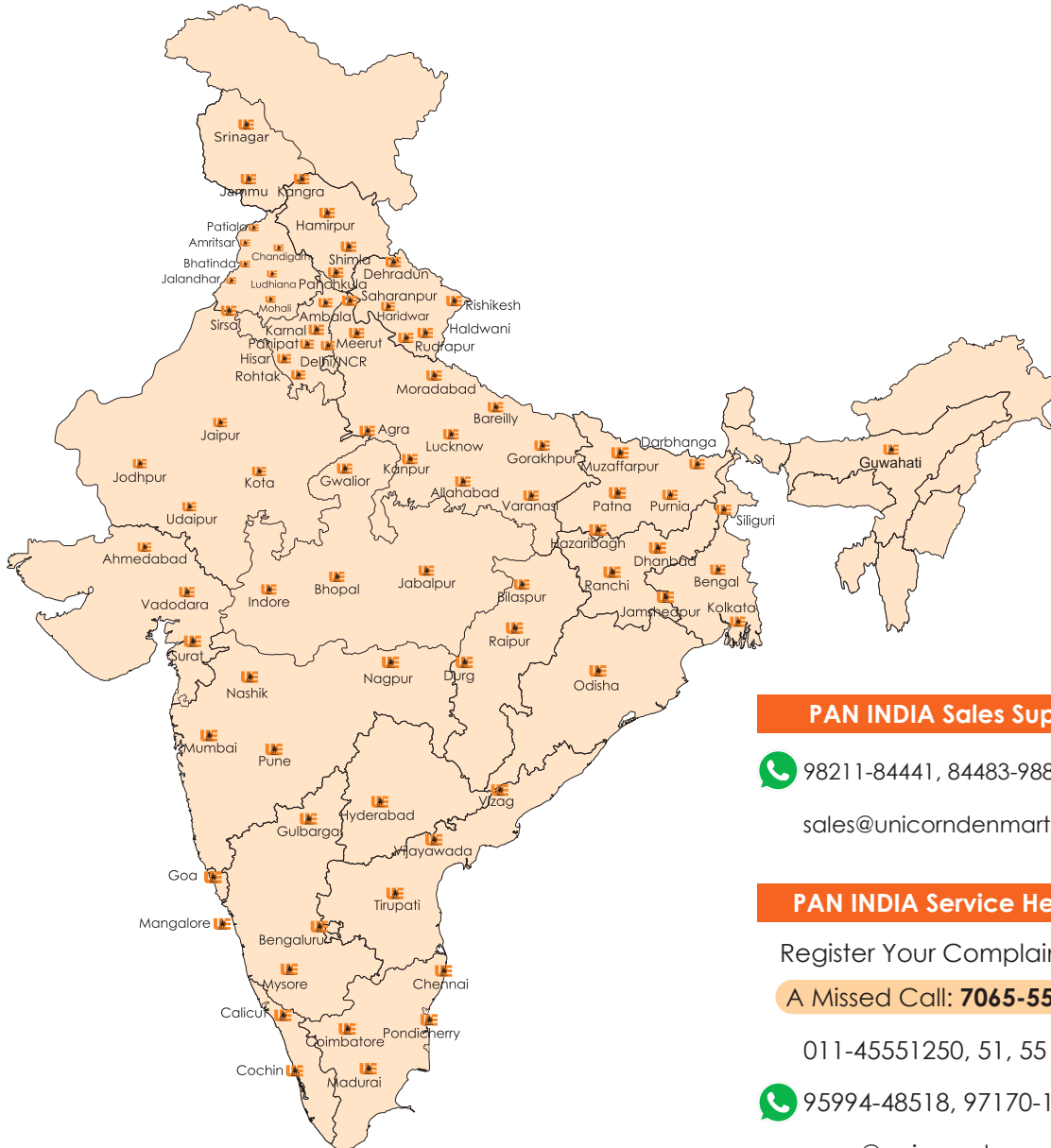
1.5 Lakh+
Satisfied
Customers

150+
Skilled Service
Engineers

100+
PAN India
Location

500+
Products Under
Service Care

32
Year
Legacy



PAN INDIA Sales Support

 98211-84441, 84483-98852

sales@unicorndenmart.com

PAN INDIA Service Helpline

Register Your Complaint with

A Missed Call: **7065-558-558**

011-45551250, 51, 55

 95994-48518, 97170-12081

care@unicorndenmart.com;
care1@unicorndenmart.com

**FOR WESTERN REGION:
(Maharashtra & Gujarat)**

022-40108770, 71

*The locations shown above are a combination of the offices of Unicorn DenMart and its distributors.

Aoralscan Elite More than an IOS

IntraOral Scanner

IPG Intraoral photogrammetry Technology: is the first of its kind in Digital Dentistry, where Intraoral scanning meets PhotoGrammetry in one device.

IPG + SCAN

**Two-in-one
System**



**High
Precision**



**High
Efficiency**



The Aoralscan Elite is the world's first device to integrate both intraoral scanning and photogrammetry into a single unit. The device functions as a standard intraoral scanner (IOS) for capturing images of dentulous cases, allowing for detailed scans of teeth and oral structures. Additionally, it serves as a photogrammetry system, which is used to accurately record the position of dental implants in edentulous cases. This dual functionality makes it versatile for both traditional dental work and advanced implant procedures. This groundbreaking innovation allows for comprehensive dental imaging and precise implant positioning, setting a new standard in dental technology.

Smooth Scanning for Edentulous Cases

IPG technology ensures a seamless scanning experience for edentulous patients. Aoralscan Elite Adopts the IPG tip, which is larger than standard, to capture every detail of the edentulous patient's oral geometry with unparalleled clarity.

124g Slim and Light

Aoralscan Elite Intraoral scanner combines a compact size and lightweight structure. The ergonomic design allows Elite to fit into a hand comfortably, enhancing usability and convenience.

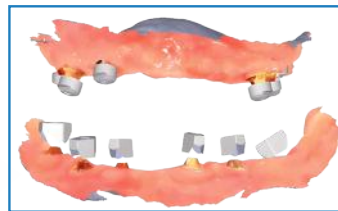
- ✦ Ultra-lightweight (124g)
- ✦ Compact dimensions (245x30x26mm)



Aoralscan Elite

2-in-1

The Aoralscan Elite is the world's first device to integrate both intraoral scanning and photogrammetry into a single unit. The device functions as a standard intraoral scanner (IOS) for capturing images of dentulous cases, allowing for detailed scans of teeth and oral structures. Additionally, it serves as a photogrammetry system, which is used to accurately record the position of dental implants in edentulous cases. This dual functionality



IPG for All-on-X



IOS for normal cases

makes it versatile for both traditional dental work and advanced implant procedures. This groundbreaking innovation allows for comprehensive dental imaging and precise implant positioning, setting a new standard in dental technology.

Smooth Scanning for Edentulous Cases

IPG technology ensures a seamless scanning experience for edentulous patients. Aoralscan Elite Adopts the IPG tip, which is larger than standard, to capture every detail of the edentulous patient's oral geometry with unparalleled clarity.



ConsulReport: A ConsulReport is a record created by a dentist after an oral examination that includes information on the type of disease, a description, and a treatment plan.

ConsulOS: The ortho-treatment process can be simulated, and patients will be able to preview the post-treatment effect in advance.

MetronTrack: With the measurement and comparison functions, it helps improve dentist-patient communication efficiency and effectiveness by tracking patients' data.

AccuDesign: Orthodontic or restoration models can be easily designed with AI for printing.

CreSplint: A smart tool that allows users to design retainers or night guards automatically with minimum operation.

CreTemp: Temporary crowns can be designed and printed in the clinic, reducing the patient's waiting time.

CreIBT: Designs an indirect bonding tray, which can be directly 3D printed to help orthodontists attach brackets faster and more accurately.

Aoralscan Elite

Lifetime Oral Health Management with SHINING 3D

Elevate your dental practice with Shining3D's cutting-edge solutions for lifelong oral health management. Experience the freedom and precision of the Aoralscan 3 Wireless, seamlessly integrated with the MetiSmile face scanner for comprehensive patient imaging. Enhance your diagnostics and treatment planning with the advanced MetronTrack comparison tool, all while ensuring secure, cloud-based data storage. Keep track of progress and collaborate effectively with your patients, setting a new standard in dental care with Shining3D.



SHINING 3D Dental Cloud

Standard and unlimited – seamless collaboration between dentists and technicians. SHINING 3D dental cloud allows for data transfer and communication between dental clinics and labs.

Technical Specifications	
Scan Field of Single Frame	IPG scanner tip: 19mm × 14mm Standard scanner tip: 16 mm × 12 mm Mini scanner tip: 12 mm × 9 mm
Scan Depth	22 mm from exit surface of tip
Scan Principle	Non-contact scanner with structured light and Intraoral photogrammetry
Dimension (L × W × H)	245 mm x 30 mm x 26 mm
Weight	124 g (without cables)
Output	STL, OBJ, PLY
Connection Port	Type-C

Aoralscan 3 Neo SHINING 3D Intraoral Scanner

Now with Oral Health Report

JUST SCAN IT



Scan for Oral Health Report

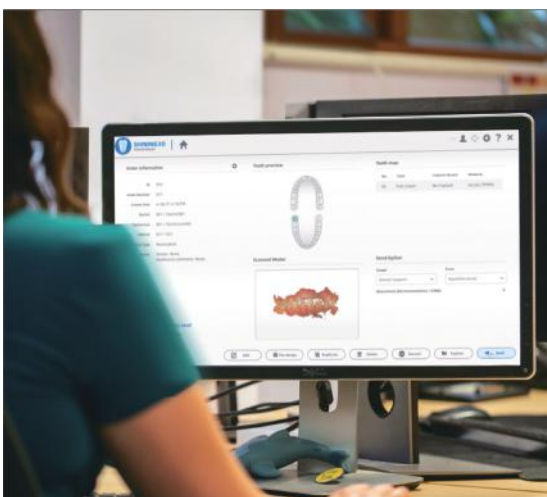
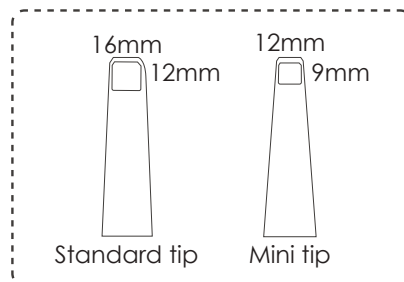
- ✦ One Button Control
- ✦ Light Weight (240g)
- ✦ Auto Anti-fogging
- ✦ Ergonomically Designed
- ✦ AI Mode
- ✦ Dynamic LED Indicator



Technical Specifications	
Scan Field	Standard scanner tip: 16 mm × 12 mm × 22 mm Mini scanner tip: 12 mm × 9 mm × 22 mm
Scan Principle	Non-contact scanner with structured light
Dimension (L × W × H)	281 mm × 33 mm × 46 mm
Weight	240 ± 10 g (without cables)
Output	STL, OBJ, PLY
Connector	USB 3.0
Power Input	12V DC/3 A

Key Features:

- ✦ Fast speed, intuitive communication with motion sensing
- ✦ High accuracy, powerful AI process and realistic color
- ✦ Data cloud platform
- ✦ Ortho stimulation
- ✦ Model making with coordinate adjustments
- ✦ Oral health report - more informed, more engaged



Cloud Platform:

SHINING 3D's cloud data platform enables data transmission, making it convenient for data transfer and communication between clinics and dental labs.

- ✦ Online 3D Data Preview
- ✦ Order Statistics Analysis
- ✦ Order Tracking System

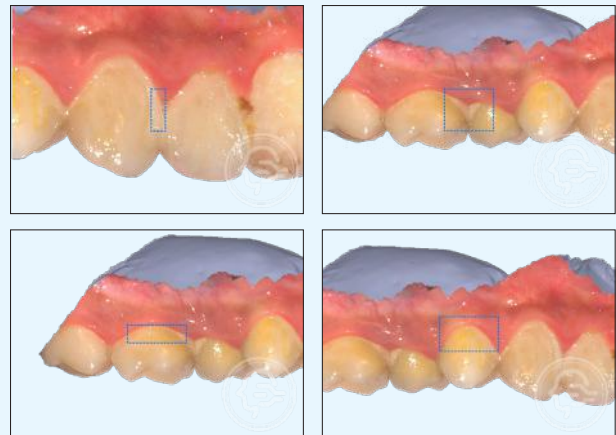
Aoralscan 3 Neo

Application:



Oral Health Report

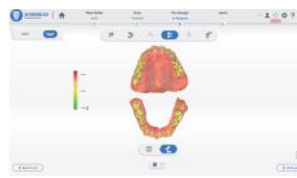
A digital report generated from an intraoral scan that uses AI to identify and display oral diseases, creating a visual treatment plan for communication with patients



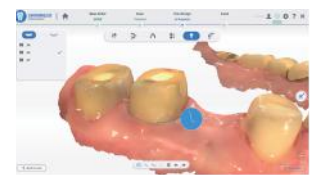
Clinical Toolkit: The clinical toolkit assists dentists to evaluate and pre-design the scanned data in their own clinic. It facilitates effective communication with dental labs to deliver quality dental work with high efficiency.



Undercut Check



Bite Check



Margin Line Auto Extraction



Tooth Marking



Coordinate Adjustment



Direct Export Into Exocad

Ortho Treatment Simulator - See it, Believe it, Get it!

Before Tooth Setup



After Tooth Setup



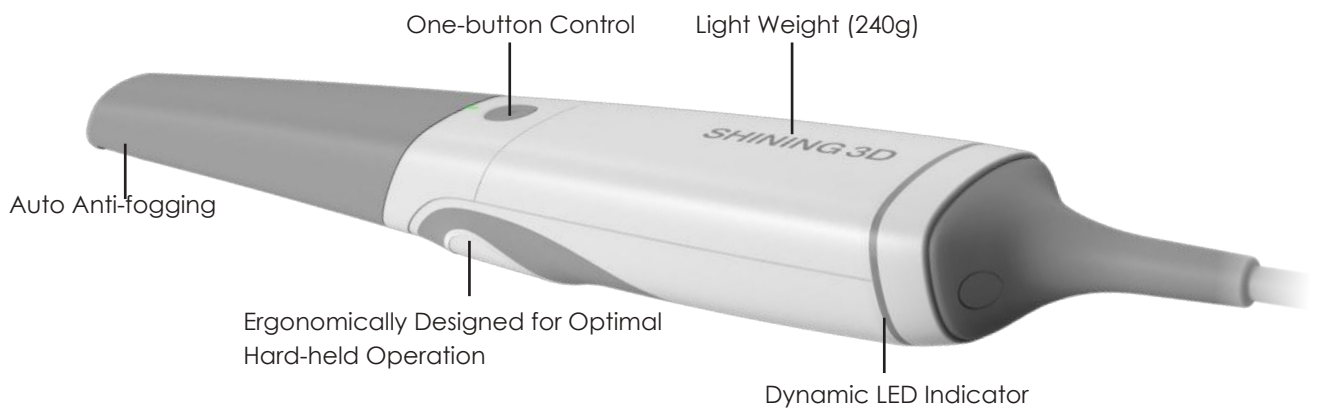
Show your smile to your friends & family even before starting your treatment.



Scan for Live Ortho Simulation

Aoralscan 3

Shining 3D presents his brand-new intraoral scanner, Aoralscan 3. It's a fast scanner with high accuracy and the latest features, which makes your experience with digital scans better. The latest AI technology makes our workflow more accurate. Now, with the new ortho simulation feature, you can encourage your ortho patient for the treatment with the pre- and post-treatment videos and photographs.



ConsulOS

Revolutionize how dentists interact with their patients: Through vivid 3D simulations, dentists can seamlessly illustrate treatment outcomes, enabling patients to visualize and understand anticipated changes.

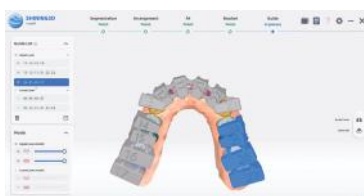


ConsulReport

Oral Health Report: Oral Health Report, is here to revolutionize dentist-patient communication and oral health management. Designed with user-friendly interaction and a simplified layout, this report enhances the effectiveness of communication between dentists and patients. Featuring multiple measurement tools, it provides comprehensive insights into oral health status.

CreSplint

Whether you need a nightguard or a retainer, CreSplint software provides you with an accurate, custom-fit design via an intuitive and user-friendly interface that requires minimal training.



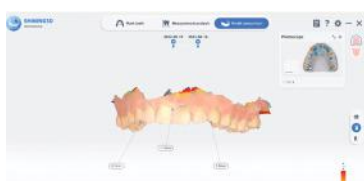
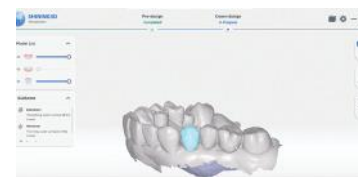
CreIBT

CreIBT makes the creation of indirect bonding trays easy. With CreIBT, orthodontists can accurately attach brackets to teeth, all while benefiting from the convenience of direct 3D printing.

Aoralscan 3

CreTemp

Temporary crowns can be designed and printed efficiently in the office, reducing patient waiting times and providing high-quality care with minimal effort.

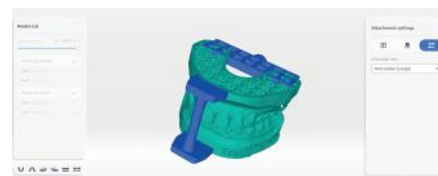


MetronTrack

With features like curve of Spee, overbite and overjet, molar relationship, Bolton ratio, crowding measurement, and Moyer analysis, these multiple measurement tools offer a comprehensive overview of the teeth. The ability to compare various intraoral data enables dentists to monitor and manage the treatment progress.

AccuDesign

AccuDesign enables users to effortlessly create printable models with a single click, streamlining operations and boosting efficiency. The improved support for ABO base significantly enhances its utility in orthodontic applications. Moreover, with the inclusion of articulators, text, and customizable settings, users have the freedom to craft personalized models.



	Aoralscan 3	Aoralscan 3 Neo	Description
Applications	Cre-Temp	NA	Lets user design and print Dental crowns and Bridges
	Splint	NA	Allows user to fabricate splints
	Cre IBT	NA	Allows user to fabricate IBT's
	Metron Track	NA	Tooth movement tracking for aligner cases
Clinical Applications	Edentulous Scanning	Clearance Check	Allows for scanning Edentulous scans with AI turned on
	Clearance Check	Margin Line Detection	Lets user check clearance
	Margin Line Detection	Undercut Detection	Lets user detect undercuts in preparation

Aoralscan Lync SHINING 3D Intraoral Scanner

LESS IS MORE

Ergonomic & Effortless

Aoralscan Lync is the latest intraoral scanner from SHINING 3D. Built on the proven Aoralscan series technology platform, it inherits trusted software and hardware while being re-engineered to focus on what truly matters - efficiency and reliability in digital impressions. It is designed to support a wide range of clinical applications, including implantology, orthodontics, and prosthodontics.



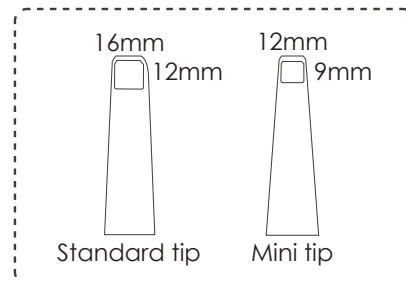
Excellent Ergonomics: Designed for comfortable handling with a pen-like grip, allowing for intuitive and relaxed scanning.



Featherlight Form: Weighing just 116g, its lightweight & compact design ensures fatigue-free operation, even during extended procedures.



Simplified Connection: A single Type-C cable enables instant plug-and-play setup, reducing clutter and enhancing usability.



Excellent Scanning Performance: Aoralscan Lync is the latest intraoral scanner from SHINING 3D. Built on the proven Aoralscan series technology platform, it inherits trusted software and hardware while being re-engineered to focus on what truly matters - efficiency and reliability in digital impressions. It is designed to support a wide range of clinical applications, including implantology, orthodontics, and prosthodontics.

Slim

116g



AI Enable: When enabled, the AI function automatically identifies and removes unwanted data points from a scan, such as soft tissue, the tongue, or the cheeks.



Extended Scanning Depth
A depth of field up to 22mm allows for easy capture of fairly deep holes and narrow gaps.



Outstanding Accuracy
Delivers high-precision, reliable scan results across diverse clinical applications.

Technical Specifications	
Scan Field	Std. scanner tip: 16 mm × 12 mm × 22 mm Small scanner tip: 12 mm × 9 mm × 22 mm
Scan Principle	Non-contact scanner with structured light
Dimension	245 mm (L) × 38 mm (W) × 33 mm (H)
Weight	116g (without cables)
Output	STL, OBJ, PLY
Connection Port	Type-C
Power Input	12V DC / 3A

Aoralscan Lync

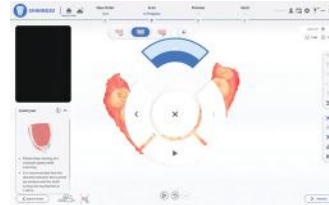
User-friendly Scanning Experience

Designed with the clinician in mind, Aoralscan Lync offers an intuitive and hygienic scanning workflow that fits effortlessly into modern practice settings.



Intuitive Interface

A clean, streamlined UI ensures a more efficient & seamless scanning process.

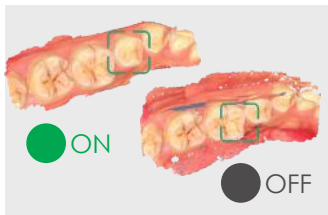


Motion Sensing

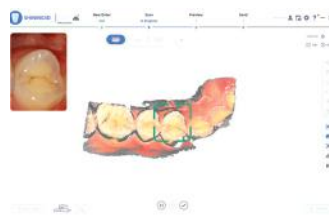
Enables contactless control during scanning, enhancing hygiene & convenience.

Smart Software for Superior Experience

Powered by advanced SHINING 3D software, Aoralscan Lync delivers a smart, streamlined scanning experience backed by powerful algorithms.

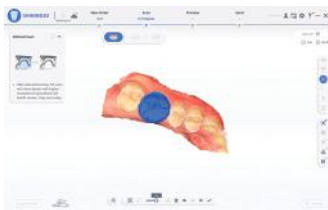


Intelligent Scan: I-driven software automatically removes soft tissue interference for clean, accurate data capture.



Scan Quality Indicator:

Highlights areas lacking data in gray, helping you identify where to rescan for optimal quality.



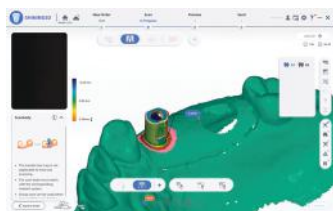
Refined Scan: Captures fine morphology and preparation details with exceptional fidelity.



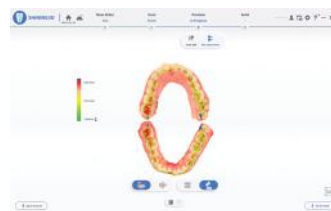
Reliable with Metal Sur-

faces: Scans effectively on metal restorations and darker shades.

Versatile Features for Clinical Excellence

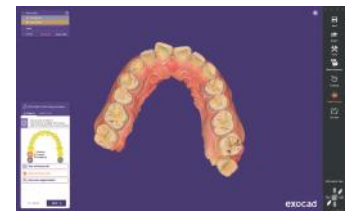


Scanbody Matching: Built-in libraries of major scanbody brands enable precise one-click alignment during scanning, minimizing rework and streamlining the implant restoration workflow.



Bite Detection

Intuitively visualizes occlusal contacts with a heat map and sectional view, helping clinicians assess bite relationships efficiently.

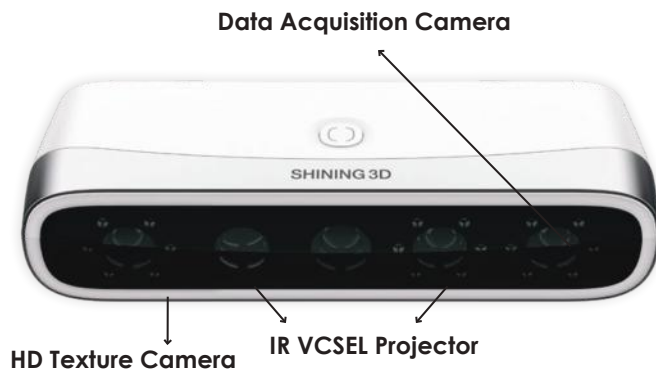


Open-format Export for Design:

Easily exports data in widely supported formats for seamless integration with CAD software like exocad, ensuring smooth and flexible prosthetic design.

MetiSmile - Dental 3D Face Scanner

Beyond Smile



Fast Scan Speed

In just 10 seconds this highly perceptive scanner can take photos of patients from multiple angles to simultaneously construct a 3D facial data.

High Accuracy

Three 1.3 MP data acquisition cameras and one 5.0 MP HD texture camera produce scan accuracy within 50µm. MetiSmile also captures elevated details of the teeth.

High-fidelity Texture

The exceptional texture camera of the MetiSmile can accurately record and display facial color that appears realistic to the patient.

ADVANCED SOFTWARE:

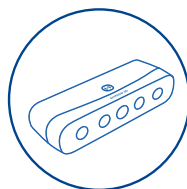
Auto Alignment Between Facial Scan Data and Intraoral Scan Data

The software will align the facial and intraoral scans which displays the patients' facial and oral information in a comprehensive way. The scans are overlapped to provide a better view and perspective for digital smile design that assists in creating more aesthetic restorations for patients.



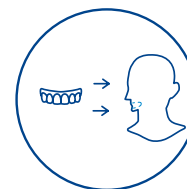
Step 1

Use Intraoral Scanner to add Intraoral data



Step 2

Use MetiSmile to Capture the Facial Data



Step 3

Import Intraoral Data to MetiSmile Software for Auto Alignment

MetiSmile - Dental 3D Face Scanner

Ortho Simulation



Facial Feature Measurement and Comparison



Mandibular Trajectory Tracking



Application

The powerful and advanced software of the MetiSmile makes this product an indispensable tool for digital dental treatment, including maxillofacial surgery, implant and prosthesis, orthodontics, medical cosmetology, etc. It will take your clinic to the next level.

- ✦ Maxillofacial Surgery
- ✦ Implant And Prosthesis
- ✦ Orthodontics
- ✦ Medical Cosmetology
- ✦ Aesthetics Restoration

Outstanding Scanning Performance

The Aoralscan Elite software is equipped with numerous powerful tools to optimize the scanning process and enhance efficiency

Good User Experience

- ✦ Handheld mode & Fixed mode
- ✦ Eye-friendly flashless scan thanks to infrared technology
- ✦ Automatic brightness adjustment ensures outstanding face texture
- ✦ Guided operation throughout the scan workflow
- ✦ Open system to export STL, OBJ and PLY
- ✦ Elegant and compact, only 800 grams



Technical Specifications

Resolution	Data Acquisition Camera: 1.3 Mega Pixel HD Texture Camera: 5.0 Mega Pixel
Accuracy	50µm
Field of View	With working distance 500mm, the FOV is 210 mm X 270 mm
Output Format	PLY, OBJ, STL
White LED color temperature	5500K
Dimension	215*50*75mm
Weight	800g
Power Supply	Input: AC100-220V~, 50/60HZ, 1.5A
Output	DC12V, 7.0V

SHINING 3D DENTAL

AccuFab-L4K

High-Precision Resin 3D Printer

A high-precision resin 3D printer that improves prototyping efficiency and shortens the new product development lifecycle.



HIGH
PRECISION



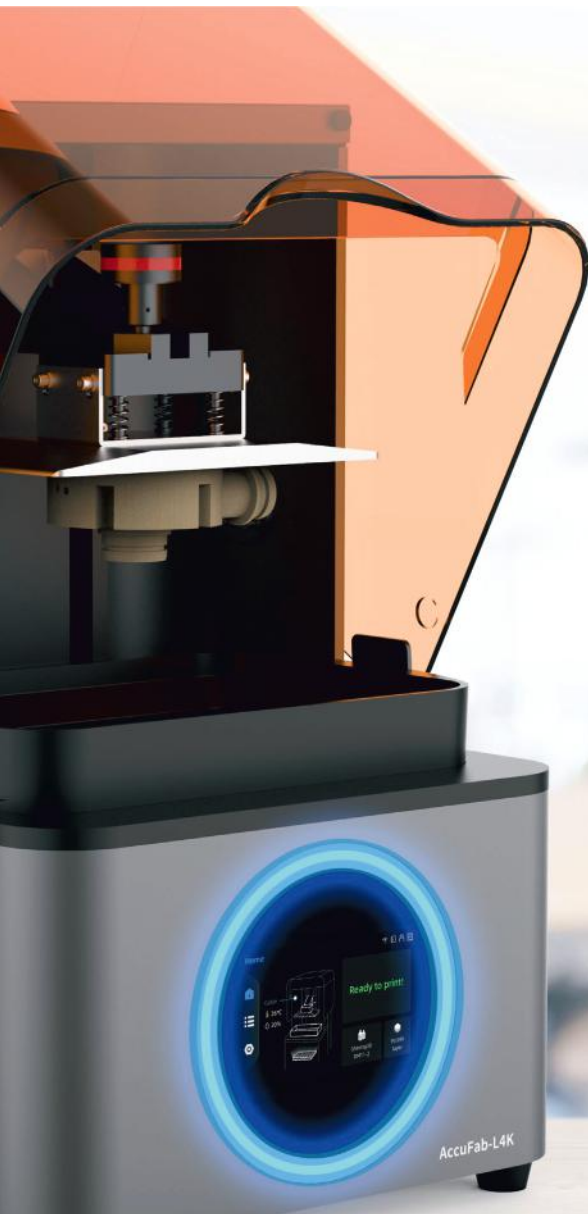
HIGH
RESOLUTION



HIGH
FIDELITY



MULTIPLE
ENGINEERING
MATERIALS



IT7
Accuracy



IT8
Accuracy



IT9
Accuracy



Technical Parameters: AccuFab-L4K 3D Printer

Optical Spec	Resolution: 3840×2400
	Pixel Size: 0.05 mm
	Wavelength: 405 nm
	Light Intensity: 3 mw/cm ²
Print Spec	Light Source: UV LED + LCD
	Print Size: 192 mm×120 mm×180 mm
	Print Speed: 10~ 50 mm/h
	Tolerance: ±0.05 mm
Environment Spec	Layer Thickness: 0.025 / 0.05 / 0.075 / 0.1 mm
	Working Temperature: 20°C ~ 30°
	Working Humidity: 30% ~ 70%

Others	Connection: Wi-Fi/Ethernet/Thumbdrive
	Weight: 19 kg
	Printer Dimensions: 360 mm×360 mm×530 mm
Available Materials	SHINING 3D Engineering Material: White Material: TR01 S1; Yellow Material: Dm12; Transparent Material: SG01; Black Material: S2; Washable Material: W1
	BASF Engineering Material: Durable Material: ST45; ST80; Rigid Material: RG35; RG50; Flexible Material: Fl60; El150
	Third Party Certified Resin: Third party resin materials approved by SHINING 3D, also can be used in AccuFab-L4K High-Precision Resin 3D Printer

SHINING DENT 3D Printing Materials

DM12 Implant Model (Geller Model)

Dental Model DM12 is the ideal choice for printing separated models for crown and bridge application. DM12 optimizes model precision through its lower elasticity and higher flexural modulus compared to the previous DM11. The hardness and mechanical properties of the cured resin allows the DM12 to resist abrasion during seating and finishing for crown and bridge cases, ensuring a perfect fit every time. The yellow color offers maximum detection of margin lines and adjacent contours, and cleanup is easy thanks to the low viscosity of the resin.

Low viscosity, high stability



DM03 Implant Model (Grey)

Dental model DM03 is the ideal choice for printing implant models and separated models for C&B applications. This material has features including high toughness, high pressure resistance, etc. This allows the best experience when using for implant models. The hardness and mechanical properties of cured resin allows DM03 to resist abrasion and tearing force during seating and finishing implant cases, ensuring perfect cases every time. The grey colour allows the perfect performance in model details. DM03 is recommended to place at room temperature 23 ± 2 with humidity $< 70\%$

Accuracy of printed curing model:

Within 10 days >90% | Within 15 days >85%

SG01 Surgical Guide

Surgical Guide SG01 is a clear and biocompatible resin intended for printing dental surgical guides. It is certified by FDA as Class I medical instrument and meets ISO 10993 standards, making it ideal for customized, non-implantable use with body contact limited to 24 hours. SG01 is a rigid polymer with minimal flex, which allows it to maintain its form during dental surgeries.

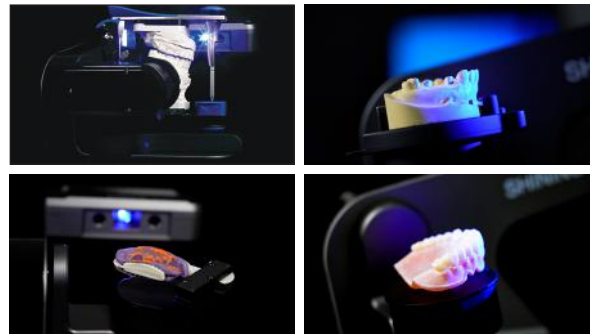
Biocompatible, transparent



AutoScan-DS-EX Pro (H)

Embrace The 5.0 MP Era

AutoScan-DS-EX Pro(H), developed and manufactured by SHINING 3D, is a 3D dental scanner with powerful functions for multiple applications covering scans of impressions, plaster models, articulators, implant abutments, etc. Its high-resolution cameras, advanced algorithms, and user-friendly interface bring you with superior data quality with optimal experience.



Advanced Desktop Scanner



Ultra-high Accuracy: Scan accuracy $\leq 8 \mu\text{m}$ assures reliable scan result, satisfying the requirement of various applications in dental industry completely. abutments, etc. Its high-resolution cameras, advanced algorithms, and user-friendly interface bring you with superior data quality with optimal experience.



Unparalleled Details:
Equipped with dual 5.0 MP high resolution cameras, AutoScan-DS-EX Pro(H) can capture every detail of the components meticulously.



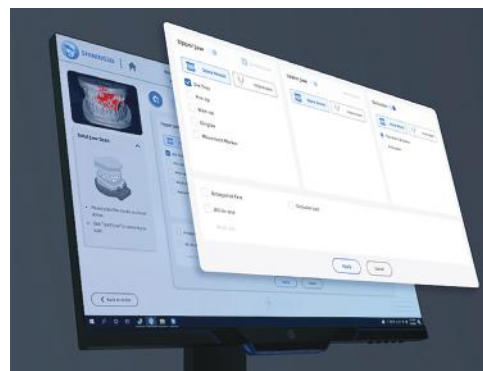
Fast Speed: Bite scan: 7s
Upper/Lower jaw scan: 14s
1~4 dies scan: 18s
5~8 dies scan: 30s
Impression scan: 66s

AutoScan-DS-EX Pro (H)

Flexible Workflow: Set up your own workflow as you prefer, increasing work efficiency like never before, all-in-one and triple tray are available to get complete scan data with less steps.

Backstage Data Processing: Scan and backstage data processing can be carried out simultaneously, making the whole process more efficient.

Versatile Scan Modes: The new software associated with AutoScan-DS-EX Pro(H) can support versatile scan modes, including Multi Path Scan, High Quality Scan, AI Scan, Texture Scan, HDR Mode Scan, Reduce High Brightness Scan, etc.



Implant Abutment



Implant Bridge



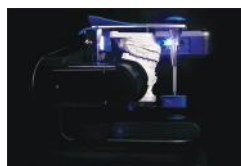
Scanbody



Texture



Model



Articulator



Full Denture



Impression



Post and Core

AutoScan-DS-EX Pro (H) Specifications

Camera Resolution	2*5.0 MP
Accuracy	≤ 8 μm
Scan Time	Bite scan: 7s; Upper/Lower jaw scan: 14s; 1~4 dies scan: 18s; 5~8 dies scan: 30s; Impression scan: 66s
Articulator Scan	Support articulator transfer
Output Format	STL, PLY, OBJ
Light Source	Blue Light
Dimension	385*260*270 mm
Weight	5.0 Kg
Interface	USB 3.0
Power Supply	DC 24V

AutoScan-DS-EX Pro (C)

Embrace The 2.4 MP Era



New Upgrades, More Distinguished

AutoScan-DS-EX Pro (C) Specifications

Camera Resolution	2.4 MP
Scan Time	8 s for bite scan; 12 s for upper / lower jaw scan; 13 s for 1-4 dies scan; 21 s for 5-8 dies scan; 58 s for impression scan
Output Format	STL / OBJ / PLY
Light Source	Blue light
Dimensions	260x270x420 mm
Weight	5 kg
Interface	USB 3.0
Power Supply	Dc24 V

AutoScan-DS-EX Pro (C)

All-IN-ONE SCAN

This new all-in-one scan method allows scan of quadrant models and dies at the same time, which largely simplifies the scan process and improve the scan efficiency by almost 50%

Conventional
4 Steps



1. Bite



2. Upper



3. Lower



4. Die

All-in-one
2 Steps



1. Bite



2. All-in-one

EVEN FASTER SCAN SPEED

With increased scan speed, a single jaw scan can be finished in 12 seconds. The entire process of a separate-die order can be completed within 2 minutes and a non-separated-die order within 2.5 minutes.



Bite
8s



1-8 Dies
13-21s



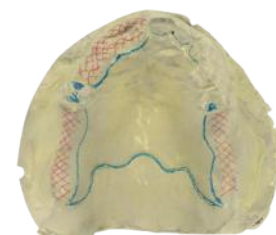
Single Jaw
12s



Impression
58s

TEXTURE SCAN

Clearly captures the textures and marks on the plaster model, assisting technicians to finish the digital partial framework design.






WHERE TRUST COMES FIRST



Warranty Ke Saath Bhi
Warranty Ke Baad Bhi

For any Sales & Support

 9821184441, 8448398852

 sales@unicorndenmart.com

Customer Care

Register Your Complaint with A Missed Call: **7065-558-558**

 011-45551250, 51, 55  9717012081, 95994 48518

 care@unicorndenmart.com | care1@unicorndenmart.com

Connect With



Unicorn DenMart

* Accessories shown may not be a part of standard equipment. Specifications are subject to change without notice.

Ver 5/2026



Corporate Office: 3 Local Shopping Centre, MOR Land, Near J Block DDA Market,
New Rajender Nagar, New Delhi – 110060

