



2023-24

JAMES
&
WHITNEY
Co.

March 24, 2024



**Boston Bruins
Foundation Charities**

**Celebrating 55 Years of
Boston Bruins Tradition on Ice**



OFFICIAL

Chicken Sandwich

OF THE

Boston Bruins Alumni Association


Greater Boston Area & New Hampshire

JAMES
&
WHITNEY
Co.

PROUD TO BE THE OFFICIAL
ROOFING + EXTERIORS
PARTNER OF THE
BOSTON BRUINS ALUMNI
ASSOCIATION!

SERVING
MAINE &
NEW
HAMPSHIRE!



ROOFING
SIDING
DECKING +
MORE!



WELCOME BAUER HOCKEY, OFFICIAL EQUIPMENT SUPPLIER





Boston Bruins Alumni Roster

	Coach	Tom Songin	Boston College; 3 years with Boston Bruins
#37	Goalie	Keith Segee	Bruins back-up goalie
#1	Forward	Reggie Lemelin	15 years in NHL; 6 years with Boston Bruins
#10	Forward	Kenny Hodge	4 years in NHL; 2 years with Boston Bruins
#11	Forward	Joe Mullen	17 NHL seasons; 1 with Boston Bruins
#13	Forward	Ken Linseman	14 NHL seasons; 5 ½ seasons with Boston Bruins
#18	Defense	Rich Brennan	6 NHL seasons; 1 with Boston Bruins
#20	Forward	Bob Sweeney	10 years in NHL; 6 with Boston Bruins
#21	Defense	Frank Simonetti	4 years with Boston Bruins
#31	Forward	John Carter	8 years in NHL; 6 with Boston Bruins
#32	Forward	Bruce Crowder	4 years in NHL; 3 with Boston Bruins
#34	Defense	Dave Shaw	16 NHL seasons; 3 with Boston Bruins
#38	Defense	Bobby Allen	3 years in NHL; 2 with Boston Bruins
#41	Forward	Guy Larose	6 NHL seasons; 1 with Boston Bruins
#41	Defense	Al Pedersen	5 seasons with Boston Bruins
#43	Forward	Jean-Yves Roy	4 NHL seasons; 2 with Boston Bruins
#48	Forward	Graeme Townshend	5 years in NHL; 2 with Boston Bruins
#70	Defense	Patrick Mullen	Son of Joe Mullen

BOSTON BRUINS ALUMNI TEAM
2023-24 season



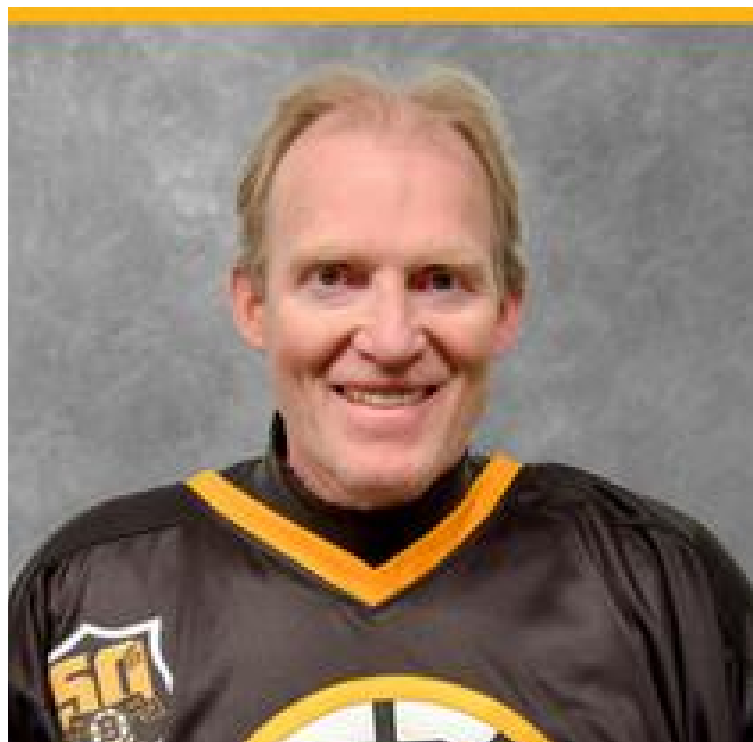
JOHN CARTER
1985-1991



GRAEME TOWNSHEND
1989-1991



BOB SWEENEY
1986-1992



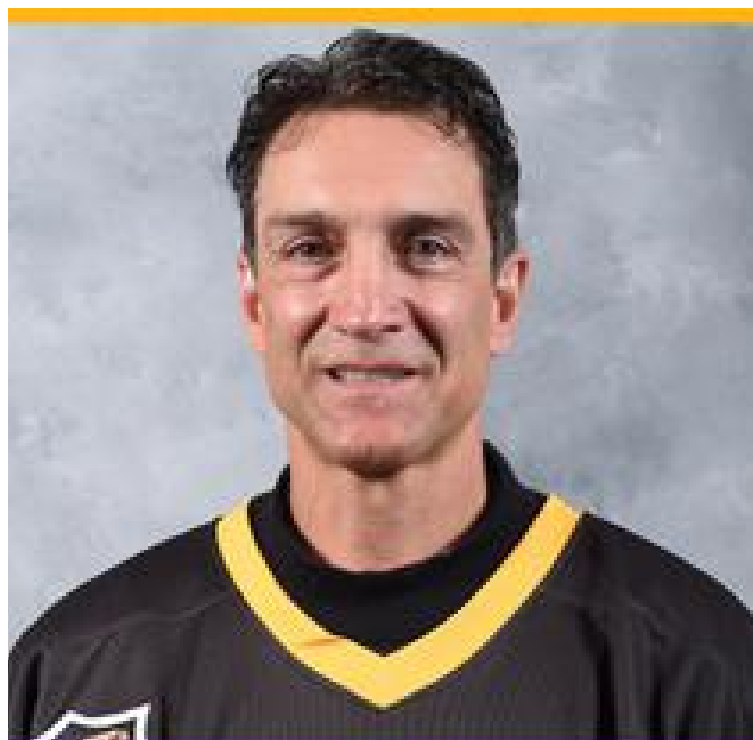
ALLEN PEDERSON
1983-1991

Boston Bruins Tradition on Ice

BOSTON BRUINS ALUMNI TEAM
2023-24 season



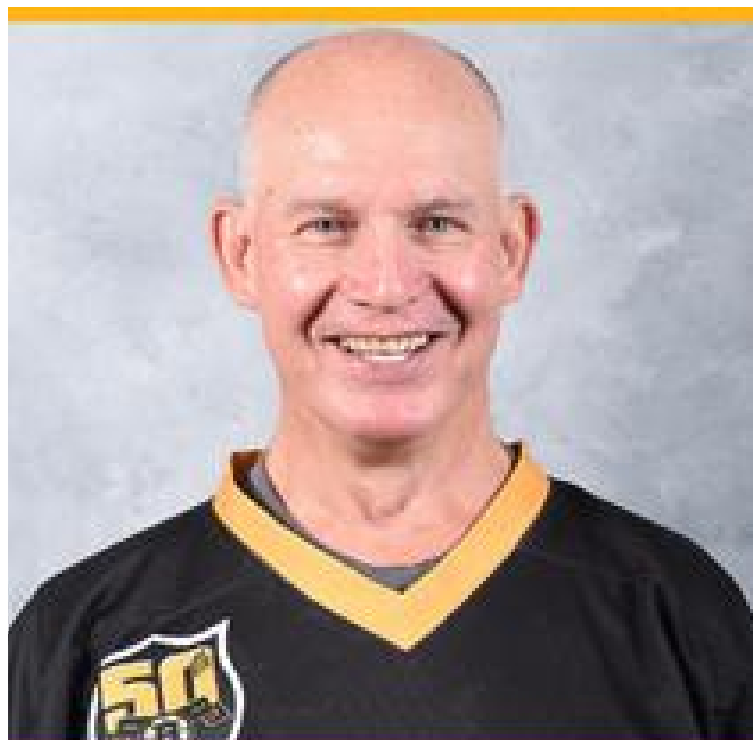
DAVE SHAW
1992-1995



JEAN YVES-ROY
1996-1998



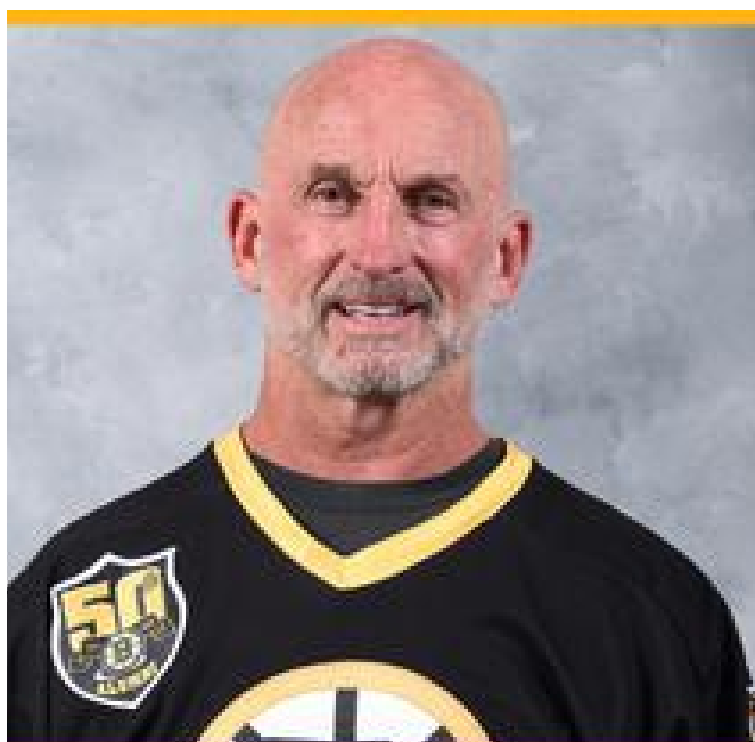
RICHIE BRENNAN
2002-2003



JOEY MULLEN
1995-1996

Boston Bruins Tradition on Ice

BOSTON BRUINS ALUMNI TEAM
2023-24 season



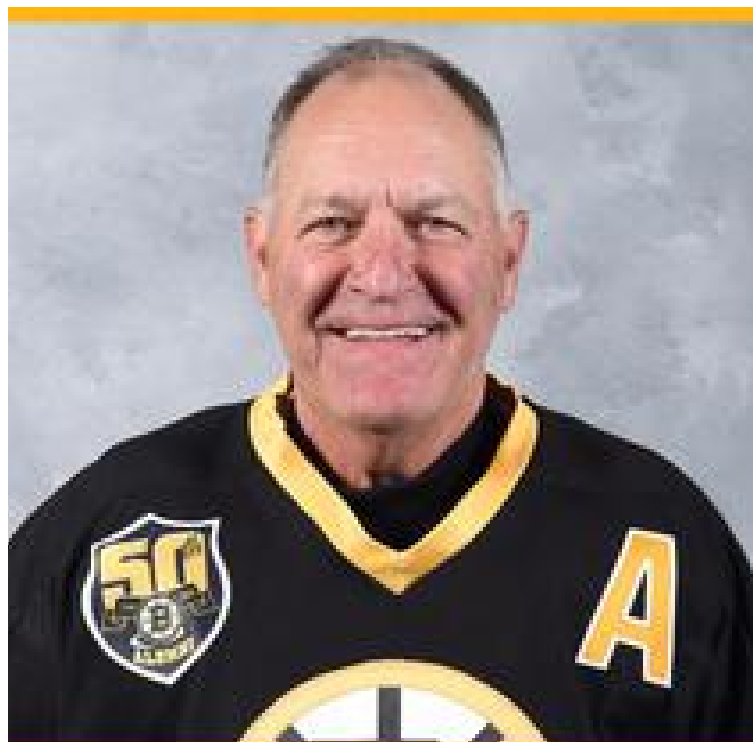
KEN LINSEMAN
1984-1990



KEN HODGE, JR
1990-1992



FRANK SIMONETTI
1984-1988



REJEAN LEMELIN
1987-1993

Boston Bruins Tradition on Ice

BOSTON BRUINS ALUMNI TEAM
2023-24 season



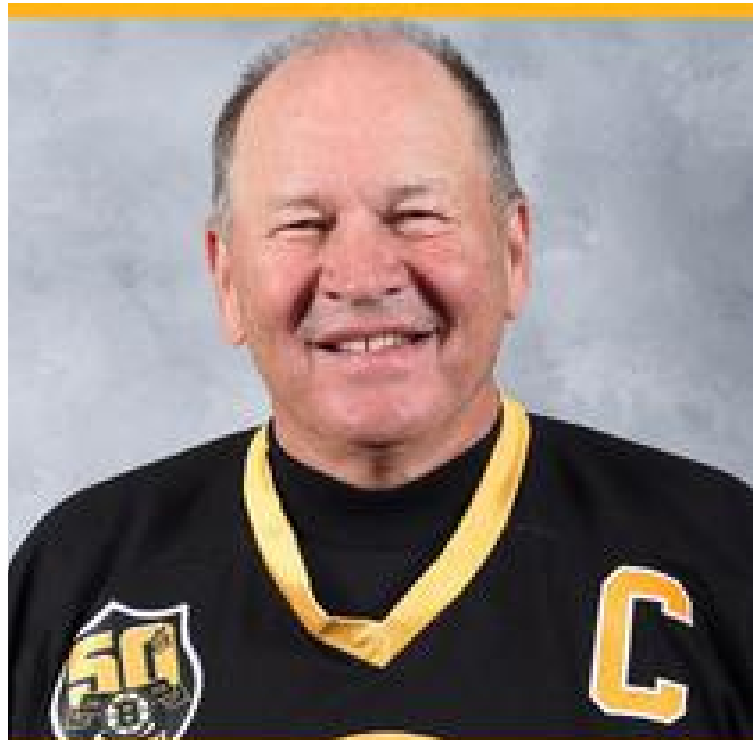
GUY LAROSE
1994-1995



BRUCE CROWDER
1981-1984



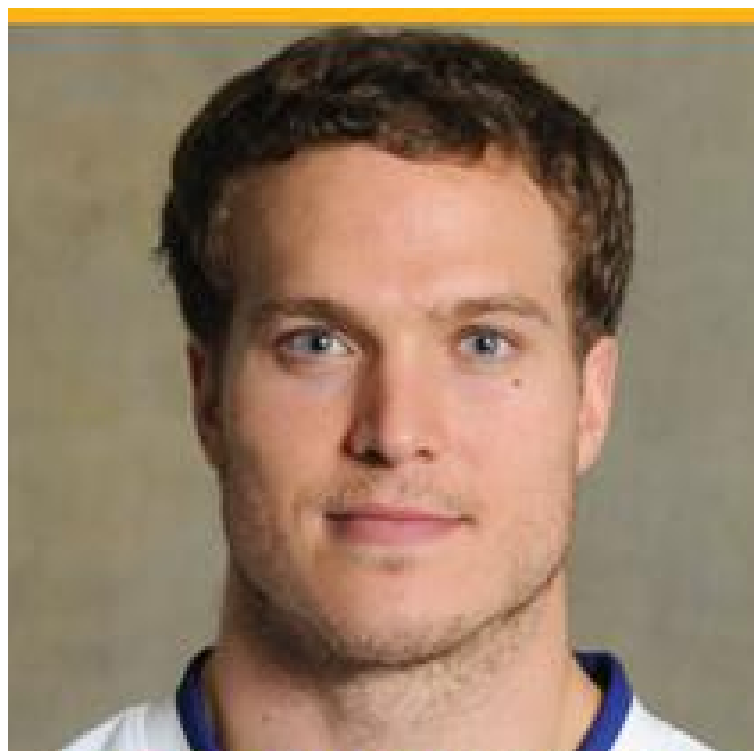
BOBBY ALLEN
2006-2008



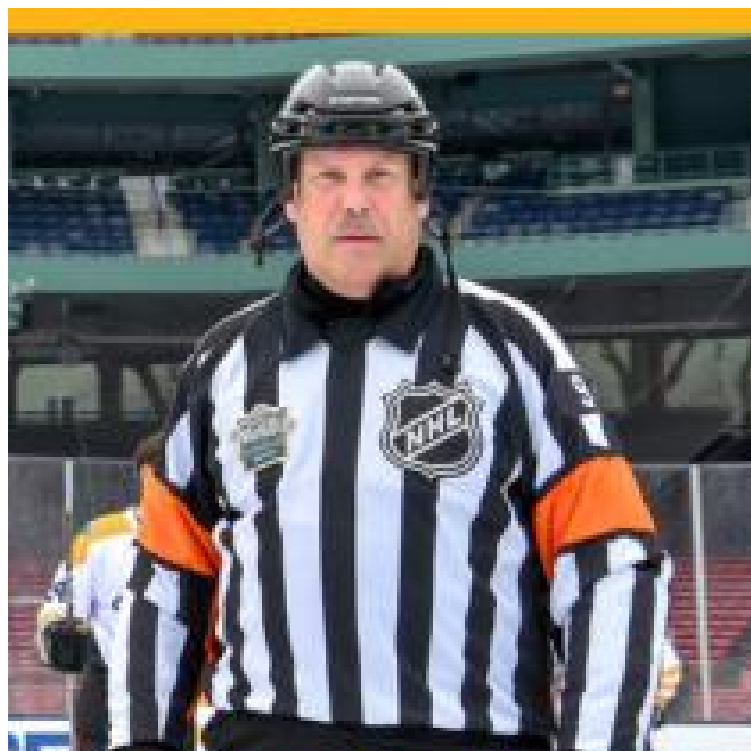
TOM SONGIN
1978-1981

Boston Bruins Tradition on Ice

BOSTON BRUINS ALUMNI TEAM
2023-24 season



PATRICK MULLEN
Honorary Alumni



Don Garcia
Referee



KEITH SEGEE
HONORARY ALUMNI



Doug Smith
Referee

Boston Bruins Tradition on Ice

BOSTON BRUINS ALUMNI TEAM 2023-2024 season



Kevin P. Foley
Proud Sponsor and Counsel of the
Boston Bruins Alumni!

Cam Foley
Bruins 2034

Attorney Kevin P. Foley, PC
246 High Street
Newburyport, MA 01950
(978) 462-7076
kevin@kevinfoleypc.com

Karen Wonoski
Bruins Alumni Coordinator

Bob Cormier
Alumni Hockey Operations

John Horrigan
Alumni Game Announcer

Frank Walker
Alumni Trainer/Equipment MGR

Mike Foley
Alumni Trainer/Equipment MGR

Don Garcia
Alumni Game Referee

Maria Coan
Alumni Memorabilia Sales

Alex Bezanson
Alumni Trainer/Equipment MGR

Mark Willand
Media Director

Steve Babineau
Bruins Photographer

Craig Michaud
Alumni Photographer

Ned Costantino
Alumni Photographer

**Watch Today's Game on April 30
at BostonBruinsAlumni.com**

2023-24 Schedule

Saturday, November 4, 2023 at 4:00pm
 Saturday, November 11, 2023 at 2:00pm
 Saturday, November 18, 2023 at 1:00pm
 Sunday, November 19, 2023 at 2:00pm

DCU Center, Worcester, MA
 Warrior Ice Arena, Brighton, MA
 NESG, Marlborough, MA
 Warrior Ice Arena, Brighton, MA

Why Me & Sherry's House
 Team Edna
 Wes Tuttle Foundation
 Mass. Down Syndrome Congress

Saturday, December 2, 2023 at 4:00pm
 Sunday, December 17, 2023 at 2:00pm

Warrior Ice Arena, Brighton, MA
 Warrior Ice Arena, Brighton, MA

Warrior for Life Fund
 Matt Light Foundation

Saturday, January 6, 2024 at 4:00pm
 Saturday, January 13, 2024 at 4:00pm
 Sunday, January 14, 2024 at 4:00pm
 Saturday, January 20, 2024 at 2:00pm
 Sunday, January 21, 2024 at 2:30pm
 Friday, January 26, 2024 at 7:00pm

Pop Whalen Arena, Wolfeboro, NH
 Berkshire School, Sheffield, MA
 Tsongas Arena, Lowell, MA
 Warrior Ice Arena, Brighton, MA
 Skate 3, Tyngsboro, MA
 Wells Fargo Center, Philadelphia, PA

Friends of Pop Whalen
 Berkshire County Special Rec. Team/WFL
 Bridge Club of Greater Lowell
 Warrior for Life Fund
 Tom Smith Foundation
 50th Anniv. of Flyers 1974 Stanley Cup

Saturday, February 3, 2024 at 1:00pm
 Sunday, February 4, 2024 at 3:00pm
 Saturday, February 17, 2024 at 3:00pm
 Saturday, February 24, 2024 at 1:00pm
 Sunday, February 25, 2024 at 2:30pm

The Bog, Kingston, MA
 Everett Arena, Concord, NH
 Walter Brown Arena, Boston, MA
 Amelia Park Arena, Westfield, MA
 Asiaf Arena, Brockton, MA

Great Blizzard Special Hockey
 Stephen Cmar ROTC Scholarship Fund
 Salesforce/Just Keep Livin
 Amelia Park Arena/Westfield Police Dept.
 Brockton Fire Department

Saturday, March 2, 2024 at 2:00pm
 Sunday, March 10, 2024 at 2:00am
 Saturday, March 16, 2024 at 2:00pm
 Saturday, March 23, 2024 at 2:00pm
 Sunday, March 24, 2024 at 2:00pm
 Saturday, March 30, 2024 at 1:00pm

The Colisée, Lewiston, ME
 Rinks at Exeter, Exeter, NH
 Dover Ice Arena, Dover, NH
 Warrior Ice Arena, Brighton, MA
 Larsen Rink, Winthrop, MA
 Veteran's Memorial Rink, Haverhill, MA

Lewiston Police Department
 Spartans for Life
 My Breast Cancer Support
 Moments that Matter
 Boston Bruins Foundation
 Haverhill Police Relief Association

Sunday, April 7, 2024 at 2:00pm
 Saturday, April 13, 2024 at 3:00pm
 Sunday, April 14, 2024 at 1:00pm
 Saturday, April 20, 2024 at 2:00pm
 Sunday, April 28, 2024 at 1:00pm

Warrior Ice Arena, Brighton, MA
 Quincy Ice Arena, Quincy, MA
 Danbury Ice Arena, Danbury, CT
 Warrior Ice Arena, Brighton, MA
 Benny Magiera Mem. Rink W. Warwick, RI

Dana Farber Cancer Institute
 Rucks2Pucks
 Danbury Girls Hockey
 Stanley Keg Games
 Central Rhode Island Knights Hockey

IT'S TIME FOR
 YOUR BRAND TO
 TAKE CENTER ICE.

DISCOVER THE PERFECT LOCATION FOR YOUR
 BUSINESS WITH OVERTIME REAL ESTATE.



OVERTIME
 REAL ESTATE



PAT LEAHY

PAT@OVERTIMERE.COM

@OVERTIMERELLC



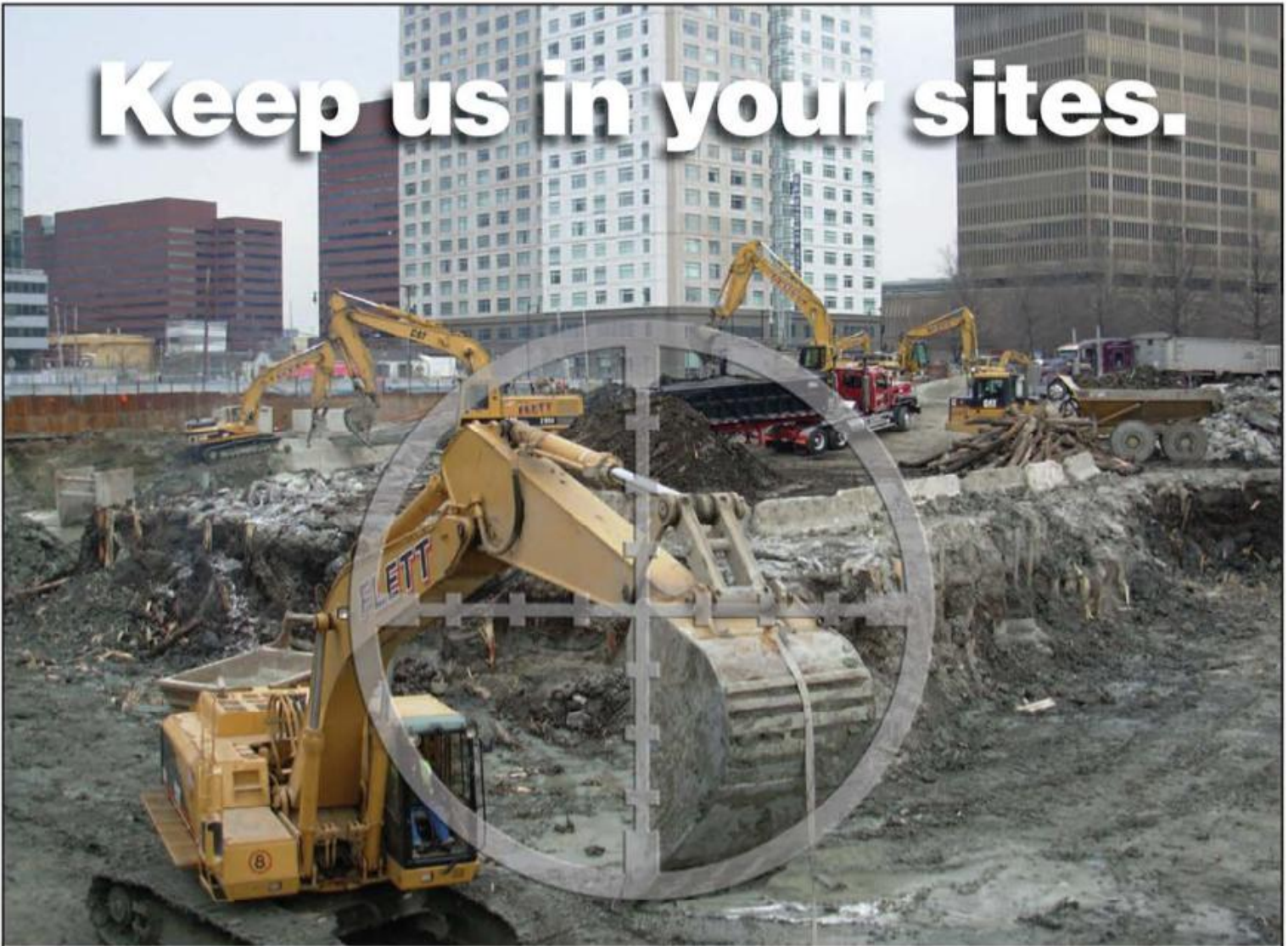
TD GARDEN IS PROUD TO SUPPORT THE
BOSTON BRUINS ALUMNI ASSOCIATION.



From your friends at TD Garden, proud home of the Boston Bruins.

TD GARDEN

Keep us in your sites.



Proud sponsor of the Boston Bruins: past, present and future

- Site Development
- Soil Remediation
- Earthwork
- Utility Work
- Site Improvements
- Equipment Rental

JAMES W.
FLETT
CO. INC.

EXCAVATING CONTRACTORS

800 Pleasant Street, Belmont, MA 02478 · 617-484-8500 · Fax 617-484-1279 · www.jwflett.com

YOUR TEAM, YOUR CHOICE.

We believe in building winning partnerships to protect your team for tomorrow. Whether your team is your family, business, or your employees, you can depend on Cross Insurance for the best insurance solutions.



COMMERCIAL INSURANCE PERSONAL INSURANCE EMPLOYEE BENEFITS SURETY

OFFICIAL INSURANCE BROKER



www.crossagency.com



The Dolben Company is a proud supporter of the Boston Bruins Alumni Association!

We are a dynamic real estate firm, with a family inspired culture, developing and managing best-in-class multifamily communities throughout the New England, Mid-Atlantic and Southwest Florida markets since 1929.

LET'S GO BRUINS!



FOUNDING MEMBER



STRATEGIC PAYMENT SYSTEMS





TRESCA

**Delicious Italian food
and traditional
hospitality in
Boston's North End.**

233 Hanover Street
Boston, MA 02113
p: 617-742-8240
f: 617-742-8246

info@trescanorthend.com



**94 HIGH ST. (RTE. 35) ·
DANVERS, MA 01923
TUES - FRI 9AM - 8PM ·
SAT 9AM - 5PM
· 978-777-7278
(978-77-SPA-78)**

www.maisonesthetique.net





AAM 

Real Estate Investment & Management

David R. Masse

CEO/ Founder

Ⓜ **WARRIOR ICE ARENA** Ⓜ



"Official Practice Arena"



"Official Home Arena"





ATTENTION!

- › Carpenters
- › Electricians
- › Plumbers
- › HVAC
- › Landscapers
- › Other Contractors

Want to save money on your insurance? Talk to us.
Get a free 2nd opinion. Give us a chance...you've got nothing to lose!

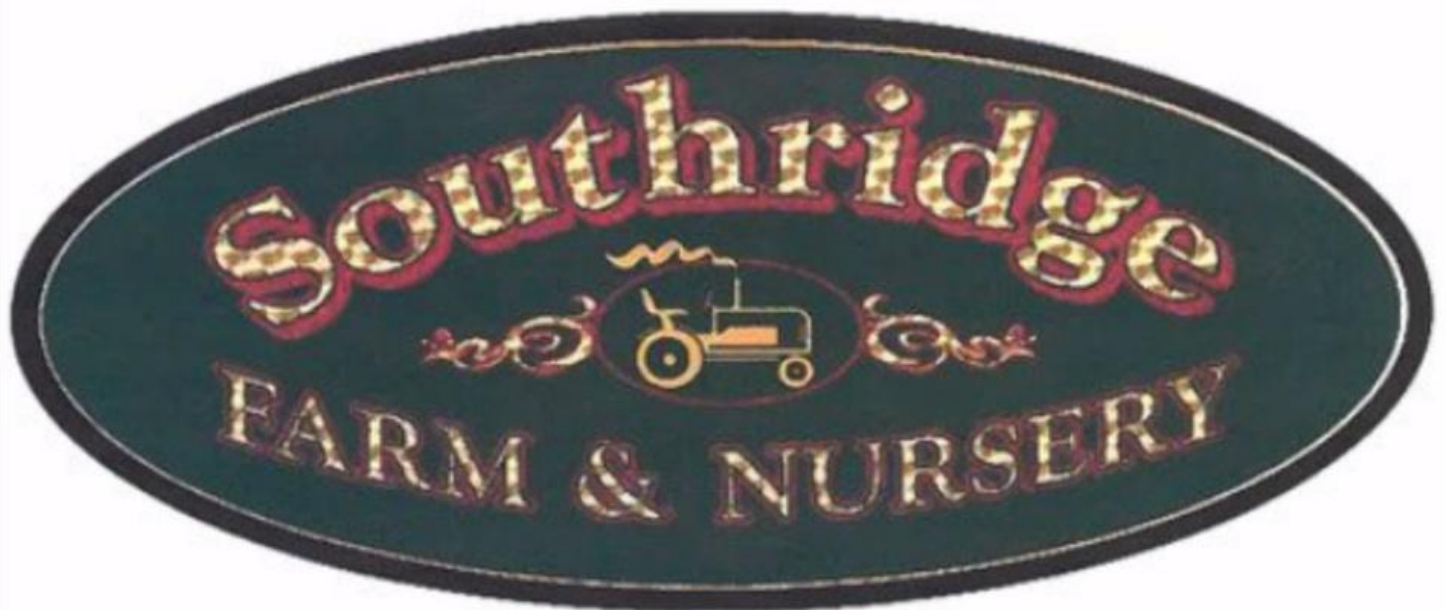
PROPERTY LIABILITY COMMERCIAL AUTO UMBRELLA EMPLOYEE BENEFITS
WORKERS' COMP BONDS EMPLOYEE BENEFITS DISABILITY LIFE



508 787 5177



businessinsurance@dfmurphy.com





Killington



CHERRY AND GATE, INC

LEGS[®]

LEGACY EQUITY GROWTH SERVICES



PJ HAYES INC.

EXCAVATING

399 SOUTH ST. WALPOLE MA 02081 | 508-668-9710



Rt. 28A & County Rd. • Cataumet, MA

www.courtyardcapecod.com

508-563-1818

*Owned & Operated by
Jay Miller*



Sportshots

Photography by Ned Costantino

115 Harvey Circle, Hanson, MA 02341 c781.789.6276

photographybyned@comcast.net



Proudly serving the Boston Bruins Alumni

— CERTIFIED PUBLIC ACCOUNTANTS —

JOSEPH MAVILIO, CPA

27 Water Street • Suite 113
Wakefield, Massachusetts 01880

Telephone (781) 246-5154
Fax (781) 246-5158

e-mail: joe.mavilio@maviliocpa.com



Alumni Spotlight

*In Memory of our
Departed Friend*



ED SANDFORD
1928-2023