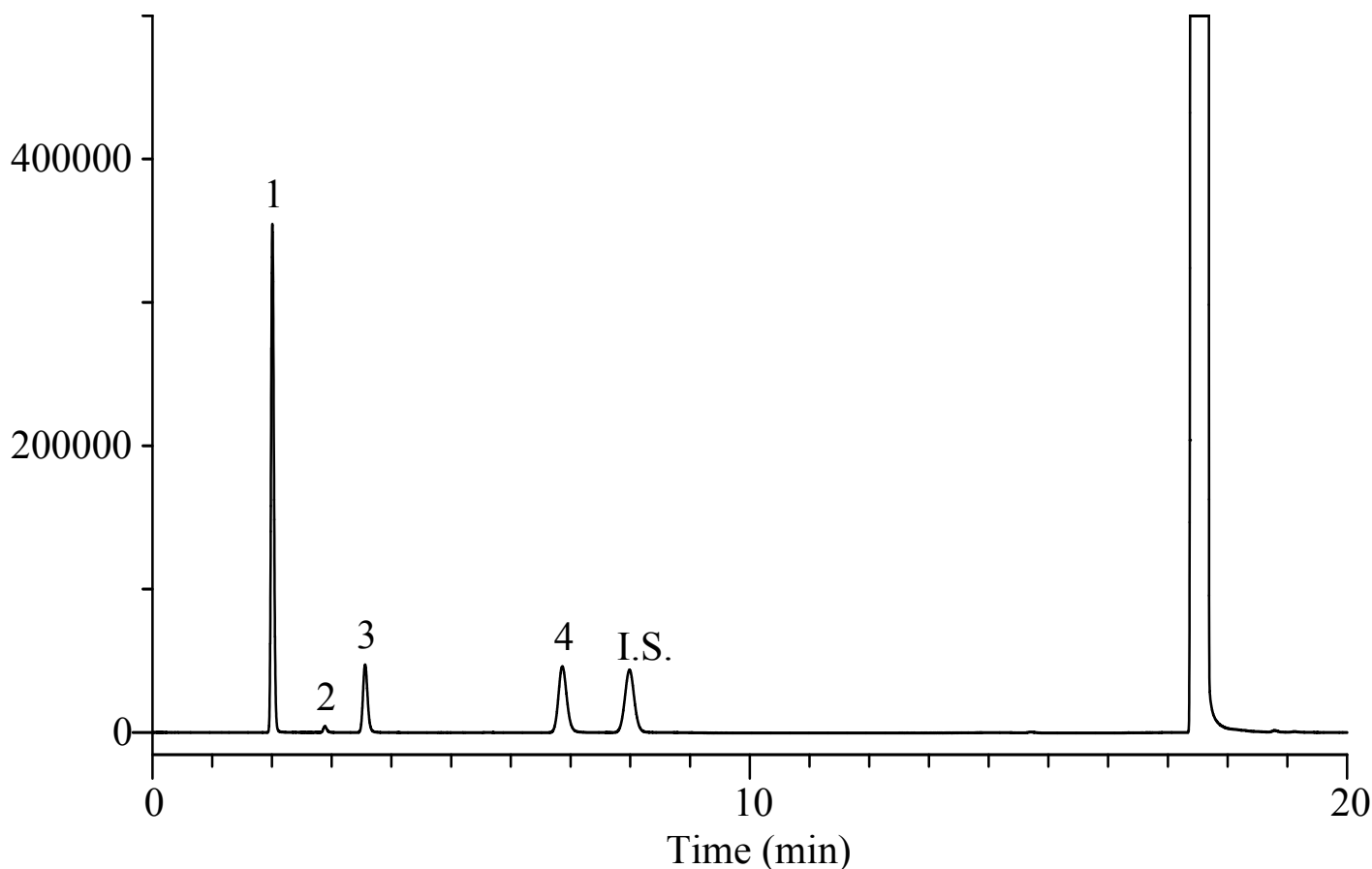


InertSearch™ for GC

InertCap® Applications

Purity test of Epirubicin Hydrochloride

Data No. GA144-0875

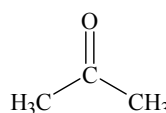


Conditions

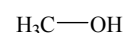
System : GC/FID
Column : InertCap WAX
0.53 mm I.D. x 30 m df = 1.00 µm
Col. Cat. No. : 1010-67445
Col. Temp. : 40 °C (11 min hold) - 10 °C/min
- 90 °C - 50 °C/min - 130 °C
Carrier Gas : He 30 kPa
Injection : Split flow 94 mL/min
120 °C
Detection : FID Range 10⁰
150 °C
Sample Size : Analyte in *N,N*-Dimethylformamide
1.0 µL

Analyte : 1. Acetone 1.25 µL/mL
2. Methanol 0.01 µL/mL
3. Ethanol 0.30 µL/mL
4. 1-Propanol 0.32 µL/mL
I.S. 1,4-Dioxane 1.00 µL/mL
*Standard mixture

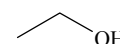
Chemical Structure



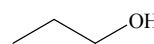
1. Acetone



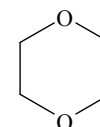
2. Methanol



3. Ethanol



4. 1-Propanol



5. 1,4-Dioxane

Structures are created using Chemistry 4-D Draw which is provided by ChemInnovation Software, Inc.