

ISSUE 3 • JANUARY 2025

4-H UPDATES

Official Newsletter of Barber County 4-H

Upcoming Leadership Events



Make a plan in January to focus on leadership throughout the year.

Here are a few upcoming leadership events:

4-H Leadership Day: Who: 6th through 12th grade 4-Hers
What: Conference about Leadership
When: Saturday Jan. 11th
10-12:30 Am
Where: Gray County Fair Grounds
Cimarron, KS

See the flyer at the end of this newsletter

Citizenship In Action: See page 2 for an in-depth description of this event!

Citizenship Washington Focus: Road trip across the USA stopping in multiple cities, to learn share and tour with youth from other states. See Capitol Hill, Congress, historical sites, memorials, and much more! . June 18-28 2025. Registration will begin in early February of 2025.

Don't forget about the multiple global citizenship programs! There is the International 4-H member Exchange, State 4-H youth exchange, hosting an exchange student from another country, and other programs. We will add more information in upcoming newsletters as we receive it, and if interested ask at the Extension office. We would be happy to provide you with any information you need.

This issue:

Leadership Events
PAGE 1

Club Days and CIA
PAGE 2

4-H Council Info
PAGE 3

Looking Ahead
PAGE 4

Record Book Roundup
PAGE 5

State Events
PAGE 6

More State Events
PAGE 7

Back Cover
PAGE 8



Club Day

4-H Club Day is a public speaking and performing arts contest.

Options include demonstrations, talks, reading, speakers, musical numbers, and skits.

Each club turns in their entries. These are due February 10.

Details, including scoresheets, are available at www.barber.k-state.edu/4-h/2024%20Club%20Day%20Guidelines.pdf



Citizenship In Action

What: Would you like to have more influence in laws and rules that affect your life? Then you'll want to go to Kansas 4-H Citizenship in Action! This two day event is sponsored by the State 4-H Youth Leadership Council.

The purpose of the event is for Kansas youth to learn how the state legislative process works and how their voice and participation in decision-making can make a difference in their local communities. The legislative visit will not only familiarize youth with the capitol building, but will also show them how they can affect the legislative process.

When: February 16-17, 2025

Where: Topeka KS - Hotel Topeka at City Center (formerly Capitol Plaza)

Who: Youth 13-18 years old by January 1 of the current year

Registration: Coming Soon!

Registration Deadline: January 24, 2025

BANQUET will be on Sunday evening with our Legislators. Followed by debating bills in the House and Senate.



4-H Council September Minutes

BARBER COUNTY 4-H COUNCIL
SEPTEMBER 23, 2024



THE SEPTEMBER MEETING OF BARBER COUNTY 4-H COUNCIL WAS HELD ON SEPTEMBER 23, 2024, AT 7:00 P.M.

OUR TREASURER REPORTED A BEGINNING BALANCE OF \$5,285.78 AND AN ENDING BALANCE OF \$4,905.30.

IN OLD BUSINESS WE MOVED TO HAVE THE ACHIEVEMENT BANQUET ON NOVEMBER 2, 2024 AT 7:00 P.M., WITH DOORS OPENING AT 6:00 P.M., AND A POTLUCK STYLE DINNER.

IN NEW BUSINESS, WE ANNOUNCED THAT CLUBS WOULD NEED TO GET A LIST OF MEMBERS THAT THEY ARE PAYING FOR BY OCTOBER 1, 2024. WE ALSO ELECTED A NEW SLATE OF OFFICERS.

- CALLAN SMITH – PRESIDENT
- MARTIN MILLS – VICE PRESIDENT
- BRECKYN HILTNER – SECRETARY
- CalLEN CORR – TREASURER

IT WAS MOVED TO HAVE OFFICER'S TRAINING ON OCTOBER 12TH, 2024. CALLEN CORR AND DANI MIXON VOLUNTEERED TO SERVE ON THE PACK THE PANTRY PLANNING COMMITTEE.

IN ANNOUNCEMENTS, IT WAS ANNOUNCED THAT 4-H ENROLLMENT OPENS IN 4-H ONLINE OCTOBER 1, 2024. SOUTH BARBER FFA LIVESTOCK JUDGING WILL BE ON OCTOBER 9, 2024. KANSAS 4-H YOUTH LEADERSHIP FORUM AT ROCK SPRINGS RANCH WILL BE NOVEMBER 23-24, 2024 AND THE BARBER COUNTY FAIR WILL BE JULY 24-27, 2025.

THE NEXT 4-H COUNCIL MEETING WILL BE ON NOVEMBER 2ND, FOLLOWING THE ACHIEVEMENT BANQUET.

SUBMITTED BY THOMAS MILLS

4-H Council Meetings

FEBRUARY 24, 2025
IN MEDICINE LODGE
7:00 PM

MAY 19, 2025
IN MEDICINE LODGE
7:00 PM

SEPTEMBER 22, 2025
IN MEDICINE LODGE
7:00 PM
FOLLOWED BY
RECORD BOOK
SCREENING



Tagging Dates

MARKET BEEF: MARCH 7

BREEDING BEEF: MAY 2

BUCKET CALF: MAY 2

SWINE: MAY 2

SHEEP: MAY 2

MEAT GOAT: MAY 2

COST OF COUNTY TAGS: \$3
EACH

COST OF STATE EID TAGS: \$3
EACH

HORSE PAPERS: JUNE 1

Office Closed Days:

- December: 24, 25, 26, 27, 30, 31
- January: 1, 20
- February: 17

Looking Ahead. . . .

January 2025

- January 4: K-State Women's Basketball 4-H Day
- January 16: SW Record Judging
- January 24: CIA Registration Due

February

- February 22: Club Day; Entries Due Feb 10
- February TBD: Shooting Sports Leader Training
- February 16 and 17: Citizenship in Action
- February 22 and 23: Horse Panorama-Rock Springs (More Info to Come)

March

- March TBD: State 4-H Horse Judging Contest
- March 1: Swine Jr. Producer Day, KS 4-H Scholarships Due
- March 22: Super Saturday @ Colby, Goat Jr. Producer Day, Regional Club Day

April

- April 17: Youth Entrepreneurship Challenge
- April 19-20: Spring Livestock Show

May

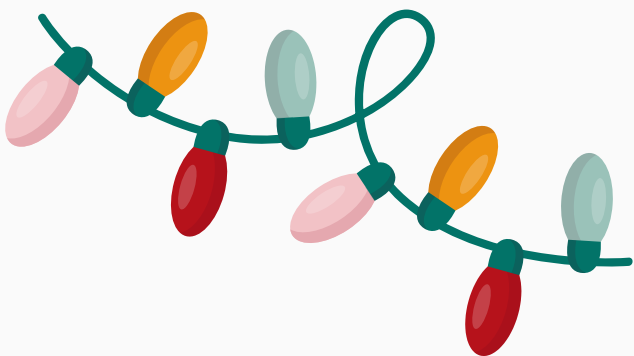
May 9: Camp Registration Forms Due

June

- June 4-6: Discovery Days
- June 17-19: Wildhorse Camp at Silver Maple

July

- July 24-27: Barber County Fair



Record Book Roundup

MONTHLY TIPS FOR COMPLETING YOUR RECORD BOOK



Take Note This Month

Scholarships

The Barber County 4-H Foundation Scholarship is due January 31.

Barber County Cattlemen's is due February 7.

These are both available at www.barber.k-state.edu/4-h/

The State 4-H Scholarship details are on page 6.



Record Book are coming in January

Record Books with all of your project report forms will be returned to you at your January Club Meeting if your leader has picked them up from the Extension Office.

January is a great time to set goals for each project if you haven't already. Goals should be SMART. Check to see if your goals contain these pieces.

The bottom line, get a jump start now to make August and September easier when finishing up and applying for awards.

S	Specific	Make your goal specific and narrow for more effective planning	
M	Measurable	Make sure your goal and progress are measurable	
A	Achievable	Make sure you can reasonably accomplish your goal within a certain time frame	
R	Relevant	Your goal should align with your values and long-term objectives	
T	Time-based	Set a realistic but ambitious end date to clarify task prioritization and increase motivation	

indeed

State Wide Events

Flyers, Images, Notes about State Wide Events

2024 Kansas 4-H Scholarships

Scholarships are due March 1st, 2023 by 11:59PM CST.



Full details are available on the [Kansas 4-H Website under Scholarships](#). For the sake of clarity in the following information, there will be two types of scholarships referenced; State 4-H Scholarships and the Vanier Family Scholarship Program (VFSP).

Eligibility

The new scholarship process has combined the State 4-H Scholarships and the Vanier Family Scholarship Program (VFSP) applications together. We hope that this encourages more applicants to pursue both of these scholarship opportunities. Please review the chart on the [webpage](#) to see which scholarships you are eligible for.

What You Will Need to Apply:

Application

Part 1: Select the scholarship program(s) that you are applying for (State 4-H Scholarships and/or the Vanier Family Scholarship Program).

Part 2: Answer questions regarding demographics, general 4-H participation, and academic information.

Part 3: Attach your Cover Letter and Resume (in a PDF). Please reference the Cover Letter and Resume handouts for additional information.

Guidelines

[Cover Letter](#)

[Resume](#)

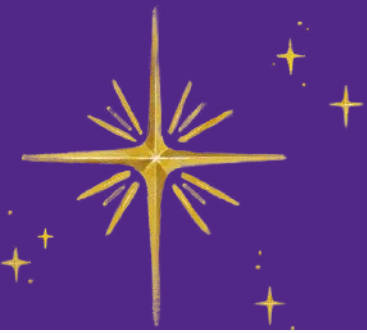
Part 4: Submit!

References

You need two references for your application to be considered complete. When identifying references, select individuals who can speak to the leadership, dedication, and commitment you have demonstrated. You should NOT use family members as a reference. There are no requirements and/or restrictions for how you should know your references.

References will NOT submit a letter of recommendation. References will be asked specific questions.

This is separate from the Barber County 4-H Foundation Scholarship. They are due January 31.



More State Wide Events

Flyers, Images, Notes about State Wide Events

YQCA Launching Scholarship Program

The national youth livestock quality assurance program, Youth for the Quality Care of Animals (YQCA), recently announced they will be launching a scholarship program in 2025. Applications are expected to open in January and close on February 17. High school seniors through college students who are 21 years of age are encouraged to apply. Mark your calendars now, as it appears there will be a quick turnaround to apply once applications open! For more information, visit the [YQCA program website](#).



Kansas 4-H Day with K-State Women's Basketball

K-State Research and Extension Barber County is excited to give you a heads up about a K-State Women's Basketball Event. 4-H Day is coming to Bramlage Coliseum on Saturday, January 4th, 2025 at 4 pm when they take on Texas Tech. For anyone interested in attending, please see flyer at end of newsletter. It has pertinent information.

Save the Date for Junior Producer Days

Mark your calendar!! The 2025 K-State Junior Producer Day dates have been set for next spring. Junior Swine Producer Day will be Saturday, March 1, with Junior Meat Goat Producer Day following on Saturday, March 22. and Super Saturday @ Colby also on March 22. See flyer at end of newsletter for more information.

Camps Coming in 2025:

Rock Springs Ranch Camps:

Every year, thousands of kids come to 4-H Camp at Rock Springs Ranch. They unplug, explore, play and learn the kinds of lessons that can last a lifetime. Campers grow socially, emotionally, physically and cognitively. Many make friends for life. It's also just plain FUN!

The values of 4-H are at the core of Rock Springs Ranch and they guide all of our programming. We believe the lessons learned here can create a foundation for success that will last far beyond their visit. **But you don't have to be a 4-H member to come to camp at Rock Springs!**

Everyone is welcome, regardless of 4-H membership!

Visit [Rock Springs Ranch](#) if you'd like to learn more about sessions, dates, rates and the 4-H Camp experience!

Wildhorse Camp at Silver Maple: June 17-19



K-STATE
Research and Extension

Barber County

*Happy
Holidays*

K-State Research and Extension is committed to providing equal opportunity for participation in all programs, services and activities. Program information may be available in languages other than English. Reasonable accommodations for persons with disabilities, including alternative means of communication (e.g., Braille, large print, audio tape, and American Sign Language) may be requested by contacting the event contact Robin Eubank-Callis two weeks prior to the start of the event at 620-886-3971 or reubank@ksu.edu. Requests received after this date will be honored when it is feasible to do so. Language access services, such as interpretation or translation of vital information, will be provided free of charge to limited English proficient individuals upon request.

Kansas State University Agricultural Experiment Station and Cooperative Extension Service

K-State Research and Extension is an equal opportunity provider and employer.

Barber County Office

118 E Washington
Medicine Lodge, KS 67104

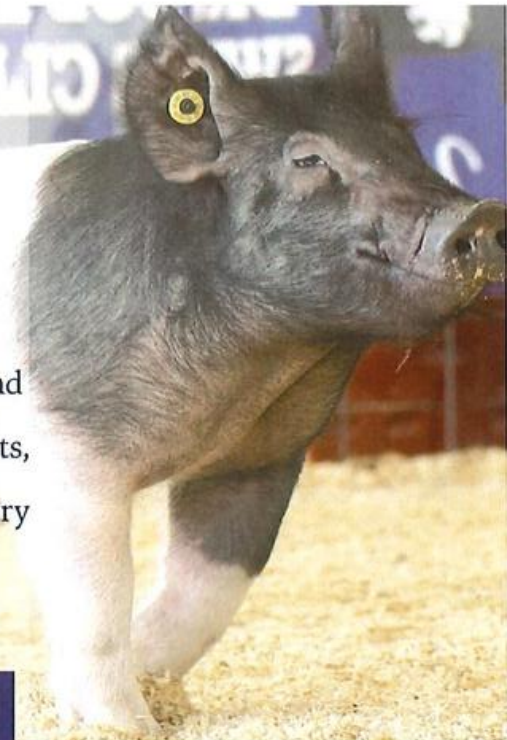
620-886-3971

www.Barber.ksu.edu

Facebook:
www.facebook.com/barbercountyextension



2025 K-State Junior Swine Producer Day



Join us on Saturday, March 1, 2025 for the biennial K-State Junior Swine Producer Day at the Stanley Stout Center in Manhattan. This educational event will be a fun-filled day in which youth, parents, agents, ag teachers, and swine project leaders can increase their knowledge of youth swine projects. Presentations will be provided by K-State faculty members, graduate students, former exhibitors, and guest speakers. All ages and skill levels are invited! Participants will receive a K-State Show Pig Guide, t-shirt, and complimentary lunch. Only those who register by February 5 will receive a t-shirt. The registration fee is \$20/person for those who sign up by the registration deadline, or \$25/person after that date. Registration is limited to 400 attendees, on a first come, first served basis. This is a family event! Anyone attending must register, including all youth and adults.

March 1



Tentative Schedule

- 8:00AM Registration Opens
- 9:00AM Welcome
- 10:15AM Project Selection
- 11:00AM Breakout Sessions
 - Nutrition, Meats, Facilities & Equipment, Breeds & Ear Notching
- 12:00PM Lunch
- 12:45PM Health
- 1:30PM Breakout Sessions
 - Showmanship, Daily Care & Clipping, Show Day Prep, Resources
- 2:00PM Wrap-up
- 2:30PM YQCA Training (optional)



Registration

- ✓\$20/person by February 5
- ✓\$25/person after February 5
- ✓Late registrants will not receive a t-shirt.
- ✓All attendees must register, including youth, parents, and adults.
- ✓No refunds.
- ✓ Attendance is limited to the first 400 participants to register.



Questions?

Joel DeRouchey
jderouch@ksu.edu
785.532.2280

Lexie Hayes
adhayes@ksu.edu
785.532.1264

Register By February 5

Limited Attendance

Location
Stanley Stout Center

Register Online
<https://commerce.cashnet.com/KSUASIND>



K-State, County Extension Councils, Extension Districts, and U.S. Department of Agriculture Cooperating. All educational programs and materials available without discrimination on the basis of race, color, religion, national origin, sex, age, or disability.

K-State Research and Extension and the Department of Animal Sciences & Industry, or their assignees, reserve the right to photograph, record the image and/or voice of participants for future research, educational, or promotional purposes. By attending, you provide consent to the above items and waive all rights to claims for payment or royalties in connection with

Scan Me!

K-State Junior MEAT GOAT PRODUCER DAY

3.22.25

Event

Join us on Saturday, March 22, 2025 for the biennial K-State Junior Meat Goat Producer Day at the Stanley Stout Center north of the K-State campus in Manhattan. This educational program will be a fun-filled day in which youth, parents, agents, ag teachers, project leaders, and volunteers can increase their knowledge of youth meat goat projects. Presentations will be provided by K-State faculty members, graduate students, former exhibitors, and guest speakers. All ages and skill levels are invited! Participants will receive a K-State Meat Goat Show Guide, t-shirt, and complimentary lunch. Only those who register by the deadline on February 26 will receive a t-shirt. The registration fee is \$20/person before February 26 and \$25/person after the deadline. This is a family event! Anyone attending must register, including all youth, parents, and adults. Registration is limited to 400 participants, filled on a first come, first serve basis.

K-State, County Extension Councils, Extension Districts, and U.S. Department of Agriculture Cooperating. All educational programs and materials available without discrimination on the basis of race, color, religion, national origin, sex, age, or disability.

Registration

- 💰 \$20/person by February 26
- 💰 \$25/person after February 26
- 💰 Late registrants will not receive a t-shirt.
- 💰 All attendees must register, including youth, parents, & adults.
- 💰 No refunds
- 💰 Attendance is limited to the first 400 participants to register.



Scan me!

Questions?

Lexie Hayes
adhayes@ksu.edu
785.532.1264

Tentative Program

Friday, March 21
5:00-7:00PM *Optional Tour*
Sheep & Meat Goat Center

Saturday, March 22
8:00AM Check-in
9:00AM Welcome
9:15AM Selection
10:00AM Breakout Sessions
-Nutrition
-Facilities & Equipment
-Doe Management & Kidding
11:15AM Health & Wellness
12:00PM Lunch
1:00PM Breakout Sessions
-Showmanship
-Reproduction
-Clipping & Grooming
3:15PM Wrap-up
3:30PM YQCA Training (*optional*)
4:00-6:00PM *Optional Tour*
Sheep & Meat Goat Center

Register Online

<https://commerce.cashnet.com/KSUASIND>

By
February 26



KANSAS 4-H HORSE PANORAMA

SAVE THE DATE!!

FEBRUARY 22-23, 2025
ROCK SPRINGS

Save the date! Registration
information coming soon!!!

Kansas State University Agricultural Experiment Station and Cooperative Extension Service.
K-State Research and Extension is an equal opportunity provider and employer.

K-STATE | 
Research and Extension

Who Can Attend?

4-H Members ages 9-18 and adult volunteers. Horse Panorama is a compilation of various contests related to the Horse Project. Contests include: quiz bowl, hippology, public speaking presentations, photography and educational posters.

4-H LEADERSHIP DAY: ELEVATE WITH DUSTIN GALYON

A FOCUS ON LEADERSHIP AND SELF-WORTH

CHECK OUT [HTTPS://DUSTINGALYON.COM/](https://dustingalyon.com/) TO LEARN ABOUT OUR SPEAKER

JANUARY 11, 2025 10AM-12:30PM

**EVENT LOCATION:
GRAY COUNTY FAIR GROUNDS
17002 W HWY 50, CIMARRON, KS**

SPONSORED BY GRAY COUNTY 4-H AND
WALNUT CREEK DISTRICT 4-H

K-STATE
Research and Extension



PIONEER



ACTION FOR ALEX



NW 4-H Advisory Daycamp

K-STATE RESEARCH AND EXTENSION IS COMMITTED TO PROVIDING EQUAL OPPORTUNITY FOR PARTICIPATION IN ALL PROGRAMS, SERVICES, AND ACTIVITIES. REASONABLE ACCOMMODATIONS FOR PERSONS WITH DISABILITIES MAY BE REQUESTED BY CONTACTING GRAY COUNTY EXTENSION OFFICE AT 620-855-3821.

Event is for **4-Hers in 6th -12th grades** and 4-H volunteers.

\$10/4-Her or Volunteer. Registration Due to Local Counties by January 7, 2025

Name: _____ Grade: _____

Age: _____ Circle One: Male Female

Extension County/District: _____

Address: _____

City, State, Zip: _____

Parent/Guardian: _____

Home #: _____ Cell #: _____

Food Allergies: _____

PROJECT EXPLORATION: BUILDING BLOCK ENGINEERING & ROBOTS

January 6, 2025

10:30 A.M. Building Block Engineering: See State Fair Quality Projects & Learn to build without a kit.

Noon: Pizza Party (No Charge)

1:00 P.M. Explore the Robotics Project.

Dash Robots will be used.



**Call the Extension Office by January 3 to sign up
Sign up for the Morning, Afternoon or Both**