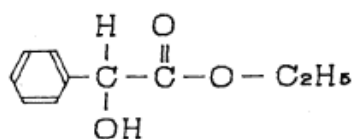
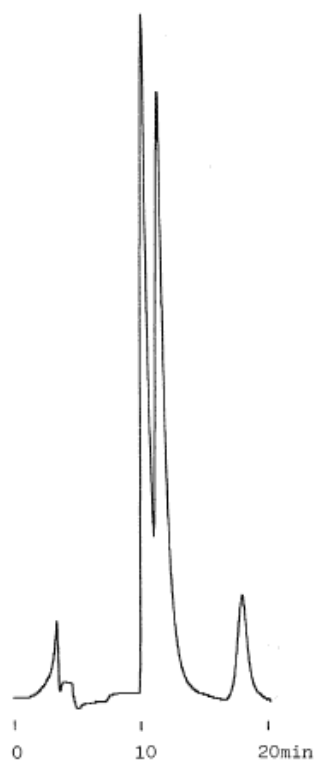


## Mandelic acid ethyl ester

Data No. LA368-0000



Column : Bioptic AV-1

5µm

150 × 4.6 mmI.D.

Column Cat. No. : 5020-02511

Eluent : 0.1M KH<sub>2</sub>PO<sub>4</sub> +0.1% H<sub>3</sub>PO<sub>4</sub>

Flow rate : 1.0 mL/min.

Col. Temp. : 30°C

Detection : UV 220nm

Injection Vol. : 1µL

Sample : Mandelic acid ethyl ester 10mg/3mL

Solutes : Mandelic acid ethyl ester