

EAL Foundation Course

Pre-GCSE Pathway

sidcot.org.uk



Sidcot
Live Adventurously

Pre-GCSE Pathway

This Pathway programme has been designed to offer international students, at Year 7 upwards, a holistic pre-GCSE curriculum with a strong emphasis on English skills development, and will provide excellent preparation for the GCSE course. Students will enjoy the advantages of being able to integrate with native English speaking students for a large part of their timetable, whilst still receiving intensive specialist language support. Our small class sizes ensure every student receives the attention needed to succeed.



One of the key elements of success for children who are able to benefit from this experience is the **power of the English language**. Developing skills in communication - speaking, listening, reading and writing - in English at the earliest opportunity, will put those students firmly ahead when it comes to gaining **internationally recognised qualifications** and will give them the confidence they need to achieve their goals.

A British education is globally recognised as being an excellent foundation for children to prepare them for life in the international world in which they live. It offers them the breadth of opportunity both inside and outside the classroom that, for many, is just not available in their own countries. This is why many families will choose to send their children to study at schools in the UK.

English as an Additional Language sessions are delivered by **qualified and experienced specialists** to help students whose first language is not English learn to **communicate well** with both native and non-native speakers of English in most everyday situations.

Depending on needs, Geography, History, Maths, Computing, PSHE and Sciences may be taught as EAL sessions by specialist tutors.



In order to encourage integration, Tutor Groups, Art, Drama, Sport, Music and Technology will be taken as mainstream subjects, together with other students of their own year group who are not part of the Pathway programme.

For further information, including to arrange a visit, please contact admissions@sidcot.org.uk

Programme content

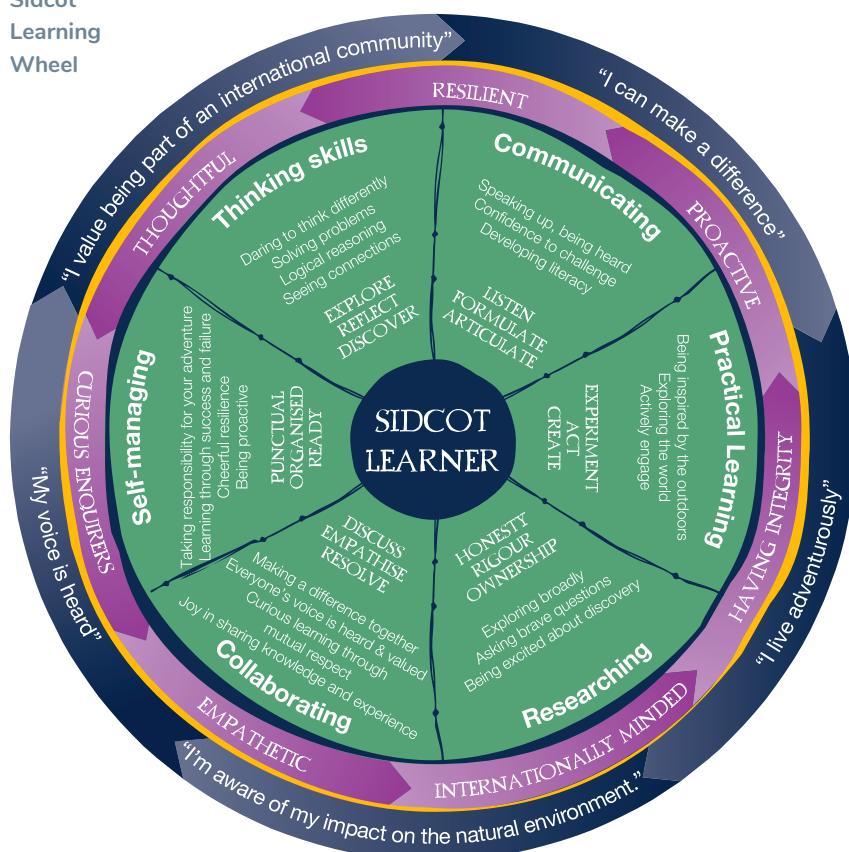
English as an Additional Language (EAL)

Unlike schools who provide some one-to-one or small group sessions for students who need additional English language support, the Pre-GCSE Pathway will provide a much more **intensive** and **structured programme**. Students will normally have a number of sessions a week of EAL classes where they will be taught by **specialist teachers** to improve their English language and study skills with the aim of achieving an **internationally recognised EAL qualification**.

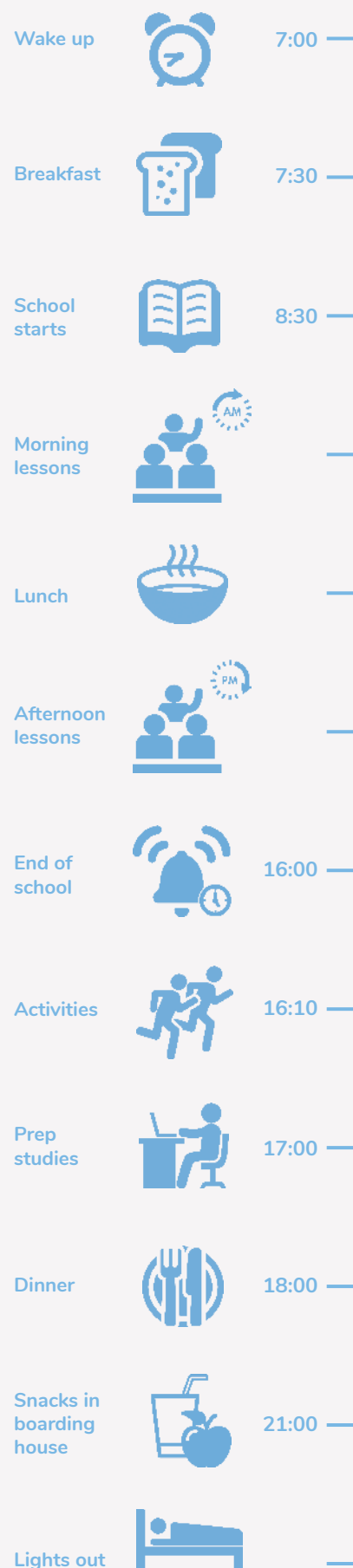
Sidcot Learning Wheel

At Sidcot there is a bespoke style to the teaching and learning programme known as the **Sidcot Learning Wheel**. The skills of research, analysis, evaluation, reflection, collaboration and communication are an integral part of the individual student development which will not only equip them for higher education and employability, but also develop their **social skills, emotional intelligence, resilience** and **determination** to make a difference in the world.

Sidcot Learning Wheel



Boarders' typical daily time line



Pre-GCSE Pathway class lessons

Students will receive 10 group lessons per week as part of their Pathway course. Other lessons will be taken on an integrated basis with their year group, including PE, Music, PSHE, Art, Drama and Tutor time.

Should they be required, additional 1:1 EAL lessons will also be provided at additional charge, to support personalised progress. This requirement will be re-evaluated throughout the year.



Measuring success

Following an initial assessment of both academic and cognitive skills, Pre-GCSE Pathway students will have **on-going progress reviews** both in their language and subject knowledge development, which will be **regularly communicated to them and to parents** and used to determine individual learning targets. Depending on progress, students will be able to transfer to one, several, or all mainstream subjects at termly intervals within their peer group.

Students will follow the University of Cambridge ESOL-accredited syllabus for **KETfS** (Key English Test for Schools) or **PETfS** (Preliminary English Test for Schools) to develop their speaking, listening, reading and writing skills. Those students who are more advanced, will be able to sit Cambridge **FCEfS** (First Certificate English for Schools). Academic success will be measured by these formal external examinations.



Equestrian at Sidcot

The Equestrian Centre offers a rare combination – a school livery yard in the heart of a thriving co-ed day and boarding school. For students who already ride, or who want to learn, Sidcot is a popular choice, as we pride ourselves on our friendly atmosphere for both beginners and experienced riders alike.



PASS

The Programme of Activities for Sidcot Students (PASS) has been designed to provide all students throughout the School with an exciting opportunity to live adventurously, to live out the School's core values, to play an active part in being an Ashoka Changemaker School, to develop leadership skills, and to further enhance their ability to be excellent team players.

Students choose activities to last for a half term. This will be either a 4 or 5 week block depending on the length of the term. Throughout the year, students can take part in 6 different PASS activities and develop a range of skills whilst living adventurously.

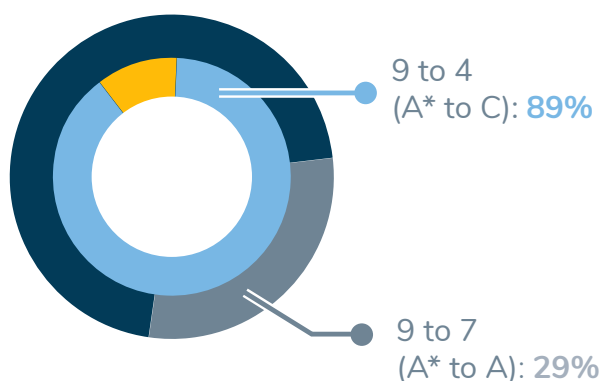
“The Quaker values at the heart of the School’s moral compass are powerful and a major draw for parents seeking an education based on empathy and integrity as much as academic excellence.”

THE
GOOD
SCHOOLS
GUIDE

Student Success 2025

This information gives an indication of how the School has performed in external examinations.

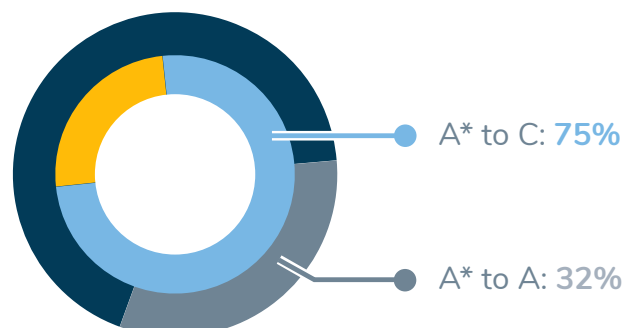
GCSE 2025



Year 11 GCSE students achieved higher than the national average across all grade boundaries.

Year 13 Results 2025

- Across our range of pathways (IB, A Level and BTEC), Year 13 students have received the equivalent to:



One student secured a place to study at the University of Cambridge and two accepted places to study Medicine.

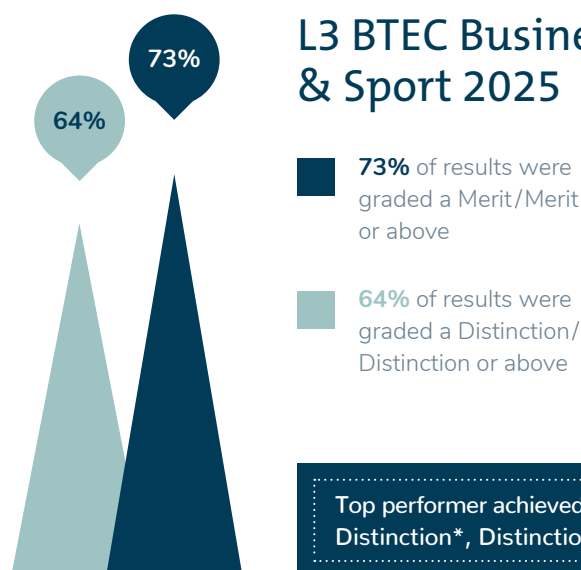
International Baccalaureate 2025

Sidcot continues to significantly overachieve the world average.

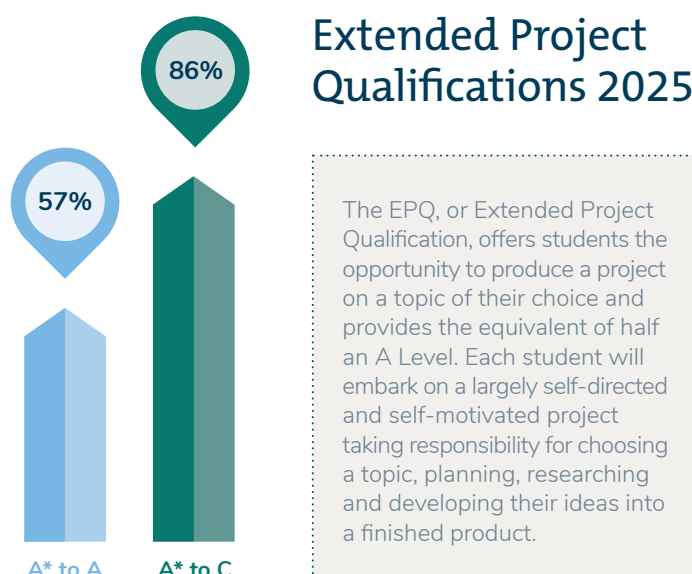


- Sidcot mean score for students who received the diploma: **33**
- Top score of **43** out of a possible 45

L3 BTEC Business & Sport 2025



Extended Project Qualifications 2025



- 95%** of UK applicants secured places at their preferred university or institution
- 49%** of students studying in the UK are attending Russell Group, Times Top 10, or specialist universities
- 22%** of students secured places at international universities

Boarding

Looking after our younger boarders

Our boarding houses are friendly, well equipped and creatively furnished to provide a real 'home from home' experience. Matrons and house staff are very mindful of the needs of younger boarders who may be living quite some distance away from their families – many for the first time – and ensure that they are always there to talk, to listen and to share the experiences of their day when they return to the House each evening.



Older students act as 'big brothers and sisters' to support this high level of pastoral care and often take part in activities and house entertainment to ensure that they are fully occupied and enjoying their time as a boarding student.



At weekends, there are many different trips, outdoor activities, clubs and social events which ensure that friendships can be further developed outside the classroom.

Food is an important part of any boarding student's life! All students and staff at Sidcot enjoy a wide variety of tastes and flavours from around the world, with plenty of fresh and healthy options available at all meal times including vegetarian options. Provision is also made for special dietary, medical or religious needs.

Physical and mental healthcare is also well provided by a team of professionals on site. All students are encouraged to be involved with some form of physical exercise outside of the timetable as well as finding time to relax and unwind with friends.



Full details can be found in our Boarding Handbooks and the School Prospectus.

Sidcot life

Pre-GCSE Pathway: The Benefits

- Students will receive an intensive EAL programme, but will also be integrated within their own peer group for many subjects and activities.
- Students will be at a similar level on arrival and will not feel disadvantaged by those who do not need as much EAL support – allowing their confidence and ability to grow at their own pace.
- Students will be well prepared for entry to GCSE/IGCSE and the start of the more formal external examinations they will need in order to progress towards Higher Education.
- Students will have the opportunity to make new friendships from around the world as well as those who live in the UK.



Programme costs

Annual fees

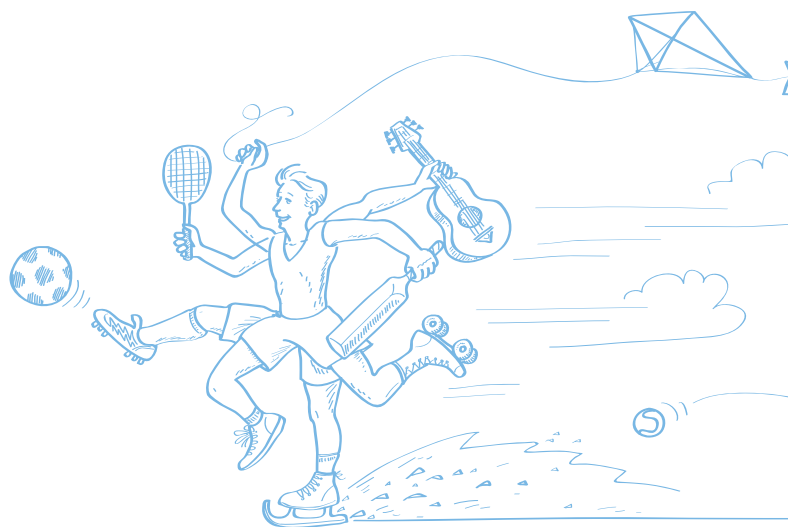
£44,190 (Non-Visa) | £45,240 (Child Visa)

Fees will include:

- Group collection and return to airports at the start and end of each term (plus Autumn half-term only)
- Administration fee for students requiring Tier 4 visa
- All tuition, books, meals and laundry
- Weekend activities
- UK school trips

Fees do not include:

- Any additional one-to-one individual EAL lessons, if required
- Travel, health insurance and pocket money
- Overseas school trips
- School uniform



Location

Travel information

Sidcot is located in the South West of England, amongst the Mendip Hills, one of the UK's most beautiful rural locations.

The School is only 13 km (15 minutes drive) from Bristol International Airport with flights to worldwide destinations. It is also within easy access of London International Airports and mainline rail services (2 hours to London Paddington).

In contrast to the peaceful and rural setting of the School campus, the boarding students also have the benefit of the vibrant city of Bristol less than 30 minutes away. Here they will find numerous cultural festivals, theatres and cinemas, shopping malls and entertainment venues. The Victorian seaside town of Weston-Super-Mare is only 20 minutes away, with its traditional pier, promenade and bracing sea air for those who really want to experience stepping back in time when children used to build sandcastles and eat ice-cream! Great fun for our boarders!

