

Rediscover

TRAVEL GUIDE

THE GREAT SMOKY MOUNTAINS

of North Carolina



VISITORS WELCOME. THE NC SMOKIES ARE BETTER THAN EVER POST HELENE. READ ABOUT RECOVERY EFFORTS ON PAGE 26.

OPEN FOR *Adventure*

YOUR OFFICIAL ADVENTURE ACTIVITIES GUIDE TO THE NORTH CAROLINA GREAT SMOKY MOUNTAINS

YOUR PERSONAL HANDBOOK INCLUDES:

- ★ **FRONT:** Activity Lists (pages: 4-29)
- ★ **SECOND HALF:** Specific Areas (pages: 30 to 107)
- ★ **BACK:** Fold-Out Map of the region

YOU'RE ALWAYS WELCOME IN OUR BACKYARD TO EXPERIENCE:

- ★ **ADVENTURE**
- ★ **BEAUTY**
- ★ **SOUTHERN HOSPITALITY**

Every effort has been made to ensure the accuracy of the information in this publication. Please contact mici@visitsmokies.org with any additions or corrections.

The back fold-out map is for general informational purposes only and not to scale.

Reproduction in any part without permission of Smoky Mountain Host is prohibited.

Smoky Mountain Host
Of North Carolina
Visitor Information Center
4437 Georgia Road
Franklin, NC 28734
828-369-9606 • www.visitsmokies.org



**FRONT COVER PHOTO BY:
ERIC HAGGART**

Rediscover

THE GREAT SMOKY MOUNTAINS



EXPERIENCE THE SMOKIES WITH EXCLUSIVE TRAVEL DEALS!

Enjoy great savings on lodging, attractions, and dining. Scan the QR code to explore more and make your return unforgettable!



THE GREAT SMOKY MOUNTAINS OF NORTH CAROLINA ARE OPEN FOR ADVENTURE.

We've made it through Hurricane Helene united as a region and stronger than ever. We're open for business and ready to help you make mountain memories.

See **page 26** for our feature on one local photographer's journey through Hurricane Helene's aftermath.

OPEN FOR *the Journey*

Blueways	4-5
#LoveNC Smokies	6-7
Campgrounds & Recreation Areas	8-9
Hiking, Biking & Horseback Riding Trails	10
Kids Adventures	11
Must-Do Adventures	12-13
National Parks & National Forests	14-15
Outdoor Experiences	16-19
Scenic Byways	20-21
Waterfalls	22-25
Capturing Hope: A Photographer's Journey Through Hurricane Helene's Aftermath	26-29

WESTERN NC REGION

Bryson City	30-41
Cherokee	42-49
Fontana, Robbinsville & Lake Santeetlah	50-57
Franklin & Nantahala	58-73
Hayesville & Brasstown	74-77
Highlands, Cashiers, Glenville, Sapphire & Scaly Mountain	78-81
Murphy & Andrews	82-87
Sylva, Dillsboro, Balsam & Cullowhee	88-97
Waynesville, Maggie Valley & Canton	98-105
Nearby Neighbors - GA & NC	106-107

Published by
Smoky Mountain Host



Proud to be part of
the Blue Ridge National
Heritage Area



Smoky Mountain Visitor Center is
operated in partnership with the North
Carolina Department of Transportation



Wayan Bald
By contest winner
David McKenzie



SmokyMountainHost



@VisitSmokies



VisitSmokies



@visitsmokies



Tag your adventure **#LoveNCsmokies**

828.369.9606 | VisitSmokies.org

SHARE YOUR
GREAT SMOKY MOUNTAINS
NORTH CAROLINA ADVENTURE

#LOVENCSMOKIES

SUNSETS ARE BETTER IN
NORTH CAROLINA'S
MOUNTAINS



ncdot.gov/scenic

ARCHEOLOGY • CULTURE • HISTORY
NATURE • RECREATION • SCENIC BEAUTY
ALL PART OF A NC BYWAY OUTING

#NCSCENICBYWAYS • #NCDOT

Fontana Lake
By contest winner:
Edward Campbell



NORTH CAROLINA SMOKY MOUNTAIN BLUEWAYS 167 MILES OF WATERWAYS

OPEN FOR SPLISH, SPLASHING IN THE *Blueways*

The Only National Water Trail in North Carolina: The Great Rivers & The Great Lakes of The Great Smokies. This trail is one of 33 in the National Water Trails System. It is located in the Little Tennessee Watershed, containing portions of the five major rivers:

Cheoah River

Nantahala River

Tuckasegee River

Little Tennessee River

Oconaluftee River

To learn more about the North Carolina Smoky Mountain Blueways, visit www.nrtdatabase.org/trailDetail



Grab a copy of the Blueways map from the Smoky Mountain Host Visitor Center, 4437 Georgia Road, Franklin, NC 828-369-9606 or online at smokymountainblueways.com.



Cheoah River

Located near Robbinsville.

Unique Features: Exciting Rapids—Class IV & V (during release days)

One of the most physically demanding rivers in the world!



Fontana Lake

Offers best smallmouth bass fishing.

Enjoy: Boating, Floating & Kayaking.

Hikers enjoy views from observation tower on Clingmans Dome.



Lake Glenville

Only 8 miles from Cashiers.

26 miles of shoreline.

Highest elevation lake east of the Mississippi.

Known to avid fisherman for smallmouth Bass.





Little Tennessee River

River & Watershed comprise one of the richest archaeological areas in the SE of U.S.

River drains portions of 3 national forests: Chattahoochee, Cherokee & Nantahala.



Nantahala Lake

Only place to find Kokanee Salmon in the Southeast.

Sits above Nantahala Gorge.

Known for scenic beauty, crystal-clear waters, excellent fishing.



Nantahala River

Offers family-friendly rapids & kayaking.

America's most popular 8 miles of rapids—Class II & III.

One the top 100 Trout streams in U.S.



Oconaluftee River

Considered sacred waters by the Cherokee.

Popular for: Canoeing, Tubing & Wading, Fishing.

River drops 2,000 feet over 10 miles

Famous for Rainbow, Brook & Brown Trout.



Santeetlah Lake

8 miles from Appalachian Trail.

50 primitive campsites & 200 miles of trails—Cheoah District.

Variety of fishing: Bass, Crappie, Walleye, Bream & Trout.



Tuckasegee River

Known as the "Tuck".

Popular for Floating, Fishing, Tubing, Canoeing, Rafting, Kayaking & Fly Fishing.





WESTERN NC REGION

Most of the Highest-Elevation Mountains in the U.S.

smokymountains.com/park/blog

SEE UNIQUE VIEWS

From The Great Smoky Mountains Railroad • **gsmr.com**

THE NANTAHALA OUTDOOR CENTER

Best Outfitters on Earth per National Geographic Adventure Magazine • **noc.com**

GET LUCKY

Harrah's Cherokee Casino & Resort, Cherokee and/or Harrah's Cherokee Valley River Casino & Hotel, Murphy • **caesars.com**

ABSORB CULTURE

Cherokee showcases History of Tribe, Living Re-enactments of Village Life & Authentic Cherokee artwork • **cherokeesmokies.com**





NANTAHALA & PISGAH NATIONAL FORESTS

Two of the most visited National Forests in the U.S. • fs.usda.gov

PRISTINE WATERWAYS

Best Trout fishing in the world

discoverjackson.com/outdoors/fishing

RICH APPALACHIAN HERITAGE

See craftsmanship found in handcrafted furniture, pottery, quilts and music • blueridgeheritage.com

BLUEGRASS

Enjoy great local music and traditional clogging

blueridgemusicnc.com

WATER. WATER. WATER

Swimming, waterfalls, rafting, kayaking, canoeing, paddleboarding, tubing, fishing and blueways • visitsmokies.org

DRIVE AWAY YOUR TROUBLES

Blue Ridge Parkway, Cherokeela Skyway, and NC Scenic Byways
ncdot.gov/scenic



CAMPGROUNDS AND

NANTAHALA NATIONAL FOREST

			Camping	Picnic Area	Restrooms	Trailer Space	Trailer Dump Station	Showers
1	Balsam Lake	Open April-Oct		•				
2	Bob Allison Campground	Open year-round		•	•			
3	Cable Cove	Open April-Oct	•	•	•	•		
4	Cheoah Point	Open April-Oct	•	•	•	•		
5	Cherokee Lake	Open year-round		•	•			
6	Cliffside Lake	Open May-Oct	•	•	•			
7	Ferebee Memorial	Open year-round		•				
8	Fires Creek	Open year-round		•	•			
9	Horse Cove*	Open year-round	•		•	•		
10	Hurricane Primitive	Open April 16-Dec 31	•			•		
11	Jackrabbit Mountain	Open May-Sept	•	•	•	•	•	•
12	Joyce Kilmer	Open year-round		•	•			
13	Nantahala Gorge	Open year-round		•				
14	Rattler Ford***	Open mid-Apr-mid Oct						•
15	Snowbird	Open year-round		•	•			
16	Standing Indian	Open April-Nov	•	•	•	•	•	•
17	Sunburst	Open May-Nov	•	•		•		
18	Tsali	Open April-Oct	•	•		•		•
19	Van Hook Glade	Open May-Oct	•		•	•		
20	Wayah Bald	Open April 16-Dec 31		•	•			
21	Whiteside Mountain	Open year-round						
22	Whitewater Falls	Open year-round			•			

GREAT SMOKY MOUNTAINS NATIONAL PARK

1	Balsam Mountain*	Open year-round	•	•	•	•		
2	Cades Cove**	Open year-round	•	•	•	•		
3	Cataloochee	Open April-Oct	•	•	•	•		
4	Deep Creek	Open May-Oct	•	•	•	•		
5	Elkmont*	Open year-round	•	•	•	•		
6	Smokemont**	Open year-round	•	•	•	•		

ALL NUMBERS LISTED CORRESPOND WITH FOLD-OUT MAP

RECREATION AREAS

NANTAHALA NATIONAL FOREST

		Drinking Water	Handicap Accessible	Hiking Trail	Horse Trail	Bike Trail	Swimming	Boat Ramp	Canoe/Rafting	Fishing	Scenic Views	Ampitheater	Information	Fee Required
1	Balsam Lake		•	•						•				
2	Bob Allison	•		•										
3	Cable Cove	•						•		•				•
4	Cheoah Point	•		•				•		•				•
5	Cherokee Lake	•	•							•				
6	Cliffside Lake	•		•			•			•				•
7	Ferebee Memorial								•	•				
8	Fires Creek				•					•				
9	Horse Cove*	•								•				•
10	Hurricane Primitive			•	•					•				
11	Jackrabbit Mountain	•		•			•	•		•		•		•
12	Joyce Kilmer	•		•									•	
13	Nantahala Gorge								•	•	•			
14	Rattler Ford***	•		•						•				
15	Snowbird									•				
16	Standing Indian	•		•						•				•
17	Sunburst	•												•
18	Tsali	•		•	•	•		•		•				•
19	Van Hook Glade	•												•
20	Wayah Bald			•							•			
21	Whiteside Mountain			•							•			
22	Whitewater Falls			•							•			

GREAT SMOKY MOUNTAINS NATIONAL PARK

1	Balsam Mountain*	•		•							•			•
2	Cades Cove**	•	•	•	•					•	•		•	
3	Cataloochee	•		•							•			•
4	Deep Creek	•		•	•					•				•
5	Elkmont*	•	•	•						•	•		•	•
6	Smokemont**	•	•	•	•					•	•		•	•

ALL NUMBERS LISTED CORRESPOND WITH FOLD-OUT MAP

Call the ranger station (828-524-4410) if you have additional questions about facilities and activities.

HIKING, BIKING AND HORSEBACK RIDING TRAILS

TRAIL NAME	Miles	Easy	Moderate	Difficult	Bike Trail	Horse Trail	Fishing	Handicap Accessible
Appalachian Trail to Charlie's Bunion	4		•	•				
Appalachian Trail to Wesser Bald	2		•					
Bartram Trail	37.7	•						
Benton Mackaye Trail	300	•	•	•				
Big Indian Horse Trail	8		•			•	•	
Big Snowbird Trail	12.7			•			•	
Fire Mountain Trails	10.5			•	•			
Fires Creek Area Trails	.3-5.4	•	•	•		•	•	
Fontana Village Trails	20	•	•	•	•			
Jackrabbit Mountain	14	•	•		•			
Jackrabbit Mountain Trail	2.5	•					•	
Joyce Kilmer Memorial Trail	2	•					•	
Mallonee Trail	5	•					•	•
Maple Springs Observation Point	800	•						•
Mountains-to-Sea Trail	108			•	•	•		
Panthertown Valley	30		•		•			
Santeetlah Bike Trails	15	•	•		•			
Santeetlah Lake Trail	15			•	•			
Tsali Recreation Area	15		•		•	•		
Western Carolina University Trail	6.6		•		•			
Whiteside Mountain Trail	2	•						
Yellow Mountain Trail	6.4			•				



OPEN FOR *Playtime*

TUBING

Smoky Mountain River Adventures & Smoky Mountain Tubing,
Sylva & Cherokee

Deep Creek Tubing,
Bryson City

MINI GOLF

Fontana Village Resort,
Pool & mini golf.
Fontana Dam

GEM MINING

Mason's Ruby & Sapphire Mine, Sheffield Gem Mine, Gold City Gem Mine, Rose Creek Gem Mine, Primitive Outback, Kayaking & Gem Mining, Andy's Trout Farm, Jackson Hole Trading Post & Gem Mine, Deep Creek Gem Mine,
Franklin, Highlands, Bryson City & Murphy

RAILROAD

Great Smoky Mountains Railroad,
Bryson City

TROUT FISHING

Andy's Trout Farm and Scaly Mountain Outdoor Center,
Franklin & Highlands

BISON VIEWING

Buffalo Creek Vacations,
Clyde

WINTER ACTIVITIES

Highlands Outpost
Summer & Winter tubing, ice skating.
Highlands

ARCADE/BOWLING

Harrah's Cherokee & Valley River Casino Resorts (Ultra Star Multi-tainment Center)
Arcade & bowling.
Cherokee & Murphy

Fontana Village Resort,
Arcade & bowling.
Fontana Dam

WHITewater RAFTING

Nantahala Outdoor Center, Carolina Outfitters, Rolling Thunder, Wildwater and Brookside,
Bryson City. Ages 7+.

ZIPLINING

Nantahala Outdoor Center, Wildwater and Highlands Aerial Park,
Bryson City & Highlands



OPEN FOR *Must-Do Adventures* IN THE NORTH CAROLINA GREAT SMOKIES

TAKE A TRIP ON THE GREAT SMOKY MOUNTAINS RAILROAD

Departing from historic Bryson City, this scenic excursion railroad has a variety of trips and packages for any kind of adventure. Take in the fresh air while riding on open-air gondola car trips, or enjoy a gourmet meal in a first-class dining car during the food-friendly trips. • gsmr.com

BOOK AN ADVENTURE WITH NANTAHALA OUTDOOR CENTER

Named "One of the Best Outfitters on Earth" by National Geographic Adventure, Nantahala Outdoor Center offers a range of adventures to get your family enjoying the outdoors. Choose from family-friendly outdoor adventures including Nantahala River whitewater rafting, a new Mountaintop Zip Line Tour in the Nantahala Gorge and a family-friendly Zip Line Adventure Park. • noc.com

FEEL THE INFLUENCE OF CHEROKEE

Located in the heart of Western North Carolina, Cherokee is a culture, a people and a sovereign nation. Take a mud-spattering romp through the nearby Great Smoky Mountains, while hearing the creation legend in the Museum of the Cherokee Indian, or watch the profound outdoor drama "Unto These Hills." See how the Cherokee lived two and a half centuries ago at the Oconaluftee Indian Village, an authentic working village with dwellings, residents and artisans right out of the 1760s. Plan. Play. Visit. And discover at visitcherokeenc.com



COUNT YOUR LUCK AT HARRAH'S CHEROKEE CASINO AND RESORT

A casino, luxury hotel with fine dining options, world-renowned spa and event center, Harrah's Cherokee Casino and Resort offers a luxurious experience within the North Carolina Smoky Mountains. The new Harrah's Cherokee Valley River Casino & Hotel in Murphy offers many of the same amazing amenities with over 60,000 square feet of gaming. Book your stay at caesars.com/harrahs-chokeee

MOSEY ALONG THE BLUE RIDGE PARKWAY OR NC SCENIC BYWAYS

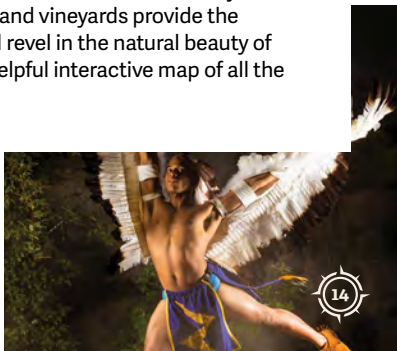
Named "America's Favorite Drive", the Parkway—a National Scenic Byway—offers 469 miles connecting the Great Smoky Mountains National Park in North Carolina to the Shenandoah National Park in Virginia. If you need to stretch your legs, there are ample recreational opportunities for all ages and abilities just off the road. However long you drive, make sure to get out and personally witness the natural beauty of one of the world's most diverse displays of flora and fauna. • blueridgeparkway.org

North Carolina's 62 scenic byways allow travelers to experience some of the state's history, geography, and breathtaking views while avoiding the faster pace and commercial areas found along major highways. • ncdot.gov/scenic

UNWIND AT BREWERIES AND WINERIES

The explosion of craft breweries is happening all over the Smokies! Craft breweries are now operating in Andrews, Bryson City, Cashiers, Cherokee, Franklin, Hayesville, Highlands, Murphy, Sylva and Waynesville, with more opening all the time. Travelers could spend days exploring each small town's unique breweries and never visit the same place twice. • avlbrewers.com

While you wind your way through the mountains, take some time to explore the scenic beauty and taste the fruits of our vineyards. Western North Carolina's wineries and vineyards provide the perfect setting to imbibe, relax and revel in the natural beauty of this region. Visit ncwine.org for a helpful interactive map of all the wineries in the region.





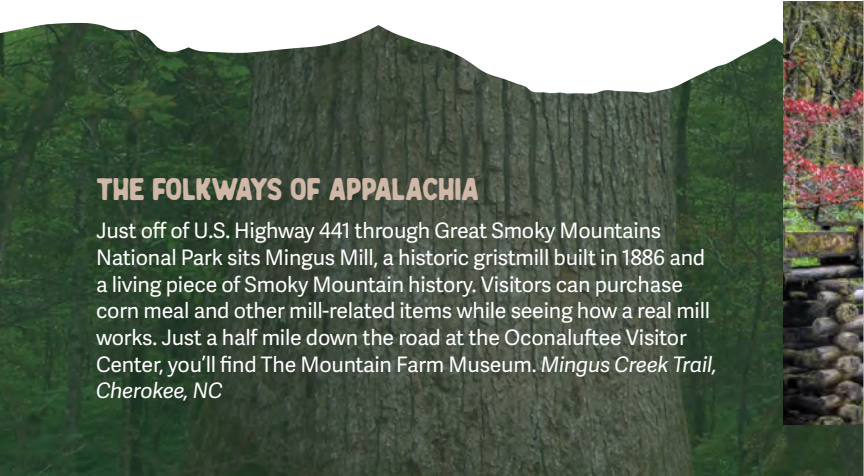
OPEN TO EXPLORE *National Parks & National Forests*

BLUE RIDGE PARKWAY

The most visited unit of the National Park System, the Blue Ridge Parkway is known for its stunning views, abundant hiking trails, picnic areas, campsites and informational exhibits. Named "America's Favorite Drive," the Parkway offers 469 miles connecting the Great Smoky Mountains National Park in NC to the Shenandoah National Park in VA and is definitely worth the trip. Experience the world's most diverse display of flora and fauna. blueridgeparkway.org

GREAT SMOKY MOUNTAINS NATIONAL PARK

Straddling NC and TN, the Great Smoky Mountains National Park encompasses over half-a-million acres, making it the largest national park in the East. It has more species of plants, animals and insects than anywhere else in the world, rivaling even the rainforests. Hike on one of the more than 900 miles of trails in the park. Locals agree that the NC side of the park is considered more pristine and tranquil and is less heavily used than the TN side. nps.gov



THE FOLKWAYS OF APPALACHIA

Just off of U.S. Highway 441 through Great Smoky Mountains National Park sits Mingus Mill, a historic gristmill built in 1886 and a living piece of Smoky Mountain history. Visitors can purchase corn meal and other mill-related items while seeing how a real mill works. Just a half mile down the road at the Oconaluftee Visitor Center, you'll find The Mountain Farm Museum. *Mingus Creek Trail, Cherokee, NC*



NANTAHALA NATIONAL FOREST

Nantahala National Forest is the largest of the four national forests in North Carolina, covering just over half-a-million acres. There are more than 27,000 acres of designated wilderness found in its hills, including Ellicott Rock, Joyce Kilmer-Slickrock and the Southern Nantahala Wilderness.

The Nantahala National Forest is renowned for whitewater rafting, mountain biking, camping and hiking. World-renowned trails including The Appalachian Trail, Bartram's Trail and the Mountains-To-Sea Trail all meander through the forest. **fs.usda.gov**

PISGAH NATIONAL FOREST

The Pisgah National Forest began as a part of George Vanderbilt's private estate. The area west of Vanderbilt's Asheville Biltmore Estate was sold to the federal government after his death in 1914 and became the first tracts of the now half-million-acre Pisgah National Forest. Today, Pisgah is home to the Shining Rock Wilderness Area, Max Patch, the Harmon Den Bear Preserve, The Cradle of Forestry and Sliding Rock. • **fs.usda.gov**





OPEN FOR MAKING *Family Memories*

FISHING

Nationally recognized for native and stocked trout, fishermen are happy to explore the many lakes, creeks and rivers that run through the area. Cherokee is a former site of the U.S. National Fly Fishing Championships and offers some of the best fishing in the U.S. You'll fall in love with the beautiful freestone streams stocked with trout that flow through Qualla Boundary. Jackson County has a fly-fishing trail that is sure to amaze, considering it was the first of its kind in the country. If that isn't enough, now Swain County has one too and Bryson City is home to the Fly Fishing Museum Of the Southern Appalachians!

Nonresident and resident fishing permits and licenses can be purchased online. Special tribal fishing permits can be acquired to fish on the Qualla Boundary of the Eastern Band of Cherokee Indians at fishcherokee.com. State fishing licenses can be acquired at ncwildlife.org/licensing.

GEM MINING

Many gem mines in the region offer a wonderful experience as adults and children sift through locally mined soil to try and uncover valuable stones. Deep Creek Tubing/Campground, Bryson City; Sheffield Gem Mine, Franklin; Gold City Gem Mines, Franklin; Jackson Hole Gem Mines, Highlands; Mason's Ruby and Sapphire Mine, Franklin; Rose Creek Mine, Franklin; Primitive Outback Kayaking & Gem Mining, Otto; and Andy's Trout Farm, Otto all offer an unforgettable experience.

GOLFING

Gentle slopes and woods-rimmed fairways beckon pros and amateurs alike to indulge in a relaxing, scenic game at Sequoyah National Golf Club, NC and Sky Valley Country Club, GA.

HORSEBACK RIDING

Whether it's an all-day ride with a picnic or a shorter excursion, children and adults of all ages will enjoy a guided horseback-riding trip through the mountains. To book a trip, check out one of the many operating stables in the Smokies, including Arrowmont Stables & Cabins, Cataloochee Ranch, Chunky Gal Stables and Smokemont Stables.

MOTORCYCLING

For a winding trip through the mountains, take a tour on The Dragon, which is considered **"THE DESTINATION"** for thousands of motorcycle and sports car fans throughout the spring, summer and fall. Along your way, stop by Deal's Gap Motorcycle Resort for a bite to eat, shop or a place to stay. Motorcycle sales and services are available at Smoky Mountain Steel Horses in Waynesville.

MOUNTAIN BIKING AND HIKING TRAILS

Whether you want short or long, difficult or easy, trees or waterways, there are mountain biking and hiking trails for every adventure, and then more trails on top of that.

RAFTING AND KAYAKING

The North Carolina Great Smokies are known for whitewater rafting. Named "One of the Best Outfitters on Earth" by National Geographic Adventure, Nantahala Outdoor Center offers a wide array of adventures for everyone in your group. If you're looking for tamer, family-friendly river experiences, the Tuckasegee River and the Little Tennessee River are perfect places to get children out on the water. There are plenty of companies that book trips on these rivers, including Smoky Mountain River Adventures in Whittier and Primitive Outback Kayaking & Gem Mining in Otto. For more exciting rafting experiences, check out Brookside, Carolina Outfitters, Rolling Thunder and Wildwater.

SNOW TUBING


Downhill tubing in the North Carolina Smokies offer breathtaking mountain views. Celebrate the outdoors and have more fun than ever this winter by snow tubing and ice skating at Highlands Outpost. The town of Highlands has an ice skating rink at Kelsey-Hutchinson Park.

WATER TUBING AND PADDLEBOARDING

One of summer's sweetest pleasures in the North Carolina Smokies is floating along the cool mountain waters. No tube? No worries. All four rivers have companies to outfit you with a tube. Some more popular spots are Deep Creek Tubing in Bryson City; Smoky Mountain Tubing on the Oconaluftee River in Cherokee; Smoky Mountain Adventures in Whittier; on the Tuckasegee River and Primitive Outback on the Little Tennessee River south of Franklin in Otto. If standing is more your thing, try the increasingly popular paddleboarding.

ZIP LINING

If you've taken the time to see the forest from the trails, perhaps it's time to get a bird's-eye view. Three popular spots are the Nantahala Outdoor Center in Bryson City; Wildwater Nantahala Gorge Adventure Center in Wesser and the Highlands Aerial Park at Scaly Mountain.



OPEN FOR *Outdoor Experiences*

THE COWEE MOUND

In 2007, the Eastern Band of Cherokee Indians purchased 70 acres along the Little Tennessee River that included the historic Cowee Mound and Village Site, thought to date from approximately 600 A.D. The transaction was made possible with assistance from Mainspring (then the Land Trust for the Little Tennessee) and the N.C. Clean Water Management Trust Fund. There is a conservation easement on the property that permanently protects its conservation values and prevents commercial and residential development.

The council house of the Cherokee town of Cowee was located on this mound in the 18th century, when the town of Cowee served as the principal diplomatic and commercial center of the mountain Cherokee. Cowee is considered one of the most significant archaeological sites of the Mississippian period in North Carolina, where the presence of agriculture on the bottomlands dates back at least 3,000 years.

Located in Cowee Historical District on Highway 28, Franklin, NC.



THE NIKWASI MOUND

Franklin's oldest structure has become its newest tourist attraction. Driving through town on Business U.S. 441, it's easy to overlook Nikwasi Mound, especially if traffic is heavy. The mound sits between the northbound and southbound lanes, marked only by two historical markers. Once, it was the center of one of the Cherokees' most important towns, which encompassed some 100 acres. It first appears on maps in 1544 but could have existed for centuries before that.

It was the site of treaty talks with South Carolina in 1727. Talks presumably were held in a council house atop the mound. At that time, the village had some 150 residents. Further negotiations were held in 1730, as noted on the older and smaller of the two markers.

Located on Main Street in downtown Franklin, NC.



OPEN TO TRAVEL ALONG *Scenic Byways*

Follow the byways, and you will see some of the most breathtaking scenery in the North Carolina Great Smokies. Designated specifically to give visitors and residents a chance to experience a bit of North Carolina history, geography and culture, they also raise awareness for the protection and preservation of area treasures. For more information, visit ncdot.gov/scenic to guide your tour along the region's Scenic Byways.

1 CHEROHALA SKYWAY

Esquire magazine said, "It's like driving through a car commercial." Connecting the Cherokee National Forest to the Nantahala National Forest, this clean, smooth highway encourages you to open up your sports car or pause your RV for a sandwich and the beautiful sights. And the skyway vs. byway bit? Once you drive it, you'll understand.

20 miles • 45 minutes • Graham County

2 FOREST HERITAGE SCENIC BYWAY

Take off on U.S. 276 North from Brevard on the Forest Heritage Scenic Byway to see the Cradle of Forestry, the Pink Beds and Shining Rock Wilderness.

65 miles • 2 hours

Haywood, Transylvania and Jackson Counties

3 INDIAN LAKES SCENIC BYWAY

Where NC 28 meets U.S. 129 near the Tennessee border, fans of crystalline lakes (especially those featuring Indian names) will find their calling. Just leave what's known as "The Dragon" and discover the first landmark, Fontana Dam. From there, you'll have a hard time watching the road as you pass the likes of Fontana Village and Stecoah on the way to the byway's meandering end.

57 miles • 1.5 hours

Swain, Graham and Cherokee Counties



4 NANTAHALA BYWAY

The Cherokee used “Nantahala” to mean “Land of the Noonday Sun.” Why noonday? Well, likely for the steep walls that frame the Nantahala Gorge from the morning sun, an impressive site you’ll tour as part of this swirling byway. Nearby, the Nantahala River has become legendary for its whitewater. Just depart from Marble, head east and don’t stop until you pass Wesser.

43 miles • 1.5 hours

Cherokee, Graham, Jackson and Swain Counties

5 SMOKY MOUNTAIN SCENIC BYWAY

Travel through the Great Smoky Mountains National Park, renowned for its diverse plant and animal life. A trip along this road puts you in close proximity to some of North Carolina’s most captivating wildlife, and gives a glimpse of the Southern Appalachian pioneer culture that once dominated the region. Just hop off the Blue Ridge Parkway onto U.S. 441 near the Qualla Boundary of the Cherokee Indian Reservation and head north into Tennessee.

16.5 miles • 35 minutes • Swain County

6 WATERFALL BYWAY

Strangely powerful or eerily tranquil, waterfalls do have a way of casting a spell. If you happen to be a fan, this is your byway. Winding 98 miles and featuring more than 200 distinct waterfalls, it begins at U.S. 64’s intersection with NC 215. Where it ends is likely somewhere far deeper within you.

98 miles • 3.5 hours

Clay, Jackson, Macon and Transylvania Counties

7 WHITEWATER WAY

Quick: You have three guesses as to what you’ll encounter on this scenic byway. The aptly named Whitewater Way is named for Whitewater Falls, which is the highest waterfall east of the Rockies. Take NC 281 and hike the many trails leading to spectacular rushing water. Bathroom breaks are a must.

9 miles • 20 minutes

Transylvania and Jackson Counties

OPEN FOR *Chasing Waterfalls*

	WATERFALLS	TOWN	COUNTY
1	Big Laurel Falls & Mooney Falls	Otto	Macon
2	Bridal Veil Falls	Highlands	Macon
3	Bust-Yer-Butt Falls	Highlands	Macon
4	Carlton Falls	Sapphire	Jackson
5	Chasteen Creek Falls	Cherokee	Swain
6	Courthouse Falls	Balsam Grove	Transylvania
7	Cullasaja Falls	Franklin	Macon
8	Dry Falls	Highlands	Macon
9	Frolictown Falls	Sapphire	Jackson
10	Glen Falls	Highlands	Macon
11	Gina Falls	Sylva	Jackson
12	Granny Burrell Falls	Sapphire	Jackson
13	Greenland Creek Falls	Sapphire	Jackson
14	High Falls	Glenville	Jackson
15	Indian Creek Falls	Bryson City	Swain
16	Jawbone Falls	Glenville	Jackson
17	Juney Whank Falls	Bryson City	Swain
18	Leatherwood Falls @ Fires Creek	Hayesville	Clay
19	Looking Glass Falls	Brevard	Transylvania
20	Mingo Falls	Cherokee	Qualla Boundary

WATERFALL NUMBERS CORRESPONDS WITH FOLD-OUT MAP

DESCRIPTION

Easy 0.5-mile trail, 30-foot cascading falls, tumbles into pool.

Visible from U.S. 64, waterfall drops 45 feet, can walk behind.

Popular swimming hole, can jump off a boulder.

In Panthertown Valley, variety of photo ops.

Great stop for campers staying at Smokemont Campground.

Hike 1/2 mile, pool at base is deep, water is clear & cold.

250 foot falls, cascades viewable from road, safest approach on Franklin side.

Also known as Upper Cullasaja Falls, 65-foot fall, NW of Highlands.

15-foot waterfall, vertical drop, great stop on Great Wall Trail.

One-mile trail hike is steep & rough but consist of three 60 foot falls each.

In Pinnacle Park, near urban area, 35-foot upper drop with cascades below.

Kid-friendly-sliding, swimming, sunbathing @ beach, large pool.

Steep cascade drops on boulder ledges, cascades into deep pool.

Also known as Cullowhee Falls, has two-section free fall over cliff.

Easy 1.6 mile round trip hike allows you to enjoy two beautiful waterfalls.

Small island downstream & a pool, picturesque spot.

Divided in upper & lower, both viewed from footbridge, 90 foot drop.

75-foot falls visible from picnic area. Paved trail, great for kids!

Roadside gorgeous views, just off Blue Ridge Pkwy, near Brevard.

120 foot high, tallest in the southern Appalachians.



	WATERFALLS	TOWN	COUNTY
21	Moses Creek Falls	Cullowhee	Jackson
22	Mouse Creek Falls	Waynesville	Haywood
23	North Shoal Creek Falls	Murphy	Cherokee
24	Rainbow Falls	Brevard	Transylvania
25	Rock Slab Falls	Cherokee	Swain
26	Rough Butt Creek Falls	Cullowhee	Jackson
27	Rufus Morgan Falls	Franklin	Macon
28	Sassafras Falls	Robbinsville	Graham
29	Secret Falls	Highlands	Macon
30	Schoolhouse Falls	Sapphire	Jackson
31	Silver Run Falls	Cashiers	Jackson
32	Sliding Rock	Brevard	Transylvania
33	Soco Falls	Maggie Valley	Jackson
34	Tom Branch Falls	Bryson City	Swain
35	Toxaway Falls	Brevard	Transylvania
36	Whitewater Falls	Cashiers	Jackson
37	Yellow Creek Falls	Robbinsville	Graham

WATERFALL NUMBERS CORRESPONDS WITH FOLD-OUT MAP

DESCRIPTION

Calling all daredevils: 100-foot, a bit difficult to see, steep.

Tiered water cascades, swimming, popular & beautiful.

Stunning 30' tall, cascades over rock layers, offers tranquility.

Exceptionally beautiful, 150 ft. enormous falls-near Gorges St. Park.

Gentle waterfall, sparkling bands of quartz.

30-foot waterfall falls, small pool and rocks coated in moss.

West of Franklin-65 foot falls, 1 mi. hike, family friendly.

This is an interior trail with a noted fishing spot.
Moderate to Strenuous.

50-foot Hidden Oasis, (known: Big Shoals Falls) cascades
into serene pool.

Best in Summer, 18-foot falls of Panthertown Valley,
a mix of cascades.

200 yard trail, 25-foot falls, observation points.

Near Brevard, sliders ride water 60-foot flat, 8 ft. pool.

5-minute trail, double waterfall-edge of Cherokee Indian Reservation.

Wide path, 80-ft. falls, many benches to admire the falls.

150-foot falls, seen by car, US64 E. near Rosman.

Highest falls E. of Rockies, falling 811 feet-Nantahala Nat'l Forest.

Gorgeous falls-Nantahala Nat'l Forest, easy trail, swimming hole.

ncwaterfalls.info
visitsmokies.org/waterfalls

Capturing Hope:

**A PHOTOGRAPHER'S
JOURNEY THROUGH
HURRICANE
HELENE'S AFTERMATH**

When Hurricane Helene ravaged North Carolina, it left devastation in its wake across 27 counties. However, in an unexpected turn of events, the seven westernmost counties of the Smokies region—highlighted in this book’s fold-out map—emerged relatively unscathed, with damages that could be repaired. Meanwhile, our neighbors to the east faced a far more dire situation. Many locals from the Smokies region stepped up to help, embodying true heroism. We had the privilege of sitting down with one of these heroes to hear their story.

Eric Haggart, marketing director for the Nantahala and Franklin Tourism Development Council and a seasoned photographer, found himself uniquely positioned to document the region’s response to the disaster. His lens captured not just the physical aftermath, but the indomitable spirit of the community.

We sat down with Eric to discuss his experiences during and after Hurricane Helene, his motivations, and his journey.

ON THE FRONT LINES

Q: *Eric, can you describe your initial experience during Hurricane Helene and how your perspective changed as you ventured out to more affected areas?*

A: “Initially, I responded to the areas in and around Gerton and Bat Cave, NC on search and rescue operations. Utilizing my Thermal Drone, as well as my other drones, I was able to plug in with the Gerton VFD and assist with river sweeps and reconnaissance that would have taken much more manpower than was available at the time.

Because communications systems were down, most of the information we were receiving about damage and missing people was anecdotal and sometimes not accurate. Searching for the missing and survivors was intense and difficult due to the roads being damaged and, in many cases, completely washed away.

As I came to interact with survivors, some who had lost everything, I began to see the strength and courage of the human spirit. Their positivity in the face of all the destruction was an inspiration to me and so many others who came into the area to help.”

COMMUNITY RESILIENCE

Q: *How has this experience affected your perspective on community resilience in Western North Carolina?*

A: "I have known for a long time that most folks in this area are resilient. They never fail to show up for one another in their time of need. Helene was no exception. Seeing it up close and personally though, showed me the true strength of those affected.

Early on in Gerton, I was sitting on the concrete in front of the Volunteer FD waiting for another tasking, when a woman came up with a plate of food and her very large but very gentle dog. I offered to get her a chair. She politely declined and said she just wanted to sit here (on the concrete) with other people and talk.

I asked how she was doing, and her response was that of someone who had been through a lot. She explained how her house had been damaged but that she was still able to stay in it. She also said that thanks to Starlink and a generator, she was able to sit down and watch an episode or two of her favorite show.

When I followed up with the only words I could think of at that moment, how having that ability was providing her with just a taste of normalcy in all of the chaos, she began to tear up and said 'exactly'. She followed that up with how she's not going anywhere and that all her friends who survived and lost so much more were not going anywhere either. Having that mindset while in the middle of the worst disaster to have ever hit the area was inspiring."

BALANCING RECOVERY AND TOURISM

Q: *As someone deeply involved in tourism and marketing for the area, how do you see the balance between supporting recovery efforts and encouraging visitors to return to the region?*

A: "Immediately following the storm, it was important for the worst hit areas to be shut down and all the efforts focused on search and rescue. In the areas surrounding the worst hit locations, we were focused on being staging areas for the massive influx of volunteers making their way into the hardest hit spaces. Obviously, tourism was not front of mind at that point.

As the weeks pressed on though, many surrounding areas that were not affected by Helene were wrestling with how to bring their tourism messaging back online in a way that was also sensitive to the worst hit locations. One of the ways I sought to utilize tourism was to express how visiting an area close by but not badly affected by the storm was in fact supporting recovery efforts.

By having these visitors come into the region, their dollars spent were contributing to small businesses, employees, lodging, and restaurants just to name a few. The money they were spending was allowing people to pay their bills, feed their families, and for businesses to remain open.

Once the worst hit areas of the region began to welcome visitors, it became even more important to promote tourism. I spent much of the month of January traveling to Atlanta, Miami, and New York City advocating for tourism at trade shows and with travel writers. Not just for Franklin and Nantahala, but also fielding questions about how recovery is coming along for the worst hit locations. Tourism is an integral part of the recovery of the area and getting us back stronger.”

SHARING THE JOURNEY

Q: *How can people view/purchase your photography?*

A: “Folks can view my photography on my social media pages—they are Eric Haggart Imagery both on Facebook and Instagram. I invite people to follow along my photographic journey and if you see a photo that you would like to purchase, please reach out to me directly on those pages or connect with an email to ***hagman23@live.com***”

As the Smokies region continues to recover, Haggart’s work serves as a powerful reminder of the strength found in community bonds. His photographs not only document history but also play a crucial role in the region’s economic recovery, showing the world that the Smokies are open for business.

In the end, Hurricane Helene may have altered the landscape, but it couldn’t dampen the spirit of Western North Carolina. Through Haggart’s lens, we see a community not just surviving, but thriving—a testament to the power of unity in the face of nature’s fury.

VisitSmokies.org for the full interview with Eric Haggart

Big thank you Eric Haggart for this story and for sharing his photography throughout this guide.

Open to Experience **BRYSON CITY**

42 MILES  **FROM** FRANKLIN

31 MILES  **TO** FONTANA



10 MILES TO CHEROKEE, EASTERN CHEROKEE RESERVATION

GATEWAY TO GREAT SMOKY MOUNTAIN NATIONAL PARK AND PART OF APPALACHIAN TRAIL

3 VIBRANT RECREATION AREAS IN BRYSON CITY:

- ★ **DEEP CREEK** – Known for Camping, Hiking, Mountain Biking, Picnicking, Tubing & Waterfall: Tom Branch Falls
- ★ **THE NANTAHALA GORGE** – World-Class Whitewater Destination
- ★ **TSALI RECREATION** – One of the Finest Mountain Biking Trail Systems in the country.

HIDDEN GEMS AND POPULAR ATTRACTIONS:

- ★ **THE ROAD TO NOWHERE** – Find out the story behind “The Road to Nowhere.” explorebrysoncity.com/things-to-do/great-smoky-mountains-national-park/road-to-nowhere/
- ★ **TUBING ON DEEP CREEK** – Family Fun for the entire day! Experience the thrill of riding an Inner Tube down the rapids in the GSM National Park. Tubing Season: **Memorial Day Weekend through Labor Day.**

GREATSMOKIES.COM ★ EXPLOREBYRSONCITY.COM

AGRITOURISM

Darnell Farms

Family Fun farmer's market,
80 acres, riverside camping,
events. 8am–7pm, Sun
9am–6pm
2300 Governors Island Road
Bryson City, NC 28789
(828) 488-2376
Darnellfarms.com

**Swain County
Farmer's Market**

Organic produce, plants, honey,
jams as well as array of local
crafts. 9am to 2pm on Fridays
from May through October
117 Island St.
Bryson City, NC 28713
828-488-7857
[facebook.com/
swaincountyfarmersmarket](https://facebook.com/swaincountyfarmersmarket)

BLUEWAYS

The Nantahala River

A popular spot
offering river rafting
and kayaking
through family-
friendly rapids. It
features eight miles of Class
II rapids before splashing
through the exciting Class III
whitewater of Nantahala Falls.



CULTURAL MUSEUM

Appalachian Rivers Aquarium

Appalachian Rivers Aquarium
is a small, native species
aquarium on the banks of the
Tuckasegee River in downtown
Bryson City.
117 Island St.
Bryson City, NC 28713
828-488-7857
explorebrysoncity.com

**Fly Fishing Museum of the
Southern Appalachians**

Exhibits/videos of legendary
"Stream Blazers," evolution of
rods/reels, knots, fly-tying, gear,
gamefish, history.
117 Island St.
Bryson City, NC 28713
828-488-7857
flyfishingmuseum.org

**Smoky
Mountain Train
Museum**

Catch the
spirit of model
railroading. Museum ranked in
top ten in the United States.
GSMR-owned and operated.
100 Greenlee St.
Bryson City, NC 28713
828-488-5200 • 866-872-4681
gsmr.com/smoky-mountain-trains-museum

**Swain County
Heritage Museum**

Photos, exhibits, video about
life of early settlers in small
mountain communities.
Children's activity area.
2 Everett St.
Bryson City, NC 28713
828-488-7857
swainheritagemuseum.com

DINING

Big Wesser

Enjoy a hearty
meal at the
intersection of
the Appalachian Trail and the
Nantahala River. Pets welcome.
13077 Hwy 19 W
Bryson City, NC 28713
828-488-7174 • noc.com

**River's End
Restaurant**

Fuel up for a day
of adventure at
Nantahala's Gastropub, where
every seat is a riverside seat!
13077 Hwy 19 W
Bryson City, NC 28713
828-488-7172 • noc.com

**Fryemont Inn**

Full country
breakfast, four-course dinners.
Prime rib, lamb & trout, full bar,
fine wines.
245 Fryemont St.
Bryson City, NC 28713
828-488-2159 • 800-845-4879
fryemontinn.com



DINING

Pop-N-Jacks Gourmet Popcorn

If you haven't tried Pop-N-Jacks gourmet popcorn, you don't know Jack.

225-B Everett St.
Bryson City, NC 28713
828-620-3931
pop-n-jacks.com

EVENT/WEDDING

McKinley Edwards Inn

Specializing in intimate weddings to make your special day perfect. On-site coordinator.

Catering available.
208 Arlington Ave.
Bryson City, NC 28713
828-488-9626
mckinleyedwardsinn.com

McKINLEY
Inn
EDWARDS

GEM MINES & SHOPS

Nantahala River Gem Mining

Family gemstone mining adventures near Nantahala River and Bryson City. Find rubies, emeralds, sapphires. Call to RSVP during Jan-March. | 12 Country Rd
Bryson City, NC 28713
(828) 736-0785

LODGING

Hemlock Inn

Hemlock Inn is best known for three things: genuine hospitality, an unbeatable mountain view, and the mealtime experience. Come, disconnect with us.

911 Galbraith Creek Rd
Bryson City, NC 28713
(828) 448-2885
hemlockinn.com

Long View Resort

Long View Resort in Bryson City offers a Nordic-themed retreat with stunning Appalachian views and personalized concierge services. Enjoy a perfect mountain escape.

101 Longview Pass
Bryson City, NC 28713
(828) 273-7537
longviewresort.com

FRYEMONT INN



NORTH CAROLINA'S HISTORIC INN OVERLOOKING
GREAT SMOKY MOUNTAINS NATIONAL PARK

Settle in for a While!



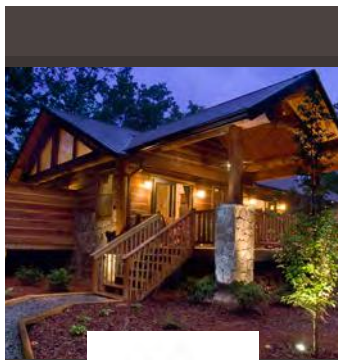
245 FRYEMONT STREET
BRYSON CITY, NC 28713
FRYEMONTINN.COM • 828-488-2159
LISTED IN THE NATIONAL REGISTER
OF HISTORIC PLACES

Rest Historic main lodge - fireplace
suites & cabin - includes
Relax 4-course dinner & full country
breakfast - fireside bar -
Rejuvenate secluded swimming pool

FIRST TIME VISITORS GET

\$40 Off

YOUR STAY OF TWO NIGHTS OR MORE, USING
PROMO CODE "FIRST" ONLINE.



Bryson City, NC
Reservations: 828.222.0802
stonewoodcabins.com





LODGING

Sky Ridge Yurts

Ready to break out of the regular cabin routine? Come experience Sky Ridge.

Basecamp Smoky Mountains

Luxury accommodations w/ guided immersive nature experiences. 1 and 3 bedroom options in beautiful resort with hot tubs, walking trails and fire pits.

1610 Needmore Rd

Bryson City, NC 28713

(828) 809-1921

basecampsmokymountains.com

Stonewood Cabins

Luxury vacation home rental agency with properties outside of Bryson City, including Watershed Resort.

33 Island Street

Bryson City, NC 28713

828-222-0802

Stonewoodcabins.com



Lakeview at Fontana

Soul-nurturing spaces where guests can disconnect from devices and reconnect to nature is the mission for Lakeview at Fontana. Widely known for our picturesque Treetop Soaking Cabanas that are designed for pure relaxation.

171 Lakeview Lodge Drive

Bryson City, NC 28713

800-742-6492

Lakeviewatfontana.com

Fryemont Inn

Historic inn on national register. Breakfast and dinner included, restaurant, bar, swimming pool, fireplace, suites.

245 Fryemont St.

Bryson City, NC 28713

828-488-2159 • 800-845-4879

fryemontinn.com



McKinley Edwards Inn

Charming historical inn with stunning views of the Smoky Mountains, clean, comfortable rooms, delicious breakfast.

208 Arlington Ave.

Bryson City, NC 28713

828-488-9626

mckinleyedwardsinn.com

Sleep Inn

One mile from Great Smoky Mountains Railroad. Minutes from Cherokee Indian Reservation, and Harrah's Cherokee Casino.

500 Veterans Blvd.

Bryson City, NC 28713

828-488-0326

sleepinbrysoncitync.com

NOC Bryson City Cabins & Bungalows

Mountainside cabins lodging just steps from rafting, biking, hiking, riverside dining, and the Outfitter's Store.

13077 Hwy 19 W

Bryson City, NC 28713

828-785-5018 • 800-232-7238

noc.com



ALL ABOARD!

Scenic Excursions **DIESEL & STEAM LOCOMOTIVES!**



BRYSON CITY, NC

www.GSMR.com | 800.872.4681

LODGING

Nantahala Cabins, Inc.

Your Nantahala getaway. Cabin rentals and adventure planning. We specialize in making memories.
580 Nantahala Cabins Ln.
Bryson City, NC 28713
828-488-1622
nantahalacabins.com



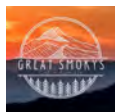
Calhoun House Inn & Suites

Affordable, 4 and 5-room luxury suites, private baths, private entrances, A/C, king beds, full kitchens, WiFi, HBO.
110 Bryson Ave.
Bryson City, NC 28713
828-788-0505
ed@calhounhouse.com
calhounhouse.com



Great Smokys Cabin Rentals

We have vacation cabins for everyone, hot tubs, game rooms, spectacular views, pets welcome.
1181 Main St.
Bryson City, NC 28713
828-488-4630 • 800-655-9771
gscrnc.com



Two Rivers Lodge

American Family Owned & Operated motel, cabins, kitchenettes, porches, pool, riverside, park, bonfire, pavilion, grills, fishing.
5280 Ela Rd.
Bryson City, NC 28713
828-488-2284
tworiverslodgenc.com

Watershed Cabins

Vast selection of vacation rentals: simple woodsy cabins to luxury lakefront homes. Pet friendly.
162 Everett St.
Bryson City, NC 28713
888-604-3075
watershedcabins.com

THE
ADVENTURE CAPITAL
— OF THE SMOKIES —

BEST ADVENTURE TOUR OPERATOR
USATODAY
10 BEST
READERS' CHOICE
2024
NANTAHALA OUTDOOR CENTER



NANTAHALA OUTDOOR CENTER

Bryson City Adventure Resort

River Rafting, Zip Lining, & Biking
Shopping & Dining • Cabins & Lodging

noc.com • 800.232.RAFT

CAMPGROUND**Brookside Campground & Rafting**

Whitewater rafting available from campground. Creekside sites, country store.

764 U.S. Hwy 19
Nantahala, NC 28781
828-321-5209 • 800-848-7238
brooksiderafting@gmail.com
brooksiderafting.com

Gorgeous Stays

"Glamppground" nestled in the scenic Nantahala Gorge. 11 units including fun-themed tiny homes, huge safari tents, a yurt, and more.

11044 Hwy 19 W
Bryson City, NC 28713
828-421-2282
www.gorgeousstays.com

Grumpy Bear Campground & Gem Mine

Cozy campground with gem mining, cabins, tepees, fire pits, Wi-Fi, and waterfront sites.

2030 Old River Rd.
Bryson City, NC 28713
grumpybearcampground@gmail.com
grumpybearcampground.com

OUTDOOR ACTIVITY**Rolling Thunder River Company**

The preferred rafting company for over 40 years. Family-friendly trips daily during season. Book online.

10160 Hwy 19 W
Bryson City, NC 28713
800-408-7238
rollingthunderriverco.com

Wildwater Nantahala Gorge Adventure Center

Fully guided, guide assisted, and rental trips on Nantahala, Ocoee, Big Pigeon, and Chattooga Rivers.

10345 Hwy 19 W
Bryson City, NC 28713
866-319-8870
wildwaterrafting.com

Great Smoky Mountains Railroad

Join us on board the Great Smoky Mountains Railroad for a fantastic journey! 45 Mitchell St.

Bryson City, NC 28713
828-586-8811 • 800-872-4681
gsmr.com

NOC Outdoor Adventure

Enjoy 500-acres of outdoor adventure from rafting, biking, zip lining, wilderness and paddling courses, and more! Pets welcome on campus.

13077 Hwy 19 W
Bryson City, NC 28713
800-232-RAFT • noc.com

Fly Fishing the Smokies

Premier guide service offering all-inclusive guided fly fishing adventures in the beautiful Smoky Mountains.

157 Everett st
Bryson City, NC 28713
(828) 421-6378
flyfishingthesmokies.net/
bryson-city/
facebook.com/FlyFishingtheSmokies

Indian Creek Falls

An easy one-mile hike from Deep Creek Campground in the Great Smoky Mountains National Park brings you to this gorgeous 60-foot waterfall. www.nps.gov/grsm/planyourvisit/indian-creek-toms-branch-falls.htm

**Appalachian Trail to Charlie's Bunion**

4 miles, moderate/difficult Trailhead: Newfound Gap parking area. This four-mile stretch offers spectacular views of the Smokies. appalachiantrail.org

**Nantahala Byway**

The Nantahala Byway runs from Whittier to Murphy via the Nantahala Gorge. 43 miles • 1.5 hours





Lazy Bear General Store

104 Front St ☼ Dillsboro, NC 28725 ☼ LazyBearTrading.com



Cheddar Box Country Store

225a Everitt St ☼ Bryson City, NC 28713 ☼ LazyBearTrading.com

OUTDOOR ACTIVITY

Deep Creek

Fishing, waterfalls, hiking and horse trails, tubing, picnicking, and campground open May–October.



EXCURSION

Appalachian Adventure Rentals

We are Western NC's one and only Polaris Adventures Outfitter! We offer Polaris Slingshots and Polaris RZR rentals.
944 Main St.
Bryson City, NC 28713
(828) 269-8088
appadventurerentals.com

Wildwater Nantahala Gorge Adventure Center

Fully guided Jeep tours on the Nantahala and Big Pigeon Rivers.
10345 Hwy 19 W
Bryson City, NC 28713
866-319-8870
wildwaterrafting.com



RAFTING/KAYAKING

Nantahala Outdoor Center

Family-friendly rafting with the best; named "#1 Vacation with a Splash!" by Good Morning America.
13077 Hwy 19 W
Bryson City, NC 28713
800-232-RAFT
noc.com



Carolina Outfitters Whitewater Rafting

Call us for Nantahala & Ocoee River Family Whitewater Rafting Adventures, Vacation Rental Houses, Gemstone Mining, Zip Lining, Horseback Riding & Smoky Mountain Train Tours.
715 U.S. Hwy 19
Topton, NC 28781
828-488-6345 • (1-800-GOT-RAFT) 468-7238
carolinaoutfitters.com



Brookside Campground & Rafting

Whitewater rafting available from campground. Creekside sites, country store.
764 U.S. Hwy 19
Nantahala, NC 28781
828-321-5209 • 800-848-7238
brooksiderafting@gmail.com
brooksiderafting.com

Rolling Thunder River Company

The preferred rafting company for over 40 years. Family-friendly trips daily during season. Book online.
10160 Hwy 19 W
Bryson City, NC 28713
800-408-7238
rollingthunderriverco.com

Wildwater Nantahala Gorge Adventure Center

Fully guided, guide assisted, and rental trips on Nantahala, Ocoee, Big Pigeon, and Chattooga Rivers.
10345 Hwy 19 W
Bryson City, NC 28713
866-319-8870
wildwaterrafting.com



ZIPLINING

Nantahala Outdoor Center

NOC offers the premier Mountaintop Zipline Tour with 8 zips including the half mile Mega Zip! NEW for 2025—Mountaintop Zipline Lite—for younger adventurers!
13077 Hwy 19 W
Bryson City, NC 28713
800-232-RAFT
noc.com



ZIPLINING

Wildwater Nantahala Gorge Adventure Center



With 5 full length zipline courses across GA, SC, TN, and NC, plus 2 popular Kid Zips for the youngest flyers. Wildwater has you covered.

10345 Hwy 19 W
Bryson City, NC 28713
866-319-8870
wildwaterrafting.com

REAL ESTATE

Good Life Real Estate

Your Boutique Mountain Firm Mountain and Lake, Luxury Log/Modern Homes. Vacation Rental/Second Home Investments. Land, New Construction.

162 Everett St.
Bryson City, NC 28713
828-318-8811
goodliferealestateco.com

SHOPPING

NOC Outfitter's Store



The nation's most-famous paddlesports store. Offers apparel, footwear and equipment for hiking and outdoor lifestyles.

13077 Hwy 19 W
Bryson City, NC 28713
828-488-7230
noc.com

Pop-N-Jacks Gourmet Popcorn

If you haven't tried Pop-N-Jacks gourmet popcorn, you don't know Jack.

225-B Everett St.
Bryson City, NC 28713
828-620-3931
pop-n-jacks.com

Cheddar Box Country Store

We are a family-owned store in Bryson City, NC, offering local jams, BBQ sauces, jewelry, and birdhouses made from gourds—something for everyone!

225 A Everett St.
Bryson City, NC 28713
(828) 356-6198
thelazybeargeneralstore.com

Uncle Bunkys T-Shirt Shop

T-Shirts make memories! Caps, bags, stuffed animals, novelties
150 Everett Street
Bryson City 28713
828-788-1550
facebook.com/Uncle-Bunkys-T-Shirt-Shop

Wesser General Store



One-stop shop for snacks, sundries, souvenirs, beer and wine.
13077 Hwy 19 W
Bryson City, NC 28713
828-488-7226
noc.com

VISITOR INFORMATION



Swain County Chamber of Commerce

Greatsmokies.com

Swain County Visitor Center

Visitor information, maps, brochures, travel guides, Heritage Museum, National Park Gift Shop, public restrooms, and lodging information.

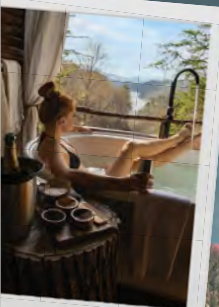
2 Everett St.
Bryson City, NC 28713
828-488-7857



Swain County Tourism Development Authority

Visitor information, maps, brochures, travel guide, lodging information.
828-488-7857

ExploreBrysonCity.com



WE'VE GOT ADVENTURES FOR EVERY KIND OF EXPLORER



From majestic mountain landscapes, scenic hiking trails, and spectacular train excursions to the pristine waters of Fontana Lake and the Nantahala River, experience the outdoors in Bryson City.

828-488-7857 | ExploreBrysonCity.com | @brysoncity

Located in far Western North Carolina one hour west of Asheville and three hours north of Atlanta.



Open to Experience **CHEROKEE**

33 MILES  FROM WAYNESVILLE

16 MILES  TO SYLVA



37 MILES FROM FRANKLIN, NC

HOME OF THE EASTERN BAND OF CHEROKEE
INDIANS

CHEROKEE HOSTS AN ARRAY OF YEARLY
FESTIVALS AND EVENTS STEEPED IN ART,
CULTURE AND DEEP HISTORY OF THE TRIBE

HIDDEN GEMS AND POPULAR ATTRACTIONS:

- ★ **FIRE MOUNTAIN TRAILS** – Multi-use trail system made for mountain biking, hiking or running, 10.5 miles.
- ★ **OCONALUFTEE ISLANDS PARK** – Great place for a picnic, grilling and wading. Excellent walking trail.

VISITCHEROKEENC.COM

BLUEWAYS

Oconaluftee River
Oconaluftee, considered sacred waters by the Cherokee, is a beautiful freestone river that drops 2,000 feet over 10 miles. Wading, tubing and canoeing are all popular activities found on the river. It's most famous for its abundant and healthy rainbow, brook and brown trout. In fact, it holds the North Carolina Record Brown Trout, weighing in at 15.9 pounds.

smokymountainblueways.com



CASINO

Harrah's Cherokee Casino and Resort



Features slots, traditional table games, ten restaurants, shopping, 1,833 guest rooms, computer center, spa, 3,000 seat events center, premier entertainment.

777 Casino Dr.

Cherokee, NC 28719

828-497-7777 • 877-811-0777

harrahscherokee.com

CULTURAL/MUSEUM

Mountain Farm Museum

Collection of historical log buildings and artifacts.

150 U.S. 441 North

Oconaluftee Visitor Center

Cherokee, NC 28719

828-497-1904 • nps.gov/grsm



Museum of the Cherokee People

Artifacts from a culture nearly lost—waiting to be discovered.

589 Tsali Blvd.

Cherokee, NC 28719

828-497-3481

cherokeemuseum.org



Oconaluftee Indian Village Living Museum

Living history museum documenting 18th-century Indian village.

218 Drama Rd.

Cherokee, NC 28719

800-438-1601

visitcherokeenc.com



DINING

Harrah's Cherokee Casino and Resort



Brio Italian Grille
Authentic Northern Italian specialties,

including pizza, oven-roasted steaks, chops, fresh fish and made-to-order pastas.

Harrah's Cherokee

Casino and Resort



Gordon Ramsay Food Market



Offers breakfast, lunch, and dinner, as well as "market-style" options.

Harrah's Cherokee

Casino and Resort

Ruth's Chris Steak House



USDA Prime steaks served in Ruth's Chris' signature style—sizzling hot on a 500-degree plate.

Harrah's Cherokee

Casino and Resort

Guy Fieri's Kitchen + Bar
Wicked Weed Brewpub



E Sports Zone
Noodle Bar
Lobby Café
Earl of Sandwich
Starbucks

Harrah's Cherokee

Casino and Resort

Selu Garden Café

Southern, breakfast bar/menu, soup, salad, sandwich bar
Mon–Fri. Brunch Sat–Sun in Hotel until 2:30pm.

Soundbytes



Ultra-Star Multi-Tainment Center:
American cuisine, sports bar,
11am–2am Fri–Sat,
11am–Midnight Sun–Thurs.

FAMILY ATTRACTION

Oconaluftee Indian Village Living Museum

Living history museum documenting 18th-century Indian village.
218 Drama Rd.
Cherokee, NC 28719
800-438-1601
visitcherokeenc.com



Mountainside Theatre

Home to Unto These Hills, a historic outdoor drama that runs in the summer. In the spring and fall, it is host to Alice in Wonderland and Dracula.
688 Drama Rd.
Cherokee, NC 28719
828-497-2111
cherokeehistorical.com

Ultra Star Multi-Tainment Center

Harrah's Cherokee, hottest new arcade games, Strikes Lounge, boutique bowling, billiards, packages, events, parties.
777 Casino Dr.
Cherokee, NC 28719
828-497-8818
ultrastarnc.com



FISHING/HIKING GUIDES

EBCI Fisheries & Wildlife Management

We invite you to fish in our ancestral homelands. Waters are cold, fishing is great.
1840 Painttown Rd.
Cherokee, NC 28719
828-788-3013
fishcherokee.com



Rivers Edge Outfitters

Fishing gear, clothing, guide trips, rods, reels, bait, flies, classes, permits, flyfishing.
61 Big Cove Rd.
Cherokee, NC 28719
828-497-9300
wncfishing.com

GOLF COURSE

Sequoyah National Golf

18 Hole Robert Trent Jones II Design - Renovated 2020. 45 minutes west of Asheville, heart of Great Smoky Mountains. Open to the public. Book your tee times @ www.sequoyahnational.com
79 Cahons Rd.
Whittier, NC 28789
828-497-3000



LODGING

Fairfield Inn and Suites

Located in the Casino District. Across the street from Harrah's Casino on Hwy 19. Amenities: exercise facility, Complimentary hot breakfast.
568 Paint Town Rd.
Cherokee, NC 28719
828-497-0400 • 800-228-2800
marriott.com/avlck



Cherokee Inn

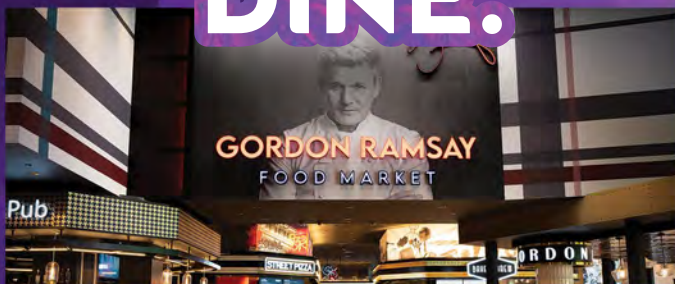
Newly remodeled. Close to Harrah's Casino. Open year-round. Refrigerators, microwaves in every room.
185 Tsalagi Rd./Hwy 19
Cherokee, NC 28719
828-497-3115 • 800-426-7866
choicehotels.com/north-carolina/cherokee/
choice-hotels/ncb03

CAMPGROUND

Fort Wilderness RV Park

Pull-thru's, bathhouses, DirectTV, cabins, basketball, shade, paved, horseshoes, peaceful, pool, playground, security, gameroom, Wifi, pavilion.
284 Ft. Wilderness Rd.
Cherokee, NC 28789
828-497-9331
fortwilderness.net

DINE.



PLAY.



STAY.



Harrah's[®] CHEROKEE CASINO RESORT

Subject to change or cancellation. Must be 21 or older to enter casino floor and to gamble, and must present a valid state or federal photo ID upon request. Know When To Stop Before You Start.® Gambling Problem? Call 1-800-522-4700. An Enterprise of the Eastern Band of Cherokee Indians. ©2025, Caesars License Company, LLC.

LODGING

Smokemont

Open year-round weather permitting. Camping, picnic, restrooms, trailer space, drinking water, handicap-accessible, hiking trail, horse trail, fishing, scenic views, information, fee required.
recreation.gov/camping/campgrounds/232486

Entrance to the Blue Ridge Parkway and Great Smoky Mountains National Park

Open year-round weather permitting.



Mingo Falls

This 200-foot scenic waterfall is a five-minute walk from the Mingo Falls Campground on the Cherokee Indian Reservation.
www.nps.gov/grsm/planyourvisit/mino-falls.htm



Soco Falls

Just north of Cherokee, this waterfall runs down the slope of Soco Bald.
www.facebook.com/SocoFalls



HORSEBACK RIDING

Smokemont Riding Stables

Authorized NPS Concessioner offering guided horseback riding within the Great Smoky Mountain National Park.
135 Smokemont Riding Stables Rd. (off Hwy 441)
Cherokee, NC 28719
828-497-2373
smokemontridingstable.com

OUTDOOR ACTIVITY

Bonfire

Spend an evening by a roaring bonfire among Cherokee storytellers and dancers as they tell tales and dance traditional dances of days gone by.
visitcherokeenc.com/events/detail/Cherokee-bonfire/



**THOUSANDS OF ACRES DEDICATED
TO THE SOCIALLY DISTANT.**



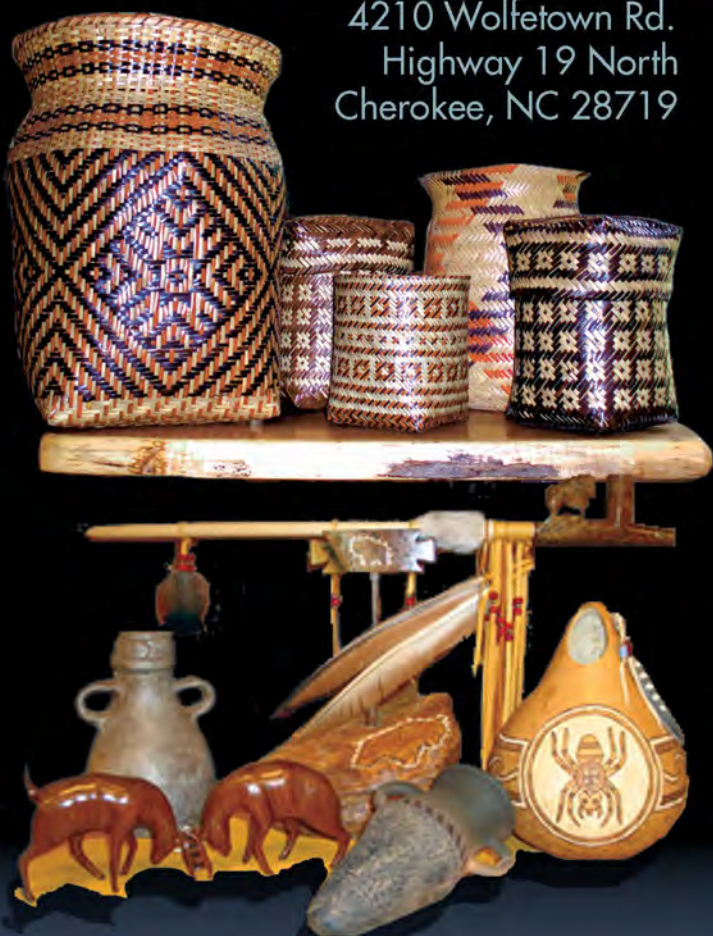
VisitCherokeeNC.com | 800.438.1601

Authentic Indian Art

BEARMEAT'S INDIAN DEN



Open Year Round 7 Days A Week
4210 Wolfetown Rd.
Highway 19 North
Cherokee, NC 28719



bearmeats-indian-den.com

828-497-4052 bearmeatsindianden@gmail.com

SHOPPING

Bearmeat's Indian Den

Founded to present only the best in local arts and crafts, created in the homes of our local people of Cherokee. Summer and fall; several weekends of "hands-on" demonstrations.

Open year-round.

4210 Wolfetown Rd

Cherokee, NC 28719

(828) 497-4052

bearmeats-indian-den.com/

Native American Craft Shop

Specializing locally handmade Cherokee baskets, pottery, wood, stone carvings, southwest Indian jewelry, Pendleton blankets, t-shirts.

1847 Tsali Blvd.

Cherokee, NC 28719

828-497-6790

greatsmokiesart.com

Qualla Arts and Crafts Mutual



Shop over 3,000 authentic baskets, jewelry, carvings and more made by Cherokee Indian co-op members.

645 Tsali Blvd.

Cherokee, NC 28719

828-497-3103

quallaartsandcrafts.com

Traditional Hands Native American Jewelry & Art Gallery



Gallery & Jewelry shop featuring master silversmith General B Grant & other native artist from several tribes.

1045 Tsalagi Rd.

U.S. 19/U.S. 441 (Bus)

Cherokee, NC 28719

828-554-5884

traditionalhands.com

VISITOR INFORMATION

Cherokee Welcome Center



Come experience

11,000 years of soul-stirring Cherokee history, culture, art, legend, tradition and events.

498 Tsali Blvd.

Cherokee, NC 28719

800-438-1601

visitchokeenc.com

EBCI Fisheries & Wildlife Management



We invite you to fish in our ancestral homelands. Waters are cold, fishing is great.

1840 Painttown Rd.

Cherokee, NC 28719

828-788-3013

fishcherokee.com

Soco Falls



TRADITIONAL HANDS



WAMPUM
SILVER
TURQUOISE

NATIVE AMERICAN JEWELRY



US HWY 19
1045 TSALAGI RD
CHEROKEE, NC 28719
PHONE (828) 554.5884

www.TRADITIONALHANDS.com



Open to Experience **FONTANA DAM, ROBBINSVILLE & LAKE SANTEETLAH**

31 MILES  FROM BRYSON CITY

56 MILES  TO MURPHY



46 MILES FROM FRANKLIN, NC

ENTRANCE TO SPECTACULAR CHEROHALA
SKYWAY, A NATIONAL AND STATE SCENIC BYWAY

3 VIBRANT COMMUNITIES:

- ★ **FONTANA DAM** – Fontana Dam is ranked among the most beautiful dams in the world & the highest concrete dam east of the Rockies. Beautiful views at visitor center.
- ★ **ROBBINSVILLE** – Quaint town with friendly atmosphere & outdoor adventure abound.
- ★ **LAKE SANTEETLAH** – A water wonderland of camping, boating and hiking

HIDDEN GEMS AND POPULAR ATTRACTIONS:

- ★ **TAIL OF THE DRAGON** – America's #1 spot for sport car and motorcycle enthusiasts. 11-miles with 318 curves. tailofthedragon.com
- ★ **CHEROHALA SKYWAY** – This scenic 43-mile road stretches from the mountains of Robbinsville into Tennessee backcountry. cherohala.com
- ★ **JOYCE KILMER MEMORIAL FOREST** – Impressive 3800-acre wilderness. 5410 Joyce Kilmer Rd. fs.usda.gov

GRAHAMCOUNTYTRAVEL.COM
TOWNOFROBBINSVILLE.COM
TVA.COM

AGRITOURISM

Graham County Farmer's Market

Local farmers and crafters. Free. Saturdays July–October, 8am–12noon. Parking lot of Graham County Library, 80 Knight St. *Robbinsville* 828-479-8796

ARTS/CRAFTS

Stecoah Valley Cultural Arts Center

Gallery, historic auditorium, commercial kitchen, arts, crafts, and culinary classes, fall festival, summer concerts. 121 School House Rd. *Robbinsville, NC 28771* 828-479-3364 stecoahvalleycenter.com

BLUEWAYS

The Cheoah River

The Cheoah River, 20 miles long, is located in the extreme southwestern corner of North Carolina, near Robbinsville. Unique in its features, the Cheoah is one of the most physically demanding rivers in the world and the perfect challenge for the most adventurous paddlers smokymountainblueways.com



Lake Santeetlah

The lake hosts a variety of fish including smallmouth bass, largemouth bass, walleye, crappie, bream, and lake trout. There are more than fifty primitive campsites scattered around the lake that include a picnic table and fire ring. smokymountainblueways.com



HISTORIC TAPOCO LODGE



Established in 1930, Tapoco situated on 120 acres in the lush mountain region of the Nantahala National Forest on the banks of the cascading Cheoah River. Adventures like hiking, rafting, kayaking, fishing, mountain biking, and winding roads are plentiful. After your day of adventure, experience sanctuary in one of our historic rooms with modern conveniences. Later on, enjoy riverside dining or an evening by the fire pits.

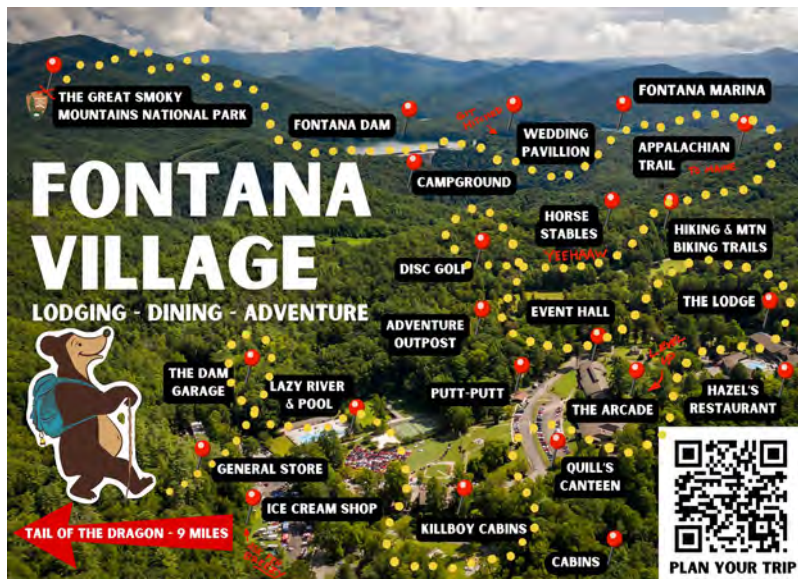


Cheoah Dining open for breakfast daily 8–10 am
Tapoco Tavern open daily 11 am – 8 pm



828-498-2800 ROBBINSVILLE, NORTH CAROLINA

info@tapoco.com / www.tapoco.com



LODGING

Fontana Village Resort & Marina

Lodge, cabins, campground, shopping, restaurants, entertainment, disc golf, Lazy River, marina, groups. Pets welcome.

300 Woods Rd.

Fontana Dam, NC 28733

828-498-2211 • 800-849-2258

fontanavillage.com



Historic

Tapoco Lodge

Where adventure and sanctuary meet, historical ambiance with modern conveniences, tavern, lodging, 11 hiking trails, Cheoah River releases, and more.

14981 Tapoco Rd.

Robbinsville, NC 28771

828-498-2800

tapocolodge.com



Deal's Gap Motorcycle Resort

Store, grill, motel, Wifi, gas station, merchandise, local information, fire pit, March–November.

17548 Tapoco Rd.

Robbinsville, NC 28771

800-889-5550

dealsgap.com



Rivers Edge Treehouse Resort

Six luxury treehouses, riverfront, covered parking, king beds, Wi-Fi, refrigerators, TV, grills and firepits.

195 Old U.S. 29

Robbinsville, NC 28771

828-735-2228

riversedgetreehouses.com

Snowbird Mountain Lodge

4633 Santeetlah Rd

Robbinsville, NC 28771

(828) 479-3433

www.snowbirdlodge.com

OUTDOOR ACTIVITY

Tsali Recreation Area

A popular loop trail system for mountain bikers and horseback riders – best known as a challenging mountain bike course. Also, enjoy fishing, motorized boating, kayaking and camping.

Santeetlah Lake Trail

Easy to moderate trail with some lake shore views. 8.5 miles open with two trailheads and trailer parking. The ¼ mi single track Connector Trail is great for beginning mountain bikers.

Cherohala Skyway

Connecting the Cherokee National Forest to the Nantahala National Forest, this clean, smooth highway encourages you to open up your sports car or pause your RV for a sandwich and the beautiful sights.

20 miles • 45 minutes

ncdot.gov/travel/scenic



The Benton MacKaye Trail

The trail is approximately 300 miles in length and starts 0.2 miles down the Appalachian Trail from Springer Mountain, GA traveling north through TN and NC. The “BMT” features many scenic views of surrounding mountains, water falls, streams and wildlife. For more information visit bmta.org and Facebook.

Fontana Lake Cruises

Offers exclusive CraigCat 2-seater catamaran rentals on Fontana Lake, providing thrilling and comfortable experiences amidst WNC.

3336 Balltown Road

Bryson City, NC 28713

(608) 393-2324

fontanalakecruises@gmail.com



Your Natural Destination



MAKE MEMORIES EVERY SEASON OF THE YEAR

MAY

SMOKY MOUNTAIN
SPRING FEST

FADING VOICES
DEMONSTRATION DAY

JUNE

FLAME AZALEA
FESTIVAL

AN APPALACHIAN
EVENING CONCERTS

JUNE - AUG

STECOAH SPRING
ARTISAN DRIVE ABOUT

JULY

GRAHAM COUNTY
HERITAGE FESTIVAL

AUG.

DRAGON HILL
CLIMB SERIES

SEPT.

THE ROAD TO FALL:
CHEROHALA SKYWAY

SEPT - NOV

OCT.

THE STECOAH
HARVEST FESTIVAL

NOV.

STECOAH FALL
ARTISAN DRIVE ABOUT

DEC.

HOMETOWN HOLIDAYS
SEASON OF JOY



GrahamCountyTravel.com

OUTDOOR ACTIVITY

Fontana Marina Excursions & Boat Rentals

Rental choices include pontoon boats, canoes, kayaks, and paddle boards. Pontoon Boat Shuttle Services are available for hikers and trout fishermen wanting to explore Eagle Creek, Hazel Creek, or any of the North Shore of the Fontana Lake. Get out on the Southern Boundary of the Great Smoky Mountain National Park with easy access to the mountains or just a short trip back to luxury of the Fontana Village Resort. Pick-up and drop-off services are available. 828-498-2129

Nantahala Byway

The steep walls that frame the Nantahala Gorge are an impressive site you'll tour as part of this swirling byway. Nearby, the Nantahala River has become legendary for its whitewater. Just depart from Marble, head east and don't stop until you pass Wesser. 43 miles • 1.5 hours
Travels through Cherokee, Graham, Jackson & Swain counties.
ncdot.gov/travel/scenic

Snowbird (Nantahala National Forest)

Open year-round
Picnic, restrooms, fishing.



Cheoah Point (Nantahala National Forest)

Open April–October.
Camping, picnic, restroom, trailer space, drinking water, hiking trail, boat ramp, fishing, fee required.



Horse Cove (Nantahala National Forest)

Open year-round
In winter no water or fee. Camping, restrooms, trailer space, drinking water, fishing, fee required.



Cheoah & Calderwood Lakes

Each 7+ miles, boating, flat-water kayaking & canoeing. Harrison Ford jumped off Cheoah Dam in the movie *The Fugitive*.



Joyce Kilmer (Nantahala National Forest)

Open year-round
Picnic, restroom, drinking water, hiking trail, information.



Cable Cove (Nantahala National Forest)

Open April–October.
Camping, picnic, restrooms, trailer space, drinking water, boat ramp, fishing, fee required.



Sassafras Falls

Follow a 3.5-mile trail to multiple wide, steep falls about 45 feet high.

Big Snowbird Trail

12.7 miles, difficult, fishing
Trailhead: Big Snowbird Road. The first four miles are recommended for day hikes.

Tsali (Nantahala National Forest)

Open April–October.
Off NC 28 past Bryson City, or if coming from Robbinsville NC 143 until you reach NC 28, go east. Entrance on north side of NC 28, well-marked. Camping, picnic, trailer space, showers, drinking water, hiking trail, horse trail, bike trail, boat ramp, fishing, fee required.



Rattler Ford Group Campground (Nantahala National Forest)

Open mid-April–mid-October.
Showers, hiking trail, fishing, reservations required.
Four campsite areas that accommodate around 25 persons each for tent camping.
ReserveUSA.com or 877-444-6777.





OUTDOOR ACTIVITY

Yellow Creek Falls

Travel U.S. 129 North from Robbinsville. Go two miles past the Yellow Creek Road intersection and the parking area and trailhead/sign will be on the right. Walk 0.33 mile to falls.

Joyce Kilmer Memorial Trail

2 miles, easy
Trailhead: Joyce Kilmer Memorial Forest parking lot. Joyce Kilmer Forest, the last remnant of virgin forest in the Southern Appalachians, offers a spectacular two-mile loop trail.

Maple Springs Observation Point

800 feet, easy, handicap-accessible
Trailhead: Maple Springs Observation Area. Maple Springs offers an unparalleled view of the Smokies, especially during the fall color season.

Waterfall on Tellico River

A 0.5-mile trail to two large cascading waterfalls, separated by a short run, with an overall height of about 45 feet.

Fontana Lake

Offers best smallmouth bass fishing. Enjoy boating, floating, and kayaking. Hikers can enjoy views of the lake from Clingmans Dome.
smokymountainblueways.com



Fontana Village & Tapoco Lodge Trails

The individual trails vary widely in their width, steepness, and technical difficulty. Describing one distinct route here is impossible because this network of trails crisscrosses all around the properties, totaling 27 & 31 miles respectively.

SHOPPING

Fontana General Store

The Fontana General Store carries all the essentials for travel and leisure. From Grocery items to snacks, hiker supplies and souvenirs and gifts.
180 Welch Road
Fontana Dam, NC 28733
828)-498-2148
fontanavillage.com





SHOPPING

Fontana Pitstop Gas Station and Shop

Located on HWY 28, the Pitstop is equipped to handle all your travel adventures. Fuel up your vehicle and grab your road warrior souvenir at the stop!
 428 Fontana Road
 Fontana Dam, NC 28733
 828-498-2140
fontanavillage.com

VISITOR INFORMATION

Fontana Dam & Visitor Center

Highest dam east of Rockies. The AT crosses over dam with showers, hikers call it the Fontana Hilton.
 71 Fontana Dam Rd.
 Fontana Dam, NC 28733
 828-498-2234
tva.com

Graham County Travel & Tourism

Remote landscapes and outdoor adventure await. Stop by for maps and brochures to play or extend your stay!
 474 Rodney Orr Bypass
 Robbinsville, NC 28771
 828-479-3790 • 800-470-3790
grahamcountytravel.com



Tail of the Dragon

Motorcycle & sport car information for Tail of the Dragon, Cherohala Skyway, Moonshiner 28, Devils Triangle and more.
 17555 Tapoco Rd.
 Robbinsville, NC 28771
 828-479-8400 • 800-768-7129
tailofthedragon.com

Town of Lake Santeetlah Travel Development Authority

Adventure awaits within remote mountain forests bordering the Great Smoky Mountains. Lakefront vacation rental homes.
 16 Marina Dr.
 Lake Santeetlah, NC 28771
 828-479-8190
discoversanteetlah.com
townoflakesanteetlah.com

Town of Robbinsville

Robbinsville is the perfect destination for folks wanting outdoor adventure, beautiful lakes and mountain culture.
 4 Court St.
 Robbinsville, NC 28771
 828-479-3250
townofrobbinsville.com

Open to Experience **FRANKLIN & NANTAHALA**

24 MILES  **FROM** HIGHLANDS

50 MILES  **TO** BRYSON CITY



ONLY 2.5 HOURS FROM ATLANTA, GEORGIA

GEM CAPITAL OF THE MOUNTAINS!

2 VIBRANT COMMUNITIES:

- ★ **FRANKLIN** – Franklin area is rich in gems & minerals and is known locally as the “Gem Capital of the World”.
- ★ **NANTAHALA** – Located west of Wayah Gap. Nantahala is a Cherokee word which means “Land of the Noonday Sun”.

HIDDEN GEMS AND POPULAR ATTRACTIONS:

- ★ **WAYAH BALD LOOKOUT TOWER** – Great views of Appalachian Mountains in GA, TN, SC and NC. fs.usda.gov/recarea/nfsnc/recarea/
- ★ **BARTRAM TRAIL** – Wallace Branch to William’s Pulpit-4.1 mile trail located near Franklin & offers many activity options. Best used March-October. alltrails.com
- ★ **NANTAHALA NATIONAL FOREST** – The largest of four forests in NC comprised of over half a million acres with 600 miles of hiking trails, peaks 5,500 feet. visitnc.com
- ★ **SCOTTISH TARTANS MUSEUM** – Only Scottish Tartans Museum in the United States. Gift shop & Museum. scottishtartans.org

EXPLORINGWNC.COM
EXPERIENCEFRANKLINNC.COM

AGRITOURISM

Franklin Tailgate Market

Variety of only homegrown products such as cheese, plants, eggs, trout, honey and more. The Franklin Farmers Tailgate Market was established in 2001 by a group of organic growers. Saturdays from 8:00am – 12:00pm.
 226 E Palmer St.
 Franklin, NC 28734
facebook.com/FranklinNCFarmersMarket/

Skyvue Ranch Alpacas

Alpacas, llama, animal sales, fiber store, yarn, roving, felt, fleece, scarves, quilts, crafts, books. Call for reservations for tours.
 179 Harvest Cove Rd.
 Franklin, NC 28734
 828-369-0047
skyvueranchalpacas.com

AIRPORT

Macon County Airport

State-of-the-art airport terminal facility, business development center.
 1241 Airport Rd.
 Franklin, NC 28734
 828-524-5529
maconcountyairport.com

ANTIQUES/THRIFT

Nestfeathers Antiques

Visit a quaint old building with three floors of wonderful antiques and wonderful prices.
 153 E Palmer St.
 Franklin, NC 28734
 828-349-5476
nestfeathersnc.com

Whistle Stop Depot

Antique mall and specialty shops including furniture, country accessories, clothing, jewelry, crafts and food.
 145 River Rd.
 Franklin, NC 28734
 828-349-1600
whistlestopmall.com

Wesser Bald
 Photo by Eric Haggart Imagery

ARTS/CRAFTS

Uptown Gallery

Original art by area artists. Classes and workshops available. Call for art association membership benefits.

30 E Main St.

Franklin, NC 28734

828-349-4607

franklinuptowngallery.com

BLUEWAYS

The Little Tennessee River

The Little Tennessee and its immediate watershed comprise one of the richest archaeological areas in the southeastern U.S. The river offers canoeing, fishing and floating.

smokymountainblueways.com



Nantahala Lake

Nantahala Lake sits above the Nantahala Gorge and is known for its scenic beauty and crystal-clear waters. The lake offers recreational opportunities that include fishing, swimming, boating, skiing and many other activities.

smokymountainblueways.com



BREWERY/WINERY

Lazy Hiker Brewing Company

Come get lazy, enjoy craft beer in our taproom, family-friendly, cans/growlers, to-go, food truck on-site.

188 W Main St.

Franklin, NC 28734

828-349-BEER (2337)

lazyhikerbrewing.com



Slanted Window Tasting Station

Unique tasting experience featuring local wines, bourbons and craft beers paired with an excellent curated menu.

587 Harrison Ave, Franklin

828-276-9463

slantedwindow.com



SenAmore Vineyard & Farms, LLC

SenAmore Vineyard and Winery, home of Slanted Window Wines, is located in Tellico. We produce excellent Bordeaux style wines from this ancient region.

4388 Tellico Road

Franklin, NC 28734

828-276-9463

slantedwindow.com

CULTURE/MUSEUM

Cowee School Arts & Heritage Center

Music, crafts, heritage, history, traditional food, pottery, mountain, families, weaving, concerts, clogging, arts, festival, bluegrass.

51 Cowee School Drive

Franklin, NC 28734

828-369-4080

coweeschool.org

Cowee Viewsite and Trails

With 16 acres and 1,600 feet of Little Tennessee River frontage, this preserve has the only ADA-accessible trail in Macon County.

57860 Bryson City Road

Franklin, NC 28734

828-349-1945

coweeschool.org

Macon County Historical Museum

Local history and genealogy. Special rotating collections. Gift shop. Genealogical research free to members.

36 W Main St.

Franklin, NC 28734

828-524-9758

maconnhistorical.com

Scottish Tartans Museum

Come discover your heritage at the only Scottish Tartans Museum located outside Scotland. Quality Highland attire & Scottish gifts. NO PETS.

86 E Main St.

Franklin, NC 28734

828-524-7472

scottishtartans@gmail.com

scottishtartansgiftshop.com

scottishtartansmuseum.org

The Rickman Store

The Rickman Store is a historic site, open every Saturday from May through December from 10:00 a.m. to 4:00 p.m. Music jam sessions start at noon.
 259 Cowee Creek Rd,
 Franklin, NC 28734
 FB@Friends of the
 Rickman Store

Taste of Scotland and Celtic Festival

Enjoy Everything Scottish: food, clans, parades, pipe bands, music, highland games, children's activities, storytelling and souvenirs. Call or Check Website.
 Franklin, NC 28734
 828-421-7302
tasteofscotlandfest.org

Franklin Gem & Mineral Museum

Downtown 1850's jail. 8 rooms of fossils, Indian artifacts, fluorescing minerals, gifts, local jewelry, free admission.
 25 Phillips St.
 Franklin, NC 28734
 828-369-7831 • fgmm.org

DINING**Asian King Buffet Sushi Bar & Chinese Cuisine**

Chinese buffet featuring over 40 items plus sushi.
 109 Commons Dr.
 Franklin, NC 28734
 828-349-9800
asianking1.com

Fine Jewelry Est. 1958
Ruby City
GEMS & MINERALS
FABULOUS FREE MUSEUM!

Jewelry • Lapidary
Gem Buckets • Stone Cutting
Healing Stones & Crystals



**VOTED MACON COUNTY'S
 BEST JEWELRY STORE & MUSEUM 2023!**



gems@rubycity.com

130 East Main St.
 Franklin, NC

rubycity.com
 (828)524-3967

DINING

Fat Buddies Ribs and BBQ of Franklin

Family-Style BBQ, Baby Back Ribs, Smoked Pork, Smoked Beef, Smoked Chicken, Hand-Cut Steaks.

311 Westgate Plaza

Franklin, NC 28734

828-349-4743

fatbuddiesribsandbbq.com

Gazebo Creekside Cafe

Gazebo Creekside Cafe is where the locals eat. Enjoy outdoor dining.

44 Heritage Hollow

Franklin, NC 28734

828-524-8783

gazebocreeksidecafe.com

Jack the Dipper

Home of the Warm Waffle Cone

1024 Georgia Road

Franklin, NC 28734

(828) 349-5798

Jackthedipper.com

Lakes End Café & Grill

Enjoy a delicious lunch or dinner with Lakeside seating, friendly and elegant atmosphere, and great service at the best restaurant on Lake Nantahala. Catering

17838 Wayah Road
Topton, NC 28781
828-321-3001

Las Margaritas

Authentic Mexican Restaurant. Indoor and outdoor seating. Adult beverages. Kids menu. Pets welcome at outdoor seating. Open 7 days a week, 11am–9pm.

24 lotla St.

Franklin, NC 28734

828-369-2021

facebook.com/people/las-margaritas-mexican-restaurant

Lazy Hiker

Brewing Company

Come get lazy, enjoy craft beer in our taproom, family-friendly, cans/growlers, to-go, food truck on-site.

188 W Main St.

Franklin, NC 28734

828-349-BEER (2337)

lazyhikerbrewing.com



Siam Thai Cuisine

Come enjoy our authentic, Bangkok style Thai cuisine, and our friendly staff.

8507 Georgia Rd.

Otto, NC 28763

828-369-9324

Sakura Japanese Restaurant

Japanese, Sushi, Asian, vegetarian, vegan, seafood, sashimi, fresh, hibachi, allergy-friendly, draft beer, wine, sake, teriyaki, kid-friendly.

57 Highlands Rd.

Franklin, NC 28734

828-349-8917

sakurafranklinnc.com

Slanted Window Tasting Station

Unique tasting experience featuring local wines, bourbons and craft beers paired with an excellent curated menu.

587 Harrison Ave,

Franklin NC, 28734

828-276-9463

slantedwindow.com



Smokestack Cafe

A cozy spot in Franklin, NC that offers smoky delights and great times. We offer catering and dine-in or take out services from 7 AM to 2 PM on Monday and Tuesday, and from 7 AM to 8 PM Wednesday through Friday.

61 S. Patton Ave

Franklin, NC 28734

(828) 369-0001

Smokestack-cafe.com

Sunset Restaurant

Great homestyle cooking with family atmosphere, homemade pies, daily specials and sides. Dine in, curbside, carryout, catering.

498 Harrison Ave.

Franklin, NC 28734

828-524-4842

facebook.com/sunsetrestaurantnc

sunsetrestaurantnc.com

FAMILY ATTRACTION

Little Tennessee River Greenway Frog Quarters

4.5 mi, mostly paved trail. A support organization, Friends of the Greenway is located near the trail offering information, drinks, gifts and free wifi.
573 E Main St.
Franklin, NC 28734
828-369-8488
littletennessee.org

Andy's Trout Farm

Fishing, gem mining, hiking, cabins, family fun, waterfalls, weddings, RVs, wildflowers. Church groups, family reunions.
116 Andy's Trout Farm Rd.
Otto, NC 28763
706-746-2550
andystroutfarm.com

Tiny Life Homes

Tour our tiny homes and cabins to see how you can live large, while living tiny.
4075 Georgia Rd.
Franklin, NC 28734
828-634-0077
sales@tinylife.com
tinylife.com



GEM MINES & SHOPS

Artisan's Mineral & Gemstone Gallery

30 years experience in stone cutting & jewelry making from rough to refined gems/minerals.
3348 Georgia Rd.
Franklin, NC 28734
828-524-9193
artisanjewelrync.com

**SLANTED WINDOW TASTING STATION**

Your Local Vineyard to Glass Experience!



Local Estate Wines, NC Beers, Bourbon & Delicious Food + Live Music Every Friday & Sunday!

587 Harrison Ave.
Franklin, NC 28734
828-276-9463

Gold City Gem Mine

Gem mining.
Gold panning.
Gem cutting.
Jewelry shop. Snacks and refreshments. Gifts.
Souvenirs. Antiques.
9410 Sylva Rd, Hwy 441
Franklin, NC 28734
800-713-7767
Find Us On Facebook:
goldcitygemmine
totalgems.com/
goldcity1993@gmail.com

**Mason's Ruby and Sapphire Mine**

The original dig-your-own gemstone mine. Now offering enriched buckets.
6961 Upper Burningtown Rd.
Franklin, NC 28734
828-369-9742
masonsmine.com



GEM MINES & SHOPS



NC's largest and finest gem and mineral store. Gemstone cutting and mounting.

Free museum.

130 E Main St.

Franklin, NC 28734

800-821-7829

rubycity.com

Rose Creek Mine

Good clean dirty fun! All equipment provided.

Family friendly, picnic area, closed Sundays.

115 Terrace Ridge Dr.

Franklin, NC 28734

828-349-3774

rosecreekmine.com

Primitive Outback Kayaking & Gem Mining

Come enjoy Gem Mining for Treasure in our covered outdoor flume, kayaking trips on the river, and visit our baby fainting goats. Fun for everyone!

155 Robin Lynn Ln.

Otto, NC 28763

828-349-1717

primitiveoutback.com

Sheffield Gem Mine

A True Authentic Ruby Mine!

You'll be mining NATIVE dirt with the potential to find NATIVE RUBIES/SAPPHIRES. Already dug buckets, come see us and pick out your LUCKY bucket!!!

385 Sheffield Farms Rd.

Franklin, NC 28734

828-369-8383

sheffieldmine.com

GENERAL SERVICE

Stewart Communications

Stewart Communications is a one-stop-shop for all your marketing needs. Our team of experienced professionals can help your business succeed.

98 Hyatt Road

Franklin, North Carolina 28734

828-783-7266

stewartcomm.com

WELLNESS

Rose Room Spa

Come in and escape the ordinary. Permanent makeup, eyelash extensions, eyelash lifts, eyelash tinting, facials, waxing, spray tanning, and our infrared sauna.

21 Heritage Hollow Dr.

Franklin, NC 28734

828-349-0702

roseroomspallc.com

Yoga Den

Yoga Den in Franklin, NC offers a variety of yoga classes for all levels, a boutique with premium yoga gear, and a cozy café with smoothies and espresso drinks. Enjoy a holistic wellness experience.

135 Highlands Rd

Franklin, NC 27834

yogadennnc.com

(828) 482-9001

LODGING

A Captain's Cabin & Mermaid's Mountain Love Shack

Perfect setting for a private getaway or family retreat and a private mountain cottage perfect for couples retreat.

VRBO.com//3972191

VRBO.com/4085386

Sheldon Miller Rd.

& Holly Drive

Franklin, NC 28734

Andy's Trout Farm

Fishing, gem mining, hiking, cabins, family fun, waterfalls, weddings, RVs, wildflowers.

Church groups, family reunions.

116 Andy's Trout Farm Rd.

Otto, NC 28763

706-746-2550

andystroutfarm.com

A Sapphire Inn

Downtown Franklin, walk to Restaurants, Shops, and Breweries. We are Pet-Friendly. Also have special rates for: hikers, bikers, miners, military veterans, seniors, workers and groups.

761 E Main St. Franklin, NC

828-524-4406

sapphireinnfranklin.com

ATbnb

ATbnb is a charming house situated on a peaceful 11-acre property with a small creek. Located between Franklin and Bryson City, NC.

191 Bowers Mountain Rd
Franklin, NC 28734
404-234-1622 • Atbnb.com

Big Bear Cabin Rentals

Log cabins in wooded settings with Wi-Fi and W/D. Perfect base location and open year-round.

3590 Georgia Rd.
Franklin, NC 28734
828-349-0099 • 866-349-0099
bigbearfranklin.com

Colonial Inn Franklin

30 rooms, mountain views, microwave, refrigerator, TV, coffee in lobby and Wi-Fi. Limited Pet rooms with terms and conditions.

3157 Georgia Rd.
Franklin, NC 28734
828-524-6600
colonialinnfranklin.com

Franklin Terrace B&B

Historic antebellum style home, walk to town, country breakfast, rock on the porch, a/c, WiFi.

159 Harrison Ave.
Franklin, NC 28734
828-369-8888
franklin-terrace.com

Horse Tales Farm Inc

Two Cozy Cabins on Horse Sanctuary, Dog Friendly, Wifi, Firepits, Scenic, Convenient. Please call or email to book.

142 & 137 Coweeta Ter
Otto, NC 28763
horsetalesfarm@yahoo.com
(863) 255-7937

Quality Inn

Quality Inn in Franklin, NC offers comfortable accommodations with free WiFi, hot breakfast, and an indoor pool. Enjoy a relaxing stay in the Smokies.

313 Cunningham Rd
Franklin, NC 28734
www.choicehotels.com/north-carolina/franklin/com-

fort-inn-hotels/nc373
(828) 369-9200

Stay Nantahala Cabin & Yurt Rentals

Experience and embrace the beauty of Lake Nantahala and the Nantahala area by staying in our Luxury Yurts, Lake Front Cabins, Lakeside Cabins, or Mountainside Cabins.

17838 Wayah Rd
Topton, NC 28781
838.321.3001
staynantahala.com

Stay Out Yonder

2 Bedroom Bungalow conveniently located in town! Dogs Welcome! Book on Airbnb.com.

121 Hillcrest Ave.
Franklin, NC 28734
828-369-6007
airbnb.com/h/stayoutyonder

CAMPGROUND**Andy's Trout Farm**

Fishing, gem mining, hiking, cabins, family fun, waterfalls, weddings, RVs, wildflowers. Church groups, family reunions.

116 Andy's Trout Farm Rd.
Otto, NC 28763
706-746-2550
andystroutfarm.com

Cowee Campground

We offer 6 RV/ Travel Trailer/ Van full hookups for vehicles 30 ft approx. long. We also have 8 tent sites in the shaded woods with a gorgeous rustic setting.

360 Sheffield Farms Rd
Franklin, NC 28734
(828) 369-8383
sheffieldmine.com/lodging

Cullasaja River RV Park

Our campground is located on the Cullasaja River, five miles from Franklin.

6269 Highlands Rd.
Franklin, NC 28734
828-524-2559 • 800-843-2795
campnc.com

LODGING

CAMPGROUND

Franklin RV Park and Campground

Full hook-up sites, 20/30/50 AMP, free Wi-Fi, cable. Big rigs welcome. Pull-through sites, pavilion, fireplace.

230 Old Addington Bridge Rd.
Franklin, NC 28734
828-349-6200
franklinrvpark.com

Mi Mountain Campground

Full hookups, tent sites, rustic cabins, firepits, playground, pets allowed.

151 Mi Mountain Rd.
Franklin, NC 28734
828-524-6155
mimountaincampground.com

Old Corundum Millsite Campground

Located on Cullasaja River off Hwy 64E, 5 miles from Franklin. 85 sites, full hook-ups.

80-33 Nickajack Rd.
Franklin, NC 28734
828-524-4663
ocmcampground.com

Pines RV Park and Cabins

30/50 AMP. Open year-round. Tenters to 45-Foot RVs. Cabins. Beautiful, quiet mountain setting.

4724 Murphy Rd.
Franklin, NC 28734
828-524-4490
gocampin.net/pinesrvpark

Rose Creek Campground & Cabins

Secluded, flat and shaded campsites located in serene valley surrounded by beautiful mountains and landscape.

140 Terrace Ridge Dr.
Franklin, NC 28734
252-286-2008
rosecreekcamping.com

Whistle Stop Depot

Beautiful mountain views, Wi-Fi, power, water, sewer. Call or email.

145 River Rd.
Franklin, NC 28734
828-349-1600
whistlestopmall.com

OUTDOOR ACTIVITY

Fish Tales Outfitters & Guide Service

We offer guided fly fishing and bass trips throughout the beautiful mountains of Western North Carolina. We have a fully stocked fly and tackle shop.

29 E Main St, Franklin, NC
(828) 421-0732
fishtaleswnc.com

Land and Liquid Adventures

Paddleboard in Western NC: Guided tours, rentals, and custom adventures await. Book now for an unforgettable experience!

30 McClure Mill Rd, Franklin
(541) 301-8010
landandliquidadventures.com

Lakes End Boat Rentals & Marina

Ski Boats, Fishing Boats, Kayak, Canoe, and Paddleboard Rentals.

17838 Wayah Road, Topton
828-321-3001
Visitlakesend.com

Primitive Outback Kayaking & Gem Mining

Kayak down the Little Tennessee River, Gem Mine, and visit our baby fainting goats. Enjoy nature at its best! Great Family Fun!

155 Robin Lynn Ln.
Otto, NC 28763
828-349-1717
primitiveoutback.com

Cowee View Interpretive Site

Across the river from Cowee Mound, the viewing platform, interpretive kiosk, native landscape and walking trail help tell the story of Cowee.

NC-28/Bryson City Road, 7.5 miles north of Franklin
(828) 524-2711
mainspringconserves.org

Friends of the Greenway

The Greenway offers a walk along the Little Tennessee River for nearly five miles. Find out more: littletennessee.org or visit FROG Quarters
573 E Main St.
Franklin, NC 28734



Gibson Bottoms

Gibson Bottoms is a ~65 conserved acres preserve that includes forest trails and 1,000 feet of Little Tennessee River
Rain Ridge Road
Franklin, NC 28734
(828) 524-2711
mainspringconserves.org

**Pickin' on the Square
Saturday Nights**

Late May–Mid October. FREE!
 Bring your family, bring your friends, bring a chair.
townoffranklinnc.com/pickin-on-the-square.html

**Wayah Bald
(Nantahala National Forest)**

Open April 16–December 31.
 70-year-old stone fire tower, where AT & Bartram Trails cross, picnic, restrooms, hiking trail, scenic views.

**Nantahala Gorge
(Nantahala National Forest)**

Open year-round.
 Picnic, canoe/rafting, fishing, scenic views.

Queen Branch

With 16 acres and 1,600 feet of Little Tennessee River frontage, this preserve has the only ADA-accessible trail in Macon County.
Franklin, NC 28734
(828) 524-2711
mainspringconserves.org

**Standing Indian
(Nantahala National Forest)**

Open April–November.
 Camping, picnic, restrooms, trailer space, showers, drinking water, hiking trail, fishing, fee required.

Tessentee Bottomland Preserve

A 110-acre preserve with extensive hiking trails, access to Tessentee Creek and an old farmstead. Stop #53 on the NC Birding Trail.
2249 Hickory Knoll Road,
Franklin, NC 28734
(828) 524-2711
Mainspringconserves.org

Big Laurel Falls and Mooney Falls

An easy 0.5-mile trail brings you to this 30-foot cascading waterfall.

**Hurricane Primitive
(Nantahala National Forest)**

Open April 16–December 31.
 Camping, trailer space, hiking trails, horse trail, fishing.



APPALACHIAN GROWERS

USDA Certified Organic Hemp Products
 Straight from Our Farm in Franklin, NC
www.appalachiangrowers.com • 828-226-3257
info@appalachiangrowers.com

QUILTING

A Stitch In Time

Premier quilt and fabric store, baby lock dealer featuring the latest in fabrics, notions, and classes.

23 Macon Center Dr.

Franklin, NC 28734

828-524-3300 • 919-939-1005

astitchintimenc@gmail.com

REAL ESTATE

Gemstone Village

An active, over 55 retirement development, where you own home & land.

150 N Gemstone Ave.

Franklin, NC 28734

sales@gemstonevillagenc.com

gemstonevillagenc.com

Tiny Life Homes

Tour our tiny homes and cabins to see how you can live large, while living tiny.

4075 Georgia Rd.

Franklin, NC 28734

828-634-0077

sales@tinylife.com

tinylife.com



RE/MAX Elite Realty

Let us help you find your dream home in the mountains!

Outstanding Agents,
Outstanding Results!

1296 E Main St.

Franklin, NC 28734

828-349-4600 • 866-981-4600

propertyinfranklin.com

SHOPPING

Appalachian Growers

USDA organic hemp farm providing quality products: Full spectrum oil, lotion and salve.

250 Depot St. #2204

Franklin, NC 28734

828-226-3257

appalachiangrowers.com

Franklin Office Supply

Modern office and home meets fresh products, design services, supplies, shopping and more.

161 Highlands Road

Franklin, NC 28734

828-349-7468

franklinofficesupply.com/

Friends of the Macon County Public Library

Non-profit, used, CDs, children's, puzzles, magazines, spiritual, fiction, non-fiction, rare, homeschooler textbooks, DVDs, large print, regional.

115 Highlands Rd.

Franklin, NC 28734

828-349-6256

maconlibraryfriends.org



Limberlost Pottery Studio and Gallery

We are an art gallery with an attached pottery studio for our three resident ceramic artists.

We also have work by artists working in other mediums.

415 NE Main Street

Franklin, North Carolina 28734

828-526-6119

facebook.com/limberlostgallery

instagram.com/limberlostgallery

Mossy Rock WNC

Home decor, accessories, spa products with urban look, feel, perfect for you and your home!

37 E. Main Street

Franklin, NC 28734

(828) 369-1612

facebook.com/MossyRockNC

Yonder

Locally Sourced Organic Groceries, Cider, Meade + Wine, Events + Live Music.

151 Hillcrest Ave.

Franklin, NC 28734

828-421-0561

yondernc@gmail.com

eatrealfoodinc.com



NC's largest and finest gem and mineral store. Gemstone cutting and mounting.

Free museum.

130 E Main St.

Franklin, NC 28734

800-821-7829 • rubycity.com

Trail Mix

A unique gift shop with curated & quirky goods catering to those with an appreciation for all things outdoors. We carry a range of gifts for all ages.

31 E Main Street

Franklin, NC 28734

(828) 421-9686

www.trailmixnc.com

VISITOR INFORMATION

**Franklin
Chamber of
Commerce**

Waterfalls, arts,
family, hiking, gems, getaway,
information, mines, trails,
visitors, adventure, shopping,
antiques, outdoors, historic.
98 Hyatt Rd.
Franklin, NC 28734
828-524-3161
visitfranklinnc.com

**Franklin/
Nantahala Tourism
Development
Committee**

Promoting tourism
in Franklin and
Nantahala.
Franklin, NC 28734
828-524-3161
ExploringWNC.com

**Franklin Tourism
Development
Authority**
The Franklin
Tourism

Development Authority is
responsible for overseeing
tourism in Franklin, NC.
95 E. Main St., Franklin, NC
TDAFranklin@gmail.com
experiencefranklinnc.com

**Smoky
Mountain
Host
Visitor Center**

Discover activities, events,
history, and natural beauty
the region has to offer. Gift
shop, coffee and snacks. Free
Wi-Fi; opens 9:00am to 5:00pm
daily; closed Thanksgiving and
Christmas Day.
4437 Georgia Rd.
Franklin, NC 28734
828-369-9606
visitsmokies.org



Photo by Eric Haggart Imagery



Our tiny homes can deliver satisfaction and relaxation to families, singles, and retired couples. Working with less than 700 square feet of space, our team will help you find the perfect tiny home from our large inventory and custom design options.

Tour Over 30 Tiny Homes!



Cascade

2 Bed | 1.5 Bath



Smoky

1 Bed | 1 Bath

4075 Georgia Road, Franklin, NC 28734
www.tinylife.com • 828-977-6410



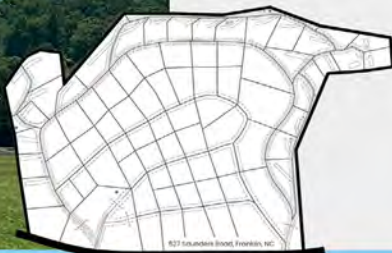
Peaceful Meadows

Franklin, NC



Amenities

Gated Entry
Clubhouse
Fitness Room
Paved Roads
Private Parking
Pavilion
Pickle Ball Court



Pick a Spot for Your Tiny Life® Home!

828-882-2474 | peaceful-meadows.com

THE HEART OF YOUR **SMOKIES ADVENTURE**



[EXPERIENCEFRANKLINNC.COM](https://ExperienceFranklinNC.com)

FRANKLIN

NORTH CAROLINA

HIKING CEM MINING WATERFALLS KAYAKING
SCENIC DRIVES CRAFT BREWERIES REST & RELAXATION

*Your
Gateway
to
Adventure*

VISITFRANKLINNC.COM

NANTAHALA

NORTH CAROLINA

Land of the Moon Day Sun

HIKING FLY FISHING RAFTING KAYAKING
SCENIC DRIVES WATERFALLS REST & RELAXATION



VISITNANTAHALANC.COM

Open to Experience **HAYESVILLE & BRASSTOWN**

15 MILES  FROM MURPHY

133 MILES  TO ATLANTA



35 MILES FROM FRANKLIN, NC

REFERRED TO AS: "THE SECRET JEWEL OF
WESTERN NC"

2 VIBRANT COMMUNITIES:

★ **HAYESVILLE** – Packed with boating, hiking, mountain biking and fishing spots. Lake Chatuge is a water haven. See a Pumpkin fly at the Pumpkin Chunkin Festival
claychambernc.com

★ **BRASSTOWN** – Scenic Area. John C. Campbell Folk School offers a variety of classes, 800-365-5724 • folkschool.org

HIDDEN GEMS AND POPULAR ATTRACTIONS:

★ **THE COPPER DOOR** – Named one of the best restaurants in the country. thecopperdoor.com

★ **GOLDHAGEN STUDIO GALLERY** – International glass-blowing artist. Has created pieces for Coca-Cola, Walt-Disney, Philips Arena. 828-389-8847 • goldhagenartglass.com

★ **CHATUGE DAM & RECREATION AREA** – Hike and see the Dam. Picnic area, playground, easy walk or run. Facilities available. 1407 Chatuge Dam Rd., Hayesville.

GREATSMOKIES.COM

ARTS/CRAFTS

John C. Campbell Folk School

Since 1925.

Offering courses in craft, music and dance. On-campus housing. Visitors welcome.

1 Folk School Rd.

Brasstown, NC 28902

828-837-2775 • 800-365-5724

folkschool.org



Historic Hayesville

Historic Hayesville Centennial Exhibit featuring downtown businesses, history & events.

116 Sanderson St.

Hayesville, NC 28904

828-389-1862

historichayesvilleinc.com

DINING

The Copper Door

Fine dining featuring aged steaks, fresh seafood, full bar, award-winning wine list; Reservations Recommended.

2 Sullivan St.

Hayesville, NC 28904

828-389-8460

thecopperdoor.com

CULTURAL/MUSEUM

Clay County Historical & Arts Museum

Dedicated to preserving local history & culture at the Historical Jail. We are open Memorial Day Weekend through Labor Day Weekend.

We will be open Tuesday-Saturday from 10am-4pm. During September & October, we will be open on Fridays & Saturdays only.

21 Davis Loop

Hayesville, NC 28904

828.389.6814

clayhistoryarts.org

EVENT/WEDDING

Clay County Courthouse/ Beal Center

Restored 1888 courthouse in the square, perfect venue for weddings, family gatherings, celebrations of life.

246 Main St.

Hayesville, NC 28904

828-415-1623

bealcenter.org



For 100 years, the Folk School has transformed lives and brought people together in a nurturing environment for experiences in learning and community life that spark self-discovery.



800 Classes | 50 Subjects
Weeklong & Weekends

FOLKSCHOOL.ORG/SMOKYMTN

LODGING

Deerfield Inn

All rooms overlook beautiful Lake Chatuge. Amenities include mini-fridge, microwave, Wi-Fi, satellite TV, Non-smoking. Pets welcome.

40 Chatuge Ln.

Hayesville, NC 28904

828-389-8272

deerfield-inn.com

Hinton Rural Life Center

Retreat. Reflect. Renew.

Hinton Center

accommodations venue

helps fund healthy, effective communities of faith.

Pets welcome.

2330 Hinton Center Rd.

Hayesville, NC 28904

828-389-8336 • 866-389-8336

hintoncenter.org

Magical Mountain Resorts, The Enchanted Forest

Each cabin is uniquely designed. Alice's White Bunny Cottage, the Red Queen's Cottage, Snow White's Cottage, the Candy Cabin, or the Sugar Shack, Double Decker Bus, RV Sites and more.

9594 Tusquittee Rd

Hayesville, NC 28904

(941) 276-8142

magicalmountainresorts.com

CAMPGROUND

Sundowner RV Village

Adult campground/park model village nestled in the NC

Mountains near Lake Chatuge.

42 Sundowner Circle

Hayesville, NC 28904

828-389-3241

joyce@sundownerrvillage.net

sundownerrvillage.net

OUTDOOR ACTIVITY

Waterfall Byway

Winding 98 miles

and featuring more

than 200 distinct

waterfalls, it begins at U.S. 64's intersection with NC 215.

98 miles • 3.5 hours

Travels through Clay,

Jackson, Macon and

Transylvania counties.

ncdot.gov/travel/scenic



Jackrabbit Mountain Trail

15 miles, easy, fishing, hiking, biking. Trailhead: Jackrabbit Recreation Area. Trail offers an excellent view of Lake Chatuge and provides lake fishing access as well. At Lake Chatuge get on NC 175, turn onto Jackrabbit Road, signed parking area on left.

Nantahala National Forest

Open year-round picnic, restrooms, drinking water, hiking trail.



Lake Chatuge

Lake Chatuge's abundance of scenic coves along its 133 mile shoreline are great for fishing, swimming, boating, camping and other water sports.

Fires Creek Area Trails

0.3–5.4 miles, easy/moderate/difficult, fishing, hiking, biking, horse trails

Trailhead: Fires Creek

Recreation Area. Offers a

number of excellent trails,

including a designated

horseback trail and horse

camp. Cover Loop is an

easy 0.3-mile trail that is

handicap-accessible. Other

popular foot trails include

Leatherwood Loop Trail (0.7

mile), Leatherwood Branch

Access (3.5 miles) and Cover

Trail, which follows Fires Creek

for approximately five miles.

Leatherwood Falls

25' falls visible from picnic area.



Quannasse Path

Two-mile Cherokee History

Trail, downtown, depicting

culture of Cherokee people at

five historical sites.

SHOPPING

The Crow Apothecary & Tea Shoppe

Discover tranquility in

Hayesville, NC. Enjoy holistic organic teas, herbal remedies, and unique handcrafted gifts.

768 Oak Forest Rd

Hayesville, North Carolina

[facebook.com/lavender-](https://facebook.com/lavender-crowapothecary)

[crowapothecary](https://facebook.com/lavender-crowapothecary)

(706) 889-0674

Lazy Llama

Restoring unwanted furniture into better-than-new modern designs. Shop unique crafts and gifts.

100 Sanderson St

Hayesville, NC 28904

facebook.com/lazylamahome

(561) 445-5221

Papaw's Harvest

Papaw's Harvest is a family-owned beekeeping business in North Carolina, specializing in pure, locally sourced honey.

papawsharvest.square.site/

facebook.com/papawsharvest

(678) 276-6549

SPA & WELLNESS**Bauer Brand**

Bauer Brand Cannabis specializes in the production and sale of culturally correct cannabis products.

43 Main St.

Hayesville, North Carolina

(828) 371-0752

THEATER**Peacock Performing Arts Center**

Events, children's plays, dance, concerts, shows, entertainment.

301 Church St. Hayesville

(828) 389-2787

thepeacocknc.org

VISITOR INFORMATION**Clay County Chamber of Commerce**

Chamber of Commerce and visitors center for information.

96 Sanderson St.

Hayesville, NC 28904

828-389-3704

claychambernc.com

Clay County Communities Revitalization Association

Visit historic courthouse, music sculpture, Cherokee homestead. Hike/Bike 15-mile Jackrabbit Trails & Quanassee Path.

PO Box 1533 Hayesville

828-389-6531 • cccra-nc.org

Good For The Soul!

**CLAY
COUNTY**
NORTH CAROLINA

claychambernc.com

BRASSTOWN • HAYESVILLE • SHOOTING CREEK
TUSQUITTEE • WARNE • SWEETWATER • ELF

CLAY COUNTY TRAVEL & TOURISM

828-389-3704

facebook.com/claychambernc

Open to Experience HIGHLANDS, CASHIERS, SAPPHIRE & SCALY MOUNTAIN

37 MILES ← FROM SYLVA

19 MILES → TO FRANKLIN



ONLY 2.5 HOURS FROM ATLANTA, GEORGIA

5 VIBRANT COMMUNITIES:

- ★ **CASHIERS** – Offers gorgeous scenery and waterfalls.
- ★ **GLENVILLE** – Popular lakeside vacation community, Lake Glenville.
- ★ **HIGHLANDS** – Quaint town surrounded by Nantahala National Forest and situated at an elevation of 4,118 feet.
- ★ **SAPPHIRE** – Known for resorts, hiking, forests, stunning waterfalls. 8 miles from Cashiers.
- ★ **SCALY MOUNTAIN** – Winter and summer tubing, ice skating, gem mining, trout fishing, hiking trails. 6 miles from Highlands. scalymountain.com

HIDDEN GEMS AND POPULAR ATTRACTIONS:

- ★ In the heart of Great Smoky Mountains, these communities offer fine dining, antique shops, golf courses, boutiques, art galleries and breweries
- ★ **THE SHADOW OF THE BEAR** – Witness this natural phenomenon from February–March and in November.
- ★ **LAKE GLENVILLE** – Public beach access, swimming, boating

HIGHLANDSCHAMBER.ORG
CASHIERSAREACHAMBER.COM

BLUEWAYS

Lake Glenville

Lake Glenville is a reservoir located 8 miles from Cashiers, North Carolina. It's a tourist destination for kayakers, canoers, water skiers and pleasure-boat enthusiasts who found a cool retreat in the Southeast's otherwise boiling summers



CULTURAL/MUSEUM

Highlands Museum & Historical Village

A village composed of several restored buildings, with historical exhibits in the museum.

524 N 4th St.

Highlands, NC 28741

828-787-1050

highlandshistory.com

Cashiers Historical Society

Exhibiting the largest known collection of handcrafted "plain-style" furniture, on-site walking trails, historic schoolhouse, pavilion with restrooms, picnic tables, Civil War Trail.

1940 NC 107 S

Cashiers, NC 28717

(828) 743-5471

cashiershistoricalsociety.org

DINING

Hotel Cashiers

The Kitchen & Bar at Hotel Cashiers offers craft cocktails, fine wines, beer, and chef-created dishes in a stylish yet casual setting. Private events available!

Cashiers, NC 28717

828-743-7706

hotelcashiers.com

The Vineyard at High Holly

Open Wednesday through Sunday from 12pm–6pm. Enjoy amazing wines, beer, and cocktails while you relax with friends. No reservations required.

37 High Holly Rd,

Scaly Mountain, NC 28775

(828) 482-5573

thevineyardathighholly.com/



GEM MINES & SHOPS

Jackson Hole Trading Post

Cleanest mine around. Help for inexperienced. On Waterfall drive between Franklin and Highlands. Handicap-accessible. Pets welcome. Open May 1–Dec. 1.

9770 Highlands Rd. Hwy 64 E
Highlands, NC 28741

828-524-5850

jacksonholegemmine.com

LODGING

Hotel Cashiers

A pet friendly boutique inn and wine bar located in the center of Cashiers.

7 Slab Town Rd. Cashiers

828-743-7706

hotelcashiers.com

Fire Mountain Inn, Cabins and Treehouses

A secluded mountaintop hideaway on hundreds of acres with breathtaking long-range mountain views. Pets welcome.

700 Happy Hill Rd. Highlands

800-775-4446 • firemt.com

The Vineyard at High Holly

The Vineyard at High Holly is a 28-acre private retreat in Scaly Mountain, NC with phenomenal views of the Blue Ridge Mountains.

37 High Holly Rd,

Scaly Mountain, NC 28775

(828) 482-5573

thevineyardathighholly.com/

OUTDOOR ACTIVITY

Plateau Playground**Sky Valley Country**

Club: Public golf course

Highlands Aerial Park:

Zipping adventure

Highlands Outpost:

Tubing and alpine coaster

Scenic Cabin Retreat:

The Vineyard at High Holly



OUTDOOR ACTIVITY

Highlands

Outpost

Snow tubing, ice skating, summer tubing, gem mine, trout fishing, gift shop, café, family-friendly.

7420 Dillard Rd.

Scaly Mountain, NC 28775

828-526-3737

highlandsoutpost.com



Highlands

Aerial Park

Ziplines! Located at an elevation of 3,620

feet, high atop

High Holly Mountain.

9625 Dillard Rd.

Scaly Mountain, NC 28775

828-526-8773 • 855-947-6344

highlandsaerialpark.com



Waterfall Byway

Strangely powerful

or eerily tranquil,

waterfalls do have

a way of casting a spell. If you

happen to be a fan, this is

your byway. Winding 98 miles

and featuring more than 200

distinct waterfalls, it begins at

U.S. 64's intersection with NC

215. 98 miles • 3.5 hours



Whiteside Mountain

(Nantahala

National Forest)

Open year-round.

Hiking trails, scenic views.



Bridal Veil Falls

Visible from U.S. 64,

this beautiful waterfall

drops 120 feet.



Cullasaja Falls

Visible from U.S. 64, this 250-

foot waterfall is accessible by a

0.5-mile steep trail.

Dry Falls

3.5 miles west of Highlands, a

paved walkway takes you to

and through the 75-foot falls

Whitewater Falls

Open year-round

Restrooms, hiking trails, scenic

views. At 411 feet, this is the

highest waterfall in the eastern

U.S. From U.S. 64 to Sapphire,

turn onto NC 281. Entrance is in

about 8 miles.

Panthertown Valley

Nearly 30 miles of trails

branches off from the area's

old main roads, 21 of which are

open to bikes.

Whiteside

Mountain Trail

2 miles, easy

Trailhead: Whiteside Mountain

parking area. The loop trail

features a view of the highest

vertical drop in the eastern U.S.

at 750 feet.



THEATER

Mountain Theatre Company

Mountain Theatre Company

is Western North Carolina's

premier professional theatre,

producing Broadway-caliber

productions from May-Dec.

507 Chestnut Street

Highlands, NC 28741

(828)526-2695

mountaintheatre.com/

VISITOR INFORMATION

Cashiers Area Chamber of Commerce

Visit for area information,

maps, event calendars, dining,

shopping, recreation guides

and more.

202 Hwy U.S. 64 W

Cashiers, NC 28717

828-743-5191

cashiersareachamber.com

Highlands Chamber of Commerce & Visitor Center

Conveniently located on Hwy

64 to help visitors plan their

stay! (Free parking

behind building)

108 Main St.

Highlands, NC 28741

828-526-2112

highlandschamber.org

ANNUAL EVENT

Highlands Motoring Festival

Highlands, NC: Annual

automobile related event

spanning four days, showcasing

collectible and concours

caliber cars. June 12-15, 2025.

501 c (3)



PLAY AT A HIGHER LEVEL

The Atlanta side of Highlands offers a plethora of fun! Featuring the only public **golf course** on the Plateau, adventures at **Highlands Aerial Park**, the highest rated zipline adventure park, with family challenge courses, giant swing, guided UTV tours, free nature trails, and **Highlands Outpost**, with year round mountain coaster, tubing, gem mining, and cafe. **Waterfalls** (Estatoah, Mud Creek, Middle Creek), **Hiking Trails** (Bartram, Sky Valley, High Holly), and **Scenic Overlooks** offer a great mountain experience for all ages.

BRING YOUR Golf Game TO GREAT HEIGHTS

3500 FEET ELEVATION | OPEN YEAR ROUND, 7 DAYS A WEEK
568 SKY VALLEY WAY #1, SKY VALLEY, GA 30537
706.746.5302 | SkyValleyCountryClub.com



ELEVATE YOUR family fun!



MOUNTAIN COASTER
EXTREME TUBING SLIDE
TROUT FISHING
GEM MINING

HighlandsOutpost.com

7420 Dillard Road | Scaly Mountain, NC 28775
828-526-3737



Highlands AERIAL PARK

ZIPLINING



Thrilling Adventures for All Ages
Unequaled views. Unbeatable fun.

OPEN EVERY DAY
9625 Dillard Road
Scaly Mountain, NC 28775
HighlandsAerialPark.com
828-743-8245



THE
Vineyard
AT HIGH HOLLY

37 HIGH HOLLY RD, SCALY MOUNTAIN, NC 28775
828.482.5573 | www.thevineyardathighholly.com



Open to Experience MURPHY & ANDREWS

55 MILES ← FROM FONTANA

15 MILES → TO HAYESVILLE



45 MILES FROM FRANKLIN, NC

FIND YOUR ADVENTURE OR TAKE IN THE
BREATHTAKING MOUNTAIN VIEWS

2 VIBRANT COMMUNITIES:

- ★ **MURPHY** – Situated at the confluence of the Hiwassee & Valley rivers. Filled with mountains, lakes, rivers and streams providing breathtaking views.
- ★ **ANDREWS** – Marvel at the beautiful Andrews Valley. Unlimited outdoor activities. Some structures are listed on the National Historical Register.

HIDDEN GEMS AND POPULAR ATTRACTIONS:

- ★ **FIELDS OF THE WOOD** – Celebrate Christian heritage and see the Ten Commandments built on a mountain. Picnic area. Free admission. cogop.org
- ★ **HANGING DOG RECREATION AREA** – Five minutes from Murphy, great destination for scenic drive or a day outing. Offers year-round access to Hiwassee Lake. Boating, fishing and picnicing. fs.usda.gov
- ★ **HERITAGE PARK DISC GOLF COURSE** – The park offers public 18-hole disc golf course, jogging, walking and open space. 155 Wilson St. Andrews, NC • udisc.com/courses/heritage.park

VISITCHEROKEECOUNTYNC.COM
ANDREWSCHAMBER.COM
CHEROKEECOUNTYCHAMBER.COM

AGRITOURISM

Visit NC Farms

Find area agritourism, including fresh local food, activities, farmer's markets, trails, and local shopping. Contact Cherokee County Chamber of Commerce at 828-837-2242 or info@cherokee-county-chamber.com for more information.

The Murphy Farmer's Market

100% locally sourced crafts & produce. Find over 40 vendors featuring fresh veggies, fruits, livestock, plants, jams, jellies, goats milk, cheese, meats, chicken, baked goods, and honey. Downtown Murphy at the L & N Depot. 9:00 am–1:00 pm. April–Oct.
4 Railroad St. Murphy
828-644-8677

ARTS/CRAFTS

Cherokee County Arts Council

The CCAC offers monthly gallery exhibits and original art for sale in the Open Studios, as well as musical performances and other regular events!

John C. Campbell Folk School

Since 1925. Offering courses in craft, music and dance. On-campus housing. Visitors welcome.
1 Folk School Rd.
Brasstown, NC 28902
828-837-2775 • 800-365-5724
folkschool.org

Olive's Porch

A Folk School experience in downtown Murphy featuring classroom space, a retail shop showcasing the work of Appalachian artists, and a studio space dedicated to the Artists in Residence program.
27 Peachtree St. Murphy
828-837-1885 • olivesporch.org

BREWERY/WINERY

FernCrest Winery

Handcrafted wines, wine tastings, wine by bottle or glass, local cheeses, jams, art, wine merchandise, custom baskets.
1060 Main St. Andrews
828-321-1600
ferncrestwinery.com

Hoppy Trout Brewing Company

Microbrewery, handmade Sicilian brick-oven pizza, appetizers, salads.
911 Main St. Andrews
828-835-2111
hoppytroutbrewing.com

CASINO

Harrah's Cherokee Valley River Casino and Hotel

60,000 square feet of state-of-the-art gaming space, slots, traditional table games, food market, restaurant.
777 Casino Pkwy Murphy
828-422-7777
caesars.com/harrahs-cherokee-valley-river

CULTURAL/MUSEUM

Andrews Art Museum

Exhibits featuring local and regional artists. Corner of Chestnut and Third streets.
125 Chestnut St.
Andrews, NC 28901
828-361-2781
www.vcahs.com

Cherokee County Historical Museum

Artifacts and exhibits showcasing local history, Trail of Tears Interpretations Center.
87 Peachtree St.
Murphy, NC 28906
828.837.6792
cherokee-county-nc.gov/183/historicalmuseum

Andrews Trail Tour



CULTURAL/MUSEUM

Cherokee County Arts Council

The CCAC offers monthly gallery exhibits and original art for sale in the Open Studios, as well as musical performances and other regular events!

33 Valley River Avenue
Murphy, NC 28906
(828) 835-0550
cherokeeartscouncil.org

DINING

Harrah's Cherokee Valley River Casino and Hotel



Food market.
777 Casino Pkwy
Murphy, NC 28906
Nathan's Famous
Panda Express
Earl of Sandwich
Starbucks
Moe's Southwest Grill

The Landing Café, Ultra Star Multi-Tainment Center

Hearty southern breakfast, burgers to crab cakes for lunch & dinner, bowling food, beverages, bar.
777 Casino Pkwy
Murphy, NC 28906
828-422-5309
valleyriver.ultrastarn.com/food

Hoppy Trout Brewing Company

Microbrewery, handmade Sicilian brick-oven pizza, appetizers, salads.
911 Main St.
Andrews, NC 28901
828-835-2111
hoppytroutbrewing.com

Hanging Dog General Store & Cafe

Hanging Dog General Store & Cafe has been serving the community for over 75 years, a local gathering place we provide good food and even better times.
2345 Hanging Dog Rd
Murphy, North Carolina 28906
(929) 837-3707
facebook.com/hangingdoggeneralstore

Julie's Place

A casual dining restaurant with an extensive menu, focus of comfort food but also extensive menu of wraps, burgers, salads, etc.
30 NC Hwy 141
Murphy, NC 28906
828-837-8881
juliessplacerestaurant.com

EVENT/WEDDING

Hawkesdene



Luxury private mountain estate on 70 acres for groups. Destination weddings, family reunions, retreats, 41 bedrooms.
381 Phillips Creek Rd.
Andrews, NC 28901
828-321-6027 • 800-447-9549
hawkesdene.com

McGuire's Millrace Farm

Wedding & Elopement Venue. Special Events, Celebrations, Galas. Seating for up to 200. Lodging: 6 rooms/30 people.
600 Hendrix Rd.
Murphy, NC 28906
828-837-0015
mcguiresmillracefarm.com



AndrewsValleyRailTours.com



(828) 557-4021

Experience the beauty of the Great Smoky Mountains Railroad tracks with a Guided RailBike adventure in Andrews, NC, for an unforgettable outdoor experience.

FAMILY ATTRACTION

Andrews Valley Rail Tours

Andrews Valley Rail Tours offers RailBike rides and Speeder Cart Tours in Andrews, NC. Enjoy the beauty of the valley from a different perspective.

345 Locust St.

Andrews, NC 28901

828-557-4021

andrewsvalleyrailtours.com

Ultra Star Multi-Tainment Center

Harrah's Cherokee, hottest new arcade games, Strikes Lounge, boutique bowling, billiards, packages, events, parties.

777 Casino Pkwy

Murphy, NC 28906

828-422-5306 • ultrastarnc.com

West Tubing Co.

West Tubing Company is an outdoor adventure center located on Brasstown Creek in Warne, NC. We offer camping, glamping, shopping and venue rentals.

6175 Old Hwy 64 W

Warne, NC 28909

(828) 389-8823

westtubingcompany.com

LODGING

Quality Inn

The Quality Inn in Andrews is located in the foothills of the Great Smoky Mountains and is minutes away from Harrah's Cherokee Valley River Casino. The hotel offers free hot breakfast and is close to nearby attractions.

138 Upper Valley River Ln.

Andrews, NC 28901

828-321-2176

choicehotels.com/north-carolina/

andrews/quality-inn-hotels

CAMPGROUND

The Holler

The Holler is a hostel and vacation rental welcome to all. We are ADA accessible, as well as dog friendly, so no need to leave Fido at home.

4021 Pisgah Rd

Andrews, NC 28901

(720) 301-4130

thehollerhostel.com/

**Mountain Riders River Front Camping**

Cabins, spacious RV sites & tent sites all directly on the river.

2380 Stewart Rd.

Andrews, NC 28901

Edchowning@bellsouth.net

Persimmon Creek RV Park

Prettiest RV Park in Western North

Carolina w/19 sites,

Fishing, Firewood, Creeks, & pet friendly! Blue Ridge, GA is 21 miles away! Come on out!

200 Sunny Point Rd. Murphy, NC

828-644-5800

Persimmoncreekcampground.com

OUTDOOR ACTIVITY

The Benton MacKaye Trail

Approximately 300 miles in length and starts 0.2 miles down the Appalachian Trail from Springer Mountain, GA traveling north through TN and NC. Features many scenic views of surrounding mountains, waterfalls, streams and wildlife. For more information visit bmta.org and Facebook.

Welch Farm River Access

This 57-acre property along the Valley River is conserved and open to the public for fishing, walking, wildlife viewing, or as a boat access. A portion is leased to local farmers and a portion is left wild for the numerous bird species you will encounter. Located off Hwy 74 between Andrews and Murphy, and designated by a brown DOT sign. mainspringconserves.org

Mountains-to-Sea Road Bike Route

Murphy is the start of this on-road 736-mile multi-use bicycle route. The route crosses the entire state, from west to east, through the mid-section of North Carolina. Routes are detailed in the list of maps provided by the North Carolina Department of Transportation. Maps can be ordered at no cost. ncdot.gov/bikeped

**TransAmerica Trail**

transamtrail.com

OUTDOOR ACTIVITY

Piney Knob Bike Trails

Wonderful 13.5-miles of trails for hikers and cyclists alike. When on Hwy 74, heading toward Murphy, take a right at the Casino intersection onto Regal Rd. Travel about .5 miles until you reach Piney Knob Rd on the right. This is a narrow gravel road about 3 miles long to get to the parking area of the trails.

www.pineyknobtrails.com

Murphy River Walk and Canoe Trail

Beautiful greenway with 2+ miles of walking trails. The trail follows the Valley River and the Hiwassee Rivers. Whether you take the trail on foot or put in for an easy paddle along the canoe trails, you'll enjoy the ecology and cultural heritage along the way.

Cherokee Lake Trail (Nantahala National Forest)

Open year-round. Picnic, restrooms, drinking water, handicap-accessible, fishing.



REAL ESTATE

Carolina Mountain Homes

Experienced real estate since 1978. Great customer service, marketing and negotiating. Licensed in North Carolina and Georgia. 5530 W U.S. 64 Hwy. Murphy, NC 28906 828-837-7322 carolinamtnhome.com



Big Realty!

Real Estate Company with Land & Home Packages. Cherokee County NC is a mountain community with cabins and chalets. 889 West U.S. 64 Murphy 828-837-6464 • bigrealtync.com

VISITOR INFORMATION



Murphy Visitor Center and Andrews Rest Area

Tourism information center with locations in Murphy, NC and Andrews, NC. 20 Tennessee St. Murphy 50 Cover Ave. Andrews 828-557-0602 • visitccnc.com

Andrews Chamber & Welcome Center

Historic Downtown, RailBike Tours, Rafting, Biking, Hiking, Fishing, Shops, Restaurants, Wineries, Breweries, Festivals, Wagon Train. 955 Main St. Andrews 828-321-3584 visitandrewsnc.com

Cherokee County Chamber of Commerce and Welcome Center

On Hwy 64. Visit for resources in our area! Parking for cars and RVs. Pets welcome. 805 U.S. Hwy 64 W Murphy, NC 28906 828-837-2242 CherokeeCountyChamber.com



NC Rest Area

Travel Information available Cherokee County at Andrews US Hwy 19/129

Carolina Mountain Homes

Real Estate since 1978

828-837-7322

www.CarolinaMtnHome.com

PEACEFUL,
Easy, FEELING.

Visit Cherokee County
www.visitccnc.com



Cherokee County, NC
TOURISM DEVELOPMENT AUTHORITY

Open to Experience SYLVA, DILLSBORO, BALSAM & CULLOWHEE

16 MILES  FROM CHEROKEE

38 MILES  TO HIGHLANDS



21 MILES FROM FRANKLIN, NC

THESE TOWNS ARE SURROUNDED BY NANTAHALA NATIONAL FOREST

4 VIBRANT COMMUNITIES:

- ★ **BALSAM** – Includes the highest point along the Blue Ridge Parkway in Jackson County.
- ★ **CULLOWHEE** – Home of Western Carolina University which offers robust performing arts scene!
- ★ **DILLSBORO** – Nestled along the Tuckasegee River, it's famous for pottery shops, and special events: ColorFest, WNC Pottery Festival & December Lights & Luminaries.
- ★ **SYLVA** – Sylva's Main Street frames the most photographed Courthouse in NC.

HIDDEN GEMS AND POPULAR ATTRACTIONS:

- ★ **ALE TRAIL** – The famous Ale Trail's main hub is downtown Sylva with 10 craft breweries. Field Guide: [DiscoverJacksonNC.com/AleTrail](https://www.discoverjacksonnc.com/AleTrail)
- ★ **HIKE PINNACLE PARK** – See panoramic views of Sylva, streams & waterfalls. Strenuous Terrain.
- ★ **GREETINGS FROM SYLVA MURAL** – Selfie time on Mill Street across from White Moon Coffee
- ★ **THE AMERICAN MUSEUM OF THE HOUSE CAT** – Private collection. 828-476-9376 [wnccatmuseum.org](https://www.wnccatmuseum.org)
- ★ **MOUNTAIN HERITAGE CENTER** – A regional resource for education, research and history. Located at Western North Carolina.

DISCOVERJACKSONNC.COM
VISITDILLSBORO.ORG
MOUNTAINLOVERS.COM

AGRITOURISM

The Whee-Market-Cullowhee's Craft & Farmer's Market

All year round, every Tuesday.
3pm - 6pm.

113 Market St.
Cullowhee, NC 28723
828-476-0334
cullowheemarket.org

Jackson County Farmer's Market

Farmer's market offering locally grown and crafted products.

April–October: Wednesdays
3:30-6:30 at Innovation Station,
Dillsboro. Saturdays 9-Noon at
Bridge Park, Sylva. November–
March, Saturdays at Bridge
Park, Sylva.

23 Central St.
Sylva, NC 28779
828-393-5236

[facebook.com/
TheJacksonCounty
FarmersMarket](https://facebook.com/TheJacksonCountyFarmersMarket)

ARTS/CRAFTS

Dogwood Crafters

Traditional and contemporary
arts and crafts can be found
within the shop's eleven rooms.
90 Webster St.

Dillsboro, NC 28725
828-586-2248
dogwoodcrafters.com

BLUEWAYS

Tuckasegee River

The Tuckasegee,
is a popular river
for tubing, floating,
canoeing, rafting
and kayaking.
smokymountainblueways.com



CULTURAL/MUSEUM

American Museum of the House Cat

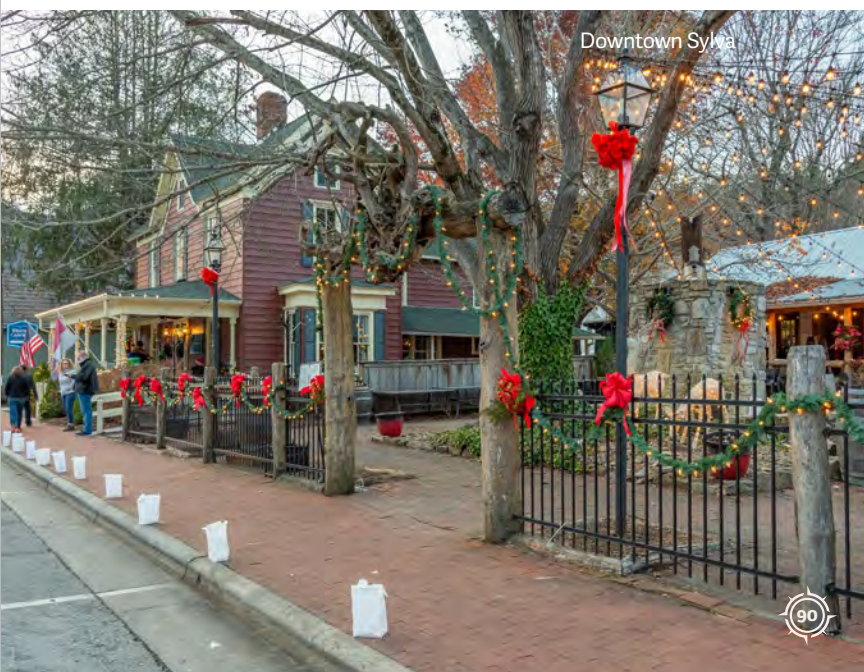
Experience a multi-media collection of feline antiques sure to delight, entertain, and educate the cat enthusiast.

5063 US 441 Hwy S
Sylva, NC 28779
828-476-9376
wnccatmuseum.org

**Mountain Heritage Center**

Extensive displays of Western North Carolina and Southern Appalachian history.
Western Carolina University
Second Floor Hunter Library
176 Central Dr. #240 Cullowhee,
NC 28723

Call to confirm hours
828-227-7129
wcu.edu/engage/mountain-heritage-center/about-us/index.aspx



Downtown Sylva

DINING

Blue Ridge Bootleg

Enjoy fresh, ethical coffee, live music, and a cozy, rustic ambiance in Sylva, NC. Perfect for relaxing or catching up with friends.

582 W Main St Sylva
(828) 307-2016
blueridgebootleg.com

City Lights Cafe

Breakfast, lunch, dessert, Sunday Brunch, coffee, espresso, beer, wines, pet-friendly patio, gluten-free, vegetarian options, catering, Wi-Fi.

3 E Jackson St.
Sylva, NC 28779
828-587-2233 • citylightscfe.com

Jack the Dipper Ice Cream

Home of the Warm Waffle Cone.
170 E Sylva Shopping Center
Sylva, NC 28779
828-586-9441

Creekside Oyster House and Grill

Craving delicious seafood? Enjoy creekside dining, with fresh oysters and seafood, also steaks, chicken, sandwiches and burgers and more, full bar and weekly specials.
219 West Main Street
Sylva, NC 28779
Creeksideoysterhouse.com

Lulu's On Main

Award winning dining, featuring specials including steaks, seafood, chicken and vegetarian favorites, scrumptious homemade desserts. Covered outdoor seating.
678 W Main St.
Sylva, NC 28779
828-586-8989 • lulusonmain.com

BREWERY/WINERY

Innovation Brewing

Taproom with house-made craft beers & guest taps including hard cider & wine! Food truck & pizza shop on-site.
414 W. Main Street
Sylva, NC 28779
innovation-brewing.com/
(828) 586-5918

Innovation Station

An Innovation Brewing taproom & event space. Craft beer, hard cider, wine, & more on tap! Rotating food trucks.
40 Depot Street
Dillsboro, NC 28779
Innovation-brewing.com
(828) 226-0262

EVENT/WEDDING

Baxley's Chocolates

We make premium, traditional handmade chocolates and brittles, crafting sweet memories is our business!
546 W Main St. Sylva
828-631-3379
baxleyschocolates.com



FAMILY ATTRACTION

American Museum of the House Cat

Experience a multi-media collection of feline antiques sure to delight, entertain, and educate the cat enthusiast.
5063 US 441 Hwy S Sylva
828-476-9376
wnccatmuseum.org



American
Museum
of the
House Cat
**NOW
OPEN**

wnccatmuseum.org

(828) 476-9376





828.586.3315
2807 Hwy 74-East
Sylva, NC 28779

stay on pointe.™

At Clarion Pointe®, we provide elevated essentials in just the right places for a sharper, more connected stay. Enjoy upscale accommodations with contemporary design touches, on-demand connectivity, modern fitness essentials, flexible meeting space, and curated food and beverage options. Rewind by the fire pit or take a dip in our seasonal outdoor pool. Being the closest hotel to the entrance of the Blue Ridge Parkway means you'll have easy access to outdoor adventure!



LODGING

Best Western Plus River Escape Inn & Suites

Immerse yourself in scenic beauty, unwind in modern comfort, and create unforgettable memories along the river's edge. Your perfect escape awaits!

248 WBI Dr.

Dillsboro, NC 28725

828-586-6060 • 800-780-7234

bwriverscape.com

Holiday Inn Express & Suites Sylva-Western Carolina Area

Newly renovated rooms for a fresh experience with unmatched hospitality. Indoor pool & hot tub. Full, hot breakfast bar with signature cinnamon rolls.

26 Rufus Robinson Rd.

Sylva, NC 28779

828-631-1111 • 800-HOLIDAY

hixsylva.com

Clarion Pointe Sylva Near Cherokee Area

Elevate your stay with upscale accommodations while you enjoy a delicious breakfast as well as the outdoor pool & fire pit. Closest hotel to the Blue Ridge Parkway.

2807 Hwy 74 E

Sylva, NC 28779

828-586-3315

choicehotels.com/nc237

Comfort Inn

Close to the beautiful Smoky Mountains, Western Carolina University, Balsam Mountain Preserve, Nantahala Forest, Cherokee, hiking, and fishing.

1235 E Main St.

Sylva, NC 28779

828-477-4950 • 800-300-8800

choicehotels.com/nc732



Outland Chalet & Suites

Outland Great Smoky Mountain is a Private 22 acre retreat offering Luxury Spa Suites, a 7 bedroom private residence. On-site trails with amazing views, pond and firepit.

285 Lone Oak Dr

Whitter, NC 28789

828-586-0251 • Stayoutland.com

Moonshine Creek Campground

Cool and secluded on mountain stream five minutes from Blue Ridge Parkway, RV, tent, cabins. Pets welcome.

2486 Dark Ridge Rd.

Sylva, NC 28779

828-586-6666

moonshinecreek.com



OUTDOOR ACTIVITY

Appalachian Mural Trail

Appalachian historical murals within driving distance of the Blue Ridge Parkway. Map has parkway milemarker directions. 828-293-2239 • muraltrail.com

OUTDOOR EVENTS

Concerts on the Creek

Free and open to the public. Donations encouraged. Bring a chair or blanket and enjoy the shows. No alcohol, smoking or coolers. Dogs must be on a leash. Food and Music. Concerts are located at the Bridge Park gazebo in Sylva every Friday from 7–9 p.m., Memorial Day through Labor Day. Check website for current details. 828-586-2155 mountainlovers.com/on-the-creek

Smoky Mountain River Adventures

Perfect for beginner and intermediate paddlers. Bring the family for a scenic river trip! Pets welcome. 5036 U.S. Hwy 74 E (Check Google Maps) Whittier, NC 28789 828-586-5285 • 888-785-2662 smokymountainriveradventures.com

REAL ESTATE

Western Carolina Properties – Dillsboro

Real estate in Sylva, Cullowhee, Bryson City, Franklin, Webster, and throughout WNC Mountains. 78 Front St. Dillsboro, NC 28725 828-586-3442 • searchwnc.com

SHOPPING

Baxley's Chocolates

We make premium, traditional handmade chocolates and brittles, crafting sweet memories is our business! 546 W Main St. Sylva, NC 28779 828-631-3379 baxleyschocolates.com

**Lazy Bear General Store**

Gifts, souvenirs, gourmet specialties, sample tastings, dressings, jams, sauces, local roasted coffee, home accents. 104 Front St. Dillsboro, NC 28725 828-356-6198 thelazybeargeneralstore.com

The Mountain Laurel Shop

Mountain Laurel Shop offers unique gifts, nostalgic candies, and local handcrafted items. 556 West Main Street Sylva, NC 28779 (828) 631-3047 mountainlaurelgiftshop.com



546 West Main St.
Sylva, NC 28779
(828) 631-3379
BaxleysChocolates.com

BAXLEY'S Chocolates

Handmade Small Batch Chocolates

Crafting Sweet Memories

Open Monday–Saturday



**Best
Western
PLUS[®]**

248 WBI Drive, Dillsboro, NC 28725

828.586.6060

bwriverescape.com



AN **IHG**® HOTEL

26 Rufus Robinson Road
Sylva, NC 28779
828.631.1111

**JUST
RENOVATED
2024!**

The Mountain Laurel Shop

Custom Handmade Rustic Furniture



Over 30 Local Artisans

556 W Main St, Sylva, NC * MountainLaurelGiftShop.Com



Instagram

Mountain_LaurelShop

THEATER

WCU John W. Bardo Fine & Performing Arts Center

Western Carolina University
828-227-3591

wcu.edu/bardo-arts-center

VISITOR INFORMATION

Jackson County Chamber & Visitor Center



NC Trout Capital! Stop by for a free fly-fishing map, dining guide, waterfall map.

773 W Main St.

Sylva, NC 28779

828-586-2155 • 800-962-1911

mountainlovers.com

Jackson County TDA

From epic hiking and the WNC Fly Fishing Trail, to unique breweries, it's your escape.
discoverjacksonnc.com

Town of Dillsboro

Rediscover the quaint mountain village of Dillsboro, NC! Eat, Shop, Stay, Play in Dillsboro.

42 Front St.

Dillsboro, NC 28725

828-586-1439

dillsboronc.info



Make more

OF YOUR MOUNTAIN ESCAPE

Plan your getaway at
DISCOVERJACKSONNC.COM

Open to Experience WAYNESVILLE, MAGGIE VALLEY & CANTON

31 MILES  FROM ASHEVILLE

26 MILES  TO CHEROKEE



37 MILES FROM FRANKLIN, NC

APPALACHIAN EXPERIENCE FILLED WITH OUTDOOR
ADVENTURE AND FAMILY ACTIVITIES!

3 VIBRANT COMMUNITIES:

- ★ **WAYNESVILLE** – Picturesque community that embodies the Culture and Heritage of Western NC.
- ★ **MAGGIE VALLEY** – Nestled in Nature's Glory!
- ★ **CANTON** – National Register of Historic Places.

HIDDEN GEMS AND POPULAR ATTRACTIONS:

- ★ **BLUE RIDGE PARKWAY** – Reaches its highest elevation in Haywood County, blueridgeparkway.org
- ★ **CATALOOCHEE SKI AREA** – Enjoy seasonal skiing and snow tubing in Maggie Valley. (828) 926-0285 • cataloochee.com
- ★ **CATALOOCHEE VALLEY** – Famous for its elk population and elk sightseeing tours. visitncsmokies.com
- ★ **GREAT SMOKY MOUNTAINS NATIONAL PARK** – Encompasses over one-half million acres. nps.gov/grsm
- ★ **LAKE LOGAN** – 260 acres of land situated in a pristine valley near the Blue Ridge Parkway.
- ★ **PIGEON RIVER** – Flows from North Carolina to east Tennessee.

VISITHAYWOOD.COM
HAYWOODCHAMBER.COM
MAGGIEVALLEY.ORG

AGRITOURISM

Boyd Mountain Christmas Tree Farm

Choose-n-Cut Fraser Fir, paved parking, restrooms, gift items in hospitality tent. Dogs on leash welcomed. Mid November thru first week in December. Located at Boyd Mountain Log Cabins 445 Boyd Farm Rd. Waynesville, NC 28785 828-926-1575 • 828-926-8888 boydmountain.com

**Buffalo Creek Vacations**

Come see our American bison. Interact with mini-donkeys, goats, mini-horses and llamas. Call for reservations. Clyde, NC 28721 828-550-0960 buffalocreekvacationsNC.com

**Haywood's Historic Farmer's Market**

Fresh local produce, seafood, baked goods, goat cheese, herbal products, meat, eggs, plants, flowers, preserves, honey and heritage crafts. Live music. Saturdays, 9am-12pm, April-December. Rain or shine. 250 Pigeon Street (in the parking lot of the Hart Theater). Waynesville, NC 28785 828-356-5498 waynesvillefarmersmarket.com

Waynesville Tailgate Market

Fruits, vegetables, black walnuts, organic food and other homemade products. Wednesday & Saturday, 8-noon; Mid-May to end of October.

171 Legion Drive at the American Legion in Waynesville behind Bogart's restaurant. 828-456-1830 visitsmokies.com/attractions/waynesville-tailgate-market/

BREWERY/WINERY

B&C Winery

Small boutique winery with a large variety of wine available. 2427 Soco Rd. Maggie Valley, NC 28751 828-550-3610 bcwinerync.com

CULTURAL/MUSEUM

Canton Area Historical Museum

Displays focusing on the cultural history of Canton and Haywood County. 36 Park St. Canton, NC 28716 828-646-3412 blueridgeheritage.com/destinations/canton-area-historical-museum



YOUR ADVENTURE AWAITS AT CATALOOCHEE RANCH

Join us for a spectacular meal, luxurious accommodations, authentic Ranch adventures, and to experience our genuine hospitality.



(828) 926-1401 | CATALOOCHEE RANCH.COM

CULTURAL/MUSEUM

Museum of North Carolina Handicrafts at the Shelton House

Featuring unique works from some of the state's most acclaimed artisans.

49 Shelton St.
Waynesville, NC 28786
828-452-1551
sheltonhouse.org

Wheels Through Time Museum

The museum is home to the world's premier collection of rare and vintage American motorcycles.

62 Vintage Ln.
Maggie Valley, NC 28751
828-926-6266
info@wheelsthroughtime.com
wheelsthroughtime.com

DINING

Cataloochee Ranch



Breakfast, lunch and dinner. Evening entrées vary; an experience meant to be shared.

119 Ranch Drive
Maggie Valley, NC 28751
Cataloocheeranch.com

Fat Buddies Ribs and BBQ of Waynesville

Family-style BBQ, baby back ribs, smoked pork, smoked beef, smoked chicken, hand-cut steaks.

193 Waynesville Plaza
Waynesville, NC 28786
828-456-6368
fatbuddiesribsandbbq.com

Jack the Dipper Ice Cream

Home of the Warm Waffle Cone.

76 Waynesville Plaza
Waynesville, NC 28786
828-246-9766
jackthedipper.com

LODGING

Andon-Reid Inn

Top 25 USA B&B, centrally located, seven elegant en-suite rooms, delicious complimentary breakfast, mountain views.

92 Daisy Ave.
Waynesville, NC 28786
828-452-3089 • 800-293-6190
andonreidinn.com



BOYD MOUNTAIN

Log Cabins & Christmas Tree Farm



Waynesville/Maggie Valley, NC

828.926.1575
BOYDMOUNTAIN.COM

Boyd Mountain Log Cabins

Nine historic log cabins on 150 acres with fishing, hiking and a Christmas tree farm.
445 Boyd Farm Rd.
Waynesville, NC 28785
828-926-1575
boydmountain.com



Best Western Smoky Mountain Inn

Gateway to the Smokies, breathtaking mountain views, closest hotel to the Blue Ridge Parkway.
130 Shiloh Trail
Hwy 74, Exit 98
Waynesville, NC 28786
828-456-4402
Bestwestern.com/waynesville




Buffalo Creek Vacations

Where the buffalo roam and we welcome guests to stay in cabins or a caboose. Call or check our website.

Clyde, NC 28721
828-550-0960
buffalocreekvacationsnc.com



A family of four is hiking on a dirt trail in a mountainous area. The father, wearing a blue cap and a backpack, is pointing towards the distance. The mother, wearing a plaid shirt, and two young children are following him. The trail is surrounded by dense green foliage and tall evergreen trees. In the background, misty mountain ranges are visible under a clear blue sky.

IT'S TIME TO CATCH YOUR BREATH BECAUSE SOON IT WILL BE TAKEN AWAY.

— **VISIT** —
HAYWOOD
WESTERN NC MOUNTAINS

Experience the unrivaled beauty of Haywood County through its charming mountain towns: Waynesville, Maggie Valley, Canton, Clyde and Lake Junaluska.

Create an **UNFILTERED** experience
at **VisitHaywood.com**

LODGING

Cataloochee Ranch

A destination vacation spot offering mountain top lodging, dining, horseback riding, hiking.
119 Ranch Drive
Maggie Valley, NC 28751
Cataloocheeranch.com



Country Cabins

Authentic log cabins in mountain setting. Fireplaces, hot tubs, rocking chairs, covered porches, open year-round. Pets welcome.
171 Bradley St.
Maggie Valley, NC 28751
828-926-0612 • 888-222-4611
countrycabinsmv.com



Oak Park Inn

Downtown with old-fashioned, friendly service, enjoy walk to shops, boutiques, restaurants, pubs, movie, library, churches. 37 bedroom inn on Main Street.
196 S Main St.
Waynesville, NC 28786
828-456-5328
oakparkinn-waynesville.com

Premier Vacation Rentals

Providing quality vacation homes in the Smoky Mountains of North Carolina and Eastern Tennessee.
2787 Soco Rd.
Maggie Valley, NC 28751
828-926-6025
melissa@PVRNC.com
premiermaggierentals.com

The Swag

Romantic, hiking, hideaway, Great Smoky Mountains, open April through December 10th. Reservations required. 5,000 foot elevation.
2300 Swag Rd.
Waynesville, NC 28785
828-926-0430 • 800-789-7672
Theswag.com

OUTDOOR ACTIVITY

Buffalo Creek Vacations

Visit our Bison Ranch with advanced reservations. See bison, llamas, donkeys, goats, and mini-horse rides available. Ask about feeding animals. Call or check our website.
Clyde, NC 28721
828-550-0960
Buffalocreekvacationsnc.com

Cataloochee Ranch

A destination vacation spot offering mountain top lodging, dining, horseback riding, hiking.
119 Ranch Drive
Maggie Valley, NC 28751
Cataloocheeranch.com



Scenic Tours and Rentals

Gather your friends and family for an incredible UTV, Elk adventure in the wilderness of The Great Smoky Mountains. Head up the mountain to explore 25+ miles of dirt and gravel trails that soar above a mile high.
2961 Soco Road
Maggie Valley, NC 28751
(828) 944-0208
Scentictoursandrentals.com

Soco Crafts & Tower

Come see the best view in the Smokies from our 9-story observation tower! Open April–November since 1947.
6638 Soco Rd.
Maggie Valley, NC 28751
828-926-2807
sococrafts@outlook.com

MOTORCYCLE

Smoky Mountain Steel Horses

Smoky Mountain Indian Motorcycle, Slingshot & Pre-owned Harley-Davidson Dealer. Sales, Service, & Apparel.
82 Locust Dr.
Waynesville, NC 28786
828-452-7276
smokymountainsteelhorses.com

Sunburst (Pisgah National Forest)

Open May 1- October
Camping, picnic,
restrooms, trailer space, water,
fee required.



Sunburst Falls

A beautiful roadside waterfall that flows under a 1930's era stone bridge. 37 miles from Asheville, south of Canton along NC Hwy. 215. Located 7.4 miles south of Lake Logan.

Hwy. 215

Canton, NC 28716

Cataloochee

Camping, fishing, historical structures, horse camp, self-guiding auto tour, wildlife-watching. 39 miles from Cherokee, 65 miles from Gatlinburg, and 21 miles from Waynesville.

nps.gov/grsm/planyourvisit/cataloochee.html

Mouse Creek Falls

Big Creek Trail follows an old railroad grade. At 1.4 miles the trail passes Midnight Hole Falls, a deep picturesque pool a 6' falls. At 2.1 miles a left leads to a bench where hikers can rest and view Mouse Creek falls. The falls are 45' in height.

nps.gov/grsm/planyourvisit/mouse-creek-falls.html

Mountains-to-Sea Trail

This trail is North Carolina's state hiking trail. Stretches 1175 miles from the Great Smoky Mountains to the Outer Banks, stopping at many of our state's most beautiful places along the way.

mountainstotheseatrail.org

SHOPPING

Barber Orchards Fruit Stand

Barber's grows 25+ varieties of apples. We also make our own apple cider and baked goods. Just 1 mile off the Blue Ridge Park Way.

2855 Old Balsam Rd

Waynesville, NC 28786

barberorchardsfruitstand.com

Cabbage Rose

Cabbage Rose is your destination store in Beautiful Maggie Valley. 10,000 sq feet of "Nothing You Need but Want" 3388 Soco Rd

Maggie Valley, NC 28751

(828) 926-3079

cabbagerose.com

Mast General Store



Mercantile packed with traditional fashions, comfortable footwear, hiking gear, hundreds of candies, & country gourmet foods. Pets welcome.

63 N Main St. Waynesville, NC
828-452-2101

mastgeneralstore.com



SHOPPING

Pinnacle Farms

Pinnacle Farms is a breath-taking cut flower farm. We offer you-pick flowers, custom arrangements, DIY flower buckets, and more! Open April–October.

2900 Old Balsam Road
Waynesville, NC 28786
pinnaclefarmsnc@gmail.com
pinnaclefarmsnc.com

Waynesville Soda Jerks

We make high quality & unique craft sodas made from the finest Southern Appalachian grown ingredients. Gift shop open Tuesday–Saturday from 9–5.
35 Bridges St. Waynesville, NC
828-278-8589
Waynesvillesodajerks.com

Maggie Mountaineer Crafts

Famous fudge, jams, jellies, honey, molasses, moccasins, native American, souvenirs, home decor, old/new quilts, antiques.
2394 Soco Road Maggie Valley
828-926-3129
Maggiemountaineercrafts.com

Soco Gap Market

Soco Gap Market is a convenience grocery store 1/4th mile West of the Blue Ridge Parkway serving visitors to the Maggie Valley area.
158 Green Mountain Rd
Maggie Valley, NC 28751
(858) 663-1926

DISPENSARY

Terps and Shine

Woman Owned. Cannabis Dispensary. Home of NC's first Consumption Lounge (since 2018). 21+, CBD, THCA, D8, KRATOM
1369 Soco Rd, Maggie Valley
828-284-7834
terpsandshine.com

SPA & WELLNESS

Sundarah Wellness

Advanced massage therapy, skin care, ayurveda and private yoga services offered in Maggie Valley and Waynesville. Visit us online or call to book!
461 Moody Farm Rd
Maggie Valley
274 S Main St. Waynesville
828-944-0288
sundarahwellness.com

VISITOR INFORMATION

Town of Maggie Valley

Maggie Valley Festival Grounds hosts diverse choice of festivals, shows & fairs such as Plott Fest.
3987 Soco Rd. Maggie Valley
828-926-0866

Haywood Chamber of Commerce

Leadership, advocacy, development, innovation, entrepreneurship magic, mountain living, vacationing, hospitality, adventure. Pristine waterfalls, panoramic vistas.
28 Walnut St.
Waynesville, NC 28786
828-456-3021
haywoodchamber.com



Haywood County Tourism Development Authority

We invite you to experience our local brews, shopping, galleries, horseback riding, hiking.
91 N Lakeshore Dr Suite 2
Lake Junaluska, NC 28745
828-944-0761
VisitHaywood.com

Maggie Valley Chamber of Commerce

A perfect spot to reflect, renew and rediscover what vacations used to be.
2781 Soco Rd. Maggie Valley
828-926-1686 • 800-624-4431
maggievalley.org

Oh, the Stories You'll Tell

Step inside; take your time. Get lost on Memory Lane lined with barrel after barrel of favorite candies, browse aisles filled with quality outdoor gear, and listen as creaking floors and casual conversation whisper tales to make your mountain stay memorable. Visit the Mast Store in Downtown Waynesville.



MAST GENERAL STORE[®]

SINCE 1883

63 N. Main St. • Downtown Waynesville • (828) 452-2101

MASTGENERALSTORE.COM •     

Nearby Neighbors



GEORGIA

DINING

Blue Hound Barbecue

BBQ crafted from locally sourced meats, produce and wood. Everything is made from scratch and with love!

6676 Highway 441

Dillard, NC 30537

Bluehoundbarbecue.com

FAMILY ATTRACTION

Hillside Orchard Farms, Inc.

Family, fried pies, fritters, Locally made jams, pickles, relish, ciders, Seasonal corn maze, hayrides, gem mine, barnyard, train, field trips.

18 Sorghum Mill Dr.

Lakemont, GA 30552

706-782-2776

hillsideorchard.com

CULTURAL/MUSEUM

The Hambidge Center

Offers creative workshops plus a variety of free public programming on its pristine 600-acre creative sanctuary in the north Georgia mountains. 105 Hambidge Rabun Gap, GA (706) 746-7324

www.hambidge.org

Foxfire

Foxfire Museum & Heritage Center

Discover the magic of our Appalachian Village with over 20 fascinating log structures, some over 200 years old. Bring the kids to play in our miniature cabins and try walking on stilts. Hike through history and see the real Appalachia! Follow us on social media for events and classes.

98 Foxfire Ln. Mountain City, GA
706-746-5828 • foxfire.org

VISITOR INFORMATION

Rabun County Chamber of Commerce & Welcome Center

706-782-4812

rabunchamber.com



Foxfire
Appalachian Village & Mercantile

98 Foxfire Lane, Mountain City, GA
Next to Black Rock Mountain State Park - 30 minutes south of Franklin

GOLF COURSE

Sky Valley Country Club

Championship Golf Course open to the public daily year-round with competitive golf rates. Off of Georgia Highway 246, 20 miles from Franklin, NC. 568 Sky Valley Way #1 Sky Valley, GA 30537 706-746-5302 skyvalleycountryclub.com

LODGING

Mountain Aire Cottages & Inn

Beautiful and affordable 1 or 2 bedroom cottages, or individual motel rooms. All interior strictly non-smoking. 10-minute walk to downtown Clayton. Sorry, no pets allowed. 18 Motel Dr. Clayton, GA 706-782-9568 mtnaire12@gmail.com mountainairecottages.com

Tiny Life Homes

Sugar Mill Creek at Lake Burton is a private, gated, resort-style community, with 52 park model tiny home sites over the 12 acre property. 4075 Georgia Road Franklin, NC 706.920.6309 sugarmillcreek.com



NORTH CAROLINA

GENERAL SERVICE

Beautiful Wedding Ceremony

Regional traveling officiant, professionally trained by the guidelines of NC since 1994. Rev Jacqueline Weilks M.S.S Regional, NC Smokies 828-508-1911 • ncminister.com

LODGING

Shoji Spa and Lodge

Accommodations, 26 massage therapists, private outdoor soaking tubs, sauna, minutes to Asheville. Unforgettable mountainside experience. 96 Avondale Heights Rd. Asheville, NC 28803 828-299-0999 Shojiretreats.com

OUTDOOR ACTIVITY

SELF-GUIDED TOUR

**Blue Ridge Music Trails**

Your guide to traditional music of the North Carolina mountains and foothills. Find concerts, jams, event listings and more at blueridgemusicnc.com

Blue Ridge Craft Trails

Travel the Blue Ridge Craft Trails in NC's mountains and foothills to visit artists in their studios, shop galleries with local artwork, and discover scenic beauty along the way blueridgecrafttrails.com

**Appalachian Mural Trail**

Tour outdoor historical murals, see outstanding artwork by local artists near the Blue Ridge Parkway. 828-293-2239 • muraltrail.com

RAFTING

Rolling Thunder River Company

Join the ONE MILLION, and counting, who have experienced the most unforgettable river trips possible. Three river choices, endless memories! 20 Hughes Street McCaysville, Georgia 30555 www.rollingthunderriverco.com (800) 408-7238

VISITOR INFORMATION

Blue Ridge National Heritage Area

Discover the natural and cultural treasures of the NC mountains and foothills. Get inspired and plan your trip at blueridgeheritage.com

**Blue Ridge Parkway Association**

Print and digital resources for your Parkway journey. Lodging, maps, attractions and more. 828-670-1924 blueridgeparkway.org



DIRECTORY

BRYSON CITY



AGRITOURISM (See Also Tours)

Darnell Farms	31
Swain County Farmer's Market	31

BLUEWAYS

The Nantahala River	31
---------------------	----

CULTURAL/MUSEUM

Appalachian Rivers Aquarium	31
Fly Fishing Museum of the Southern Appalachians	31
Smoky Mountain Train Museum	31
Swain County Heritage Museum	31

DINING

Big Wesser	31
Fryemont Inn	31
River's End Restaurant (NOC)	31
Pop-N-Jacks Popcorn	32

EVENT/WEDDING

McKinley Edwards Inn	32
----------------------	----

GEM MINES & SHOPS

Nantahala River Gem Mining	32
----------------------------	----

LODGING

Basecamp Smoky Mountains	34
Calhoun House Inn & Suites	36
Fryemont Inn	34
Great Smokys Cabin Rentals	36
Hemlock Inn	32
Lakeview at Fontana	34
Long View Resort	32
McKinley Edwards Inn	34
Nantahala Cabins, Inc.	36
NOC Bryson City Cabins & Bungalows	34
Sky Ridge Yurts	34
Sleep Inn	34
Stonewood Cabins	34
Two Rivers Lodge	36
Watershed Cabins	36

DIRECTORY

LODGING/CAMPGROUND

Brookside Campground & Rafting	32
Gorgeous Stays	32
Grumpy Bear Campground & Gem Mine	37

OUTDOOR ACTIVITY

Fly Fishing the Smokies	37
Great Smoky Mountains Railroad	37
NOC Outdoor Adventure	37
Rolling Thunder River Company	37
Wildwater Nantahala Gorge Adventure Center	37

OUTDOOR ACTIVITY/EXCURSION

Appalachian Adventure Rentals	39
Great Smoky Mountains Railroad	39

RAFTING/KAYAKING

Brookside Campground & Rafting	39
Carolina Outfitters Whitewater Rafting	39
Nantahala Outdoor Center	39
Rolling Thunder River Company	39
Wildwater Nantahala Gorge Adventure Center	39

ZIPLINING

Nantahala Outdoor Center	39
Wildwater Nantahala Gorge Adventure Center	40

REAL ESTATE

Good Life Real Estate	40
-----------------------	----

SHOPPING

Cheddar Box Country Store	40
NOC Outfitters Store	40
Pop-N-Jacks Gourmet Popcorn	40
Uncle Bunky's T-Shirt Shop	40
Wesser General Store	40

VISITOR INFORMATION

Swain County Chamber of Commerce	40
Swain County Visitor Center	40
Swain County Tourism Development Authority	40



BLUEWAYS

Oconaluftee River	43
-------------------	----

CASINO

Harrah Cherokee Casino and Resort	43
-----------------------------------	----

CULTURAL/MUSEUM

Mountain Farm Museum	43
Museum of the Cherokee Indian	43
Oconaluftee Indian Village Living Museum	43

DINING

Harrah's Cherokee Casino and Resort	43
Brio Italian Grille, Gordon Ramsay Food Market, Ruth's Chris Steak House, Guy Fieri's Kitchen + Bar, Wicked Weed Brewpub, E Sports Zone, Noodle Bar, Lobby Cafe, Earl of Sandwich, Starbucks, Soundbytes	
Selu Garden Cafe	43

FAMILY ATTRACTION

Mountainside Theatre	44
Oconaluftee Indian Village	44
Ultra Star Multi-Tainment Center (Cherokee)	44

FISHING/HIKING/GUIDES

EBCI Fisheries & Wildlife Management	44
Rivers Edge Outfitters	44

GOLF COURSES

Sequoyah National Golf	44
------------------------	----

LODGING

Cherokee Inn	44
Fairfield Inn and Suites	44

LODGING/CAMPGROUND

Fort Wilderness RV Park	44
Smokemont	46

OUTDOOR ACTIVITY/HORSEBACK RIDING

Smokemont Riding Stables	46
--------------------------	----

SHOPPING

Bearmeat's Indian Den	48
Native American Craft Shop	48
Qualla Arts and Crafts Mutual	48
Traditional Hands Native American Jewelry & Art Gallery	48

VISITOR INFORMATION

Cherokee Welcome Center	48
EBCI Fisheries & Wildlife Management	48

FONTANA DAM, ROBBINSVILLE, & LAKE SANTEETLAH



AGRITOURISM

Graham County Farmer's Market	51
-------------------------------	----

ARTS/CRAFTS

Stecoah Valley Cultural Arts	51
------------------------------	----

BLUEWAYS

The Cheoah River	51
Lake Santeetlah	51

CULTURAL/MUSEUM

Graham County Museum of Prehistoric Relics	52
Junaluska Memorial & Museum	52
TVA Fontana Dam Museum & Visitor's Center	52

DINING

Mountview Bistro	52
Quill's Canteen	52
Tapoco Tavern	52

LODGING

Deal's Gap Motorcycle Resort	53
Fontana Village Resort & Marina	53
Historic Tapoco Lodge	53
Rivers Edge Treehouse Resort	53
Snowbird Mountain Lodge	53

FISHING/HIKING/GUIDES

Fontana Marina Excursions & Boat Rentals	55
Fontana Village & Tapoco Lodge Trails	56
Fontana Lake	56

SHOPPING

Fontana General Store	56
Fontana Pitstop Gas Station and Shop	57

VISITOR INFORMATION

Fontana Dam & Visitor's Center	57
Graham County Travel & Tourism	57
Tail of the Dragon	57
Town of Lake Santeetlah TDA	57
Town of Robbinsville	57



AGRITOURISM (See Also Tours)

Franklin Tailgate Market	59
Skyvue Ranch Alpacas	59

AIRPORT

Macon County Airport	59
----------------------	----

ANTIQUES/THRIFT

Nestfeathers Antiques	59
Whistle Stop Depot	59

ARTS/CRAFTS

Uptown Gallery	60
----------------	----

BLUEWAYS

The Little Tennessee River	60
Nantahala Lake	60

BREWERY/WINERY

Lazy Hiker Brewing Company	60
Slanted Window Tasting Station	60
SenAmore Vineyard & Farms, LLC	60

CULTURAL/MUSEUM

Cowee School Arts & Heritage Center	60
Cowee Viewsite and Trails	60
Franklin Gem and Mineral Museum	61
Macon County Historical Museum	60
The Rickman Store	61
Scottish Tartans Heritage Museum	60
Taste of Scotland and Celtic Festival	61

DINING

Asian King Buffet Sushi & Chinese Cuisine	61
Fat Buddies Ribs & BBQ (Franklin)	62
Gazebo Creekside Cafe	62
Jack the Dipper (Franklin)	62
Lakes End Cafe & Grill	62
Las Margaritas	62
Lazy Hiker Brewing Company	62
Sakura Japanese Restaurant	62
Siam Thai Cuisine	62
Slanted Window Tasting Station	62
Smokestack Cafe	62
Sunset Restaurant	62

FAMILY ATTRACTION

Andy's Trout Farm	63
Little Tennessee River Greenway Frog Quarters	63
Tiny Life Homes	63

GEM MINES & SHOPS

Artisan's Mineral & Gemstone Gallery	63
Gold City Gem Mine	63
Mason's Ruby and Sapphire Mine	63
Primitive Outback Kayaking & Gem Mining	64
Rose Creek Mine	64
Ruby City	64
Sheffield Gem Mine	64

GENERAL SERVICES

Stewart Communications	64
------------------------	----

GENERAL SERVICES/WELLNESS

Rose Room Spa	64
Yoga Den	64

LODGING

A Captain's Cabin & Mermaid's Mountain Love Shack	64
Andy's Trout Farm	64
ATbnb	65
Big Bear Cabin Rentals	65
Colonial Inn Franklin	65
Franklin Terrace B&B	65
Horse Tales Farm Inc.	65
Quality Inn	65
Sapphire Inn	64
Stay Nantahala Cabin & Yurt Rentals	65
Stay Out Yonder	65

CAMPGROUNDS

Andy's Trout Farm	65
Cowee Campground	65
Cullasaja River RV Park	65
Franklin RV Park & Campground	66
Mi Mountain Campground	66
Old Corundum Millsite Campground	66
Pines RV Park and Cabins	66
Rose Creek Campground & Cabins	66
Whistle Stop Depot	66

OUTDOOR ACTIVITY

Cowee View Interpretive Site	65
Fish Tales Outfitters & Guide Service	66
Friends of the Greenway	66
Gibson Bottoms	67
Lakes End Boat Rentals & Marina	66
Land and Liquid Adventures	66
Primitive Outback Kayaking & Gem Mining	66
Queens Branch	67
Tessentee Bottomland Preserve	67

FRANKLIN & NANTAHALA



QUILTING

A Stitch In Time	68
------------------	----

REAL ESTATE

Gemstone Village	68
RE/MAX Elite Realty	68
Tiny Life Homes	68

SHOPPING

Appalachian Growers	68
Franklin Office Supply	68
Friends of the Macon County Public Library	68
Limberlost Pottery Studio and Gallery	68
Mossy Rock WNC	68
Ruby City Gems	68
Trail Mix	68
Yonder	68

VISITOR INFORMATION

Franklin Chamber of Commerce	69
Franklin/Nantahala Tourism Development Committee	69
Franklin Tourism Development Authority	69
Smoky Mountain Host Visitor Center	69

HAYESVILLE & BRASSTOWN



ARTS/CRAFTS

John C. Campbell Folk School	75
------------------------------	----

CULTURAL/MUSEUM

Clay County Historical Museum	75
Historic Hayesville	75

DINING

The Copper Door	75
-----------------	----

EVENT/WEDDING

Clay County Courthouse/Beal Center	75
------------------------------------	----

LODGING

Deerfield Inn	76
Hinton Rural Life Center	76
Magical Mountain Resorts, The Enchanted Forest	76

CAMPGROUNDS

Sundowner RV Village	76
----------------------	----

HAYESVILLE & BRASSTOWN

SHOPPING

The Crow Apothecary & Tea Shoppe	76
Lazy Llama	77
Papaw's Harvest	77

SPA & WELLNESS

Bauer Brand	77
-------------	----

THEATER

Peacock Performing Arts Center	77
--------------------------------	----

VISITOR INFORMATION

Clay County Chamber of Commerce	77
Clay County Communities Revitalization Association	77

HIGHLANDS, CASHIERS, GLENVILLE, SAPPHIRE & SCALY MOUNTAIN



BLUEWAYS

Lake Glenville	79
----------------	----

CULTURAL/MUSEUM

Highlands Museum & Historical Village	79
Cashiers Historical Society	79

DINING

Hotel Cashiers	79
The Vineyard at High Holly	79

GEM MINING

Jackson Hole Trading Post	79
---------------------------	----

LODGING

Fire Mountain Inn, Cabins & Treehouses	79
Hotel Cashiers	79
The Vineyard at High Holly	79

OUTDOOR ACTIVITY

Highlands Aerial Park	80
Highlands Outpost	80

THEATER

Mountain Theater Company	80
--------------------------	----

VISITOR INFORMATION

Cashiers Area Chamber of Commerce	80
Highlands Chamber of Commerce & Visitor Center	80



AGRITOURISM

The Murphy Farmer's Market	83
Visit NC Farms	83

ARTS/CRAFTS

Cherokee County Arts Council	83
John C. Campbell Folk School	83
Olive's Porch	83

BREWERY/WINERY/DISTILLERY

FernCrest Winery	83
Hoppy Trout Brewing Company	83

CASINO

Harrah's Cherokee Valley River Casino and Hotel	83
---	----

CULTURAL/MUSEUM

Andrews Art Museum	83
Cherokee County Arts Council	84
Cherokee County Historical Museum	83

DINING

Hanging Dog General Store & Cafe	84
Harrah's Cherokee Valley River Casino and Hotel	84
Nathan's Famous, Panda Express, Earl of Sandwich, Starbucks, Moe's Southwest Grill	
Hoppy Trout Brewing Company	84
Julie's Place	84
The Landing Cafe, Ultra Star Multi-Tainment Center	84

EVENT/WEDDING

Hawkesdene	84
McGuire's Millrace Farm	84

FAMILY ATTRACTION

Andrews Valley Rail Tours	84
Ultra Star Multi-Tainment Center (Murphy)	84
West Tubing Co.	84

LODGING

Quality Inn	84
-------------	----

LODGING/CAMPGROUNDS

The Holler	85
Mountain Riders River Front Camping	85
Persimmon Creek RV Park	85

REAL ESTATE

Carolina Mountain Homes	86
-------------------------	----

VISITOR INFORMATION

Andrews Chamber & Welcome Center	86
Cherokee County Chamber of Commerce & Welcome Center	86
Murphy Visitor Center and Andrews Rest Area	86
NC Rest Area	86



AGRITOURISM

Jackson County Farmer's Market	89
The Whee-Market-Cullowhee's Craft & Farmer's Market	89

ARTS/CRAFTS

Dogwood Crafters	89
------------------	----

BLUEWAYS

Tuckasegee River	89
------------------	----

CULTURAL/MUSEUM

American Museum of the House Cat	89
Mountain Heritage Center	89

DINING

Blue Ridge Bootleg	90
City Lights Cafe	90
Creekside Oyster House and Grill	90
Jack the Dipper Ice Cream (Sylva)	90
Innovation Station	90
Lulu's on Main	90

EVENT/WEDDING

Baxley's Chocolates	90
---------------------	----

FAMILY ATTRACTION

American Museum of the House Cat	90
----------------------------------	----

LODGING

Best Western Plus River Escape Inn & Suites	92
Clarion Pointe	92
Comfort Inn	92
Holiday Inn Express & Suites Sylva-Western Carolina Area	92
Outland Chalet & Suites	92

CAMPGROUNDS

Moonshine Creek Campground	92
----------------------------	----

OUTDOOR ACTIVITY

Appalachian Mural Trail	93
-------------------------	----

REAL ESTATE

Western Carolina Properties – Dillsboro	93
---	----

SHOPPING

Baxley's Chocolates	93
Lazy Bear Trading Company	93
The Mountain Laurel Shop	93

THEATER

WCU John W. Bardo Fine & Performing Arts Center	96
---	----



SYLVA, DILLSBORO, BALSAM & CULLOWHEE

VISITOR INFORMATION

Jackson County Chamber & Visitor Center	96
Jackson County TDA	96
Town of Dillsboro	96

WAYNESVILLE, MAGGIE VALLEY & CANTON



AGRITOURISM

Boyd Mountain Christmas Tree Farm	99
Buffalo Creek Vacations	99
Haywood's Historic Farmer's Market	99
Waynesville Tailgate Market	99

BREWERY/WINERY

B&C Winery	99
------------	----

CULTURAL/MUSEUM

Canton Area Historical Museum	99
Museum of NC Handicrafts at the Shelton House	100
Wheels Through Time Museum	100

DINING

Cataloochee Ranch	100
Fat Buddies Ribs & BBQ (Waynesville)	100
Jack the Dipper Ice Cream (Waynesville)	100

LODGING

Andon-Reid Inn	100
Best Western Smoky Mountain Inn	100
Boyd Mountain Log Cabins	100
Buffalo Creek Vacations	100
Cataloochee Ranch	102
Country Cabins	102
Oak Park Inn	102
Premier Vacation Rentals	102
The Swag	102

OUTDOOR ACTIVITY

Buffalo Creek Vacation	102
Cataloochee Ranch	102
Scenic Tours and Rentals	102
Smoky Mountain Steel Horses	102
Soco Crafts & Tower	102

SHOPPING

Barber Orchards Fruit Stand	103
Cabbage Rose	103

Maggie Mountaineer Crafts	104
Mast General Store	103
Pinnacle Farms	104
Soco Gap Market	104
Terps and Shine	104
Waynesville Soda Jerks	104

SPA & WELLNESS

Sundarah Wellness	104
-------------------	-----

VISITOR INFORMATION

Town of Maggie Valley	104
Haywood Chamber of Commerce	104
Haywood County TDA	104
Maggie Valley Chamber of Commerce	104

NEARBY NEIGHBORS



DINING

Blue Hound Barbecue	106
---------------------	-----

CULTURAL/MUSEUM

Foxfire Museum & Heritage Center	106
The Hambidge Center	106

FAMILY ATTRACTION

Hillside Orchard Farms, Inc.	104
------------------------------	-----

GOLF COURSE

Sky Valley Country Club	107
-------------------------	-----

LODGING

Mountain Aire Cottages & Inn	107
Tiny Life Homes	107
Shoji Spa & Lodge	107

OUTDOOR ACTIVITY/RAFTING

Rolling Thunder River Company	107
-------------------------------	-----

OUTDOOR ACTIVITY/SELF-GUIDED TOUR

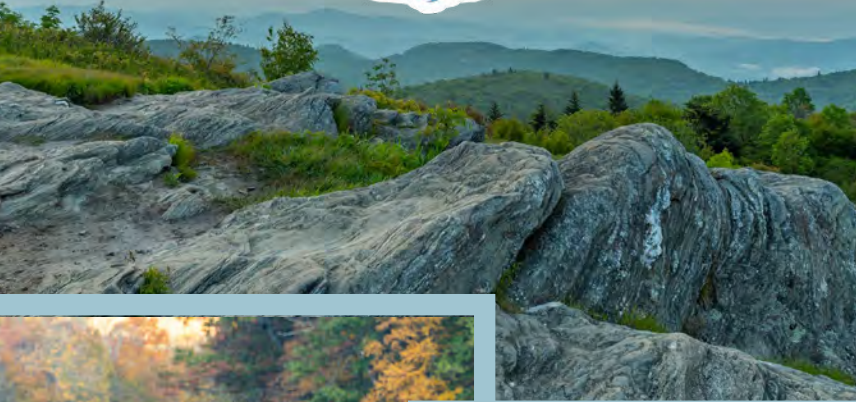
Appalachian Mural Trail	107
Blue Ridge Music Trails	107
Blue Ridge Craft Trails	107

GENERAL SERVICE

Beautiful Wedding Ceremony	107
----------------------------	-----

VISITOR INFORMATION

Blue Ridge National Heritage Area	107
Blue Ridge Parkway Association	107
Rabun County Chamber of Commerce & Welcome Center	106








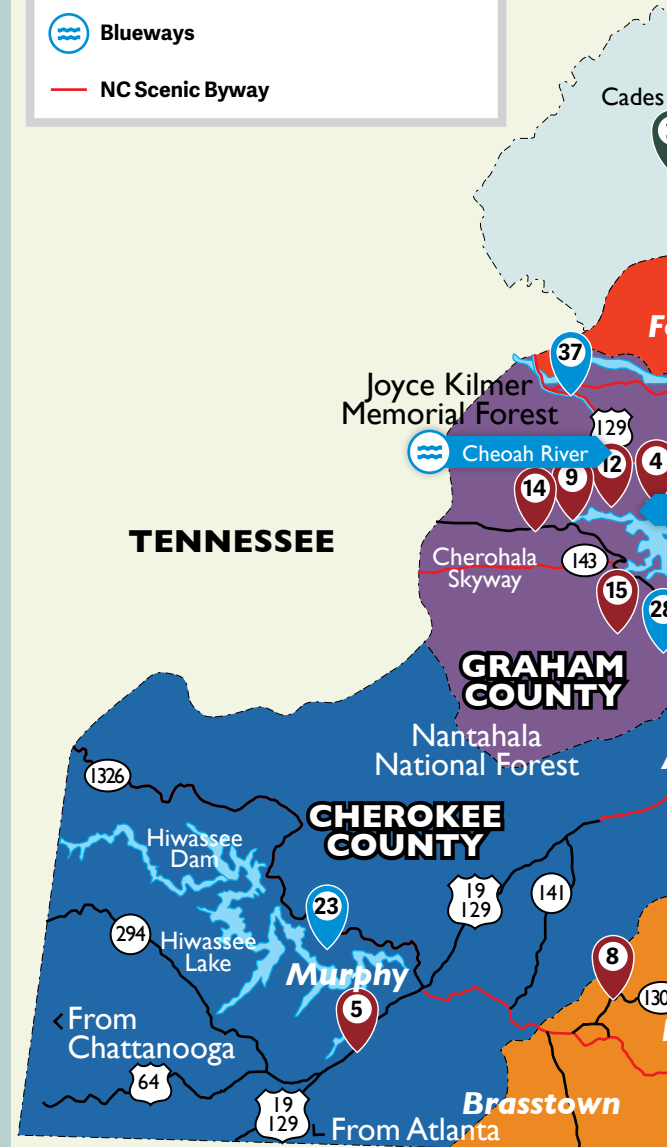
PLAN YOUR GREAT SMOKY MOUNTAINS OF NORTH CAROLINA ESCAPE

Brochures | Gifts & Souvenirs | Beautiful Grounds & Facility | NC
DOT | Friendly Staff | Tips on Staying, Playing, Dining |
Coffee & Snacks | Free Wi-Fi

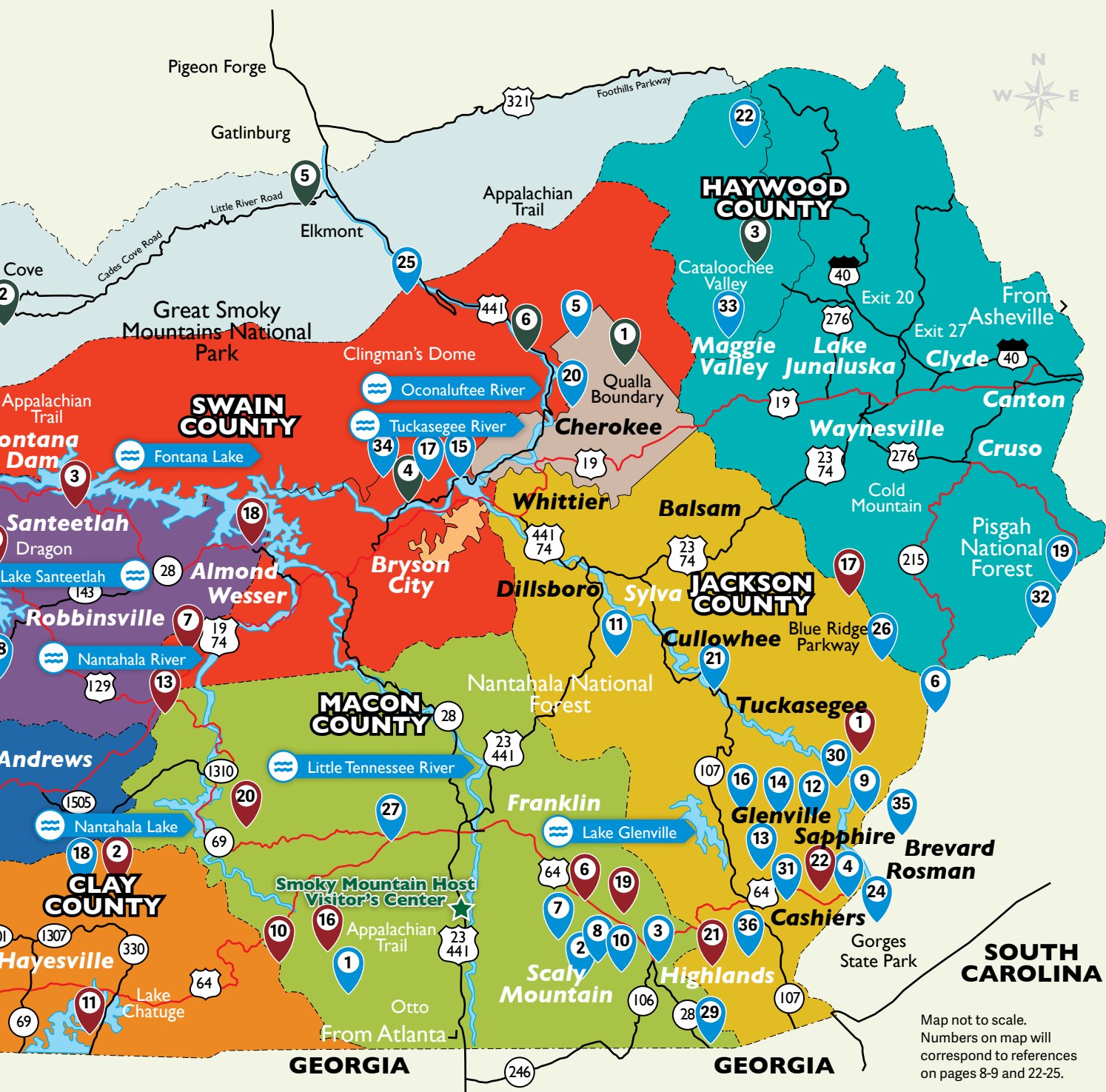
4437 Georgia Rd, Franklin, NC 28734
828.369.9606 | VisitSmokies.org

EXPLORE THE *Great*

-  Nantahala National Forest
Recreational Areas
-  Great Smoky Mountains National Park
Recreational Areas
-  Waterfalls
-  Blueways
-  NC Scenic Byway



Smoky Mountains of North Carolina



22

CHASING
WATERFALLS



30

BRYSON CITY
Swain County



42

CHEROKEE
Qualla Boundary



50

FONTANA DAM,
ROBBINSVILLE, AND
LAKE SANTEETLAH
Graham County



58

FRANKLIN AND
NANTAHALA
Macon County



74

HAYESVILLE AND
BRASSTOWN
Clay County



78

HIGHLANDS, CASHIERS,
GLENVILLE, SAPPHIRE
AND SCALY MOUNTAIN
Jackson County



82

MURPHY AND
ANDREWS
Cherokee County



88

SYLVA, DILLSBORO,
BALSAM AND
CULLOWHEE
Jackson County



98

WAYNESVILLE, MAGGIE
VALLEY AND CANTON
Haywood County



106

NEARBY
NEIGHBORS



Thunderstruck Ridge Overlook
By contest winner:
David McKenzie





4437 Georgia Road • Franklin, NC 28734

828-369-9606 • VisitSmokies.org