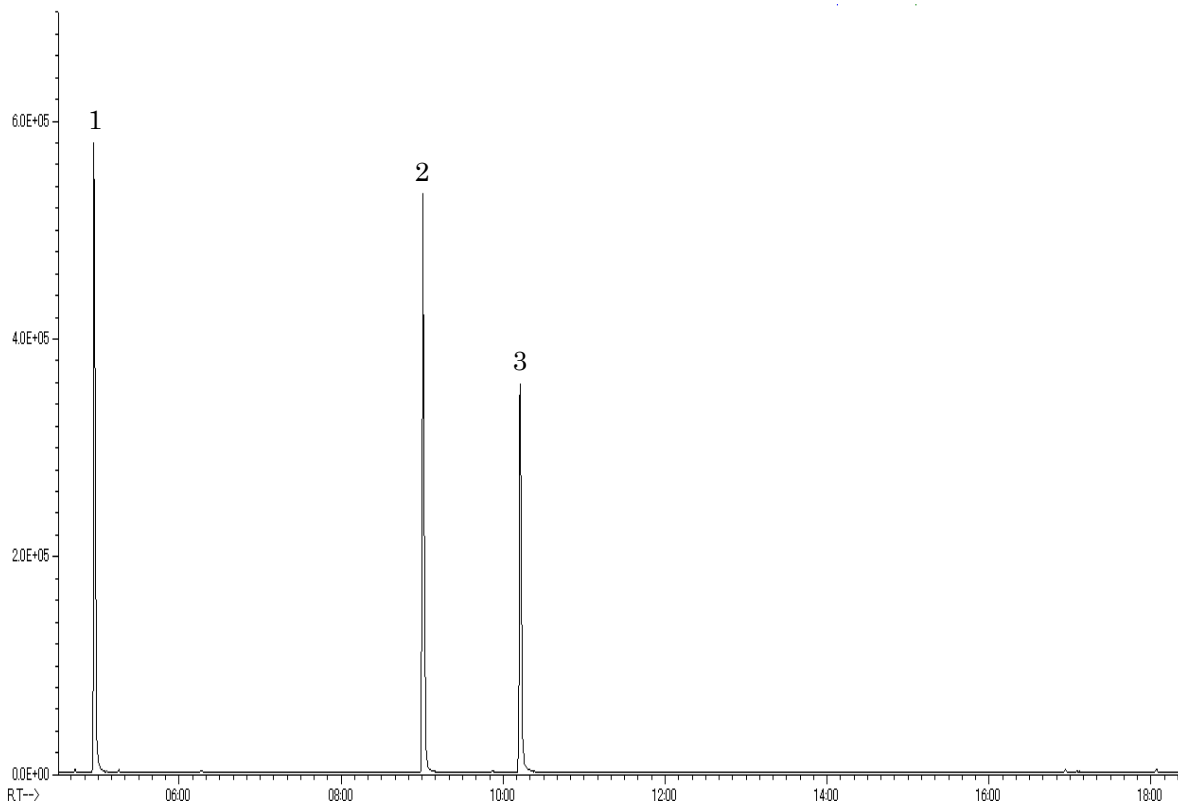


# InertSearch™ for GC

InertCap® Applications

## Tobacco

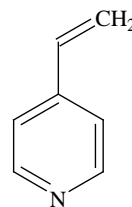
Data No. GA207-0904



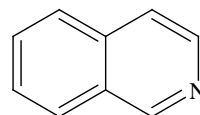
### Conditions

**System** : GC-MS  
**Column** : InertCap 5MS/NP  
0.25 mm I.D. x 30 m df = 0.25 µm  
**Col. Cat. No.** : 1010-18642  
**Col. Temp.** : 60 °C (1 min hold) - 10 °C/min  
- 280 °C (7 min hold)  
**Carrier Gas** : He 36.5 cm/sec  
**Injection** : Splitless 1 min Vent flow 50 mL/min  
250 °C  
**Detection** : MS Scan (m/z = 45 - 500)  
Interface Temp. 280 °C  
**Sample Size** : 10 µg/mL in IPA  
**Analyte** : 1. 4-Vinylpyridine  
2. Isoquinoline  
3. Nicotine

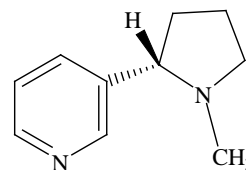
### Chemical Structure



1. 4-Vinylpyridine



2. Isoquinoline



3. Nicotine

Structures are created using Chemistry 4-D Draw which is provided by ChemInnovation Software, Inc.