



J&C.

A TRUNG DO'S GOLDSMITH CO

A seamless, full-service extension
to your in-house jewelry services.

JD&CO., A TRUNG DO'S GOLDSMITH CO

**A seamless, full-service extension
to your in-house jewelry services.**

Operating since 1991 and one of the jewelry industry's largest trade shops, we perform challenging jewelry and watch repairs, specialize in stone setting, offer complete custom jewelry design and manufacturing, and more.

Partner with us if you need

- A single source in the US for all your outsourcing needs
- Options for quick turn-times when outsourcing
- Real-time insights to each outsourced job
- A reliable resource for challenging jewelry repairs
- Master watchmakers who specialize in timepiece repairs
- Concept-to-completion custom jewelry design services
- Large-scale stone setting or manufacturing
- Access to bench jewelers when you're understaffed, or simply need help with overflow and seasonal jobs

A trusted resource

A trusted resource and esteemed partner among trade organizations, JD&Co. has a reputation for completing difficult jewelry and watch repair work others simply can't. Our rigorous intake & quality control process paired with real-time online management and transparency, plus competitive pricing and itemized estimates, has forged longstanding relationships within the jewelry industry.

Quality craftsmanship

We have over 50 skilled bench craftsmen, in addition to master jewelers and watchmakers. Highly efficient meets quality control in our trade shop with 95%+ perfection rates. Plus, our dedicated client satisfaction and customer service team is here for your day-to-day questions.

State-of-the-art

JD&Co. leverages state-of-the-art technologies, including Rhino/Matrix CAD CAM for designs, plus Solidscape and Tiger resign printers for 3D models. Plus, all JD&Co. customers have access to a complimentary, online 24/7 job tracking tool.

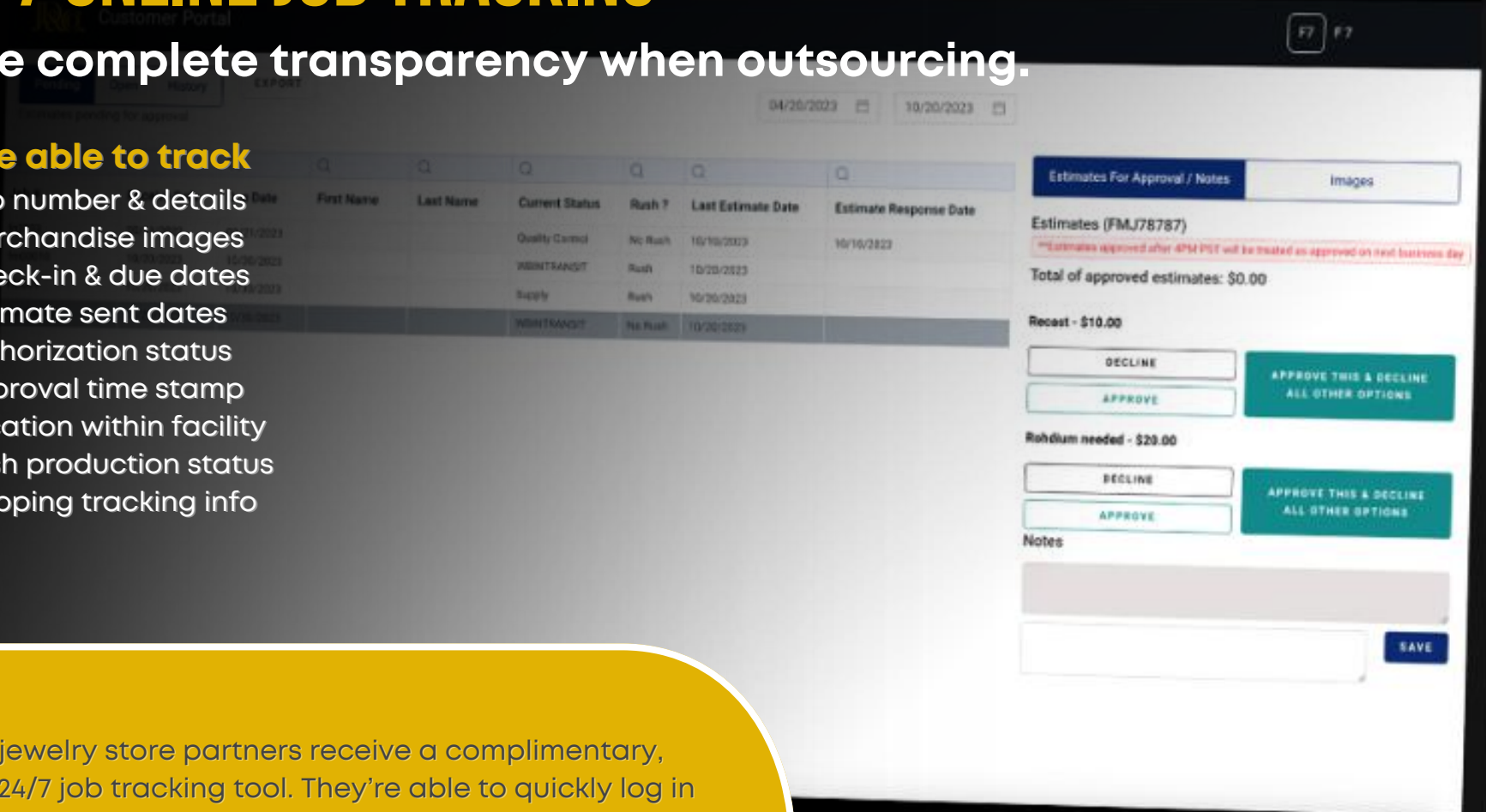
24/7 ONLINE JOB TRACKING

Have complete transparency when outsourcing.

You're able to track

- Job number & details
- Merchandise images
- Check-in & due dates
- Estimate sent dates
- Authorization status
- Approval time stamp
- Location within facility
- Rush production status
- Shipping tracking info

All our jewelry store partners receive a complimentary, online 24/7 job tracking tool. They're able to quickly log in to check the status of all their outsourced pieces and update their customers in real time. It keeps you connected to your customers' pieces as though they were in the back of your own shop.



OUR TRADE SHOP SERVICES

Core offerings

- Challenging jewelry repairs
- Watch and repair & restoration
- Custom jewelry design
- Manufacturing
- Stone setting & assembly
- Gem East semi-custom settings

Additional services

- Pearl & bead restringing
- Hand & laser engraving
- Diamond laser engraving
- Portrait transfers
- Gem identification
- Jewelry appraisals

JEWELRY REPAIRS

We service your challenging repairs and restoration needs.

One of the jewelry industry's largest trade shops, we have a reputation of completing repairs that other trade shops can't. There's no job too large or too small for our capabilities.

Common repairs include

- Invisible and tension-set mountings
- Micro-pave work
- Intricate baguette repair
- Soldering & retipping
- Remounting gemstones
- Refurbishing fine metals
- Resizing shared prong & pave rings
- Estate & antique restoration
- Tri-color rhodium plating



WATCH & CLOCK REPAIRS

We service all common, luxury, and custom timepieces.

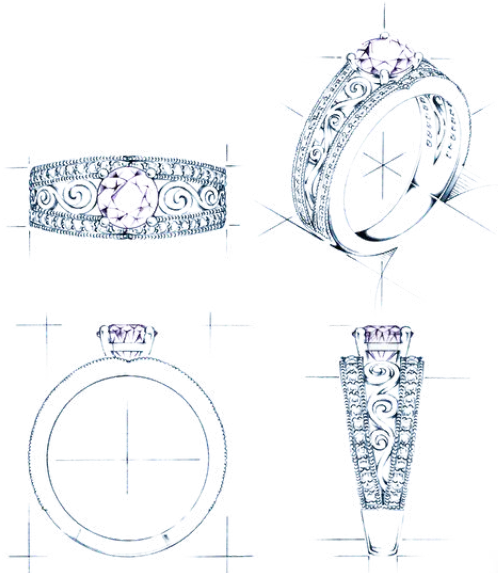
Our master watchmaker and bench team are experts at watch and clock repairs and restoration.

Timepiece services

- Crowns, stems, dials, & gasket repairs
- Chain & clasp repair & replacement
- Crystal replacement, pressure seal, & testing
- Movement pieces & time accuracy analyzer
- Battery replacement
- Refurbish heirlooms
- Basic cleaning to complete overhaul
- Customized, engraved, or iced-out watches

CUSTOM JEWELRY DESIGN

Don't allow your customers to settle for a style that's almost perfect.



We are your complete custom design team

- Consultative custom design
- 3D Matrix CAD CAM renderings
- 3D printed realistic prototypes
- Expert hand carvers on staff
- Platinum, gold, and silver casting
- Stone setting and assembly
- Finishing and polishing

More reasons to design with us

- Free estimates within 24 hours
- 3D renderings in 48 hours
- Two no-charge adjustments
- \$0 CAD fees if you cast with us
- 10-day production after approval
- Free 2-day shipping
- Competitive pricing

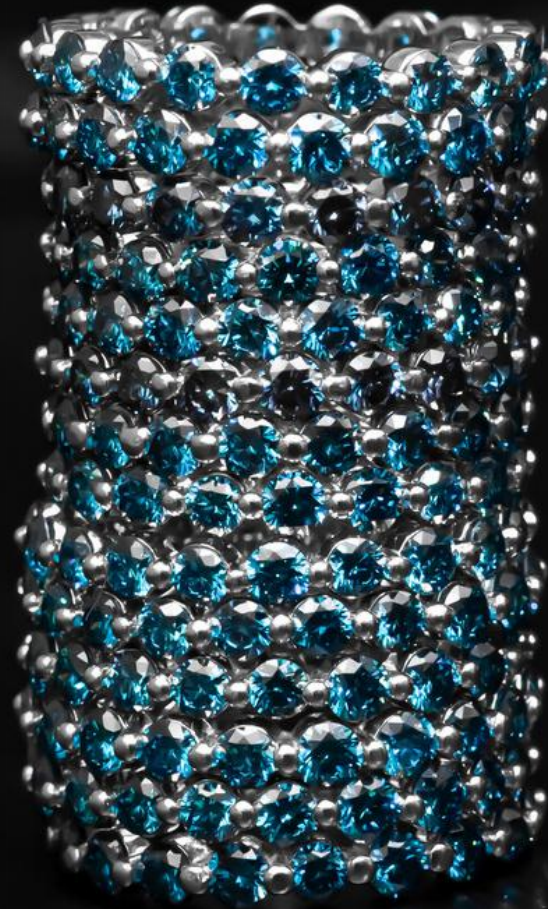
MANUFACTURING

From basic assembly to custom casting.

Need help with manufacturing? Dozens of master & expert jewelers are the ultimate solution for all your fabrication needs, assembly requirements, and custom designs. Plus, all our operations are proudly conducted in the USA.

Our manufacturing services include

- Private label design
- STL files & CAD CAM services
- Molds, models, & carving
- Casting, finishing, & polishing
- Stone setting & assembly
- Enameling & specialty finishes
- Laser engraved client logos





STONE SETTING & ASSEMBLY

Scalable services for single pieces or high volume needs.

Whether loose gemstones or customer-owned, our stone setting services are perfect for jewelry stores brands, designers, and manufacturers at any scale.

**Jewelers use JD&Co.
for Stone Setting
when they have**

1. A large volume of loose stones ready for sale as earrings, pendants, and rings.
2. Customers who want to place their own stones into purchased semi-mounts.
3. Manufactured semi-mounts that need stone setting (and sourcing, too!)

GEM EAST BY JD&CO.

Case-ready semi-custom settings.

Gem East is designed so your customers can select high-quality settings, choose their metal and color, and custom pick their gemstones.

Since 1957, Gem East has supplied discerning jewelers with the finest craftsmanship in classic and modern designs. Now operated by JD&Co., the Gem East brand empowers jewelers to offer their customers hundreds of high-quality, semi-customizable pieces without the purchase of inventory or requirement of minimum orders.

Reasons jewelers choose Gem East

1. Zero up-front inventory investment
2. Complimentary display with samples
3. No minimum sales requirements
4. Well-made, heavy-weight metal
5. Hundreds of pieces to offer customers
6. Customer choice of setting, metal, and stones
7. A trusted and established brand since 1957

[Learn more and download the catalog.](#)

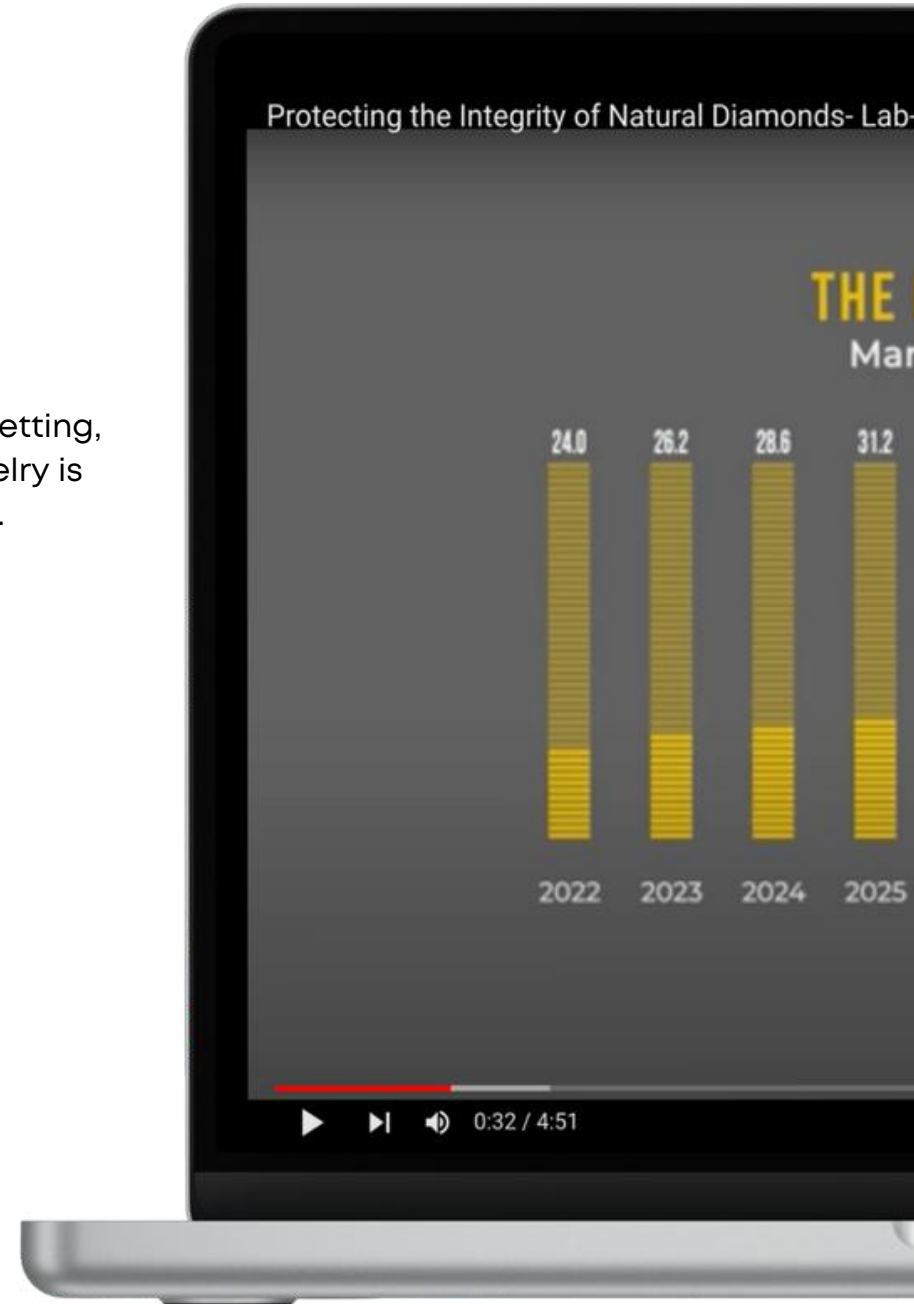


PROTECTING THE INTEGRITY OF NATURAL DIAMONDS

Lab-grown vs. mined diamonds within the JD&Co. facility.

JD&Co.'s commitment to excellence and integrity in the repair, setting, and manufacturing of both mined and lab-grown diamond jewelry is the foundation of our internal processes for handling diamonds.

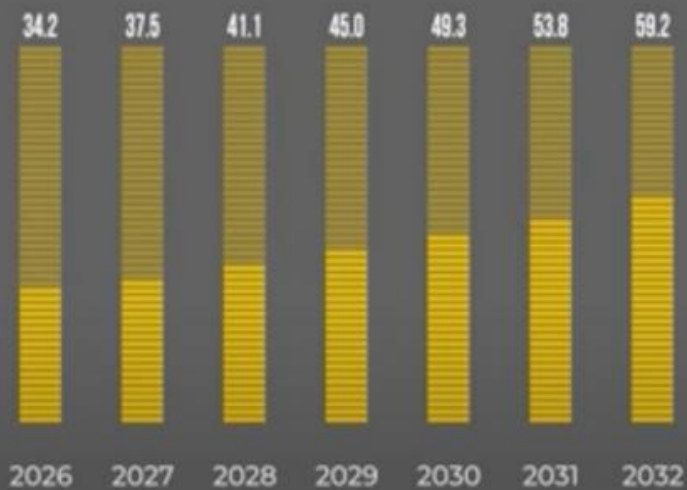
We've not experienced a single instance where lab-grown and natural diamonds were exchanged.



grown vs mined diamonds within the JD&Co. facility

LAB GROWN TREND

Market Value (in billions)



View our video to learn more about our separation procedures including

- Sorting at intake
- Minimum 2x testing
- Color-coded trays
- Facility signage
- Designated benches
- Standard-issue shirts
- Designated finishing
- Quality assurance
- Use of DiaTrue CS2

[View the video on YouTube.](#)





CAST A PARTNERSHIP WITH US!

Custom Design Form

Get a quote to produce a custom design, no matter how detailed or simple, before you decide to move forward with renderings.

[Go to the Custom Design Form.](#)



New Client Form

Ready to create an account with JD&Co.? Complete this form and we'll reach out with our Welcome Kit and next steps.

[Go to the New Client Form.](#)



Contact Us Form

Still have questions? Or perhaps an exploratory conversation about outsourcing? Contact us for more info.

[Go to our Contact Us Form.](#)



JD&CO.

A TRUNG DO'S GOLDSMITH CO

Peace of mind, close to home.

JD&Co. provides timely service, consistent quality, the ability to handle your overages when short-staffed, and around-the-clock tracking.

info@jdcojewelry.com
8639 Pacific Ave.
Tacoma, WA 98444
253-537-5572



Visit us online.