

MADISON COUNTY COMMUNITY FOUNDATION | WWW.MADISONCCF.ORG



Dear friends and community partners,

There is exciting momentum building across Madison County, and throughout this month's newsletter you will see a common thread woven into every story, initiative, and update: intentional progress guided by purpose.

This issue highlights the work happening across our strategic plan as we continue focusing on growing philanthropy, investing in meaningful impact, strengthening community connections, and building organizational capacity for the future. From progress within the Madison Forever campaign and Elevate Madison to new opportunities for generosity and collaboration, we are seeing our vision come to life in meaningful ways.

Behind every grant awarded, fund established, partnership formed, and story shared is a commitment to investing in lasting positive change to elevate and strengthen Madison County. Our board and staff remain energized by this work and deeply grateful for the donors, nonprofit leaders, volunteers, and community members who make it possible.

Thank you for being part of this shared journey. Together, we are building momentum today that will create lasting impact for generations to come.

Ben Davis, President



## IN THIS ISSUE

*Strategic Plan in Action:  
Building Momentum,  
Strengthening  
Madison County*

**Impact Story of the Month**

**Fund Spotlight**

**Madison Forever Campaign  
Update**

**Elevate Madison Momentum**

**Growing Philanthropy in  
Madison County**

**Community Connections and  
Collaboration**

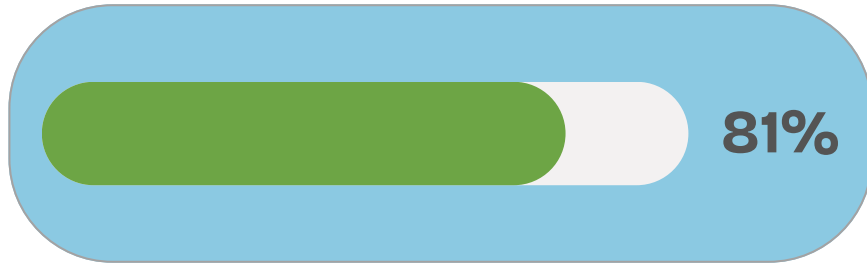
... and more!

INTEGRITY COMMUNITY IMPACT INCLUSION LEGACY

# May Campaign Spotlight

## Madison Forever in Motion

Through a generous gift from Lilly Endowment, Inc., we are growing unrestricted funds that provide flexibility to respond to community needs and opportunities now and for generations to come.



Fulfilled:  
\$684,463

**GOAL**  
**\$843,750**  
To receive  
**\$1,687,500**

Remaining:  
\$159,287



Just as bees gather and store honey to sustain the hive through every season, we grow our portfolio of endowed funds to ensure our community's strength through generations. Each gift becomes part of the honey we preserve.

Through Multiply Madison, we're building stores of generosity that guarantee equity and impact across time.

## Multiply Madison Brings our Strategic Plan to Life

### Grow our Portfolio of Funds

Every gift grows our community's long-term capacity for good. Through robust matching opportunities, we're building endowed funds that will provide resources to meet community needs, today and for generations to come.



### Invest through Grantmaking

Flexible funds create stronger impact. Multiply Madison expands our ability to invest in innovation, respond to emerging needs, and support projects that shape a stronger Madison County.



### Convene our Community

Connection creates change. This campaign brings together donors, nonprofits, and partners with a shared vision to elevate Madison County. Together, we are creating a community where ideas and generosity thrive.



**INVESTING IN LASTING POSITIVE CHANGE**

# Meet Our Summer Intern

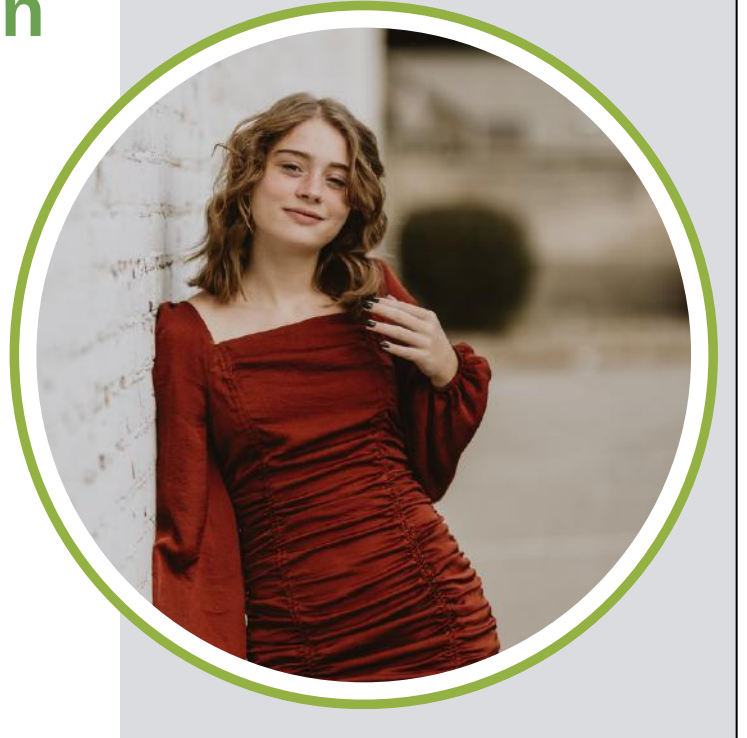
## Keira Shelton

Keira Shelton recently joined the Madison County Community Foundation as a Student Intern, where she supports community engagement, marketing and communications, event planning, and day-to-day administrative support to Foundation staff. She is pursuing degrees in Social work and Honors in Humanities at Indiana Wesleyan, along with a minor in Psychology and a certificate in Child Advocacy.

Through her academic background and experiences, Keira brings a strong understanding of the importance of philanthropy that is grounded in empathy, informed by human behavior, and committed to addressing systemic challenges while advancing equity.

In addition to her work with MCCF, Keira will step into a significant leadership role on campus next year as a Resident Assistant, reflecting her dedication to service, mentorship, and community engagement.

Student interns at the Foundation are funded through the Lilly Endowment, Inc. Intern Scholarship Fund. Keira is already making meaningful contributions to the MCCF team, including development of the Madison County Nonprofit Directory, and we look forward to the positive impact she will continue to make in the months ahead.



### Help Build the Madison County Nonprofit Directory

The Madison County Community Foundation is developing a new online nonprofit directory to help connect community members with organizations serving Madison County, while also helping nonprofit leaders discover and connect with one another. This resource is in the early stages of development, and we would love your help. To be included in the launch of the Nonprofit Directory, please fill out the information form.



[Nonprofit Directory Information Form](#)


Strategic Goal Connection:  
**STRENGTHEN** our organizational capacity

# Congratulations, Ben!

Madison County Community Foundation CEO and President, Ben Davis was recognized for his leadership marked with integrity at the Madison County Alliance Awards program when he received the 2026 Keith Pitcher Character in Business Award.

Check out the video to view the introduction and acceptance speech as well as words of congratulations from MCCF Board and Staff. This community is grateful to have Ben leading the philanthropic efforts in Madison County.

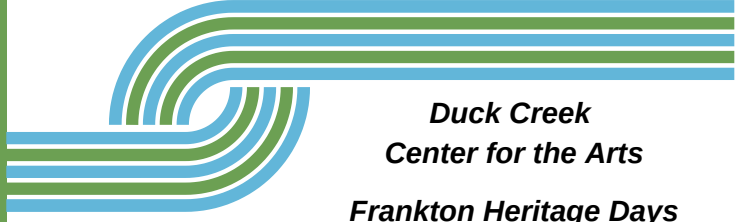


 [Video: Keith Pitcher Character in Business Award](#)

## Spring Impact GRANT RECIPIENTS



*Creating Lasting Change in Madison County*



- Duck Creek Center for the Arts*
- Frankton Heritage Days*
- Harmony House Mission*
- Hoosier Wildlife Rescue and Rehabilitation*
- Meridian Health Services*


**\$20,500 AWARDED**

# Congratulations SCHOLARSHIP RECIPIENTS 2026

More than **\$220,000**

awarded to students in Madison County



 [2026 Scholarship Recipients full list](#)

# Connections on Tap

**A CASUAL NONPROFIT MEETUP TO RECONNECT AND RECHARGE**

*hosted by Madison County Community Foundation*



**Tuesday, June 16  
3-5 pm**

*Enjoy relaxed conversation and complimentary appetizers and beverages, including plenty of NA options.*

 [RSVP](#)

Strategic Goal Connection: CONVENE our Community

MAY 2026

# IMPACT STORY

ESSENTIAL SENIOR  
HEALTH AND LIVING



## Your generosity helps seniors stay connected, engaged, and thriving.

For many older adults, one of the greatest challenges of aging is not physical. It is social isolation. Loneliness can quietly impact mental, emotional, and physical health, creating barriers to independence and well-being. Across Madison County, Essential Senior Health and Living is helping older adults build friendships, stay active, and remain engaged through meaningful opportunities that foster belonging, learning, and joy.

**Through an Impact Grant from Madison County Community Foundation, Essential Senior Health and Living expanded social, educational, and recreational programming for older adults across Madison County.**

Weekly bingo and craft programs, movie days, educational workshops, special events, and enrichment opportunities helped seniors strengthen community connections, improve wellness, and reduce social isolation. Approximately 4,000 seniors participated in programs in 2025 alone.

The impact reaches far beyond activities themselves. Educational initiatives like the Senior Speaking Series equip seniors with practical tools for healthy aging through topics such as nutrition, mobility, chronic disease management, scam awareness, and strategies for overcoming isolation. Partnerships with organizations like LifeStream Services, Purdue Extension, and Community Hospital strengthen this work and ensure seniors have access to resources that support long-term wellness and independence.

For many participants, connection is built through shared experiences and new adventures. Group outings create opportunities some seniors may never otherwise experience, from live theatre performances and riverboat cruises to cultural destinations and community events. Transportation barriers, financial limitations, and mobility concerns often prevent seniors from participating in experiences like these. Essential Senior Health and Living helps remove those barriers and open doors to discovery, friendship, and lifelong learning.



[Read More](#)

Strategic Goal Connection: INVEST through grantmaking

# Fund Spotlight

## Beghtel Family Fund

Sometimes generosity begins with greater understanding. For the Beghtel family, that understanding came through firsthand experience seeing the Madison County Community Foundation's work in action.



“Our family began to think about creating a family fund when I was invited to be a part of the grants review process,” shared Joy Beghtel. “Before that, I didn’t fully understand what the Foundation did. Once I saw exactly how family and individual funds were used for the greater good of the community, I knew we would love to establish a family fund that could add to that good work.”

Initially, Greg and Joy Beghtel considered creating a Field of Interest fund to support agencies connected to foster care, an area deeply meaningful to them after seven years of participating in foster care and welcoming children into their home. As they became more involved with grants committees and learned more about community philanthropy, however, their vision evolved.

Recognizing the flexibility and lasting impact of unrestricted giving, the Beghtels chose to create an unrestricted family fund, trusting future leaders and grant committees to thoughtfully respond to Madison County’s greatest needs.

The Beghtel Family Fund was established to cultivate a sense of purpose, connection, and well being within Madison County. Through the creation of the fund, the family hopes to support and improve the lives of their cherished neighbors for generations to come.

“As a member of several grants committees, my eyes have been more fully opened to the depth of need in our county,” Joy shared. “We are thrilled that our family fund can be added together with all the other funds to help meet the most pressing needs in our community.”

Over the past 14 years, Madison County has become home in every sense of the word. Through farm life, relationships, and community connections, the Beghtel family has developed a deep love for this place and the people who call it home. “We see the hearts of people living here and want to continue to be a part of the good work going on in Madison County.”

Through the Beghtel Family Fund, that commitment will continue creating impact and strengthening Madison County for generations to come.

## Fund Stories Now Featured on Our Website

Discover the people, passions, and purpose behind the funds making a difference across Madison County.



[Explore Fund Stories](#)

Strategic Goal Connection: GROW our portfolio of funds

# NEW

# May 2026

Thank You  
for your  
generosity

## NEW FUNDS THIS MONTH

### The Outfitters Agency Endowment Fund

The Outfitters, Inc. Agency Endowment Fund creates a lasting legacy of support for children in Madison County by helping provide clothing that fits, builds confidence, and encourages a positive self-image. Through community partnership and compassion, this fund helps ensure local students have access to essential clothing and the opportunity to thrive for generations to come.



### The Madison Grant Alumni Association Endowment Fund

This fund provides long-term support for the mission of the Madison-Grant Alumni Association, strengthening connections among alumni while supporting students, educators, and school programs. The fund also helps preserve the history and legacy of Madison-Grant Schools and enhances academic, athletic, cultural, and extracurricular opportunities. As an endowment, this fund creates a lasting resource to benefit Madison-Grant Schools and future generations for years to come.



# \$48,435

**\$25,000**

The Outfitters Agency Endowment Fund

**\$10,000**

Elwood Education Foundation

**\$2600**

Davis-Kohlmorgen Family Fund for Madison County

**\$2000**

Don and Diana Garner Scholarship

**\$1650**

Edgewood Pool Fund

**\$1350**

Women's Endowment Fund

**\$1160**

Combat Ministries Endowment Agency Fund

**\$1000**

America 250 Fund

**\$1000**

The Madison-Grant Alumni Association Endowment Fund

**\$966**

Walter and Carolyn Davis Family Fund

**\$960**

Tommie Griffin Memorial Scholarship

**\$435**

Various unrestricted and field of interest funds

**\$314**

Various designated funds

You can set up a payment plan to contribute an amount of your choice to any of the funds held at the Foundation or to start a named fund of your own.

Contact  
spatton@madisonccf.org  
for more information



MCCF Funds

# Values in Action

## Integrity

Recognition and strong stewardship reflect our commitment to accountability, transparency, and excellence.

## Community

Through partnerships and connection, we continue bringing people together to strengthen Madison County.

## Impact

Strategic grantmaking creates meaningful and lasting change across our community.

## Inclusion

A growing diversity of funds expands opportunities for more people to support what matters most.

## Legacy

New endowment funds create lasting impact that will benefit Madison County for generations.

## Explore Website Updates

We've been making important updates to improve ease of use, strengthen functionality, and create a better experience for our community. Be sure to explore our refreshed navigation menu and new enhancements designed to help you find information and resources more easily.



[www.madisonccf.org](http://www.madisonccf.org)

