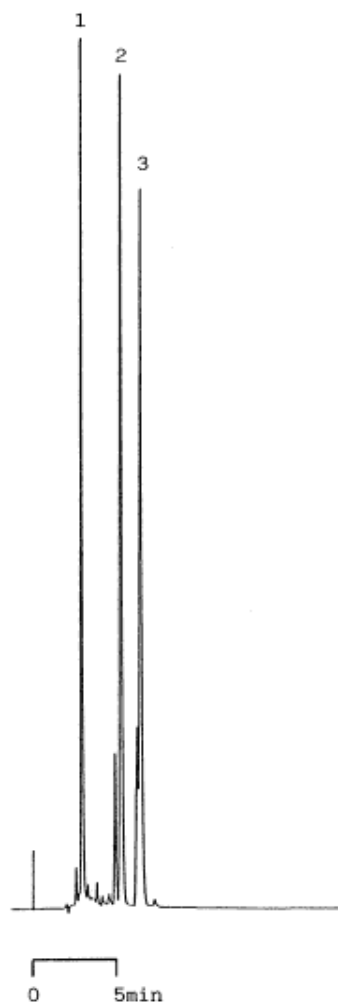


InertSearch™ for LC

Inertsil® Applications

Estrogens

Data No. LA221-0000



Column : Inertsil ODS

5µm

250 × 4.6 mmI.D.

Column Cat. No. : 5020-02202

Eluent : CH₃CN/1% CH₂ClCOOH(pH3 by NH₄OH)=60/40

Flow rate : 1.0 mL/min.

Col. Temp. : 40°C

Detection : UV 254 nm

Injection Vol. :

Sample :

Solutes : 1. Estriol 4mg/mL
2. Estradiol 4mg/mL
3. Estrone 2mg/mL