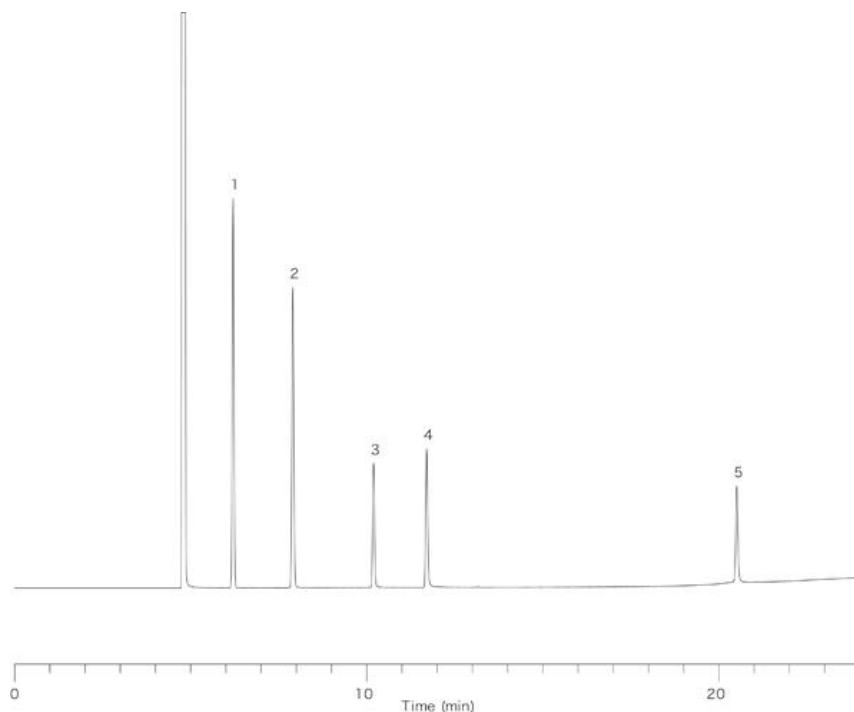


InertSearch™ for GC

InertCap® Applications

Amines

Data No. GA067-0000



System : GC/FID
Column : InertCap for Amines
0.32mmI.D. × 60m
Column Temp. : 100°C (5min) → 10°C/min → 250°C (30min)
Carrier Gas : He 150kPa
Injection : Split 1 : 50
Detection : FID
Sample : Amines

Solutes : 1. iso-propanol
2. Diethylamine
3. Ethylene glycol
4. Monomethylethanolamine
5. Di-ethylethanolamine