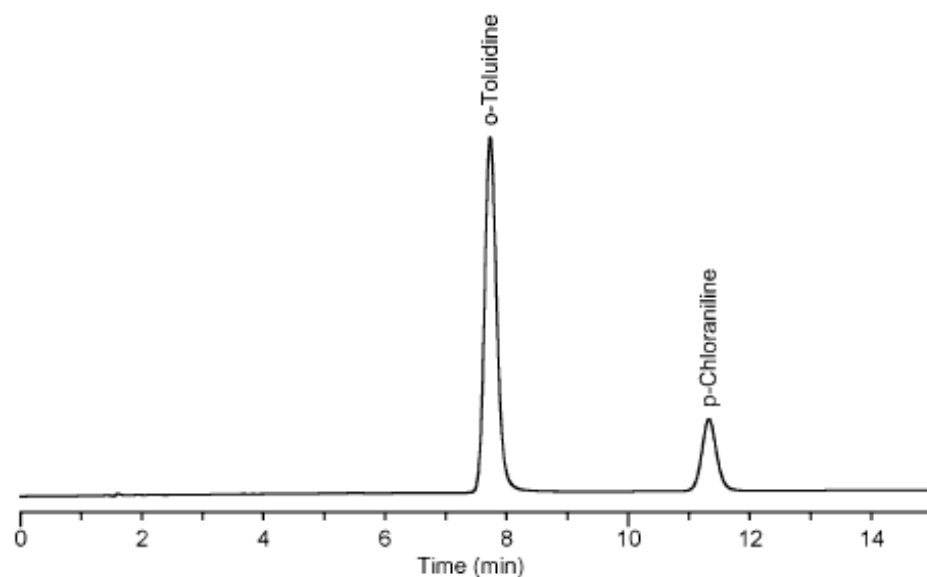


## Analysis of Toluidine

Data No. LA356-0000



<u>Peak Name</u>	<u>R.Time</u>	<u>Area</u>
o-Toluidine	7.730	2.67843e+06
p-Chloraniline	11.327	658442

Column : Inertsil ODS-3  
150 × 4.6 mmI.D.

Solutes : 1. o-Toluidine (10mg/L)  
2. p-Chloraniline (10mg/L)

Column Cat. No. :

Eluent : CH<sub>3</sub>OH/20 mM (NH<sub>4</sub>)H<sub>2</sub>PO<sub>4</sub>(pH 6.9; Na<sub>2</sub>HPO<sub>4</sub>)

Flow rate : 1.0 mL/min.

Col. Temp. : 40°C

Detection : ECD 700mV vs. Ag/AgCl

Injection Vol. : 1μL

Sample : Toluidine