

Down the Road



2023 Fall/Winter NEWSLETTER



Pictured: R Avenue, Texas Township

A Word from our Managing Director



**Joanna I. Johnson,
Managing Director**

Dear Members of the Kalamazoo County Community,

As we embrace the crisp air and changing leaves of fall, I wanted to take a moment to express our gratitude for your continued support and trust in the Road Commission of Kalamazoo County (RCKC).

This past year has brought forth unique challenges, and our dedicated team has been working tirelessly to ensure the safety and functionality of our local roads during the fall and winter seasons. From projects to snow-covered roads, our team is committed to maintaining our roads at the highest standards.

I want to extend my heartfelt appreciation to every member of our team and our Board for their unwavering dedication and hard work. It's their commitment that keeps our roads safe and accessible, no matter the weather.

Our commitment to serving you remains unwavering, and we look forward to another change of season with resilience. Please do not hesitate to reach out to us with any questions, concerns, or feedback. We are here in service leadership.

Wishing you a safe and pleasant fall and winter season.

Sincerely,
*Joanna Johnson Managing
Director Road Commission of
Kalamazoo County*

Board of County Road Commissioners

The Board's regular public meetings, are held at 3:00 p.m. on alternate Tuesdays at the Road Commission office, 3801 East Kilgore Road, Kalamazoo, Michigan. A meeting schedule and meeting Zoom link can be found on the Meetings tab of the RCKC website at www.kalamazooountyroads.com/meetings.php.

RCKC Offices Will Be Closed:

November 23rd

November 24th

December 22nd

December 25th

January 1st

CONSTRUCTION CONTINUES ON OUR NEW HOME!

We are so close! We expect to be moved in by Spring of 2024!
Stay tuned on our Open House! Check out our progress as of
late September 2023:

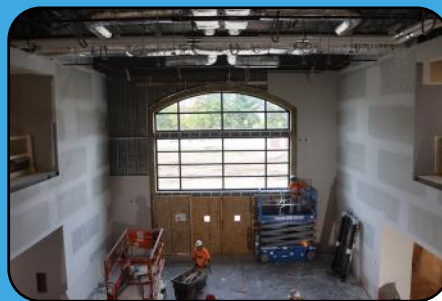
KEY GOALS OF THE FACILITY:

***SAFETY**

***UNITY**

***STEWARDSHIP**

***INNOVATION**



SEEKING YOUR ROAD TO SUCCESS? **WE'RE HIRING!**



Join an award winning team in public service

We're seeking qualified candidates for a variety of positions at the RCKC!

Why choose a career in public service? Public service careers offer long term security and stability, as well as countless opportunities for growth and advancement. You will be able to see your efforts make a REAL difference in your community, as you become a part of a team dedicated to making the roadways safe, innovation, and improving infrastructure for generations.

View current open positions at www.kalamazocountyroads.com/jobopenings

Keep an eye out for a notice for Open Onsite Interviews!



WINTER IS COMING

Yes, we have salt! As always, the RCKC is well prepared. Safe driving conditions are always a priority for the RCKC. In total, we are responsible for 1,270 miles of county roads. By monitoring weather forecasts frequently, we are able to meet winter's challenges and implement an effective winter maintenance plan. Check out our winter maintenance brochure for more information on our winter maintenance strategies. <https://www.kalamazocountyroads.com/upload/resources/94/Winter%20Maintenance.pdf>



Keep in Touch With Us!

269-381-3171

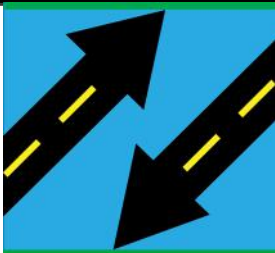
3801 E Kilgore Road
Kalamazoo, MI 49001

www.kalamazooountyroads.com

Regular Business Hours:
7:30am - 4:00pm

Sign up for RCKC CONNECT!

CONNECT TO ROAD COMMISSION
OF KALAMAZOO COUNTY ALERTS



RCKC CONNECT

HAVE YOU SIGNED UP?

Receive Message Alerts for:

- ◆ Road Construction
- ◆ Road Closures/Detours
- ◆ General Public News



To Sign Up Visit: www.kalamazooountyroads.com

RCKC CONNECT is a mass notification service that allows RCKC to send citizens voice and/or text messages to home phones, businesses, local agencies and mobile phones in just minutes regarding road closures, detours, and road construction projects. Citizens can choose to receive notifications about RCKC events that may affect their home, workplace, schools and more. RCKC CONNECT is also a great way for the RCKC to remind citizens of upcoming public meetings and RCKC General News.



Parkview Avenue at 12th Street and 11th Street roundabouts are officially Kalamazoo County's second and third roundabouts! This project was unique in that roundabouts were constructed at two consecutive intersections that are less than 1100 feet apart. The pair of roundabouts were installed in lieu of traffic signals to ensure a smooth flow of traffic, reduce congestion, traffic calming, and reduce the high number of traffic incidents regularly occurring at those intersections.

Members of the community and others who travel on Parkview Avenue will benefit greatly from the new roundabouts as they experience improved safety, reduced delays, and less congestion. RCKC had previously received service requests about speeding and concerns about safety in the area. These intersections have had several incapacitating and non-incapacitating injuries due to angle type, and head-on crashes that this project addressed. The new dual roundabouts will increase safety for all road users due to slower travel speeds and a decreased likelihood of fatalities or serious injuries in the event of a crash.



2023
Project Highlight:
Parkview Avenue
at 12th Street and
11th Street
Roundabouts

While the intersections were closed for the duration of the project, the construction was completed on time. Posted detours helped to maintain access to business districts. Sanitary sewers near the intersection of Parkview Avenue and 11th Street were constructed at the same time as the roundabouts, to provide improved drainage and mitigate the environmental impacts of water quality problems. The construction of the non-motorized pathway will offer societal benefits and provide an attractive place to walk, run, or bike. Project objectives were achieved, and the roundabouts were completed on schedule in an efficient and cost-effective manner.

We thank the affected residents, nearby businesses, and all those whose commute was also detoured. We appreciate the hardworking teams that assisted the RCKC in delivering this infrastructure investment including Milbocker & Sons. Inc., Hubbell, Roth, & Clark, and Oshtemo Township.



CONSTRUCTION SEASON 2023: IT'S NEARLY A WRAP!

Some of the construction and maintenance projects for 2023 included:



RUBBER MODIFIED CHIP SEAL TRIAL 2023

This program involved recycling and repurposing rubber scrap tires into Hot Applied Rubberized Chip Seal

- This trial was approved by RCKC Board on May 24, 2022; contracts were approved with five (5) Townships
- RCKC was awarded \$286,353 from Environment, Great Lakes & Energy (EGLE) Grant with a 50% local match required
- 10 local road miles chosen; most rated in poor condition – Pavement Surface Evaluation & Rating (PASER) 3 or less
- Projects located in the Townships of Brady, Climax, Pavilion, Schoolcraft and Wakeshma



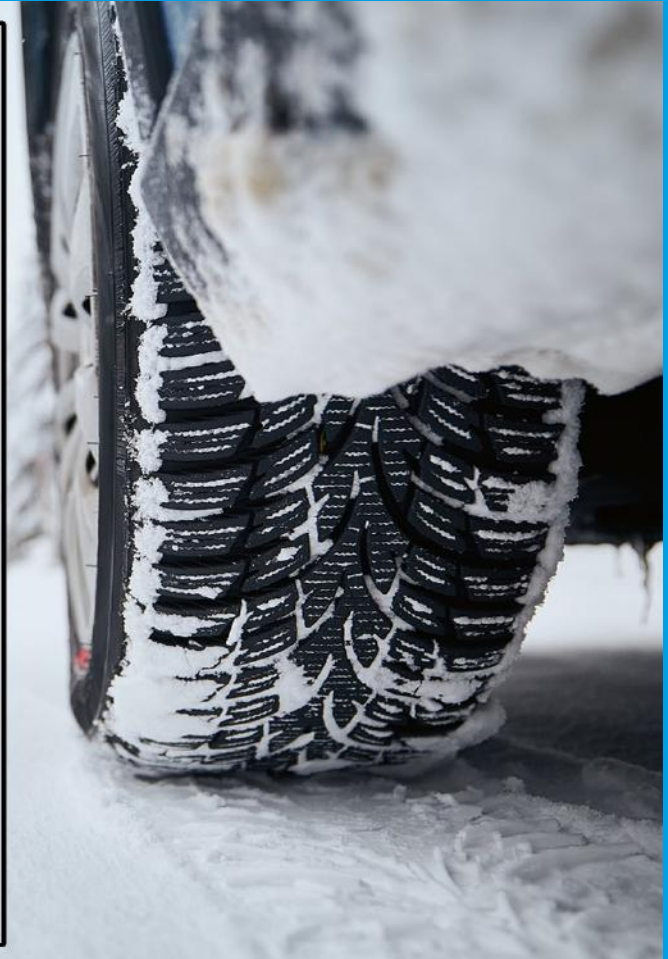
2023 Rubber Modified Chip Seal Project Map

Benefits of Rubber Modified Chip Seal

- Sustainable - Uses end-of-life tires, helping to reduce tire waste in landfills.
- Reduces carbon footprint - Recycles existing materials rather than mining new materials.
- Flexible - Cracking in winter may reseal in summer.
- Durable - Resistant to snow plow damage and water penetration, and can increase life of the road.
- Cost Effective - prolongs road life for long term savings.
- Versatile - Allows for preventive maintenance on roads in poor condition (previously reserved for fair and above)

ARE YOU READY FOR WINTER?

- ◆ Make sure your vehicle is winter ready:
 - ◆ Check your wiper blades
 - ◆ Check your tire inflation/ switch to snow tires
 - ◆ Check your battery
- ◆ Keep an emergency kit ready in your vehicle. Some great items include:
 - ◆ A blanket or warm clothes
 - ◆ A flashlight
 - ◆ Jumper cables
 - ◆ Shovel
 - ◆ Bag of sand or cat litter
- ◆ Avoid traveling close to plows or in their blind spots. Plows can suddenly move sideways from hitting drifts or cutting through packed snow
- ◆ Stay further away from the cars in front of you while driving
- ◆ **Drive slower** and give yourself more time to get where you need to go



SHAKE YOUR MAILBOX

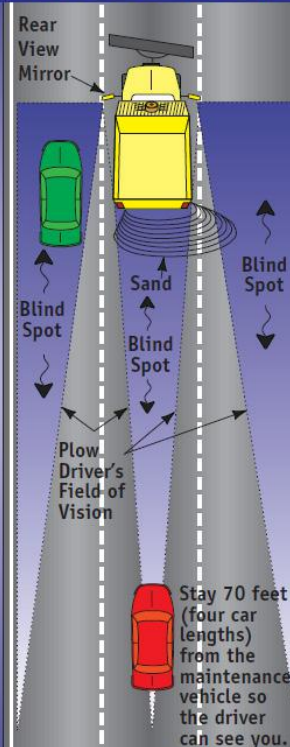


A good shake could save your mailbox! Each winter, mailboxes across the county can be damaged during winter maintenance operations due to the weight of the snow coming off the plow blade.



When You See A Snow Plow

Don't assume plow drivers see you. Their field of vision is limited.



Never pass on the right. Plows are pushing snow and spreading sand to the right.

Stay 70 feet (four car lengths) from the maintenance vehicle so the driver can see you.