

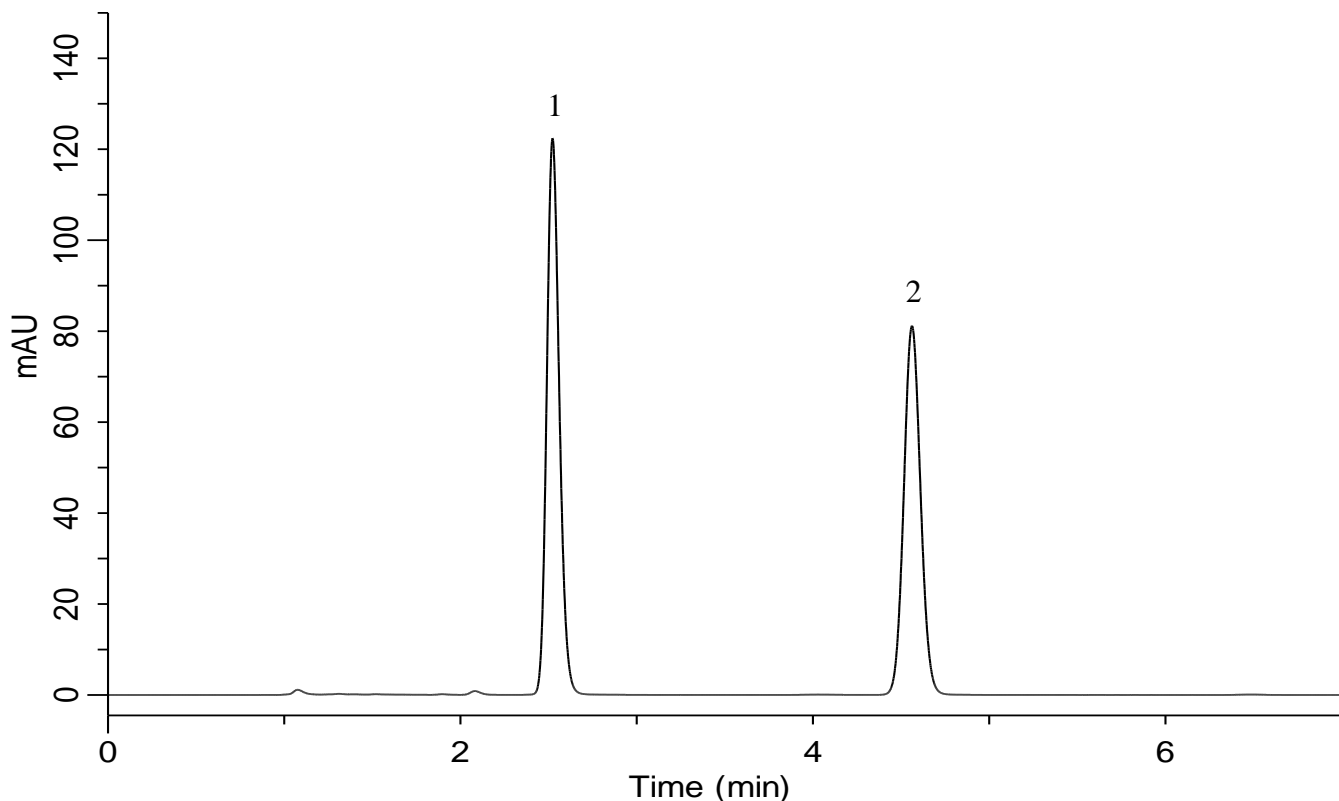
# InertSearch for LC

Inertsil Applications

## Analysis of Tamsulosin hydrochloride

(Under the Condition of the Japanese Pharmacopoeia)

Data No. LB659-0591



### Conditions

**System** : GL7700 HPLC system  
**Column** : Inertsil ODS-HL (5  $\mu$  m, 150 x 4.0 mm I.D.)  
**Column Cat. No.** : 5020-87123  
**Eluent** : A) CH<sub>3</sub>CN  
          : B) Solution\*  
          : A/B=50/50, v/v  
**Flow rate** : 0.84 mL/min  
**Col. Temp.** : 40 °C  
**Detection** : UV 225 nm (UV7750 UV Detector)  
**Injection Vol.** : 10  $\mu$  L  
**Sample** : Standard

### Analyte:

1. Tamsulosin hydrochloride 25 mg/L
2. p-Hydroxybenzoic acid n-propyl ester 50 mg/L

Resolution (1, 2) : 13.4 ( $\geq$  12)

\*Dissolve 4.4 mL of Perchloric acid and 1.5 g of Sodium hydroxide in 950 mL of water.  
Adjust pH 2.0 by Sodium hydroxide solution(1 mol/L).  
Add water to make 1,000 mL.