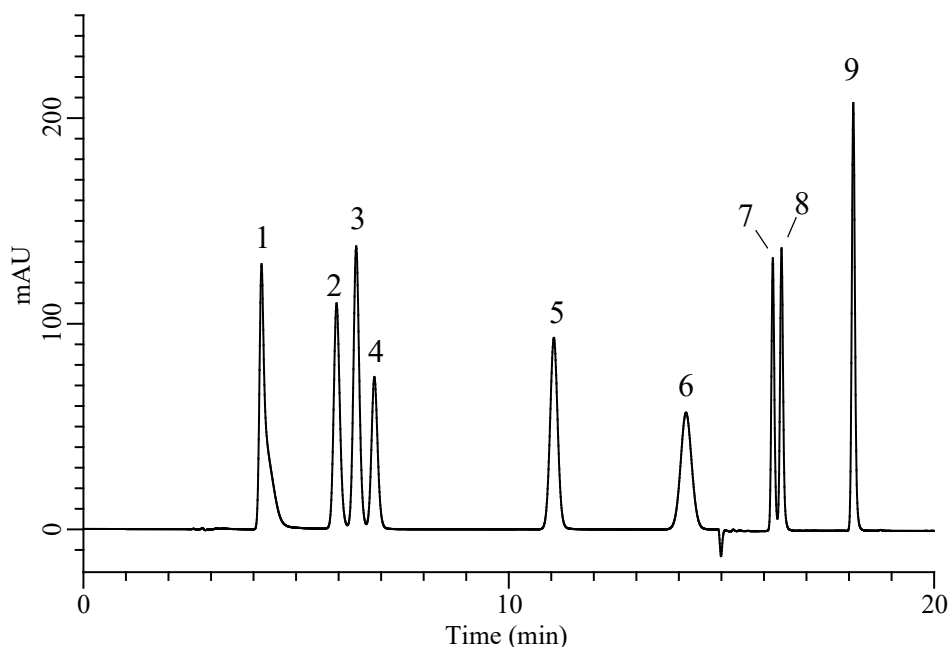


InertSearch for LC

Inertsil Applications

Analysis of ATP related compounds and Cyclic nucleotides (InertSustain AQ-C18)

Data No. LB819- 7111



Conditions

Column : InertSustain AQ-C18 (GL Sciences Inc.)
(5 μ m, 250 x 4.6 mm I.D.)
Column Cat. No. : 5020-89731
Eluent : A) CH₃CN
B) 25 mM CH₃COONa in H₂O (pH5.0, H₃PO₄)

Analyte:

1. 5'-ATP 100 mg/L
2. 5'-ADP 100 mg/L
3. GMP 100 mg/L
4. 5'-IMP 100 mg/L
5. Hypoxanthine 100 mg/L
6. 5'-AMP 50 mg/L
7. cGMP 50 mg/L
8. Inosine 50 mg/L
9. cAMP 50 mg/L

Time (min)	A (vol%)	B (vol%)
0.0	0	100
7.0	0	100
17.0	15	85
20.0	15	85

Flow Rate : 1.0 mL/min
Col. Temp. : 40 °C
Detection : UV 260 nm
Injection Vol. : 10 μ L
Sample : Standard